

ARLINGTON DOWNS THREE

BEING A RESUBDIVISION OF LOTS 3 AND 5 IN ARLINGTON DOWNS, BEING A PLANNED UNIT DEVELOPMENT OF PART OF THE NORTHWEST 1/4 OF SECTION 25 AND PART OF THE NORTHEAST 1/4 OF SECTION 26, TOWNSHIP 42 NORTH, RANGE 10, EAST OF THE THIRD PRINCIPAL MERIDIAN, ACCORDING TO THE PLAT OF SAID ARLINGTON DOWNS, RECORDED JANUARY 3, 2013 AS DOCUMENT 1300334039, IN COOK COUNTY, ILLINOIS.

NOTE:
THE PROPERTY IS SUBJECT TO DECLARATION OF EASEMENTS, COVENANTS AND RESTRICTIONS (ARLINGTON DOWNS) DATED MAY 23, 2013 MADE BY ARLINGTON DEVCO LLC RECORDED JUNE 12, 2013 AS DOCUMENT NUMBER 1316322014

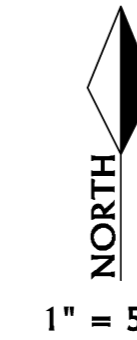
NOTE E1: INTENTIONALLY OMITTED.

NOTE E2: INTENTIONALLY OMITTED.

NOTE E3: PUBLIC UTILITY EASEMENT PER ARLINGTON PARK OFFICE CENTRE RECORDED MAY 23, 1980 AS DOCUMENT 25466742.

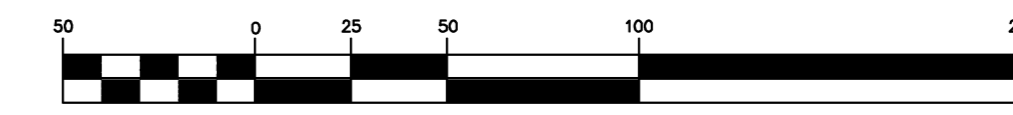
PUDE = PUBLIC UTILITY AND DRAINAGE EASEMENT
PUE = PUBLIC UTILITY EASEMENT

THIS SUBDIVISION CONTAINS LOTS 3A AND 5A. THE LOT NUMBERING IS AN INTEGRAL PART OF A LARGER DEVELOPMENT. LOT NUMBERING HAS BEEN PROVIDED BY THE CLIENT.



1" = 50'

GRAPHIC SCALE

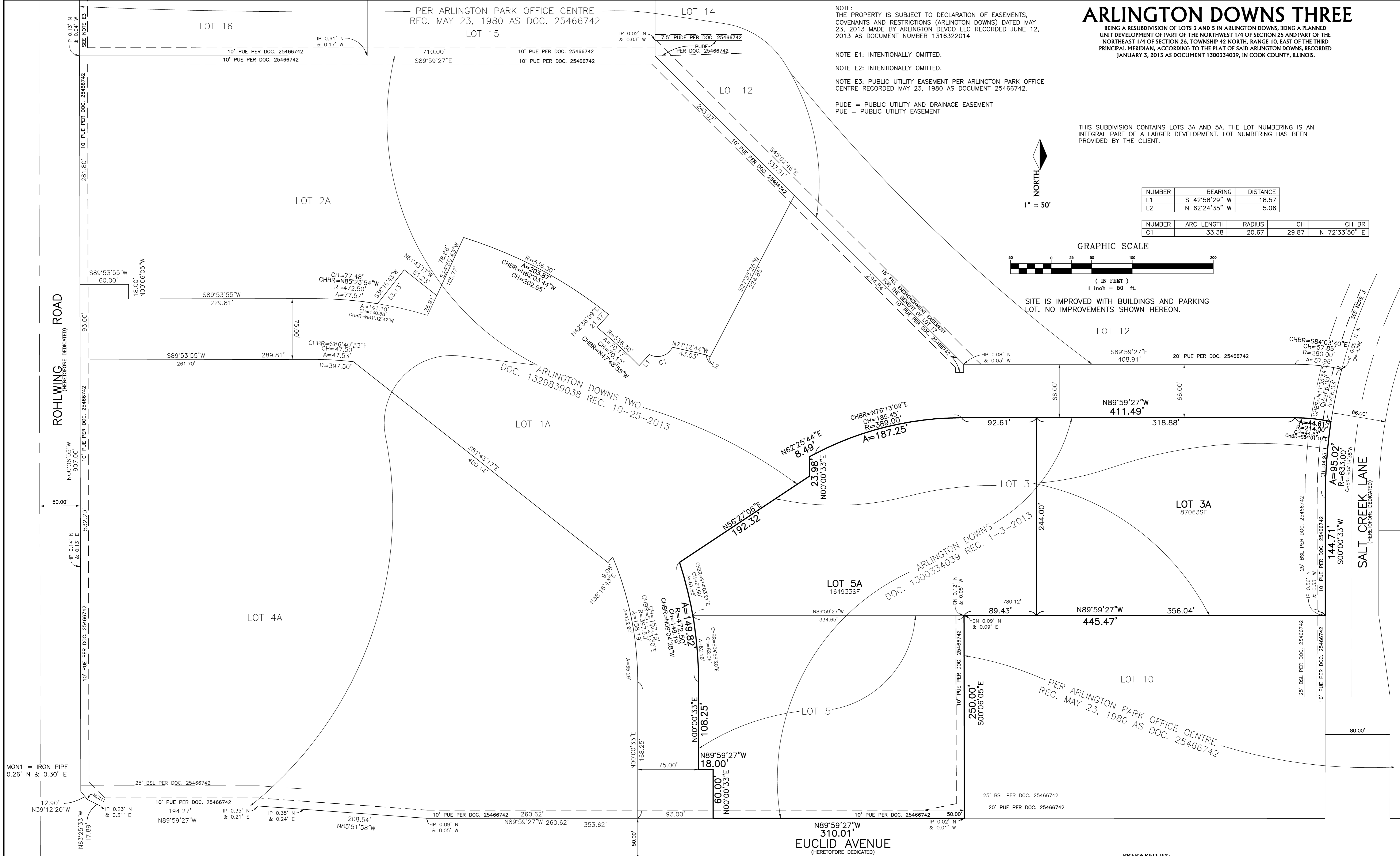


(IN FEET)
1 inch = 50 ft.

SITE IS IMPROVED WITH BUILDINGS AND PARKING LOT. NO IMPROVEMENTS SHOWN HEREON.

NUMBER	BEARING	DISTANCE
L1	S 42°58'29" W	18.57
L2	N 62°24'35" W	5.06

NUMBER	ARC LENGTH	RADIUS	CH	CH BR
C1	33.38	20.67	29.87	N 72°33'50" E



MON1 = IRON PIPE
0.26' N & 0.30' E

TOTAL AREA OF TRACT SURVEYED =
251,996 SQUARE FEET OR 5.7850 ACRES

SHEET 1 OF 2

REVISION: JUNE 21, 2018 (VILLAGE COMMENTS 6-15-18)
DATE: MAY 25, 2018
ORDER NO.: 180292
PROJ. NO.: 1300.1
FOR: TARTAN REALTY GROUP, INC.
PROJ. NAME: ARLINGTON DOWNS
Copyright © TFW Surveying & Mapping, Inc., 2018. All rights reserved.
Professional Design Firm Registration #184-002793.

DATE	CHECKED BY	REVISION
2/29/18	TFW	5/25/18 - ORIGINAL PUBLICATION

PREPARED BY:

TFW SURVEYING & MAPPING

LAND SURVEYING · TOPOGRAPHIC MAPPING · CONSTRUCTION LAYOUT
888 EAST BELVIDERE ROAD · SUITE 413 · GRAYSLAKE, ILLINOIS 60030
847-548-6600 FAX 548-6699
tfw@tfwsurvey.com www.tfwsurvey.com

