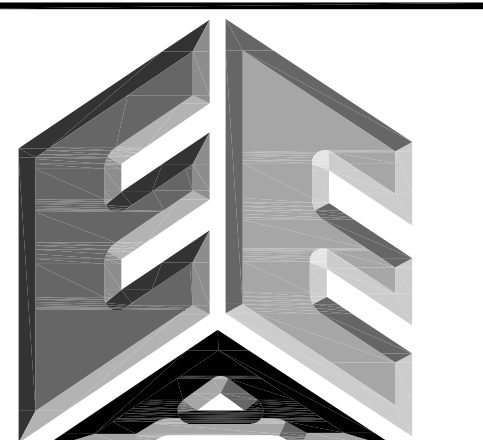
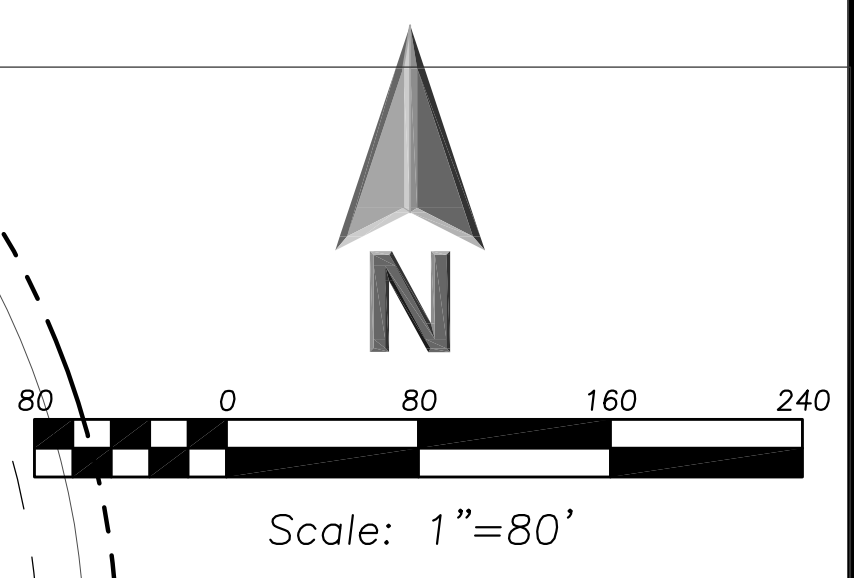
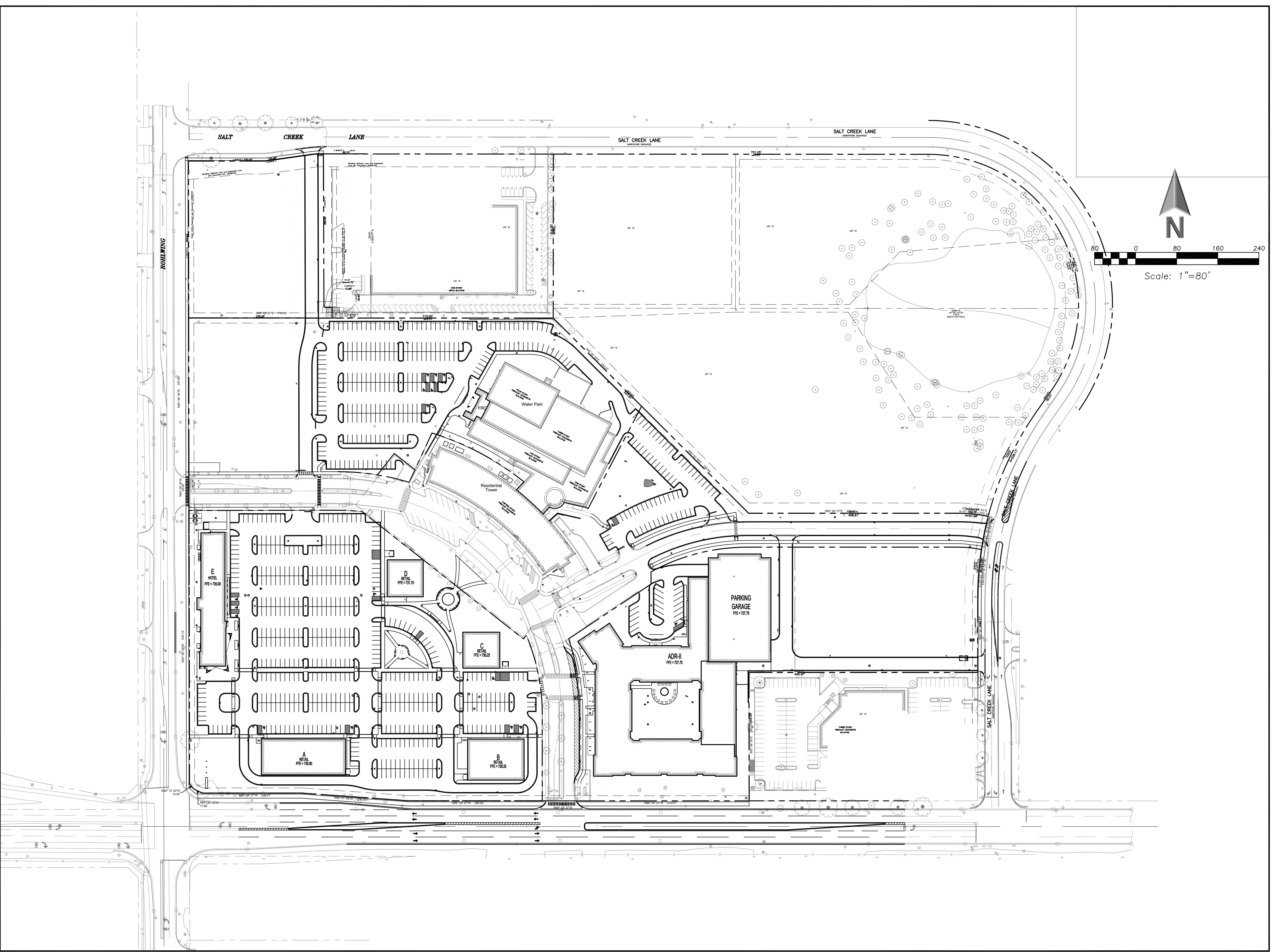


E:\Pat\Arlington Downs\06 West Site - OKW\Drawings\Arlington Downs Site Plan.dwg
 Plotted: 7/30/18 @ 3:50pm By: pdmmer



**ERIKSSON
ENGINEERING
ASSOCIATES, LTD.**

145 COMMERCE DRIVE, SUITE A
 GRAYSLAKE, ILLINOIS 60030
 PHONE (847) 223-4804
 FAX (847) 223-4864
 EMAIL INFO@EEA-LTD.COM
 PROFESSIONAL DESIGN FIRM
 LICENSE NO. 184-003220
 EXPIRES: 04/30/2019

**ARLINGTON DOWNS
 PHASE 2 CONSTRUCTION**
 3400 W Euclid Avenue
 Arlington Heights, Illinois

Reserved for Seal:

Expiration Date: 11/19

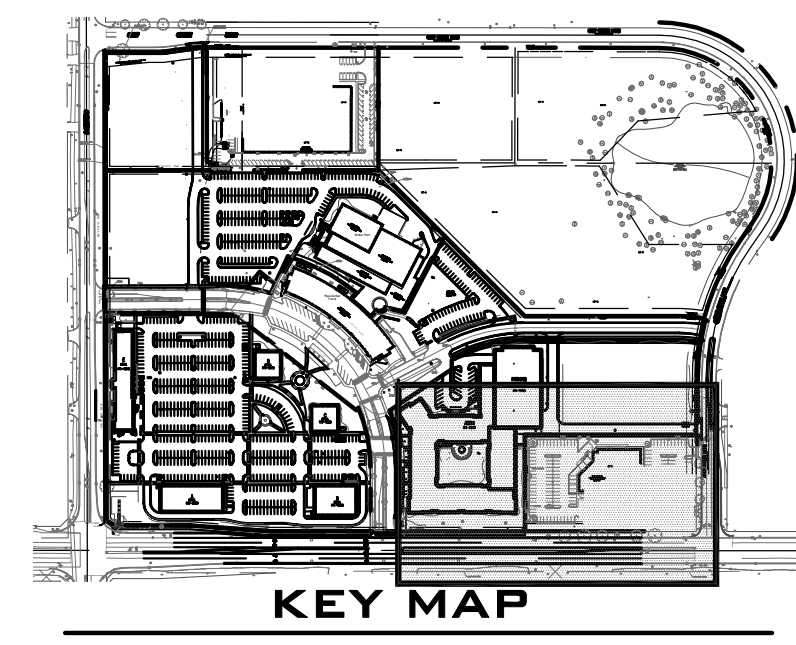
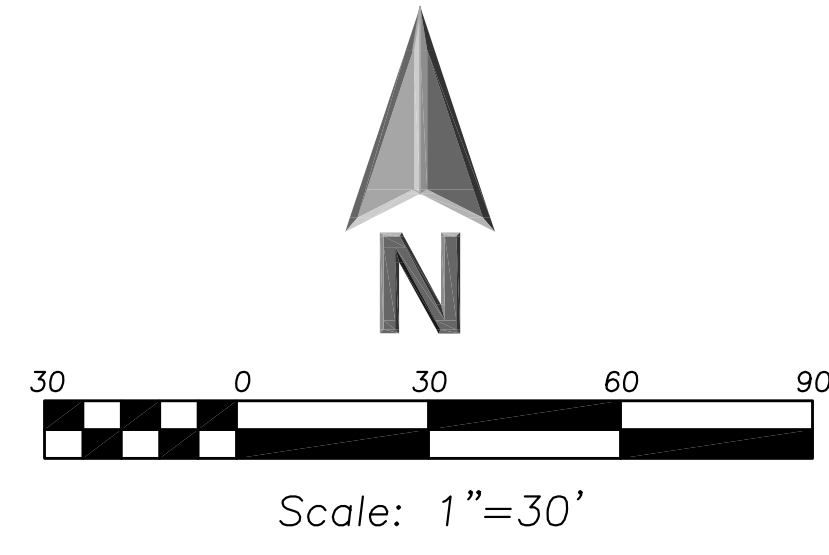
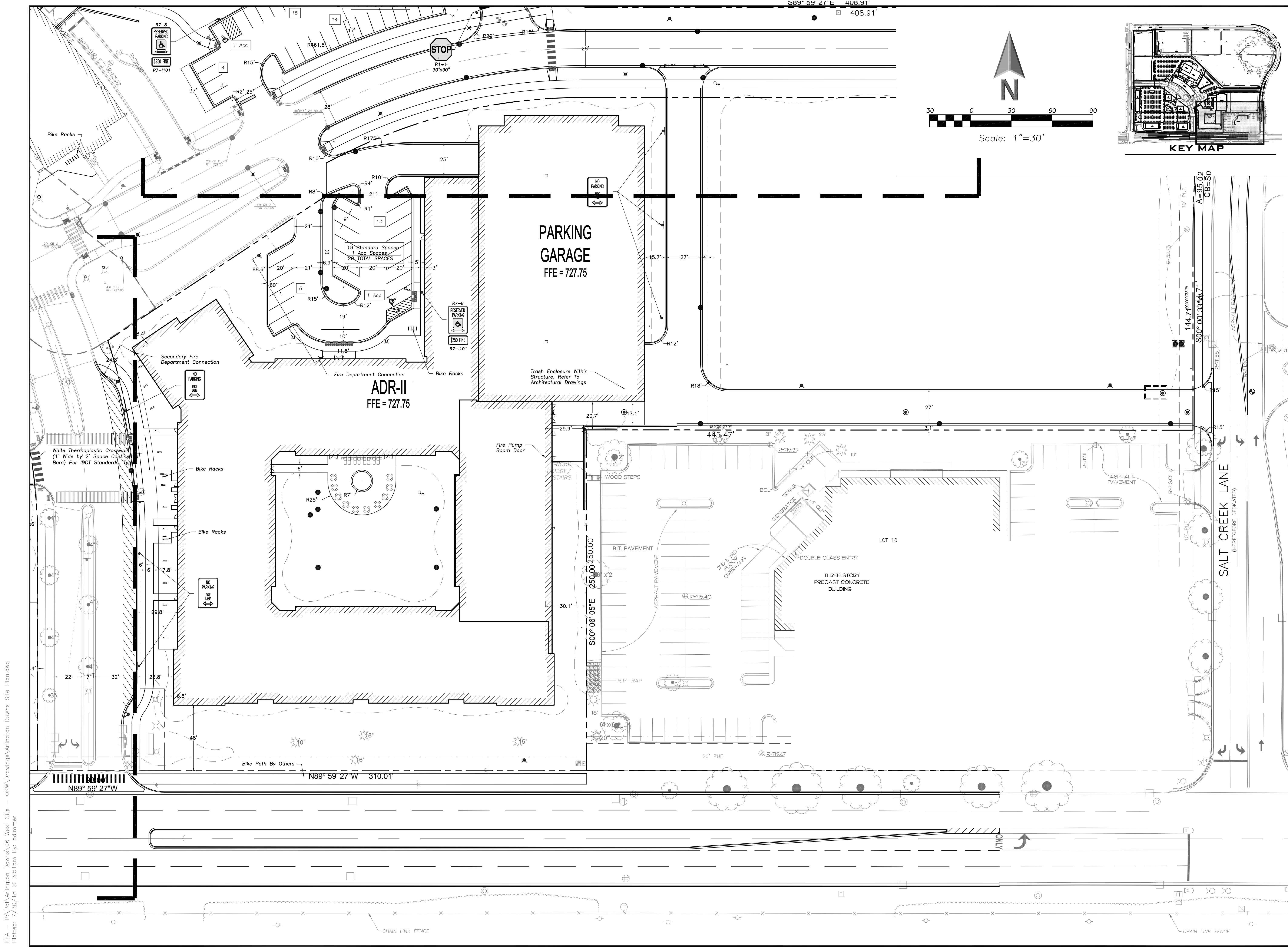
No.	Date	Description
	04/04/18	Issued For PUD Amendment
	05/08/18	Revised Per Village
	06/22/18	Revised Per Village
	07/03/18	Revised Per Fire Dept
	07/30/18	Final PUD Submittal

© ERIKSSON ENGINEERING ASSOCIATES, LTD., 2018
 THE PLAN & DESIGN ARE THE PROPERTY OF ERIKSSON ENGINEERING ASSOCIATES, LTD.
 NO REPRODUCTION OF ANY PART OF THESE PLANS IS PERMITTED WITHOUT THE WRITTEN
 CONSENT OF ERIKSSON ENGINEERING ASSOCIATES, LTD.

Design By:	PD	Date:	04/04/18
Approved By:		Project No.:	

Sheet Title:
**SITE GEOMETRY
 PLAN**
OVERALL

Sheet No:
C-2.00



**ERIKSSON
ENGINEERING
ASSOCIATES, LTD.**

145 COMMERCE DRIVE, SUITE A
GRAYBLAKE, ILLINOIS 60030
PHONE (847) 223-4804
FAX (847) 223-4864
EMAIL INFO@EEA-LTD.COM
PROFESSIONAL DESIGN FIRM
LICENSE NO. 184-003220
EXPIRES: 04/30/2019

**ARLINGTON DOWNS
PHASE 2 CONSTRUCTION**

3400 W Euclid Avenue
Arlington Heights, Illinois

Reserved for Seal:

Expiration Date: 11/19

No.	Date	Description
	04/04/18	Issued For PUD Amendment
	05/08/18	Revised Per Village
	06/22/18	Revised Per Village
	07/03/18	Revised Per Fire Dept
	07/30/18	Final PUD Submittal

© ERIKSSON ENGINEERING ASSOCIATES, LTD., 2018 THIS PLAN & DESIGN ARE THE PROPERTY OF ERIKSSON ENGINEERING ASSOCIATES, LTD. NO REPRODUCTION OR USE OF ANY PART OF THIS PLAN IS PERMITTED WITHOUT THE WRITTEN CONSENT OF ERIKSSON ENGINEERING ASSOCIATES, LTD.	
Design By: PD	Date: 04/04/18
Approved By:	Project No.:

Sheet Title:
**SITE GEOMETRY
PLAN
SOUTHEAST**

Sheet No:
C-2.05

EEA - P:\Pat\Arlington Downs\06 West Site - OKW\Drawings\Arlington Downs Site Plan.dwg
 Plotted: 7/30/18 @ 3:51pm By: pdmmer