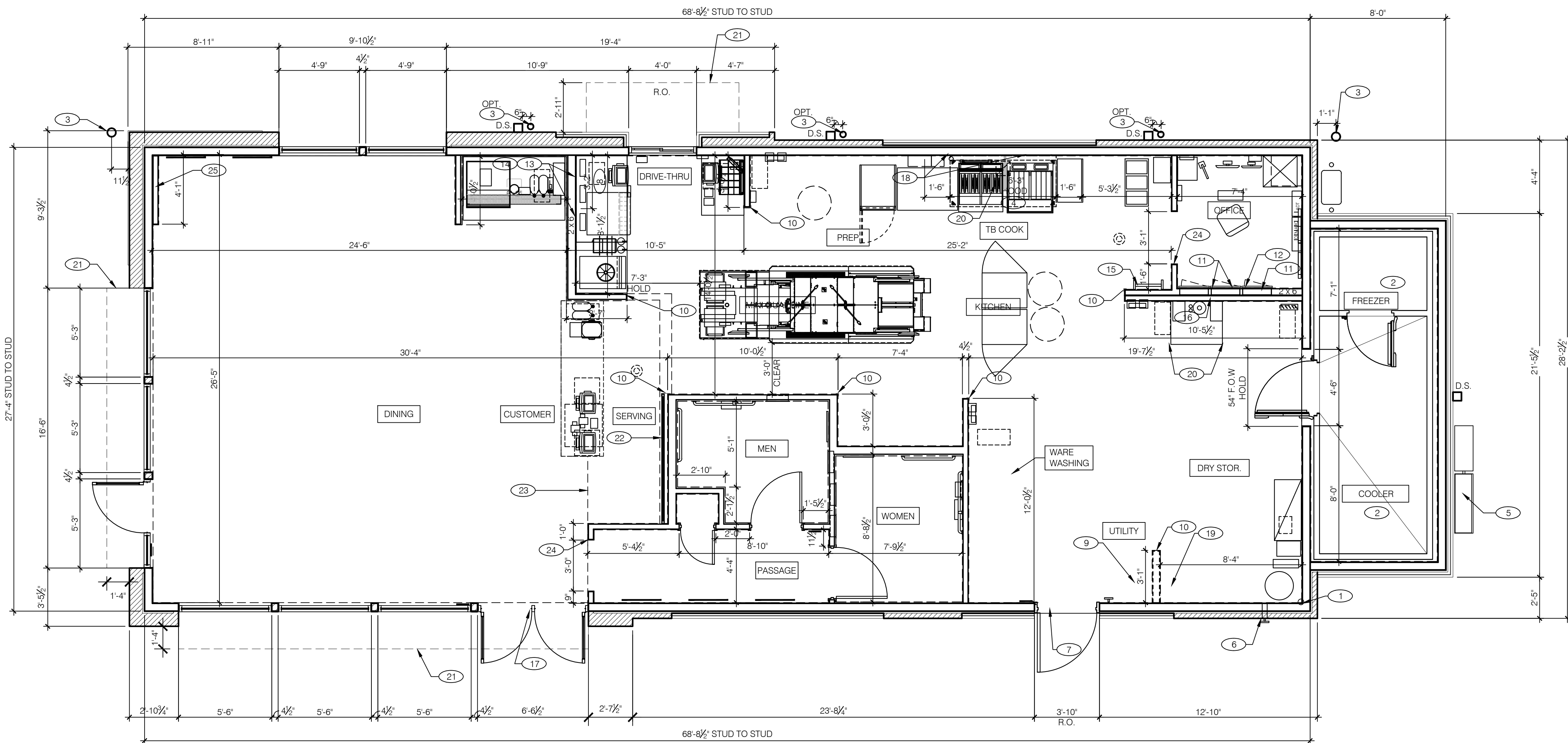
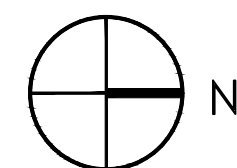


EXPLORER MEDIUM - 40



FLOOR PLAN 1/4"=1'-0" A

12 11 10 9 8 7 6 5 4 3 2 1



- △ 09-14-18 ROUND 1 REVISIONS

CONTRACT DATE: XX.XX.XXXX
BUILDING TYPE: EXP40
PLAN VERSION: SEPTEMBER, 2018
SITE NUMBER: XXX-XXX
STORE NUMBER: XX

TACO BELL

1530 W. ALGONQUIN RD.
ARLINGTON HEIGHTS, IL

NOT USED

E

FLOOR PLAN NOTES

D

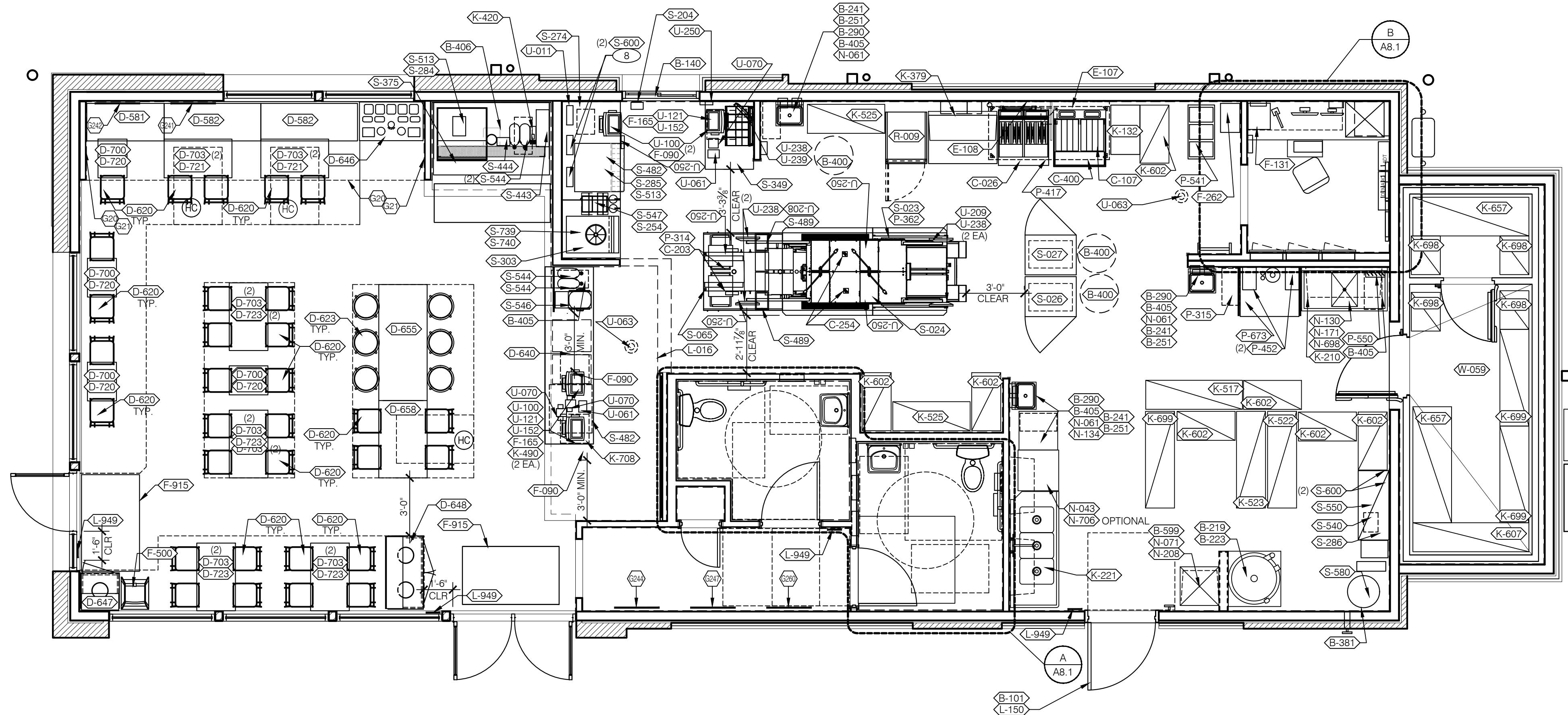
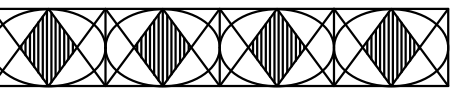
DIMENSIONS:
A. ALL DIMENSIONS ARE TO FACE OF STUD U.O.N. REFER TO FOUNDATION PLAN FOR FACE OF CONC. DIMENSIONS.
B. DIMENSIONS NOTED AS "CLEAR" OR "HOLD" ARE MIN. REQ'D. NET CLEARANCE FROM FACE OF WALL. "WANSCOT FINISH" VERIFY FINAL EQUIPMENT SIZES W/ VENDOR PRIOR TO INT. WALL FRAMING.
WINDOWS / DOORS:
A. SEE SHIT. A1.1 FOR WINDOW TYPES AND DOOR SCHEDULE.
B. ALL DOOR AND WINDOW OPENING DIMENSIONS ARE TO ROUGH OPENING.
FINISH SUBSTRATES:
A. PROVIDE 1/2" THICK CEMENTITIOUS BD. FROM FLOOR SLAB TO 12" A.F.F. MIN. IN LIEU OF GYP. BD. AT ALL WALLS EXCEPT SHEARWALL SURFACES. U.O.N.
B. ALL JOINTS, GAPS OR SPACES LEADING TO ALL HOLLOW OR INACCESSIBLE SPACES SHALL BE SEALED WITH NSF INTERNATIONAL APPROVED SEALANTS.
C. ALL BACK OF HOUSE AND OFFICE WALLS SHALL HAVE 1/2" CDX PLYWOOD SUBSTRATE, U.O.N.
DECOR:
A. SEE A2.0 FOR SEATING PLAN AND DETAILS.
B. SEE A7.0 FOR FLOOR FINISHES.
C. SEE A8.0 - A8.3 FOR WALL FINISHES.
D. SEE A7.1 FOR CEILING FINISHES.
GENERAL:
A. PROVIDE THREE FIRE EXTINGUISHERS - (2) 10 lb. BC and (1) 10 lb. ABC - TO COMPLY WITH LOCAL FIRE CODE. LOCATE PER DIRECTION OF FIRE MARSHALL OR LOCAL AUTHORIZING AGENT.
B. DRAWINGS ARE BASED UPON WOOD FRAMING. UTILIZATION OF METAL STUDS ON NON-BEARING INTERIOR PARTITIONS, BULKHEADS AND SOFFITS IS ACCEPTABLE.
C. ALL ATTACHMENTS MADE THROUGH E.I.F.S. SHALL BE BUSHED TO PREVENT DAMAGE TO THE FINISH, PER 9/A6.2.
D. ALL PENETRATIONS THROUGH E.I.F.S. SHALL BE SEALED USING MFRS. APPROVED METHOD.

- ① STARTING POINT. ALL SUB-TRADES SHALL USE THIS POINT AS A BEGINNING LAY-OUT (INSIDE FACE OF EXT. WALL STUDS).
- ② NO FRP BEHIND (W.059) WALK-IN COOLER/FREEZER.
- ③ PIPE BOLLARD. SEE DETAIL 9/C1.0.
- ④ HOOD WALL, SEE WALL LEGEND.
- ⑤ ELECTRICAL MAIN SWITCH BOARD. REFER TO ELECT. DWGS.
- ⑥ CO2 FILL BOX LOCATION.
- ⑦ TILE TO METAL THRESHOLD.
- ⑧ KEEP CLEAR FOR UTILITIES & SYRUP LINES. SEE DETAIL 14 & 19/A6.4 FOR STUD LAYOUT REQUIREMENTS.
- ⑨ MOP SINK. REFER TO SHEET A2.0 & A2.1.
- ⑩ S.S. CORNER GUARD / WALL CAP [TM-2], TYP. ALL CORNERS IN BACK-OF-HOUSE FROM REAR WALL TO THE KITCHEN SIDE OF THE SERVICE COUNTER. SEE DETAIL 19/A6.3.
- ⑪ ELECT. PANELS RECESSED IN 2x6 WALL.
- ⑫ LIGHTING CONTROL PANEL RECESSED. REFER TO ELECT. DWGS.
- ⑬ SYRUP LINE CHASE (ABOVE). SEE DETAIL 19/A6.4.
- ⑭ 14"x14" HORIZONTAL OPENING FOR SYRUP TUBES. COORDINATE WALL PENETRATION WITH COUNTER INSTALLER. SEAL CHASE TO COUNTER. SEE 11/A6.4.
- ⑮ ROOF LADDER SEE 4/A6.0
- ⑯ ADD SECOND 2X4 WALL ON KITCHEN SIDE.
- ⑰ REMOVABLE ASTRAGAL FROM INSIDE ONLY.
- ⑱ METAL STUDS REQUIRED PER LOCAL CODES.
- ⑲ INDICATES WATER HEATER LOCATION.
- ⑳ SPLASH GUARD. SEE DETAIL 9/A6.3.
- ㉑ LINE OF CANOPY ABOVE.
- ㉒ LIGHTED WALL. REFER TO DETAIL 5/A8.0
- ㉓ OUTLINE OF SEATING AREA (AREA = 648 SF).
- ㉔ CASED OPENING, REFER TO DETAIL 7/A6.4.
- ㉕ FUR OUT WALL AS INDICATED WITH 2X4 WOOD STUDS AT 16" O.C.

KEY NOTES

B

FLOOR PLAN
A1.0



| | |
|---|--|
| △ | |
| △ | |
| △ | |
| △ | |
| △ | |
| △ | |
| △ | |
| △ | |
| △ | |
| △ | |
| △ | |
| △ | |

△ 10-02-18 ROUND 2 REVISIONS
△ 09-14-18 ROUND 1 REVISIONS

CONTRACT DATE: XX.XX.XXXX
BUILDING TYPE: EXP40
PLAN VERSION: SEPTEMBER, 2018
SITE NUMBER: XXX-XXX
STORE NUMBER: XX

TACO BELL
1530 W. ALGONQUIN RD.
ARLINGTON HEIGHTS, IL

EQUIPMENT/SEATING PLAN 1/4"=1'-0" **A**

| SYM. | QTY. | ITEM | SYM. | QTY. | ITEM |
|-------|------|--|--|-------|-----------------------------------|
| D-581 | 1 | PINE PLANK SETTEE BOOTHS - 48" | D-721 | 2 | 24" X 42" ADA TABLE TOP - PLYWOOD |
| D-582 | 2 | PINE PLANK SETTEE BOOTHS - 60" | D-723 | 4 | 24" X 42" TABLE TOP - PLYWOOD |
| D-620 | 31 | RETRO CHAIR - 18" | D-730 | TBD * | WINDOW SILL |
| D-623 | 6 | BARREL BARSTOOL - 29" | D-753 | TBD * | WAINSCOTING |
| D-640 | 1 | SERVICE COUNTER & POS STATION | D-755 | TBD * | CHAIRRAIL |
| D-646 | 1 | CONDIMENT COUNTER - RECTANGLE | * CONSULTANT TO PROVIDE LINEAR FOOTAGE FOR SILLS, CHAIR RAILS AND SHROUDS. | | |
| D-647 | 1 | WASTE ENCLOSURE - SINGLE | | | |
| D-648 | 1 | WASTE ENCLOSURE - DOUBLE | | | |
| D-655 | 1 | WB HUB TABLE - 72" | | | |
| D-658 | 1 | WB HUB TABLE ADA - 48" | | | |
| D-700 | 4 | 22" X 22" X 28.5"H FREE STANDING TABLE BASE | | | |
| D-703 | 12 | 22" X 5.5" X 28.5"H FREE STANDING TABLE BASE | | | |
| D-720 | 4 | 24" X 19" TABLE TOP - PLYWOOD | | | |

SEATING PACKAGE - BY SEATING VENDOR U.O.N. (TOTAL SEATS = 43 INT) **E**

| SYM. | QTY. | ITEM | REMARKS |
|-------|------|---|--------------------------------|
| A-101 | 1 | SAUCE PACKET COMPILATION - ALCOVE ARTWORK | SEE A7.1 AND A8.0 FOR LOCATION |
| A-102 | 2 | 9'-5" X 4'-2" | |
| A-103 | 1 | 17'-5" X 4'-2" | |
| A-104 | 1 | HOT SAUCE POP ART | OPT. ALCOVE ARTWORK |
| A-105 | 1 | SAUCE CUP BELL PATTERN, 28"X40" | SEE A8.0 FOR LOCATION |
| A-106 | 1 | LINEAR PACKETS, 28"X40" | SEE A8.0 FOR LOCATION |
| A-107 | 1 | CONCRETE GRAFFITI, 28"X40" | SEE A8.0 FOR LOCATION |
| A-108 | 1 | MASH UP, 28"X40" | SEE A8.0 FOR LOCATION |
| A-109 | 1 | MASH UP, 28"X40" | SEE A8.0 FOR LOCATION |

ARTWORK SCHEDULE **D**

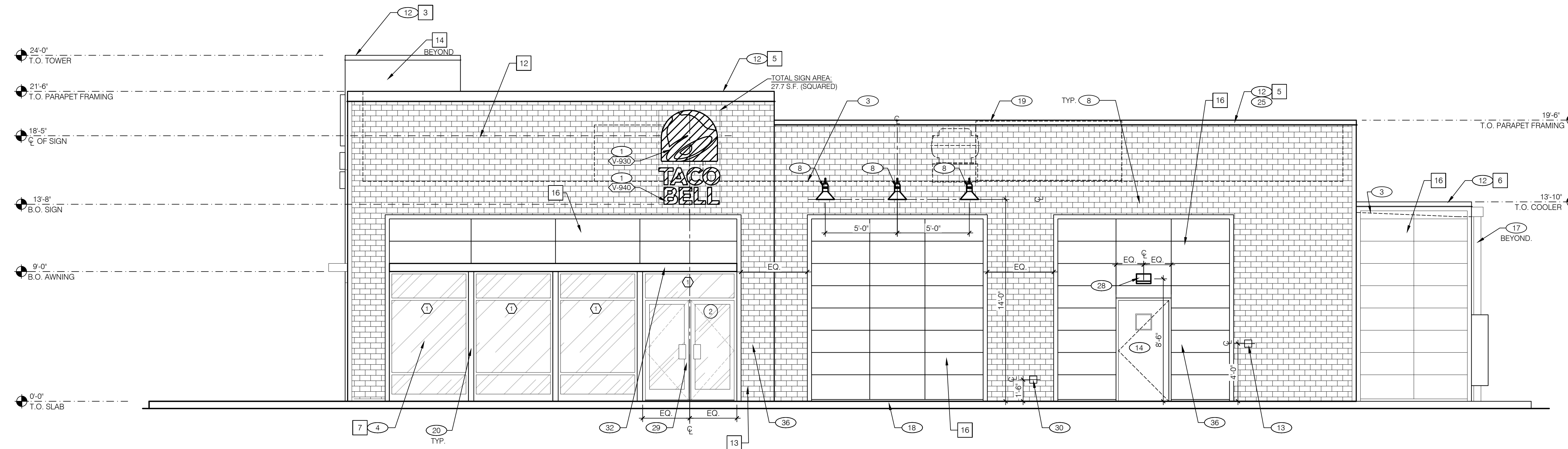
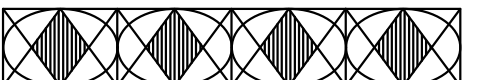
DECOR
1. REFER TO SC SHEETS FOR SCOPE OF WORK RESPONSIBILITIES.
2. (H) - SYMBOL DENOTES A HIGH TABLE OR DINING COUNTER WITH STOOLS.
3. (HC) - SYMBOL DENOTES A HANDICAP ACCESSIBLE TABLE.

| GENERAL NOTES | | C1 |
|----------------|------------|----|
| STORAGE TYPE | LINEAR FT. | |
| DRY STORAGE | 53 | |
| COLD STORAGE | 25 | |
| FROZEN STORAGE | 10 | |

SHELVING QUANTITIES REQUIRED **C2**

- 1 HOOD FIRE SUPPRESSION SYSTEM (ANSUL R-102 OR EQUAL).
- 2 SEE SHEET A1.1 FOR SECURITY DOOR PACKAGE.
- 3 MAINTAIN 36" MIN CLEAR AISLE EGRESS PATHS TO EXIT DOORS.
- 4 30" X 48" CLEAR FLOOR SPACE FOR HANDICAP ACCESS.
- 5 ALERT LIGHT BOX FOR 3-COMP POWER SOAK.
- 6 PULL STATION @ 3'-8" A.F.F.
- 7 GAS LINE DOWN TO EQUIPMENT.
- 8 COORDINATE LOCATION OF HORIZ PVC SYRUP CHASE THRU WALL TO COUNTER.
- 9 NOT USED.
- 10 SWITCHGEAR / ELECTRIC PANELS.
- 11 ROOF LADDER, SEE DETAILS 4 & 7/A6.0.
- 12 8' LADDER.
- 13 SAFE.
- 14 SPLASH GUARD. SEE 9 / A6.3.

KEYNOTES **B**



RIGHT SIDE ELEVATION 1/4"=1'-0" **A**

MISCELLANEOUS
A. SEE SHT A1.1 'WINDOW TYPES' FOR WINDOW ELEVATIONS.

SEALERS (REFER TO SPECS):
A. SEALANT AT ALL WALL AND ROOF PENETRATIONS.
B. SEALANT AT ALL WINDOW AND DOOR FRAMES AT HEAD AND JAMB. DO NOT SEAL SILL @ WINDOWS.
C. APPLY NEOPRENE GASKET (CONT.) BETWEEN BUILDING & CANOPY.

'CRITICAL' DIMENSIONS:
A. REQUIRED CLEAR OPENING WIDTH TO ENSURE COORDINATION WITH STANDARD SIGNAGE/ BUILDING ELEMENTS DIMENSIONS.

NOTE: NO EXTERIOR SIGNS ARE WITHIN THE SCOPE OF WORK COVERED BY THE BUILDING PERMIT APPLICATION. THE GENERAL CONTRACTOR SHALL BE RESPONSIBLE FOR COORDINATING THE INSTALLATION OF ALL EXTERIOR SIGNS AND INSTALLATION OF REQUIRED BLOCKING AND ELECTRICAL CONNECTIONS FOR FINAL APPROVED SIGNS.

NOT USED N.T.S. **B**

NOTE: SIGNAGE UNDER SEPARATE PERMIT

| QTY | ITEM DESCRIPTION | ELEC |
|-----|---------------------------------------|------|
| 3 | TB 3'-6" x 4'-0" LOGO BELL - FACE LIT | X |
| 3 | TB 14" CHANNEL LETTER WHITE | X |
| 1 | 9'-0" TALL MONUMENT SIGN | X |

NOT USED N.T.S. **I**

NOT USED N.T.S. **G**

GENERAL NOTES **F**

NOT USED N.T.S. **E**

SIGN SCHEDULE N.T.S. **C**

| SYMBOL | DESCRIPTION |
|--------|---|
| 1 | BUILDING SIGN, BY VENDOR. SEE STRUCTURAL BLOCKING ELEVATIONS, SHEET S5.0 FOR MORE INFORMATION. SEE ELECTRICAL PLANS FOR POWER REQUIREMENTS. |
| 2 | DRIVE THRU WINDOW. SEE SHEET A1.0 AND A1.1. |
| 3 | DASHED LINE INDICATES ROOF BEYOND. |
| 4 | STOREFRONT, TYPICAL. |
| 5 | TUBE STEEL POST. SEE STRUCTURAL DWGS. |
| 6 | SWITCH GEAR. PAINT TO MATCH WALL. |
| 7 | NOT USED. |
| 8 | GOOSENECK LAMP. |
| 9 | ASSUME D/T LANE SURFACE IS 6" BELOW THE FINISH FLOOR. REFER TO GRADING & SITE PLAN. |
| 10 | NOT USED. |
| 11 | TOWER WITH METAL PANEL FINISH. |
| 12 | PARAPET COPING. IF DURO-LAST EDGE TRIM IS USED. USE THE DURO-LAST PRE-FINISHED EDGE TRIM. SEE DETAIL 2/A6.0. |
| 13 | CO2 FILLER VALVE & COVER. SEE DETAIL 5/A6.2 SIM. |
| 14 | PAINT DOOR TO MATCH FIBER CEMENT PANELS. |
| 15 | GAS SERVICE. |
| 16 | WALL SHALL BE FINISHED PRIOR TO INSTALLATION OF SWITCHGEAR. |
| 17 | SCUPPER, COLLECTOR, AND VERTICAL DOWNSPOUT 6" MIN. PAINT TO MATCH ADJACENT WALL. |
| 18 | CONCRETE CURB. |
| 19 | RTU BEYOND. PAINT TO MATCH MAIN BUILDING COLOR. |
| 20 | FIBER CEMENT COVER OVER WOOD STUDS. SEE 3/A6.1 |
| 21 | OVERFLOW SCUPPER |
| 22 | WOOD RAFTERS. SEE STRUCTURAL DWGS. |
| 23 | BOLLARD |
| 24 | DUROLAST SINGLE MEMBRANE ROOFING OR EQUAL. |
| 25 | IF THE DURO LAST PARAPET CAP TRIM IS USED IT SHALL NOT BE PAINTED. |
| 26 | WOOD HEADER BEAM. SEE STRUCTURAL DWGS. |
| 27 | NOT USED. |
| 28 | WALL PACK LIGHT FIXTURE. |
| 29 | STOREFRONT DOOR. REFER TO DOOR SCHEDULE. |
| 30 | HOSE BIBB LOCATION. REFER TO PLUMBING AND DETAIL 8/A6.2 |
| 31 | GUTTER AND DOWNSPOUT. PAINT TO MATCH COLUMN |
| 32 | ANODIZED COPPER AWNING - BY OTHERS |
| 33 | 4" Ø BOLLARDS AT ALL DOWNSPOUTS. |
| 34 | NOT USED. |
| 35 | 3 1/2" FIBER CEMENT BOARD TRIM - PAINT TO MATCH ADJACENT FIBER CEMENT BOARD PANEL |
| 36 | KNOX BOX. |

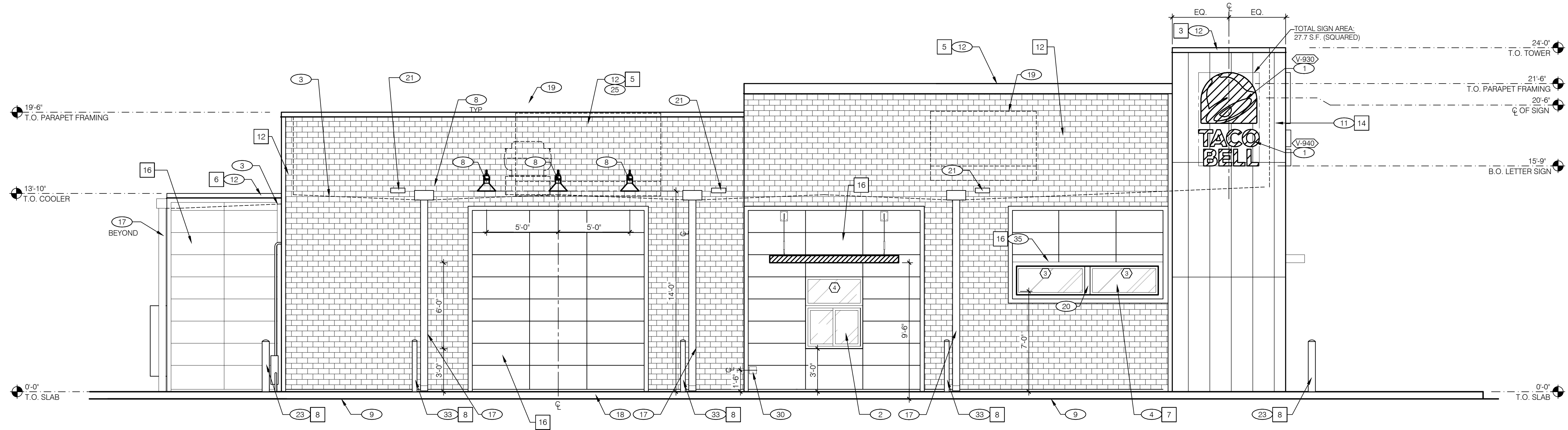
EXTERIOR FINISH SCHEDULE **H**

| SYMBOL | AREA | MANUFACTURER | COLOR | ALTERNATE MFR. | ALTERNATE COLOR | CONTACT INFORMATION |
|--------|------------------------------|------------------------------|--|----------------|-----------------|---|
| | | | | | | SHERWIN WILLIAMS; BRAD HARRINGTON, 216-228-54988 (PHONE), BRAD.E.HARRINGTON@SHERWIN.COM (EMAIL) |
| 3 | PARAPET CAP (TOWER) | SHERWIN WILLIAMS | SW 7069 'IRON ORE' | | | |
| 4 | PARAPET CAP (FRONT) | SHERWIN WILLIAMS | SW 7069 'IRON ORE' | | | |
| 5 | PARAPET CAP (SIDES) | SHERWIN WILLIAMS | SW 7069 'IRON ORE' | | | |
| 6 | PARAPET CAP (COOLER) | SHERWIN WILLIAMS | SW 7069 'IRON ORE' | | | |
| 7 | STOREFRONT WINDOWS | TBD | CLEAR ANODIZED | | | |
| 8 | PIPE BOLLARDS | STREET SMART | YELLOW - 1/4" THICK PLASTIC COVER (US.POSTMAN.COM) OR EQUAL | | | |
| 9 | PARAPET BACK ROOFING | DUROLAST | THE COLOR SHALL BE FACTORY COLORED 'TAN.' EQUAL ALTERNATE ALLOWED. | | | DURO-LAST; LEE COBB, 800-434-3876 (PHONE) |
| 12 | BRICK | INTERSTATE BRICK COMPANY | ARCTIC WHITE | | | |
| 14 | METAL PANELS | WESTERN STATES METAL ROOFING | 18" A606-4 RUSTWALL PANELS | | | WESTERN METAL DECK; RUSTY FAILS - RUSTY@METALDECK.COM - WWW.METALDECK.COM |
| 16 | EXTERIOR FIBER CEMENT PANELS | JAMES HARDIE | PAINT SW7048 URBANE BRONZE | | | |

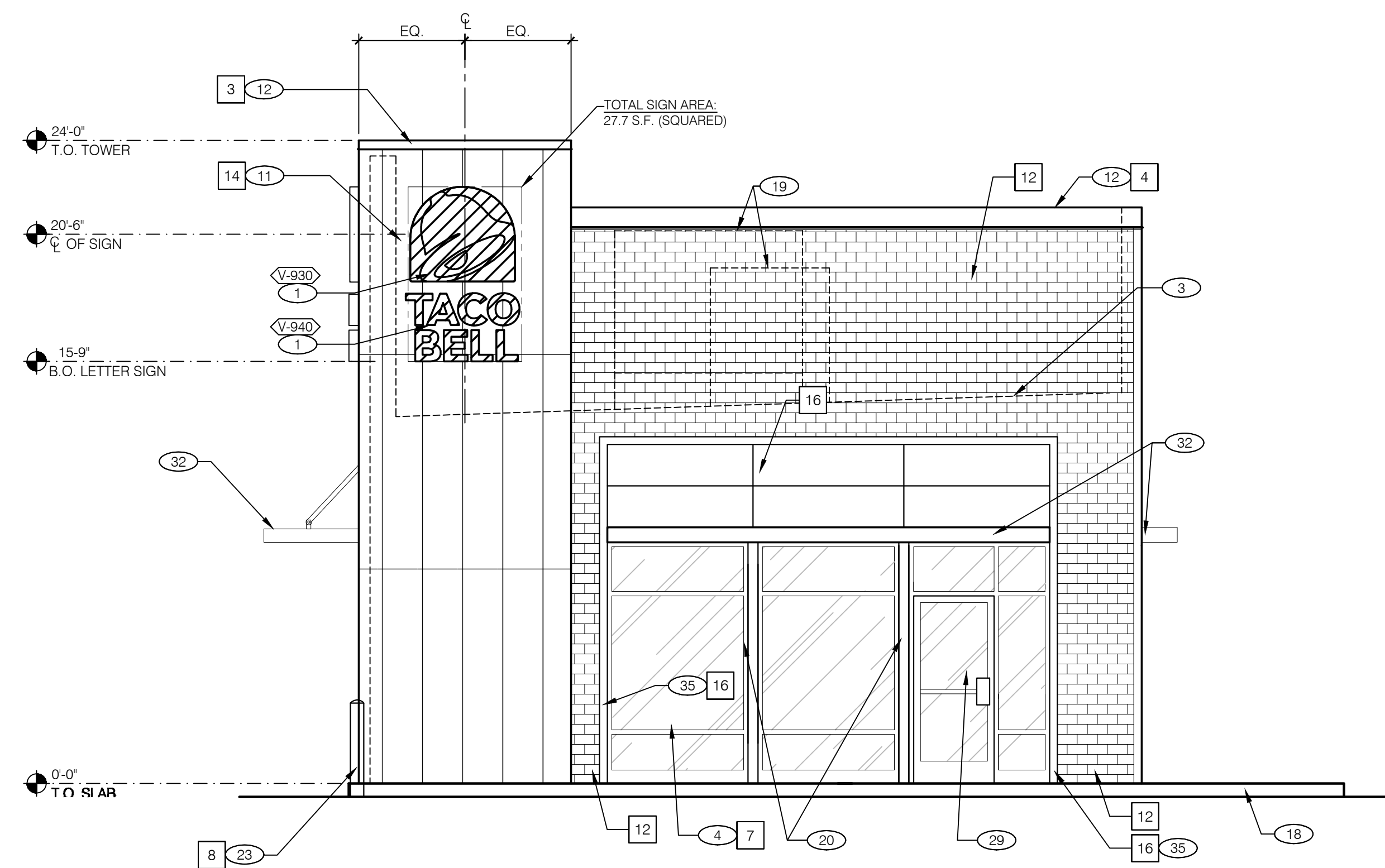
TACO BELL
1530 W. ALGONQUIN RD.
ARLINGTON HEIGHTS, IL

EXTERIOR ELEVATIONS
A4.0

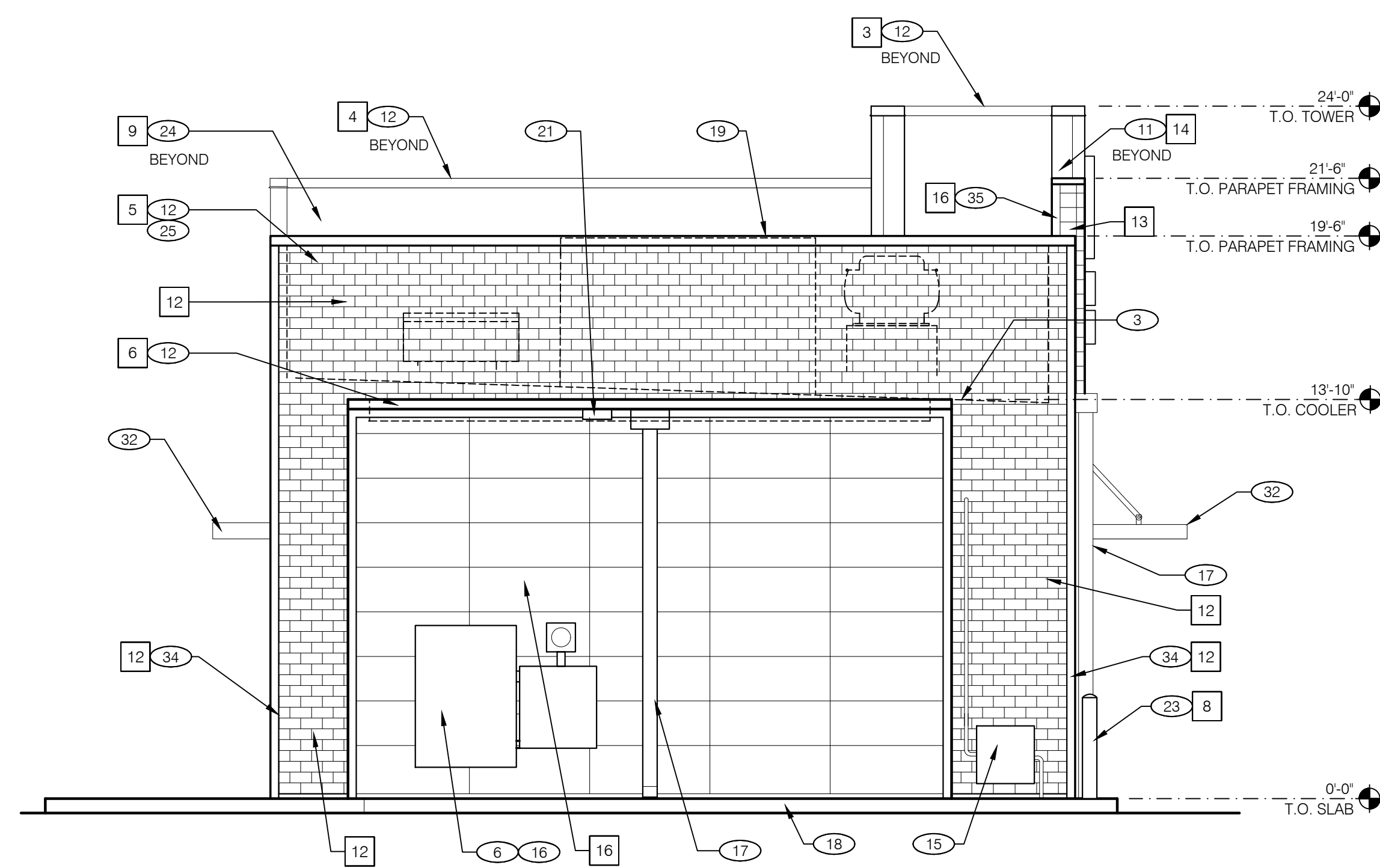
KEY NOTES **D**



LEFT SIDE ELEVATION 1/4" = 1'-0" A



FRONT ELEVATION 1/4" = 1'-0" C



REAR ELEVATION 1/4" = 1'-0" B



| | |
|---|--|
| △ | |
| △ | |
| △ | |
| △ | |
| △ | |
| △ | |
| △ | |
| △ | |
| △ | |
| △ | |
| △ | |

10-02-18 ROUND 2 REVISIONS

09-14-18 ROUND 1 REVISIONS

CONTRACT DATE: XX.XX.XXXX
BUILDING TYPE: EXP40
PLAN VERSION: SEPTEMBER, 2018
SITE NUMBER: XXX-XXX
STORE NUMBER: XX

TACO BELL

1530 W. ALGONQUIN RD.
ARLINGTON HEIGHTS, ILL.

EXTERIOR ELEVATIONS

A4.1



- △
- △
- △
- △
- △
- △
- △
- △
- △
- △

CONTRACT DATE: XXXX.XXXX
BUILDING TYPE: EXP40
PLAN VERSION: MAY, 2018
SITE NUMBER: XXX-XXX
STORE NUMBER: XX

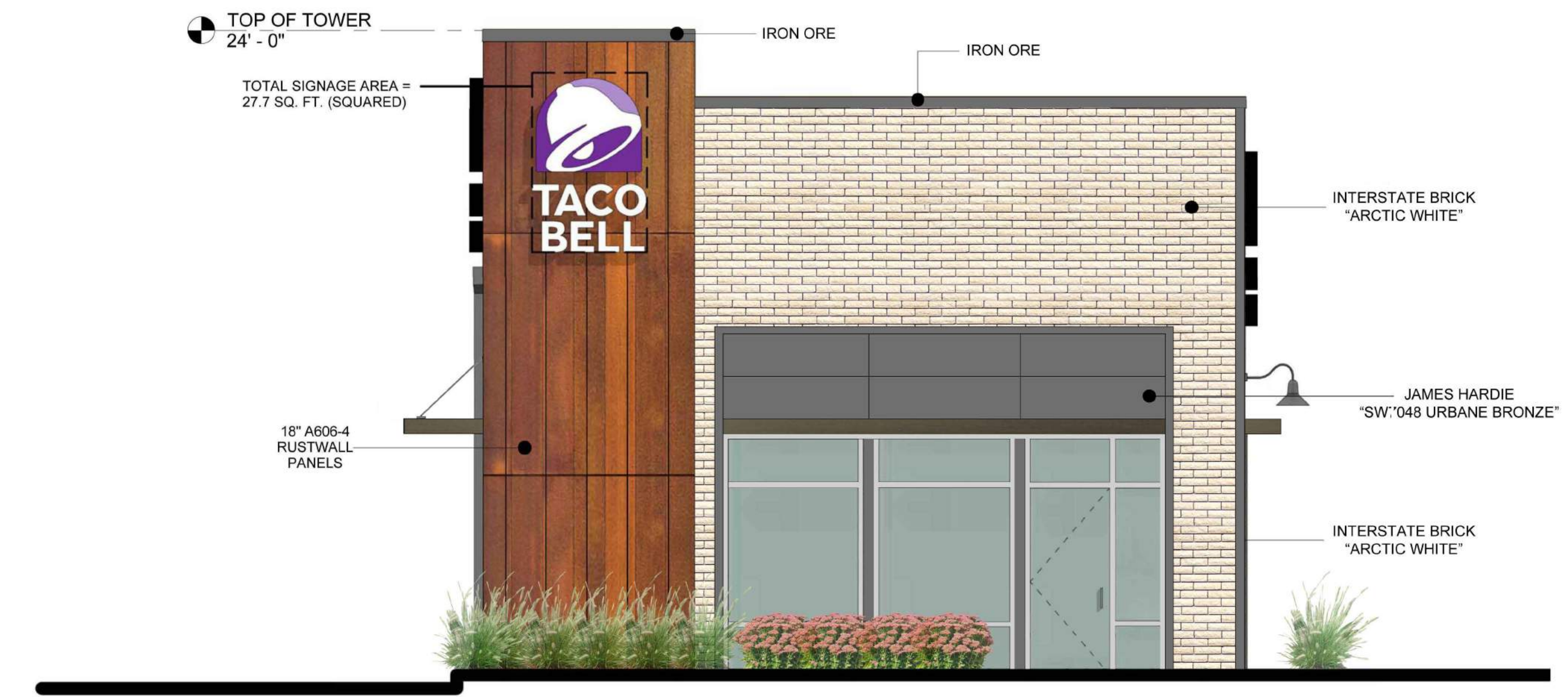
TACO BELL
1530 W. ALGONQUIN RD.
ARLINGTON HEIGHTS, IL

**RENDERED
EXTERIOR
ELEVATIONS**

A4.2



3 1/4" = 1'-0"



4 1/4" = 1'-0"



2 1/4" = 1'-0"



1 1/4" = 1'-0"