

LOCATION MAP  
N.T.S.



SITE ACROSS STREET NW OF INTERSECTION



SITE ACROSS STREET (DUNDEE RD.)



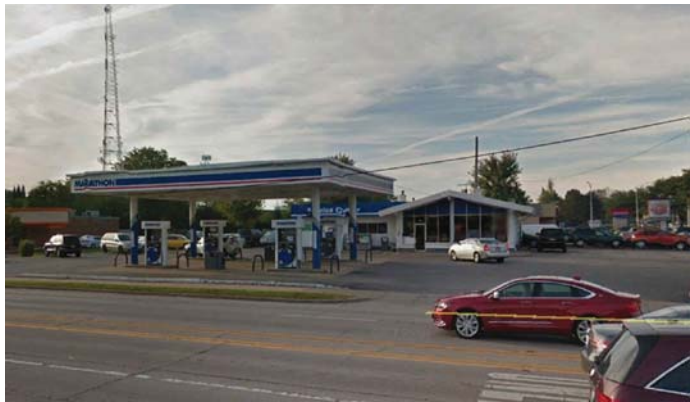
1 SITE TO THE EAST



2 SITES TO THE EAST



3 SITES TO THE EAST



1 SITE TO THE WEST



2 SITES TO THE WEST



3 SITES TO THE WEST

dunkin'  
brands™

MRV

ARCHITECTS, INC.



5105 TOLLVIEW DR., SUITE 197  
ROLLING MEADOWS, IL 60008

ALL DRAWINGS, SPECIFICATIONS AND PLANS ARE INSTRUMENTS OF SERVICE. THEREFORE ARE PROPERTY OF MRV ARCHITECTS, INC. THEY MAY NOT BE REUSED, COPIED OR REPRODUCED WITHOUT PERMISSION AND EXPRESS WRITTEN CONSENT OF MRV ARCHITECTS

REVISION	DESCRIPTION	ISSUE DATES	DRAWN	CHECKED	DATE	PROJECT NO	PROJECT	JT	MV	10-10-18	18037
1											
2											
3											
4											
5											
6											
7											
8											
9											
10											

SITE LOCATION

DUNKIN' DONUTS  
105 W. DUNDEE RD.  
ARLINGTON HEIGHTS, IL

PC# 310168

SHEET

A-1

1 OF 7



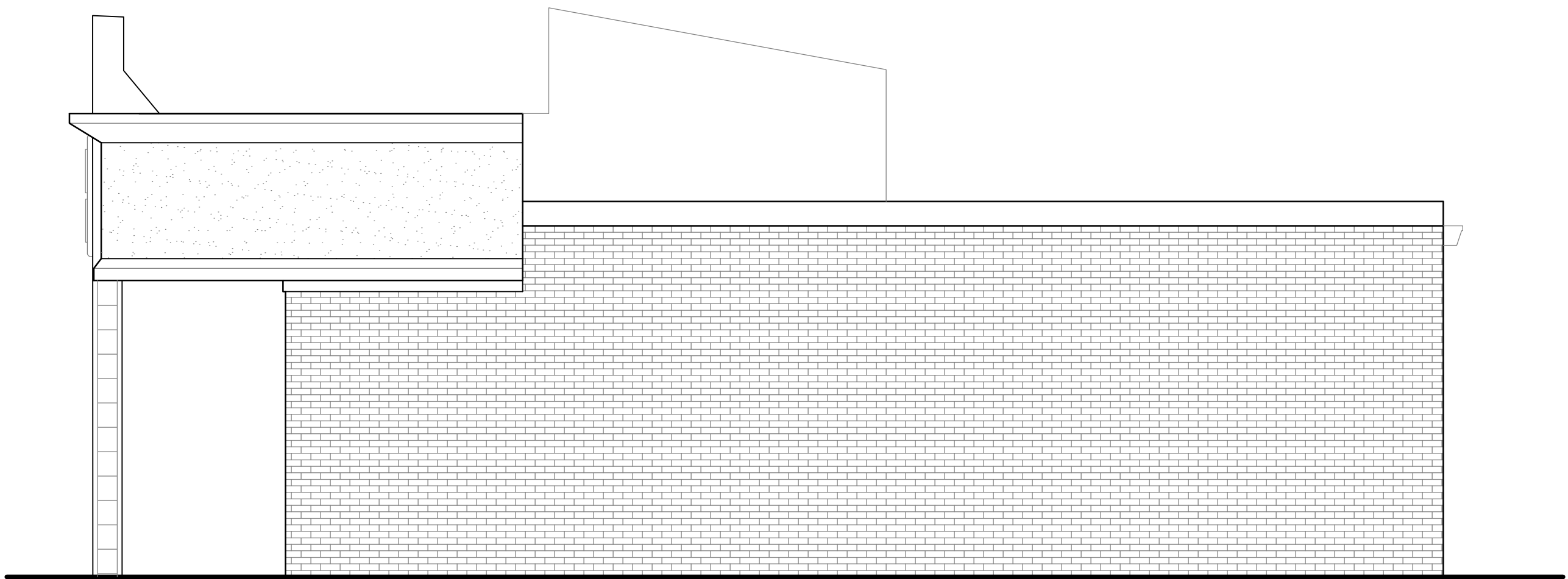




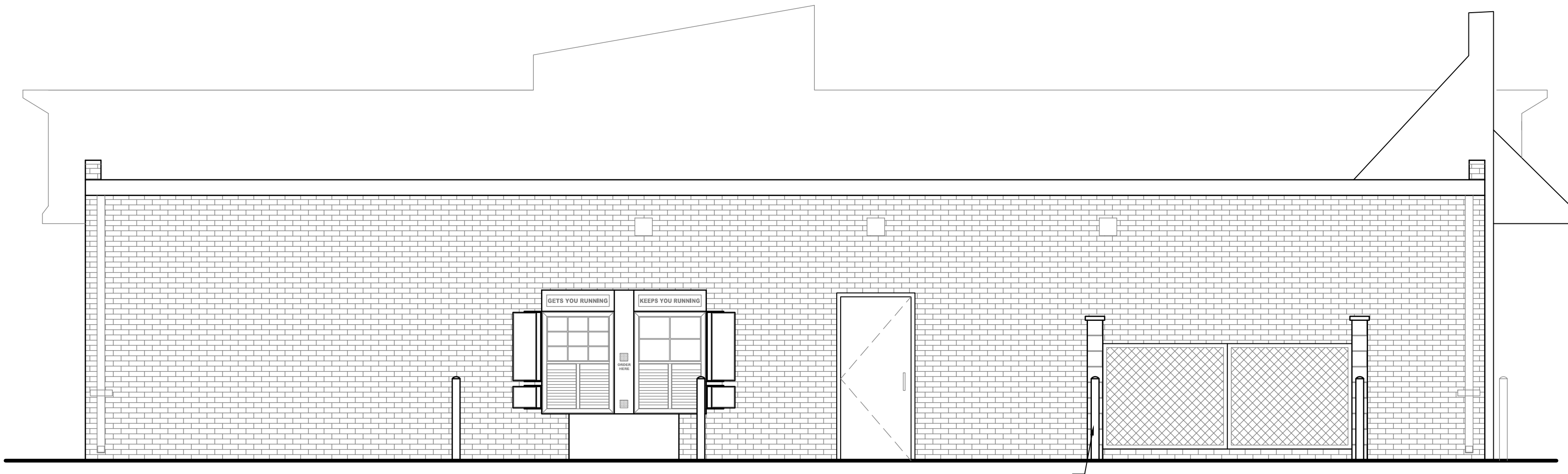
1 NORTH ELEVATION  
1/4" = 1'-0"



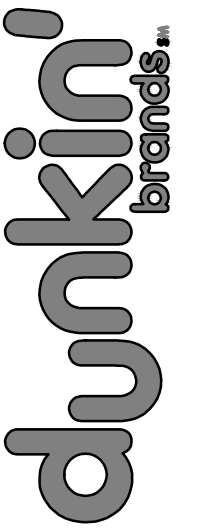
3 EAST ELEVATION  
1/4" = 1'-0"



2 WEST ELEVATION  
1/4" = 1'-0"



4 SOUTH ELEVATION  
1/4" = 1'-0"



MRV

ARCHITECTS, INC.

5105 TOLLVIEW DR., SUITE 197  
ROLLING MEADOWS, IL 60008

ALL DRAWINGS, SPECIFICATIONS AND PLANS ARE  
INSTRUMENTS OF SERVICE. THEREFORE ARE  
PROPERTY OF MRV ARCHITECTS, INC. THEY MAY NOT  
BE REUSED, COPIED OR REPRODUCED WITHOUT  
PERMISSION AND EXPRESS WRITTEN CONSENT OF  
MRV ARCHITECTS

REVISION	DESCRIPTION	ISSUE DATES	DRAWN	CHECKED	DATE	PROJECT No	18037
1							
2							
3							
4							
5							
6							
7							
8							
9							
10							
11							
12							
13							
14							
15							
16							
17							
18							
19							
20							
21							
22							
23							
24							
25							
26							
27							
28							
29							
30							
31							
32							
33							
34							
35							
36							
37							
38							
39							
40							
41							
42							
43							
44							
45							
46							
47							
48							
49							
50							
51							
52							
53							
54							
55							
56							
57							
58							
59							
60							
61							
62							
63							
64							
65							
66							
67							
68							
69							
70							
71							
72							
73							
74							
75							
76							
77							
78							
79							
80							
81							
82							
83							
84							
85							
86							
87							
88							
89							
90							
91							
92							
93							
94							
95							
96							
97							
98							
99							
100							

EXISTING CONDITIONS

DUNKIN' DONUTS  
105 W. DUNDEE RD.  
ARLINGTON HEIGHTS, IL

PC# 310168

SHEET

A-4

4 OF 7



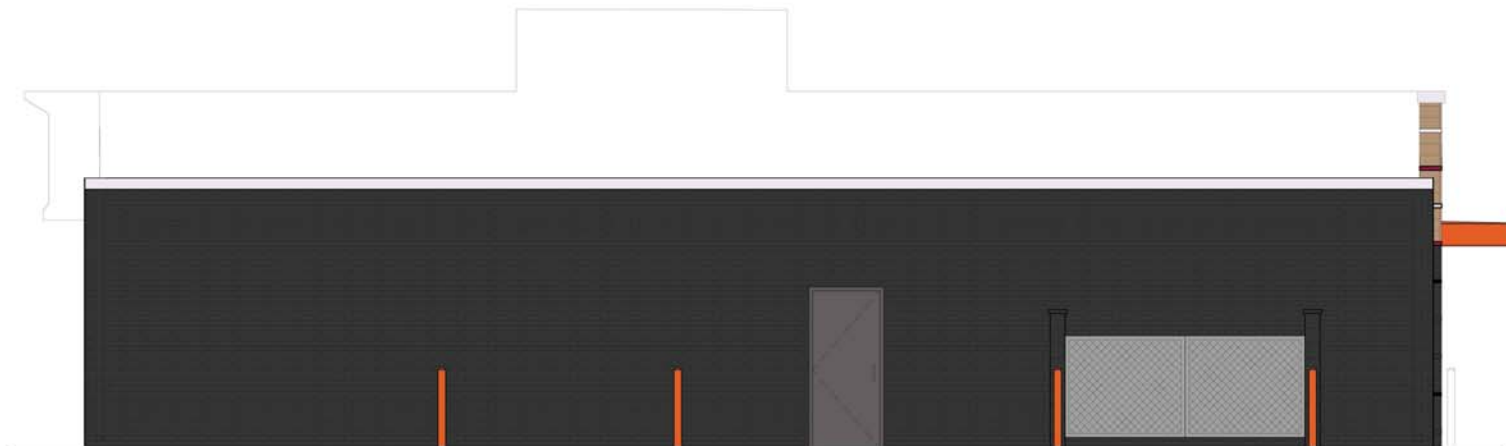
1 NORTH ELEVATION  
1/4" = 1'-0"



3 EAST ELEVATION  
1/4" = 1'-0"



2 WEST ELEVATION  
1/4" = 1'-0"



4 SOUTH ELEVATION  
1/4" = 1'-0"



MRV

ARCHITECTS, INC.



5105 TOLLVIEW DR., SUITE 197  
ROLLING MEADOWS, IL 60008

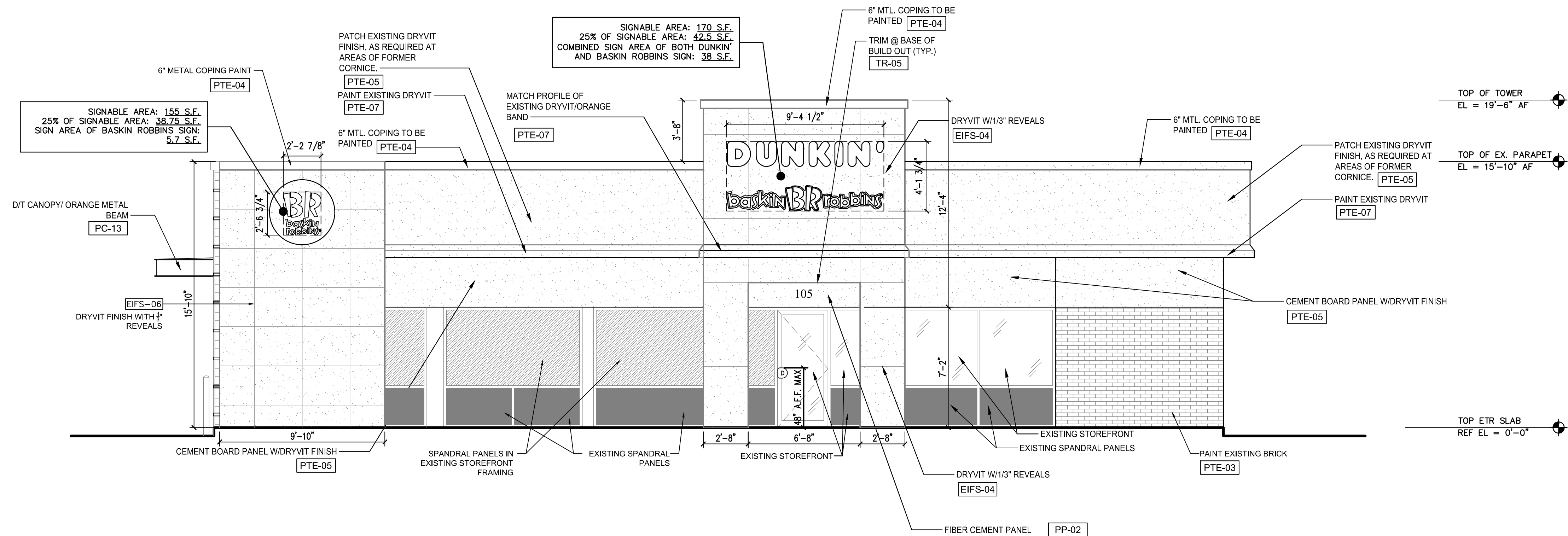
ALL DRAWINGS, SPECIFICATIONS AND PLANS ARE  
INSTRUMENTS OF SERVICE. THEREFORE ARE  
PROPERTY OF MRV ARCHITECTS, INC. THEY MAY NOT  
BE REPRODUCED, COPIED OR REPRODUCED WITHOUT  
PERMISSION AND EXPRESS WRITTEN CONSENT OF  
MRV ARCHITECTS.

REVISION	DESCRIPTION	ISSUE DATES	DRAWN	CHECKED	DATE	PROJECT NO.	JT	MY	10-10-18	18037

DUNKIN' DONUTS  
105 W. DUNDEE RD.  
ARLINGTON HEIGHTS, IL  
PC# 310168

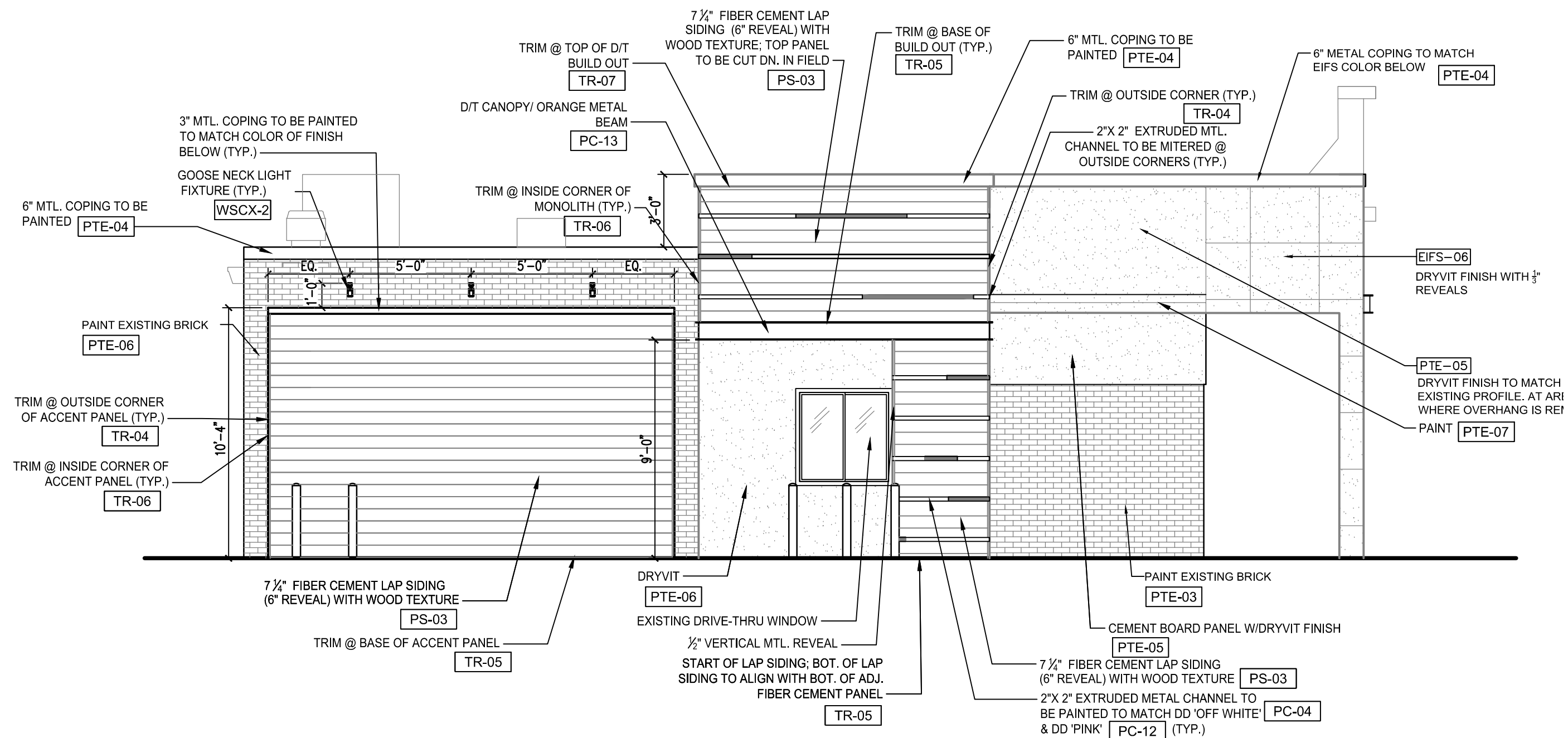
1 NORTH ELEVATION

1/4" = 1'-0"

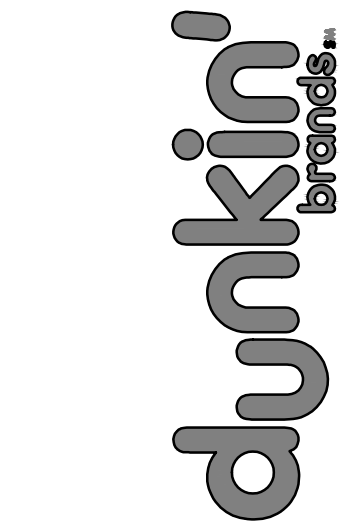


EXTERIOR FINISH SCHEDULE — NEXT GEN IMAGE — ALL FINAL FINISHES TBD — TRESPA SIDING				
CODE	MATERIAL	MANUFACTURER	PRODUCT NO	DESCRIPTION/REMARKS
EIFS-04	EIFS	DRYVIT SYSTEMS, INC.	"WHITE" EIFS; DRYVIT #DUDO 23 2736 ST; MATCH SW 7063 NEBULOUS WHITE SANDPEBBLE FINISH	ROBERT DAZAL C: 734-276-0404 BOB.DAZAL@DRYVIT.COM
EIFS-05	EIFS	DRYVIT SYSTEMS, INC.	DUDO-10-1020	
EIFS-06	EIFS	DRYVIT SYSTEMS, INC.	MATCH PTE-08	
PTE-02	PAINT	SHERWIN WILLIAMS	SW 7069 "IRON ORE"	PLACE ORDER WITH LOCAL SHERWIN WILLIAMS STORE. FOR A STORE NEAR YOU CALL: 800-474-3794 JM COOLEY NATIONAL ACCOUNT EXECUTIVE 770 DEDHAM ST, SUITE 5 CANTON, MA 02021 M: 617-595-7126 O: 781-828-3551 F: 781-828-3199 EMAIL: JAMES.COOLEY@SHERWIN.COM
PTE-03	PAINT	SHERWIN WILLIAMS	SW 7064 "PASSIVE"	
PTE-04	PAINT	SHERWIN WILLIAMS	SW 7063 "NEBULOUS WHITE"	
PTE-05	PAINT	SHERWIN WILLIAMS	SW7066 "GRAY MATTERS"	
PTE-06	PAINT	SHERWIN WILLIAMS	SW 7069 "CHARCOAL"	
PTE-07	PAINT	SHERWIN WILLIAMS	SW 6885 "OBSTINATE ORANGE"	
PTE-08	PAINT	SHERWIN WILLIAMS	PINK CUSTOM MIX	
TR-04	METAL	TAMLYN	(XOCLP34) OUTSIDE CORNER TRIM. USED AT TOWER ELEMENT.	
TR-05	METAL	TAMLYN	(XS516) BOTTOM "STARTER" TRIM. USED AT TOWER ELEMENT.	CLEAR ANODIZED
TR-06	METAL	TAMLYN	(JMH34) VERTICAL TERMINATION TRIM-TYP. USED AT TOWER ELEMENT.	FACTORY FINISH TO MATCH WOOD FINISH
TR-07	METAL	TAMLYN	(JMH716) TOP TRIM USED AT TOWER ELEMENT.	FACTORY FINISH TO MATCH WOOD FINISH
PC-04				
PC-12				
PC-13				
PS-03	FIBER CEMENT	WOODTONE	WOOD PATTERN RUSTIC SERIES WOODTONE	COLOR: "25% SUMMER WHEAT" WOOD PATTERN SURFACE: WOOD PATTERN PLANK DIMENSIONS: 7 1/2"X12"X1/8" THK WITH 6" SIDING EXPOSURE  PAUL ADOLPHE P: 800-663-9844 X1124 PAUL@WOODTONE.COM
BC-1	BOLLARD COVERS	IDEAL SHIELD	BC-1CC-4-52-S	4"W X 52"H ORANGE BOLLARD SLEEVE

2 EAST ELEVATION



EXTERIOR FINISH SCHEDULE



MRV

ARCHITECTS, INC.

5105 TOLLVIEW DR., SUITE 197  
ROLLING MEADOWS, IL 60008

ALL DRAWINGS, SPECIFICATIONS AND PLANS ARE INSTRUMENTS OF SERVICE. THEREFORE ARE PROPERTY OF MRV ARCHITECTS, INC. THEY MAY NOT BE REUSED, COPIED OR REPRODUCED WITHOUT PERMISSION AND EXPRESS WRITTEN CONSENT OF MRV ARCHITECTS

REVISION	DESCRIPTION	ISSUE DATES				PROJECT No	DATE	CHECKED	DRAWN	JT
		1	2	3	4					
1						18037	10-10-18	MV	JT	

PROPOSED EXTERIOR ELEV.

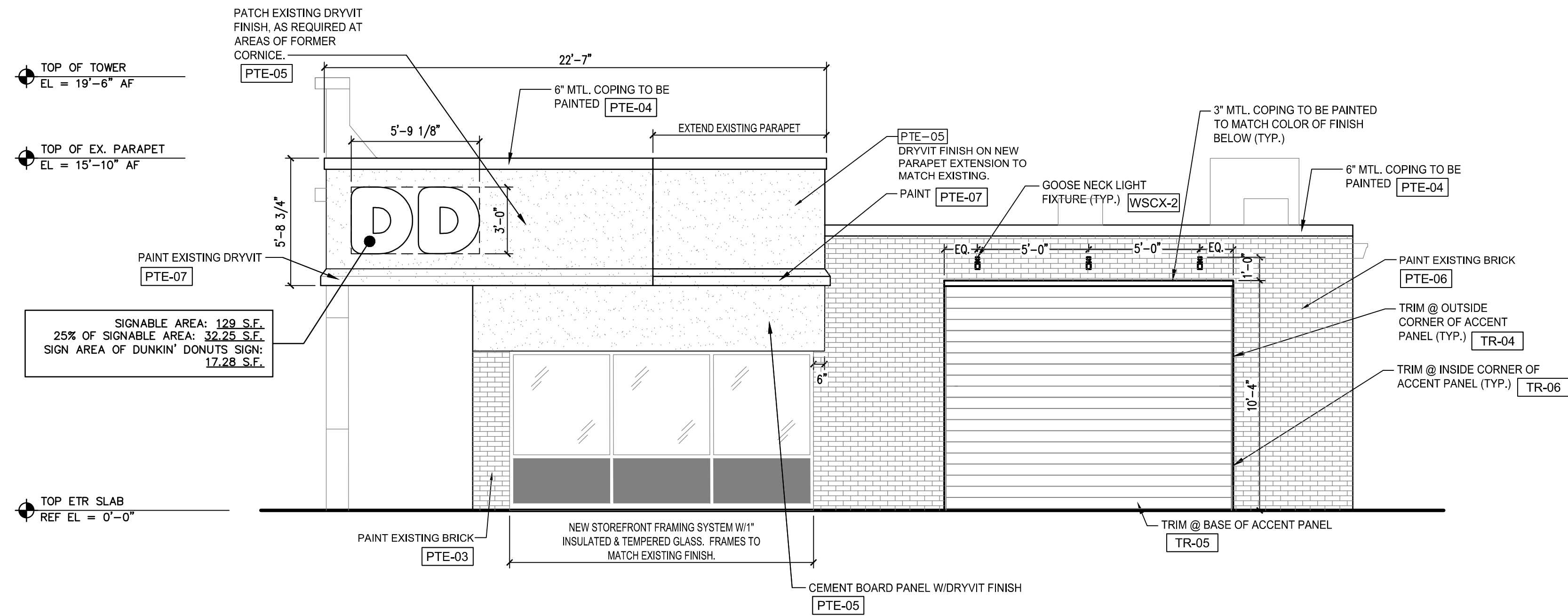
DUNKIN' DONUTS  
105 W. DUNDEE RD.  
ARLINGTON HEIGHTS, IL

PC# 310168

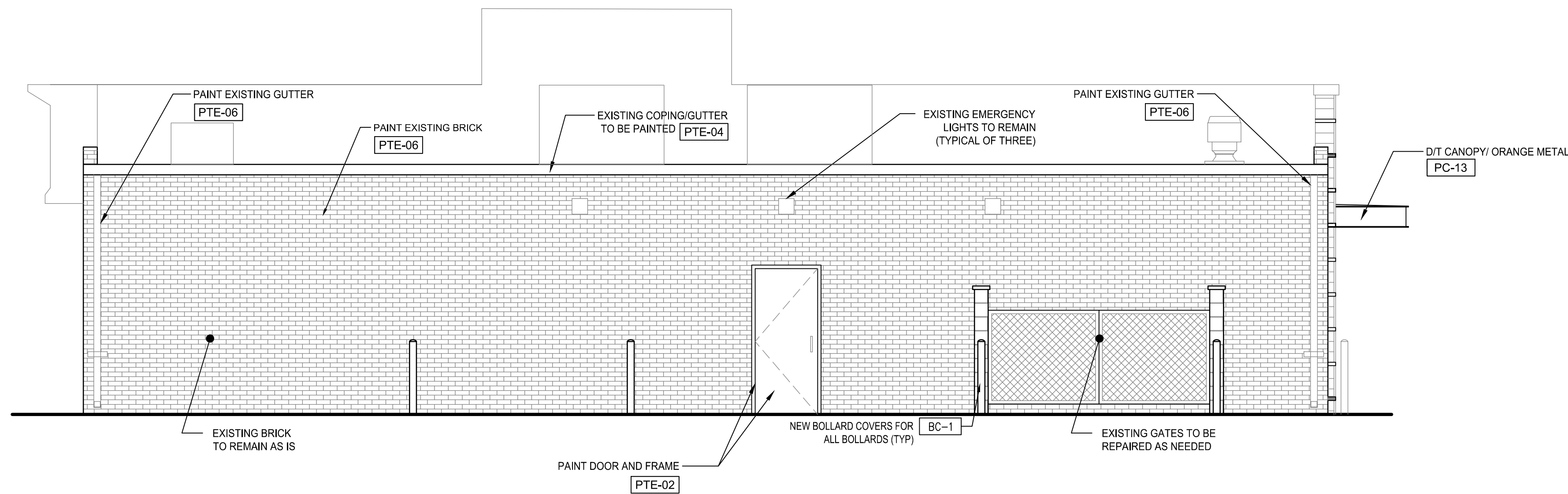
SHEET

A-5

5 OF 7



1 WEST ELEVATION  
1/4" = 1'-0"



2 SOUTH ELEVATION  
1/4" = 1'-0"

dunkin'  
brands

MRV  
ARCHITECTS, INC.  
5105 TOLLVIEW DR., SUITE 197  
ROLLING MEADOWS, IL 60008

ALL DRAWINGS, SPECIFICATIONS AND PLANS ARE INSTRUMENTS OF SERVICE. THEREFORE ARE PROPERTY OF MRV ARCHITECTS, INC. THEY MAY NOT BE REUSED, COPIED OR REPRODUCED WITHOUT PERMISSION AND EXPRESS WRITTEN CONSENT OF MRV ARCHITECTS.

REVISION	DESCRIPTION	ISSUE DATES	DRAWN	CHECKED	DATE	PROJECT NO.
1			JT	NW	10-10-18	18037

PROPOSED EXTERIOR ELEV.

DUNKIN' DONUTS  
105 W. DUNDEE RD.  
ARLINGTON HEIGHTS, IL

PC# 310168

SHEET

A-6

6 OF 7

# *MRV* ARCHITECTS, INC.

5105 Tollview Dr., Suite 197, Rolling Meadows, IL 60008 Ph. (224) 318-2140

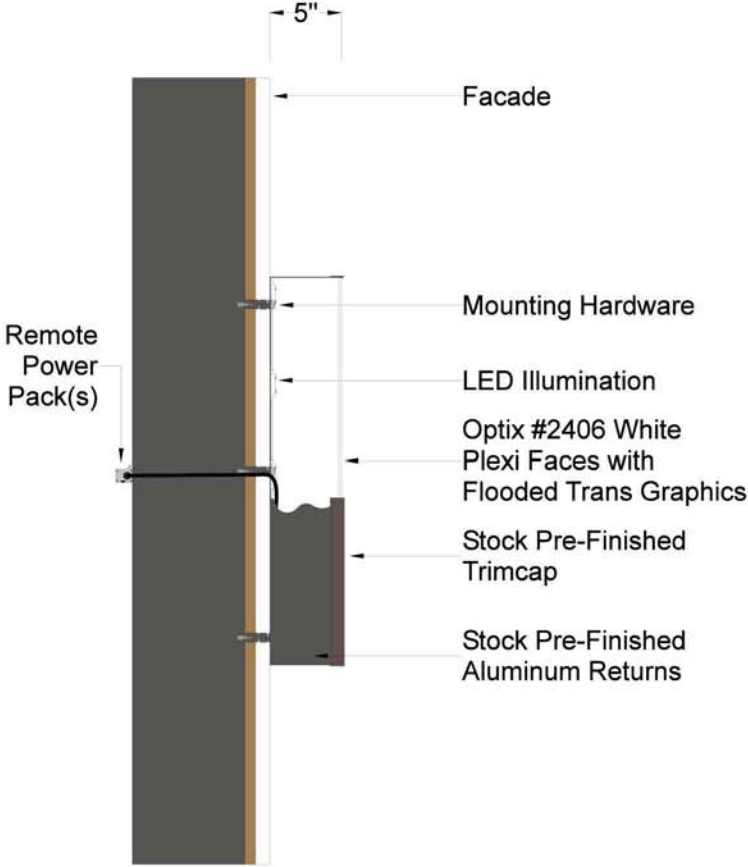
## SAMPLE MATERIAL LIST

1. Petitioner Name: MRV Architects, Inc.
2. Date: 1-17-19
3. Project: Dunkin'/Baskin Robbins
4. Location: 105 W. Dundee Road

## Commercial Signage:

Signage: Plexi-glass internally illuminated, channel sign w/ aluminum returns.





PMS	Vinyl / Paint	SIZE	PMS	Vinyl / Paint	SIZE	H1	W1	S.F (BOX)	S.F (ACT)
PMS 165	3M #3630-3123			3M #3630-3123	Sm.	18"	102"		
PMS 219	3M #3630-1379			3M #3630-1379	Med.	24"	136"		
PMS 7540	3M #-220-41				Lrg.	30"	170"		
PMS COOL GRAY 1C					Custom	- -			

The intent of this drawing is to show a conceptual representation of the proposed signage. Due to variations in printing devices and substrates the finished product may differ slightly from drawings

DUNKIN' CHANNEL - Fabrication / Install Details

Date: 10/24/2018  
Scale: 1/16"  
Drawn: P.Charboneau

DD-BS-01  
DRAWING NAME:





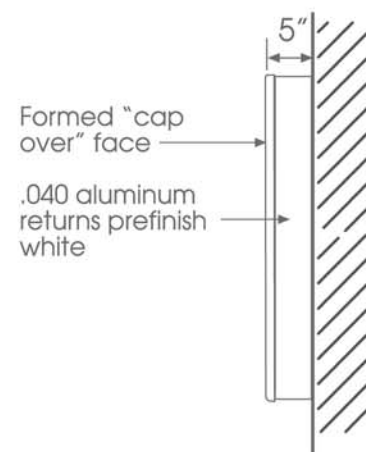


"STACKED" CONFIGURATION

"STACKED" CONFIGURATION

Nominal Size	H	L	W	*Area (sq ft)	ILLUMINATION
12" Letter	23"	12"	6'-5 1/2"	12.37	High output fluorescent lamps and ballasts
18" Letter	34-1/2"	18"	9'-8 1/4"	27.85	
24" Letter	46"	24"	12'-11"	49.51	

NOTE: Dimensions may vary slightly per final engineering of letter sets and signage.



Stacked Cloud Sign- Side View

\*Area (sq ft)= Square Footage identified is calculated by boxing all elements of the cloud sign including the dead space.



"IN-LINE" CONFIGURATION- FULL SIZE "BR" LOGO



"IN-LINE" CONFIGURATION- REDUCED SIZE "BR" LOGO

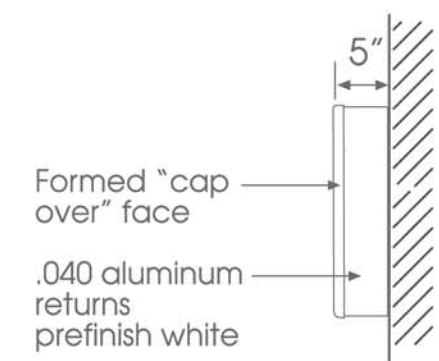
"IN-LINE CONFIGURATION- FULL SIZE "BR"

Nominal Size	H	L	W	*Area (sq ft)	ILLUMINATION
12" Letter	1'-6"	12"	9'-3 3/4"	13.77	High output fluorescent lamps and ballasts
18" Letter	2'-3"	18"	13'-11 5/8"	30.99	
24" Letter	3'-0"	24"	18'-7 1/2"	55.09	

"IN-LINE CONFIGURATION- REDUCED SIZE "BR"

Nominal Size	H	L	W	*Area (sq ft)	ILLUMINATION
12" Letter	12"	12"	9'-0"	9.0	High output fluorescent lamps and ballasts
18" Letter	18"	18"	13'-6"	20.25	
24" Letter	24"	24"	18'-0"	36.0	

NOTE: Dimensions may vary slightly per final engineering of signage.



Inline Cloud Sign- Side View

COLOR & MATERIAL NOTES:

Faces to be white SG Poly vacuum formed with flat vinyl copy leaving white border  
Faces decorated second surface with 3M vinyl films:  
BR Pink- 3M #3630-1091 and BR Blue- 3M #3630-8508  
Cap over design fits over aluminum backs of letters  
Letters to be prefinish white .040 aluminum returns and backs  
Weepholes as required in cans  
H.O. Fluorescent illumination

If questions regarding 3M films, please contact:  
Deborah Giampolo-3M Corporation at 800.714.9865

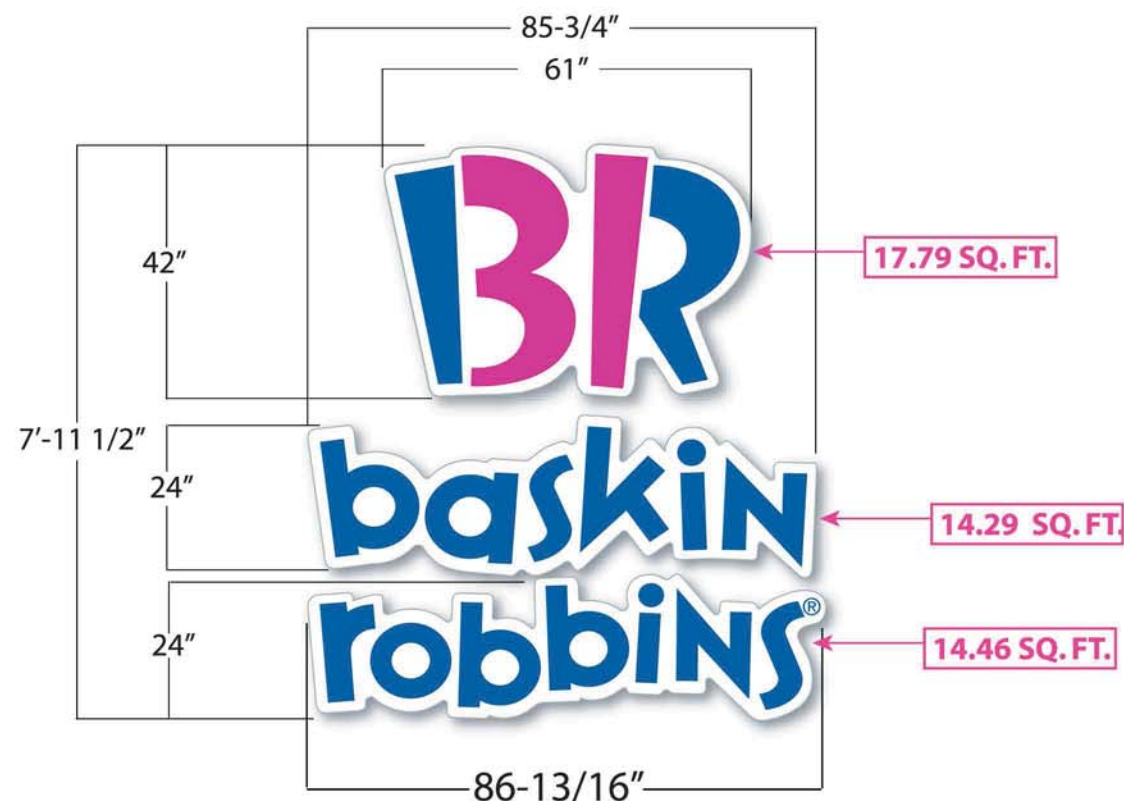
NOTE: THESE DRAWINGS ARE FOR IMAGE DESIGN GUIDANCE ONLY. IT IS THE SOLE RESPONSIBILITY OF THE ARCHITECTS AND ENGINEERS RETAINED BY THE FRANCHISEE TO PREPARE ALL NECESSARY CONSTRUCTION DOCUMENTS FOR THE PARTICULAR PROJECT LOCATION. DUNKIN' BRANDS, INC., THEIR AGENTS AND EMPLOYEES, DO NOT WARRANT THE ACCURACY OF THESE DRAWINGS. NOR DOES DUNKIN' BRANDS, INC. GUARANTEE THAT THESE DRAWINGS AND THEIR COMPONENTS MEET THE REQUIREMENTS OF ANY FEDERAL, STATE OR LOCAL LAWS, REGULATIONS, ORDINANCES, BUILDING CODES OR INDIVIDUAL SITE CONDITIONS. IT IS THE SOLE RESPONSIBILITY OF THE FRANCHISEE AND OF THE ARCHITECT AND ENGINEERS RETAINED BY THE FRANCHISEE TO ENSURE COMPLIANCE WITH ALL APPLICABLE LAWS, REGULATIONS, ORDINANCES, CODES AND OTHER REQUIREMENTS, INCLUDING, WITHOUT LIMITATION, AMERICANS WITH DISABILITIES ACT.

 **Everbrite**  
4949 South 110th Street  
PO Box 20020  
Greenfield, WI 53220-0020  
414.529.7131

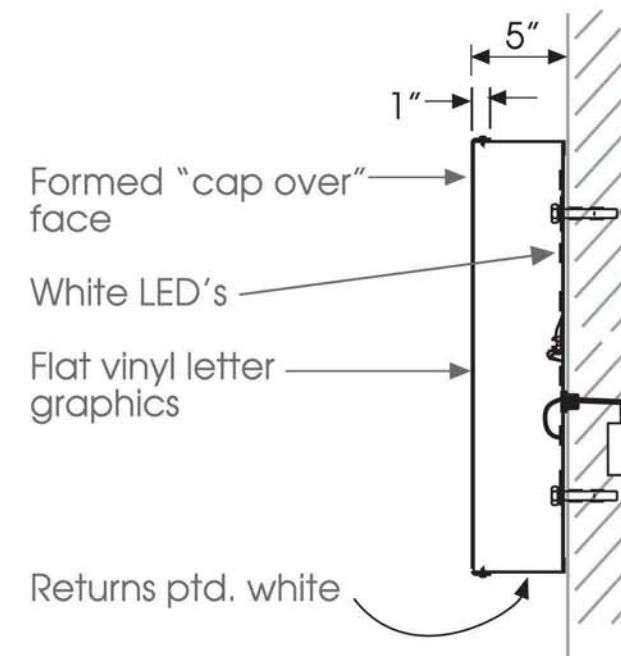
**DUNKIN' BRANDS™**  
 **[eatdrinkthink™]**

Revisions:	BR Cloud Logo/Letters	Date: 8/26/08
		Scale: NTS
		Drawn: C HART
		BS-1
	FILE	

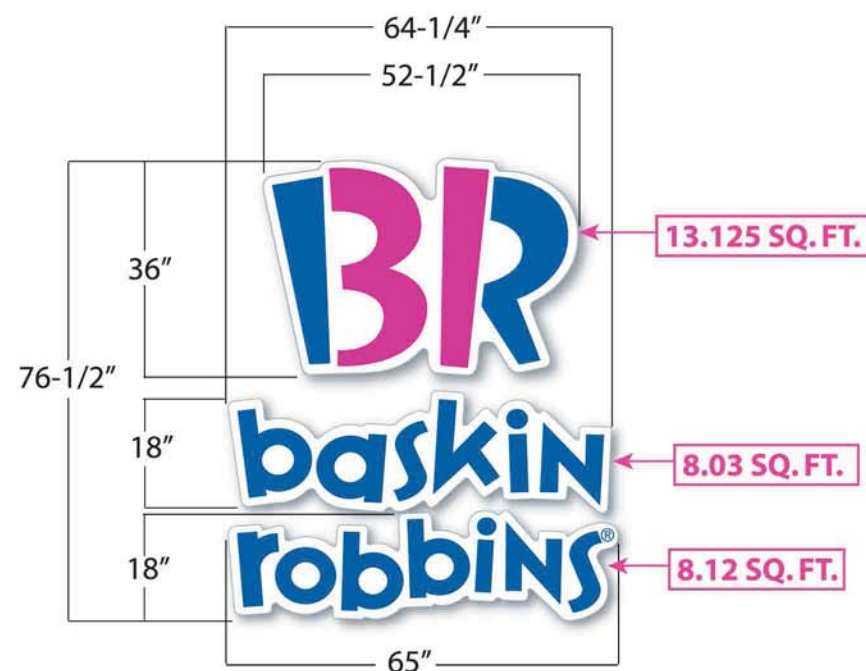




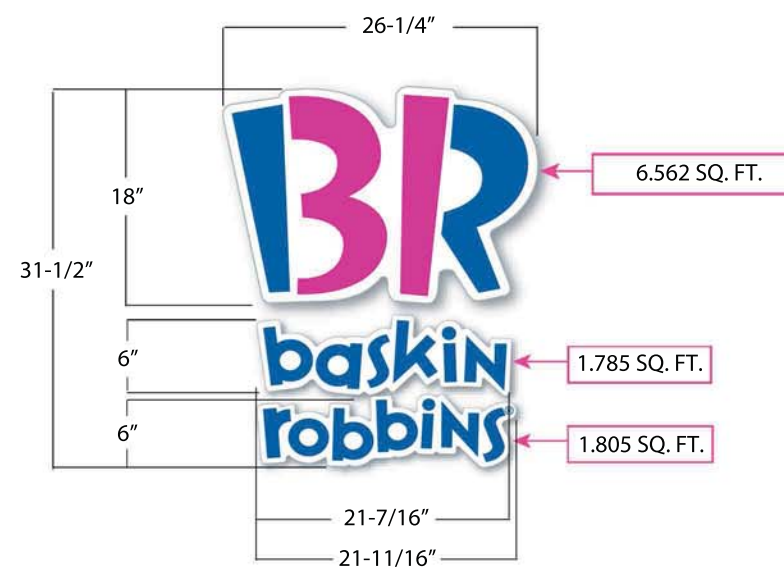
42" LED BR CLOUD LOGO/24" LED BR CLOUD LETTERS- **57.57 SQ.FT.**



LED Cloud Logo/Letters- Side View



36" LED BR CLOUD LOGO/18" LED BR CLOUD LETTERS- **34.53 SQ.FT.**



18" LED BR CLOUD LOGO/ 6 " LED BR CLOUD LETTERS- **11.48 SQ. FT.**

#### COLOR & MATERIAL NOTES:

Faces: Formed clear solar grade polycarbonate, decorated 2nd surface vinyl.  
 Vinyl colors: BR Pink- 3M #3630-1091; BR Blue- 3M #3630-8508  
 Formed cap-over face fits over aluminum returns ptd. white  
 Cabinet is 5" deep  
 Illumination: White LED's

NOTE: THESE DRAWINGS ARE FOR IMAGE DESIGN GUIDANCE ONLY. IT IS THE SOLE RESPONSIBILITY OF THE ARCHITECTS AND ENGINEERS RETAINED BY THE FRANCHISEE TO PREPARE ALL NECESSARY CONSTRUCTION DOCUMENTS FOR THE PARTICULAR PROJECT LOCATION. DUNKIN' BRANDS, INC., THEIR AGENTS AND EMPLOYEES, DO NOT WARRANT THE ACCURACY OF THESE DRAWINGS, NOR DOES DUNKIN' BRANDS, INC. GUARANTEE THAT THESE DRAWINGS AND THEIR COMPONENTS MEET THE REQUIREMENTS OF ANY FEDERAL, STATE OR LOCAL LAWS, REGULATIONS, ORDINANCES, BUILDING CODES OR INDIVIDUAL SITE CONDITIONS. IT IS THE SOLE RESPONSIBILITY OF THE FRANCHISEE AND OF THE ARCHITECT AND ENGINEERS RETAINED BY THE FRANCHISEE TO ENSURE COMPLIANCE WITH ALL APPLICABLE LAWS, REGULATIONS, ORDINANCES, CODES AND OTHER REQUIREMENTS, INCLUDING, WITHOUT LIMITATION, AMERICANS WITH DISABILITIES ACT.

 **Everbrite**  
 4949 South 110th Street  
 PO Box 20020  
 Greenfield, WI 53220-0020  
 414.529.7131

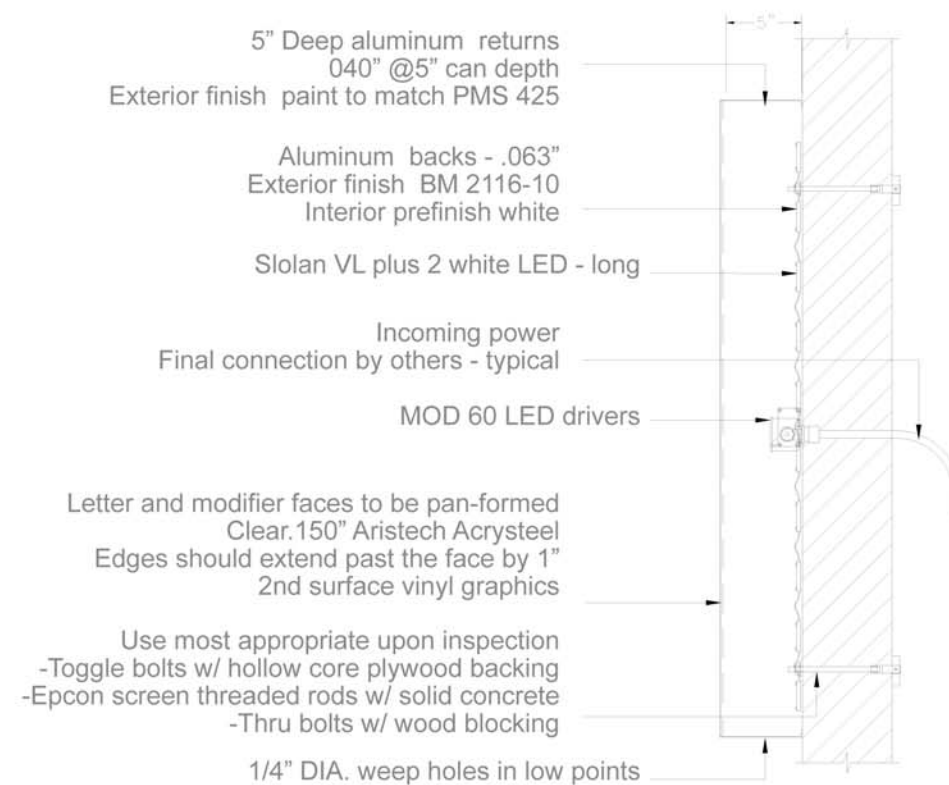
**DUNKIN' BRANDS™**  
 **[eatdrinkthink™]**

Revisions:

Fresh Brew BR LED  
 S/F Cloud Signs

FILE

Date: 2/07/13  
 Scale: NTS  
 Drawn: C HART  
**BS-7**



### SIDE VIEW LETTERS DETAIL

TYPICAL - N.T.S.

PMS	Vinyl / Paint	SIZE	H1	W1	S.F (BOX)	
PMS 165	3M #3630-3123	Sm.	36"	69.4"		
PMS 219	3M #3630-1379	Med.	45"	86.75"		
PMS 7540	3M #-220-41	Lrg.	54"	104"		
PMS COOL GRAY 1C		Custom	--	--		

The intent of this drawing is to show a conceptual representation of the proposed signage. Due to variations in printing devices and substrates the finished product may differ slightly from drawings

#### DD CHANNEL - Fabrication / Install Details

Date: 10/24/2018

Scale: 1/16"

Drawn: P.Charboneau

**DD-BS-02**  
DRAWING NAME:

**DUNKIN'**