

RECEIVED

JAN 07 2020

PLANNING & COMMUNITY
DEVELOPMENT DEPARTMENT

Letter of Intent In Support of Request for Sign Variance

FILE

Arlington Beer Company, Inc.

19 N. Hickory Ave, Arlington Heights, IL 60004

This Letter of Intent is in support of our request for a variance to the permitted signage for the property at 19 N. Hickory Ave, Arlington Heights, IL 60004. Arlington Beer Company, Inc. is asking for sign variance based on the location of the property and the necessity of signage for recognition by patrons.

The variance will not alter the essential character of the locality. The variance would not create a traffic hazard, a depreciation of nearby property values or otherwise be detrimental to the public health, safety, morals and welfare of the community. We would ask the board to consider these variations as they would allow us to successfully identify our business and allow us to reasonably function within our use.

Respectfully,



Kathleen Egan

Arlington Beer Company, Inc.

0 50 100ft

N Douglas Ave

5

6

21-24

100

Hickory Ave

N Hickory Ave

N Hickory Ave

N Hickory Ave

N Hickory Ave

3

9

11

15

19

25

29

35

101

E Wing St

E Wing St

E Wing St

E Hamlin Ln

N Beverly Ln

Private

5

9

15

19

23

27

31

35

39

51

47

43

40

44

48

44

40

36

32

28

36

44

40

48

704

706

708

710

712

714

716

705

707

709

711

713

715

717

805

807

809

811

813

815

825

827

829

831

833

835

804

806

808

810

812

814

824

826

828

830

832

834

Map | Photo > | Terrain > | Layers >



THREE SITES TO THE LEFT



SUBJECT PROPERTY

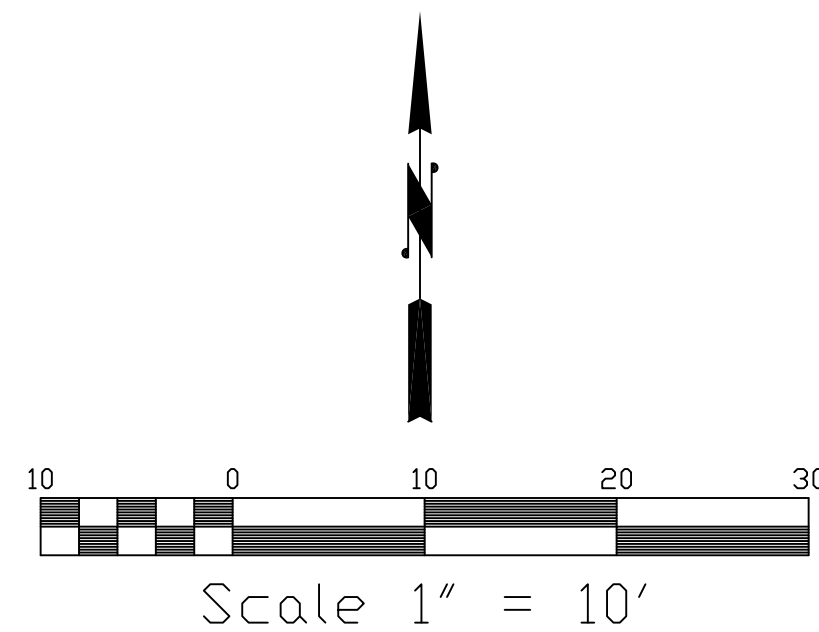


THREE SITES TO THE RIGHT

HICKORY AVENUE

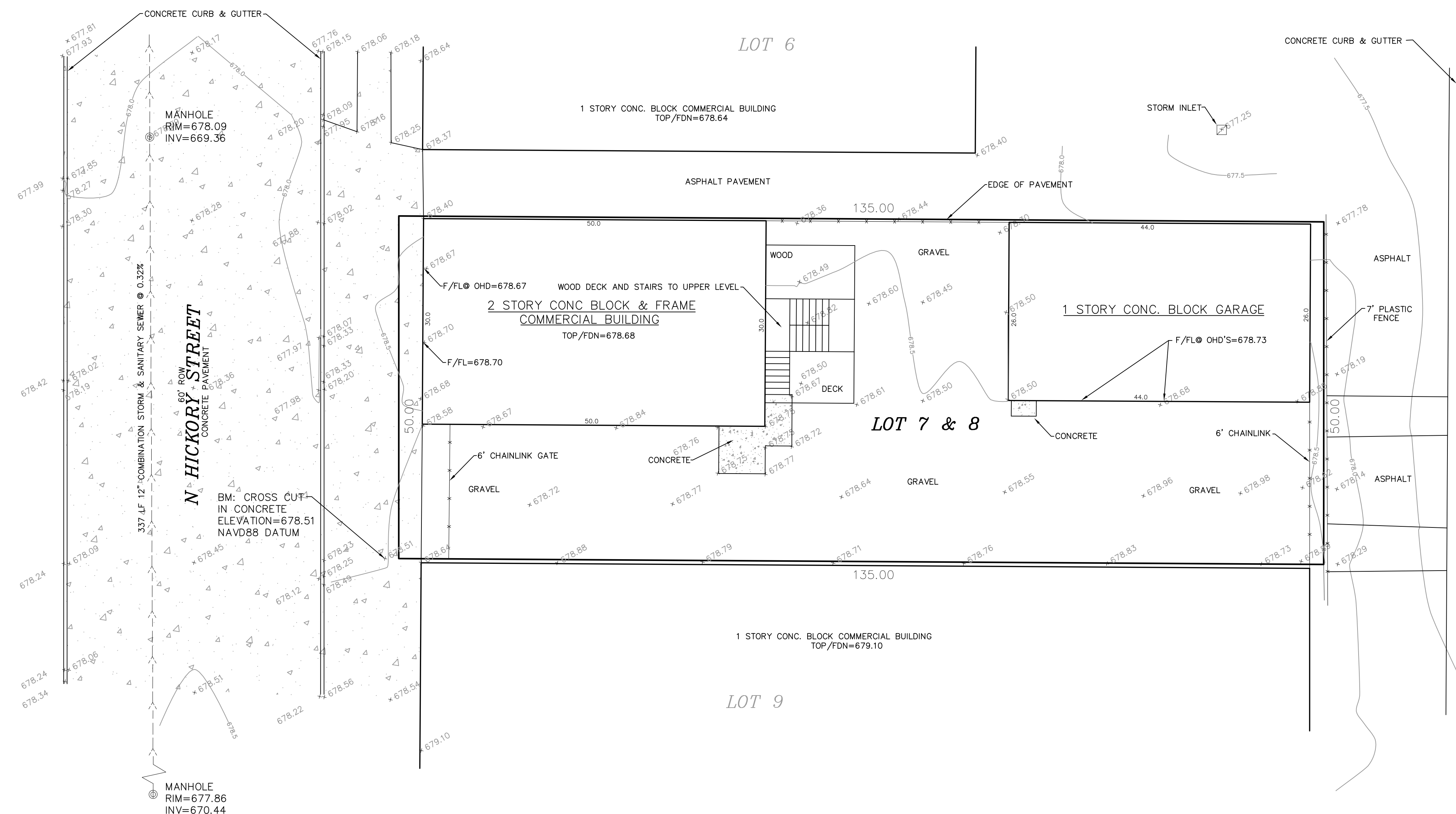
THREE SITES ACROSS THE STREET





LEGEND

- EXISTING CONTOUR
- EXISTING SPOT ELEVATION



CLIENTS: KATHLEEN EGAN (312) 339-2499
FRANK MADARAS (630) 222-2711
P.O. BOX 401
ITASKA, IL. 60143

COPYRIGHT © 2019 BY CES, INC.

CONTINENTAL ENGINEERS & SURVEYORS, INC.
Consulting Engineers • Land Surveyors • Planners
Illinois Professional Design Firm #184-003402
1315 FAIRMONT ROAD, HOFFMAN ESTATES, ILLINOIS 60169
(847)885-3326 FAX:(847)885-3496

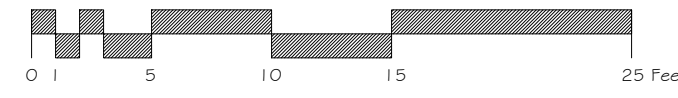
TOPOGRAPHIC SURVEY
FOR
19 N. HICKORY STREET
ARLINGTON HEIGHTS, ILLINOIS

Designed By	TRC	Approved By	MCR
Scale: 1"=10'	Book No.	Project No.	19-119
Date 6/3/19	Drawn By	WJB	Sheet 1 Of 1



IMPORTANT
VERIFY BUILDING LINES AND EASEMENTS
PRIOR TO CONSTRUCTION.

DIMENSIONED SITE PLAN
SCALE: 1" = 8'-0"



Arlington Beer Company
19 N. Hickory
Arlington Heights
Illinois

PROJECT
Landscape Improvements
DRAWING NUMBER
LS-3
DRAWING TITLE
Dimensioned Site Plan
SHEET NUMBER

3 of 3
SCALE
1" = 8'-0"

DESIGNED/DRAWN BY
JAC

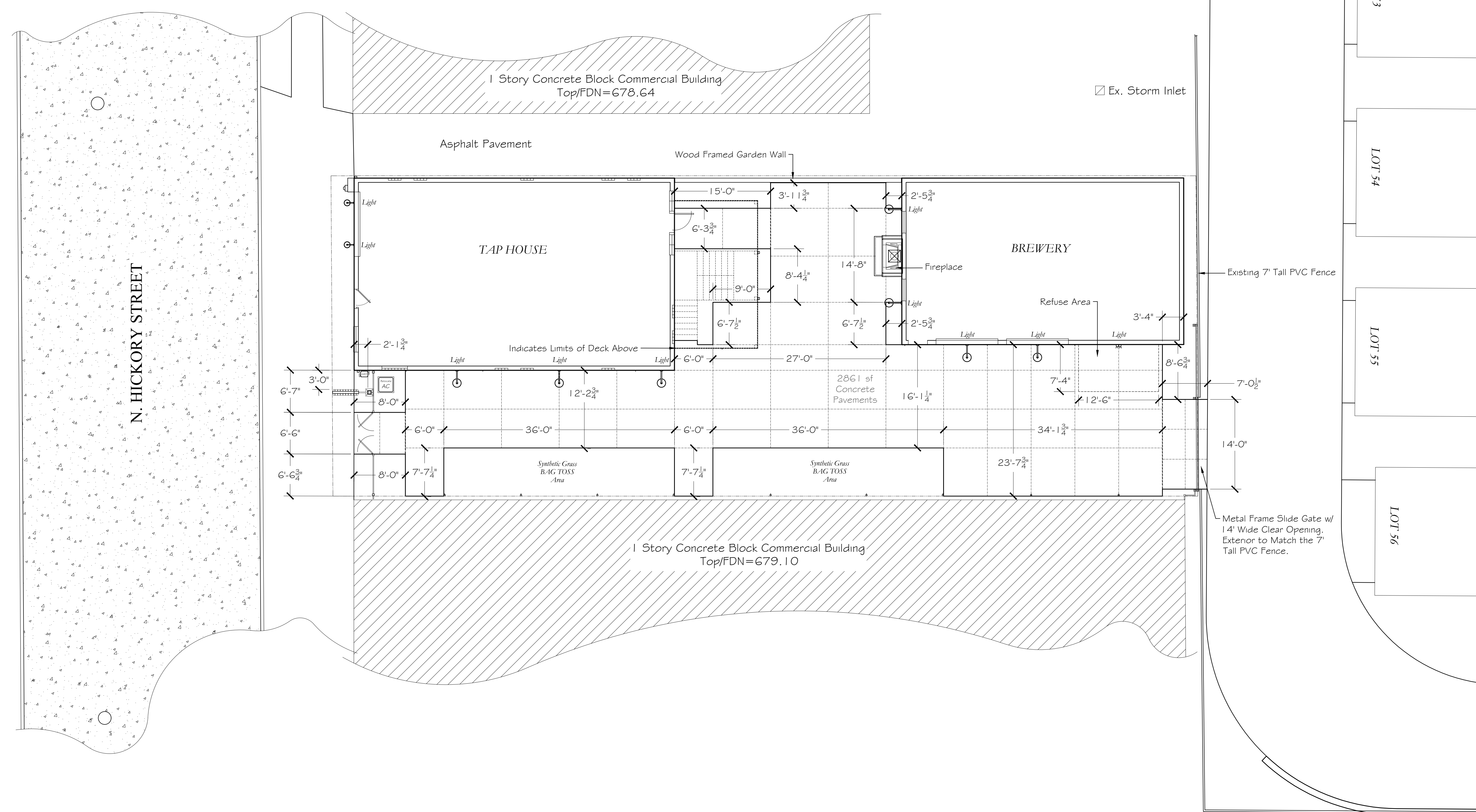
ISSUE	DESCRIPTION	DATE
#1	For Review	19.0912
#2	For Review	19.0930
#3	For Review	19.1007
#4	For Review	19.1012
#5	For Submittal	19.1111
#6	For Review	20.0227
#7	For Submittal	20.0302

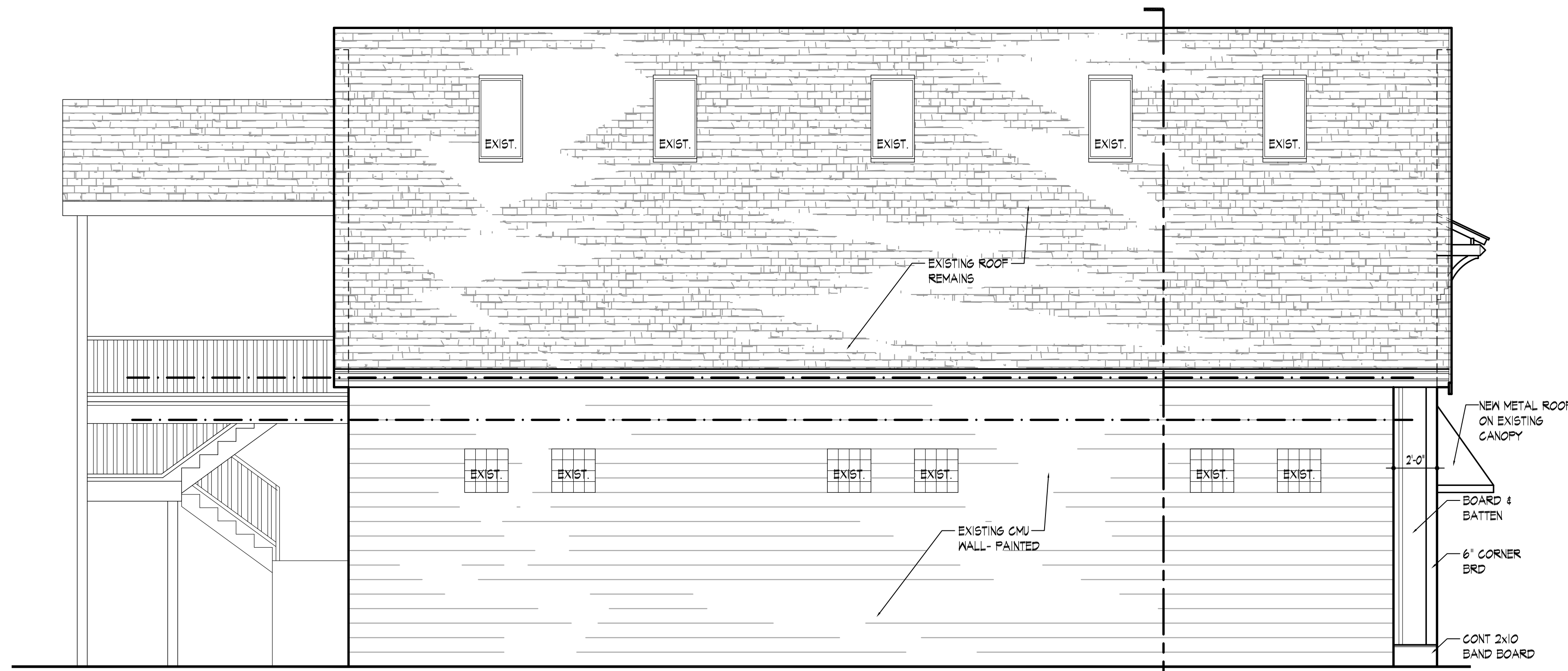
THIS PLAN IS PROTECTED BY COPYRIGHT. NO REPRODUCTION OR USE IN WHOLE OR PART SHALL BE MADE WITHOUT THE WRITTEN CONSENT OF CARLSON LANDSCAPE ASSOCIATES, INC. IN THE EVENT THAT RIGHTS TO THE CONTENTS OF THIS PLAN ARE RELEASED BY CARLSON LANDSCAPE ASSOCIATES, INC., THE SIGNATURE BLOCK BELOW WILL BE COMPLETE AND CARRY THE CORPORATE SEAL.

LANDSCAPE ARCHITECT

DATE

LS-3

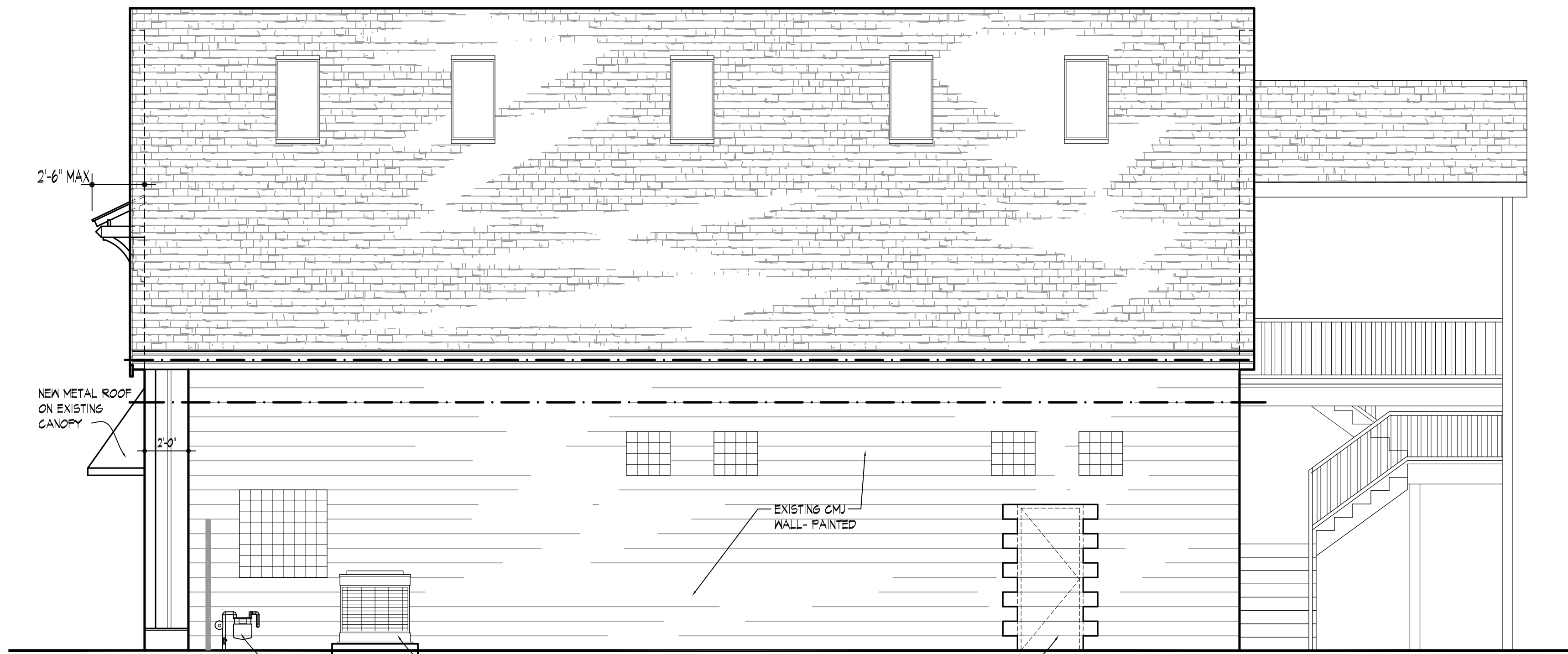




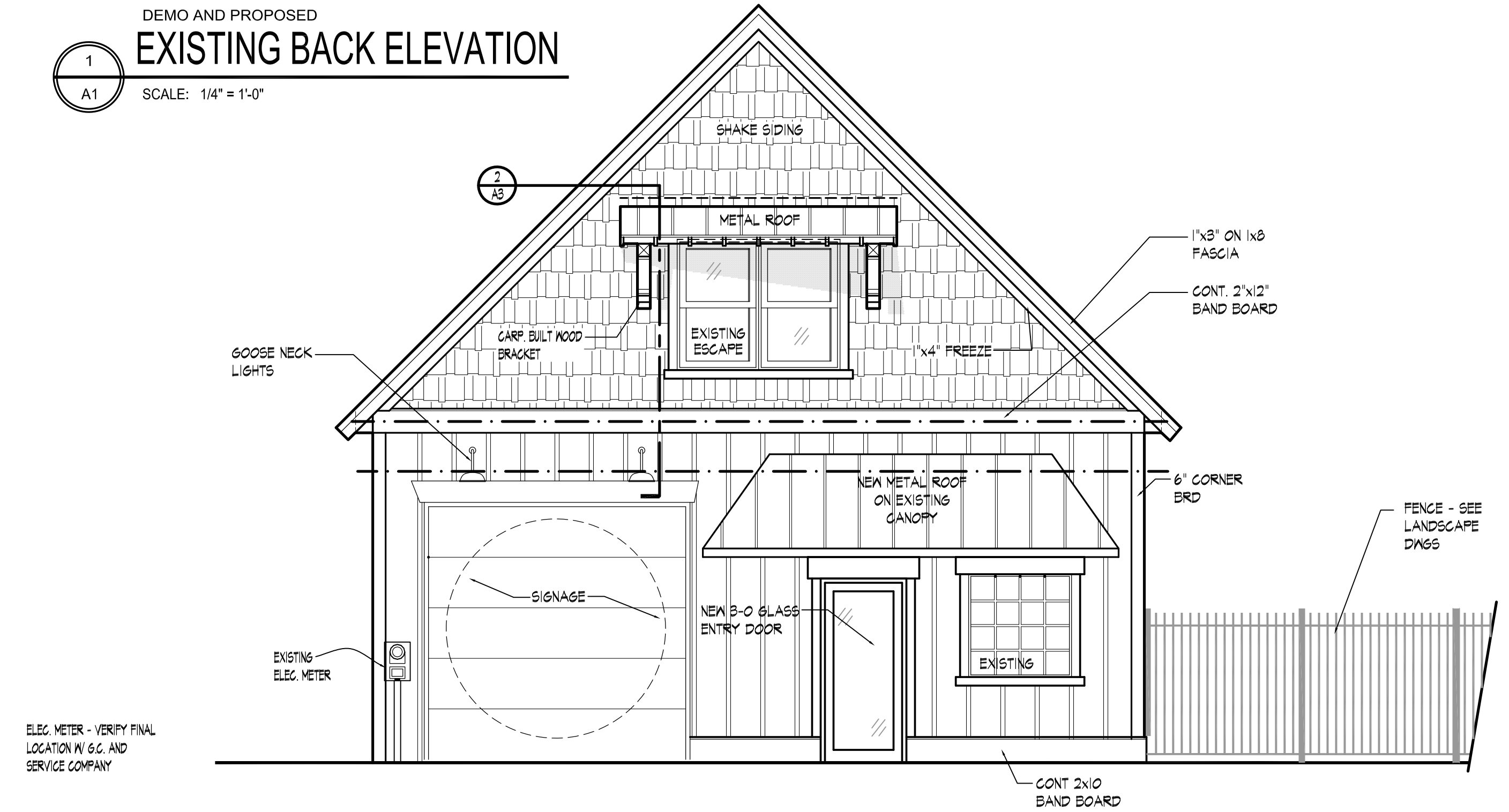
1
A1
DEMO AND PROPOSED
EXISTING RIGHT ELEVATION
SCALE: 1/4" = 1'-0"



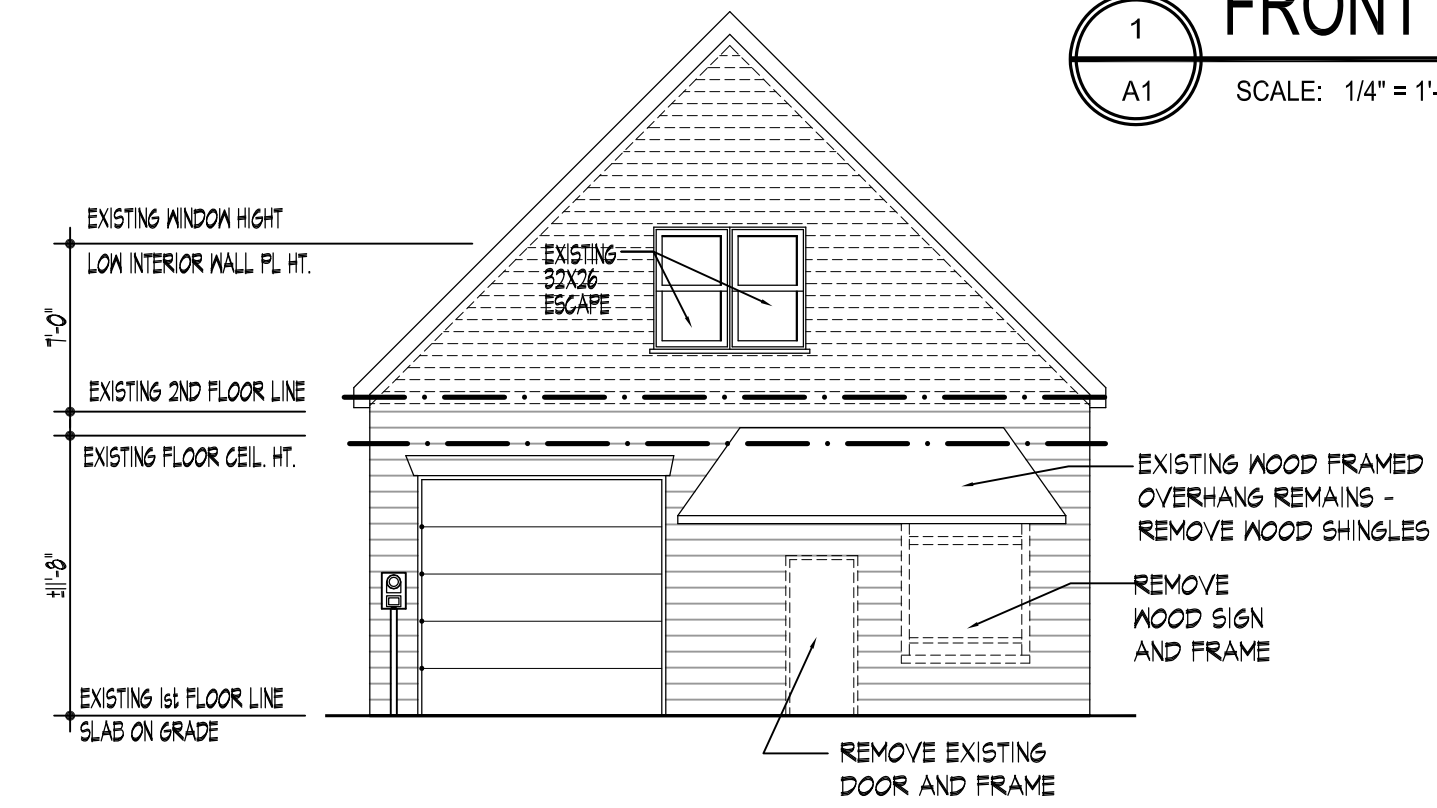
1
A1
DEMO AND PROPOSED
EXISTING BACK ELEVATION
SCALE: 1/4" = 1'-0"



1
A1
EXISTING LEFT ELEVATION
SCALE: 1/4" = 1'-0"



1
A1
PROPOSED
FRONT ELEVATION
SCALE: 1/4" = 1'-0"



1
A1
FRONT ELEVATION DEMOLITION
SCALE: 1/8" = 1'-0"

TAP HOUSE INTERIOR REMODELING FOR:
ARLINGTON BEER COMPANY
19 N. Hickory Arlington Heights, Illinois

Designed and drawn by:
WILLIAM J DUSZYNSKI
12700 Goldenrod Place, St. John, Indiana
708.308.1975

No.	Date	Revisions:
1	8.30.19	ISSUE FOR REVIEW AND COMMENT

SHEET
A1





signpalace

customer: Arlington Beer Co.
location: 19 Hickory Ave.,
Arlington Heights, IL

work order #: 00000
date: 12.13.19
revision: 00

SIGN PROOF

16" diameter 48" deep reinforced concrete foundation with steel support cage and exposed mounting bolts. Post to mount to foundation via match plate system.

APPROVAL

X _____ Date
Customer Approval

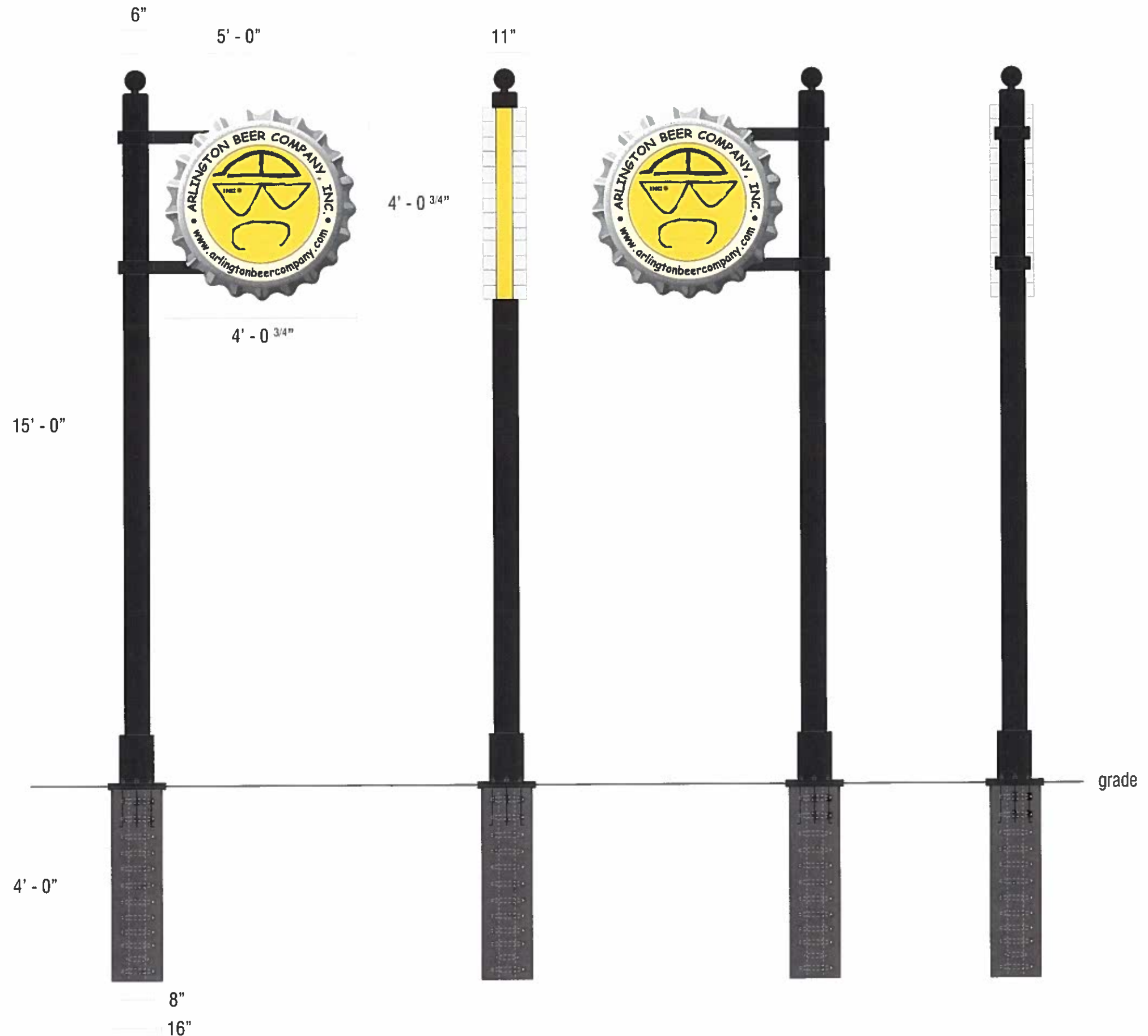
X _____ Date
Landlord Approval

ARTWORK CHARGE INCLUDES 1 DRAWING AND 1 REVISION.
Any subsequent revisions will be billed at \$75/hour.

847.640.1335 signpalace.com

68 north lively blvd. elk grove village, IL 60007

Sign 1 - Freestanding post mounted blade sign



signpalace

customer: Arlington Beer Co.
location: 19 Hickory Ave.,
Arlington Heights, IL

work order #: 00000
date: 12.13.19
revision: 00

SIGN PROOF

description: Double sided internally illuminated vacuum formed polycarbonate blade sign with digitally printed graphic mounted to sign faces. Steel support structure within sign to mount directly to post.

quantity: 1

face size: 4' - 0 3/4" x 4' - 0 3/4"

material: Formed plastic

APPROVAL

X _____
Customer Approval Date

X _____
Landlord Approval Date

ARTWORK CHARGE INCLUDES 1 DRAWING AND 1 REVISION.
Any subsequent revisions will be billed at \$75/hour.

847.640.1335 signpalace.com

68 north lively blvd. elk grove village, IL 60007

4' - 0 3/4"



4' - 0 3/4"

customer: Arlington Beer Co.
 location: 19 Hickory Ave.,
 Arlington Heights, IL

work order #: 00000
 date: 12.13.19
 revision: 00

SIGN PROOF

description: Electrical diagram
 for double sided vacuum formed
 polycarbonate blade sign.

APPROVAL

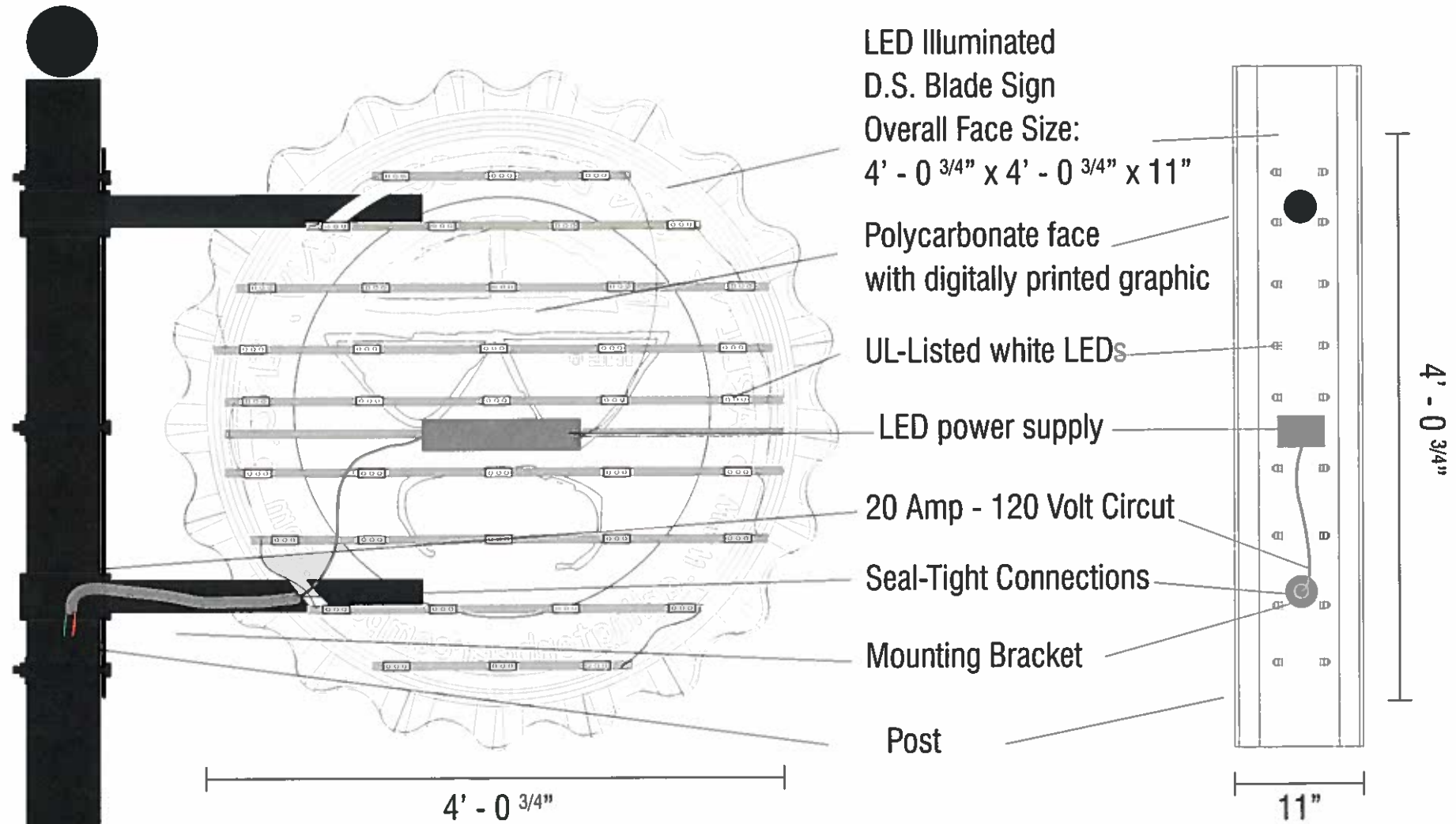
X _____
 Customer Approval Date

X _____
 Landlord Approval Date

ARTWORK CHARGE INCLUDES 1 DRAWING AND 1 REVISION.
 Any subsequent revisions will be billed at \$75/hour.

847.640.1335 | signpalace.com

68 north lively blvd. elk grove village, IL 60007



signpalace

customer: Arlington Beer Co.
location: 19 N. Hickory Ave.,
Arlington Heights, IL

work order #: 00000
date: 12.13.19
revision: 00

SIGN PROOF

description: Digitally printed
adhesive vinyl with matte overlam,
applied direct to store front garage
door
quantity: 1
size: 8' x 8'
material: 3951HT/290M

APPROVAL

X _____
Customer Approval Date

X _____
Landlord Approval Date

ARTWORK CHARGE INCLUDES 1 DRAWING AND 1 REVISION.
Any subsequent revisions will be billed at \$75/hour.

847.640.1335 signpalace.com

68 north lively blvd. elk grove village, IL 60007

8' - 0"



8' - 0"