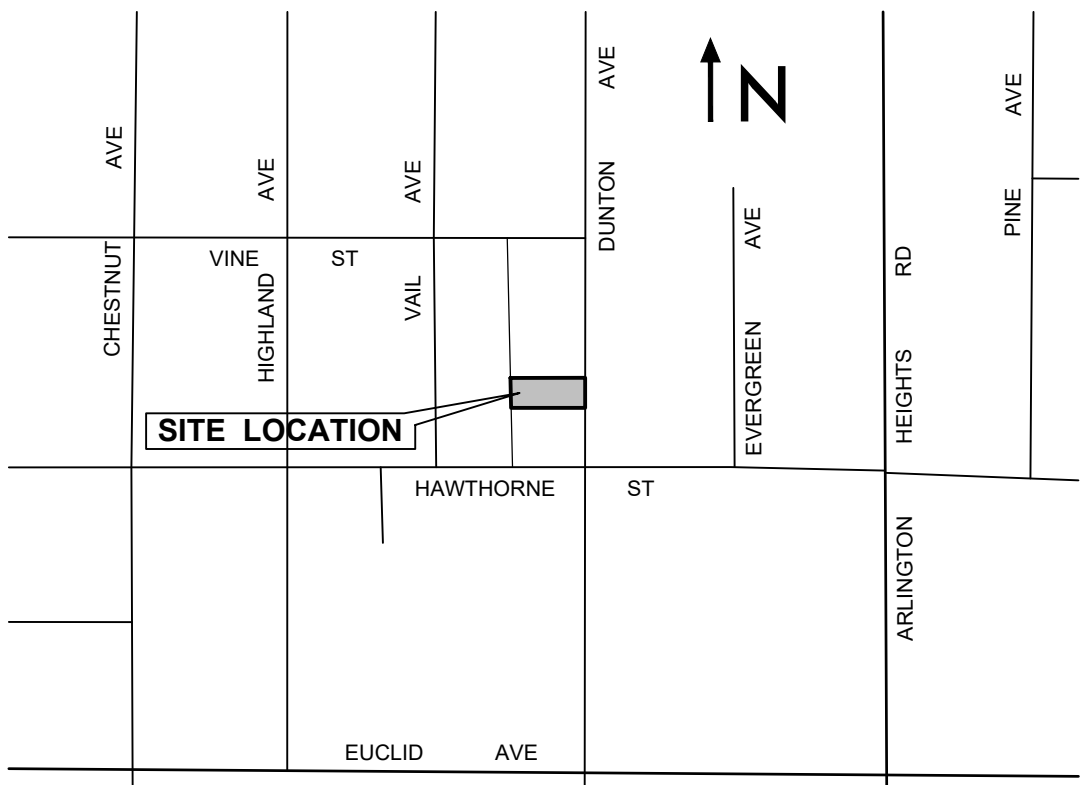


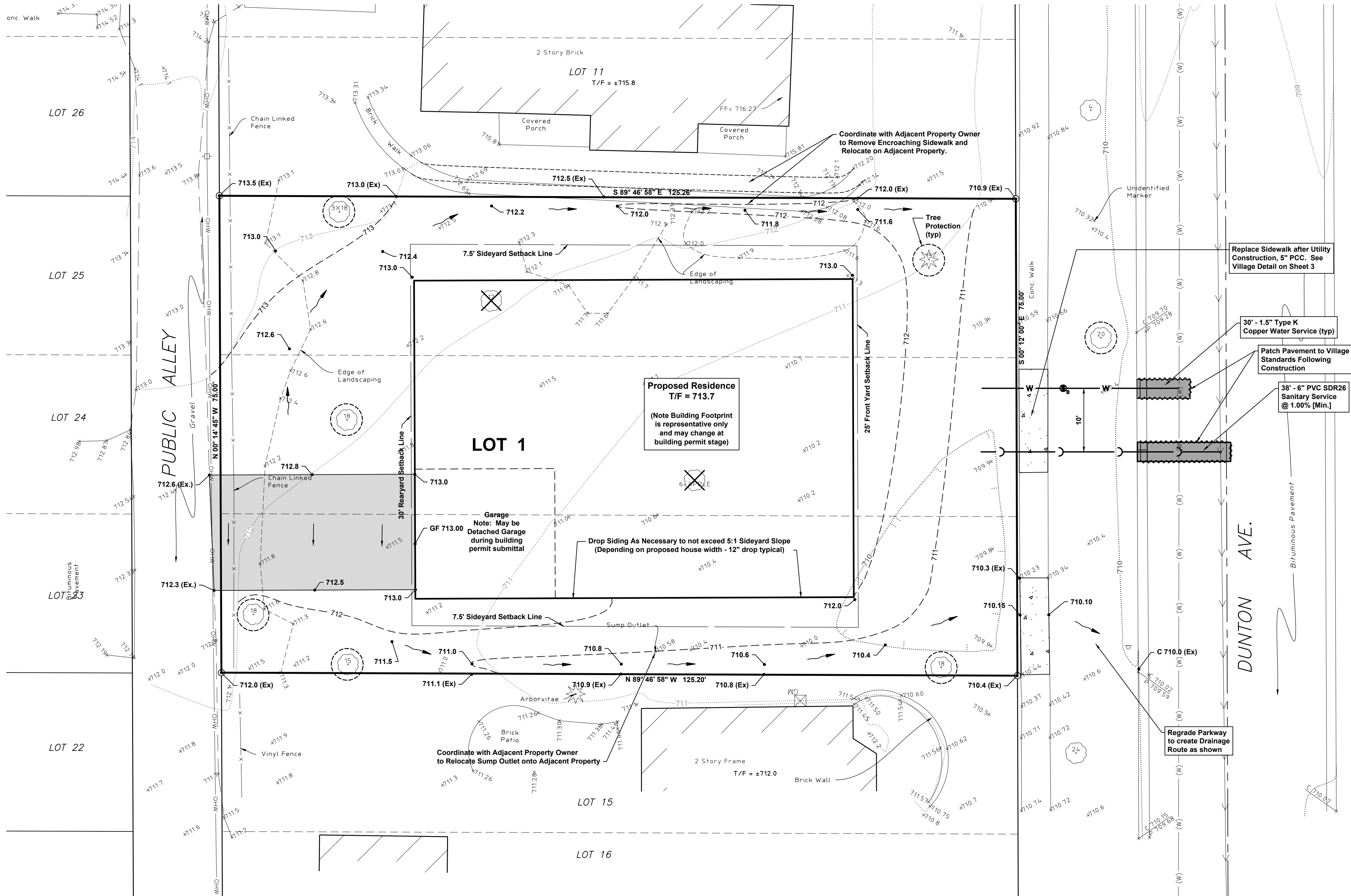
P.I.N. No. 03-29-115-020
03-29-115-021
03-29-115-022



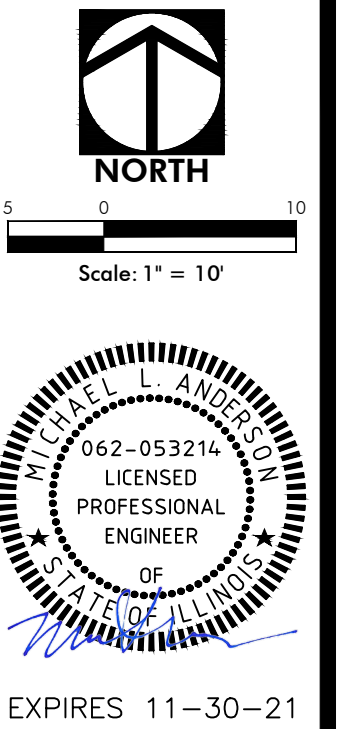
VICINITY MAP
Not To Scale

LEGAL DESCRIPTION

LOTS 12, 13, AND 14 IN BLOCK 6 IN W. H. & J. DUNTON & OTHERS SUBDIVISION OF LOTS 4, 5, AND 6 OF THE NORTHWEST QUARTER OF THE NORTHWEST QUARTER AND LOTS 1, 2, 8, AND 9 OF THE SOUTHWEST QUARTER OF THE NORTHWEST QUARTER OF SECTION 29, TOWNSHIP 42 NORTH, RANGE 11, EAST OF THE THIRD PRINCIPAL MERIDIAN, ACCORDING TO THE PLAT OF SAID SUBDIVISION RECORDED APRIL 21, 1874 AS DOCUMENT NUMBER 152778, IN COOK COUNTY, ILLINOIS.



- LEGEND
- Combined Sewer
 - Atlas Water Main
 - Light Pole
 - Fence
 - Sign
 - Gas Meter
 - Overhead Utility Line
 - Utility Pole
 - Curb & Gutter
 - Curb Elevation and Pavement Elevation
 - Pavement Elevation
 - Sidewalk Elevation
 - Ground Elevation
 - Contour Line
 - Deciduous Tree
 - Coniferous Tree
 - Record
 - On Line



Revised Gravel Location
per Village Review

01.21.2020
01.15.2020

Date

No.

HAEGER ENGINEERING
consulting engineers • land surveyors
100 East State Parkway, Schaumburg, IL 60173 • Tel: 847.394.6600 Fax: 847.394.6608
Illinois Professional Design Firm License No. 184-003152
www.haegerengineering.com

**SITE ENGINEERING PLAN
FOR LOT CONSOLIDATION**
**MASTERCRAFT BUILDERS
SUBDIVISION**
ARLINGTON HEIGHTS

Project Manager: MLA
Engineer: MLA
Date: 12.20.2019
Project No. 19-120
Sheet 1/3

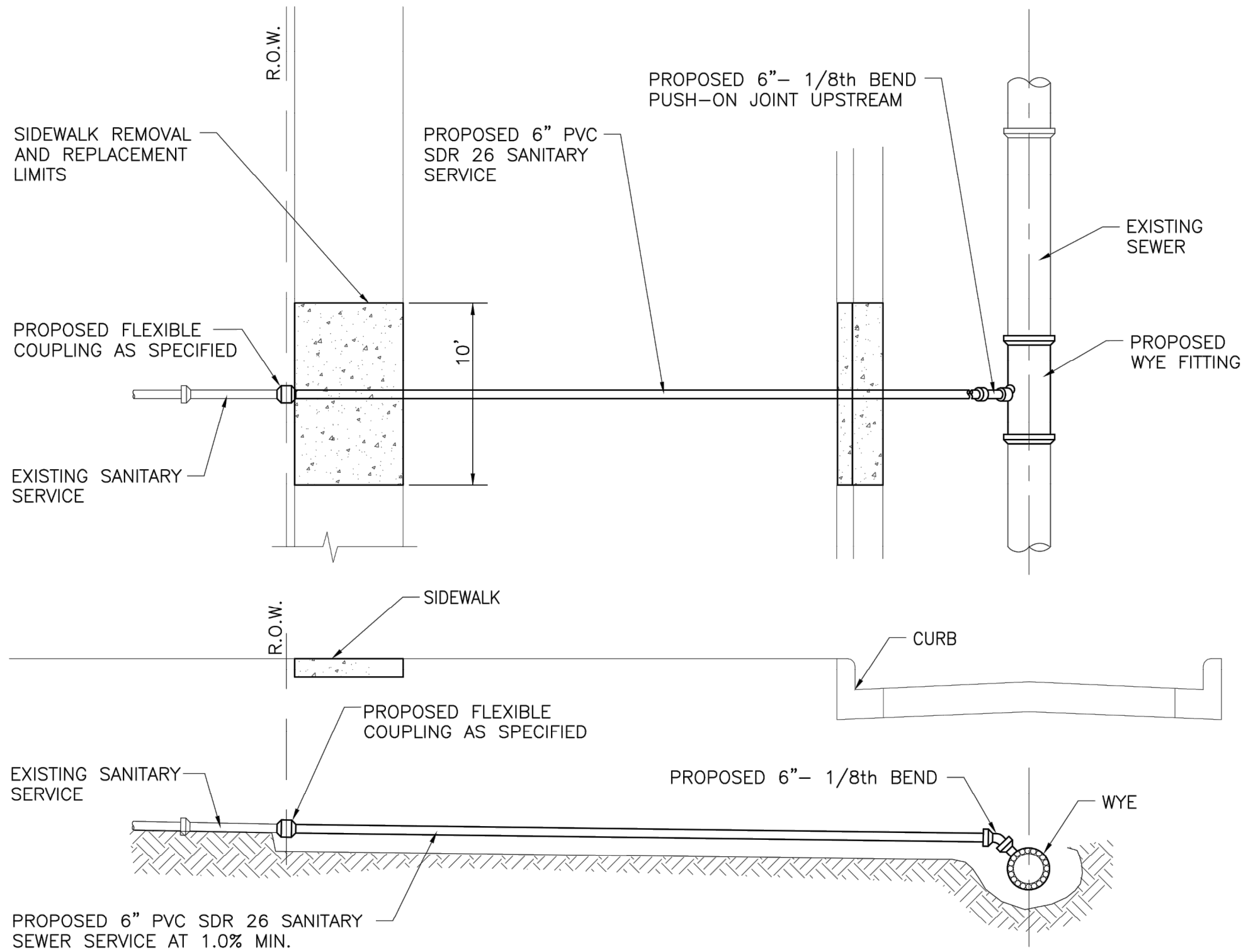
Benchmark
CP # 602 (see survey)
Description: Mag Nail
Elevation: 709.42 NAVD 88 (Geoid 12A)
CP # 600
Description: Cross Notch on Fire Hydrant Bolt
Elevation: 712.66 NAVD 88 (Geoid 12A)



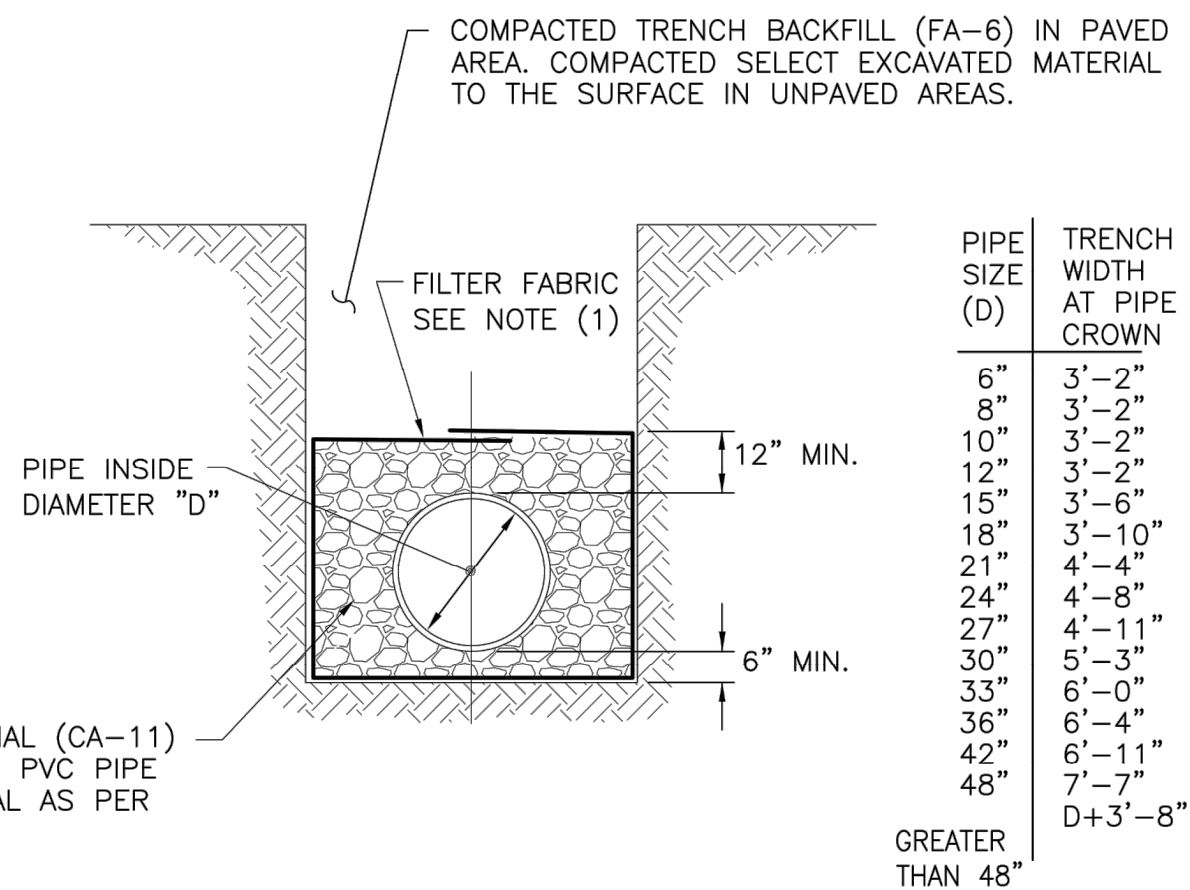
Know what's below.
Call before you dig.

Note:
Call 811 at least 48 hours,
excluding weekends and holidays,
before you dig.

Public Works Notes:
The Water Meter Unit of Public Works will install the 1.0" water meter. The cost of the water meter will be part of the install fees incurred on the permit. Water meter installations to be coordinated with Mike Giles at 847-368-5810.
All sidewalk panels are to be returned to satisfactory condition at the completion of construction. Any wells that do not pitch towards street shall be replaced during construction.

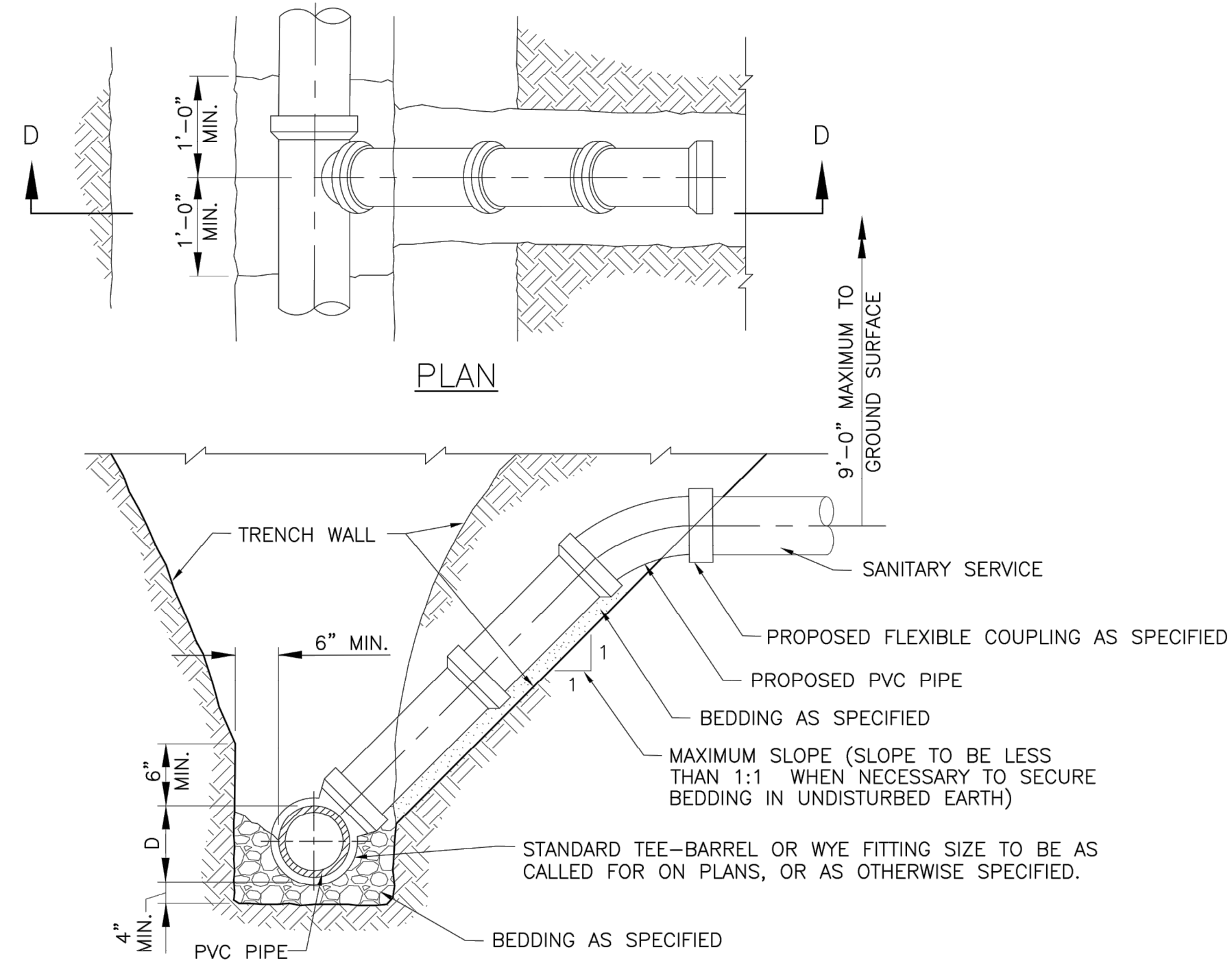


TYPICAL SANITARY SERVICE SEWER CONNECTION
(SHALLOW SEWER)



- NOTE:
1. FILTER FABRIC TO BE USED AROUND BEDDING IN TRENCHES OF DEPTH GREATER THAN 12 FEET, AND AT OTHER LOCATIONS AS DIRECTED BY ENGINEER.
 2. FILTER FABRIC TO BE USED WHERE NATIVE SOIL IS SAND OR WET CLAYS.
 3. MAXIMUM TRENCH WIDTH (SHEETING OR TRENCH BOX USED) (MAX. PAY WIDTH FOR TBF)

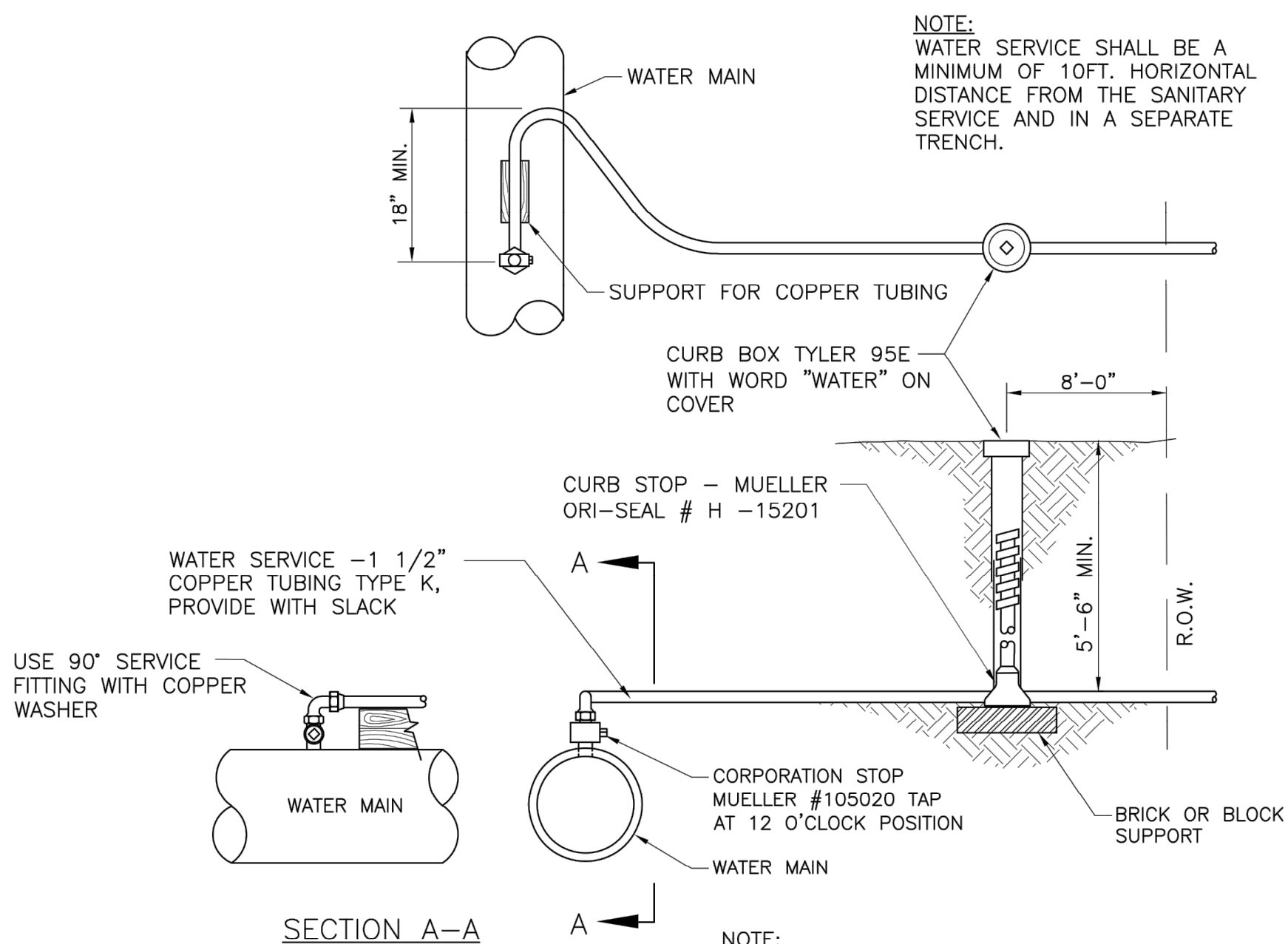
TYPICAL TRENCH DETAIL FOR SANITARY SEWER



- NOTE:
- RISERS TO BE CONSTRUCTED WITH WYES AND TEES. FOR PIPE MATERIAL AND CONCRETE, SEE SPECIFICATIONS.

SECTION D-D

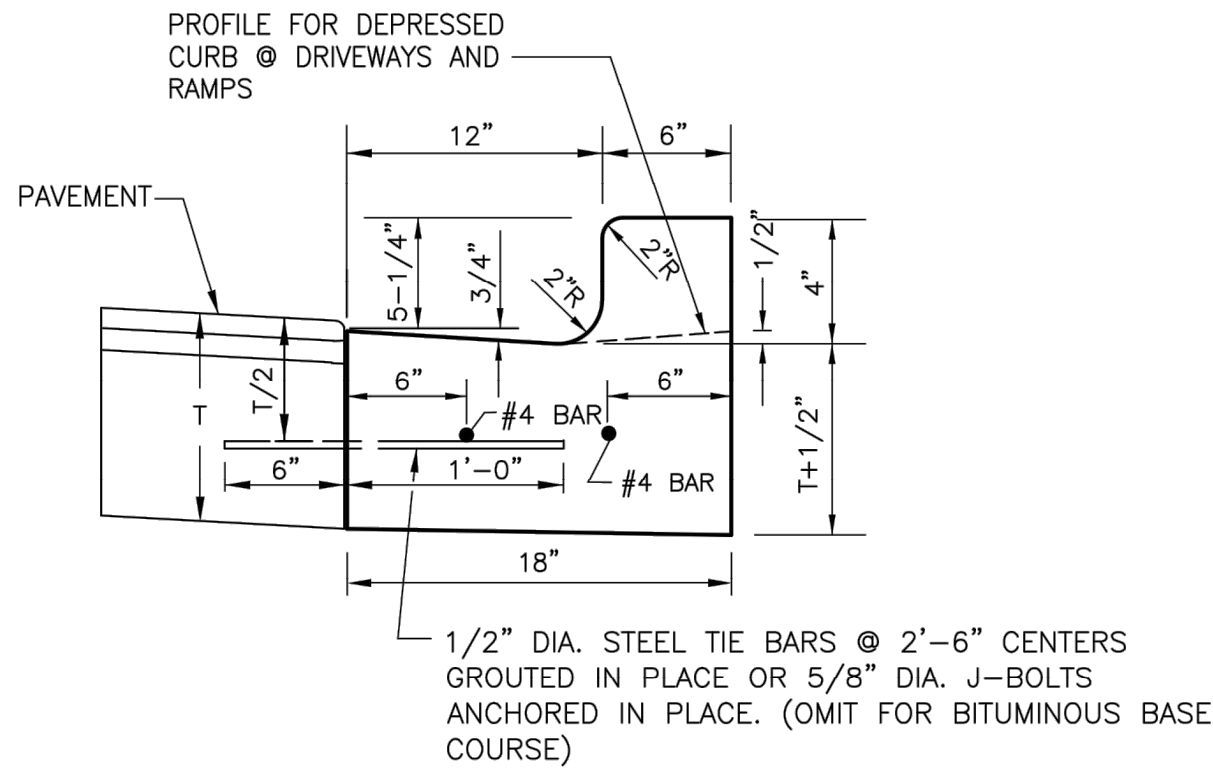
TYPICAL RISER FOR SERVICE LATERAL



SECTION A-A

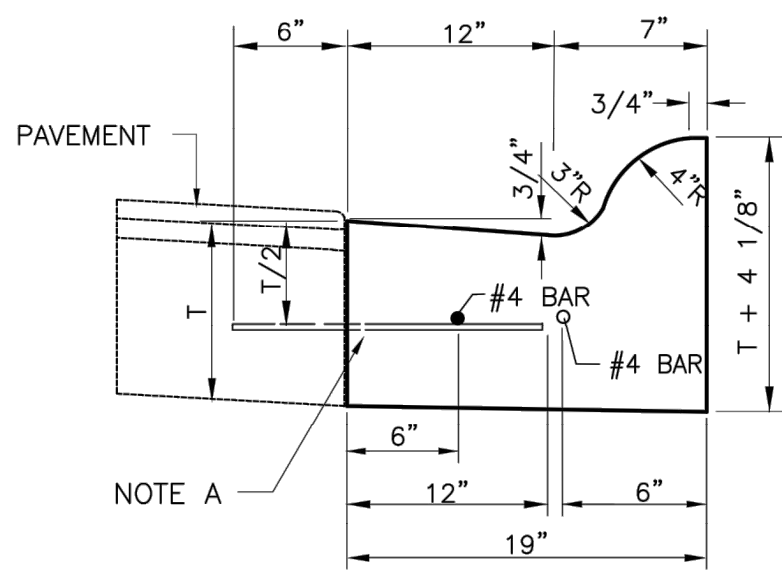
TYPICAL 1 1/2" DOMESTIC WATER SERVICE

FILE NAME =	USER NAME = chomuth	DESIGNED - BS	REVISED -	VILLAGE OF ARLINGTON HEIGHTS	DETAIL SHEET					TOTAL SHEETS	SHEET NO.
VAH-Eng-Res-Details.dwg	LAYOUT NAME = DETAIL 1	DRAWN - CH	REVISED -								
	PLOT SCALE = 20.00' / IN.	CHECKED - JM	REVISED -								
	PLOT DATE = Jul 15, 2016-7:57am	DATE - 03/11/2016	REVISED -								

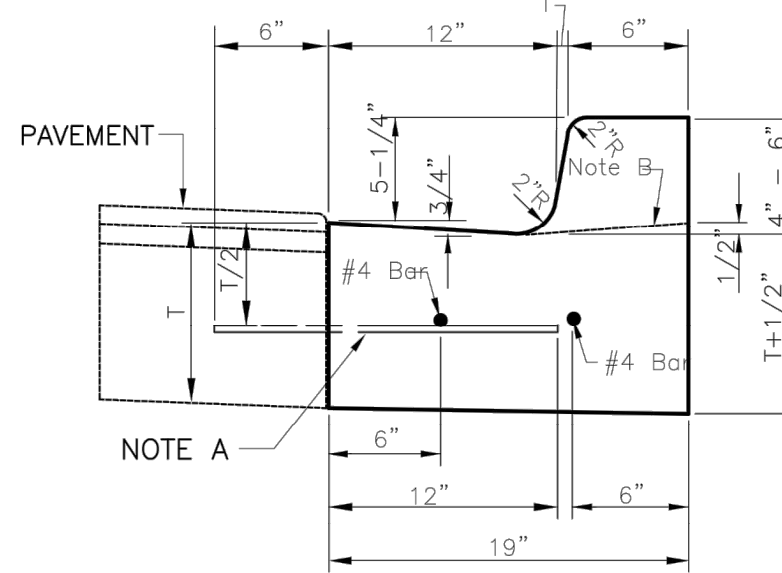


- NOTES:
1. 2-#4 LONGITUDINAL BARS 20 FEET IN LENGTH WITH 12" OVERLAPS, AT 60' INTERVALS, EXCEPT AT EXPANSION JOINTS.
 2. EXPANSION JOINTS SHALL BE A MINIMUM OF 3/4" PREFORMED EXPANSION MATERIAL AND SHALL BE PROVIDED WITH A 1" DIA. X 18" COATED SMOOTH DOWEL BAR FITTED WITH A CAP THAT WILL ALLOW A MINIMUM OF 1" OF EXPANSION.
 3. CONSTRUCTION JOINTS SHALL BE TEMPLATE FORMED OR SAW-CUT (WITHIN 24 HOURS OF PLACEMENT OF THE CURB) TO 1/5TH THE DEPTH OF THE GUTTER FLAG AT 20FT. INTERVALS OR AT THE JOINTS DEPTH OF THE GUTTER FLAG AT 20FT. INTERVALS OR AT THE JOINTS IN AN ADJACENT CONCRETE PAVEMENT.

B-4.12 CURB AND GUTTER



ROLL TYPE CURB



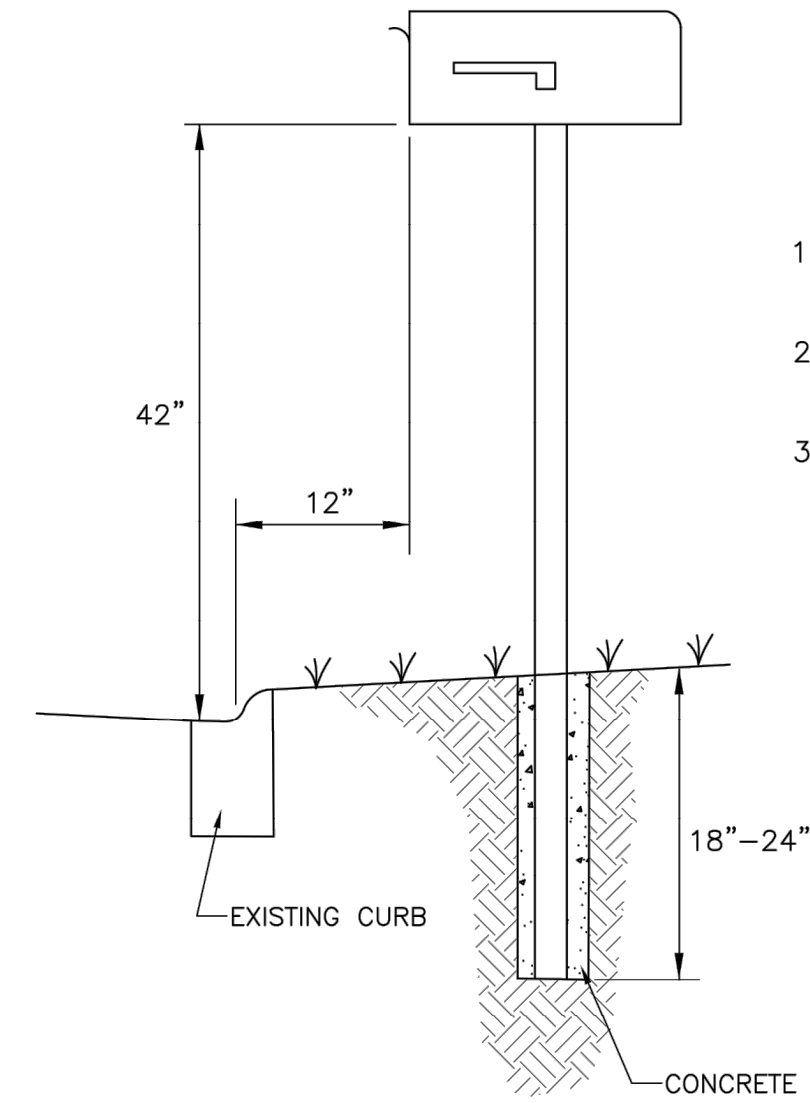
BARRIER TYPE CURB

- NOTES:
1. 2-#4 LONGITUDINAL BARS 20 FEET IN LENGTH WITH 12" OVERLAPS, AT 60' INTERVALS, EXCEPT AT EXPANSION JOINTS.
 2. EXPANSION JOINTS SHALL BE A MINIMUM OF 3/4" PREFORMED EXPANSION MATERIAL AND SHALL BE PROVIDED WITH A 1" DIA. X 18" COATED SMOOTH DOWEL BAR FITTED WITH A CAP THAT WILL ALLOW A MINIMUM OF 1" OF EXPANSION.
 3. CONSTRUCTION JOINTS SHALL BE TEMPLATE FORMED OR SAW-CUT (WITHIN 24 HOURS OF PLACEMENT OF THE CURB) TO 1/5TH THE DEPTH OF THE GUTTER FLAG AT 20FT. INTERVALS OR AT THE JOINTS DEPTH OF THE GUTTER FLAG AT 20FT. INTERVALS OR AT THE JOINTS IN AN ADJACENT CONCRETE PAVEMENT.

NOTE "A"
1/2" DIA. STEEL TIE BARS @ 2'-6" CENTERS GROUTED IN PLACE OR 5/8" DIA. J-BOLTS ANCHORED IN PLACE. (OMIT FOR BITUMINOUS BASE COURSE)

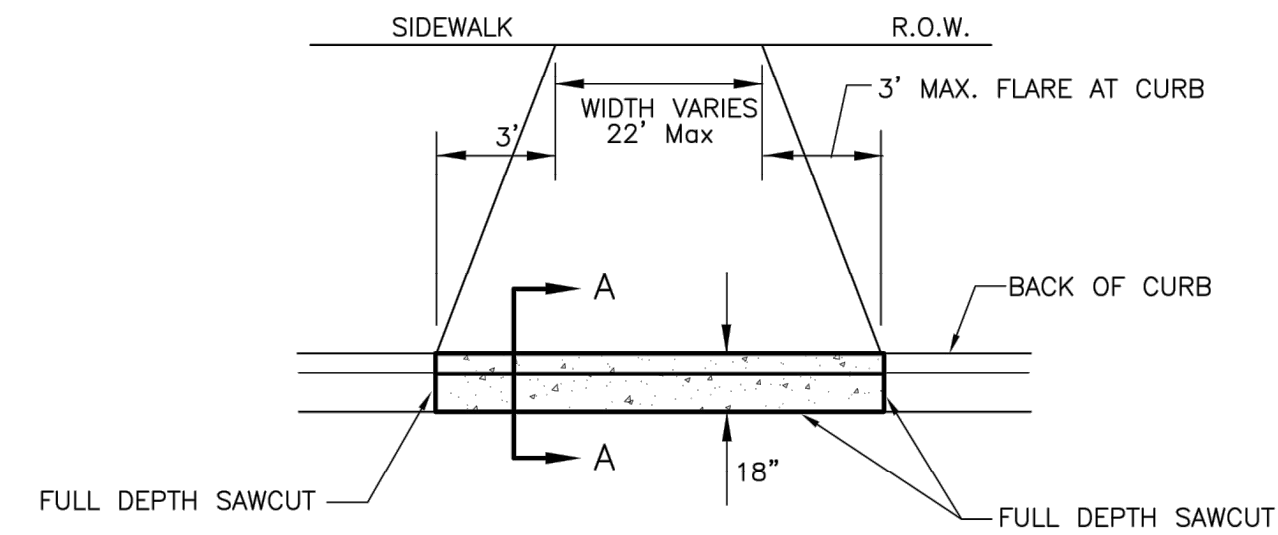
NOTE "B"
PROFILE FOR DEPRESSED CURB @ DRIVEWAYS AND RAMP

REMOVAL AND REPLACEMENT REQUIREMENTS FOR CONCRETE CURB & GUTTER

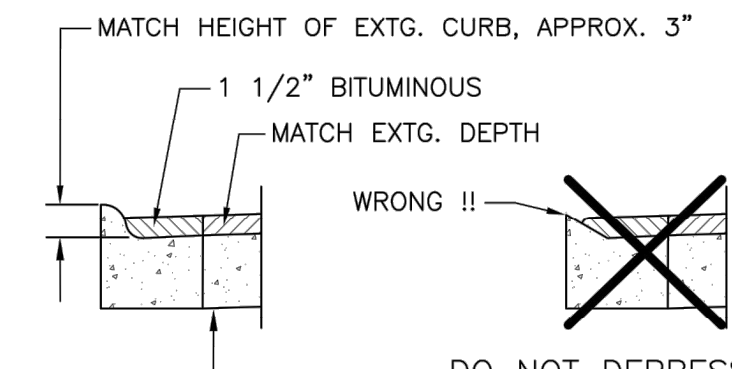


1. MAIL BOXES MUST BE MOUNTED SO THAT THE FRONT OF THE BOX IS 12" BEHIND THE FACE OF CURB.
2. THE HEIGHT OF THE MAIL BOX MUST 42" FROM THE TOP OF THE STREET TO THE BOTTOM OF THE MAIL BOX.
3. ALL MATERIAL USED TO SUPPORT MAIL BOXES MUST BE SET IN CONCRETE 18"-24" DEEP.

MAIL BOX DETAIL

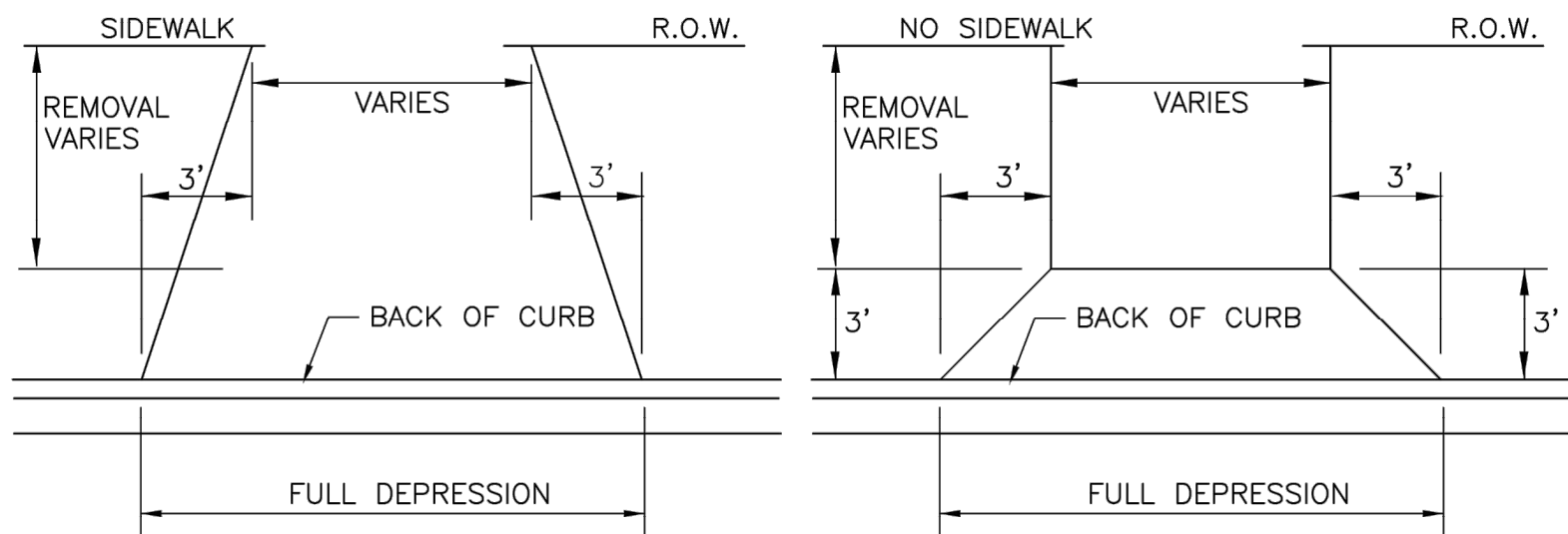


SECTION A-A



REQUIREMENTS FOR REPLACING MONOLITHIC CURB

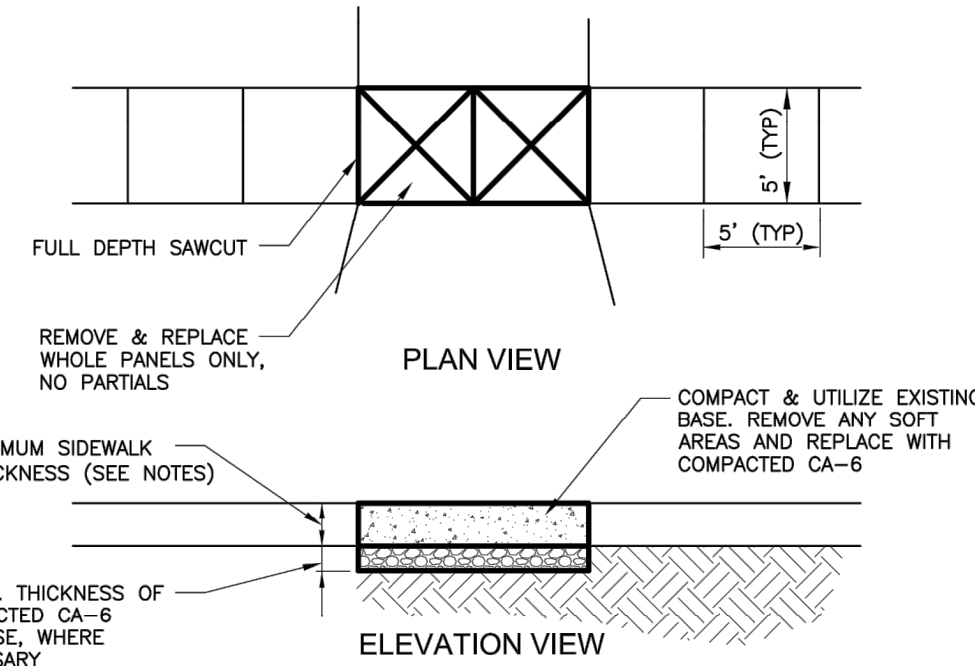
- NOTES:
- FULL DEPTH SAWCUT AT LIMITS OF CURB REMOVAL AND 18" FROM BACK OF CURB.
- 5/8" J-BOLTS DRILLED AND ANCHORED INTO EXISTING CONCRETE BASE EVERY 30".
- DEPTH OF NEW CURB TO MATCH EXISTING CONCRETE PAVEMENT THICKNESS.
- FORM A FULL ROLL CURB THROUGH THE DRIVEWAY APPROX. 3" FROM THE FLOW LINE TO THE TOP OF CURB. ONCE THE ASPHALT IS REPLACED, THE "BUMP" WILL BE ONLY AN INCH OR SO, AND ANY DRAINAGE PROBLEMS WILL BE MINIMIZED.



- NOTES: MAX 3' FLARE AT DRIVEWAY MATERIALS VARY CONCRETE OR ASPHALT MAX. REMOVAL TO R.O.W.

DRIVEWAY REPLACEMENT

	DRIVE THICKNESS	STONE THICKNESS
CONC. DW.	6"	2" (MIN)
ASPH. DW.	2 1/2"	6"



- NOTES:
- 5" - SIDEWALK NOT THROUGH DRIVEWAY
- 6" - SIDEWALK TROUGH A SINGLE FAMILY RESIDENTIAL DRIVEWAY
- 8" - SIDEWALK THROUGH ALL OTHER DRIVEWAYS

REMOVAL AND REPLACEMENT REQUIREMENTS FOR CONCRETE SIDEWALK

T:\Standard Drawings\Details

FILE NAME =	USER NAME = chomuth	DESIGNED - BS	REVISED -
VMT-Eng-Res-Details.dwg	LAYOUT NAME = DETAIL 2	DRAWN - CH	REVISED -
	PLOT SCALE = 20.00' / IN.	CHECKED - JM	REVISED -
	PLOT DATE = Jul 15, 2016-7:49am	DATE - 03/11/2016	REVISED -

VILLAGE OF ARLINGTON HEIGHTS

DETAIL SHEET

TOTAL SHEETS

SHEET NO.