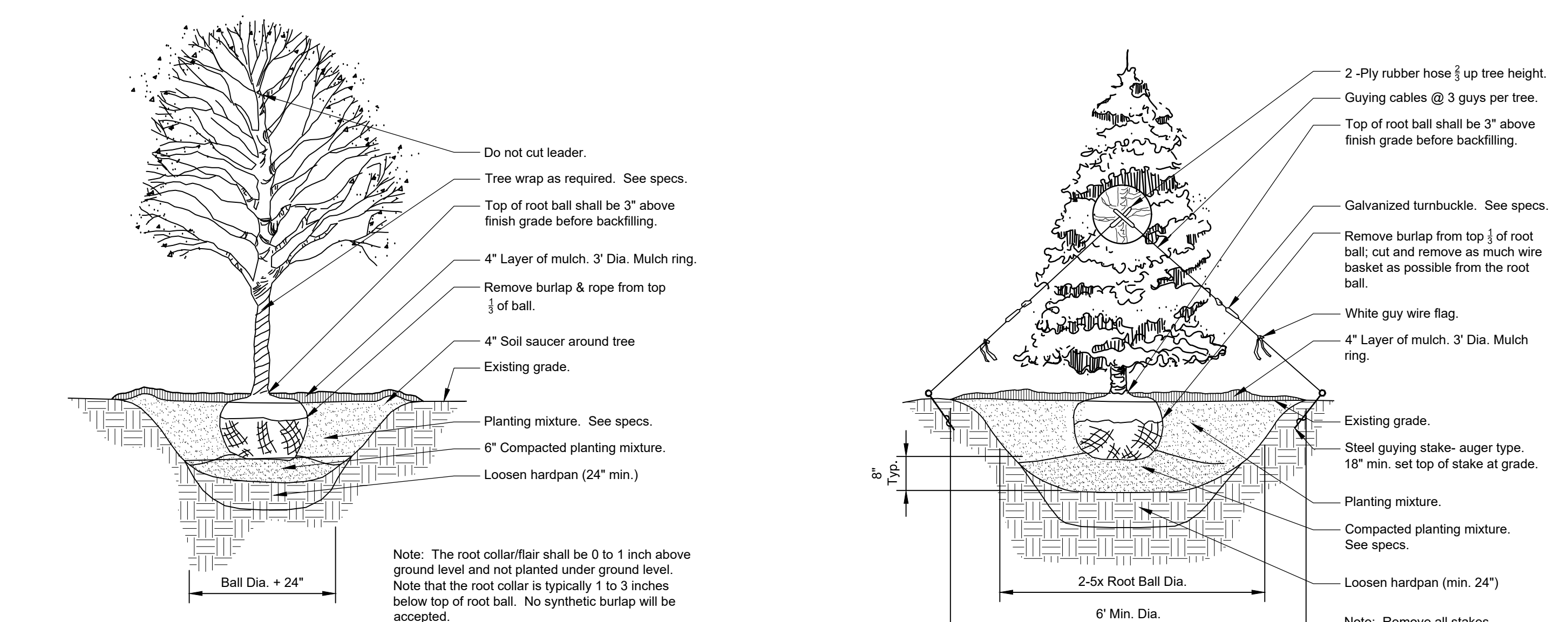
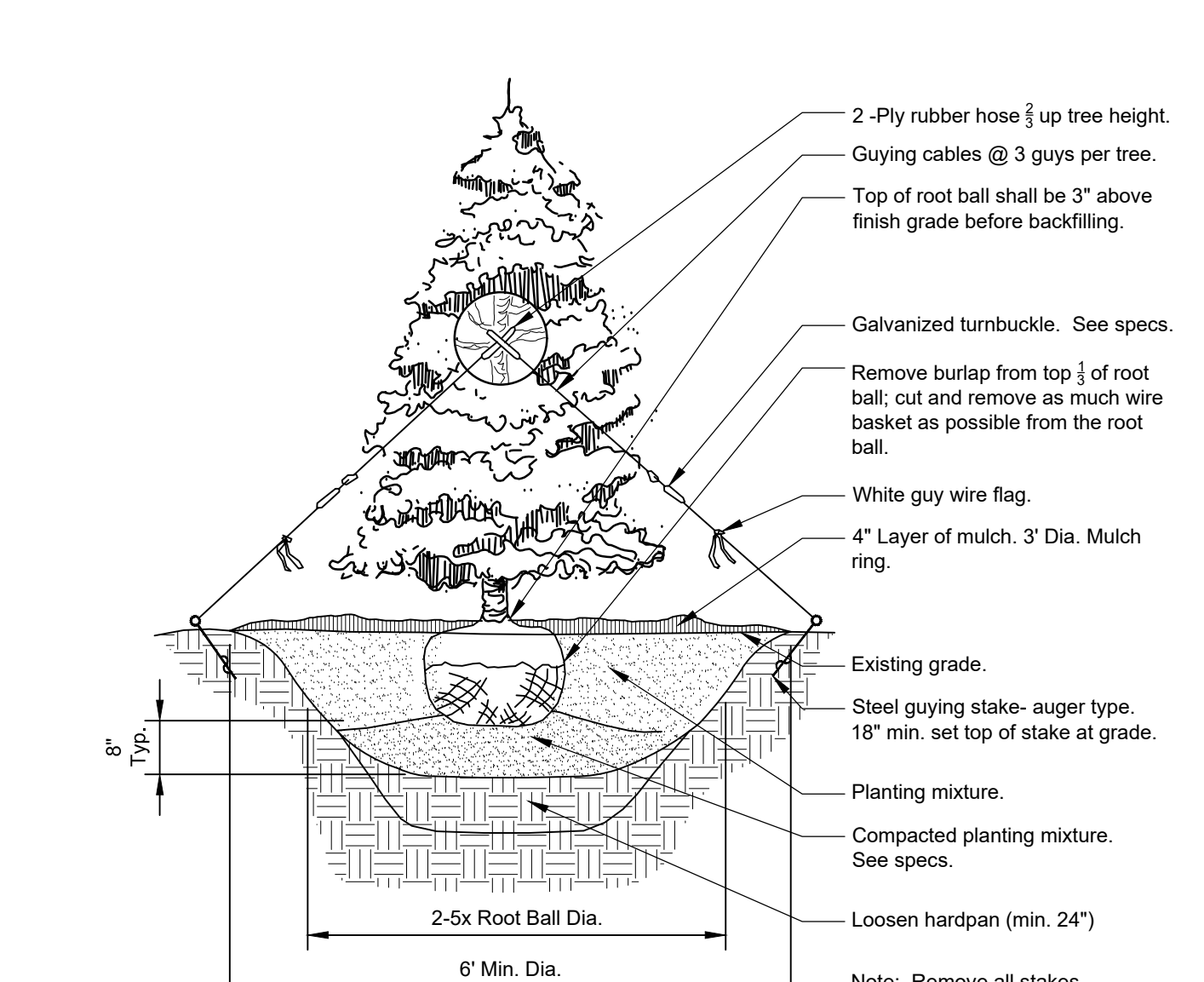


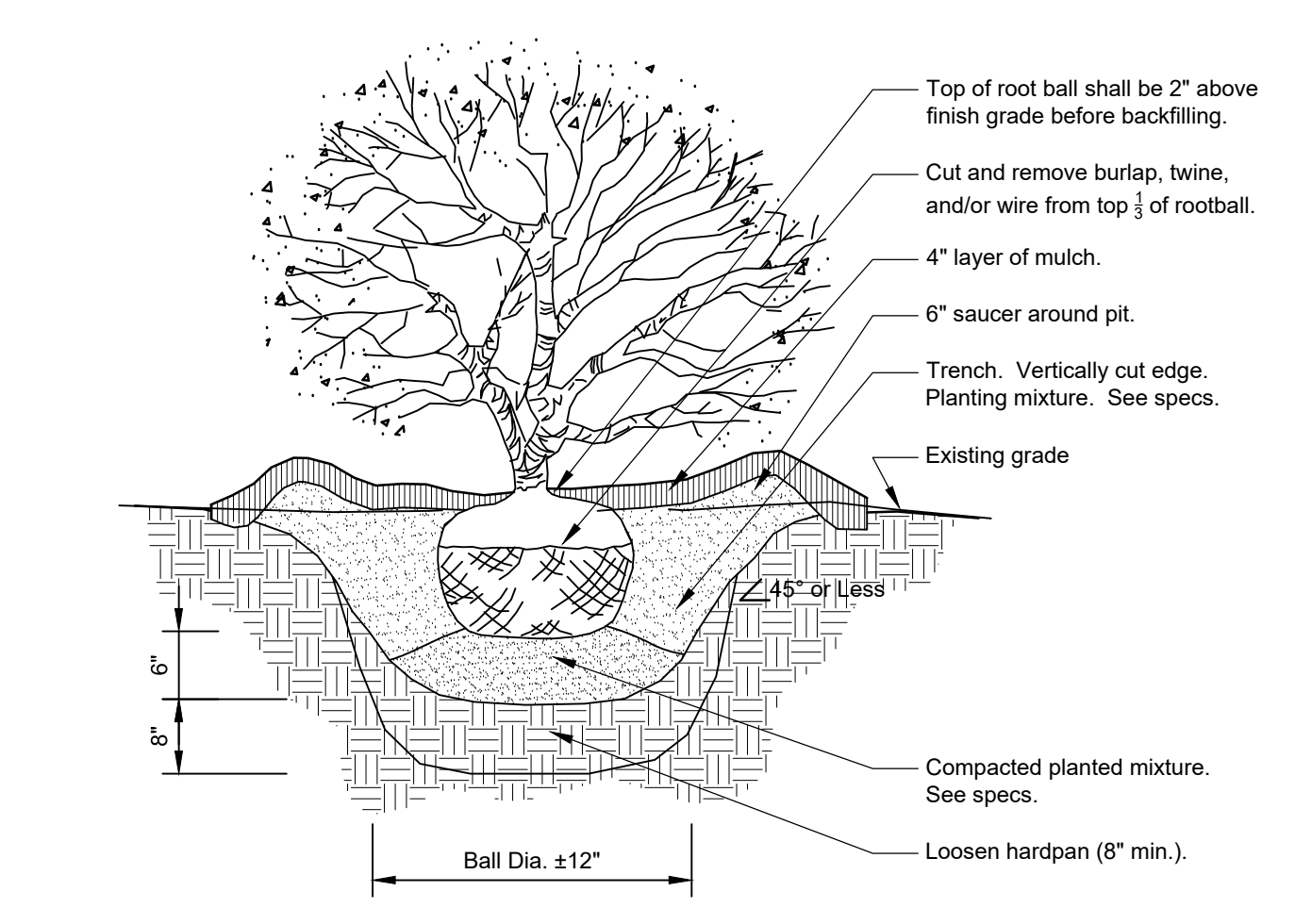
\\ms-a-usa-proj\proj-32-9343\10\wgl\landscap\Final Drawings\Plan Set\1-L-FINAL LANDSCAPE PLAN.dwg
© 2019 The Cannon Corporation
All rights reserved. No part of this document may be reproduced, stored in a retrieval system, or written authorization by The Cannon Corporation.
9/19/2019 11:51:35 AM



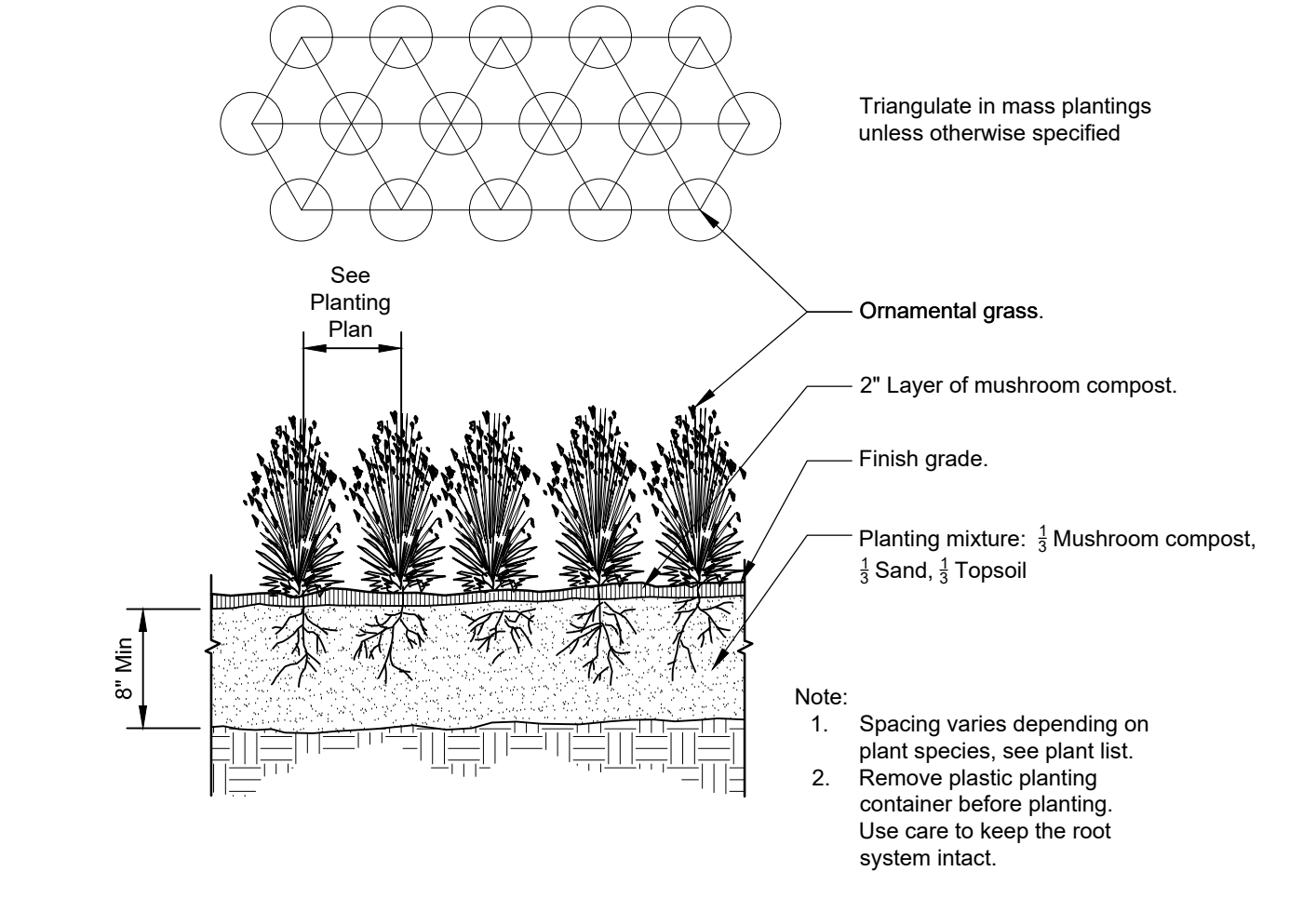
1 DECIDUOUS TREE PLANTING
1/4" = 1'-0" 32 9343.33-20



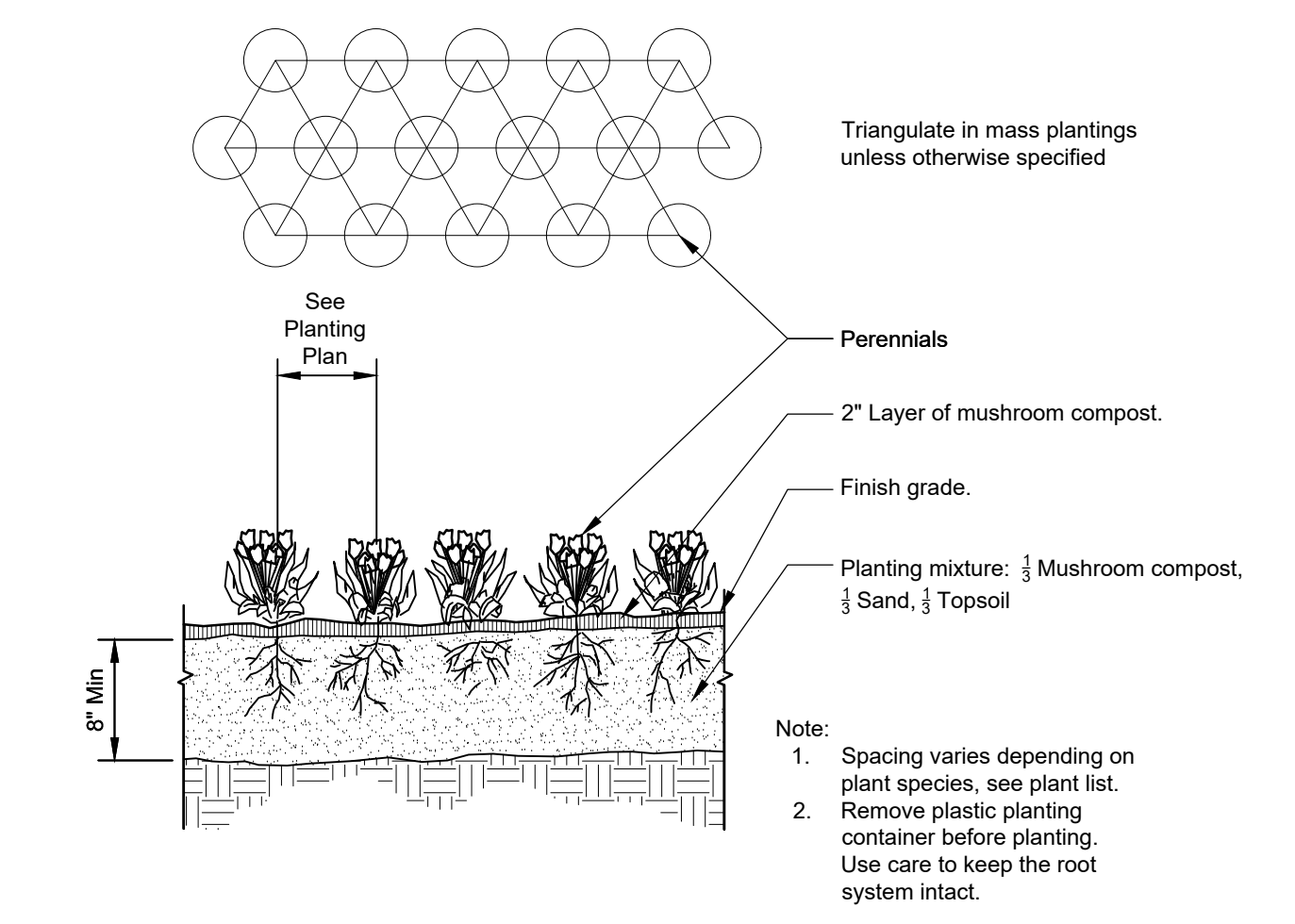
2 CONIFER TREE PLANTING
1/4" = 1'-0" 32 9343.46-01



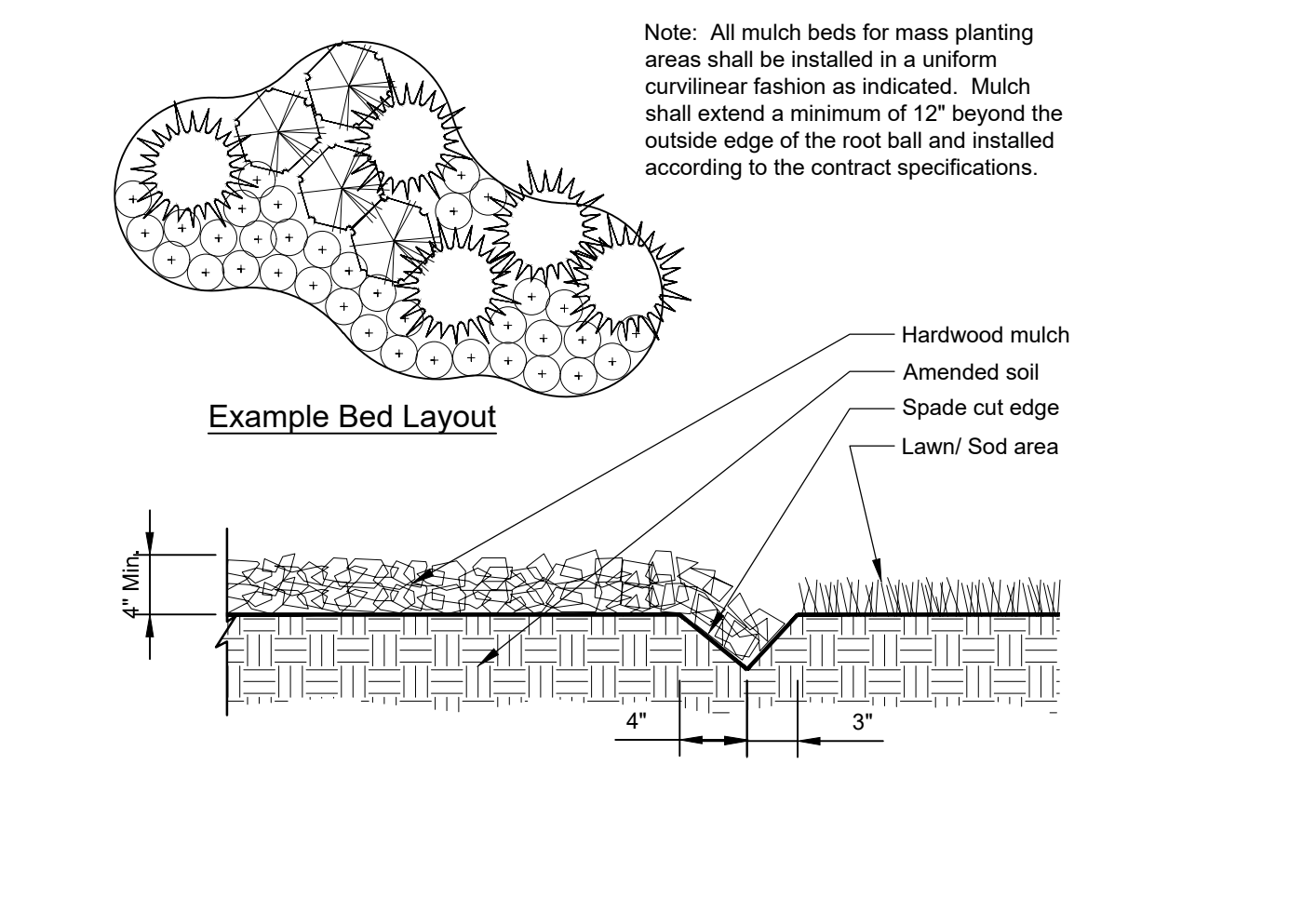
3 SHRUB PLANTING DETAIL
3/4" = 1'-0" 32 9333.16-05



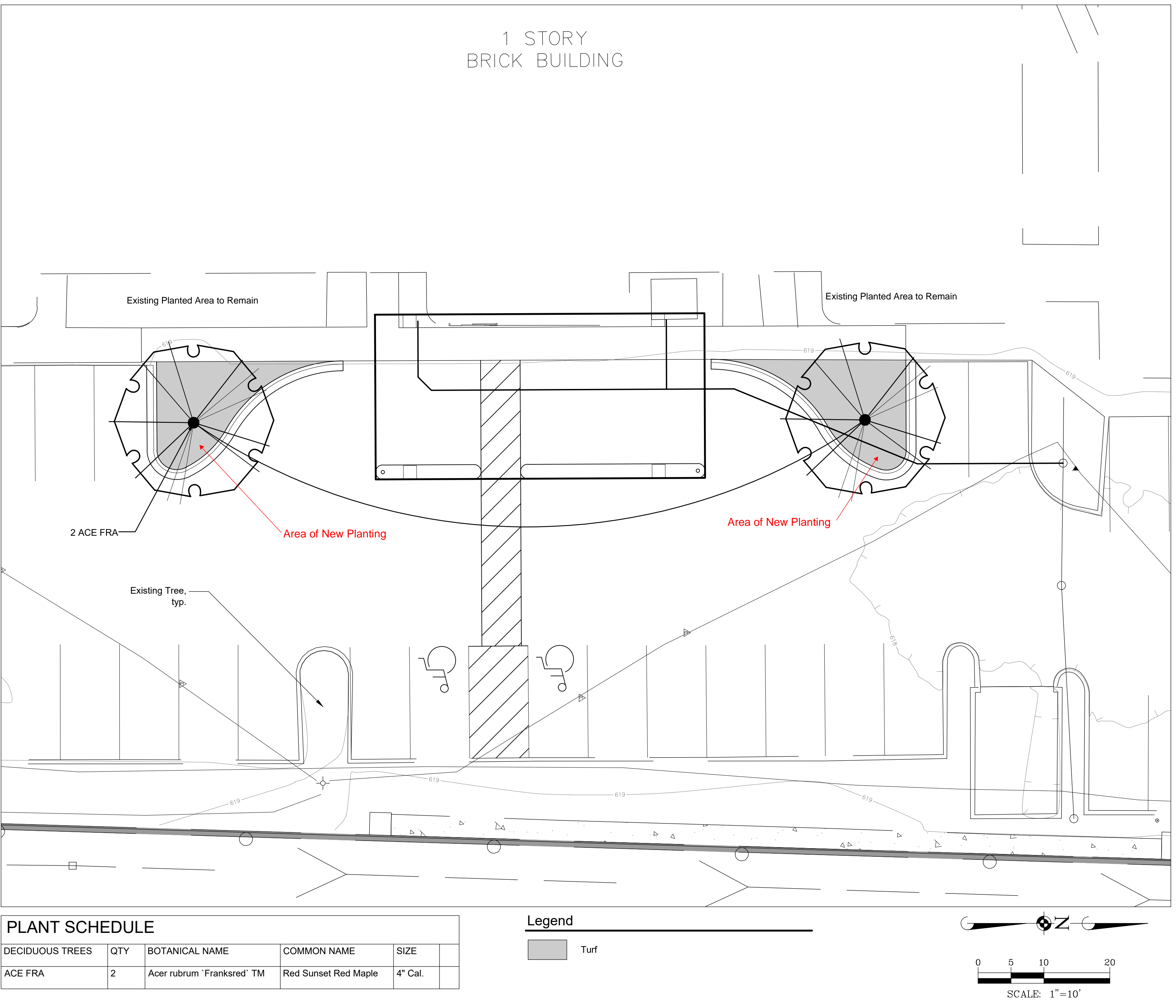
4 ORNAMENTAL GRASS PLANTING
1" = 1'-0" 32 9313-01



5 PERENNIAL / ANNUAL PLANTING
1" = 1'-0" 32 9313-02

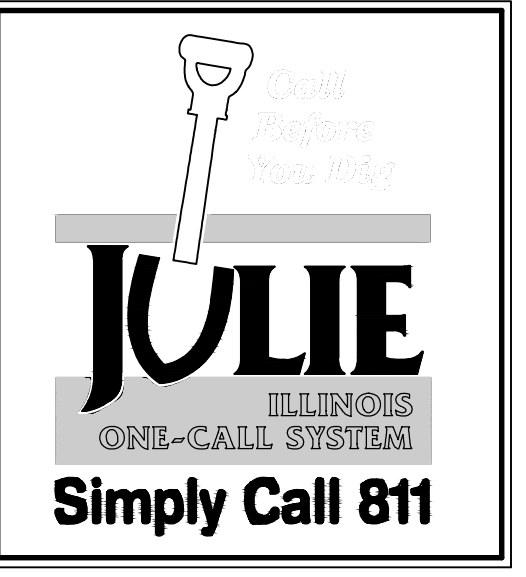


6 CONTINUOUS MULCH EDGING
1" = 1'-0" 32 9113.26-01



Landscape Notes:

- Seed/ Sod limit line is approximate. Seed/ Sod to limits of grading and disturbance. Contractor responsible for restoration of any unauthorized disruption outside of designated construction area.
- Contractor responsible for erosion control in all seeded/ sodded areas.
- Tree mulch rings in turf areas are 5' diameter. Contractor shall provide a mulch ring around all existing trees within the limits of work. Remove all existing grass from area to be mulched and provide a typical spade cut edge. Landscape Fabric shall not be installed under mulch.
- Bedlines are to be spade cut to a minimum depth of 3". Curved bedlines are to be smooth and not segmented.
- All planting, beds shall receive top dressing of mulch. Landscape fabric shall not be installed under mulch.
- Do not locate plants within 10' of utility structures or within 5' horizontally of underground utility lines unless otherwise shown on plans. Consult with Landscape Architect if these conditions exist.
- For Lump Sum Contracts, plants and other materials are quantified and summarized for the convenience of the Owner and jurisdictional agencies only. Confirm and install sufficient quantities to complete the work as drawn and specified. No additional payments will be made for materials required to complete the work as drawn and specified.
- For Unit Price Contracts, payments will be made based on actual quantities installed as measured in place by the Owner's Representative.
- It is the responsibility of the contractor to locate and provide plant material as specified on this plan. The contractor may submit a request to provide substitutions for the specified plant material under the following conditions:
 - Any substitutions proposed shall be submitted to the project owner's representative within two weeks of the award of contract. Substitutions must meet equivalent design and functional goals of the original materials as determined by the owner's representative. Any changes must have the approval of the owner's representative.
 - The request will be accompanied by at least three notices from plant material suppliers that the plant material specified is not available and will not be available prior to construction.
- Verify site conditions and information on drawings. Promptly report any concealed conditions, mistakes, discrepancies or deviations from the information shown in the Contract Documents. The Owner is not responsible for unauthorized changes or extra work required to correct unreported discrepancies. Commencement of work shall constitute acceptance of conditions and responsibility for corrections.
- A minimum of two working days before performing any digging, call underground service alert for information on the location of natural gas lines, electric cables, telephone cables, etc. The contractor shall be responsible for location and protection of all utilities, and repair of any damage resulting from his work at no additional cost to the owner.
- Contractor shall promptly repair all damages to existing site at no cost to owner.
- Refer to landscape specifications for additional conditions, standards, and notes.



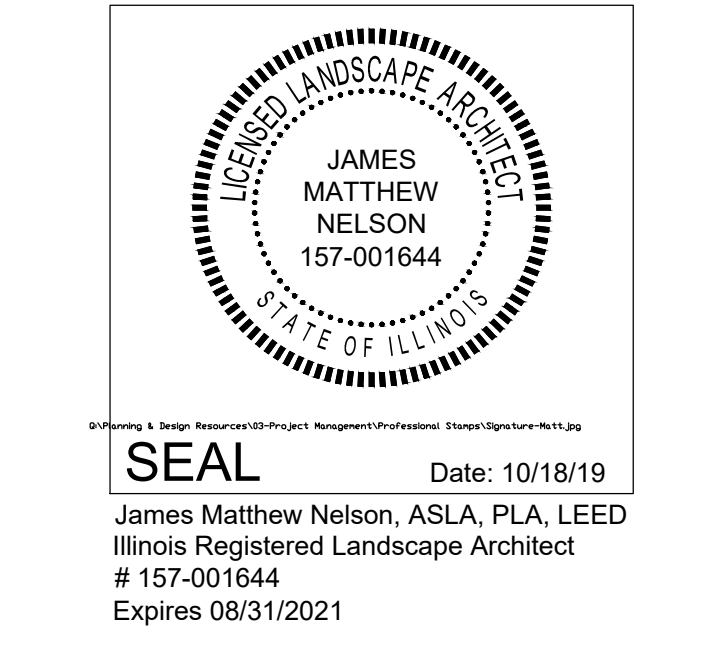
ARLINGTON HEIGHTS
DAY REHAB TENANT
IMPROVEMENTS

CANNONDESIGN

225 N. Michigan Ave Suite 1100
Chicago, IL 60601
P: 312.332.9600
F: 312.332.9601

www.cannondesign.com

Manhard Consulting
Civil Engineer
700 Springer Drive
Lombard, IL 60148
630.691.8500



CURTIS P. DETTMANN
062-066060

Tenant Fill-Out Bidding & Permit 08 NOV 2019
Rev. Description Date

Drawing Title:

FINAL LANDSCAPE PLAN

Project No.: 005934.05 Checked by: JH

L0101