

Signature _____

Typed or Printed Name _____

License # _____ Date _____



emanuelson-podas
consulting engineers

Emanuelson-Podas, Inc.
7705 Bush Lake Road
Edina, MN 55439

952.930.0050 | www.epinc.com

**NOT FOR
CONSTRUCTION**

**PLAN
COMMISSION +
DESIGN REVIEW
APPLICATION
10/28/2020**

ORIGINAL ISSUE: 10/28/2020

REVISIONS:	No.	Description	Date
	1	VILLAGE RESUBMIT	11/04
	2	VILLAGE RESUBMIT	11/19

4425.0000
PROJECT NUMBER

BWJ JJA
DRAWN BY CHECKED BY

KEY PLAN

Arlington Heights Senior

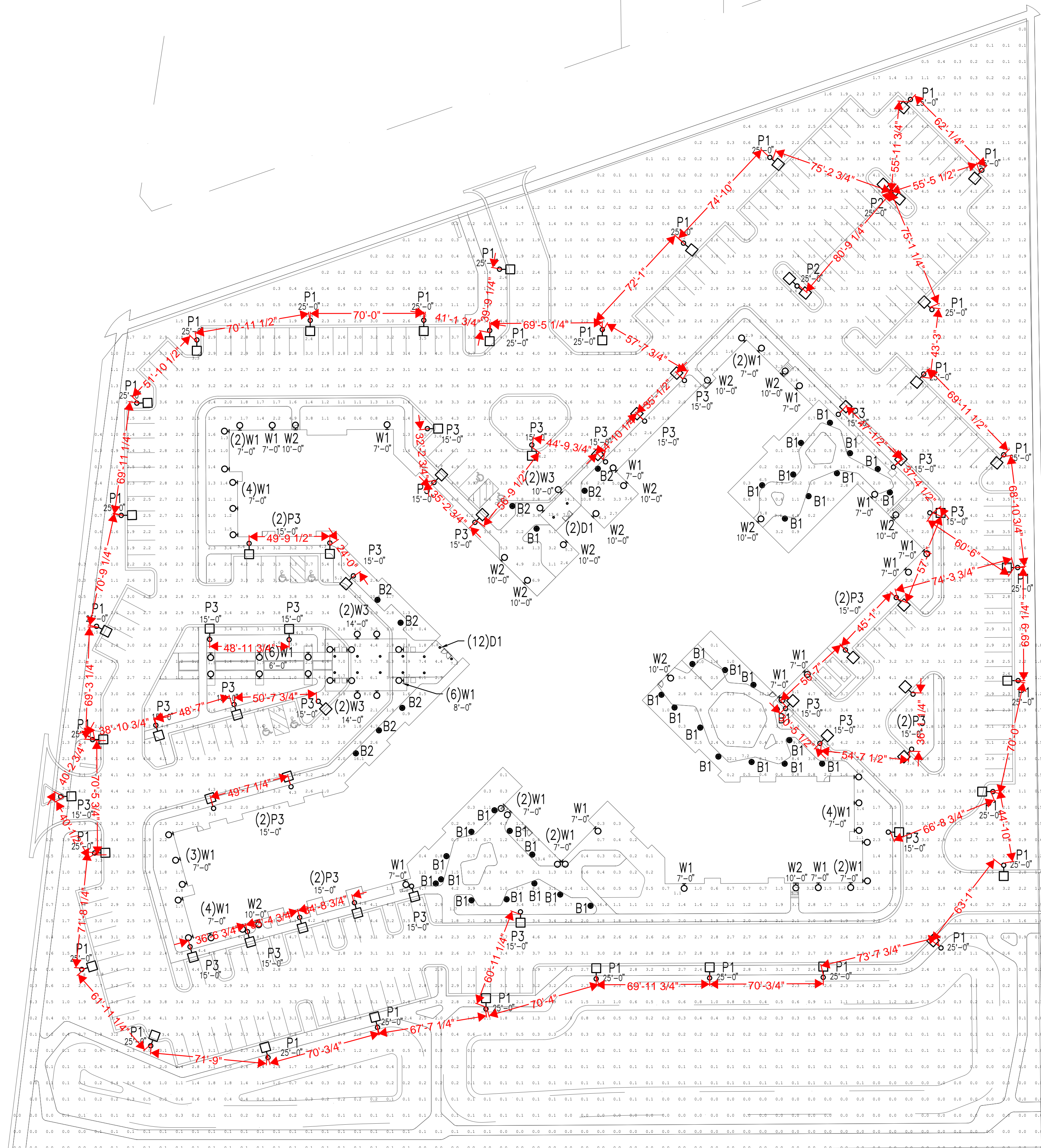
PHOTOMETRIC SITE PLAN

E0.2

GENERAL NOTES

- A. REFER TO SHEETS E0.3, E0.4, & E0.5 FOR FIXTURE SCHEDULE AND CUTSHEETS.
- B. LIGHTING LEVELS SHOWN ARE MAINTAINED. LIGHT LOSS FACTOR OF 0.90 WAS USED TO ACCOUNT FOR DIRT AND LUMEN DEPRECIATION.
- C. MOUNTING HEIGHTS SHOWN ARE TO TOP OF FIXTURE.
- D. REFER TO DETAIL 1/E0.3 FOR FIXTURE TYPE B1 AND B2 BASE REQUIREMENTS.
- E. REFER TO DETAIL 2/E0.3 FOR FIXTURE TYPE P1 AND P2 POLE AND BASE REQUIREMENTS.
- F. REFER TO DETAIL 3/E0.3 FOR FIXTURE TYPE P3 POLE AND BASE REQUIREMENTS.

Calculation Summary							
Label	CalcType	Units	Avg	Max	Min	Avg/Min	Max/Min
Property Line East	Illuminance	Fc	0.64	2.0	0.0	N.A.	N.A.
Property Line North	Illuminance	Fc	0.53	1.8	0.0	N.A.	N.A.
Property Line South	Illuminance	Fc	0.03	0.1	0.0	N.A.	N.A.
Property Line West	Illuminance	Fc	0.57	1.8	0.0	N.A.	N.A.
Site	Illuminance	Fc	2.21	20.2	0.0	N.A.	N.A.

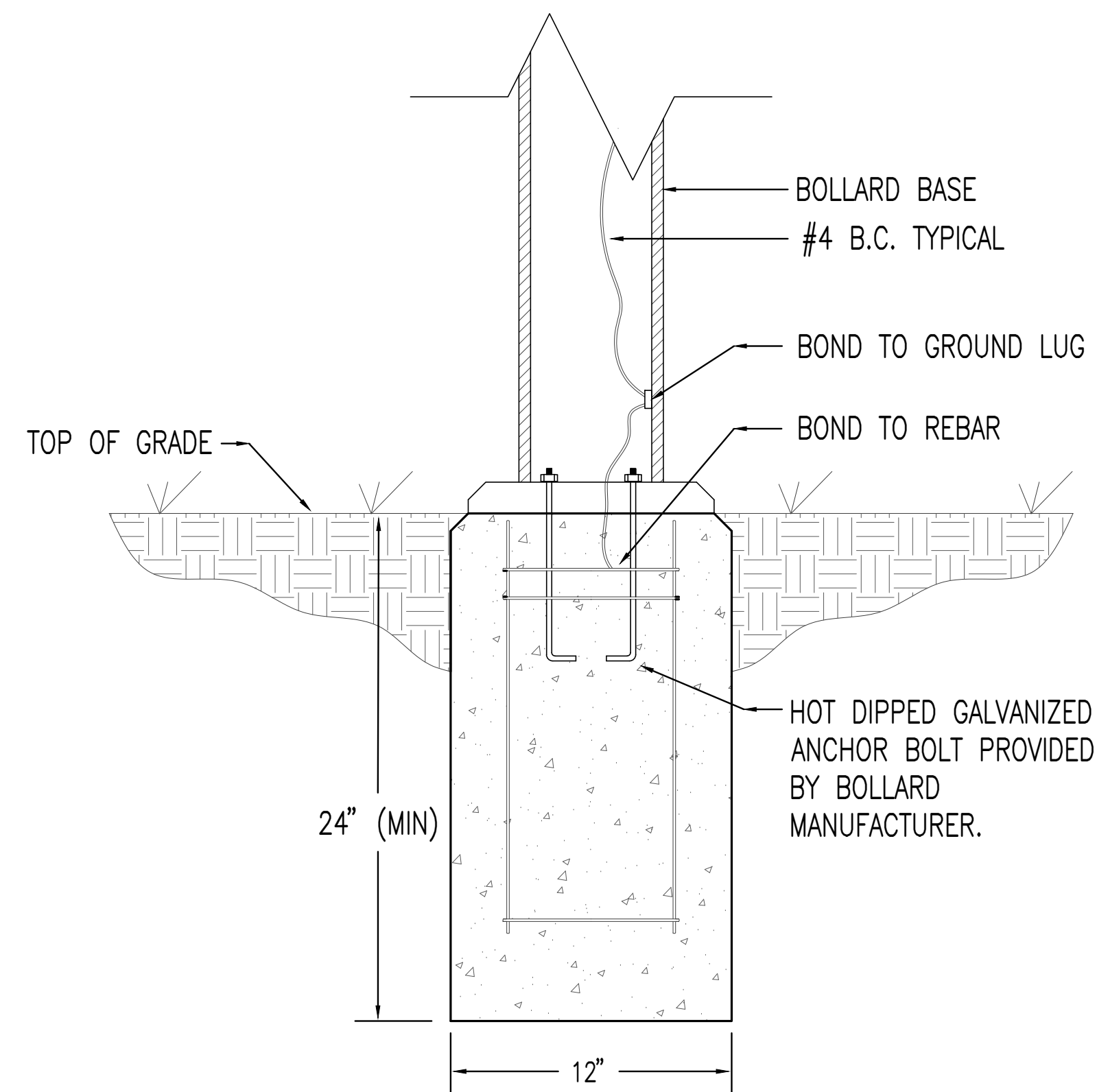


1 PHOTOMETRIC SITE PLAN
SCALE: 1" = 40'-0"



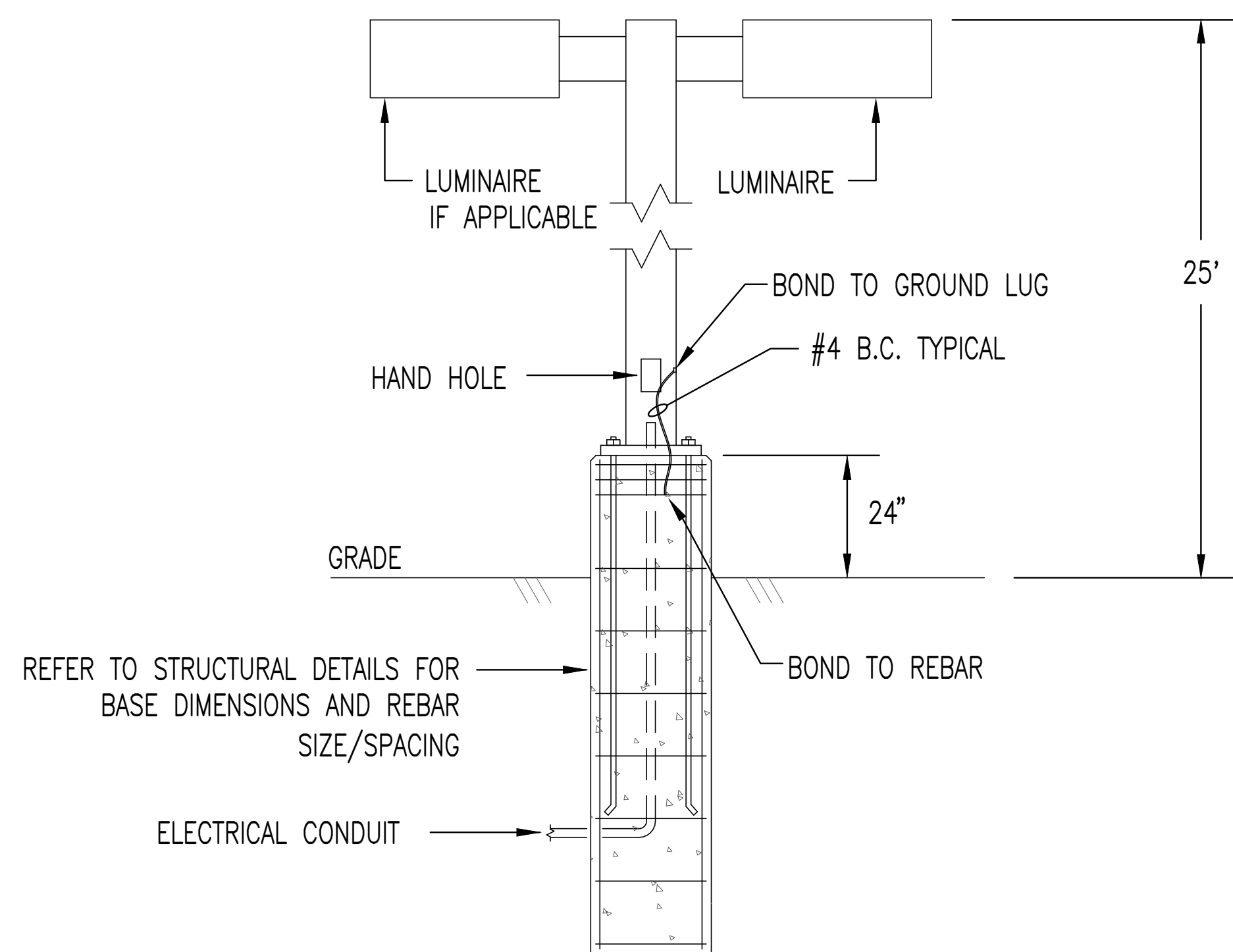


NOT FOR CONSTRUCTION



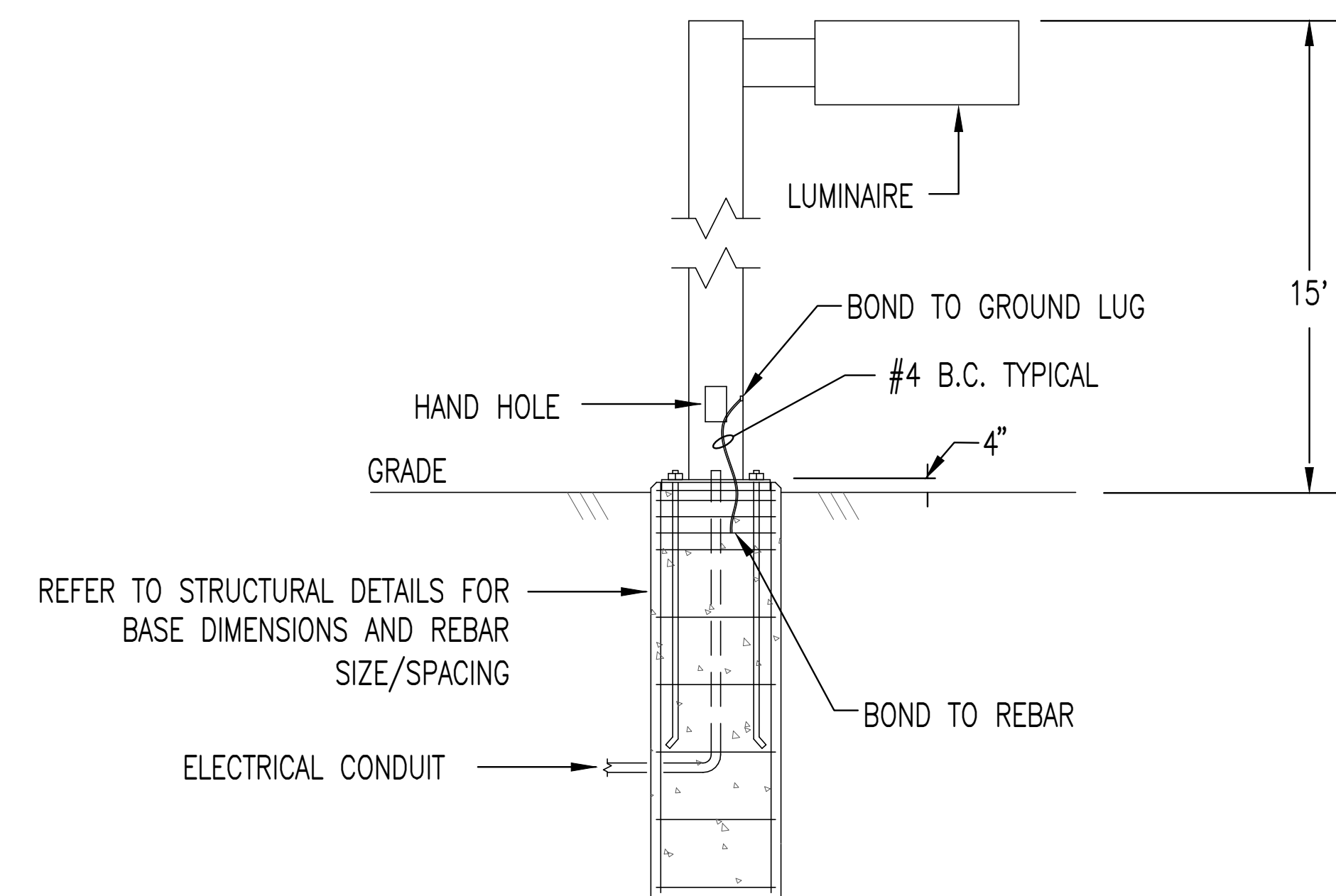
1 POLE BASE DETAIL - B1 & B2

NO SCALE



2 POLE BASE DETAIL - P1 & P2

NO SCALE



3 POLE BASE DETAIL - P3

NO SCALE

LIGHT FIXTURE SCHEDULE								
FXT. TYPE	DESCRIPTION	VOLTAGE	LAMPS		VA/ FXT.	MANUFACTURER	CATALOG NUMBER	NOTES
			TYPE	QTY./ FXT.				
B1	40" TALL, 8" WIDE EXTERIOR DIE CAST MARINE GRADE ALUMINUM LED BOLLARD. IMPACT RESISTANT, IP65 RATING. CLEAR GLASS LENS. FINISH TO BE SELECTED BY ARCHITECT.	UNIV	LED 3000K	N/A	29	LIGMAN LIGHTING USA	ULI-10021-29w-T3-W30-120/277v	
B2	40" TALL, 9 1/2" WIDE EXTERIOR CEMENT WITH DIE CAST COPPER AND ALUMINUM SUPPORTS LED BOLLARD. IMPACT RESISTANT, IP54 RATING. CLEAR GLASS LENS. FINISH TO BE SELECTED BY ARCHITECT.	UNIV	LED 3000K	N/A	31	KIM LIGHTING	GEM1C-LED-27L-4K-UV	
D1	RECESSED 1100 LUMEN 6" ROUND LED DOWNLIGHT. REMOTE PHOSPHOR LED LIGHT ENGINE, MINIMUM OF 70 LUMENS PER WATT, 1100 LUMEN MODULE. CLEAR SEMI-DIFFUSE ALZAK REFLECTOR. FINISH TO BE SELECTED BY ARCHITECT.	UNIV	LED 3000K	N/A	13	PRESCOLITE	LF6SL-DM1-11L-30K-8	
P1	LED POLE MOUNTED AREA LIGHT. 25' POLE WITH BASE COVER. EXTRUDED ALUMINUM DRIVER ENCLOSURE. DIE-CAST ALUMINUM END CAPS AND DIE-CAST ALUMINUM HEAT SINKS. HIGH EFFICIENCY OPTICS. FIXED OUTPUT DRIVER. EXTRUDED ALUMINUM MOUNTING ARM. 12,500 NOMINAL LUMENS. 1A NOMINAL POWER LUMENS. TYPE T3 DISTRIBUTION. 80 CRI. FINISH TO BE SELECTED BY ARCHITECT.	UNIV	LED 4000K	N/A	113	COOPER LIGHTING SOLUTIONS	GLEON-AF-02-LED-E1-T3	
P2	DOUBLE-HEADED LED POLE MOUNTED AREA LIGHT. 25' POLE WITH BASE COVER. EXTRUDED ALUMINUM DRIVER ENCLOSURE. DIE-CAST ALUMINUM END CAPS AND DIE-CAST ALUMINUM HEAT SINKS. HIGH EFFICIENCY OPTICS. FIXED OUTPUT DRIVER. EXTRUDED ALUMINUM MOUNTING ARM. 12,500 NOMINAL LUMENS. 1A NOMINAL POWER LUMENS. TYPE T3 DISTRIBUTION. 80 CRI. FINISH TO BE SELECTED BY ARCHITECT.	UNIV	LED 4000K	N/A	226	COOPER LIGHTING SOLUTIONS	GLEON-AF-02-LED-E1-T3	
P3	LED POLE MOUNTED AREA LIGHT. 25' POLE WITH BASE COVER. EXTRUDED ALUMINUM DRIVER ENCLOSURE. DIE-CAST ALUMINUM END CAPS AND DIE-CAST ALUMINUM HEAT SINKS. HIGH EFFICIENCY OPTICS. FIXED OUTPUT DRIVER. EXTRUDED ALUMINUM MOUNTING ARM. 6,400 NOMINAL LUMENS. 1A NOMINAL POWER LUMENS. TYPE T4 FORWARD THROW DISTRIBUTION. 80 CRI. FINISH TO BE SELECTED BY ARCHITECT.	UNIV	LED 4000K	N/A	59	COOPER LIGHTING SOLUTIONS	GLEON-AF-01-LED-E1-T4FT	
W1	6 1/2" WIDE, 15" TALL LED RECTANGULAR WALL SCONCE. IP43 RATED ALUMINUM HOUSING. OPAL-WHITE ACRYLIC DIFFUSERS, 900 DELIVERED LUMENS. FINISH TO BE SELECTED BY ARCHITECT.	UNIV	LED 3000K	N/A	21	TMS LIGHTING	SA835-O-21LED-30K-120-F15-OP	
W2	17" WIDE, 8 1/2" TALL TRAPAZOID LED WALL MOUNTED FIXTURE. IP65 RATED, DIE-CAST ALUMINUM HOUSING. 1,500 NOMINAL LUMENS. FINISH TO BE SELECTED BY ARCHITECT.	UNIV	LED 3000K	N/A	12	LITHONIA LIGHTING	WST-LED-P1-30K-VW-MVOLT	
W3	3" DIAMETER, 8" TALL CYLINDER LED WALL MOUNTED FIXTURE. IP66 RATED, DIE-CAST ALUMINUM HOUSING. 1,200 NOMINAL LUMENS. FINISH TO BE SELECTED BY ARCHITECT.	UNIV	LED 3000K	N/A	20	BK LIGHTING	CK-LED-x63-WFL	

PLAN COMMISSION + DESIGN REVIEW APPLICATION 10/28/2020

ORIGINAL ISSUE: 10/28/2020

REVISIONS:		
No.	Description	Date
1	VILLAGE RESUBMIT	11/04
2	VILLAGE RESUBMIT	11/19

4425.0000 PROJECT NUMBER

BWJ JJA
DRAWN BY CHECKED BY

KEY PLAN

Arlington Heights Senior

SCHEDULES & DETAILS

E0.3



NOT FOR CONSTRUCTION

PLAN COMMISSION + DESIGN REVIEW APPLICATION 10/28/2020

ORIGINAL ISSUE: 10/28/2020

Revisions:	No.	Description	Date
	1	VILLAGE RESUBMIT	11/04
	2	VILLAGE RESUBMIT	11/19

4425.0000
PROJECT NUMBER

BJW JJA
DRAWN BY CHECKED BY

KEY PLAN

Saurel 2

TMS LIGHTING ESTABLISHED 1923

SA835

Project: _____
Type: **W1**
Quantity: _____

Notes: _____

1 • Location

I: Indoor
O: Outdoor

2 • Lamping

13CF2: 2x 13W CF (PL-C)
18CF2: 2x 18W CF (PL-C)
21LED: 21W LED (CRI 80)

3 • LED CCT (color temp.)

30K: 3000K
35K: 3500K
40K: 4000K

4 • Voltage

120: 120V
277: 277V
347: 347V (CF only)

5 • Finish

F05: White
F09: Pewter
F15: **Matte black**
F16: Glass black
F18: Flat aluminum
F19: Mirror silver
F21: Architectural bronze
F24: Melted platinum (textured)
F25: Melted gold (textured)
F26: Melted copper (textured)
F31: Silver metallic
F33: Pyrite bronze
RAL: RAL custom color (specify)

6 • Diffuser

OP: **Opal-white acrylic**
SD: Sand-blasted white acrylic

7 • Dimming

—: None
DIM: CF dimming (Advance Mark 10 @)
DIMV: CF dimming (Advance Mark 7 @; 0-10V)
DIMD: CF dimming (Advance DALI)
DIME: CF dimming (Lutron Ecosystem @)
DIML: LED dimming (0-10V, current-sinking)
Note: Use a current-sinking dimming system (by others) for LED dimming. The compatibility of this product is not guaranteed with all control systems.
Available for systems with 120-277V supply voltage only.

8 • Emergency

—: None
EMR: Remote LED or CF
EMCR: Remote LED or CF with cold pack
Note: Available for systems with 120-277V supply voltage only. The test switch and indicator light would be remote.
Remote LED: (20 ft. / 6.096 m max. distance from EM to LED; min. operating temp. +5C/+40F; dry location)
Remote LED with cold pack: (20 ft. / 6.096 m max. distance from EM to LED; min. operating temp. -20C/-4F)
Remote CF: (7 ft. / 2.134 m max. distance from EM to lamp; min. operating temp. +5C/+40F; dry location)
Remote CF with cold pack: (7 ft. / 2.134 m max. distance from EM to lamp; min. operating temp. -20C/-4F)

Note: Some options may not be compatible with others. To ensure compatibility, please visit tmslighting.com, on the "configure" page of this luminaire, and use the configuration tool.

CATSKILL LED

IP66 RATED

CATALOG NUMBER LOGIC

Example: CK LED x S A

MATERIAL
Aluminum

SERIES
CK Catskill

SOURCE
LED Chip on board Technology

LED TYPE
x 8 2W/27 K/8 CRI x62 2 W/3 K/8 CRI x66 27W/4 K/8 CRI
x 2W/3 K/8 CRI **x63 7 W/4 K/8 CRI** x67 27W/27 K/ CRI
x6 2W/4 K/8 CRI x64 27W/27 K/8 CRI x68 27W/3 K/ CRI
x6 2 W/27 K/8 CRI x6 27W/3 K/8 CRI x6 27W/3 K/8 CRI

OPTICS
S Sport () FL Flood (3-1) **W1** Wide Flood (8-1)

FINISH (See page 3 for full-color swatches)
Standard Finish () L W L LW WH WHM SA VER
r mium Finish () AMG AQW CM GE CA CMG CRH CRM HUS MDS N LOC
RMS SDS SMG TWF WC WRB
A to avoid () RAL Finish

LENS TYPE*
C ar (Standard)
Spr ad 2 Soft Focus 3 R cti in ar

SHIELDING*
Non ycomb aff

CAP STYLE
A 4 *

C Flush
D 4 * L ss W pho (int nor us on y)
E * L ss W pho (int nor us on y)

*Accommodates up to 2 lens/shielding media.

B-K LIGHTING MADE IN THE USA 855.438.8800 | INFO@BKLIGHTING.COM | BKLIGHTING.COM

1 FIXTURE TYPE W1
NO SCALE

3 FIXTURE TYPE W3
NO SCALE

WST LED Architectural Wall Sconce

Capable Luminaire

This item is an A+ capable luminaire, which has been designed and tested to provide consistent color appearance and system-level interoperability.

- All configurations of this luminaire meet the Acuity Brands' specification for chromatic consistency.
- This luminaire is A+ Certified when ordered with DTL* controls marked by a **shaded background**. DTL* equipped luminaires meet the A+ specification for luminaire to photocontrol interoperability!
- This luminaire is part of an A+ Certified solution for ROAM® or xPoint™ Wireless control networks, providing out-of-the-box control compatibility with simple commissioning, when ordered with drivers and control options marked by a **shaded background**.

To learn more about A+, visit www.acuitybrands.com/aplus, or ordering tree for details.

A+ Certified Solutions for ROAM require the order of one ROAM node per luminaire. Sold Separately. [Link to Roam](#). Link to DTL DLU.

Optional Back Box (PBBW)

Height: 8.49" (21.81 cm)
Width: 17.01" (43.21 cm)
Depth: 1.70" (4.32 cm)

Optional Back Box (BBW)

Height: 8" (20.32 cm)
Width: 5.12" (13.01 cm)
Depth: 1.12" (2.85 cm)

Ordering Information

EXAMPLE: WST LED P1 40K VF MVOLT DBDXTD

WST LED	Performance Package	Color temperature	Distribution	Voltage	Mounting	Shipped included
W1	P1 1000 lumen package	27K 3000K	WF Visual center forward throw	120V 277V	120°	Shelf-mounting bracket
	F2 1000 lumen package	35K 3500K	WF Visual center wide	120° 347V	120°	Shelf-mounting bracket
	F3 6000 lumen package	40K 4000K		200° 480V	240°	Shipped separately
		50K 5000K				BBW Shelf-mounting back box* PBBW Flush-mounting back box*

System	Finish (optional)
W1	Black bronze
W2	Black
W3	Natural aluminum
W4	White
W5	Sandstone
W6	Textured dark bronze
W7	Textured black
W8	Textured natural aluminum
W9	Textured white
W10	Textured sandstone

Accessories

NOTES:

- MVOLT driver operates on any line voltage from 120-277V/350-480V.
- Single Line (SL) requires 120V/277V or 347V Double Line (DL) requires 200V/240V or 480V.
- Also available as a separate accessory, see accessories.
- Top unidirectional standard.
- Not available with 100-192V. See PER Table.
- Reference Motion Sensor Table.
- Need to specify 100, 200, 240 or 480V.
- PhotoCell ambient and shipped as a separate line item from Acuity Brands Controls. Shading tape included.
- Not available with Emergency options, PE or PER systems.
- DMS system not available with standalone or networked emergency controls.
- Not available with 347/480V.
- Battery pack rated for 207 to 402°C.
- Comes with PBBW.
- Battery powered (B) option.
- Not available with BBW.
- Must order with fixture, not as emergency.
- Requires luminaire to be specified with PER, PERS or PERP option. See PER Table.

Emergency Battery Operation

The emergency battery backup is integral to this luminaire — no external housing required. This design provides reliable emergency operation while maintaining the aesthetics of the product. All emergency backup configurations include an independent secondary driver with an integral relay to immediately detect AC power loss, ensuring uninterrupted, self-sustaining operation. The emergency battery will power the luminaire for a minimum duration of 90 minutes (duration of three hours) from the time supply power is lost, per International Building Code Section 1005 and 1010.1.1.2.2 (2012 IBC Code Section 1010.1.1.2.2), provided luminaires are mounted at an appropriate height and furnished as an open bank with no other obstructions. The examples below show illuminance of 1 fc average and 0.1 fc minimum of the P1 power package and VF distribution product in emergency mode.

2 FIXTURE TYPE W2
NO SCALE