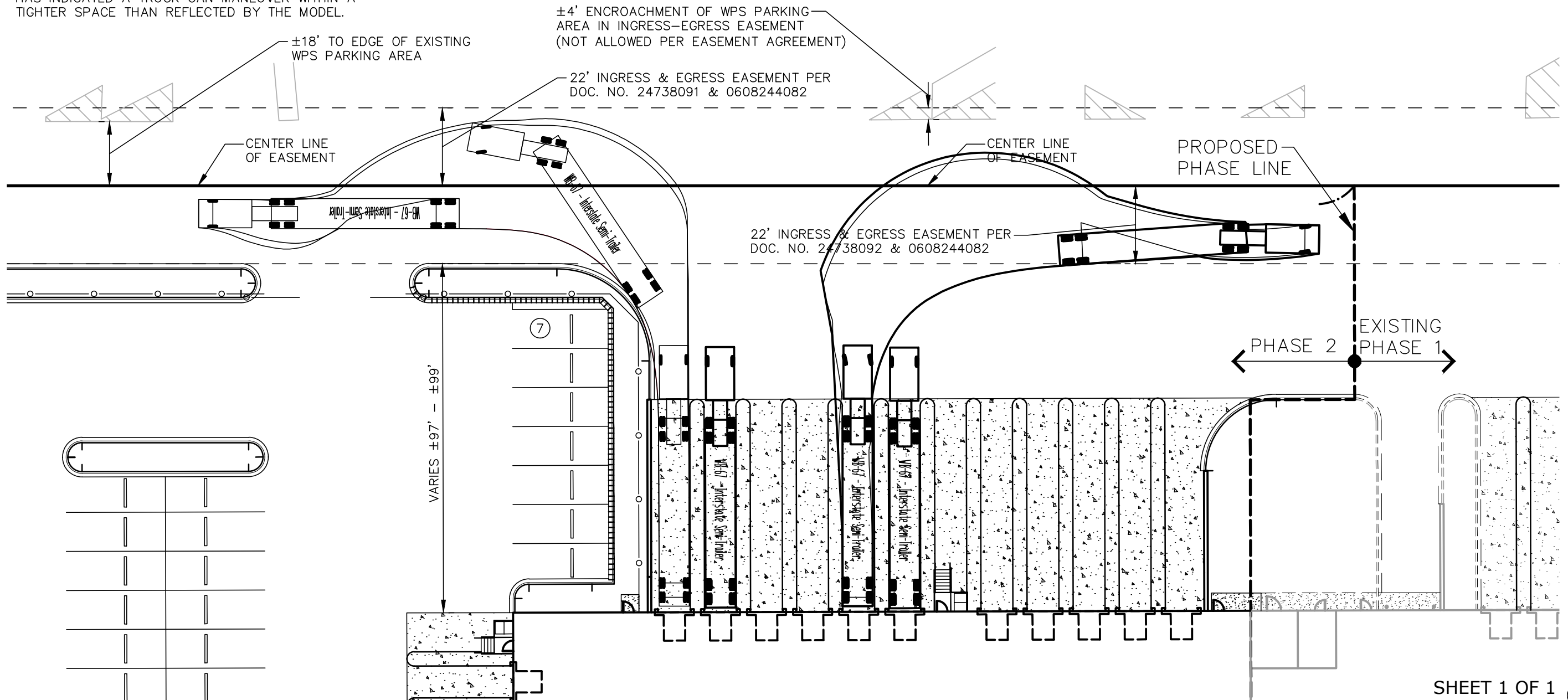


PROJECT NO.	56412720
DATE	02/05/21
SCALE	1"=30'
PROJ. MGR.	PDL
PROJ. ASSOC.	RWG

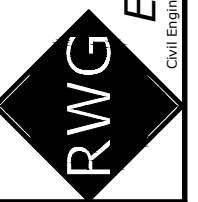
NOTE: EXHIBIT REFLECTS A WORST CASE CONDITION WITH A CONSERVATIVE DESIGN MODEL. FIELD EXPERIENCE HAS INDICATED A TRUCK CAN MANEUVER WITHIN A TIGHTER SPACE THAN REFLECTED BY THE MODEL.



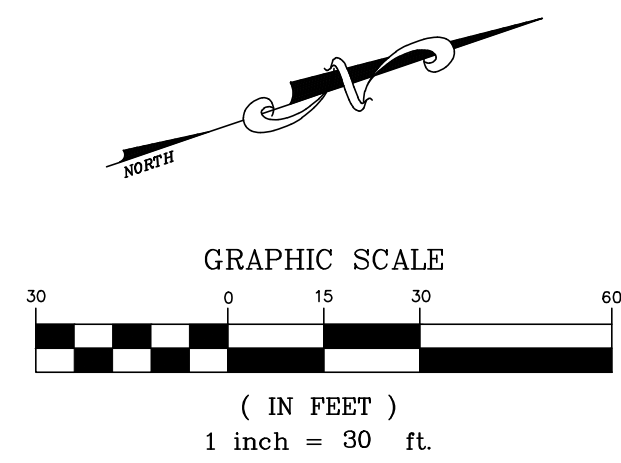
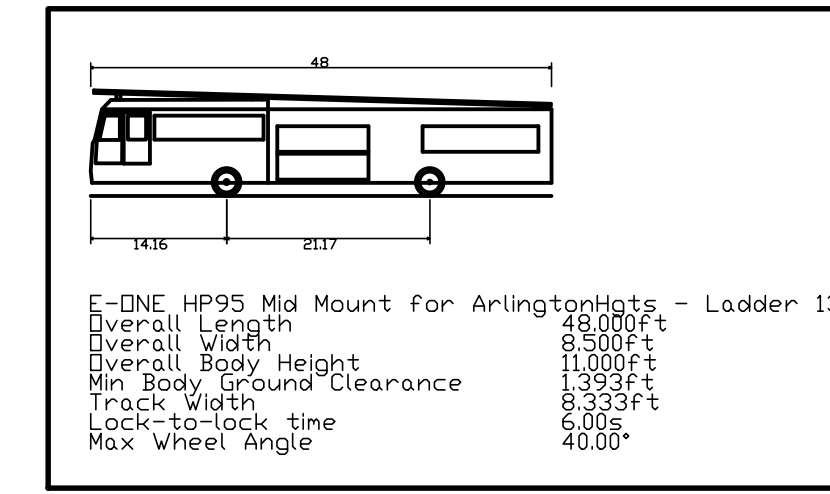
ARLINGTON HEIGHTS INDUSTRIAL
 ARLINGTON HEIGHTS, ILLINOIS
 TRUCK ROUTING EXHIBIT

975 E. 22nd St, Suite 400
 Wheaton, IL 60189
 630.480.7889
 www.rwg-engineering.com

Engineering, LLC
 Civil Engineering • Real Estate Consulting • Project Management



© COPYRIGHT 2018



PROPOSED TEMPORARY PARKING PER PHASE 1 SCHEMATIC SITE PLAN, DATED 11-17-2020 FROM WARE MALCOMB

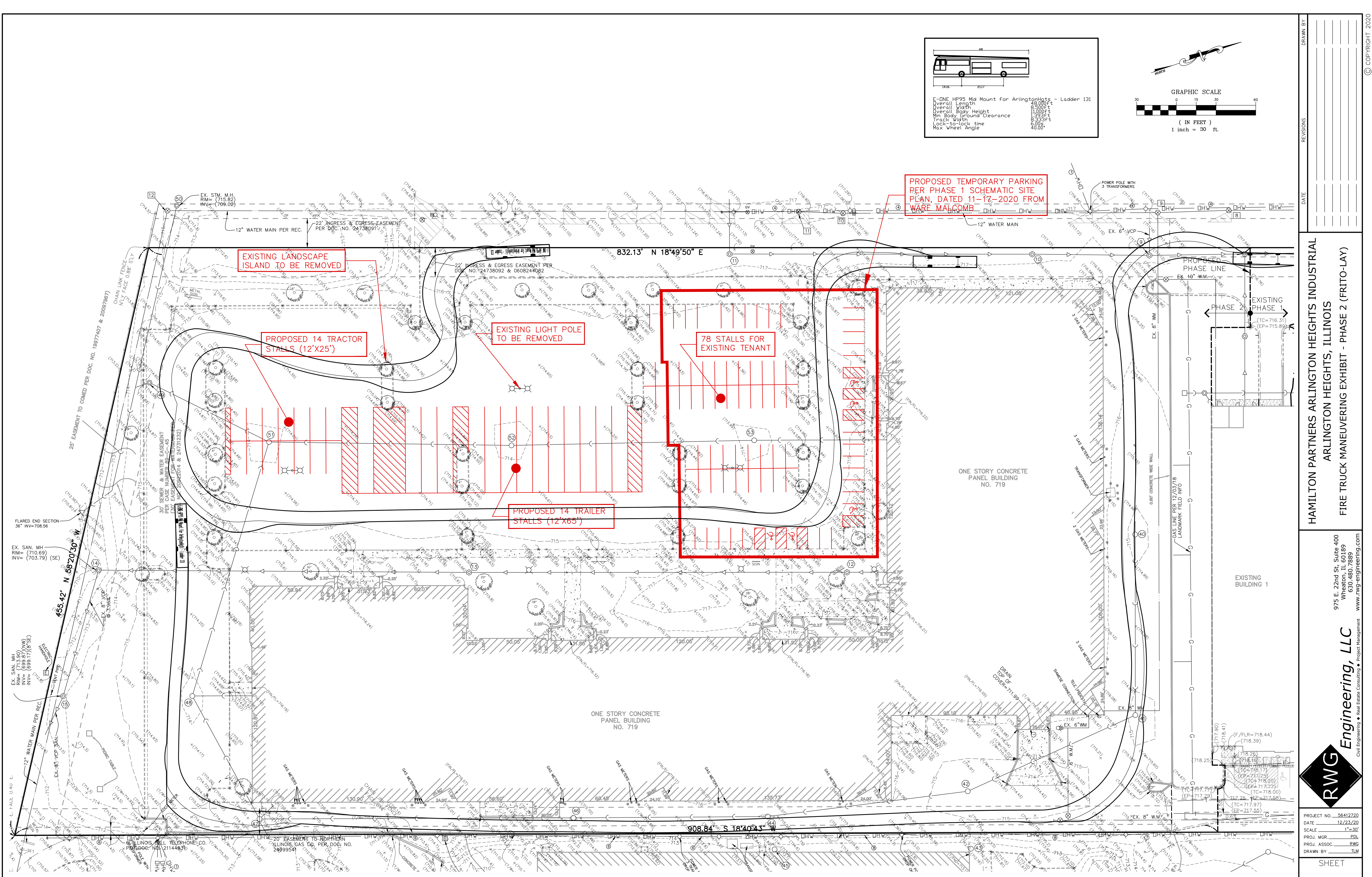
EXISTING LANDSCAPE ISLAND TO BE REMOVED

PROPOSED 14 TRACTOR STALLS (12'X25')

EXISTING LIGHT POLE TO BE REMOVED

78 STALLS FOR EXISTING TENANT

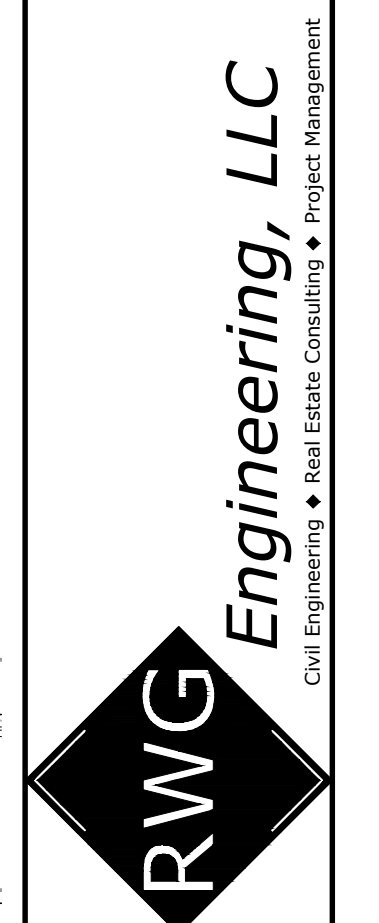
PROPOSED 14 TRAILER STALLS (12'X65')



REVISIONS	DATE	DRAWN BY

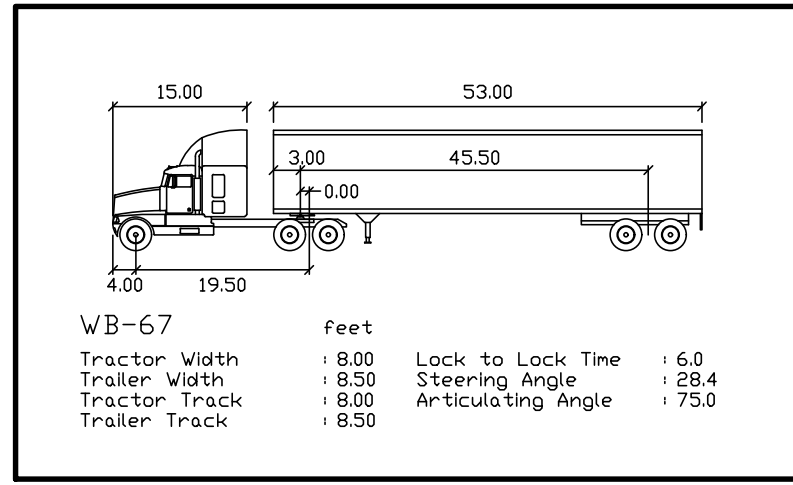
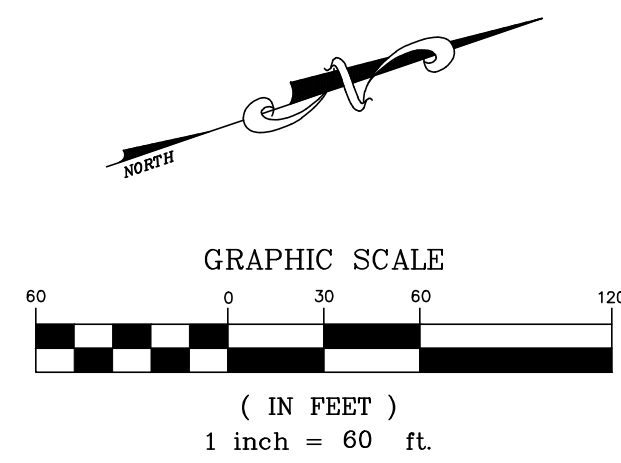
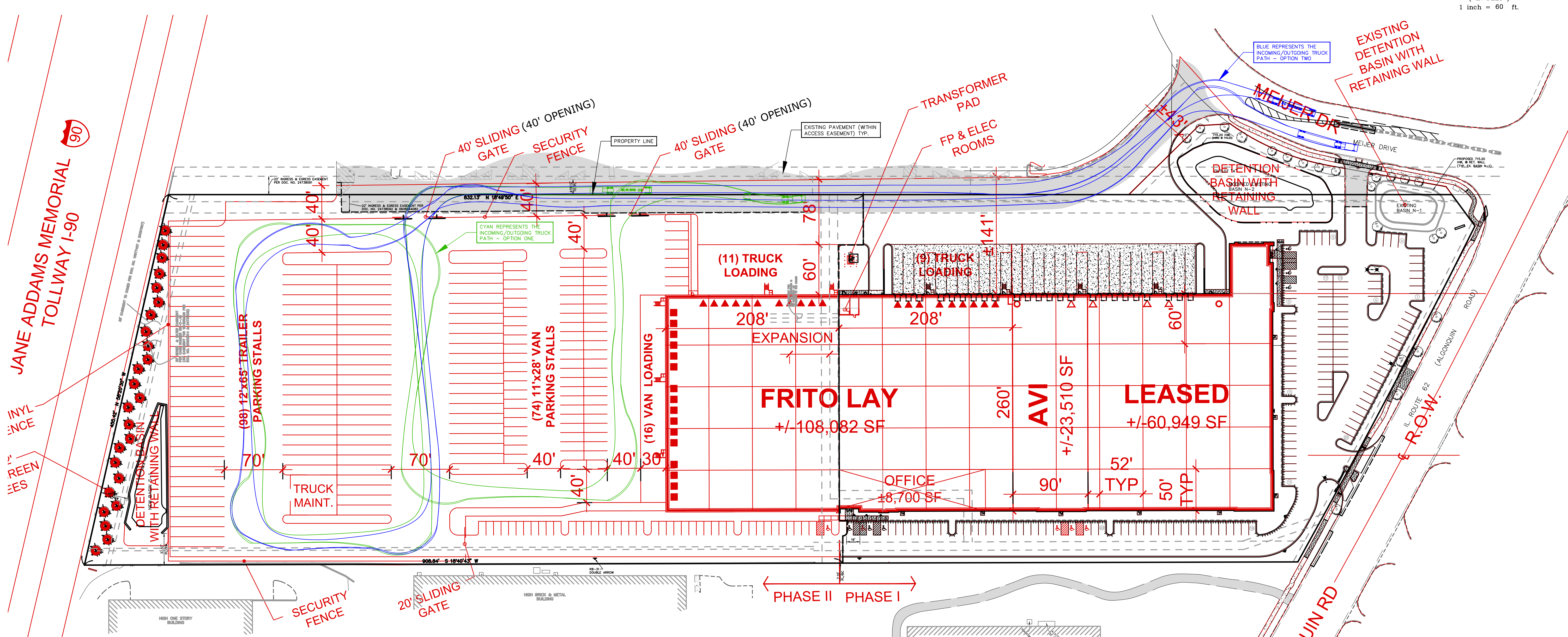
HAMILTON PARTNERS ARLINGTON HEIGHTS INDUSTRIAL
 ARLINGTON HEIGHTS, ILLINOIS
 FIRE TRUCK MANEUVERING EXHIBIT - PHASE 2 (FRITO-LAY)

975 E. 22nd St, Suite 400
 Wheaton, IL 60189
 630-480-7889
 www.rwg-engineering.com



PROJECT NO. 56412720
 DATE 12/23/20
 SCALE 1"=30'
 PROJ. MGR. PDL
 PROJ. ASSOC. RWG
 DRAWN BY. TLM

SHEET
 1 OF 1



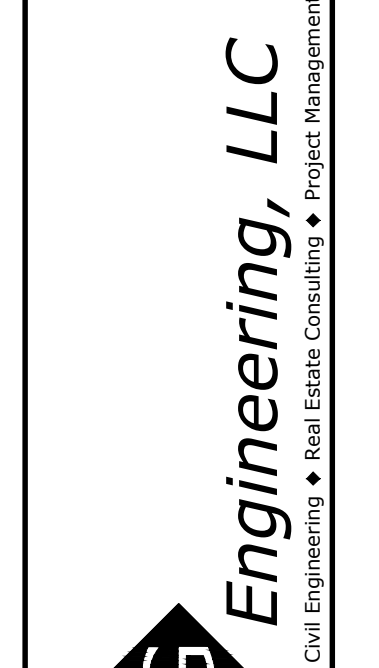
KEY

- ENTERING/LEAVING - TRUCK PATH (CYAN) (WB-67 DESIGN VEHICLE) - OPTION ONE
- ENTERING/LEAVING - TRUCK PATH (BLUE) (WB-67 DESIGN VEHICLE) - OPTION TWO

DRAWN BY: _____
 DATE: _____
 REVISIONS: _____

HAMILTON PARTNERS ARLINGTON HEIGHTS INDUSTRIAL
 ARLINGTON HEIGHTS, ILLINOIS
 FRITO-LAY - TRUCK ACCESS EXHIBIT

975 E. 22nd St, Suite 400
 Wheaton, IL 60189
 630-480-7889
 www.rwg-engineering.com



PROJECT NO. 56412220
 DATE 10/13/20
 SCALE 1"=60'
 PROJ. MGR. PDL
 PROJ. ASSOC. RWG
 DRAWN BY TLM