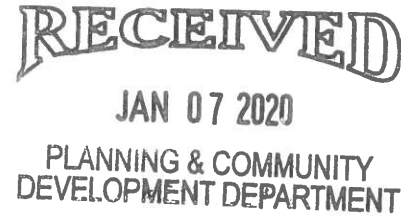


Arlington Beer Company, Inc.

Round 1 Response



1. Deb Pierce – Building and Life Safety Dept.

- Based on space limitations and given the second floor has a useable square footage of approximately 650 sq ft. the design incorporates an exterior vertical platform lift. Please see attached specs.

2. Fire Safety Supervisor/ Fire Safety Division

- We have two remote exits...please see architectural plans.
- We will be using a vertical platform lift please see attached specs.
- All codes will apply
- Knox Box will be installed as required
- Exit signs will be illuminated
- Address numbers will be within code requirements

3. Cris Papierniak/ Public Works

- New water meter and RPZ will be installed
- Existing sanitary line will be used and televised inspection will be conducted.

4. Michael Pagones/ Village Engineer

- No plan to construct a parking lot area on premises.
- Please see landscape plan for detailed outdoor materials.
- Please see lighting plan on landscape plan.
- Delivery activities to the premises will generally be between the hours of 8am-3pm Monday-Friday, deliveries will be made via vans and small box trucks. Deliveries from the facility will be made Monday – Friday 8am – 3pm via delivery van. All ingoing and outgoing deliveries will be done via the rear of the property.
- Food truck limitations noted.
- Parking survey completed and additional dates were done over the summer with similar results please see attached.
- Please see plat of survey for easement details.
- Parking has been addressed and documentation provided to the Village.

5. Engineering Plan Review Requirements

- All site plans, plats and topographic survey are attached.

6. Mark Aleckson/ Fire Department

- Will adhere to code
- Brewery tours are planned
- Knox Box will be installed per requirements

7. Carrie Regilio/ Community Services Bureau:

- All comments are noted and will be brought to compliance

8. David Robb/ Plan Commission Accessibility Review:

- All comments are noted and will be brought to compliance

9. Sam Hubbard/ Planning and Community Development:

- The hours of operation for the tap room are confirmed. Brewing hours generally begin at 8am and will last up to 12 hours as needed.
- Dumpsters: please see landscape drawings.
- The tap room will have approximately 3- 4 employees at a time. We have 2 brewers.
- Design Commission in progress.
- Neighborhood meeting complete.
- Confirmed no more than 930,000 gallons of beer per year.
- The decorative metal fence in front will be 7 feet. Based on architectural design a 7 foot fence is necessary aesthetically due to the two story height of the building. It will also match the existing rear fence that is 7 feet in height. The material will be black powder coated iron. The specifics are included on the landscape drawings.
- The material will be concrete at the rear entrance of the property.
- The appropriate bike rack will be provided as required.
- The proposed canopy will comply with the required specifications.
- Second floor square footage: please see attached document referencing retail area.
- Please see attached parking survey.

10. Landscape Comments:

- Please see attached landscape plans.

550 E. ST. CHARLES PLACE
 LOMBARD, ILLINOIS 60148
 PHONE (630) 916-8282
 FAX (630) 916-8284

PLAT OF SURVEY

BY
GENTILE AND ASSOCIATES, INC.
 PROFESSIONAL LAND SURVEYORS

LOTS 7 AND 8 IN BLOCK 5 IN DUNTON AND BIGSBY'S ADDITION TO ARLINGTON HEIGHTS,
 A SUBDIVISION OF THE WEST 960 FEET OF THE SOUTHWEST 1/4 OF THE SOUTHEAST
 1/4 OF SECTION 23, TOWNSHIP 42 NORTH, RANGE 11, EAST OF THE THIRD PRINCIPAL
 MERIDIAN, IN COOK COUNTY, ILLINOIS.

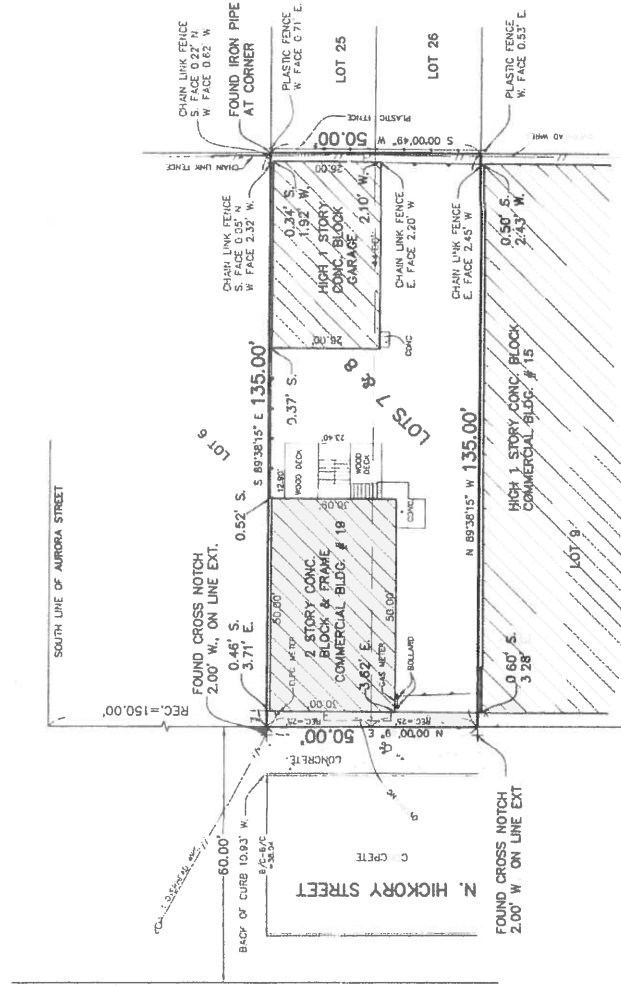
CONTAINING: 6,750 sq. ft. (0.15 acres)

PROPERTY COMMONLY KNOWN AS: 19 N. HICKORY STREET, ARLINGTON HEIGHTS, ILLINOIS

GRAPHIC SCALE



(IN FEET)
 1 inch = 20 ft.



STATE OF ILLINOIS S.S.
 COUNTY OF DUPAGE



I, JOSEPH F. GENTILE, HEREBY CERTIFY THAT A SURVEY HAS
 BEEN MADE AT AND UNDER MY DIRECTION, OF THE PROPERTY DESCRIBED
 ABOVE, AND THAT THE PLAT HEREON DRAWN IS A CORRECT REPRESENTATION
 OF SAID SURVEY. THIS PLAT CONFORMS TO THE MINIMUM STANDARD
 REQUIREMENTS FOR A BOUNDARY SURVEY.

JULY 17, A.D. 2013

BY:

Frank J. Madaras
 ILLINOIS PROFESSIONAL LAND SURVEYOR NO. 2925
 MY LICENSE EXPIRES NOVEMBER 30, 2014

ILLINOIS PROFESSIONAL DESIGN FIRM LICENSE NO. 184,002870

BASE SCALE: 1 INCH = 20 FEET
 DISTANCES ARE MARKED IN FEET AND DECIMAL PARTS THEREOF
 ORDERED BY: FRANK J. MADARAS
 DRAWN BY: MMG

CHECKED BY: LR-BG
 SURVEYED BY: LR-BG
 COMPARE ALL POINTS BEFORE BUILDING BY SAME AND AT ONCE REPORT
 ANY DIFFERENCE FOR BUILDING LINE AND OTHER RESTRICTIONS NOT
 SHOWN HEREON REFER TO YOUR ABSTRACT DEED, CONTRACT AND ZONING
 ORDINANCE

ORDER NO. 13-20352

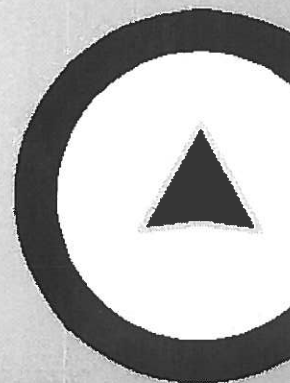
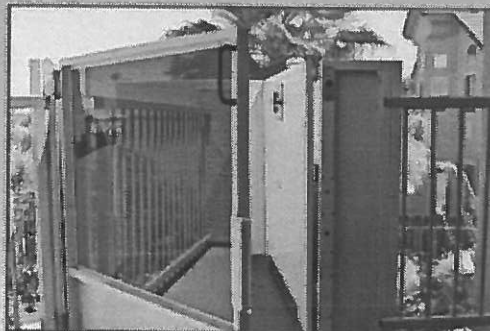
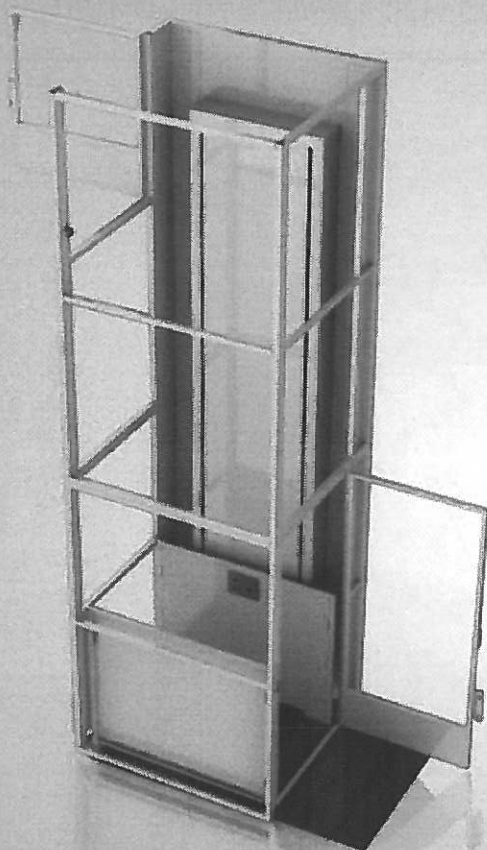


Made in the USA

Symmetry Vertical Platform Lift

Model VPC-EL

Vertical Platform Conveyance-Enclosure Lift
Residential and Commercial Application



symmetry

National Reach. Local Service.



www.symmetryelevator.com

Convenient access to all levels

Whether it's commercial or residential use, outdoors or indoors, Symmetry vertical platform lifts eliminate the barrier that stairs can cause for people with limited mobility. A cost-effective solution, platform lifts create convenient access without compromising architectural character.

A18.1 code-compliant and designed for ease of installation.

Standard Features

- 750# capacity
- Speed: 10 FPM with a 1HP, 115V motor
- Lifting height: up to 168"
- Steel constructed with electrostatic, powder-coated finish
- On-board diagnostics
- Constant pressure up/down control switch installed on the platform
- Constant pressure, elevator-style, hall call control stations provided at each landing

Optional Features

- 230V motor
- Remote mounted controller
- ADA phone for both indoor and outdoor models
- Emergency lights
- Key switch to lock platform and landing controls
- Stationary Ramp
- Battery Back-up
- Power ventilation system
- Slant roof/dome enclosure

Safety Features

- Nonskid platform surface (black)
- Alarm and emergency stop switch
- Grab rail
- Landing interlocks keep door locked when the lift platform is at another landing
- Upper final limit

Platform Sizes

- 36" W x 48" D
- 36" W x 54" D
- 36" W x 60" D
- 42" W x 60" D

Enter/Exit Configurations

- Straight through
- 90°
- Enter/Exit same side

Vertical Platform Lift Gate/Door Options

- 42" lower platform gate*
- 42" upper landing gate*
- 80" landing gate*
- Non-fire-rated red oak door**
- Fire-rated steel door

*Available with optional acrylic insert

**Also available in other wood choices, by request

VPC Enclosure Options

- Metal Infill enclosure wall panels
- Plexi-glass infill enclosure wall panels

Symmetry platform lifts come with a two-year limited parts warranty on the basic unit, including all electrical and drive components.

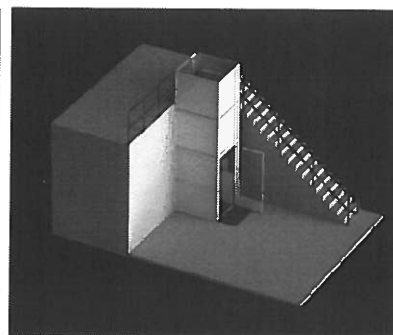
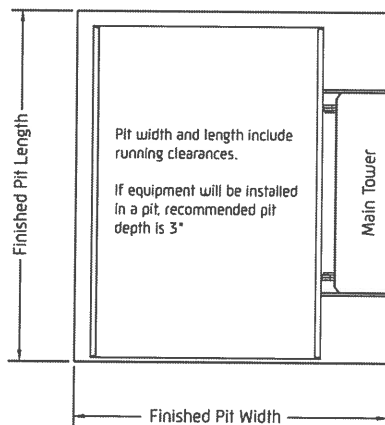
The information contained on this chart is intended for layout design only and should not be used for construction. Please contact the local representative for a job specific drawing.

VPC Drive Options

- Screw Drive
- Screw Drive with battery back-up
- Hydraulic Drive

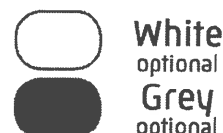
Straight through configuration			
Platform Width	Platform Length	Finished Pit Width	Finished Pit Length
36"	48"	54 1/2"	54"
36"	54"	54 1/2"	60"
36"	60"	54 1/2"	66"
42"	60"	60 1/2"	66"
90° Exit configuration			
42"	60"	58 1/4"	68"
Enter/Exit same side configuration			
36"	54"	54 1/2"	62"
36"	60"	54 1/2"	68"
42"	60"	60 1/2"	68"

Footprint Layout



Straight Through Enclosure Application Shown

Enclosure Color Options



Full selection of RAL colors available

symmetry

National Reach. Local Service.

877.375.1428 | symmetryelevator.com

303.08/11