

## **AN ORDINANCE REGULATING PARKING**

BE IT ORDAINED BY THE PRESIDENT AND BOARD OF TRUSTEES OF THE VILLAGE OF ARLINGTON HEIGHTS:

SECTION ONE: It shall be unlawful for any person, firm or corporation to park or permit to be parked, stop or stand a motor vehicle at any time on the following designated street within the corporate limits of the Village of Arlington Heights:

**South Evergreen Avenue between East Sigwalt Street and East Campbell Street as follows:**

**West side, from the northern curb of E Sigwalt St for 75 ft. in north direction;**

**West side, 156 ft. north from the northern curb of E Sigwalt St for 49 ft. in north direction;**

**West side, 269 ft. north from the northern curb of E Sigwalt St for 222 ft. in north direction;**

**West side, 571 ft. north from the northern curb of E Sigwalt St to the southern curb of E Campbell St;**

**East side, from the northern curb of E Sigwalt St for 38 ft. in north direction;**

**East side, 123 ft. north from the northern curb of E Sigwalt St for 65 ft. in north direction;**

**East side, 268 ft. north from the northern curb of E Sigwalt St for 237 ft. in north direction;**

**East side, 592 ft. north from the northern curb of E Sigwalt St to the southern curb of E Campbell St;**

Said portion of the street is depicted on the attached map, and made a part this Ordinance.

SECTION TWO: It shall be unlawful for any person, firm or corporation to park or permit to be parked a motor vehicle for more than two (2) hours on the following side of the designated street within the corporate limits of the Village of Arlington Heights:

**South Evergreen Avenue between East Sigwalt Street and East Campbell Street as follows:**

**West side, 75 ft. north from the northern curb of E Sigwalt St for 81 ft. in north direction;**

**West side, 205 ft. north from the northern curb of E Sigwalt St for 64 ft. in north direction;**

**West side, 491 ft. north from the northern curb of E Sigwalt St for 80 ft. in north direction;**

**East side, 38 ft. north from the northern curb of E Sigwalt St for 85 ft. in north direction;**

Said portion of the street is depicted on the attached map, and made a part this Ordinance.

SECTION THREE: The following portion of South Evergreen Avenue is hereby designated as a 15-minute loading zone. Notwithstanding use as a 15-minute loading zone, it shall be unlawful for any person to stand, park or stop a motor vehicle in the following designated area within the corporate limits of Arlington Heights:

**East side of South Evergreen Avenue 188 ft. north from the northern curb of E Sigwalt St for 80 ft. in north direction.**

Said portion of the street is depicted on the attached map, and made a part this Ordinance.

SECTION FOUR: The following portion of South Evergreen Avenue is hereby designated as a 15-minute loading zone. Notwithstanding use as a 15-minute loading zone, it shall be unlawful for any person to stand, park or stop a motor vehicle in the following designated area within the corporate limits of Arlington Heights Monday through Saturday between the hours of 7:00 am and 4:30 pm and on Sunday, between the hours of 7:00 am and 12:00 pm:

**East side of South Evergreen Avenue, 505 ft. north from the northern curb of E Sigwalt St for 87 ft. in north direction.**

Said portion of the street is depicted on the attached map, and made a part this Ordinance.

SECTION FIVE: That the Village Manager is hereby directed to install appropriate signs to effectuate the purposes of this Ordinance.

SECTION SIX: That any person, firm or corporation violating any of the terms of this Ordinance shall be fined not more than \$750.00 for each such offense.

SECTION SEVEN: That any and all ordinances in conflict with the provisions of this Ordinance are hereby repealed.

SECTION EIGHT: This Ordinance shall be in full force and effect from and after its passage, approval, publication in pamphlet form, and the posting of such signs in the manner provided by law.

AYES:

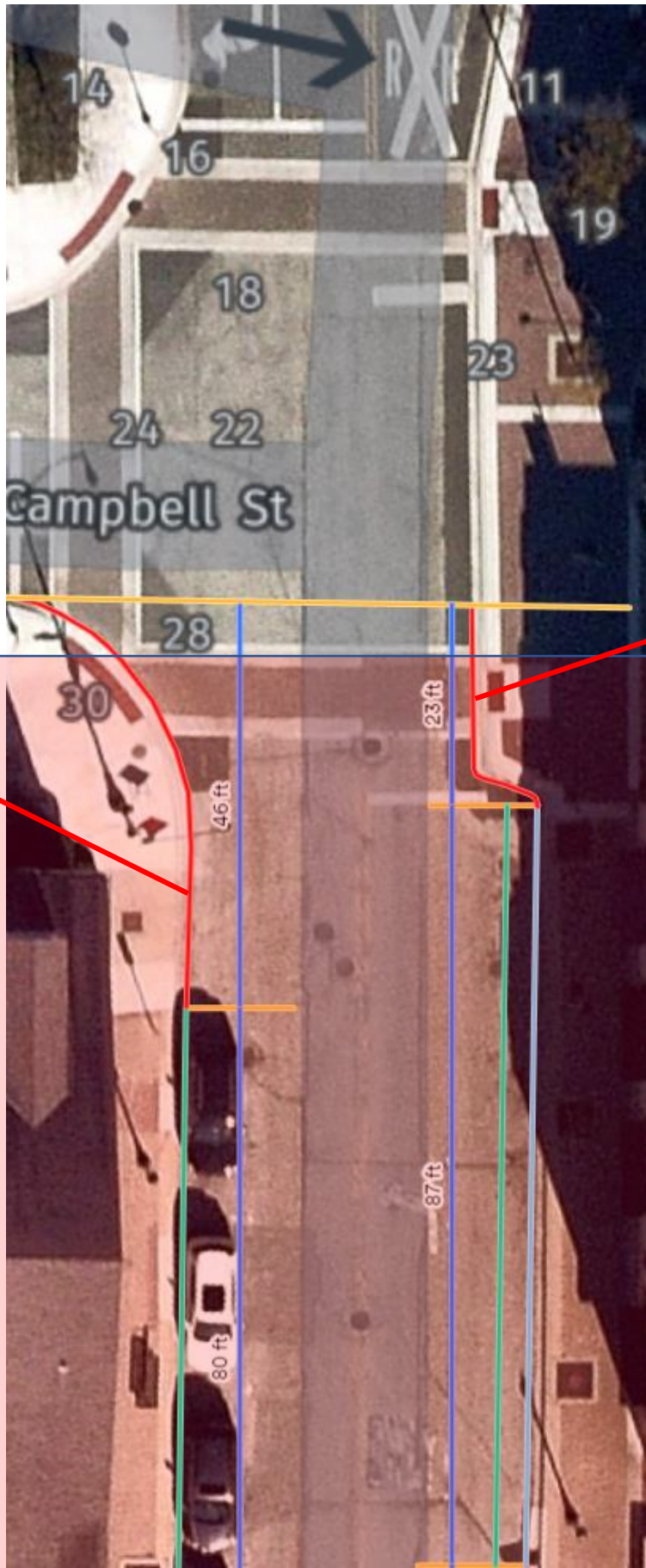
NAYS:

PASSED AND APPROVED this 18th day of January, 2022.

ATTEST:

\_\_\_\_\_  
Village President

\_\_\_\_\_  
Village Clerk



No Parking  
Stopping  
Or Standing  
46ft

No Parking  
Stopping  
Or Standing  
23ft

Overlap with  
the Map 2

## Map 2 of 5



2h Parking  
80ft

No Parking  
15 min Loading Zone  
Mon-Sat 7am-4.30pm  
Sun 7am-12pm  
87ft

Parking  
No hourly restriction  
Mon-Sat 4.30pm-2am  
Sun 12pm-2am  
87ft

Overlap with  
the Map 3

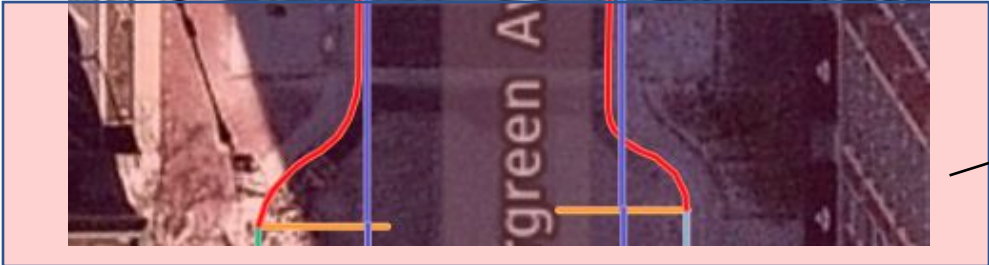


# Map 3 of 5



No Parking  
Stopping  
Or Standing  
222ft

No Parking  
Stopping  
Or Standing  
237ft



Overlap with  
the Map 4

# Map 4 of 5



2h Parking  
64ft

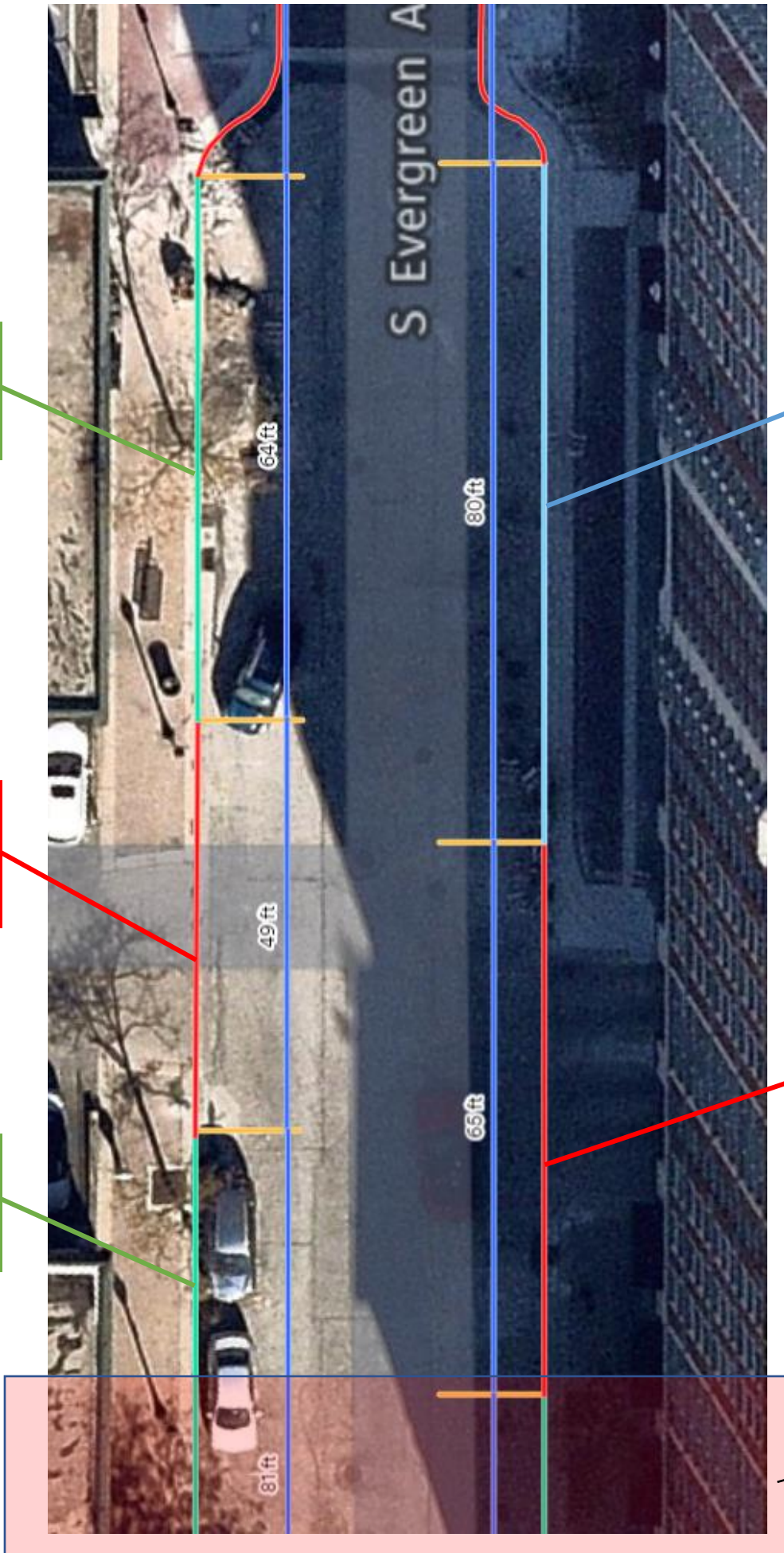
No Parking  
15 min  
Loading Zone  
80ft

No Parking  
Stopping  
Or Standing  
49ft

No Parking  
Stopping  
Or Standing  
65ft

2h Parking  
81ft

Overlap with  
the Map 5







2h Parking  
85ft

No Parking  
Stopping  
Or Standing  
75ft

No Parking  
Stopping  
Or Standing  
38ft