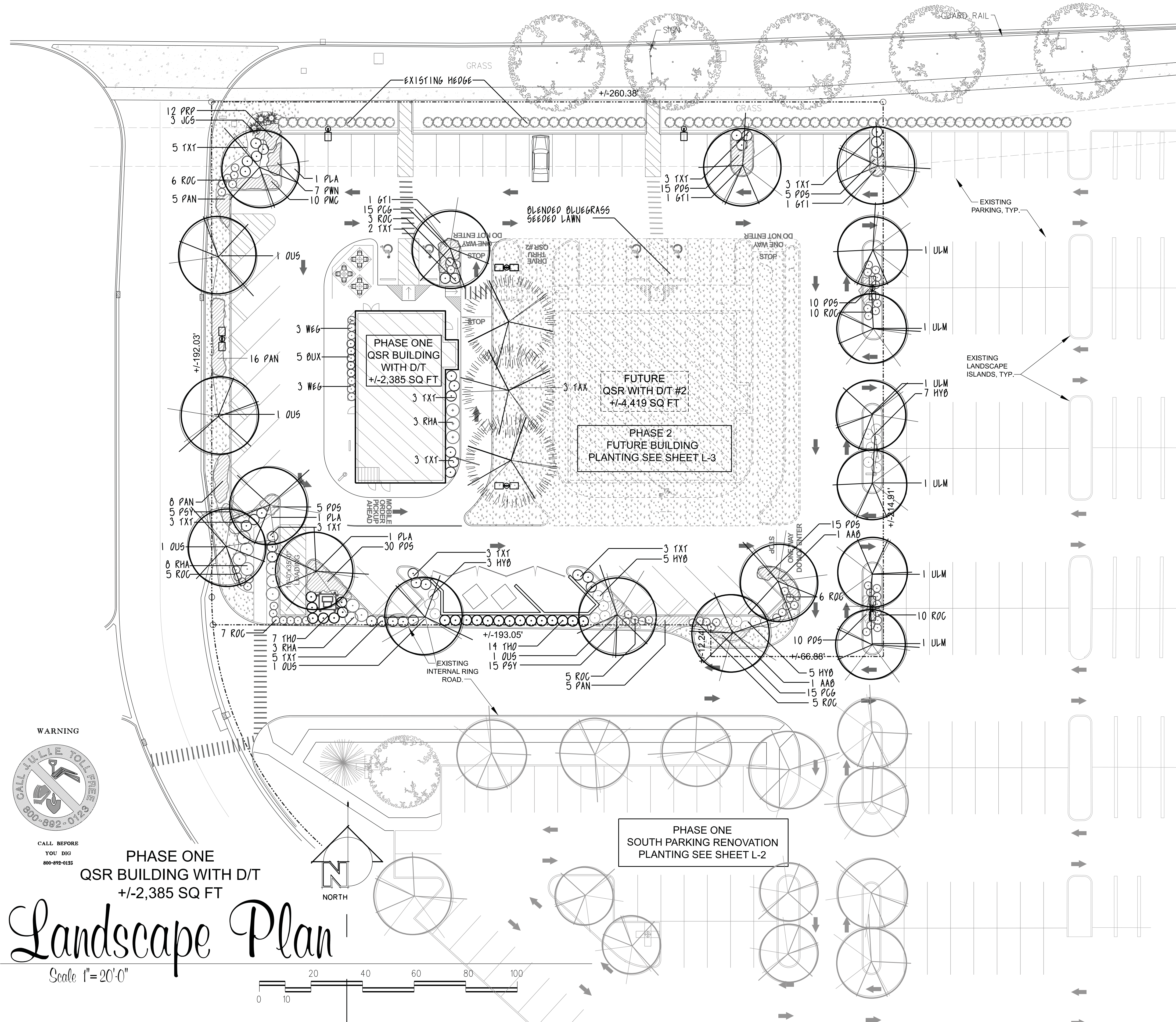
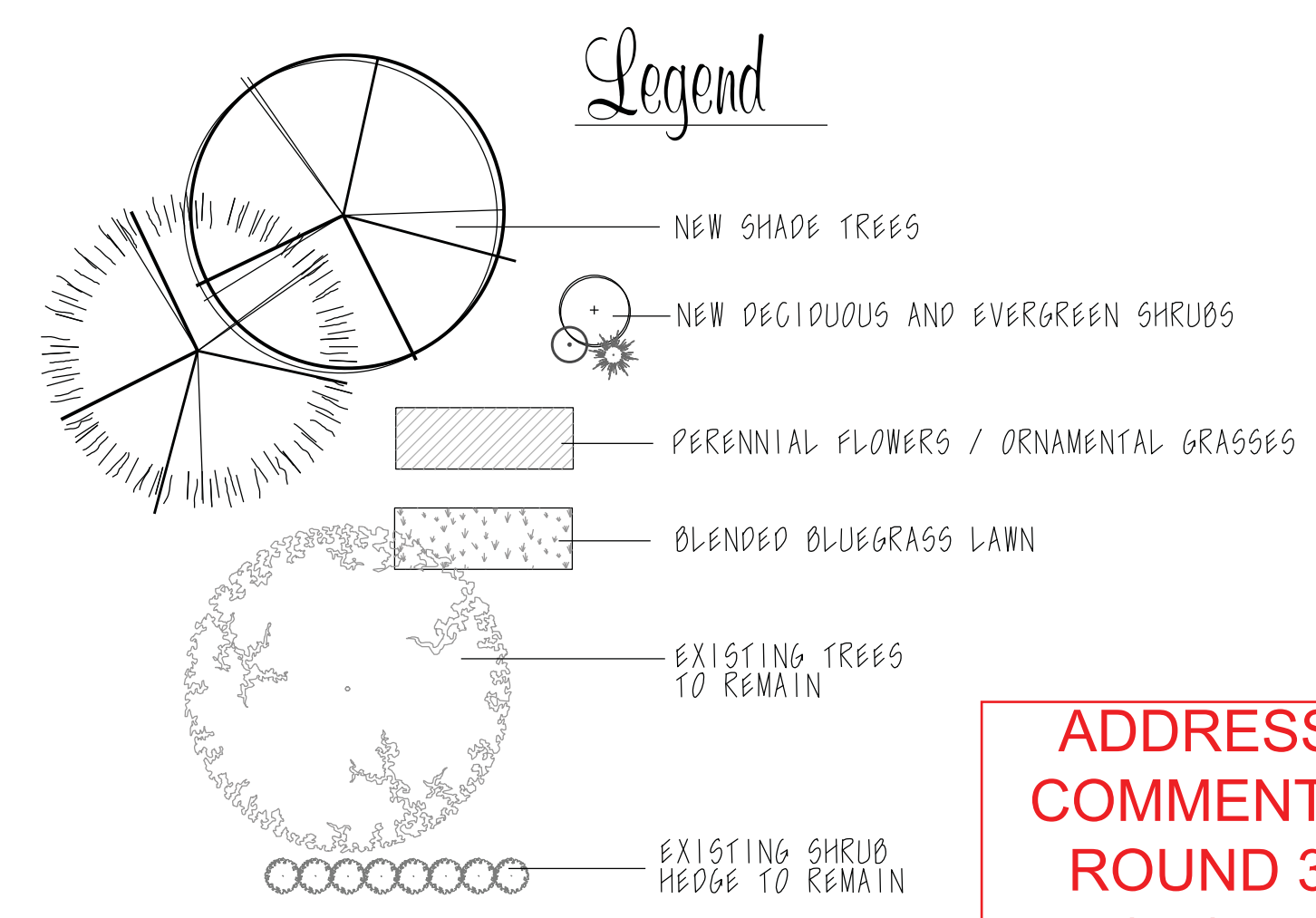


PALATINE ROAD

PLANT LIST

QTY	CODE	PLANT NAME	SIZE
3	GTI	GLEDITSIA TRIACANTHOS	SKYLINE HONEYLOCUST 4" GAL
2	AAO	ACER FREEMANI	AUTUMN BLAZE MAPLE 4" GAL
5	OUS	QUERCUS BICOLOR	SWAMP WHITE OAK 4" GAL
3	TAX	TAXODIUM DISTICHUM	BALD CYPRRESS 4" GAL
3	PLA	PLATANUS ACERIFOLIA	MORTON LONDON PLANETREE 4" GAL
6	ULM	ULMUS SPECIES	FRONTIER HYBRID ELM 4" GAL
32	TXT	TAXUS TAUTONI	TAUTON YEW 24"
3	JCS	JUNIPERUS CHINENSIS	SARGENT JUNIPER 18-24"
14	THO	THUJA OCCIDENTALIS	EMERALD GREEN ARBORVITAE 4" HT
5	BUX	BUXUS SPECIES	CHICAGO LAND GROWS BOXWOOD 18"
45	ROC	ROSA SPECIES	CORAL CARPET ROSE 18"
8	RHA	RHUS COPPELLIANA	PRAIRIE FLAME SUMAC 3" HT
5	PCG	HYDRANGEA MACROPHYLLA	BLOOMSTRUCK HYDRANGEA 30"
6	WEG	WIEGELA SPECIES	DARK HORSE WIEGELA 18"
10	PMC	COREOPSIS VERTICILLATA	ZAGREB COREOPSIS 1 GAL
25	PSY	HEMEROCALLIS SPECIES	GOING BANANAS DAYLILY 1 GAL
25	PRP	HEUCHERA MICRANTHA	GEORGIA PEACH CORALBELL 1 GAL
7	PWN	NEPETA RACEMOSA	WALKERS LOW CATMINT 1 GAL
30	PCG	GERANIUM SPECIES	MAX FREI GERANIUM 1 GAL
115	POS	SPOROBOLOUS SPECIES	PRAIRIE DROPSSEED 1 GAL
24	PAN	PANICUM SPECIES	SWITCH GRASS 1 GAL

- NOTE:
- QUANTITY LISTS ARE SUPPLIED AS A CONVENIENCE. CONTRACTOR SHALL VERIFY ALL MATERIALS QUANTITIES ON SITE.
 - ALL PLANT MATERIAL TO BE LOCALLY GROWN. ALL PLANT MATERIAL WITH THE EXCEPTION OF LOW TYPE JUNIPER, GROUNDCOVERS, PERENNIALS, SHRUBS UNDER 36" SIZE, BE BALLED AND BURLAPPED "D & D" UNLESS OTHERWISE SPECIFIED. PLANT MATERIAL TO BE GROWN IN ACCORDANCE TO STANDARDS SET BY THE AMERICAN NURSERY AND LANDSCAPE ASSOCIATION. *A.N.L.A.*
 - ALL PLANTINGS SHALL BE WATERED THOROUGHLY IN THE FIRST 24 HOURS AFTER PLANTING. ENSURE ALL AIR POCKETS ARE REMOVED AROUND ROOT BALL.
 - CONTRACTOR TO GUARANTEE PLANT MATERIAL FOR ONE YEAR FROM TIME OF PLANTING.
 - ALL PLANT BED AREAS TO BE MULCHED WITH PREMIUM SHREDDED HARDWOOD MULCH 3" DEEP AND SHALL BE SEPARATED FROM LAWN AREAS WITH A SPADED EDGING. APPLY TREFLAN HERBICIDE PER MANUFACTURER SPECIFICATIONS TO ALL PLANT BED AREAS.
 - ALL NEW LAWN AREAS TO BE A BLENDED BLUEGRASS 500 UNLESS OTHERWISE INDICATED. CONTRACTOR TO MAINTAIN LAWNS UNTIL APPROVAL AND ACCEPTANCE BY OWNERS REPRESENTATIVE. RESTORE ALL OTHER DAMAGED LAWN AREAS DUE TO CONSTRUCTION A.V.I.F.*.
 - IT IS CONTRACTORS OPTION TO STAKE TREES, BUT HIS RESPONSIBILITY TO ASSURE PLANTS REMAIN PLUMB UNTIL THE END OF GUARANTEE PERIOD.
 - PLANT SIZES LISTED ARE THE MINIMUM SIZE REQUIRED. PLANTS THAT DO NOT MEET THESE MINIMUM SIZES SHALL BE REJECTED AT CONTRACTORS EXPENSE.
 - NO PLANT SPECIES OR SIZES SHALL BE SUBSTITUTED WITHOUT PRIOR APPROVAL FROM LANDSCAPE ARCHITECT OR OWNERS REPRESENTATIVE.
 - SEE SHEETS L-4, L-5, L-6 FOR ADDITIONAL SPECIFICATIONS AND PLANTING DETAILS.

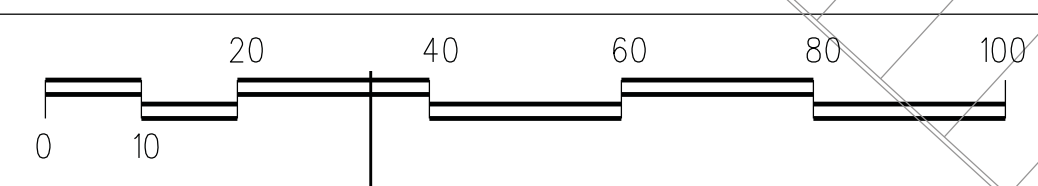


WARNING
CALL BEFORE YOU DIG
800-892-0122

PHASE ONE
QSR BUILDING WITH D/T
+/-2,385 SQ FT

Landscape Plan

Scale 1"=20'-0"



ADDRESS
COMMENTS
ROUND 3
12/22/2021

Landscape Plans Prepared By:
Paul A. Couture, P.E.A. 8/9/21
P.A. License Number 157-00328



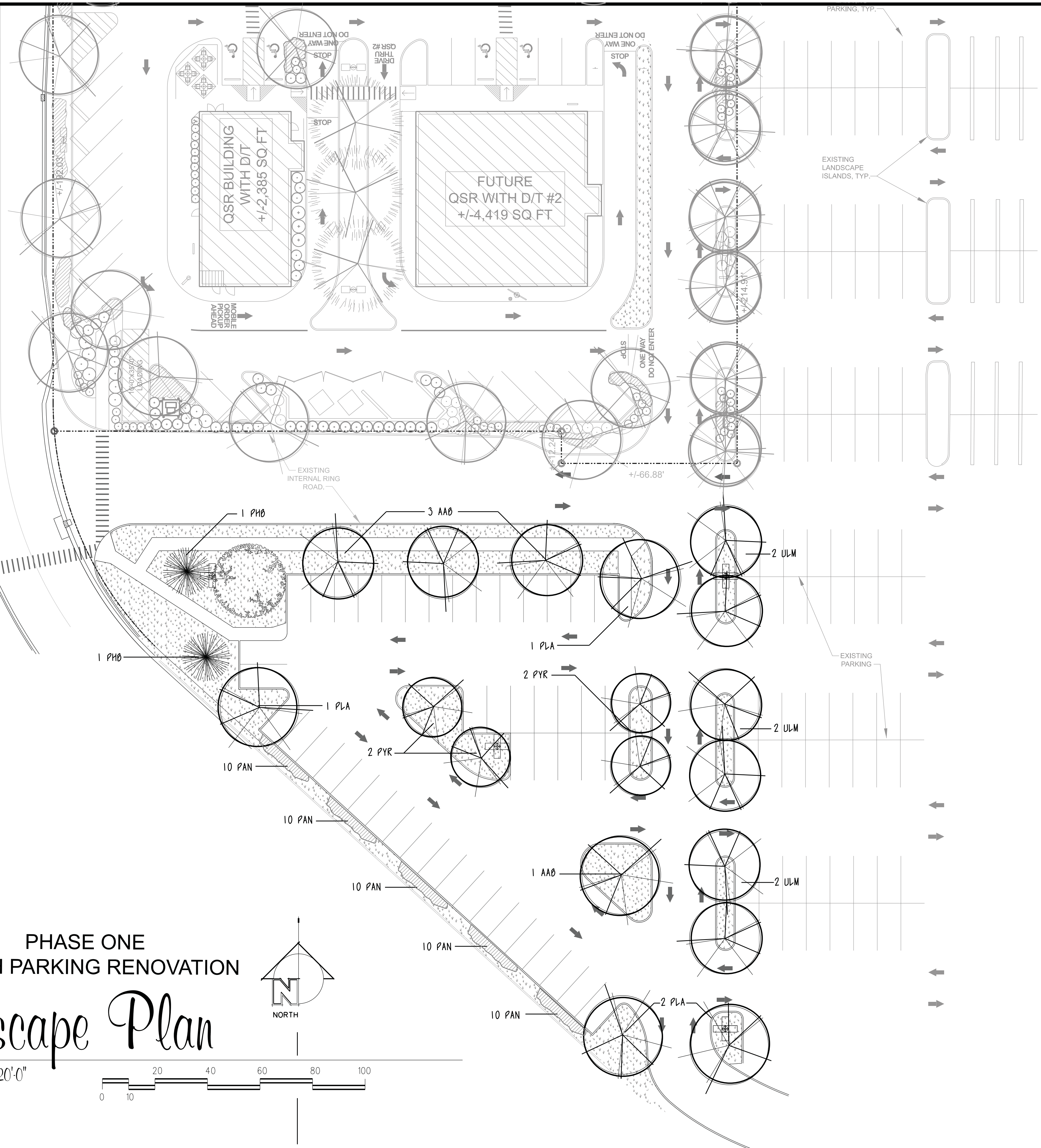
COUTURE
Landscape Construction
515 East Pearl Street, Suite 414H
Chicago, IL 60611
(630) 627-1966
www.couturelandscape.com

MJK Southpoint Shopping Center - Outlot
Palatine Road & Rand Road, Arlington Hts., Illinois

REVISIONS	DATE
06-09-21	07-21-21
10-10-21	
12-02-21	
SCALE	AS SHOWN
DRAWN	PAC
SHEET	L-1
OF SIX	



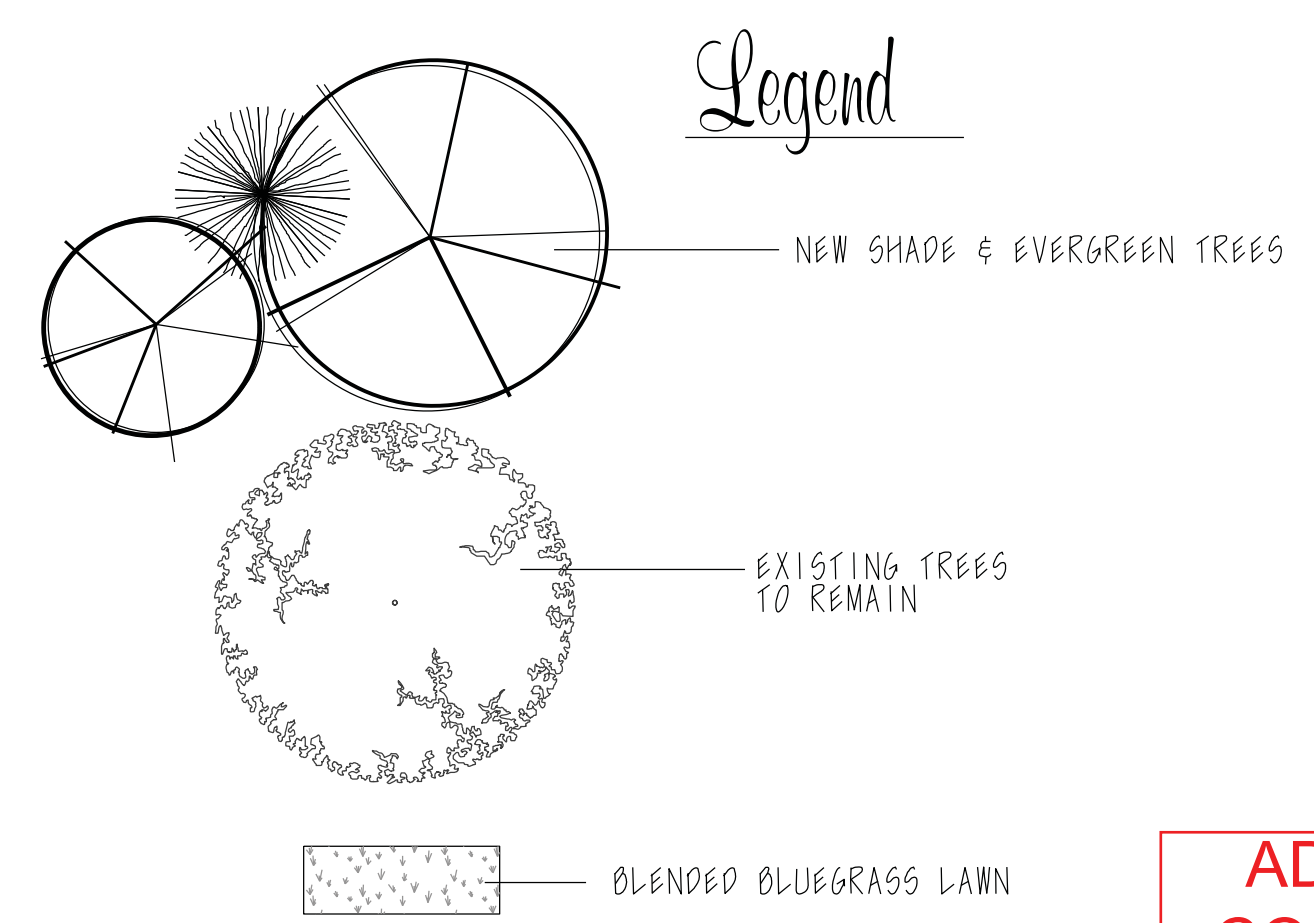
CALL BEFORE YOU DIG
800-892-0123



PLANT LIST

QTY	CODE	PLANT NAME	SIZE
4	AAO	AGER FREEMANI	AUTUMN BLAZE MAPLE 4" GAL
6	ULM	ULMUS SPECIES	FRONTIER HYBRID ELM 4" GAL
4	PLA	PLATANUS AGERIFOLIA	MORTON LONDON PLANETREE 4" GAL
4	PYR	PYRUS CALLERYANA	CHANTICLEER PEAR 4" GAL
2	PHO	PIGEA DENSATA	BLACK HILL SPRUCE 6' HT
50	PAN	PANICUM SPECIES	SWITCHGRASS 1 GAL

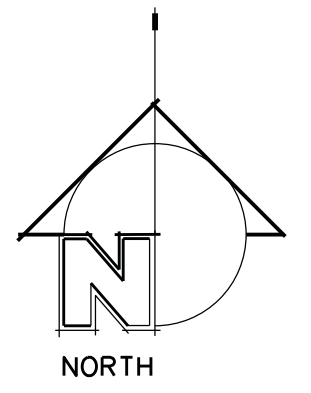
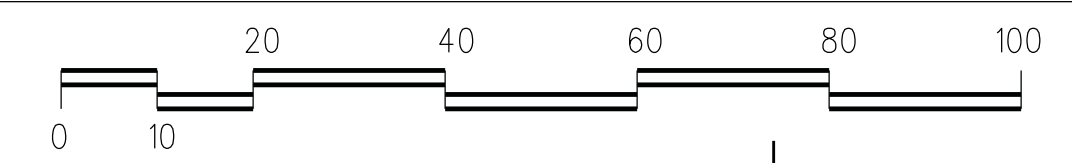
- NOTE:
- QUANTITY LISTS ARE SUPPLIED AS A CONVENIENCE. CONTRACTOR SHALL VERIFY ALL MATERIALS QUANTITIES ON SITE.
 - ALL PLANT MATERIAL TO BE LOCALLY GROWN. ALL PLANT MATERIAL WITH THE EXCEPTION OF LOW TYPE JUNIPER, GROUNDCOVERS, PERENNIALS, SHRUBS UNDER 36" SIZE, BE BALLED AND BURLAPPED "B & B" UNLESS OTHERWISE SPECIFIED. PLANT MATERIAL TO BE GROWN IN ACCORDANCE TO STANDARDS SET BY THE AMERICAN NURSERY AND LANDSCAPE ASSOCIATION. *A.N.L.A.*
 - ALL PLANTINGS SHALL BE WATERED THOROUGHLY IN THE FIRST 24 HOURS AFTER PLANTING. ENSURE ALL AIR POCKETS ARE REMOVED AROUND ROOT BALL.
 - CONTRACTOR TO GUARANTEE PLANT MATERIAL FOR ONE YEAR FROM TIME OF PLANTING.
 - ALL PLANT BED AREAS TO BE MULCHED WITH PREMIUM SHREDDED HARDWOOD MULCH 3" DEEP AND SHALL BE SEPARATED FROM LAWN AREAS WITH A SPADED EDGING. APPLY TREFLAN HERBICIDE PER MANUFACTURER SPECIFICATIONS TO ALL PLANT BED AREAS.
 - ALL NEW LAWN AREAS TO BE A BLENDED BLUEGRASS 500 UNLESS OTHERWISE INDICATED. CONTRACTOR TO MAINTAIN LAWNS UNTIL APPROVAL AND ACCEPTANCE BY OWNERS REPRESENTATIVE. RESTORE ALL OTHER DAMAGED LAWN AREAS DUE TO CONSTRUCTION *V.I.F.*.
 - IT IS CONTRACTORS OPTION TO STAKE TREES, BUT HIS RESPONSIBILITY TO ASSURE PLANTS REMAIN PLUMB UNTIL THE END OF GUARANTEE PERIOD.
 - PLANT SIZES LISTED ARE THE MINIMUM SIZE REQUIRED. PLANTS THAT DO NOT MEET THESE MINIMUM SIZES SHALL BE REJECTED AT CONTRACTORS EXPENSE.
 - NO PLANT SPECIES OR SIZES SHALL BE SUBSTITUTED WITHOUT PRIOR APPROVAL FROM LANDSCAPE ARCHITECT OR OWNERS REPRESENTATIVE.
 - SEE SHEETS L-4, L-5, L-6 FOR ADDITIONAL SPECIFICATIONS AND PLANTING DETAILS.



ADDRESS COMMENTS
ROUND 3
12/22/2021

PHASE ONE SOUTH PARKING RENOVATION Landscape Plan

Scale 1"=20'-0"



Landscape Plans Prepared By:
Paul A. Couture 8/9/21
Paul A. Couture, P.E.L. 157-00328
I.L. License Number 157-00328



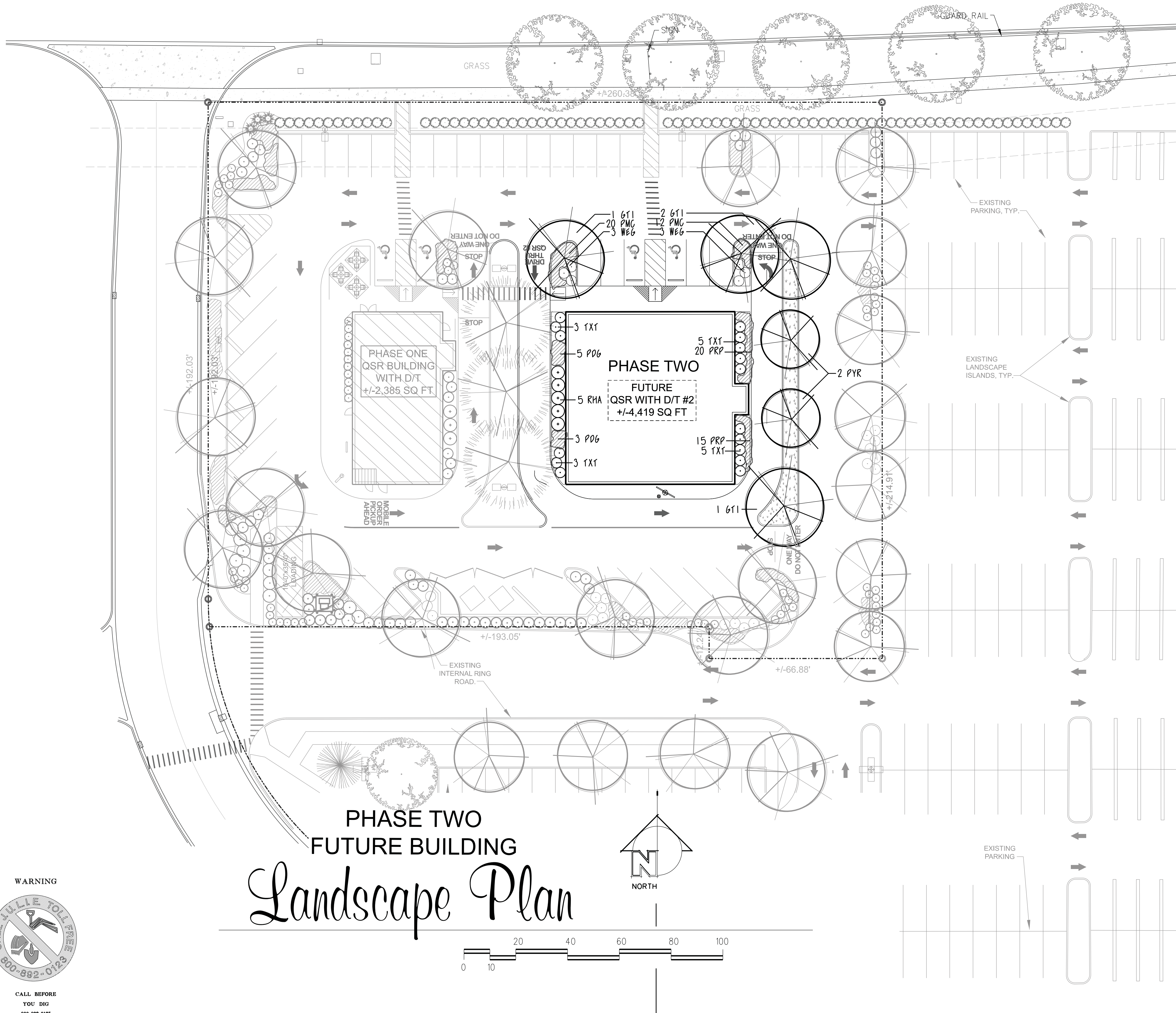
COUTURE
Landscape Construction
Landscape Architects / Contractors
575 East Ford
Jambou, Illinois 62448
www.couturelandscape.com
(630) 627-1966

MJK Southpoint Shopping Center - Outlot
Palatine Road & Rand Road
Arlington Hts. Illinois

REVISIONS	DATE
06-09-21	07-21-21
10-10-21	
2-02-22	
2-21-21	ADD SHADE TREE

SCALE AS SHOWN
DRAWN PAC
SHEET L-2 OF SIX

PALATINE ROAD

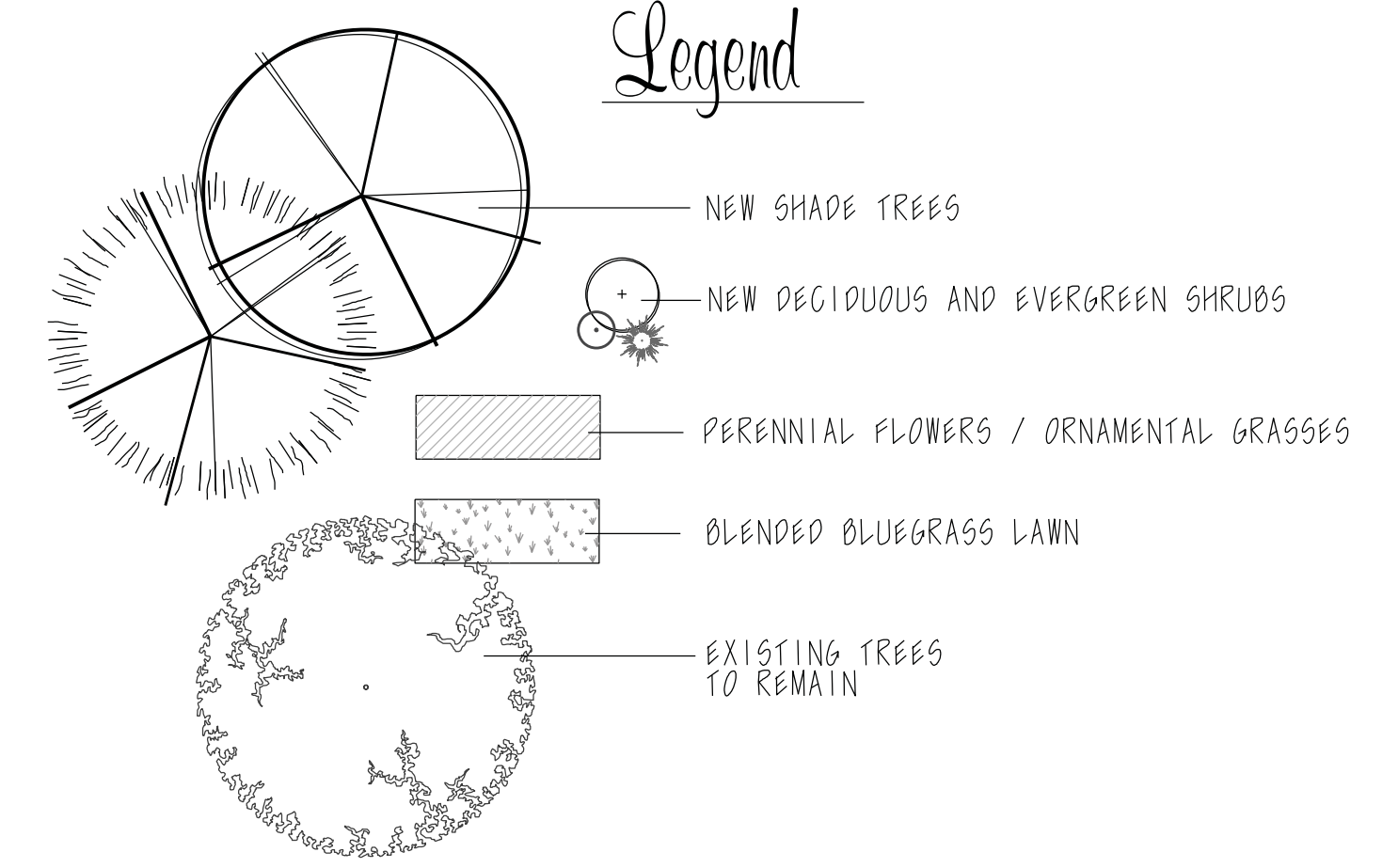


PLANT LIST

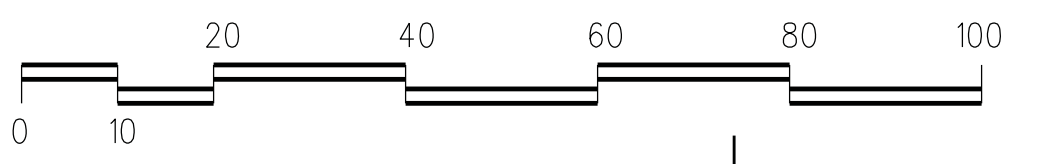
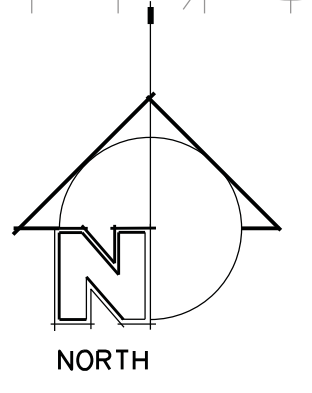
QTY	CODE	PLANT NAME	SIZE	
4	6T1	GLEDTISIA TRIACANTHOS	SKYLINE HONEYLOCUST	2.5" CAL
2	CRP	CARPINUS BETULUS	COLUMNAR HORNOBEAM	2.5" CAL
16	TXT	TAXUS TAUTONI	TAUTON YEW	24"
6	WEG	WEIGELA SPECIES	DARK HORSE WEIGELA	18"
9	RHA	RHUS COPPELIANA	PRAIRIE FLAME SUMAG	3' HT
32	PMG	COREOPSIS VERTIGILLATA	ZAGREB COREOPSIS	1 GAL
8	POG	PENNISETUM HAMLIN	DWARF FOUNTAIN GRASS	1 GAL

- NOTE:
1. QUANTITY LISTS ARE SUPPLIED AS A CONVENIENCE. CONTRACTOR SHALL VERIFY ALL MATERIALS QUANTITIES ON SITE.
 2. ALL PLANT MATERIAL TO BE LOCALLY GROWN. ALL PLANT MATERIAL WITH THE EXCEPTION OF LOW TYPE JUNIPER, GROUNDCOVERS, PERENNIALS, SHRUBS UNDER 36" SIZE, BE BALLED AND BURLAPPED '0 & 0' UNLESS OTHERWISE SPECIFIED. PLANT MATERIAL TO BE GROWN IN ACCORDANCE TO STANDARDS SET BY THE AMERICAN NURSERY AND LANDSCAPE ASSOCIATION. *A.N.L.A.*
 3. ALL PLANTINGS SHALL BE WATERED THOROUGHLY IN THE FIRST 24 HOURS AFTER PLANTING. ENSURE ALL AIR POCKETS ARE REMOVED AROUND ROOT BALL.
 4. CONTRACTOR TO GUARANTEE PLANT MATERIAL FOR ONE YEAR FROM TIME OF PLANTING.
 5. ALL PLANT BED AREAS TO BE MULCHED WITH PREMIUM SHREDDED HARDWOOD MULCH 3" DEEP AND SHALL BE SEPARATED FROM LAWN AREAS WITH A SPADED EDGING. APPLY TREE-PLAN HERBICIDE PER MANUFACTURER SPECIFICATIONS TO ALL PLANT BED AREAS.
 6. ALL NEW LAWN AREAS TO BE A BLENDED BLUEGRASS SOD UNLESS OTHERWISE INDICATED. CONTRACTOR TO MAINTAIN LAWNS UNTIL APPROVAL AND ACCEPTANCE BY OWNERS REPRESENTATIVE. RESTORE ALL OTHER DAMAGED LAWN AREAS DUE TO CONSTRUCTION *V.I.P.*.
 7. IT IS CONTRACTORS OPTION TO STAKE TREES, BUT HIS RESPONSIBILITY TO ASSURE PLANTS REMAIN PLUMB UNTIL THE END OF GUARANTEE PERIOD.
 8. PLANT SIZES LISTED ARE THE MINIMUM SIZE REQUIRED. PLANTS THAT DO NOT MEET THESE MINIMUM SIZES SHALL BE REJECTED AT CONTRACTORS EXPENSE.
 9. NO PLANT SPECIES OR SIZES SHALL BE SUBSTITUTED WITHOUT PRIOR APPROVAL FROM LANDSCAPE ARCHITECT OR OWNERS REPRESENTATIVE.
 10. SEE SHEETS L-4, L-5, L-6 FOR ADDITIONAL SPECIFICATIONS AND PLANTING DETAILS.

Legend

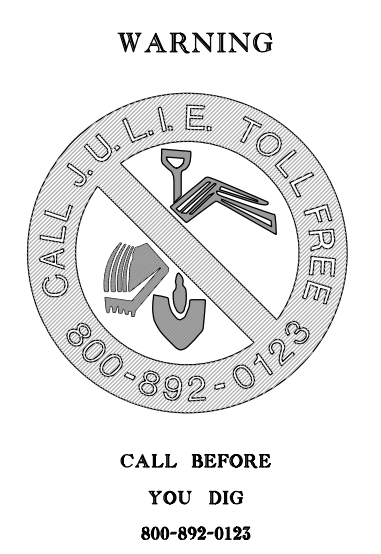


PHASE TWO FUTURE BUILDING Landscape Plan



ADDRESS COMMENTS
ROUND 3
12/22/2021

Landscape Plans Prepared By:
Paul A. Couture 8/9/21
P.A. License Number 157-00328



COUTURE
Landscape Construction
Landscape Architects / Contractors
575 S. Park Road, Suite 444H
Palatine, IL 60067
www.couturelandscape.com
(630) 627-1966

MJK Southpoint Shopping Center - Outlot
Palatine Road & Rand Road
Arlington Hts., Illinois

REVISIONS	DATE
06-09-21	07-21-21
10-10-21	AS SHOWN
12-02-21	DRAWN PAC
SHEET	L-3
OF 51X	

LANDSCAPE SPECIFICATIONS

SECTION 0001 LANDSCAPE WORK

PART 1 GENERAL
1.01 DESCRIPTION
THESE GENERAL REQUIREMENTS APPLY TO ALL LANDSCAPE OPERATIONS. REFER TO SPECIFICATION SECTIONS FOR SPECIFIC GENERAL, PRODUCT, AND EXECUTION REQUIREMENTS.

1.02 QUALITY ASSURANCE
A. COMPLY WITH ALL APPLICABLE LOCAL, STATE AND FEDERAL REQUIREMENTS REGARDING MATERIALS, METHODS OF WORK, AND DISPOSAL OF EXCESS AND WASTE MATERIALS.
B. OBTAIN AND PAY FOR ALL REQUIRED INSPECTIONS, PERMITS, AND FEES. PROVIDE NOTICES REQUIRED BY GOVERNMENTAL AUTHORITIES.
C. OWNER SHALL APPOINT A QUALIFIED REPRESENTATIVE TO OVERSEE THE WORK AND ASSURE ITS ADHERENCE TO THE PLANS AND THESE SPECIFICATIONS. HENCEFORTH, THIS PERSON SHALL BE DESIGNATED AS OWNERS REPRESENTATIVE.
D. CONTRACTOR TO HAVE AN EXPERIENCED ENGLISH SPEAKING SUPERVISOR / FOREMAN ONSITE AT ALL TIMES THAT CAN ADEQUATELY COMMUNICATE WITH OWNERS REPRESENTATIVE WHEN NECESSARY, AND HAVE EXPERIENCED INSTALLERS WHO HAVE COMPLETED LANDSCAPING WORK SIMILAR IN MATERIAL, DESIGN, AND EXTENT AS TO THAT INDICATED FOR THIS PROJECT WITH A RECORD OF SUCCESSFUL LANDSCAPE ESTABLISHMENT.
E. CONTRACTORS WORKFORCE SHALL BE KNOWLEDGEABLE AND OR MAKE THEMSELVES KNOWLEDGEABLE OF ALL SAFETY REGULATIONS AND REQUIREMENTS PERTAINING TO THIS PROJECT INCLUDING WEARING ALL PROTECTIVE GEAR NEEDED TO COMPLY WITH THESE REQUIREMENTS. WORKMAN NOT IN COMPLIANCE CAN AND WILL BE DENIED ACCESS TO THE WEBSITE BY THE GENERAL CONTRACTOR . A SAFETY CLASS FOR WORKERS MAY BE REQUIRED BY THE GENERAL CONTRACTOR.

1.03 PROJECT CONDITIONS
A. LOCATE AND IDENTIFY EXISTING UNDERGROUND AND OVERHEAD SERVICES AND UTILITIES WITHIN CONTRACT LIMIT WORK AREAS. CONTACT UTILITY LOCATE AT 811. PROVIDE ADEQUATE MEANS OF PROTECTION OF UTILITIES AND SERVICES DESIGNATED TO REMAIN. REPAIR UTILITIES DAMAGED DURING SITE WORK OPERATIONS AT CONTRACTORS EXPENSE.
B. WHEN UNCHARTED OR INCORRECTLY CHARTED UNDERGROUND PIPING OR OTHER UTILITIES AND SERVICES ARE ENCOUNTERED DURING SITE WORK OPERATIONS, NOTIFY THE APPLICABLE UTILITY COMPANY IMMEDIATELY TO OBTAIN PROCEDURE DIRECTIONS. COOPERATE WITH THE APPLICABLE UTILITY COMPANY IN MAINTAINING ACTIVE SERVICES IN OPERATION.
C. LOCATE, PROTECT, AND MAINTAIN BENCHMARKS, MONUMENTS, CONTROL POINTS AND PROJECT ENGINEERING REFERENCE POINTS. RE-ESTABLISH DISTURBED OR DESTROYED ITEMS AT CONTRACTORS EXPENSE.
D. OBTAIN GOVERNING AUTHORITIES WRITTEN PERMISSION WHEN REQUIRED TO CLOSE OR OBSTRUCT STREET, WALKS AND ADJACENT FACILITIES. PROVIDE ALTERNATE ROUTES AROUND CLOSED OR OBSTRUCTED TRAFFIC WAYS WHEN REQUIRED BY GOVERNING AUTHORITIES.
E. CONTROL DUST CAUSED BY THE WORK. DAMPEN SURFACES AS REQUIRED. COMPLY WITH POLLUTION CONTROL REGULATIONS OF GOVERNING AUTHORITIES.
F. PROTECT EXISTING BUILDINGS, PAVING, AND OTHER SERVICES OR FACILITIES ON SITE AND ADJACENT TO THE SITE FROM DAMAGE CAUSED BY WORK OPERATIONS. COST OF REPAIR AND RESTORATION OF DAMAGED ITEMS AT CONTRACTORS EXPENSE.
G. PROTECT AND MAINTAIN STREETLIGHTS, UTILITY POLES AND SERVICES, TRAFFIC SIGNAL CONTROL BOXES, CURB BOXES, VALVES AND OTHER SERVICES, EXCEPT ITEMS DESIGNATED FOR REMOVAL. REMOVE OR COORDINATE THE REMOVAL OF TRAFFIC SIGNS, PARKING METERS AND POSTAL MAILBOXES WITH THE APPLICABLE GOVERNMENTAL AGENCY.
H. AT THE CONCLUSION OF EACH WORK DAY, THE CONTRACTOR IS RESPONSIBLE FOR LEAVING THE SITE IN A CLEAN AND SAFE CONDITION.

PART 2 PRODUCTS
2.01 MATERIALS AND EQUIPMENT
A. MATERIALS AND EQUIPMENT: AS SELECTED BY CONTRACTOR, EXCEPT AS INDICATED.
B. EQUIPMENT: 100T STANDARD SPECIFICATIONS FOR ROAD AND BRIDGE CONSTRUCTION
C. MATERIALS: 100T STANDARD SPECIFICATIONS FOR ROAD AND BRIDGE CONSTRUCTION

PART 3 EXECUTION
3.01 PREPARATION
A. EXAMINE THE AREAS AND CONDITIONS UNDER WHICH WORK IS TO BE PERFORMED. DO NOT PROCEED WITH THE WORK UNTIL UNSATISFACTORY CONDITIONS ARE CORRECTED.
B. CONSULT THE AVAILABLE RECORDS AND DRAWINGS OF ADJACENT WORK AND OF EXISTING SERVICES AND UTILITIES WHICH MAY AFFECT WORK OPERATIONS, AS PROVIDED BY OWNER.

END OF SECTION 0001

SECTION 0002 TREE AND SHRUB PLANTING

PART 1 GENERAL
1.01 DESCRIPTION
A. PROVIDE TREES AND SHRUBS AS SHOWN AND SPECIFIED. THE WORK INCLUDES:
1. SOIL PREPARATION.
2. TREES, SHRUBS.
3. PLANTING MIXES.
4. MULCH AND PLANTING ACCESSORIES.
5. EXISTING PLANT RELOCATION.
B. RELATED WORK:
1. SECTION 00000: EARTHWORK.
2. SECTION 00004: SEEDING.
3. SECTION 00005: SOODING.
4. SECTION 00003: PERENNIAL , ORNAMENTAL GRASS, GROUNDCOVER PLANTING.

1.02 QUALITY ASSURANCE
A. COMPLY WITH SECTION 00001 REQUIREMENTS.
B. COMPLY WITH SECTION 00003 REQUIREMENTS WHEN APPLICABLE .
C. PROVIDE STOCK TREE TO BOTANICAL NAME. DO NOT SUBSTITUTE WITHOUT PERMISSION OF OWNER OR OWNERS REPRESENTATIVE. NONCONFORMING PLANTS WILL BE REJECTED AT CONTRACTORS EXPENSE.
D. COMPLY WITH SIZING AND GRADING STANDARDS OF THE LATEST EDITION OF 'AMERICAN STANDARD FOR NURSERY STOCK'. A PLANT SHALL BE DIMENSIONED AS IT STANDS IN ITS NATURAL POSITION. NONCONFORMING PLANTS WILL BE REJECTED AT CONTRACTORS EXPENSE.
E. ALL PLANTS SHALL BE LOCALLY GROWN UNDER CLIMATIC AND SOIL CONDITIONS SIMILAR TO THOSE IN THE LOCALITY OF THE PROJECT.
F. STOCK FURNISHED SHALL BE AT LEAST THE MINIMUM SIZE INDICATED. LARGER STOCK IS ACCEPTABLE WITHIN REASON, AT NO ADDITIONAL COST TO OWNER. ROOT SYSTEMS MUST MEET ANLA STANDARDS AS SPECIFIED. PLANTS SHOULD NOT BE ALTERED BY PRUNING OR OTHER MEANS TO MEET SPECIFICATIONS.
G. PROVIDE 'SPECIMEN' PLANTS WITH A SPECIAL HEIGHT, SHAPE OR CHARACTER OF GROWTH. SPECIMEN TREES OR SHRUBS MAY BE TAGGED AT THE SOURCE OF SUPPLY. THE OWNERS REPRESENTATIVE MAY CHOOSE TO INSPECT SPECIMEN SELECTIONS AT THE SOURCE OF SUPPLY FOR SUITABILITY AND ADAPTED TO SELECTED LOCATION. WHEN SPECIMEN PLANTS CANNOT BE PURCHASED LOCALLY, PROVIDE SUFFICIENT PHOTOGRAPHS OF THE PROPOSED SPECIMEN PLANTS FOR APPROVAL. IF SO REQUESTED, NO 'PARK GRADE' MATERIAL WILL BE ACCEPTED.
H. PLANTS MAY BE INSPECTED AND APPROVED AT THE PLACE OF GROWTH, FOR COMPLIANCE WITH SPECIFICATION REQUIREMENTS FOR QUALITY, SIZE AND VARIETY.

CONTINUE SECTION 0002 TREE AND SHRUB PLANTING

1.03 SUBMITTALS
A. SUBMIT THE FOLLOWING MATERIAL SAMPLES, IF REQUESTED:
1. MULCH - BULK OR BAGGED.
2. DECORATIVE STONE OR GRAVEL - BAG OR BULK
B. SUBMIT THE FOLLOWING MATERIALS CERTIFICATION, IF REQUESTED:
1. TOPSOIL SOURCE AND PH VALUE.
2. PEAT MOSS, COMPOST, OR OTHER ORGANIC SOIL AMENDMENTS
3. PLANT FERTILIZER.

1.04 DELIVERY, STORAGE, AND HANDLING
A. DELIVER FERTILIZER MATERIALS IN ORIGINAL, UNOPENED AND UNDAMAGED CONTAINERS SHOWING WEIGHT, ANALYSIS, AND NAME OF MANUFACTURER. STORE IN MANNER TO PREVENT WETTING AND DETERIORATION.
B. TAKE ALL PRECAUTIONS CUSTOMARY IN GOOD NURSERY PRACTICE TO PREPARE PLANTS FOR TRANSPORT. WORKMANSHIP, WHICH FAILS TO MEET THE HIGHEST STANDARDS, WILL BE REJECTED. SPRAY DECIDUOUS PLANTS IN FOLIAGE WITH AN APPROVED ANTI- DESICCANT IMMEDIATELY BEFORE DIGGING TO PREVENT DEHYDRATION WHEN IN LEAF. DIG, PACK, TRANSPORT, AND HANDLE PLANTS WITH CARE TO ENSURE PROTECTION AGAINST INJURY.
C. COVER PLANTS TRANSPORTED ON OPEN VEHICLES WITH A PROTECTIVE COVERING TO PREVENT WINDBURN.
D. MOISTEN ALL BURLAP ROOT BALL BEFORE TRANSPORTING. PREVENT SURFACE FROM DRYING DURING TRANSPORTING

1.05 PROJECT CONDITIONS
A. WORK NOTIFICATION: NOTIFY OWNERS REPRESENTATIVE AT LEAST TWO (2) WORKING DAYS PRIOR TO INSTALLATION OF PLANT MATERIAL.
B. PROTECT EXISTING UTILITIES, PAVING, AND OTHER FACILITIES FROM DAMAGE CAUSED BY LANDSCAPING OPERATIONS. CALL 811 TO MARK UNDERGROUND UTILITIES A MINIMUM OF 48 HOURS BEFORE DIGGING.
C. A COMPLETE LIST OF PLANTS, INCLUDING A SCHEDULE OF SIZES, QUANTITIES, AND OTHER REQUIREMENTS IS SHOWN ON THE DRAWINGS. IN THE EVENT THAT QUANTITY DISCREPANCIES OR MATERIAL OMISSIONS OCCUR IN THE PLANT MATERIALS LIST, THE PLANTING PLANS SHALL GOVERN. PAYMENT SHALL BE BASED ON ACTUAL INSTALLED PLANT COUNT.

1.06 WARRANTY
A. WARRANT PLANT MATERIAL TO REMAIN ALIVE AND BE IN A HEALTHY, VIGOROUS CONDITION FOR A PERIOD OF ONE (1) YEAR AFTER ACCEPTANCE, PROVIDED PLANTS ARE GIVEN PROPER CARE BY OWNER DURING THIS PERIOD.
1. CONTRACTOR TO CALL FOR FINAL INSPECTION OF PLANTS.
2. IT IS THE RESPONSIBILITY OF THE CONTRACTOR TO INSPECT THE WATERING, CULTIVATION AND OTHER MAINTENANCE OPERATIONS PERFORMED BY THE OWNER DURING THE WARRANTY PERIOD.
3. ANY METHODS OR PRACTICES WHICH THE CONTRACTOR CONSIDERS UNSATISFACTORY AND NOT IN ACCORD WITH STANDARD HORTICULTURAL PRACTICES SHALL BE REPORTED TO THE OWNER IN WRITING.
B. REMOVE AND IMMEDIATELY REPLACE ALL PLANTS, AS DETERMINED BY THE OWNERS REPRESENTATIVE, TO BE UNSATISFACTORY DURING THE INITIAL PLANTING INSTALLATION.
C. REPLACE ONCE, IN ACCORDANCE WITH THE DRAWINGS AND SPECIFICATIONS, ALL PLANTS THAT ARE DEAD OR, AS DETERMINED BY OWNER'S REPRESENTATIVE, ARE IN A SEVERELY UNHEALTHY CONDITION WITHIN WARRANTY PERIOD. REPLACEMENTS TO BE INSTALLED AT NEXT BEST PLANTING SEASON.
D. WARRANTY SHALL NOT INCLUDE DAMAGE OR LOSS OF TREES, PLANTS, OR GROUND COVERS CAUSED BY FIRES, FLOODS, DROUGHT, FREEZING RAINS, LIGHTNING STORMS, OR WINDS OVER 75 MILES PER HOUR, WINTER KILL CAUSED BY EXTREME COLD AND SEVERE WINTER CONDITIONS NOT TYPICAL OF PLANTING AREAS; ACTS OF VANDALISM, ANIMAL DESTRUCTION OR NEGLIGENCE ON THE PART OF THE OWNER. ANY REPLACEMENT ATTRIBUTED TO THESE CAUSES MUST BE IN ADDITION TO THE CONTRACT AMOUNT.

PART 2 PRODUCTS

2.01 MATERIALS
A. PLANTS: PROVIDE PLANTS TYPICAL OF THEIR SPECIES OR VARIETY; WITH NORMALLY DEVELOPED BRANCHES AND VIGOROUS ROOT SYSTEMS. PROVIDE ONLY SOUND, HEALTHY, VIGOROUS PLANTS FREE FROM DEFECTS; DISFIGURING KNOTS; SUNSCALD INJURIES; FROST CRACKS; ABRASIONS OF THE BARK; PLANT DISEASES; INSECT EGGS, BORERS; AND ALL FORMS OF INFESTATION.
1. DIE BALLED AND BURLAPPED PLANTS WITH FIRM, NATURAL BALLS OF GARTH OF SUFFICIENT DIAMETER AND DEPTH AS NECESSARY FOR FULL RECOVERY OF THE PLANT. PROVIDE BALL SIZES COMPLYING WITH THE LATEST EDITION OF THE 'AMERICAN STANDARD FOR NURSERY STOCK'. CRACKED OR MUSHROOMED BALLS ARE NOT ACCEPTABLE.
2. CONTAINER-GROWN STOCK SHALL HAVE GROWN IN A CONTAINER FOR SUFFICIENT LENGTH OF TIME FOR THE ROOT SYSTEM TO HAVE DEVELOPED TO HOLD ITS SOIL TOGETHER, FIRM AND WHOLE.
A. NO PLANTS SHALL BE LOOSE IN THE CONTAINER.
B. CONTAINER STOCK SHALL NOT BE POT BOUND.
3. IF THE USE OF LARGER THAN SPECIFIED PLANTS IS ACCEPTABLE, INCREASE THE SPREAD OF ROOTS OR ROOT BALL IN PROPORTION TO THE SIZE OF THE PLANT.
1. THE HEIGHT OF THE TREES, MEASURED FROM THE CROWN OF THE ROOTS TO THE TOP OF THE TOP BRANCH, SHALL NOT LESS THAN THE MINIMUM SIZE AND VARIETY DESIGNATED IN THE PLANT LIST AND ACCORDING TO THE ANLA STANDARDS FOR NURSERY STOCK.
5. SHRUBS AND SMALL PLANTS SHALL MEET THE REQUIREMENTS FOR SPREAD AND/OR HEIGHT INDICATED IN THE PLANT LIST AND BE IN ACCORDANCE WITH ANLA STANDARDS.

2.02 ACCESSORIES
A. TOPSOIL FOR PLANTING BEDS: FERTILE, FRIABLE, NATURAL TOPSOIL WITHOUT ADMIXTURE OF SUBSOIL MATERIAL, OBTAINED FROM A WELL-DRAINED ARABLE SITE, REASONABLY FREE FROM CLAY, LUMPS, COARSE SANDS, STONES, PLANTS, ROOTS, STICKS, AND OTHER FOREIGN MATERIALS; WITH ACIDITY RANGE OF BETWEEN PH 5.5 TO 6.0 AND BE TYPICAL OF THE AREA.
1. IDENTIFY SOURCE LOCATION OF TOPSOIL PROPOSED FOR USE ON THE PROJECT.
2. PROVIDE TOPSOIL FREE OF SUBSTANCES HARMFUL TO THE PLANTS WHICH WILL BE GROWN IN THE SOIL.
B. PEAT MOSS: BROWN TO BLACK IN COLOR, WEEP AND SEED FREE GRANULATED RAW PEAT OR BALED PEAT, CONTAINING NOT MORE THAN 9% MINERAL ON A DRY BASIS.
C. ORGANIC MATTER: ORGANIC MATTER CAN BE FROM PEAT MOSS, COMPOST, OR LOCALLY AVAILABLE ORGANIC WASTE. ORGANIC MATTER SHOULD BE WELL COMPOSTED, FREE FROM DEBRIS, WEEP SEEDS, AND INSECTS OR DISEASES WHICH MAY BE HARMFUL TO THE INTENDED PLANTING.
D. MULCH: DARK PREMIUM GRADE ; DOUBLE PROCESSED SHREDED HARDWOOD UNLESS OTHERWISE APPROVED BY OWNERS REPRESENTATIVE.
E. FERTILIZER:
1. PLANT FERTILIZER: COMMERCIAL TYPE APPROVED BY THE OWNERS REPRESENTATIVE, CONTAINING 10% NITROGEN, 10% PHOSPHORIC ACID AND 10% POTASH BY WEIGHT OR EQUIVALENT IN A SLOW RELEASE GRANULAR FORM.
F. PRE EMERGENT HERBICIDES: TRIFLAP, RONSTAR-6 OR APPROVED EQUIVALENT APPLIED IN ACCORDANCE WITH MANUFACTURERS INSTRUCTIONS TO ALL PLANT BED AREAS UNLESS OTHERWISE INDICATED.
G. ANTI-DESICCANT: PROTECTIVE FILM EMULSION PROVIDING A PROTECTIVE FILM OVER PLANT SURFACES; PERMEABLE TO PERMIT TRANSPIRATION. MIXED AND APPLIED IN ACCORDANCE WITH MANUFACTURERS INSTRUCTIONS.
H. WIRE: IRON OR OTHER METHODS OF TRANSPORTATION TO BE FURNISHED BY CONTRACTOR. WATER TO BE PROVIDED BY THE OWNER AT THE SITE.
1. STAKES FOR STAKING: HARDWOOD, 2" X 2" 6'-0" LONG 2x4 PINE IS PERMISSIBLE.
J. STAKES FOR GUYING: HARDWOOD, 2" X 2" X 24" LONG OR 'DUCKBILL' OR 'SPEED STAKE' EARTH ANCHORS.
K. GUYING/STAKING WIRE: 12- OR 14-GAUGE GALVANIZED WIRE.
1. TURNBUCKLES: GALVANIZED STEEL OF SIZE AND GAUGE REQUIRED TO PROVIDE TENSILE STRENGTH EQUAL TO THAT OF THE WIRE. TURNBUCKLE OPENINGS SHALL BE AT LEAST 3".
L. STAKING AND GUYING HOSE: TWO-PLY, REINFORCED GARDEN HOSE NOT LESS THAN 1/2" INSIDE DIAMETER. SHALL BE UNIFORM IN COLOR.
M. PLASTIC GUY MATERIAL NO LESS THAN 1/4". SHALL BE UNIFORM IN COLOR AND LEVEL AS APPLIED.
N. TWINE: TWO-PLY JUTE MATERIAL.
O. WEEP CONTROL BARRIER: IF INDICATED; ROT RESISTANT POLYPROPYLENE FABRIC OR EQUIVALENT, WATER AND AIR PERMEABLE.

PART 3 EXECUTION

3.01 INSPECTION
A. EXAMINE PROPOSED PLANTING AREAS AND CONDITIONS BEFORE INSTALLATION. DO NOT START PLANTING WORK UNTIL UNSATISFACTORY CONDITIONS ARE CORRECTED.

3.02 PREPARATION
A. COORDINATION AND SCHEDULING - TIME OF PLANTING
COORDINATE INSTALLATION OF PLANTING MATERIALS DURING NORMAL PLANTING SEASONS FOR EACH TYPE OF PLANT MATERIAL REQUIRED. NORMAL SEASONS FOR THE INSTALLATION OF PLANT MATERIAL SHALL BE AS FOLLOWS:
1. SPRING PLANTING: PERFORM FROM TIME SOIL BECOMES WORKABLE TO JUNE 15. INSTALL EVERGREEN TREES PRIOR TO NEW GROWTH BEGINNING IN THE SPRING.
2. FALL PLANTING: PERFORM FROM SEPTEMBER 1 TO NOVEMBER 15. PERENNIALS AND GROUND COVERS SHALL BE COMPLETED BY OCTOBER 15.
3. SUMMER PLANTING: PLANTING PERFORMED BETWEEN JUNE 15 AND AUGUST 31, SHALL BE CONSIDERED UNSEASONABLE AND WILL REQUIRE OWNERS APPROVAL.

B. PLANTING SHALL BE PERFORMED ONLY BY EXPERIENCED WORKMEN FAMILIAR WITH PLANTING PROCEDURES UNDER THE SUPERVISION OF A QUALIFIED SUPERVISOR.
C. LOCATE PLANTS AS INDICATED ON DRAWINGS. IF OBSTRUCTIONS ARE ENCOUNTERED THAT ARE NOT SHOWN ON THE DRAWINGS, DO NOT PROCEED WITH PLANTING OPERATIONS UNTIL OWNER'S REPRESENTATIVE HAS SELECTED ALTERNATE PLANT LOCATIONS.

D. EXCAVATE CIRCULAR PLANT PITS WITH VERTICAL SIDES, EXCEPT FOR PLANTS SPECIFICALLY INDICATED TO BE PLANTED IN BEDS. PROVIDE SHRUB PITS AT LEAST TWICE AS WIDE AS THE ROOT SYSTEM AND 24" GREATER FOR TREES. DEPTH OF PIT SHALL BE NO GREATER THAN THE ROOT BALL DEPTH. SCARIFY BOTTOM OF THE PIT. REMOVE EXCESS EXCAVATED MATERIALS FROM THE SITE.

E. PLANTING MIXTURE FOR USE AROUND THE BALLS AND ROOTS OF TREES AND SHRUBS SHALL CONSIST OF FIVE (5) PARTS EXISTING SOIL TO ONE (1) PART PEAT MOSS AND 1/2. PLANT FERTILIZER FOR EACH CUBIC YARD OF MIXTURE OR EQUIVALENT. BAGGED DARK PROFESSIONAL MIXES ARE AN EQUIVALENT SUBSTITUTE FOR PEAT MOSS.

3.03 INSTALLATION
A. SET PLANT MATERIAL IN THE PLANTING PIT TO PROPER GRADE AND ALIGNMENT. SET PLANTS UPRIGHT, PLUM AND FACED TO GIVE THE BEST APPEARANCE OR RELATIONSHIP TO EACH OTHER OR ADJACENT STRUCTURE. SET PLANT MATERIAL NO LOWER THAN THE FINISH GRADE OR 2"-3" ABOVE FINISHED GRADE. NO FILLING WILL BE PERMITTED AROUND TRUNKS OR STEMS. BACK FILL THE PIT WITH EXISTING SOIL OR APPROVED TOP SOIL OR MIX. FORM A RING OF SOIL AROUND THE EDGE OF EACH PLANTING PIT TO RETAIN WATER.
B. AFTER PLANTS ARE SET, MIDDLE PLANTING SOIL MIXTURE AROUND BASES OF BALLS AND FILL ALL VOIDS.
1. REMOVE ALL SYNTHETIC BURLAP AND ROPES, AND WIRES FROM THE COLLAR OF BALLS.
C. SPACE PLANTS IN ACCORDANCE WITH SCALED DRAWINGS.
D. WATERING: WATER PLANTING THOROUGHLY TO PULL SOILS AGAINST ROOT BALL AND SETTLE AIR POCKETS. ADDITIONAL SOIL MAY BE NEEDED, WATER AGAIN TO ENSURE COMPLETE COMPACTION.

E. MULCHING: TREES AND SHRUBS SHALL HAVE MULCH APPLIED IMMEDIATELY AFTER PLANTING. AFTER WATERING, RAKE MULCH TO PROVIDE A UNIFORM FINISHED SURFACE.
1. MULCH TREES AND SHRUBS WITH REQUIRED MULCHING MATERIAL 3"-4"
2. MULCH PERENNIAL BEDS 2- 3" DEEP
3. MULCH GROUND COVER BEDS TO A DEPTH OF 1-2" (NO MORE THAN 2") BEFORE INSTALLING GROUND COVER PLANTS. BRUSH MULCH OFF OF FOLIAGE.
F. WRAPPING, GUYING, STAKING: IT IS THE CONTRACTORS TO OPTION TO STAKE TREES, BUT HIS RESPONSIBILITY TO ASSURE PLANTS REMAIN PLUMB UNTIL END OF THE GUARANTEE PERIOD.
1. WRAPPING SHOULD BE DONE ONLY ON AN AS NEEDED BASIS.
2. STAKING/GUYING (IF NEEDED)
A. STAKE/GUY SHOULD ONLY BE USED WHEN TREES ARE LOOSE OR WEAK STEMMED. SEE STAKING DETAILS ON THE DRAWINGS

G. PRUNING:
1. REMOVE OR CUT BACK BROKEN, DAMAGED AND ASYMMETRICAL GROWTH OF NEW WOOD.
2. UNLESS OTHERWISE DIRECTED, PRUNE EVERGREENS ONLY TO REMOVE BROKEN OR DAMAGED BRANCHES.

H. EXISTING PLANT RELOCATION:
1. TRANSPLANT TREES AND SHRUBS DESIGNATED FOR RELOCATION TO LOCATIONS SHOWN ON THE DRAWINGS. PRUNE, DIG, BALL AND BURLAP, MOVE AND PLANT IN ACCORDANCE WITH SPECIFIED TREE PLANTING REQUIREMENTS.
2. PRUNE, DIG, BALL AND BURLAP, AND MOVE DESIGNATED TREES FOR RELOCATION TO THE DESIGNATED PLANT STORAGE AREA FOR HEELING-IN OF MATERIALS UNTIL FINAL PLANTING AREAS ARE PREPARED, IF REQUIRED.
A. MAINTAIN PLANTS IN STORAGE AREAS BY BRACING PLANTS IN VERTICAL POSITION AND SETTING BALLS IN AN ENCLOSED BERM OF TOPSOIL OR DARK. WATER AS REQUIRED TO MAINTAIN ADEQUATE ROOT MOISTURE.
B. RE-BURLAP PLANT BALLS IF REQUIRED BEFORE FINAL TRANSPLANTING OPERATIONS.
C. MOVE TO FINAL LOCATIONS SHOWN ON THE DRAWINGS AND PLANT IN ACCORDANCE WITH SPECIFIED TREE PLANTING REQUIREMENTS.
3. TRANSPLANTS ARE NOT UNDER WARRANTY UNLESS INDICATED.

3.04 MAINTENANCE
A. MAINTENANCE OF INSTALLED AND ACCEPTED PLANTINGS WILL BE PERFORMED BY THE OWNER.
B. CONTRACTORS MAINTENANCE SHALL INCLUDE PRUNING, CULTIVATING, WATERING, WEEDING, AND APPLICATION OF APPROPRIATE INSECTICIDES AND FUNGICIDES NECESSARY TO MAINTAIN PLANTS FREE OF INSECTS AND DISEASE UNTIL ACCEPTANCE.
1. RE-SET SETTLED PLANTS TO PROPER GRADE AND POSITION. RE-STORE PLANTING SAUGER AND ADJACENT MATERIAL AND REMOVE DEAD MATERIAL.
2. TIGHTEN AND REPAIR GUY WIRES AND STAKES AS REQUIRED, ONLY IF ORIGINALLY NEEDED.
3. CORRECT DEFECTIVE WORK AS SOON AS POSSIBLE AFTER DEFICIENCIES BECOME APPARENT AND WEATHER AND SEASON PERMIT.
4. WATER ALL PLANT MATERIAL AS NECESSARY .

3.05 ACCEPTANCE
A. PLANTED AREAS WILL BE INSPECTED AT COMPLETION OF INSTALLATION AND ACCEPTED SUBJECT TO COMPLIANCE WITH SPECIFIED MATERIALS AND INSTALLATION REQUIREMENTS.
B. INSPECTION UPON CONTRACTORS REQUEST TO DETERMINE ACCEPTANCE OF PLANTED AREAS WILL BE MADE BY THE OWNERS REPRESENTATIVE.
1. PLANTED AREAS WILL BE ACCEPTED PROVIDED ALL REQUIREMENTS HAVE BEEN COMPLIED WITH AND PLANT MATERIALS ARE ALIVE AND IN A HEALTHY, VIGOROUS CONDITION.
C. SECTIONS OF THE WORK MAY BE ACCEPTED WHEN COMPLETE UPON AGREEMENT OF THE OWNERS REPRESENTATIVE AND THE CONTRACTOR.
D. UPON ACCEPTANCE, THE OWNER WILL ASSUME PLANT MAINTENANCE.

3.06 CLEANING
A. PERFORM CLEANING DURING INSTALLATION AND UPON COMPLETION OF THE WORK. REMOVE FROM SITE ALL EXCESS MATERIALS, SOIL, DEBRIS, AND EQUIPMENT. REPAIR DAMAGE RESULTING FROM PLANTING OPERATIONS.

END OF SECTION 0002

ADDRESS COMMENTS
ROUND 3
12/22/2021

COUTURE
© All Rights Reserved ©
Landscape Construction
The Office
975 South Road
Arlington Hills, IL 60015
(630) 627-1964
www.couturelandscape.com

MJK Southpoint Shopping Center - Outlot
Palatine Road & Rand Road
Arlington Hts, Illinois

REVISIONS
06-09-21

DATE:
07-21-21

SCALE
AS SHOWN

DRAWN
PAC

SHEET
L-4

OF SIX

LANDSCAPE SPECIFICATIONS

SECTION 0003

PERENNIALS - ORNAMENTAL GRASSES - GROUNDCOVER PLANTING

PART 1 GENERAL

1.01 DESCRIPTION

- A. PROVIDE PERENNIALS, ORNAMENTAL GRASSES AND GROUND COVERS AS SHOWN AND SPECIFIED. THE WORK INCLUDES:
 1. SOIL PREPARATION.
 2. PERENNIAL, ORNAMENTAL GRASSES AND GROUNDCOVERS.
 3. PLANTING MIXES.
 4. MULCH AND PLANTING ACCESSORIES.
- B. RELATED WORK:
 1. SECTION 00000: EARTHWORK.
 2. SECTION 00004: SEEDING.
 3. SECTION 00005: SODDING.
 4. SECTION 00002: TREE AND SHRUB PLANTING.

1.02 QUALITY ASSURANCE

- A. COMPLY WITH SECTION 00001 REQUIREMENTS.
- B. LANDSCAPE CONTRACTORS SHALL PROVIDE STOCK TRUE TO BOTANICAL NAME AND LEGIBLY TAGGED. DO NOT SUBSTITUTE WITHOUT PERMISSION OF LANDSCAPE ARCHITECT.
- C. COMPLY WITH SIZING AND GRADING STANDARDS OF THE LATEST EDITION OF 'AMERICAN STANDARD FOR NURSERY STOCK'. A PLANT SHALL BE DIMENSIONED AS IT STANDS IN ITS NATURAL POSITION.
 1. SPECIFIED POT SIZES AND PLANT GRADES SHOULD COMPLY WITH THE STANDARDS ACCEPTED BY THE ANLA. THESE STANDARDS LIST MINIMUM DIMENSIONS FOR CONTAINERS IN VARIOUS CLASSES AND DEFINE MINIMUM STANDARDS FOR BARE ROOT LINES, DIVISIONS, AND FIELD CLUMPS.
- D. ALL PLANTS SHALL BE LOCALLY GROWN UNDER CLIMATIC AND SOIL CONDITIONS SIMILAR TO THOSE IN THE LOCALITY OF THE PROJECT.
- E. STOCK FURNISHED SHALL BE AT LEAST THE MINIMUM SIZE INDICATED. LARGER STOCK IS ACCEPTABLE WITHIN REASON, AT NO ADDITIONAL COST TO OWNER. ROOT SYSTEMS MUST MEET ANLA STANDARDS AS SPECIFIED. PLANTS SHOULD NOT BE ALTERED BY PRUNING OR OTHER MEANS TO MEET SPECIFICATIONS.
- F. PLANTS MAY BE INSPECTED AND APPROVED AT THE PLACE OF GROWTH, FOR COMPLIANCE WITH SPECIFICATION REQUIREMENTS FOR QUALITY, SIZE AND VARIETY.

1.03 SUBMITTALS

- A. AFTER PREPARATION, A SAMPLE OF THE PLANTING SOIL SHALL BE SUBMITTED TO THE LANDSCAPE IF REQUESTED, PRIOR TO INSTALLATION OF THE PLANTS. ADDITIONAL ORGANIC MATTER AND PREPARATION MAY BE REQUIRED BASED ON THE PHYSICAL PROPERTIES OF THE SAMPLE SUBMITTED. A SEPARATE SAMPLE FROM EACH PLANTING BED SHALL BE SUBMITTED IF REQUESTED.
- B. A SAMPLE OF THE ORGANIC MATTER SPECIFIED SHALL BE SUBMITTED TO THE LANDSCAPE ARCHITECT FOR APPROVAL PRIOR TO USE. A LABORATORY ANALYSIS MAY BE REQUESTED IF DEEMED NECESSARY.
- C. PRIOR TO USE, LABELS OF ALL SOIL AMENDMENTS SHALL BE INSPECTED BY THE LANDSCAPE ARCHITECT TO VERIFY COMPLIANCE WITH THE DESIGN SPECIFICATIONS. SAMPLES MAY BE REQUESTED FOR LABORATORY ANALYSIS.
- D. EACH SEPARATELY CONTAINERIZED PLANT BROUGHT TO THE SITE SHALL BE LABELED WITHIN REASON. PLANTS OF THE SAME PLANTS MAY HAVE ONE LABEL PER PLANT. EACH DUNDE OF BARE ROOT PLANTS SHALL BE LABELED. THESE LABELS MUST SHOW THE BOTANICAL NAME OF THE PLANT, THE LANDSCAPE ARCHITECT SHALL INSPECT THE LABELS, CONTAINER SIZES, AND DIVISION SIZES OF BARE ROOT PLANTS FOR COMPLIANCE TO THE DESIGN SPECIFICATIONS PRIOR TO PLANTING. THE LANDSCAPE ARCHITECT SHALL ALSO VERIFY THAT THE PLANTS DELIVERED TO THE SITE ARE LABELED TRUE TO NAME. UPON ACCEPTANCE OF THE PLANTS BY THE OWNER, THE LANDSCAPE CONTRACTOR SHALL PROVIDE WRITTEN MAINTENANCE PROCEDURES FOR MAINTENANCE OF THE PLANTS.
- E. FOLLOWING THE INSTALLATION, THE LANDSCAPE CONTRACTOR SHALL PROVIDE THE LANDSCAPE ARCHITECT WITH A COPY OF THE ORIGINAL PLAN NOTING ANY SITE ADJUSTMENTS TO THAT ORIGINAL PLAN.

PART 2 PRODUCTS

2.01 MATERIALS

- A. PLANTS: PROVIDE PLANTS TYPICAL OF THEIR SPECIES OR VARIETY; WITH NORMALLY DEVELOPED HABIT AND VIGOROUS ROOT SYSTEMS. PROVIDE ONLY SOUND, HEALTHY, VIGOROUS PLANTS FREE FROM DEFECTS, SUNSCALD INJURIES, PLANT DISEASES, INSECT EGGS, AND ALL FORMS OF INFESTATION.
 1. CONTAINER-GROWN STOCK SHALL HAVE GROWN IN A CONTAINER FOR SUFFICIENT LENGTH OF TIME FOR THE ROOT SYSTEM TO HAVE DEVELOPED TO HOLD ITS SOIL TOGETHER, FIRM AND WHOLE.
 - A. NO PLANTS SHALL BE LOOSE IN THE CONTAINER.
 - B. CONTAINER STOCK SHALL NOT BE POT BOUND.
 2. IF THE USE OF LARGER THAN SPECIFIED PLANTS IS ACCEPTABLE, INCREASE THE SPREAD OF ROOTS OR CONTAINER SIZE IN PROPORTION TO THE SIZE OF THE PLANT.
 3. PLANTS SHALL MEET THE REQUIREMENTS FOR SPREAD AND/OR HEIGHT INDICATED IN THE PLANT LIST AND BE IN ACCORDANCE WITH ANLA STANDARDS.

2.02 PLANT SPECIFICATIONS

- A. PERENNIAL AND GROUNDCOVER PLANTS ARE SPECIFIED FOR DESIGN BY THE CONTAINER CLASS AND SIZE (I.E., 2" SQUARE CONTAINER OR 1 QUART CONTAINER, ETC.) OR, IF BARE ROOT, BY GRADE AS ACCEPTED BY ANLA STANDARDS FOR NURSERY STOCK AND THE PRODUCTION TRADE (I.E., 1-EYE DIVISION, 2-3 EYE DIVISION, FIELD CLUMP, ETC.).
- B. PERENNIALS ARE SPECIFIED BY TYPE:
 1. CONTAINER-GROWN - GROWN TO A SPECIFIED SIZE IN A CONTAINER.
 2. BARE ROOT - PURCHASED FREE OF ANY GROWING MEDIUM REGARDLESS OF GROWING METHOD.
 3. FIELD-POTTED - FIELD-GROWN PLANTS WHICH ARE POTTED FOR DELIVERY AS THEY ARE DUG FROM THE FIELD.

2.03 SOIL REQUIREMENTS

- DEPENDING ON EXISTING CONDITIONS OF TOPSOIL ONSITE, REQUIRED SOIL MIX MAY BE PREPARED ONSITE THROUGH MANUAL AND MECHANICAL MEANS, OR IN THE EVENT EXISTING SOIL IS IN UNACCEPTABLE CONDITION AND MAKEUP, NEW TOPSOIL OR A COMPLETE MIX TO BE INSTALLED AFTER EXISTING SOIL IS EXCAVATED TO PROPER DEPTH AND REMOVED / DISPOSED OFFSITE.
- FINAL SOIL COMPOSITION IN PERENNIAL, ORNAMENTAL GRASS AND GROUNDCOVER BEDS TO BE 40% TOPSOIL, 30% ORGANIC MATTER, 30% COARSE SAND, PLUS 1 LB. FERTILIZER PER CUBIC YARD OF SOIL MIX
- A. SOIL FOR PERENNIAL BEDS SHOULD BE ROTOTILLED 8 INCHES DEEP MINIMUM. GROUNDCOVER BEDS AT 6" MINIMUM UNLESS OTHERWISE NOTED. TOP SOIL SHOULD BE DRY, LOOSE, AND FREE OF DEBRIS, WHERE HARAPAN EXISTS BENEATH THE PREPARED BED, DEEPER PREPARATION MAY BE SPECIFIED. ADDITIONALLY, THE LANDSCAPE CONTRACTOR SHOULD IMMEDIATELY NOTIFY THE LANDSCAPE ARCHITECT IF ANY BEDS DO NOT DRAIN PROPERLY. BAGGED DARK PROFESSIONAL MIXES ARE AN EQUIVALENT SUBSTITUTE FOR PEAT MOSS.

2.04 AMENDMENTS

- A. TOPSOIL: TOPSOIL FOR PLANTING BEDS: FERTILE, FRIABLE, NATURAL TOPSOIL WITHOUT ADMIXTURE OF SUBSOIL MATERIAL, OBTAINED FROM A WELL-DRAINED ARABLE SITE, REASONABLY FREE FROM CLAY, LUMPS, COARSE SANDS, STONES, PLANTS, ROOTS, STICKS, AND OTHER FOREIGN MATERIALS, WITH ACIDITY RANGE OF BETWEEN PH 5.5 TO 6.0 AND BE TYPICAL OF THE AREA.
 1. IDENTIFY SOURCE LOCATION OF TOPSOIL PROPOSED FOR USE ON THE PROJECT.
 2. PROVIDE TOPSOIL FREE OF SUBSTANCES HARMFUL TO THE PLANTS WHICH WILL BE GROWN IN THE SOIL.
- B. ORGANIC MATTER: ORGANIC MATTER CAN BE FROM PEAT MOSS, COMPOST, OR LOCALLY AVAILABLE ORGANIC WASTE. ORGANIC MATTER SHOULD BE WELL COMPOSTED, FREE FROM DEBRIS, WEED SEEDS, AND INSECTS OR DISEASES WHICH MAY BE HARMFUL TO THE INTENDED PLANTING
- C. FERTILIZERS: TO BE DELIVERED TO THE JOB SITE IN THEIR ORIGINAL PACKAGING WITH LEGIBLE, INTACT LABELS INDICATING NUTRIENT CONTENT AND SOURCE. LABELS SHOULD BE CHECKED PRIOR TO USE AND A SAMPLE MAY BE REQUESTED FOR LABORATORY ANALYSIS.
 1. COMMERCIAL TYPE APPROVED BY THE OWNER'S REPRESENTATIVE, CONTAINING 10% NITROGEN, 10% PHOSPHORIC ACID AND 10% POTASH BY WEIGHT OR EQUIVALENT IN A SLOW RELEASED GRANULAR FORM.
- D. COARSE SAND: GRADATION FA-2

PART 3 EXECUTION

3.01 PRE-PLANTING AND POST-PLANTING INSTRUCTIONS

- A. PRE-PLANTING.
 1. PLANTS SHALL BE BROUGHT TO THE SITE THE DAY THEY ARE TO BE INSTALLED, IF POSSIBLE. IF SITUATIONS ARISE WHERE EARLIER DELIVERY CANNOT BE AVOIDED OR IF PLANTING IS DELAYED AFTER THE PLANTS HAVE BEEN DELIVERED, THEY SHALL BE STORED WHERE THEY CAN BE PROPERLY WATERED, SHELTERED FROM DIRECT SUNLIGHT, AND PROTECTED FROM MECHANICAL DAMAGE BY CONSTRUCTION EQUIPMENT, ANIMALS, ETC. IF STORAGE NEEDS TO BE MORE THAN TWO DAYS, THE PLANTS SHALL BE SEPARATED FAR ENOUGH FROM EACH OTHER TO PROVIDE GOOD AIR CIRCULATION TO THEIR TOPS, REDUCING THE RISK OF FUNGUS. BARE ROOT PLANTS WHICH MUST BE HELD SHALL BE HEALED-IN WHERE THEY CAN BE WATERED AS NEEDED.
 2. ALL PLANTS SHALL BE WATERED THOROUGHLY AND ALLOWED TO DRAIN PRIOR TO PLANTING.
 3. WHILE PLANTING, BARE ROOT PLANTS MUST BE PROTECTED FROM HOT SUN AND DRYING WIND BY SHADING THEM WITH BURLAP, LANDSCAPE FABRIC, STRAW OR OTHER BREATHABLE MATERIAL. PLASTIC IS UNACCEPTABLE. CONTAINERIZED PLANTS MUST BE LEFT IN THEIR CONTAINERS UNTIL SUCH IS PLANTED. THEY SHALL NOT BE REMOVED FROM THE CONTAINERS TO BE LAID OUT ON THE BED WHERE SUN AND WIND WILL DAMAGE THE ROOTS PRIOR TO PLANTING.
 4. ANY DEAD OR DAMAGED PLANT PARTS SHALL BE REMOVED FROM THE PLANTS UPON PLANTING.
 5. SPACING: SPACE GROUNDCOVERS AND PERENNIALS IN ACCORDANCE WITH DESIGNATED AREAS ON DRAWINGS. IN CASE OF AREA SIZE DISCREPANCIES, A TIGHTER SPACING IS PREFERRED.
- B. POST-PLANTING.
 1. MULCH: WHERE MULCHING IS SPECIFIED, THE MULCH MUST BE PULLED AWAY FROM THE STEMS AND CROWNS OF PERENNIALS AND GROUNDCOVERS TO REDUCE THE OCCURRENCE OF ROT OR ROOTS DAMAGE. MULCH THICKNESS IN BED AREAS SHOULD BE 2-3" FOR PERENNIALS AND 1-2" FOR GROUNDCOVERS.
 2. PERENNIAL AND GROUNDCOVER BED AREAS TO BE THOROUGHLY WATERED IMMEDIATELY AFTER INSTALLATION AND CLEANUP.

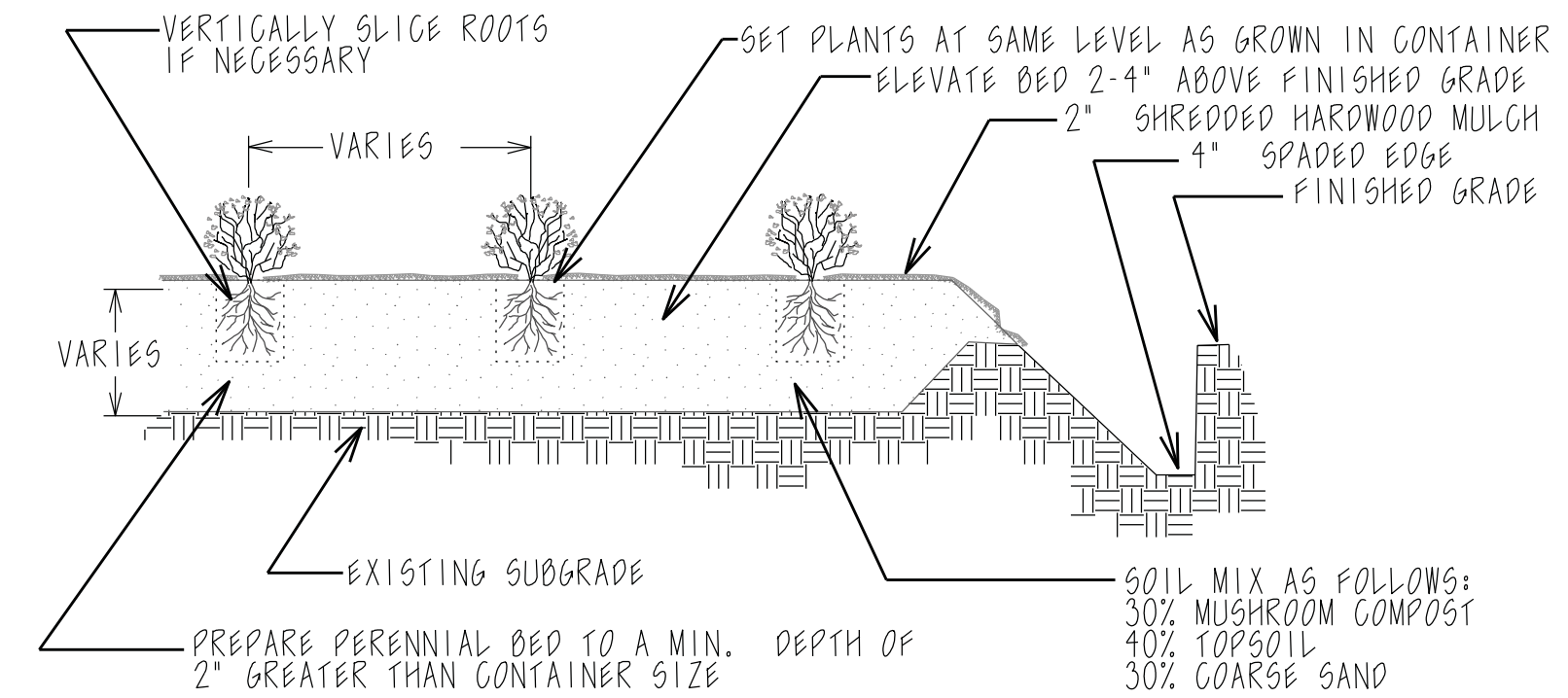
3.02 MAINTENANCE

- A. THE LANDSCAPE CONTRACTOR IS RESPONSIBLE FOR THE MAINTENANCE OF THE PERENNIALS FROM THE TIME THEY ARE BROUGHT ONTO THE JOB SITE UNTIL THEY ARE PLANTED AND ACCEPTED BY THE LANDSCAPE ARCHITECT.
 1. PLANTS SHALL BE WATERED OFTEN ENOUGH TO PREVENT WILTING PRIOR TO PLANTING. AFTER PLANTING, THEY SHALL BE WATERED INITIALLY TO SETTLE THE SOIL, THEN TO PREVENT WILTING AND TO ALLOW THEM TO BECOME ESTABLISHED ON THE SITE.
 2. THE BEDS SHALL BE FREE OF WEEDS AT PLANTING TIME AND SHALL BE MAINTAINED WEED FREE BY THE CONTRACTOR UNTIL THE PLANTING IS ACCEPTED BY THE CLIENT.
 3. SHOULD INSECTS OR DISEASES ATTACK THE PLANTS AFTER INSTALLATION AND PRIOR TO ACCEPTANCE OF THE PLANTING, APPROPRIATE PESTICIDES SHALL BE PROPERLY APPLIED TO CORRECT THE SITUATION.
 4. THE BEDS SHOULD BE CHECKED REGULARLY FOR SOIL SETTLING WHICH MAY EXPOSE THE ROOT BALLS OR OTHERWISE ENDANGER THE HEALTH OF THE PLANTING. SHOULD THIS OCCUR, THE CONTRACTOR SHALL CORRECT THE SETTLING PROBLEMS.
 5. NEWLY PLANTED PERENNIALS AND GROUNDCOVERS MAY BE HEAVED OUT OF THE GROUND BY ALTERNATE FREEZES AND THAWS. SHOULD THIS OCCUR PRIOR TO ACCEPTANCE OF THE PLANTING, THE CONTRACTOR SHALL RE-SET THOSE AFFECTED PLANTS.
 6. ANY NOTED DEFECTS, SUCH AS REVERSIONS, BREAK GROWTH OR COLOR NOT TYPICAL FOR THE SPECIES OR CULTIVAR, SHALL BE BROUGHT TO THE ATTENTION OF THE LANDSCAPE ARCHITECT. THE RECOMMENDATIONS OF THE LANDSCAPE ARCHITECT SHALL BE FOLLOWED TO CORRECT THE SITUATION. RECOMMENDATIONS MAY INCLUDE REMOVAL OF THE ENTIRE PLANT.
- B. THE CLIENT OR THE CLIENT'S ASSIGNED AGENT BECOMES RESPONSIBLE FOR THE MAINTENANCE OF THE PLANTS AFTER THE PLANTING HAS BEEN ACCEPTED BY THE LANDSCAPE ARCHITECT. FAILURE TO PROPERLY MAINTAIN THE PLANTING SHALL VOID ANY WARRANTY.
 1. THE CLIENT SHALL WATER THE PLANTS TO PREVENT WILTING. THE SCHEDULE WILL VARY WITH THE GROWTH OF THE PLANTS AND PREVAILING CLIMATE. GENERALLY, NEW PLANTINGS WILL NEED TO RECEIVE 1 INCH OF WATER PER WEEK. A RAIN GAUGE SHOULD BE PLACED IN THE PLANTING TO CATCH BOTH RAINFALL AND IRRIGATION WATER TO VERIFY THE AMOUNT OF APPLICATION.
 2. THE CLIENT SHALL PROPERLY PINCH, PRUNE, AND DEADHEAD THE HERACIOUS PERENNIALS AS NEEDED AND AS REQUIRED TO MEET THE AESTHETIC GOAL OF THE PLANTING.
 3. THE CLIENT SHALL MAINTAIN THE PLANTING FREE FROM COMPETING WEEDS.
 4. THE CLIENT SHALL REGULARLY INSPECT THE PLANTING FOR INSECTS AND DISEASES, NOTIFYING THE LANDSCAPE ARCHITECT OF ANY NOTED OCCURRENCES. IF PESTICIDES ARE DEEMED NECESSARY, THEY SHALL BE APPLIED ACCORDING TO THE MANUFACTURER'S RECOMMENDATIONS.
 5. AFTER THE ACCEPTANCE OF THE PLANTING, THE CLIENT IS RESPONSIBLE FOR CORRECTING ANY SETTLING OF THE PLANTING BEDS.
 6. AFTER ACCEPTANCE, THE CLIENT IS RESPONSIBLE FOR SETTING ANY PLANTS WHICH ARE HEAVED OUT OF THE GROUND IN WHOLE OR IN PART BY CLIMATE CHANGES.
 7. UNSATISFACTORY PERFORMANCE OF THE PERENNIALS AND GROUNDCOVERS NOTED BY THE CLIENT AFTER ACCEPTANCE OF THE PLANTING SHOULD IMMEDIATELY BE BROUGHT TO THE ATTENTION OF THE LANDSCAPE ARCHITECT.

3.03 WARRANTY

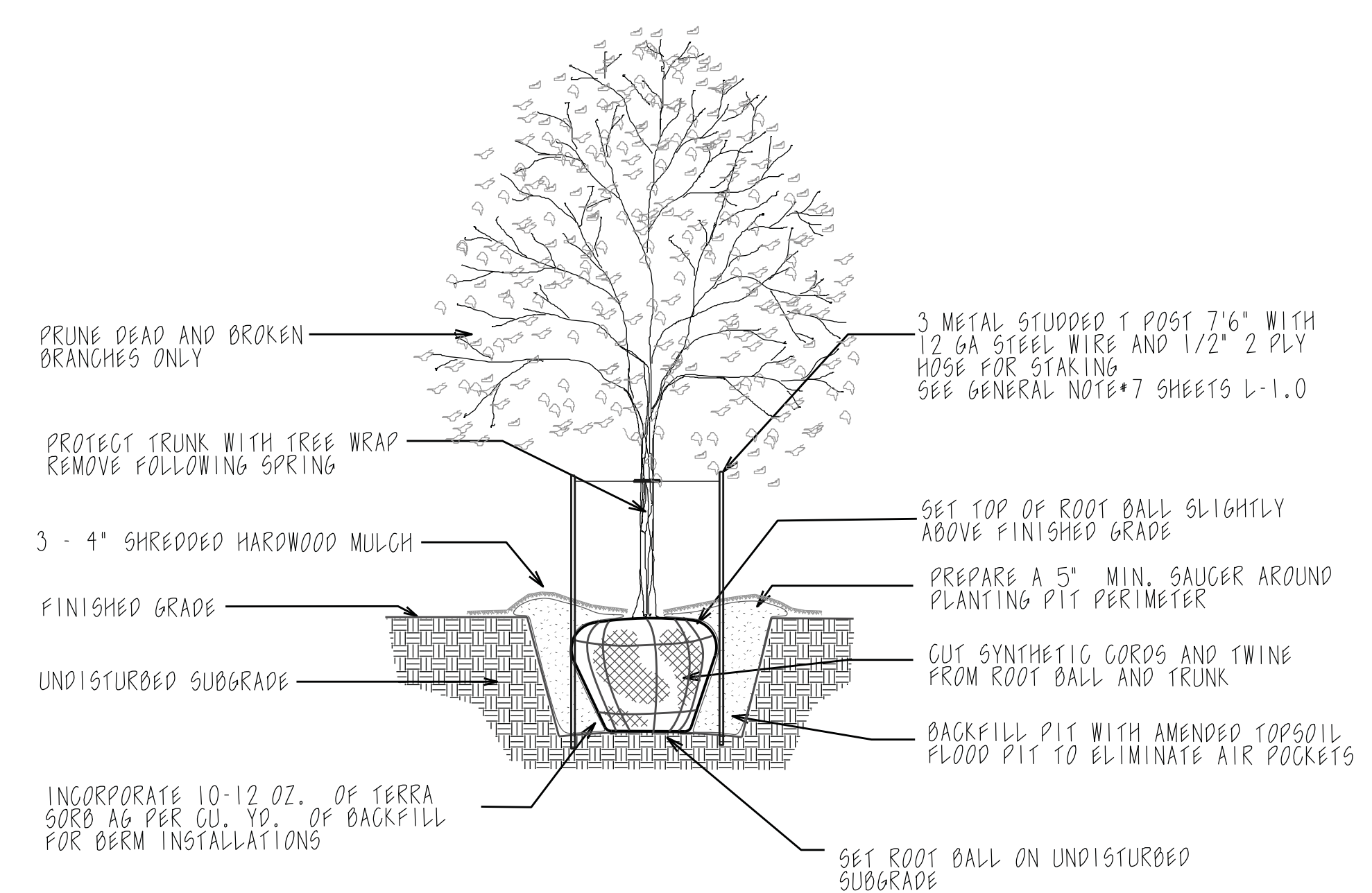
- ALL PLANTS WILL BE GUARANTEED TO BE TRUE TO NAME AS LABELED AND FREE FROM INSECTS, DISEASES, AND MECHANICAL DAMAGES WHEN DELIVERED TO THE SITE. ALL PLANTS WILL BE GUARANTEED TO RESUME ACTIVE GROWTH IN THE APPROPRIATE SEASON AND TO SURVIVE FOR A MINIMUM OF ONE YEAR AFTER ACCEPTANCE BY THE CLIENT, PROVIDED THE RECOMMENDED MAINTENANCE PROCEDURES ARE FOLLOWED BY THE CLIENT. MAINTENANCE INCLUDES, BUT IS NOT LIMITED TO WATERING, FERTILIZING, MULCHING, PRUNING, PROTECTING FROM UNSEASONABLE WEATHER AND ALL OTHER NORMAL CULTURAL PRACTICES.

END OF SECTION 0003



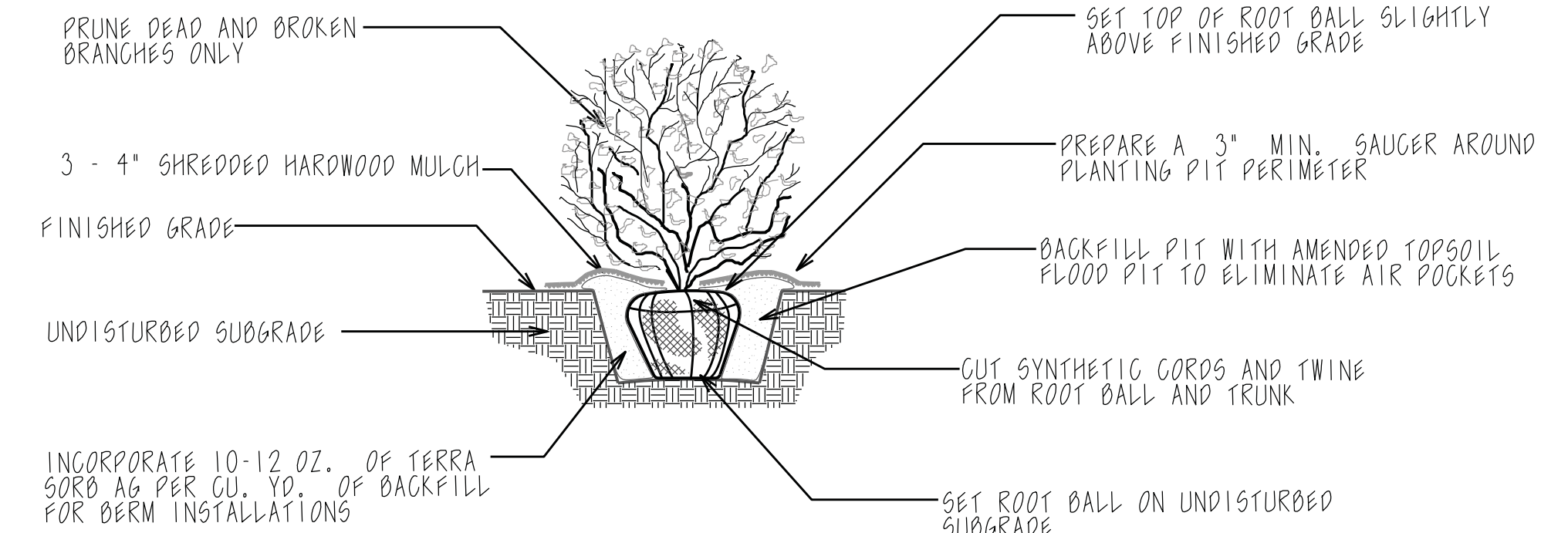
PERENNIAL PLANTING DETAIL

NOT TO SCALE USE ONLY LOCALLY GROWN NURSERY STOCK



TREE PLANTING DETAIL

NOT TO SCALE USE ONLY LOCALLY GROWN NURSERY STOCK



SHRUB PLANTING DETAIL

NOT TO SCALE USE ONLY LOCALLY GROWN NURSERY STOCK

ADDRESS
COMMENTS
ROUND 3
12/22/2021

LANDSCAPE SPECIFICATIONS

SECTION 0004

SEEDING

PART 1 GENERAL

1.01 DESCRIPTION

- A. PROVIDE SEEDED LAWNS AS SHOWN AND SPECIFIED. THE WORK INCLUDES:
1. SOIL PREPARATION.
 2. SEEDING LAWNS, AND OTHER INDICATED AREAS.
 3. MULCHING.
 4. RECONDITIONING EXISTING LAWNS.
- B. RELATED WORK:
1. SECTION 00000: EARTHWORK.
 2. SECTION 00004: SODDING.
 3. SECTION 00002: TREES AND SHRUB PLANTING.
 4. SECTION 00003: PERENNIAL, ORNAMENTAL GRASS, GROUNDCOVER PLANTING

1.02 QUALITY ASSURANCE

- A. COMPLY WITH SECTION 00001 REQUIREMENTS.
- B. COMPLY WITH ALL ILLINOIS STATE CERTIFICATION SEED STANDARDS.

1.03 DELIVERY, STORAGE, AND HANDLING

- A. DELIVER SEED AND FERTILIZER MATERIALS IN ORIGINAL UNOPENED CONTAINERS SHOWING WEIGHT, ANALYSIS, AND NAME OF MANUFACTURER. STORE IN SUCH A MANNER TO PREVENT WETTING AND DEGRADATION.

1.04 PROJECT CONDITIONS

- A. WORK NOTIFICATION: NOTIFY OWNER'S REPRESENTATIVE AT LEAST FIVE (5) WORKING DAYS PRIOR TO START OF SEEDING OPERATIONS.
- B. PROTECT EXISTING UTILITIES, PAVING, AND OTHER FACILITIES FROM DAMAGE CAUSED BY SEEDING OPERATIONS.
- C. PERFORM SEEDING WORK ONLY AFTER PLANTING AND OTHER WORK AFFECTING GROUND SURFACE HAS BEEN COMPLETED.
- D. THE OWNER IS RESPONSIBLE FOR RESTRICTING TRAFFIC FROM LAWN AREAS UPON NOTIFICATION OF COMPLETION OF WORK.
- E. PROVIDE HOSE AND LAWN WATERING EQUIPMENT AS REQUIRED. OWNER TO PROVIDE WATER ON SITE.

WARRANTY

- A. THE CONTRACTOR WARRANTIES ALL SEEDED AREAS TO BE INSTALLED ACCORDING TO SPECIFICATIONS, UNTIL ACCEPTED BY OWNER'S REPRESENTATIVE.
- B. DISCLAIMER - ACTS OF GOD AND OTHER CONDITIONS BEYOND THE LANDSCAPE CONTRACTOR'S CONTROL SUCH AS VANDALISM SHALL NOT BE THE RESPONSIBILITY OF THE LANDSCAPE CONTRACTOR. ANY OVER-SEEDING OR RE-GRADING CONTRIBUTED TO THIS MUST BE IN ADDITION TO THE CONTRACT AMOUNT.

PART 2 PRODUCTS

MATERIALS

- A. LAWN SEED: RECOMMENDATION OF SEED MIX FROM LOCAL EXTENSION SERVICE FOR THAT AREA. FRESH, CLEAN, AND NEW CROP SEED MIXTURE.
- B. SEED TYPE: AS SPECIFIED ON DRAWINGS OR RECOMMENDED FROM LOCAL EXTENSION SERVICE.
- C. FERTILIZER:
1. GRANULAR, NON-BURNING PRODUCT COMPOSED OF NOT LESS THAN 50% ORGANIC, SLOW ACTING, GUARANTEED ANALYSIS PROFESSIONAL FERTILIZER.
 2. STARTER FERTILIZER CONTAINING 5% NITROGEN, 20% PHOSPHORIC ACID, AND 20% POTASH BY WEIGHT, OR SIMILAR APPROVED COMPOSITION.
- D. MULCH: TYPE / METHOD SPECIFIED ON DRAWING
1. STRAW: CLEAN OAT OR WHEAT STRAW, WELL SEASONED BEFORE BALEING, FREE FROM MATURE SEED-BEARING STALKS OR ROOTS OF PROHIBITED OR NOXIOUS WEEDS. SHOULD BE FREE OF ROT AND MILDEW.
 2. HYDRO-SEED CELLULOSE FIBER MULCH OR EQUAL.
 3. EROSION BLANKET: NORTH AMERICAN GREEN S6150, CURLEX, OR APPROVED EQUAL. TYPICAL ROLL 6'X90' 720SQ'
- E. WATER: FREE OF SUBSTANCE HARMFUL TO SEED GROWTH. HOSES OR OTHER METHODS OF TRANSPORTATION FURNISHED BY CONTRACTOR. WATER PROVIDED BY OWNER ON SITE.

PART 3 EXECUTION

3.01 INSPECTION

- A. EXAMINE FINISH SURFACES, GRADES, TOPSOIL QUALITY, AND DEPTH. DO NOT START SEEDING WORK UNTIL UNSATISFACTORY CONDITIONS ARE CORRECTED.

3.02 PREPARATION

- A. LIMIT PREPARATION TO AREAS WHICH WILL BE IMMEDIATELY SEEDED.
- B. LOOSEN TOPSOIL OF LAWN AREAS TO MINIMUM DEPTH OF 3", IF COMPACTED. REMOVE STONES OVER 1" IN ANY DIMENSION, STICKS, ROOTS, RUBBISH, AND EXTRANEIOUS MATTER.
- C. APPLY FERTILIZER TO INDICATED TURF AREAS AT A RATE EQUAL TO 1.0 LB. OF ACTUAL NITROGEN PER 1,000 SQ. FT.(220 LBS./ACRE)
- D. GRADE LAWN AREAS TO A SMOOTH, FREE-DRAINING, EVEN SURFACE WITH A LOOSE, MODERATELY COARSE TEXTURE.
- E. RESTORE PREPARED AREAS TO SPECIFIED CONDITION IF BRODED, SETTLED, OR OTHERWISE DISTURBED AFTER FINE GRADING AND PRIOR TO SEEDING.

3.03 INSTALLATION

- A. SEEDING:
1. SEED IMMEDIATELY AFTER PREPARATION OF BED. SPRING SEEDING BETWEEN APRIL 1 AND JUNE 15 AND FALL SEEDING BETWEEN AUGUST 15 AND OCTOBER 15, OR AT SUCH OTHER TIMES ACCEPTABLE TO THE OWNER'S REPRESENTATIVE.
 2. SEED INDICATED AREAS WITHIN CONTRACT LIMITS. AREAS OUTSIDE CONTRACT LIMITS DISTURBED AS A RESULT OF CONSTRUCTION OPERATIONS WILL BE CHARGED ACCORDING TO AREA AND IN ADDITION TO CONTRACT.
 3. APPLY SEED WITH A ROTARY OR DROP TYPE DISTRIBUTOR. INSTALL SEED EVENLY BY SOWING EQUAL QUANTITIES IN TWO(2) DIRECTIONS, AT RIGHT ANGLES TO EACH OTHER.
 4. SOW GRASS SEED AT A RATE RECOMMENDED BY TYPE OF SEED USED. TYPICAL BLUEGRASS BLEND -5 LB. PER 1000 SQ'
 5. INCORPORATE SEED INTO TOP 1/8" OF SOIL AND ROLL.
- B. MULCHING:
1. PLACE STRAW FIBER MULCH, OR EROSION BLANKET ON SEEDED AREAS WITHIN 24 HOURS AFTER SEEDING.
 2. (A) PLACE STRAW MULCH UNIFORMLY IN CONTINUOUS BLANKET AT THE RATE OF 2.5 TONS PER ACRE, OR 2 BALES PER 1,000 SQ. FT. OF AREA. A MECHANICAL BLOWER MAY BE USED FOR STRAW MULCH APPLICATION WHEN ACCEPTABLE TO THE OWNER'S REPRESENTATIVE.
(B) A CELLULOSE FIBER OR APPROVED EQUAL MAY BE USED IN AQUEOUS MIXTURE AT THE RATE OF 1500 LBS./ACRE.
 3. SECURE STRAW TO SOIL BY APPROVED METHODS.
 4. SECURE EROSION BLANKET TO SOIL AS PER MANUFACTURERS SPECIFICATION.

CONTINUE SECTION 0004 - SEEDING

3.04 RECONDITIONING EXISTING LAWNS

- A. ANALYZE THE CONDITION OF EXISTING TURF AREAS TO REMAIN, AND DETERMINE THE EXTENT OF NECESSARY RECONDITIONING. PROVIDE UNIT COST AND ESTIMATE OF WORK. OBTAIN OWNER'S APPROVAL PRIOR TO COMMENCEMENT OF WORK.
- B. RECONDITION EXISTING LAWN AREAS DAMAGED BY CONTRACTOR'S OPERATIONS, INCLUDING STORAGE OF MATERIALS OR EQUIPMENT AND MOVEMENT OF CONSTRUCTION VEHICLES, AND EXISTING LAWN AREAS AS INDICATED.
- C. PROVIDE FERTILIZER, SEED AND SOIL AMENDMENTS AS SPECIFIED FOR NEW LAWNS AND AS REQUIRED TO PROVIDE A SATISFACTORILY RECONDITIONED LAWN. PROVIDE TOPSOIL AS REQUIRED TO FILL LOW AREAS AND MEET NEW FINISHED GRADES.
- D. CULTIVATE BARE AND COMPACTED AREAS THOROUGHLY.
- E. REMOVE DISPOSED OR UNSATISFACTORY LAWN AREAS. DO NOT BURY INTO SOIL. REMOVE TOPSOIL CONTAINING FOREIGN MATERIALS RESULTING FROM CONTRACTOR'S OPERATIONS, INCLUDING OIL DRIPPINGS, STONE, GRAVEL, AND OTHER CONSTRUCTION MATERIALS.
- F. WHERE SUBSTANTIAL BUT THIN LAWN REMAINS, RAKE, AERATE IF COMPACTED, OR CULTIVATE SOIL; FERTILIZE AND SEED.

3.05 MAINTENANCE

- A. MAINTENANCE OF INSTALLED AND ACCEPTED SEEDED LAWNS WILL BE PERFORMED BY THE OWNER.

3.06 ACCEPTANCE

- A. SEEDED AREAS WILL BE INSPECTED AT COMPLETION OF INSTALLATION AND ACCEPTED SUBJECT TO COMPLIANCE WITH SPECIFIED MATERIALS AND INSTALLATION REQUIREMENTS.
- B. SECTIONS OF THE WORK MAY BE ACCEPTED WHEN COMPLETE UPON AGREEMENT OF THE OWNER'S REPRESENTATIVE AND THE CONTRACTOR.
- C. UPON ACCEPTANCE, THE OWNER WILL ASSUME LAWN MAINTENANCE.

3.07 CLEANING

- A. PERFORM CLEANING DURING INSTALLATION OF THE WORK AND UPON COMPLETION OF THE WORK. REMOVE FROM SITE ALL EXCESS MATERIALS, DEBRIS, AND EQUIPMENT. REPAIR DAMAGE RESULTING FROM SEEDING OPERATIONS.

END OF SECTION 0004

SECTION 0005

SODDING

PART 1 GENERAL

1.01 DESCRIPTION

- A. PROVIDE SODDED LAWNS AS SHOWN AND SPECIFIED. THE WORK INCLUDES:
1. SOIL PREPARATION.
 2. SODDING LAWNS.
- B. RELATED WORK:
1. SECTION 02200: EARTHWORK.
 2. SECTION 00004: SEEDING.
 3. SECTION 00002: TREES AND SHRUB PLANTING.
 4. SECTION 00003: PERENNIAL, ORNAMENTAL GRASS, GROUNDCOVER PLANTING

1.02 QUALITY ASSURANCE

- A. COMPLY WITH SECTION 00001 REQUIREMENTS.
- B. SOD: COMPLY WITH AMERICAN SOD PRODUCERS ASSOCIATION (ASPA) CLASSES OF SOD MATERIALS.

1.03 SUBMITTALS

- A. SUBMIT SOD GROWER'S CERTIFICATION OF GRASS SPECIES. IDENTIFY SOURCE LOCATION.

1.04 DELIVERY, STORAGE, AND HANDLING

- A. CUT, DELIVER AND INSTALL SOD WITHIN A 24-HOUR PERIOD.
1. DO NOT HARVEST OR TRANSPORT SOD WHEN MOISTURE CONTENT MAY ADVERSELY AFFECT SOD SURVIVAL.
 2. PROTECT SOD FROM DEHYDRATION PRIOR TO INSTALLATION.

1.05 PROJECT CONDITIONS

- A. WORK NOTIFICATION: NOTIFY OWNER'S REPRESENTATIVE AT LEAST FIVE (5) WORKING DAYS PRIOR TO START OF SODDING OPERATIONS.
- B. PROTECT EXISTING UTILITIES, PAVING, AND OTHER FACILITIES FROM DAMAGE CAUSED BY SODDING OPERATIONS.
- C. PROVIDE HOSE AND LAWN WATERING EQUIPMENT AS REQUIRED. OWNER TO PROVIDE WATER ON SITE.

1.06 WARRANTY

- A. DISCLAIMER - ACTS OF GOD AND OTHER CONDITIONS BEYOND THE LANDSCAPE CONTRACTOR'S CONTROL SUCH AS VANDALISM SHALL NOT BE THE RESPONSIBILITY OF THE LANDSCAPE CONTRACTOR. ANY RE-SODDING OR RE-GRADING CONTRIBUTED TO THIS MUST BE AN ADDITION TO THE CONTRACT AMOUNT.

PART 2 PRODUCTS

2.01 MATERIALS

- A. SOD: TO BE HARVESTED FROM LOCAL SOD NURSERY AND UNLESS OTHERWISE INDICATED TO BE A(5) FIVE WAY MINIMUM BLUEGRASS BLEND. (FIVE VARIETIES OF BLUEGRASS)
- B. PROVIDE WELL-ROOTED, HEALTHY SOD. PROVIDE SOD UNIFORM IN COLOR, LEAF TEXTURE, DENSITY AND DEVELOPMENT WHEN PLANTED.
1. FURNISH SOD UNIFORMLY MACHINE-STRIPPED FROM 3/4" - 1 1/2" THICK WITH CLEAN CUT EDGES.
- C. FERTILIZER:
1. GRANULAR, NON-BURNING PRODUCT COMPOSED OF NOT LESS THAN 50% ORGANIC SLOW ACTING, GUARANTEED ANALYSIS PROFESSIONAL FERTILIZER.
 2. STARTER FERTILIZER CONTAINING 5% NITROGEN, 10% PHOSPHORIC ACID AND 10% POTASH BY WEIGHT, OR ACCORDING TO SPECIAL PROVISIONS.
- D. WATER: FREE OF SUBSTANCE HARMFUL TO SOD GROWTH. HOSES OR OTHER METHODS OF TRANSPORTATION FURNISHED BY CONTRACTOR. WATER WILL BE PROVIDED BY THE OWNER ON SITE.

CONTINUE SECTION 0005 - SODDING

PART 3 EXECUTION

3.01 INSPECTION

- A. EXAMINE FINISH SURFACES, GRADES, TOPSOIL QUALITY, AND DEPTH. DO NOT START SODDING WORK UNTIL UNSATISFACTORY CONDITIONS ARE CORRECTED.

3.02 PREPARATION

- A. LIMIT PREPARATION TO AREAS WHICH WILL BE IMMEDIATELY SODDED.
- B. ROTOTILL TOPSOIL OF LAWN AREAS TO MINIMUM DEPTH OF 3", IF COMPACTED. REMOVE STONES OVER 1" IN ANY DIMENSION, STICKS, ROOTS, RUBBISH, AND EXTRANEIOUS MATTER.
- D. APPLY FERTILIZER AT THE RATE EQUAL TO 1.0 LB. OF ACTUAL NITROGEN PER 1,000 SQ. FT. (220 LBS./ACRE). APPLY FERTILIZER BY MECHANICAL ROTARY OR DROP TYPE DISTRIBUTOR: THOROUGHLY AND EVENLY INCORPORATE IT INTO THE SOIL TO A DEPTH OF 3" BY DISKING OR OTHER APPROVED METHODS. FERTILIZE AREAS INACCESSIBLE TO POWER EQUIPMENT WITH HAND TOOLS AND INCORPORATE IT INTO SOIL.
- E. GRADE LAWN AREAS TO SMOOTH, FREE-DRAINING AND EVEN SURFACE WITH A LOOSE, UNIFORMLY FINE TEXTURE.
- F. RESTORE PREPARED AREAS TO SPECIFIED CONDITION IF BRODED, SETTLED, OR OTHERWISE DISTURBED AFTER FINE GRADING AND PRIOR TO SODDING.

3.03 INSTALLATION

- A. TIME OF INSTALLATION: THE ACCEPTABLE TIME TO INSTALL SOD AND BE CONSIDERED 'IN SEASON' ARE AS FOLLOWS.
1. SPRING - FROM THE TIME THE SOIL IS WORKABLE AND SOD IS BEING HARVESTED, UNTIL JUNE 15TH.
 2. FALL - FROM AUGUST 15TH TO NOVEMBER 1ST.

ALL OTHER TIMES ARE CONSIDERED 'OUT OF SEASON' AND ARE NOT ACCEPTABLE TO INSTALL SOD AT THIS TIME WITHOUT APPROVAL OF LANDSCAPE ARCHITECT (LA) AND WITH THE ADDITIONAL CONDITIONS AS FOLLOWS:

1. JUNE 16TH TO AUGUST 14TH
 - A. SOD TO BE IRRIGATED BY AUTOMATIC SPRINKLER SYSTEM OR
 - B. SOD TO BE IRRIGATED BY MANUAL MEANS WITH SUFFICIENT QUANTITIES OF HOSE AND SPRINKLER HEADS SO AS TO KEEP SOD LUSH AND HEALTHY UNTIL TIME OF KNITTING AND MOWING MAINTENANCE HAS BEGUN. WATERING TO BE MONITORED DAILY.
2. AFTER NOVEMBER 1ST. SOD MAY ONLY BE INSTALLED WITH (LA) APPROVAL AND MILD TEMPERATURES / CONDITIONS EXIST. SOD MAY NOT BE INSTALLED ON FROZEN GROUND AND UNTIL FINAL (FINE) GRADING AND GROUND PREPARATION HAS BEEN APPROVED FOR SOD INSTALLATION BY LANDSCAPE ARCHITECT.

B. SODDING:

1. LAY SOD TO FORM A SOLID MASS WITH TIGHTLY-FITTED JOINTS. BUTT ENDS AND SIDES OF SOD STRIPS. DO NOT OVERLAY EDGES. STAGGER STRIPS TO OFFSET JOINTS IN ADJACENT COURSES. REMOVE EXCESS SOD TO AVOID SMOTHERING OF ADJACENT GRASS. PROVIDE SOD PAD TOP FLUSH WITH ADJACENT CURBS, SIDEWALKS, DRAINS, AND SEEDED AREAS.
2. INSTALL INITIAL ROW OF SOD IN A STRAIGHT LINE, BEGINNING AT BOTTOM OF SLOPES, PERPENDICULAR TO DIRECTION OF THE SLOPED AREA. PLACE SUBSEQUENT ROWS PARALLEL TO AND LIGHTLY AGAINST PREVIOUSLY INSTALLED ROW.
3. TAMP OR ROLL WITH ROLLER TO ENSURE CONTACT WITH SUB-GRADE SOIL.
4. WATER SOD THOROUGHLY IMMEDIATELY AFTER LAYING.
5. STAKE SOD ON SLOPES OVER 2:1 TO ANCHOR.
6. SOD INDICATED AREAS WITHIN CONTRACT LIMITS. AREAS OUTSIDE CONTRACT LIMITS DISTURBED AS A RESULT OF CONSTRUCTION OPERATIONS ARE TO BE CHARGED ACCORDING TO SIZE OF AREA.

3.04 MAINTENANCE

- A. MAINTENANCE OF INSTALLED AND ACCEPTED SODDED LAWNS WILL BE PERFORMED BY THE OWNER.

3.05 ACCEPTANCE

- A. SODDED AREAS WILL BE INSPECTED AT COMPLETION OF INSTALLATION AND ACCEPTED SUBJECT TO COMPLIANCE WITH SPECIFIED MATERIALS AND INSTALLATION REQUIREMENTS.
- B. INSPECTION TO DETERMINE ACCEPTANCE OF SODDED LAWNS WILL BE MADE BY THE OWNER'S REPRESENTATIVE, UPON CONTRACTOR'S REQUEST.
1. SODDED AREAS WILL BE ACCEPTABLE PROVIDED ALL REQUIREMENTS HAVE BEEN COMPLIED WITH, AND A HEALTHY, EVEN-COLORED VIABLE LAWN IS PROVIDED.
- C. SECTIONS OF THE WORK MAY BE ACCEPTED WHEN COMPLETE UPON AGREEMENT OF THE OWNER'S REPRESENTATIVE AND THE CONTRACTOR.
- D. UPON ACCEPTANCE, THE OWNER WILL ASSUME LAWN MAINTENANCE.

3.06 CLEANING

- A. PERFORM CLEANING DURING INSTALLATION OF THE WORK AND UPON COMPLETION OF THE WORK. REMOVE FROM SITE ALL EXCESS MATERIALS, DEBRIS, AND EQUIPMENT. REPAIR DAMAGE RESULTING FROM SODDING OPERATIONS.

END OF SECTION 0005

END

**ADDRESS
COMMENTS
ROUND 3
12/22/2021**