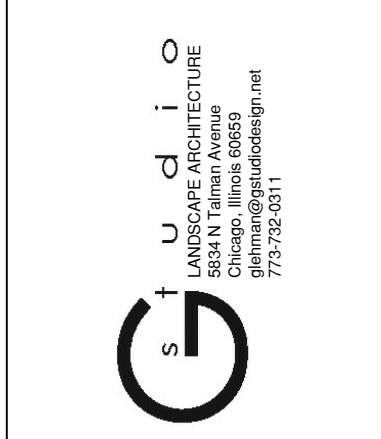


DATE	REVISIONS	ISSUE
09-22		1
	SPECIAL USE PERMIT	
	PROJECT MANAGER: G. LEHMAN & L. PROFFER	



LANDSCAPE PLAN
 ECOLE 360
 1515 WEST DUNDEE ROAD
 ARLINGTON HEIGHTS, ILLINOIS

COPYRIGHT: THIS DRAWING SHALL NOT BE USED, REPRODUCED, MODIFIED OR SOLD EITHER WHOLLY OR IN PART, EXCEPT WHEN AUTHORIZED IN WRITING BY THE LANDSCAPE ARCHITECT.
 PROJECT NO.: 22021
 ISSUE DATE: SEPT 24, 2022
 SCALE: SEE DRAWINGS
 SHEET NUMBER: L1

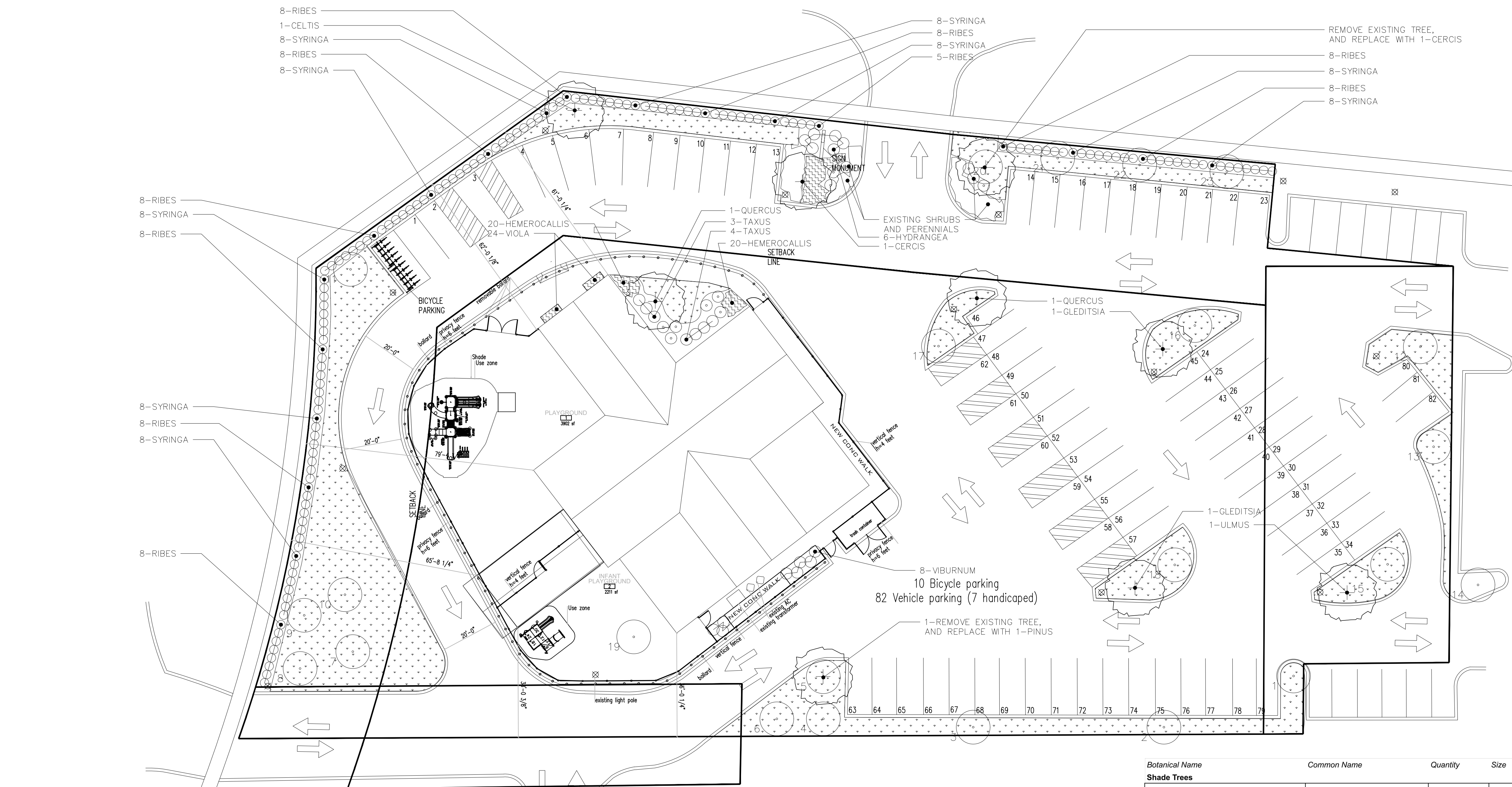
- GRAPHIC KEY**
- PROPOSED TREE
 - EXISTING TREE
 - PROPOSED SHRUB
 - PROPOSED PERENNIAL/ANNUAL BED
 - LAWN, TO BE SODDED AS NEEDED

Existing Trees

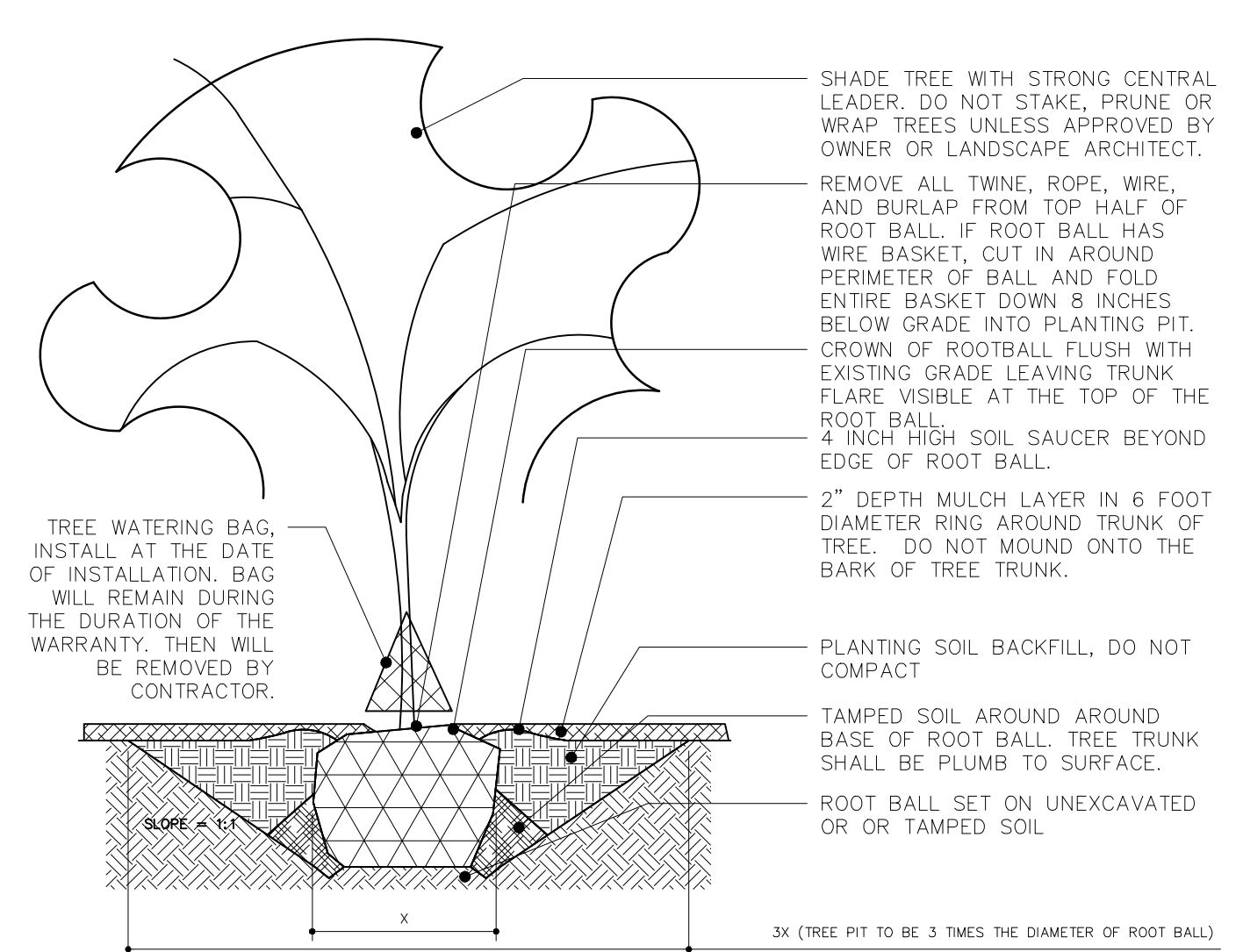
Marker number	Genus Name	Common Name	Size (DBH)	Condition*	Use
1	Tilia	Linden	9"	2	Keep and protect
2	Acer	Maple	11"	2	Keep and protect
3	Acer	Maple	11"	1	Keep and protect
4	Pinus	Pine	15"	1	Keep and protect
5	Pinus	Pine	8"	4	Remove
6	Pinus	Pine	11"	2	Keep and protect
7	Malus	Crabapple	6" Multi	3	Keep and prune
8	Malus	Crabapple	6" Multi	3	Keep and prune
9	Malus	Crabapple	6" Multi	3	Keep and prune
10	Malus	Crabapple	6" Multi	3	Keep and prune
11	Crataegus	Hawthorn	6" Multi	1	Keep and protect
12	Acer	Maple	10"	3	Keep and protect
13	Tilia	Linden	11"	3	Keep and protect
14	Gleditsia	Honeylocust	6"	3	Keep and protect
15	Ulmus	Elm	8.5"	1	Keep and protect
16	Gleditsia	Honeylocust	6"	1	Keep and protect
17	Gleditsia	Honeylocust	6"	1	Keep and protect
18	Ulmus	Elm	7"	1	Keep and protect
19	Amelanchier	Serviceberry	12' ht	1	Keep and protect
20	Malus	Crabapple	8"	4	Remove
21	Acer	Maple	7"	2	Keep and protect
22	Acer	Maple	7"	2	Keep and protect
23	Acer	Maple	6"	2	Keep and protect

*Condition is ranked 1 - 5, 1 is great condition and 5 is dead

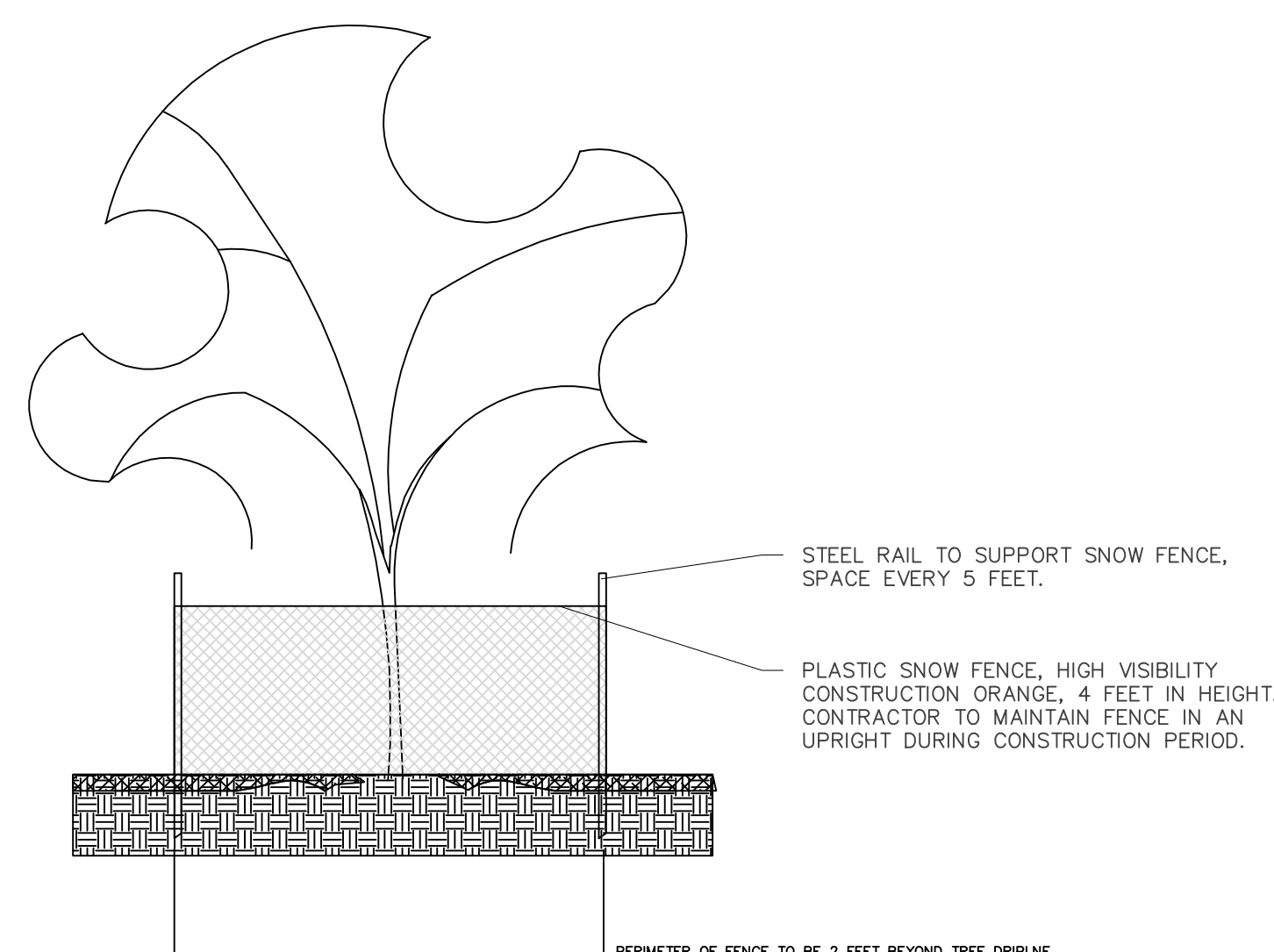
Botanical Name	Common Name	Quantity	Size	Condition	Notes
Shade Trees					
<i>Celtis occidentalis</i>	Hackberry		1 4" caliper	B&B	Trees shall be a single straight trunk with a strong leader; branches shall be cleared to 6 feet above the root flare.
<i>Cercis canadensis</i>	Eastern Redbud		2 4" caliper	B&B	Trees shall be a single straight trunk with a strong leader; branches shall be cleared to 6 feet above the root flare.
<i>Gleditsia triacanthos 'nemis'</i>	Thornless Honeylocust		2 4" caliper	B&B	Trees shall be a single straight trunk with a strong leader; branches shall be cleared to 6 feet above the root flare.
<i>Quercus imbricaria</i>	Shingle Oak		2 4" caliper	B&B	Trees shall be a single straight trunk with a strong leader; branches shall be cleared to 6 feet above the root flare.
<i>Ulmus carpinifolia</i>	Elm		1 4" caliper	B&B	Trees shall be a single straight trunk with a strong leader; branches shall be cleared to 6 feet above the root flare.
Evergreen Trees					
<i>Pinus strobus</i>	Eastern White Pine		1 8 foot height	B&B	Locate close to existing pine location
Shrubs					
<i>Ribes alpinum</i>	Alpine Currant		77 3 foot height	B&B	
<i>Syringa meyeri palibin</i>	Meyer Lilac		72 4 foot height	B&B	
<i>Viburnum dentatum</i>	Arrowwood Viburnum		8 3 foot height	B&B	
<i>Hydrangea paniculata</i>	Limelight Hydrangea		6 3 foot height	B&B	
<i>Taxus cuspidata</i>	Japanese Yew		7 2 foot height	B&B	
Perennials and Annuals					
<i>Hemerocallis spp.</i>	Happy Returns Daylily		40	1 gallon	
<i>Viola spp.</i>	Pansy		24	1 quart	



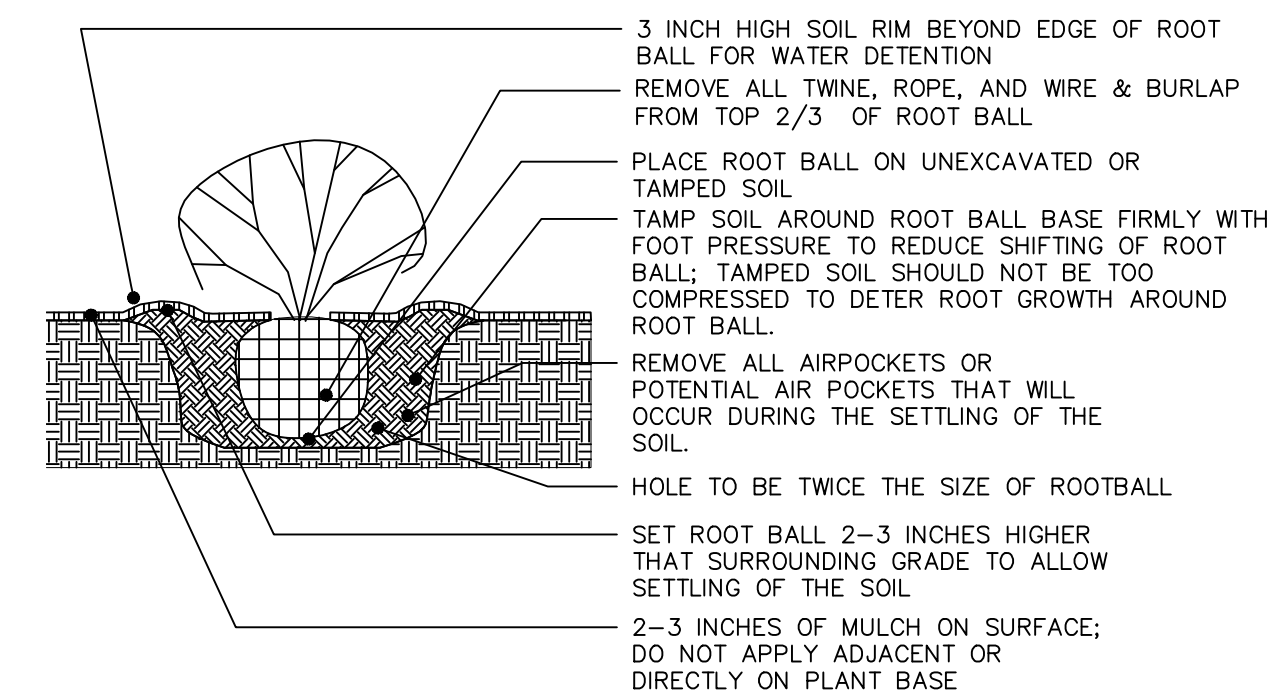
LANDSCAPE PLAN
SCALE: 1"=20'-0"



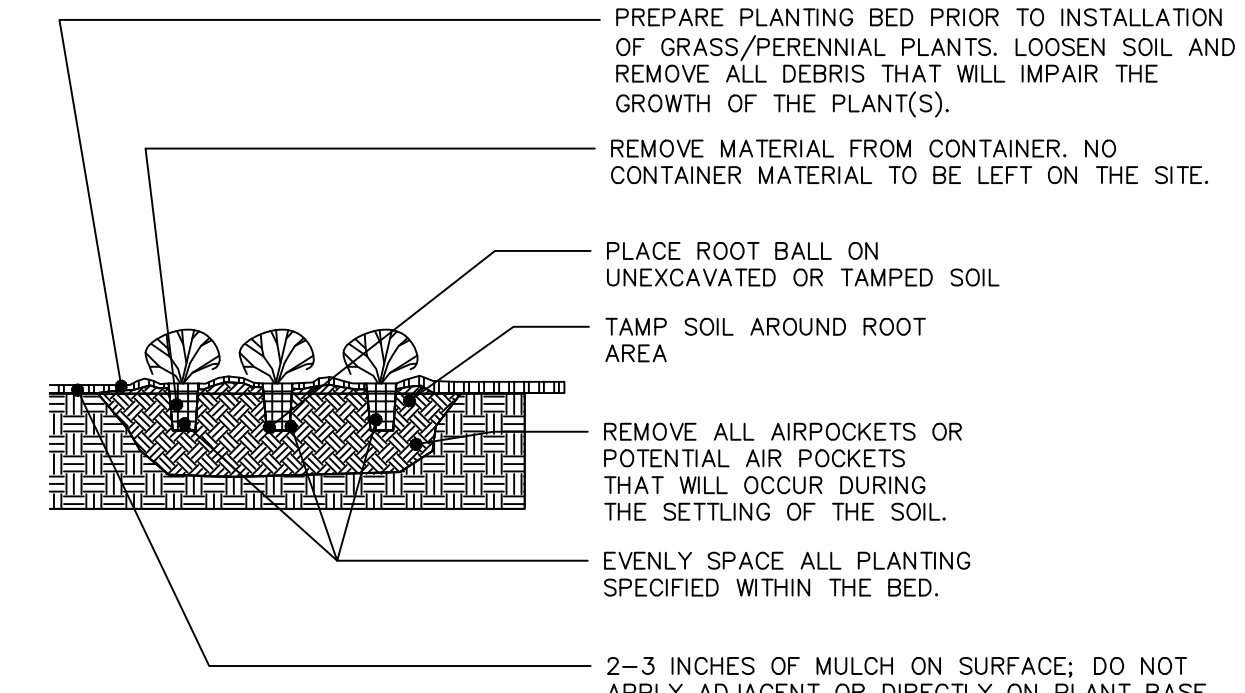
DECIDUOUS TREE DETAIL
SCALE: 1/4"=1'-0"



TREE PROTECTION DETAIL
SCALE: 1/4"=1'-0"



SHRUB DETAIL
SCALE: 1/4"=1'-0"



PERENNIAL DETAIL
SCALE: 1/4"=1'-0"