

We appreciate your consideration for a variance for 2 additional set of channel letters and sconce lighting to be installed at 750 Rand Rd. We believe that these signs & lighting additions are very much in line with the design of the building and, because of the longer site distance to the building from Rand Rd and from East Palatine Rd, that it is needed to reasonably make the location more visible to the streets. The intent is to be more visible to potential customers, to create an attractive shopping center for potential retailers and to contributing to public safety with signage and lighting that will light up the center.

a) The particular difficulty or peculiar hardship it to identify “At Home” as a super retail store that is not easily visible from Rand Rd or East Palatine Road.

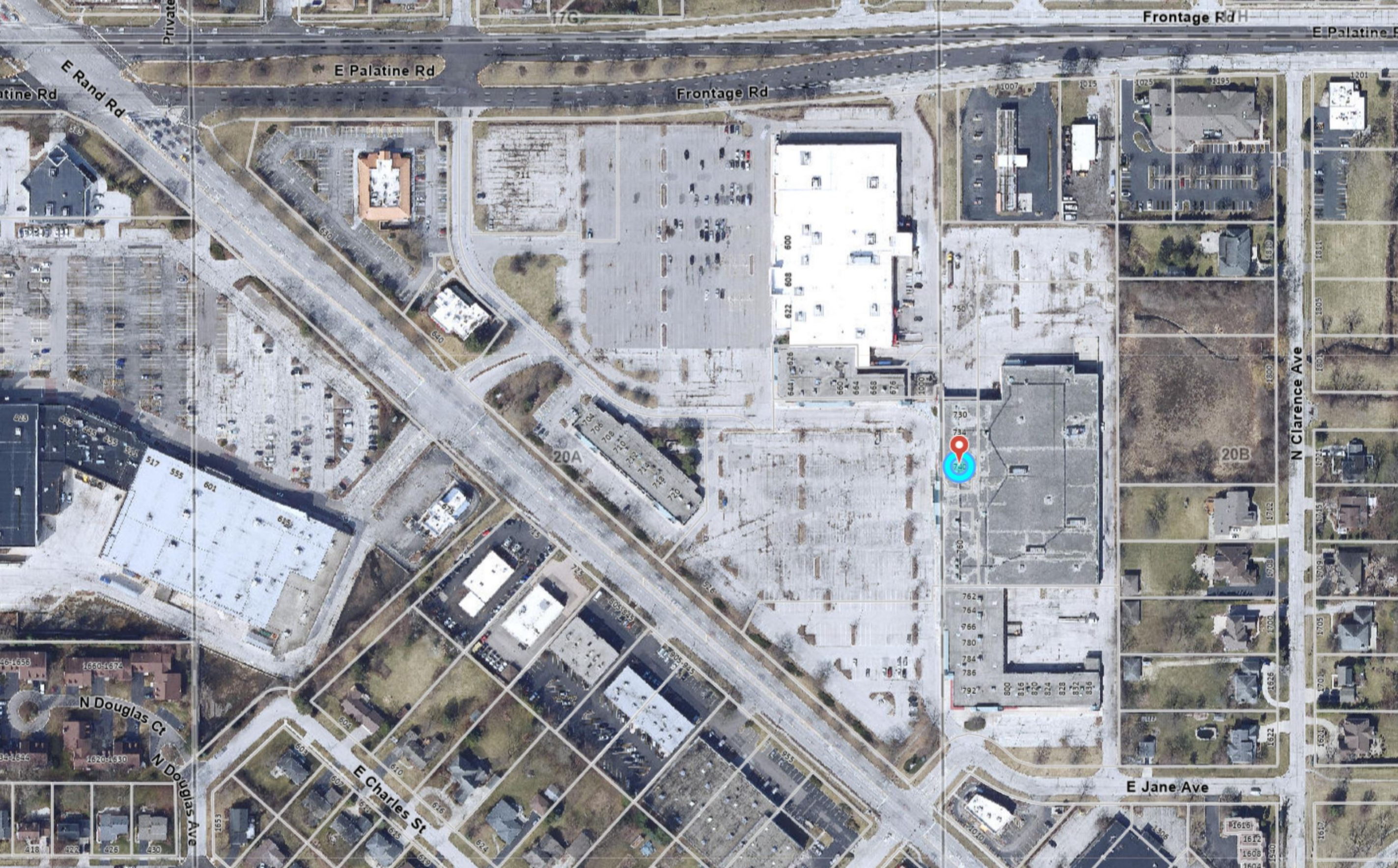
b) The granting of the variation shall not create a traffic hazard, a depreciation of nearby property values or otherwise be determinantal to the public health, safety moral and welfare. It will actually create better economic growth for not only the community but for the business, and the businesses around the area.

c) The variation will serve to relieve the applicant and the shops located in the Southpoint Shopping Center from the difficult attribute to the location, topography, circumstances on nearby properties or other peculiar hardship: and not merely serve to provide the applicant with identification from the street but for all businesses involved. Also providing lighting that will attract potential customers and retailers.

d) The variance will not alter the essential character of the architectural feel of the area or the building, or even the locality.

e) The applicant’s business cannot reasonably function under the standards of the code as the signage and lighting would not be architecturally proportionate with the building unless a variance is granted. The channel letters would identify the type of retailer, as the lighting will allow for public safety not for only the business but for the personnel that are employed at the retailer.

We look forward to receiving your approval and to the installation of an architecturally pleasing Signs and lighting .



Frontage Rd H

E Palatine Rd

E Palatine Rd

Frontage Rd

E Rand Rd

Palatine Rd

N Clarence Ave

E Jane Ave

E Charles St

N Douglas Ct

N Douglas Ave

20A

20B



# CONTEXT PHOTOS



SUBJECT PROPERTY

Vacant Retail



Floor & Décor

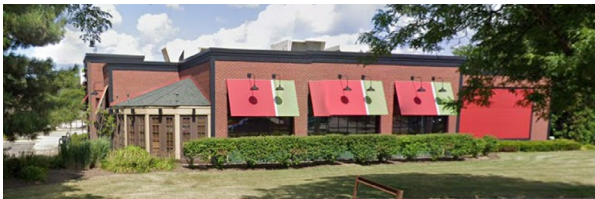
Multi-Tenant Retail



Olive Garden Restaurant



Dogtopia



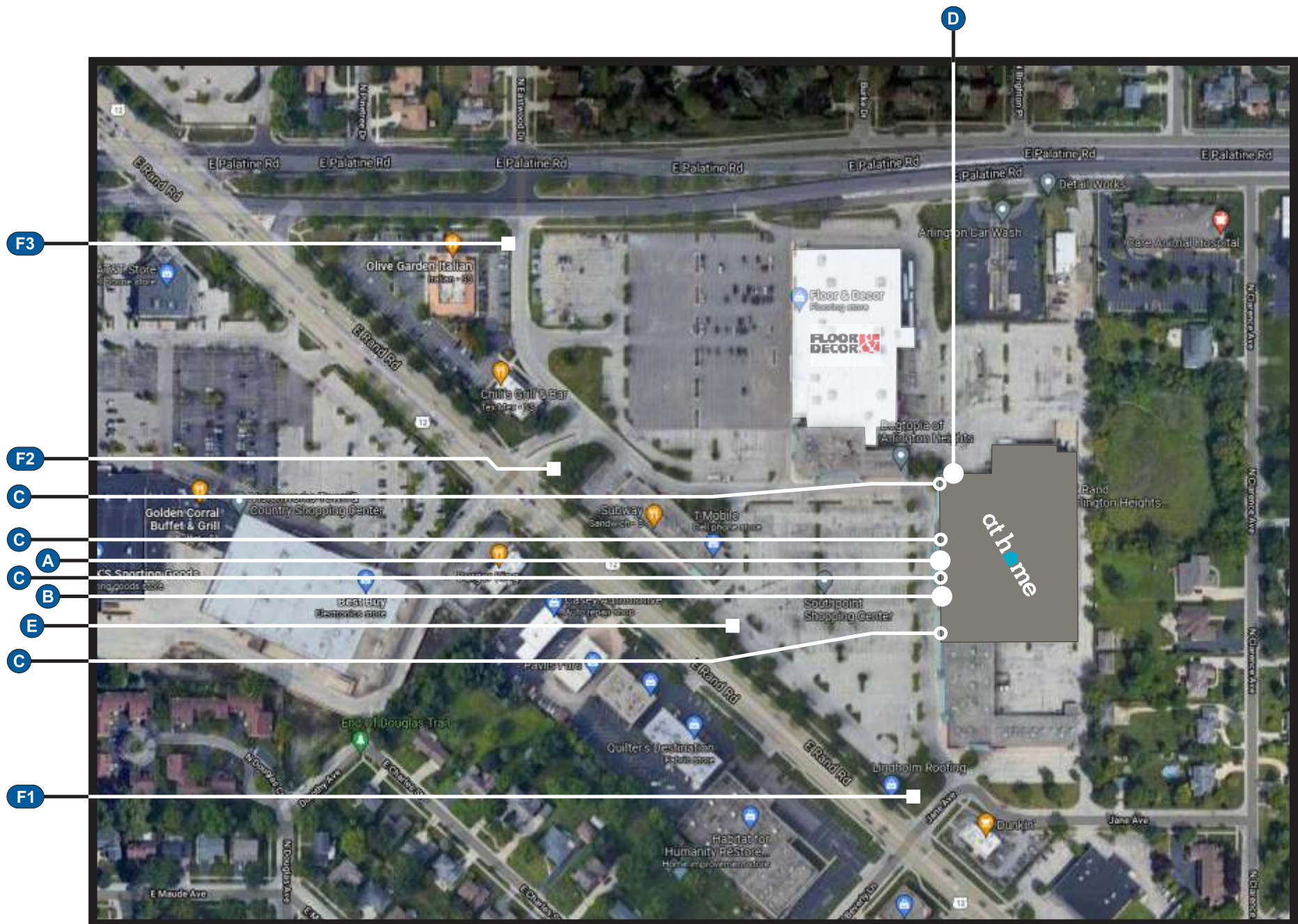
Chili's Restaurant



Multi-Tenant Retail

WALL & GROUND SIGN SCHEDULE

ID	DESCRIPTION	QTY	SQ FT
A	CH. LTRS. - FLUSH, AT HOME	1	301.83
B	CH. LTRS. - FLUSH, TAGLINE	1	104.0
C	SCONCE - LED ILLUM.	3	5.83
D	CH. LTRS. - FLUSH, AT HOME	1	142.77
E	D/F MNMT SIGN	1	118.0
F1	REPL. PYLON SIGN FACES	2	5.83
F2	REPL. PYLON SIGN FACES	2	5.83
F3	REPL. PYLON SIGN FACES	2	5.83



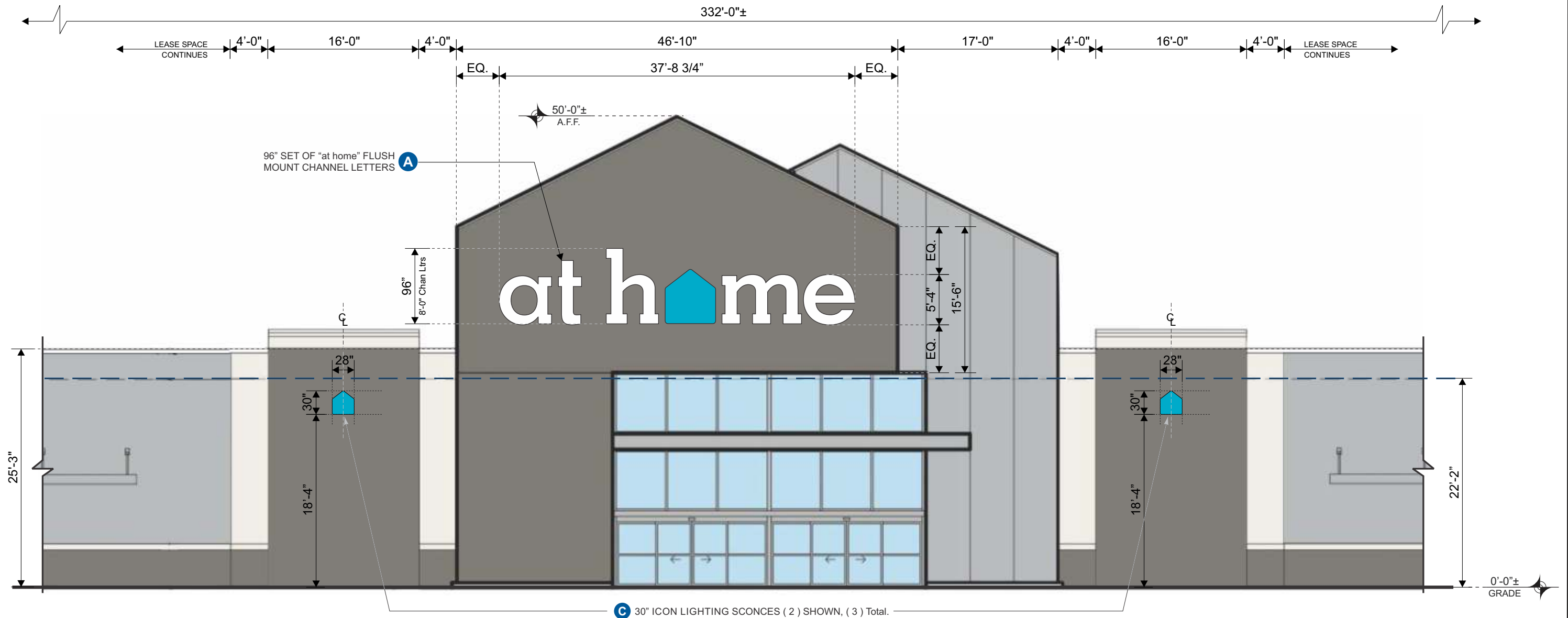
DATE	REVISIONS	NAME
02-17-2022	REVISE W/ UPDATED POLE FACE LAYOUT	1 KD
02-17-2022	REVISE POLE SIGN W/ 2 OPTIONS	1½ KD
02-17-2022	REVISE POLE SIGN FROM PROVIDED IMAGE	¾ KD
02-18-2022	REVISE POLE SIGN CABINET OFF-SET FROM POLE/ PIPE	1 KD
02-18-2022	REPLACE FRONT ELEVATION W/ PROVIDED INCLUDING CANOPIES	1 KD
02-21-2022	ADD IN PREVIOUS POLE SIGN OPTION TO CURRENT DRAWING	1 KD
04-07-2022	REVISE FROM POLE SIGN TO MONUMENT SIGN (E)	1 KD
08-01-2022	REVISE MNMT. HEIGHT AND DEPICT SETBACK	1 KD

AUTHORIZATION	
CLIENT	DATE
ACCOUNT EXECUTIVE	DATE
LANDLORD	DATE

This drawing is the exclusive property of Accent Graphics, Inc. and is the result of the original work of its employees. The plans are provided to your company for the sole purpose of considering the purchase of a sign manufactured by Accent Graphics, Inc. based on these plans. OR the purchase of the plans and design concepts contained therein for manufacture elsewhere. Distribution or exhibition of the plans to anyone outside of your company or the use of the plans by others to manufacture or design a similar sign as displayed in the plans is expressly forbidden. In the event that such exhibition occurs, Accent Graphics will expect payment of a minimum \$2000 design fee in recompense for the time and effort entailed to produce the plans.

CLIENT at home STORE # \_\_\_\_\_  
INSTALLATION ADDRESS 730 E Rand Road | Arlington Heights, IL 60004  
DESIGNER KD ACCOUNT EXECUTIVE DM  
DATE 12-29-2021 SHEET 12 OF 12 DESIGN # 211416-10  
Gerber FILE = \_\_\_\_\_  
Corel FILE = \_\_\_\_\_

**accent signs graphics**  
COMPLETE SIGN SERVICE & FABRICATION  
523 E. ROCK ISLAND  
GRAND PRAIRIE, TX 75050  
TOLL FREE (800) 810-3044  
METRO (972) 399-0333  
EMAIL FAX (972) 986-4456  
WEBSITE www.accentgraphicsinc.com FAX (800) 810-3045



WEST ELEVATION - STOREFRONT ENTRANCE (PARTIAL)

Scale: 3/32" = 1'-0"



WEST ELEVATION - FULL

DATE	REVISIONS	NAME
02-17-2022	REVISE W/ UPDATED POLE FACE LAYOUT	1 KD
02-17-2022	REVISE POLE SIGN W/ 2 OPTIONS	1 ½ KD
02-17-2022	REVISE POLE SIGN FROM PROVIDED IMAGE	¾ KD
02-18-2022	REVISE POLE SIGN CABINET OFF-SET FROM POLE/ PIPE	1 KD
02-18-2022	REPLACE FRONT ELEVATION W/ PROVIDED INCLUDING CANOPIES	1 KD
02-21-2022	ADD IN PREVIOUS POLE SIGN OPTION TO CURRENT DRAWING	1 KD
04-07-2022	REVISE FROM POLE SIGN TO MONUMENT SIGN (E)	1 KD
08-01-2022	REVISE MNMT. HEIGHT AND DEPICT SETBACK	1 KD

AUTHORIZATION	
CLIENT	DATE
ACCOUNT EXECUTIVE	DATE
LANDLORD	DATE
ALL CHANGES MUST BE INITIALED BY CLIENT AND ACCOUNT EXECUTIVE ON FINAL APPROVED PRINT.	

This drawing is the exclusive property of Accent Graphics, Inc. and is the result of the original work of its employees. The plans are provided to your company for the sole purpose of considering the purchase of a sign manufactured by Accent Graphics, Inc. based on these plans. OR the purchase of the plans and design concepts contained therein for manufacture elsewhere. Distribution or exhibition of the plans to anyone outside of your company or the use of the plans by others to manufacture or design a similar sign as displayed in the plans is expressly forbidden. In the event that such exhibition occurs, Accent Graphics will expect payment of a minimum \$2000 design fee in recompense for the time and effort entailed to produce the plans.

CLIENT at home STORE # \_\_\_\_\_

INSTALLATION ADDRESS 730 E Rand Road | Arlington Heights, IL 60004

DESIGNER KD ACCOUNT EXECUTIVE DM

DATE 12-29-2021 SHEET 5 OF 12 DESIGN # 211416-10

Gerber FILE = \_\_\_\_\_

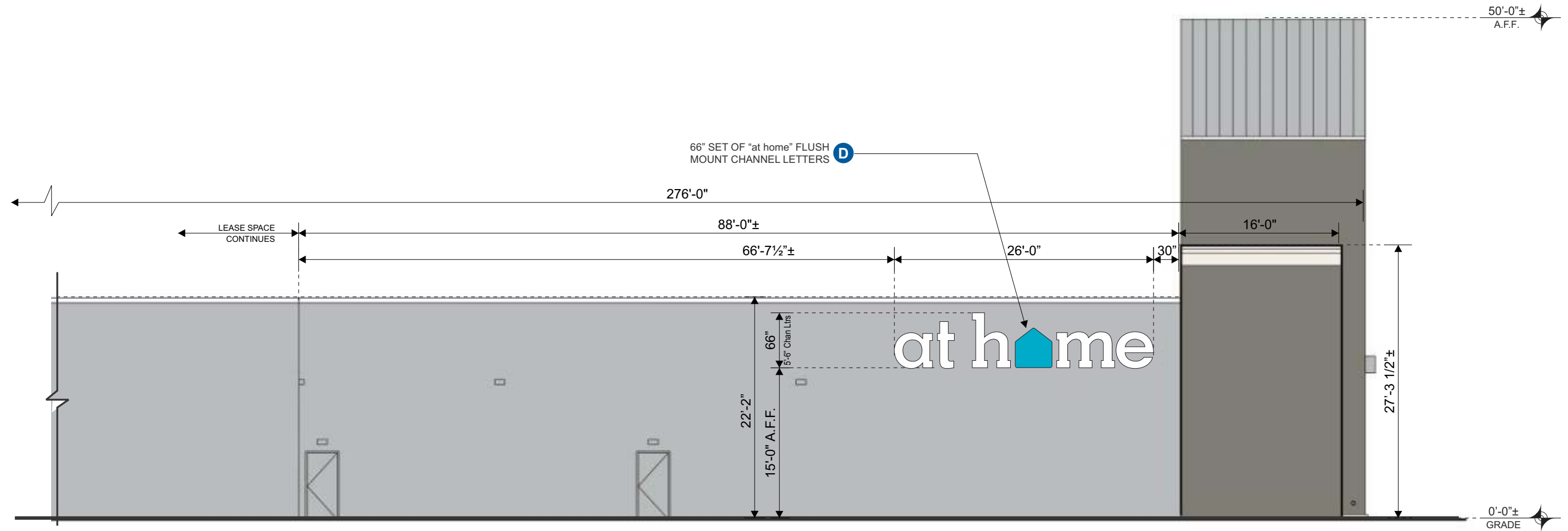
Corel FILE = \_\_\_\_\_

**accent** **signs** **graphics**  
COMPLETE SIGN SERVICE & FABRICATION

523 E. ROCK ISLAND  
GRAND PRAIRIE, TX 75050

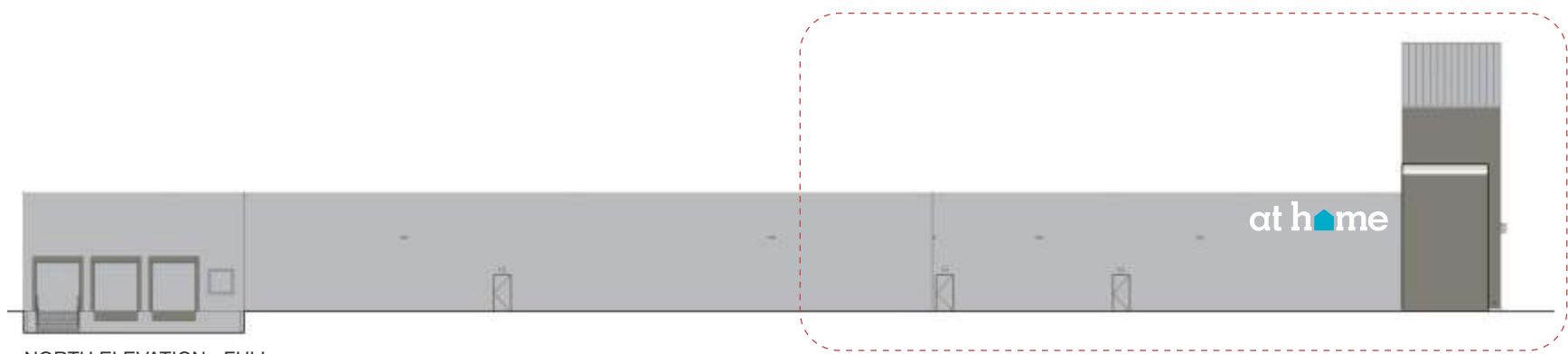
TOLL FREE (800) 810-3044  
METRO (972) 399-0333  
FAX (972) 986-4456  
EMAIL  
WEBSITE [www.accentgraphicsinc.com](http://www.accentgraphicsinc.com) FAX (800) 810-3045





NORTH ELEVATION - SIDE (PARTIAL)

Scale: 3/32" = 1'-0"



NORTH ELEVATION - FULL

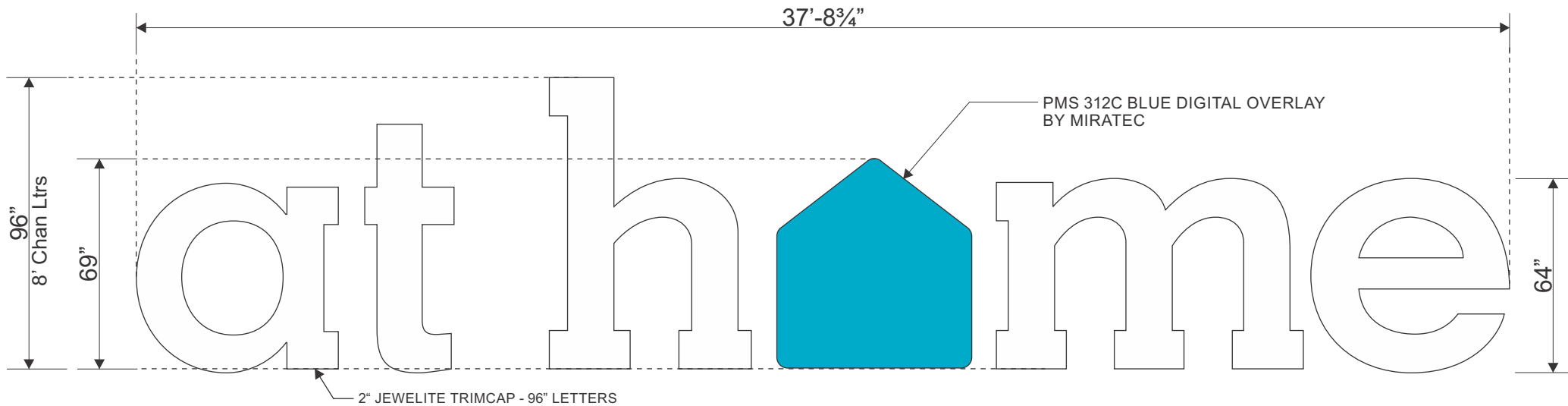
DATE	REVISIONS	NAME
02-17-2022	REVISE W/ UPDATED POLE FACE LAYOUT	1 KD
02-17-2022	REVISE POLE SIGN W/ 2 OPTIONS	1 1/2 KD
02-17-2022	REVISE POLE SIGN FROM PROVIDED IMAGE	3/4 KD
02-18-2022	REVISE POLE SIGN CABINET OFF-SET FROM POLE/ PIPE	1 KD
02-18-2022	REPLACE FRONT ELEVATION W/ PROVIDED INCLUDING CANOPIES	1 KD
02-21-2022	ADD IN PREVIOUS POLE SIGN OPTION TO CURRENT DRAWING	1 KD
04-07-2022	REVISE FROM POLE SIGN TO MONUMENT SIGN (E)	1 KD
08-01-2022	REVISE MNMT. HEIGHT AND DEPICT SETBACK	1 KD

AUTHORIZATION	
CLIENT	DATE
ACCOUNT EXECUTIVE	DATE
LANDLORD	DATE
ALL CHANGES MUST BE INITIALED BY CLIENT AND ACCOUNT EXECUTIVE ON FINAL APPROVED PRINT.	

This drawing is the exclusive property of Accent Graphics, Inc. and is the result of the original work of its employees. The plans are provided to your company for the sole purpose of considering the purchase of a sign manufactured by Accent Graphics, Inc. based on these plans. OR the purchase of the plans and design concepts contained therein for manufacture elsewhere. Distribution or exhibition of the plans to anyone outside of your company or the use of the plans by others to manufacture or design a similar sign as displayed in the plans is expressly forbidden. In the event that such exhibition occurs, Accent Graphics will expect payment of a minimum \$2000 design fee in recompense for the time and effort entailed to produce the plans.

CLIENT at home STORE # \_\_\_\_\_  
INSTALLATION ADDRESS \_\_\_\_\_  
730 E Rand Road | Arlington Heights, IL 60004  
DESIGNER KD ACCOUNT EXECUTIVE DM  
DATE 12-29-2021 SHEET 7 OF 12 DESIGN # 211416-10  
Gerber FILE = \_\_\_\_\_  
Corel FILE = \_\_\_\_\_

**accent SIGNS graphics**  
**COMPLETE SIGN SERVICE & FABRICATION**  
523 E. ROCK ISLAND  
GRAND PRAIRIE, TX 75050  
TOLL FREE (800) 810-3044  
METRO (972) 399-0333  
FAX (972) 986-4456  
EMAIL  
WEBSITE [www.accentgraphicsinc.com](http://www.accentgraphicsinc.com) FAX (800) 810-3045



**A** PLEX FACE CHANNEL LETTERS 301.83 Sq Ft  
(1) SET REQUIRED Scale: 1/4" = 1'-0"

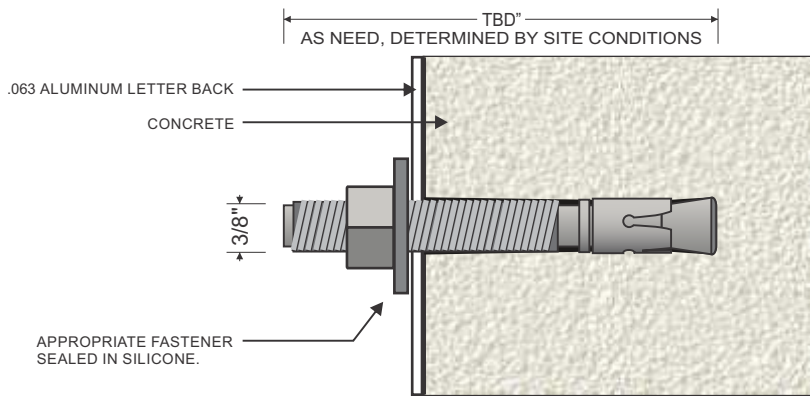
**NOTE:**  
ACCESS REQUIRED FOR  
ELECTRICAL & INSTALLATION

**INSTALLATION REQUIREMENTS** for all signs unless specified otherwise on individual sign specifications.  
Variation from this criteria without written approval from Accent Graphics is strictly forbidden.  
\* All freestanding signs are to be engineered for local conditions by a licensed and registered engineer.

SIGN SIZE	MOUNTING SURFACE						
	SQUARE FOOTAGE	WOOD	SHEET METAL	BRICK	CONCRETE	CONCRETE BLOCK	DRYVIT / EIFS
UNDER 10 SQ. FT.	3/8" THRU BOLTS w/ 2" angle iron backer A minimum of (4) 3/8" bolts are required.	3/8" THRU BOLTS w/ 2" angle iron backer A minimum of (4) 3/8" bolts are required.	3/8" THRU BOLTS w/ 2" angle iron backer A minimum of (4) 3/8" bolts are required.	3/8" LEAD ANCHORS A minimum of (4) 3/8" bolts are required.	3/8" LEAD ANCHORS A minimum of (4) 3/8" bolts are required.	3/8" TOGGLE A minimum of (4) 3/8" bolts are required.	3/8" THRU BOLTS w/ 2" angle iron backer A minimum of (4) 3/8" bolts are required.
10 SQ. FT. TO 50 SQ. FT.	3/8" THRU BOLTS w/ 2" angle iron backer A minimum of (4) 3/8" bolts are required.	3/8" THRU BOLTS w/ 2" angle iron backer A minimum of (4) 3/8" bolts are required.	3/8" THRU BOLTS w/ 2" angle iron backer A minimum of (4) 3/8" bolts are required.	3/8" LEAD ANCHORS A minimum of (4) 3/8" bolts are required.	3/8" LEAD ANCHORS A minimum of (4) 3/8" bolts are required.	3/8" TOGGLE A minimum of (4) 3/8" bolts are required.	3/8" THRU BOLTS w/ 2" angle iron backer A minimum of (4) 3/8" bolts are required.
50 SQ. FT. TO 100 SQ. FT.	3/8" THRU BOLTS w/ 3" angle iron backer A minimum of (10) 3/8" bolts are required.	3/8" THRU BOLTS w/ 3" angle iron backer A minimum of (10) 3/8" bolts are required.	3/8" THRU BOLTS w/ 3" angle iron backer A minimum of (10) 3/8" bolts are required.	1/2" LEAD ANCHORS A minimum of (10) 1/2" bolts are required.	1/2" LEAD ANCHORS A minimum of (10) 1/2" bolts are required.	3/8" THRU BOLTS w/ 1" angle iron backer A minimum of (10) 3/8" bolts are required.	3/8" THRU BOLTS w/ 3" angle iron backer A minimum of (10) 3/8" bolts are required.
100 SQ. FT. TO 200 SQ. FT.	1/2" THRU BOLTS w/ 3" angle iron backer A minimum of (1) 1/2" bolt per each 15 sq ft is required.	1/2" THRU BOLTS w/ 3" angle iron backer A minimum of (1) 1/2" bolt per each 15 sq ft is required.	1/2" THRU BOLTS w/ 3" angle iron backer A minimum of (1) 1/2" bolt per each 15 sq ft is required.	1/2" WEDGE ANCHOR A minimum of (1) 1/2" bolt per each 15 sq ft is required.	1/2" WEDGE ANCHOR A minimum of (1) 1/2" bolt per each 15 sq ft is required.	1/2" THRU BOLTS w/ 3" angle iron backer A minimum of (1) 1/2" bolt per each 15 sq ft is required.	REQUIRES SPECIAL ENGINEERING
OVER 200 SQ. FT.	REQUIRES SPECIAL ENGINEERING	REQUIRES SPECIAL ENGINEERING	REQUIRES SPECIAL ENGINEERING	1/2" THRU BOLTS w/ at least 3" angle iron backer A minimum of (1) 1/2" bolt per each 15 sq ft is required.	1/2" THRU BOLTS w/ at least 3" angle iron backer A minimum of (1) 1/2" bolt per each 15 sq ft is required.	REQUIRES SPECIAL ENGINEERING	REQUIRES SPECIAL ENGINEERING

## REQUIRED FASTENER TYPE

### 3/8" EXPANSION ANCHORS



EXPANSION ANCHOR (FASTENER) DETAIL - QTY: (4) MINIMUM PER LETTER

NTS

☒ .040 ☐ .063 ALUMINUM  
BACKS & RETURNS  
COLOR - **PMS 424C DARK GRAY SEMI GLOSS**

2" JEWELITE TRIMCAP  
COLOR - **PMS 424C DARK GRAY SEMI GLOSS**

TRANSLUCENT PLEX FACES  
THICKNESS - ☒ 3/16" ☐ 1/8"  
COLOR - **LETTERS = WHITE**  
**LOGO = WHITE + PMS 312C BLUE**  
**OVERLAY BY MIRATEC**

LED ILLUMINATION  
COLOR - **WHITE**

NON-CORROSIVE  
FASTENERS AS REQ'D.

1/4" WEEP HOLES  
☒ YES ☐ NO

LOCKABLE DISCONNECT  
IN COMPLIANCE WITH  
NEC 600.6(2) AND 110.25

REMOTE POWER SUPPLY UNITS.  
120 VAC PRIMARY  
24volt DC SECONDARY.  
NUMBER REQ'D. = \_\_\_\_\_

PRIMARY ELECTRICAL  
THROUGH WALL IN  
CONDUIT TO SOURCE.  
\* SEAL PENETRATIONS  
WITH SILICONE.

☒ YES ☐ NO

CLN  
☐ YES ☐ NO

NON-CORROSIVE  
FASTENERS AS REQ'D.

SECTION DETAIL - PLEX FACE CHANNEL LETTERS w/ LED ILLUMINATION

Scale: NTS

DATE	REVISIONS	NAME
02-17-2022	REVISE W/ UPDATED POLE FACE LAYOUT	1 KD
02-17-2022	REVISE POLE SIGN W/ 2 OPTIONS	1 1/2 KD
02-17-2022	REVISE POLE SIGN FROM PROVIDED IMAGE	3/4 KD
02-18-2022	REVISE POLE SIGN CABINET OFF-SET FROM POLE/ PIPE	1 KD
02-18-2022	REPLACE FRONT ELEVATION W/ PROVIDED INCLUDING CANOPIES	1 KD
02-21-2022	ADD IN PREVIOUS POLE SIGN OPTION TO CURRENT DRAWING	1 KD
04-07-2022	REVISE FROM POLE SIGN TO MONUMENT SIGN (E)	1 KD
08-01-2022	REVISE MNMT. HEIGHT AND DEPICT SETBACK	1 KD

AUTHORIZATION	
CLIENT	DATE
ACCOUNT EXECUTIVE	DATE
LANDLORD	DATE
ALL CHANGES MUST BE INITIALED BY CLIENT AND ACCOUNT EXECUTIVE ON FINAL APPROVED PRINT.	

This drawing is the exclusive property of Accent Graphics, Inc. and is the result of the original work of its employees. The plans are provided to your company for the sole purpose of considering the purchase of a sign manufactured by Accent Graphics, Inc. based on these plans. OR the purchase of the plans and design concepts contained therein for manufacture elsewhere. Distribution or exhibition of the plans to anyone outside of your company or the use of the plans by others to manufacture or design a similar sign as displayed in the plans is expressly forbidden. In the event that such exhibition occurs, Accent Graphics will expect payment of a minimum \$2000 design fee in recompense for the time and effort entailed to produce the plans.

CLIENT \_\_\_\_\_ at home \_\_\_\_\_ STORE # \_\_\_\_\_  
INSTALLATION ADDRESS \_\_\_\_\_  
730 E Rand Road | Arlington Heights, IL 60004  
DESIGNER \_\_\_\_\_ KD \_\_\_\_\_ ACCOUNT EXECUTIVE \_\_\_\_\_ DM  
DATE 12-29-2021 SHEET 1 OF 12 DESIGN # 211416-10  
Gerber FILE =  
Corel FILE =

**accent signs graphics**  
COMPLETE SIGN SERVICE & FABRICATION  
523 E. ROCK ISLAND  
GRAND PRAIRIE, TX 75050  
TOLL FREE (800) 810-3044  
METRO (972) 399-0333  
FAX (972) 986-4456  
WEBSITE www.accentgraphicsinc.com  
FAX (800) 810-3045

44'-7"

The Home Décor Superstore

1" JEWELITE TRIMCAP - 28" LETTERS

**B** PLEX FACE CHANNEL LETTERS  
(1) SET REQUIRED

104 Sq Ft

Scale: 1/4" = 1'-0"

**INSTALLATION REQUIREMENTS** for all signs unless specified otherwise on individual sign specifications.  
Variation from this criteria without written approval from Accent Graphics is strictly forbidden.  
\* All freestanding signs are to be engineered for local conditions by a licensed and registered engineer.

SIGN SIZE	MOUNTING SURFACE							
	SQUARE FOOTAGE	WOOD	SHEET METAL	BRICK	CONCRETE	CONCRETE BLOCK	DRYVIT / EIFIS	STUCCO over wire mesh
	UNDER 10 SQ. FT.	3/8" THRU BOLTS w/ 2" angle iron backer A minimum of ( 4 ) 3/8" bolts are required.	3/8" THRU BOLTS w/ 2" angle iron backer A minimum of ( 4 ) 3/8" bolts are required.	3/8" LEAD ANCHORS A minimum of ( 4 ) 3/8" bolts are required.	3/8" LEAD ANCHORS A minimum of ( 4 ) 3/8" bolts are required.	3/8" TOGGLE A minimum of ( 4 ) 3/8" bolts are required.	3/8" THRU BOLTS w/ 2" angle iron backer A minimum of ( 4 ) 3/8" bolts are required.	3/8" THRU BOLTS w/ 2" angle iron backer A minimum of ( 4 ) 3/8" bolts are required.
	10 SQ. FT. TO 50 SQ. FT.	3/8" THRU BOLTS w/ 2" angle iron backer A minimum of ( 4 ) 3/8" bolts are required.	3/8" THRU BOLTS w/ 2" angle iron backer A minimum of ( 4 ) 3/8" bolts are required.	3/8" LEAD ANCHORS A minimum of ( 4 ) 3/8" bolts are required.	3/8" LEAD ANCHORS A minimum of ( 4 ) 3/8" bolts are required.	3/8" TOGGLE A minimum of ( 4 ) 3/8" bolts are required.	3/8" THRU BOLTS w/ 2" angle iron backer A minimum of ( 4 ) 3/8" bolts are required.	3/8" THRU BOLTS w/ 2" angle iron backer A minimum of ( 4 ) 3/8" bolts are required.
	50 SQ. FT. TO 100 SQ. FT.	3/8" THRU BOLTS w/ 3" angle iron backer A minimum of ( 10 ) 3/8" bolts are required.	3/8" THRU BOLTS w/ 3" angle iron backer A minimum of ( 10 ) 3/8" bolts are required.	1/2" LEAD ANCHORS A minimum of ( 10 ) 1/2" bolts are required.	1/2" LEAD ANCHORS A minimum of ( 10 ) 1/2" bolts are required.	3/8" THRU BOLTS w/ 1" angle iron backer A minimum of ( 10 ) 3/8" bolts are required.	3/8" THRU BOLTS w/ 2" angle iron backer A minimum of ( 4 ) 3/8" bolts are required.	3/8" THRU BOLTS w/ 3" angle iron backer A minimum of ( 10 ) 3/8" bolts are required.
	100 SQ. FT. TO 200 SQ. FT.	1/2" THRU BOLTS w/ 3" angle iron backer A minimum of ( 1 ) 1/2" bolt per each 15 sq ft is required.	1/2" THRU BOLTS w/ 3" angle iron backer A minimum of ( 1 ) 1/2" bolt per each 15 sq ft is required.	1/2" WEDGE ANCHOR A minimum of ( 1 ) 1/2" bolt per each 15 sq ft is required.	1/2" WEDGE ANCHOR A minimum of ( 1 ) 1/2" bolt per each 15 sq ft is required.	1/2" THRU BOLTS w/ 3" angle iron backer A minimum of ( 1 ) 1/2" bolt per each 15 sq ft is required.	REQUIRES SPECIAL ENGINEERING	REQUIRES SPECIAL ENGINEERING
OVER 200 SQ. FT.	REQUIRES SPECIAL ENGINEERING	REQUIRES SPECIAL ENGINEERING	REQUIRES SPECIAL ENGINEERING	1/2" THRU BOLTS w/ at least 3" angle iron backer A minimum of ( 1 ) 1/2" bolt per each 15 sq ft is required.	1/2" THRU BOLTS w/ at least 3" angle iron backer A minimum of ( 1 ) 1/2" bolt per each 15 sq ft is required.	REQUIRES SPECIAL ENGINEERING	REQUIRES SPECIAL ENGINEERING	REQUIRES SPECIAL ENGINEERING

Backers = 24" or 36" long steel angle iron ( 1/2" x 1 1/2" min )

**NOTE:**  
ACCESS REQUIRED FOR ELECTRICAL & INSTALLATION

☒ .040 ☐ .063 ALUMINUM  
BACKS & RETURNS  
COLOR - **PMS 424C DARK GRAY SEMI GLOSS**

1" JEWELITE TRIMCAP  
COLOR - **PMS 424C DARK GRAY SEMI GLOSS**

TRANSLUCENT PLEX FACES  
THICKNESS - ☒ 3/16" ☐ 1/8"  
COLOR - **LETTERS = WHITE**

LED ILLUMINATION  
COLOR - **WHITE**

NON-CORROSIVE  
FASTENERS AS REQ'D.

1/4" WEEP HOLES  
☒ YES ☐ NO

5" VARIABLE THICKNESS

LOCKABLE DISCONNECT IN COMPLIANCE WITH NEC 600.6(2) AND 110.25

REMOTE POWER SUPPLY UNITS.  
120 VAC PRIMARY  
24volt DC SECONDARY.  
NUMBER REQ'D. = \_\_\_\_\_

PRIMARY ELECTRICAL THROUGH WALL IN CONDUIT TO SOURCE.  
\* SEAL PENETRATIONS WITH SILICONE.

  **MET Laboratories**

☒ YES  
☐ NO

**CLN**  
☐ YES ☐ NO

NON-CORROSIVE  
FASTENERS AS REQ'D.

SECTION DETAIL - PLEX FACE CHANNEL LETTERS w/ LED ILLUMINATION

Scale: NTS

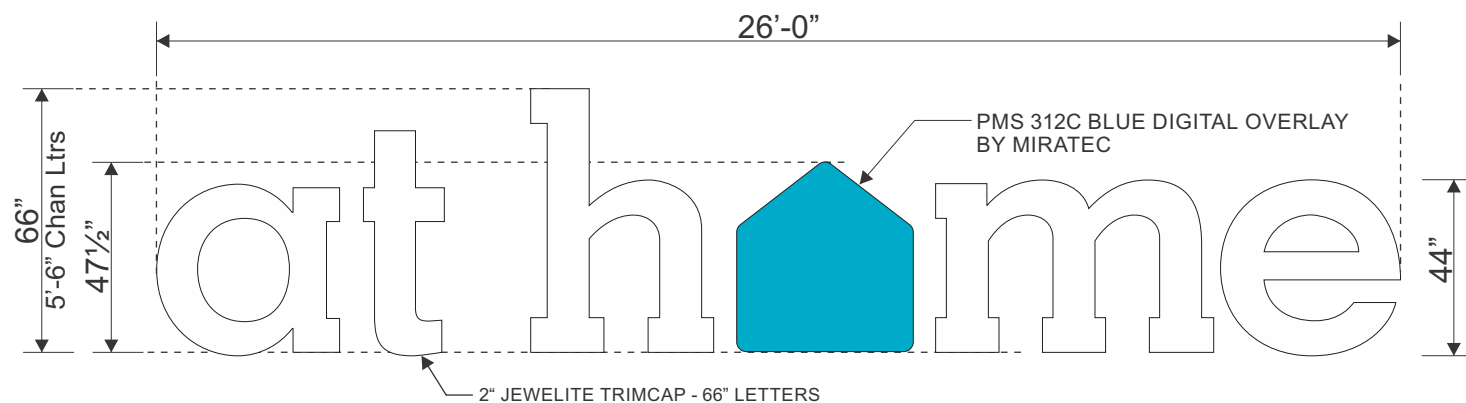
DATE	REVISIONS	NAME
02-17-2022	REVISE W/ UPDATED POLE FACE LAYOUT	1 KD
02-17-2022	REVISE POLE SIGN W/ 2 OPTIONS	1 1/2 KD
02-17-2022	REVISE POLE SIGN FROM PROVIDED IMAGE	3/4 KD
02-18-2022	REVISE POLE SIGN CABINET OFF-SET FROM POLE/ PIPE	1 KD
02-18-2022	REPLACE FRONT ELEVATION W/ PROVIDED INCLUDING CANOPIES	1 KD
02-21-2022	ADD IN PREVIOUS POLE SIGN OPTION TO CURRENT DRAWING	1 KD
04-07-2022	REVISE FROM POLE SIGN TO MONUMENT SIGN (E)	1 KD
08-01-2022	REVISE MNMT. HEIGHT AND DEPICT SETBACK	1 KD

AUTHORIZATION	
CLIENT	DATE
ACCOUNT EXECUTIVE	DATE
LANDLORD	DATE
ALL CHANGES MUST BE INITIALED BY CLIENT AND ACCOUNT EXECUTIVE ON FINAL APPROVED PRINT.	

This drawing is the exclusive property of Accent Graphics, Inc. and is the result of the original work of its employees. The plans are provided to your company for the sole purpose of considering the purchase of a sign manufactured by Accent Graphics, Inc. based on these plans. OR the purchase of the plans and design concepts contained therein for manufacture elsewhere. Distribution or exhibition of the plans to anyone outside of your company or the use of the plans by others to manufacture or design a similar sign as displayed in the plans is expressly forbidden. In the event that such exhibition occurs, Accent Graphics will expect payment of a minimum \$2000 design fee in recompense for the time and effort entailed to produce the plans.

CLIENT \_\_\_\_\_ at home \_\_\_\_\_ STORE # \_\_\_\_\_  
INSTALLATION ADDRESS \_\_\_\_\_  
730 E Rand Road | Arlington Heights, IL 60004  
DESIGNER \_\_\_\_\_ KD \_\_\_\_\_ ACCOUNT EXECUTIVE \_\_\_\_\_ DM  
DATE 12-29-2021 SHEET 2 OF 12 DESIGN # 211416-10  
Gerber FILE =  
Corel FILE =

**accent  graphics**  
**COMPLETE SIGN SERVICE & FABRICATION**  
523 E. ROCK ISLAND  
GRAND PRAIRIE, TX 75050  
TOLL FREE (800) 810-3044  
METRO (972) 399-0333  
FAX (972) 986-4456  
EMAIL  
WEBSITE www.accentgraphicsinc.com FAX (800) 810-3045



**D** PLEX FACE CHANNEL LETTERS  
(1) SET REQUIRED  
142.77 Sq Ft  
Scale: 1/4" = 1'-0"

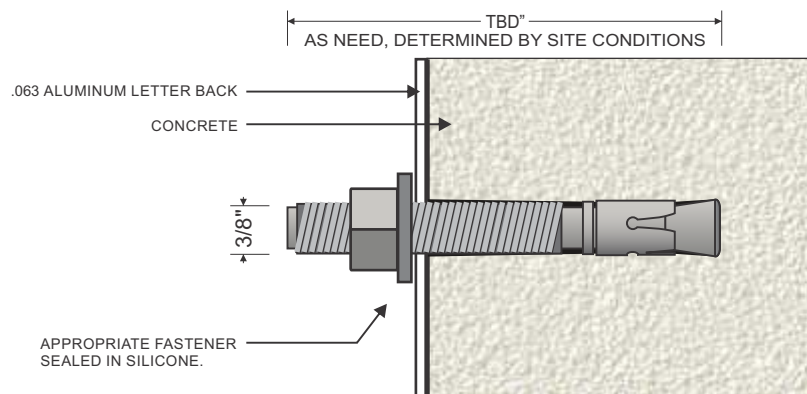
**INSTALLATION REQUIREMENTS** for all signs unless specified otherwise on individual sign specifications.  
Variation from this criteria without written approval from Accent Graphics is strictly forbidden.  
\* All freestanding signs are to be engineered for local conditions by a licensed and registered engineer.

SIGN SIZE	MOUNTING SURFACE							
	SQUARE FOOTAGE	WOOD	SHEET METAL	BRICK	CONCRETE	CONCRETE BLOCK	DRYVIT / EIFS	STUCCO over wire mesh
	UNDER 10 SQ. FT.	3/8" THRU BOLTS w/ 2" angle iron backer A minimum of (4) 3/8" bolts are required.	3/8" THRU BOLTS w/ 2" angle iron backer A minimum of (4) 3/8" bolts are required.	3/8" LEAD ANCHORS A minimum of (4) 3/8" bolts are required.	3/8" LEAD ANCHORS A minimum of (4) 3/8" bolts are required.	3/8" TOGGLE A minimum of (4) 3/8" bolts are required.	3/8" THRU BOLTS w/ 2" angle iron backer A minimum of (4) 3/8" bolts are required.	3/8" THRU BOLTS w/ 2" angle iron backer A minimum of (4) 3/8" bolts are required.
10 SQ. FT. TO 50 SQ. FT.	3/8" THRU BOLTS w/ 2" angle iron backer A minimum of (4) 3/8" bolts are required.	3/8" THRU BOLTS w/ 2" angle iron backer A minimum of (4) 3/8" bolts are required.	3/8" THRU BOLTS w/ 2" angle iron backer A minimum of (4) 3/8" bolts are required.	3/8" LEAD ANCHORS A minimum of (4) 3/8" bolts are required.	3/8" LEAD ANCHORS A minimum of (4) 3/8" bolts are required.	3/8" TOGGLE A minimum of (4) 3/8" bolts are required.	3/8" THRU BOLTS w/ 2" angle iron backer A minimum of (4) 3/8" bolts are required.	3/8" THRU BOLTS w/ 2" angle iron backer A minimum of (4) 3/8" bolts are required.
50 SQ. FT. TO 100 SQ. FT.	3/8" THRU BOLTS w/ 3" angle iron backer A minimum of (10) 3/8" bolts are required.	3/8" THRU BOLTS w/ 3" angle iron backer A minimum of (10) 3/8" bolts are required.	1/2" LEAD ANCHORS A minimum of (10) 1/2" bolts are required.	1/2" LEAD ANCHORS A minimum of (10) 1/2" bolts are required.	3/8" THRU BOLTS w/ 1" angle iron backer A minimum of (10) 3/8" bolts are required.	3/8" THRU BOLTS w/ 1" angle iron backer A minimum of (10) 3/8" bolts are required.	3/8" THRU BOLTS w/ 2" angle iron backer A minimum of (10) 3/8" bolts are required.	3/8" THRU BOLTS w/ 2" angle iron backer A minimum of (10) 3/8" bolts are required.
100 SQ. FT. TO 200 SQ. FT.	1/2" THRU BOLTS w/ 3" angle iron backer A minimum of (1) 1/2" bolt per each 15 sq ft is required.	1/2" THRU BOLTS w/ 3" angle iron backer A minimum of (1) 1/2" bolt per each 15 sq ft is required.	1/2" WEDGE ANCHOR A minimum of (1) 1/2" bolt per each 15 sq ft is required.	1/2" WEDGE ANCHOR A minimum of (1) 1/2" bolt per each 15 sq ft is required.	1/2" THRU BOLTS w/ 3" angle iron backer A minimum of (1) 1/2" bolt per each 15 sq ft is required.	REQUIRES SPECIAL ENGINEERING	REQUIRES SPECIAL ENGINEERING	REQUIRES SPECIAL ENGINEERING
OVER 200 SQ. FT.	REQUIRES SPECIAL ENGINEERING	REQUIRES SPECIAL ENGINEERING	1/2" THRU BOLTS w/ at least 3" angle iron backer A minimum of (1) 1/2" bolt per each 15 sq ft is required.	1/2" THRU BOLTS w/ at least 3" angle iron backer A minimum of (1) 1/2" bolt per each 15 sq ft is required.	REQUIRES SPECIAL ENGINEERING	REQUIRES SPECIAL ENGINEERING	REQUIRES SPECIAL ENGINEERING	REQUIRES SPECIAL ENGINEERING

Backers = 24" or 36" long steel angle iron (1/2" x 1 1/2" min.)

## REQUIRED FASTENER TYPE

### 3/8" EXPANSION ANCHORS



EXPANSION ANCHOR (FASTENER) DETAIL - QTY: (4) MINIMUM PER LETTER

NTS

**NOTE:**  
ACCESS REQUIRED FOR  
ELECTRICAL & INSTALLATION

☒ .040 ☐ .063 ALUMINUM  
BACKS & RETURNS  
COLOR - **PMS 424C DARK GRAY SEMI GLOSS**

2" JEWELITE TRIMCAP  
COLOR - **PMS 424C DARK GRAY SEMI GLOSS**

TRANSLUCENT PLEX FACES  
THICKNESS - ☒ 3/16" ☐ 1/8"  
COLOR - **LETTERS = WHITE**  
**LOGO = WHITE + PMS 312C BLUE**  
**OVERLAY BY MIRATEC**

LED ILLUMINATION  
COLOR - **WHITE**

NON-CORROSIVE  
FASTENERS AS REQ'D.

1/4" WEEP HOLES  
☒ YES ☐ NO

5" VARIABLE THICKNESS

LOCKABLE DISCONNECT  
IN COMPLIANCE WITH  
NEC 600.6(2) AND 110.25

REMOTE POWER SUPPLY UNITS.  
120 VAC PRIMARY  
24volt DC SECONDARY.  
NUMBER REQ'D. = \_\_\_\_\_

PRIMARY ELECTRICAL  
THROUGH WALL IN  
CONDUIT TO SOURCE.  
\* SEAL PENETRATIONS  
WITH SILICONE.

**MET** **us** **MET**  
**Laboratories**

☒ YES  
☐ NO

**CLN**  
☐ YES ☐ NO

NON-CORROSIVE  
FASTENERS AS REQ'D.

SECTION DETAIL - PLEX FACE CHANNEL LETTERS w/ LED ILLUMINATION

Scale: NTS

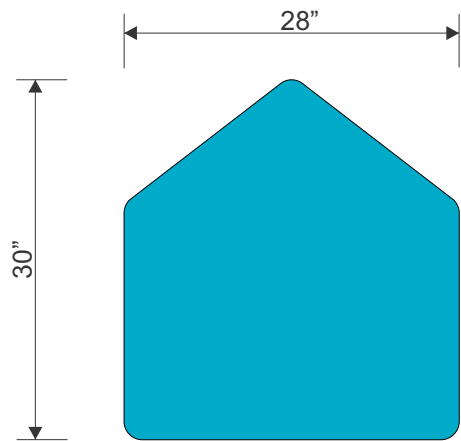
DATE	REVISIONS	NAME
02-17-2022	REVISE W/ UPDATED POLE FACE LAYOUT	1 KD
02-17-2022	REVISE POLE SIGN W/ 2 OPTIONS	1 1/2 KD
02-17-2022	REVISE POLE SIGN FROM PROVIDED IMAGE	3/4 KD
02-18-2022	REVISE POLE SIGN CABINET OFF-SET FROM POLE/ PIPE	1 KD
02-18-2022	REPLACE FRONT ELEVATION W/ PROVIDED INCLUDING CANOPIES	1 KD
02-21-2022	ADD IN PREVIOUS POLE SIGN OPTION TO CURRENT DRAWING	1 KD
04-07-2022	REVISE FROM POLE SIGN TO MONUMENT SIGN (E)	1 KD
08-01-2022	REVISE MNMT. HEIGHT AND DEPICT SETBACK	1 KD

AUTHORIZATION	
CLIENT	DATE
ACCOUNT EXECUTIVE	DATE
LANDLORD	DATE
ALL CHANGES MUST BE INITIALED BY CLIENT AND ACCOUNT EXECUTIVE ON FINAL APPROVED PRINT.	

This drawing is the exclusive property of Accent Graphics, Inc. and is the result of the original work of its employees. The plans are provided to your company for the sole purpose of considering the purchase of a sign manufactured by Accent Graphics, Inc. based on these plans. **OR** the purchase of the plans and design concepts contained therein for manufacture elsewhere. Distribution or exhibition of the plans to anyone outside of your company or the use of the plans by others to manufacture or design a similar sign as displayed in the plans is expressly forbidden. In the event that such exhibition occurs, Accent Graphics will expect payment of a minimum \$2000 design fee in recompense for the time and effort entailed to produce the plans.

CLIENT \_\_\_\_\_ at home \_\_\_\_\_ STORE # \_\_\_\_\_  
INSTALLATION ADDRESS \_\_\_\_\_  
730 E Rand Road | Arlington Heights, IL 60004  
DESIGNER \_\_\_\_\_ KD \_\_\_\_\_ ACCOUNT EXECUTIVE \_\_\_\_\_ DM  
DATE 12-29-2021 SHEET 4 OF 12 DESIGN # 211416-10  
Gerber FILE =  
Corel FILE =

**accent** **signs** **graphics**  
**COMPLETE SIGN SERVICE & FABRICATION**  
523 E. ROCK ISLAND  
GRAND PRAIRIE, TX 75050  
TOLL FREE (800) 810-3044  
METRO (972) 399-0333  
FAX (972) 986-4456  
EMAIL  
WEBSITE www.accentgraphicsinc.com  
FAX (800) 810-3045



- \* FACE LIT & HALO LIT ICON WITH SCONCE LIGHTING OUT THE TOP AND BOTTOM.
- \* 5" DEEP .063 ALUMINUM RETURNS. PAINTED - PMS 312 BLUE.
- \* 3/16" WHITE PLEX FACE WITH PMS 312c DIGITAL OVERLAY BY MIRATEC.
- \* 1" TRIMCAP. PAINTED - PMS 312 BLUE.
- \* .188 CLEAR LEXAN BACK.
- \* WHITE LED LIGHTING.
- \* .115 CLEAR LEXAN WINDOWS IN TOP & BOTTOM RETURNS FOR SCONCE LIGHTING (See Section Detail).
- \* STUD MOUNTED WITH 1½" STANDOFF FROM WALL.

The Icons (Light Sconces) will draw 1.5 amps each @ 120 volts

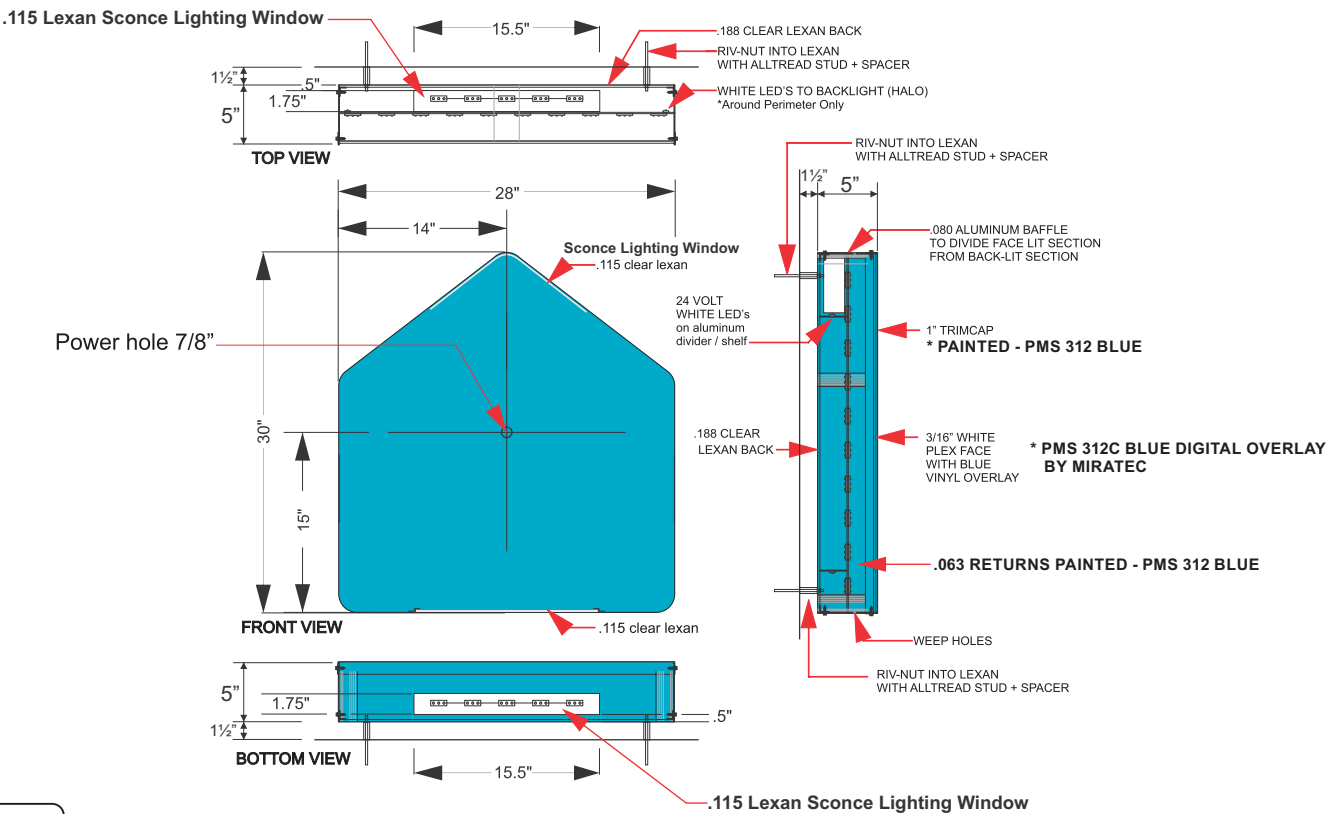
C

ICON SHAPED SCONCE LIGHTING

( 3 ) REQUIRED

5.83 Sq Ft

Scale: ¾" = 1'-0"



**NOTE:**  
ACCESS REQUIRED FOR  
ELECTRICAL & INSTALLATION

SECTION DETAILS – ICON SHAPED SCONCE LIGHTING

Scale: ¾" = 1'-0"

DATE	REVISIONS	NAME
02-17-2022	REVISE W/ UPDATED POLE FACE LAYOUT	1 KD
02-17-2022	REVISE POLE SIGN W/ 2 OPTIONS	1½ KD
02-17-2022	REVISE POLE SIGN FROM PROVIDED IMAGE	¾ KD
02-18-2022	REVISE POLE SIGN CABINET OFF-SET FROM POLE/ PIPE	1 KD
02-18-2022	REPLACE FRONT ELEVATION W/ PROVIDED INCLUDING CANOPIES	1 KD
02-21-2022	ADD IN PREVIOUS POLE SIGN OPTION TO CURRENT DRAWING	1 KD
04-07-2022	REVISE FROM POLE SIGN TO MONUMENT SIGN (E)	1 KD
08-01-2022	REVISE MNMT. HEIGHT AND DEPICT SETBACK	1 KD

AUTHORIZATION	
CLIENT	DATE
ACCOUNT EXECUTIVE	DATE
LANDLORD	DATE

This drawing is the exclusive property of Accent Graphics, Inc. and is the result of the original work of its employees. The plans are provided to your company for the sole purpose of considering the purchase of a sign manufactured by Accent Graphics, Inc. based on these plans. OR the purchase of the plans and design concepts contained therein for manufacture elsewhere. Distribution or exhibition of the plans to anyone outside of your company or the use of the plans by others to manufacture or design a similar sign as displayed in the plans is expressly forbidden. In the event that such exhibition occurs, Accent Graphics will expect payment of a minimum \$2000 design fee in recompense for the time and effort entailed to produce the plans.

CLIENT \_\_\_\_\_ at home \_\_\_\_\_ STORE # \_\_\_\_\_

INSTALLATION ADDRESS \_\_\_\_\_  
730 E Rand Road | Arlington Heights, IL 60004

DESIGNER \_\_\_\_\_ KD \_\_\_\_\_ ACCOUNT EXECUTIVE \_\_\_\_\_ DM \_\_\_\_\_

DATE 12-29-2021 SHEET 3 OF 12 DESIGN # 211416-10

Gerber FILE = \_\_\_\_\_

Corel FILE = \_\_\_\_\_

accent

SIGNS

graphics

COMPLETE SIGN SERVICE & FABRICATION

523 E. ROCK ISLAND  
GRAND PRAIRIE, TX 75050

TOLL FREE (800) 810-3044  
METRO (972) 399-0333  
FAX (972) 986-4456  
FAX (800) 810-3045

EMAIL  
WEBSITE www.accentgraphicsinc.com