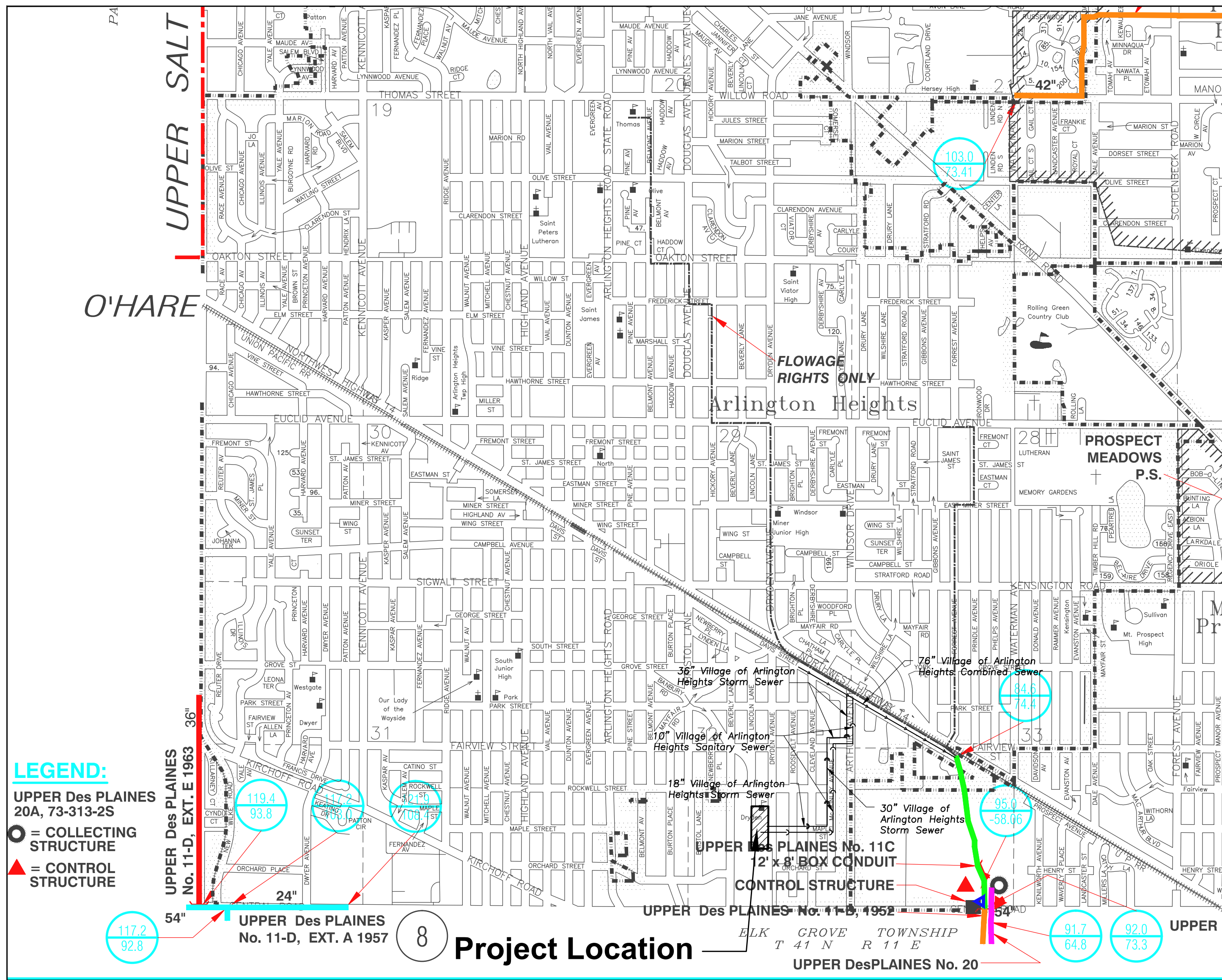
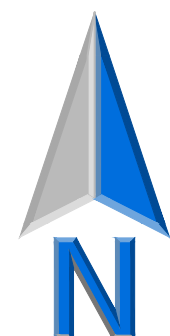


DRYDEN ELEMENTARY SCHOOL BUILDING ADDITION AND RENOVATIONS

722 S. Dryden Place
Arlington Heights, IL 60005



DRYDEN ELEMENTARY SCHOOL
BUILDING ADDITION AND RENOVATIONS
722 S. DRYDEN PLACE
ARLINGTON HEIGHTS, ILLINOIS



CIVIL SHEET INDEX

C000	CIVIL COVER SHEET
C001	TOPOGRAPHIC SURVEY
C002	MWD GENERAL NOTES
C101	SITE DEMOLITION PLAN
C201	SITE GEOMETRY PLAN
C301	SITE UTILITY PLAN
C401	SITE GRADING AND PAVING PLAN
C501	SITE EROSION AND CONTROL PLAN
C601	SITE WORK DETAILS
C602	SITE WORK DETAILS
CX001	VILLAGE FIRE TRUCK EXHIBIT

LANDSCAPE SHEET INDEX

L101	Landscape Plan
L201	Landscape Details

Contact the Metropolitan
Water Reclamation District
of Greater Chicago 2 days
before starting work.

P (708) 588-4055
E WMOJobStart@mwrd.org

SURVEY PROVIDED BY:

Plot of Survey and Topography Provided By R.E. Allen and
Associates, Ltd. For Arlington Heights School District 25 On
October 03, 2022. Order Number 14122.

PROJECT BENCHMARKS

Source Benchmark:
Village Of Arlington Heights Benchmark Recovery Sheet
Benchmark Designation: 52
At Cambell Street And Wilke Road.
Elevation = 707.58 NAVD88

Site Benchmark:
Survey Control Point, Cut Cross On The East Side Of
Sidewalk.
Elevation = 683.28 NAVD88
Easting: 1082629.82
Northing: 1968720.28

Site Benchmark:
Survey Control Point, MAG Nail In Pavement.
Elevation = 686.60 NAVD88
Easting: 1082615.19
Northing: 1967766.82

J.U.L.I.E.

Note: The Exact Location Of All Utilities Shall Be Verified By
The Contractor Prior To Construction Activities. For Utility
Locations Call: J.U.L.I.E. 1 (800) 892-0123

DRAINAGE STATEMENT

To The Best Of Our Knowledge And Belief, It Is Our Professional Opinion That The Proposed
Improvements On The Property Are Not Within One-Hundred (100) Feet Of A Known Flood
Protection Area. The Drainage Of The Surface Waters Will Not Be Changed By The
Construction Of This Development Or Any Part Thereof, Or That If Such Surface Water
Drainage Will Be Changed, Reasonable Provisions Have Been Made For The Collection And
Diversion Of Such Surface Waters Into Public Areas Or Drains Which The Property Owner Has
A Right To Use, And That Such Surface Waters Will Be Planned For In Accordance With
Generally Accepted Engineering Practices So As To Reduce The Likelihood Of Damage To The
Adjoining Property Because Of The Construction Of The Development.

Reserved for Seal:

No.	Date	Description
11/17/22	11/17/22	ISSUE FOR PLAN COMMISSION
01/06/23	01/06/23	REVISED FOR PLAN COMMISSION
01/18/23	01/18/23	REVISED FOR PLAN COMMISSION

Design By:	Approved By:	Date:
RMS	TLH	11/17/22

Sheet Title:

CIVIL COVER
SHEET

Sheet No:

C000

NOT FOR CONSTRUCTION

A. REFERENCED SPECIFICATIONS

1. ALL CONSTRUCTION SHALL BE IN ACCORDANCE WITH THE APPLICABLE SECTIONS OF THE FOLLOWING, EXCEPT AS MODIFIED HEREIN OR ON THE PLANS:
- * STANDARD SPECIFICATIONS FOR ROAD AND BRIDGE CONSTRUCTION (LATEST EDITION), BY THE ILLINOIS DEPARTMENT OF TRANSPORTATION (IDOT SS) FOR ALL IMPROVEMENTS EXCEPT SANITARY SEWER AND WATER MAIN CONSTRUCTION;
 - * STANDARD SPECIFICATIONS FOR WATER AND SEWER MAIN CONSTRUCTION IN ILLINOIS, LATEST EDITION (SSWS) FOR SANITARY SEWER AND WATER MAIN CONSTRUCTION;
 - * VILLAGE OF ARLINGTON HEIGHTS MUNICIPAL CODE;
 - * THE METROPOLITAN WATER RECLAMATION DISTRICT OF GREATER CHICAGO (MWRD) WATERSHED MANAGEMENT ORDINANCE AND TECHNICAL GUIDANCE MANUAL;
 - * IN CASE OF CONFLICT BETWEEN THE APPLICABLE ORDINANCES NOTED, THE MORE STRINGENT SHALL TAKE PRECEDENCE AND SHALL CONTROL ALL CONSTRUCTION.

B. NOTIFICATIONS

1. THE MWRD LOCAL SEWER SYSTEMS SECTION FIELD OFFICE MUST BE NOTIFIED AT LEAST TWO (2) WORKING DAYS PRIOR TO THE COMMENCEMENT OF ANY WORK (CALL 708-588-4055 OR SEND EMAIL NOTIFICATION WITH PROJECT NAME, LOCATION AND PERMIT NUMBER TO WMOJOBSTART@MWRD.ORG).
2. THE VILLAGE OF ARLINGTON HTS ENGINEERING DEPARTMENT AND PUBLIC MUST BE NOTIFIED AT LEAST 24 HOURS PRIOR TO THE START OF CONSTRUCTION AND PRIOR TO EACH PHASE OF WORK. CONTRACTOR SHALL DETERMINE ITEMS REQUIRING INSPECTION PRIOR TO START OF CONSTRUCTION OR EACH WORK PHASE.
3. THE CONTRACTOR SHALL NOTIFY ALL UTILITY COMPANIES PRIOR TO BEGINNING CONSTRUCTION FOR THE EXACT LOCATIONS OF UTILITIES AND FOR THEIR PROTECTION DURING CONSTRUCTION. IF EXISTING UTILITIES ARE ENCOUNTERED THAT CONFLICT IN LOCATION WITH NEW CONSTRUCTION, IMMEDIATELY NOTIFY THE ENGINEER SO THAT THE CONFLICT CAN BE RESOLVED. CALL J.U.L.I.E. AT 1-800-892-0123.

C. GENERAL NOTES

1. ALL ELEVATIONS SHOWN ON PLANS REFERENCE THE NORTH AMERICAN VERTICAL DATUM OF 1988 (NAVD88). CONVERSION FACTOR IS 0.00 FT.
2. MWRD, THE MUNICIPALITY AND THE OWNER OR OWNER'S REPRESENTATIVE SHALL HAVE THE AUTHORITY TO INSPECT, APPROVE, AND REJECT THE CONSTRUCTION IMPROVEMENTS.
3. THE CONTRACTOR(S) SHALL INDEMNIFY THE OWNER, ENGINEER, MUNICIPALITY, MWRD, AND THEIR AGENTS, ETC., FROM ALL LIABILITY INVOLVED WITH THE CONSTRUCTION, INSTALLATION, OR TESTING OF THIS WORK ON THE PROJECT.
4. THE PROPOSED IMPROVEMENTS MUST BE CONSTRUCTED IN ACCORDANCE WITH THE ENGINEERING PLANS AS APPROVED BY MWRD AND THE MUNICIPALITY UNLESS CHANGES ARE APPROVED BY MWRD, THE MUNICIPALITY, OR AUTHORIZED AGENT. THE CONSTRUCTION DETAILS, AS PRESENTED ON THE PLANS, MUST BE FOLLOWED. PROPER CONSTRUCTION TECHNIQUES MUST BE FOLLOWED ON THE IMPROVEMENTS INDICATED ON THE PLANS.
5. THE LOCATION OF VARIOUS UNDERGROUND UTILITIES WHICH ARE SHOWN ON THE PLANS ARE FOR INFORMATION ONLY AND REPRESENT THE BEST KNOWLEDGE OF THE ENGINEER. VERIFY LOCATIONS AND ELEVATIONS PRIOR TO BEGINNING THE CONSTRUCTION OPERATIONS.
6. ANY EXISTING PAVEMENT, SIDEWALK, DRIVEWAY, ETC., DAMAGED DURING CONSTRUCTION OPERATIONS AND NOT CALLED FOR TO BE REMOVED SHALL BE REPLACED AT THE EXPENSE OF THE CONTRACTOR.
7. MATERIAL AND COMPACTION TESTING SHALL BE PERFORMED IN ACCORDANCE WITH THE REQUIREMENTS OF THE MUNICIPALITY, MWRD, AND OWNER.
8. THE UNDERGROUND CONTRACTOR SHALL MAKE ALL NECESSARY ARRANGEMENTS TO NOTIFY ALL INSPECTION AGENCIES.
9. ALL NEW AND EXISTING UTILITY STRUCTURES ON SITE AND IN AREAS DISTURBED DURING CONSTRUCTION SHALL BE ADJUSTED TO FINISH GRADE PRIOR TO FINAL INSPECTION.
10. RECORD DRAWINGS SHALL BE KEPT BY THE CONTRACTOR AND SUBMITTED TO THE ENGINEER AS SOON AS UNDERGROUND IMPROVEMENTS ARE COMPLETED. FINAL PAYMENTS TO THE CONTRACTOR SHALL BE HELD UNTIL THEY ARE RECEIVED. ANY CHANGES IN LENGTH, LOCATION OR ALIGNMENT SHALL BE SHOWN IN RED. ALL VYES OR BENDS SHALL BE LOCATED FROM THE DOWNSTREAM MANHOLE. ALL VALVES, B-BOXES, TEES OR BENDS SHALL BE TIED TO A FIRE HYDRANT.

D. SANITARY SEWER

1. THE CONTRACTOR SHALL TAKE MEASURES TO PREVENT ANY POLLUTED WATER, SUCH AS GROUND AND SURFACE WATER, FROM ENTERING THE EXISTING SANITARY SEWERS.
2. A WATER-TIGHT PLUG SHALL BE INSTALLED IN THE DOWNSTREAM SEWER PIPE AT THE POINT OF SEWER CONNECTION PRIOR TO COMMENCING ANY SEWER CONSTRUCTION. THE PLUG SHALL REMAIN IN PLACE UNTIL REMOVAL IS AUTHORIZED BY THE MUNICIPALITY AND/OR MWRD AFTER THE SEWERS HAVE BEEN TESTED AND ACCEPTED.
3. DISCHARGING ANY UNPOLLUTED WATER INTO THE SANITARY SEWER SYSTEM FOR THE PURPOSE OF SEWER FLUSHING OF LINES FOR THE DEFLECTION TEST SHALL BE PROHIBITED WITHOUT PRIOR APPROVAL FROM THE MUNICIPALITY OR MWRD.
4. ALL SANITARY SEWER CONSTRUCTION SHALL BE IN ACCORDANCE WITH THE STANDARD SPECIFICATIONS FOR WATER AND SEWER MAIN CONSTRUCTION IN ILLINOIS (LATEST EDITION).
5. ALL FLOOR DRAINS SHALL DISCHARGE TO THE SANITARY SEWER SYSTEM.
6. ALL DOWNSPOUTS AND FOOTING DRAINS SHALL DISCHARGE TO THE STORM SEWER SYSTEM.
7. ALL SANITARY SEWER PIPE MATERIALS AND JOINTS (AND STORM SEWER PIPE MATERIALS AND JOINTS IN A COMBINED SEWER AREA) SHALL CONFORM TO THE FOLLOWING:

PIPE MATERIAL PIPE SPECIFICATIONS JOINT SPECIFICATIONS

VITRIFIED CLAY PIPE	ASTM C-700	ASTM C-425
REINFORCED CONCRETE SEWER PIPE	ASTM C-76	ASTM C-443
CAST IRON SOIL PIPE	ASTM A-74	ASTM C-564
DUCTILE IRON PIPE	ANSI A21.51	ANSI A21.11
POLYVINYL CHLORIDE (PVC) PIPE 6-INCH TO 15-INCH DIAMETER SDR 26 18-INCH TO 27-INCH DIAMETER F/DY=46	ASTM D-3034 ASTM F-679	ASTM D-3212 ASTM D-3212
HIGH DENSITY POLYETHYLENE (HDPE)	ASTM D-3350 ASTM D-3035	ASTM D-3261,F-2620 (HEAT FUSION) ASTM D-3212,F-477 (GASKETED)
WATER MAIN QUALITY PVC 4-INCH TO 36-INCH 4-INCH TO 12-INCH 14-INCH TO 48-INCH	ASTM D-2241 AWWA C900 AWWA C905	ASTM D-3139 ASTM D-3139 ASTM D-3139

THE FOLLOWING MATERIALS ARE ALLOWED ON A QUALIFIED BASIS SUBJECT TO DISTRICT REVIEW AND APPROVAL PRIOR TO PERMIT ISSUANCE. A SPECIAL CONDITION WILL BE ADDED TO THE PERMIT WHEN THE PIPE MATERIAL BELOW IS USED FOR SEWER CONSTRUCTION OR A CONNECTION IS MADE.

PIPE MATERIAL PIPE SPECIFICATIONS JOINT SPECIFICATIONS

POLYPROPYLENE (PP) PIPE		
12-INCH TO 24-INCH DOUBLE WALL	ASTM F-2736	D-3212, F-477
30-INCH TO 60-INCH TRIPLE WALL	ASTM F-2764	D3212, F-477

8. ALL SANITARY SEWER CONSTRUCTION (AND STORM SEWER CONSTRUCTION IN COMBINED SEWER AREAS), REQUIRES STONE BEDDING WITH STONE ¼" TO 1" IN SIZE, WITH MINIMUM BEDDING THICKNESS EQUAL TO ¼" THE OUTSIDE DIAMETER OF THE SEWER PIPE, BUT NOT LESS THAN FOUR (4) INCHES NOR MORE THAN EIGHT (8) INCHES. MATERIAL SHALL BE CA-7, CA-11 OR CA-13 AND SHALL BE EXTENDED AT LEAST 12" ABOVE THE TOP OF THE PIPE WHEN USING PVC.
9. NON-SHEAR FLEXIBLE-TYPE COUPLINGS SHALL BE USED IN THE CONNECTION OF SEWER PIPES OF DISSIMILAR PIPE MATERIALS.
10. ALL MANHOLES SHALL BE PROVIDED WITH BOLTED, WATERTIGHT COVERS. SANITARY LIDS SHALL BE CONSTRUCTED WITH A CONCEALED PICKHOLE AND WATERTIGHT GASKET WITH THE WORD "SANITARY" CAST INTO THE LID.
11. WHEN CONNECTING TO AN EXISTING SEWER MAIN BY MEANS OTHER THAN AN EXISTING WYE, TEE, OR AN EXISTING MANHOLE, ONE OF THE FOLLOWING METHODS SHALL BE USED:
- a) A CIRCULAR SAW-CUT OF SEWER MAIN BY PROPER TOOLS ("SEWER-TAP" MACHINE OR SIMILAR) AND PROPER INSTALLATION OF HUBWYE SADDLE OR HUB-TEE SADDLE.
 - b) REMOVE AN ENTIRE SECTION OF PIPE (BREAKING ONLY THE TOP OF ONE BELL) AND REPLACE WITH A WYE OR TEE BRANCH SECTION.
 - c) WITH PIPE CUTTER, NEATLY AND ACCURATELY CUT OUT DESIRED LENGTH OF PIPE FOR INSERTION OF PROPER FITTING, USING "BAND SEAL" OR SIMILAR COUPLINGS TO HOLD IT FIRMLY IN PLACE.
12. WHENEVER A SANITARY/COMBINED SEWER CROSSES UNDER A WATERMAIN, THE MINIMUM VERTICAL DISTANCE FROM THE TOP OF THE SEWER TO THE BOTTOM OF THE WATERMAIN SHALL BE 18 INCHES. FURTHERMORE, A MINIMUM HORIZONTAL DISTANCE OF 10 FEET BETWEEN SANITARY/COMBINED SEWERS AND WATERMAINS SHALL BE MAINTAINED UNLESS: THE SEWER IS LAID IN A SEPARATE TRENCH, KEEPING A MINIMUM 18" VERTICAL SEPARATION; OR THE SEWER IS LAID IN THE SAME TRENCH WITH THE WATERMAIN LOCATED AT THE OPPOSITE SIDE ON A BENCH OF UNDISTURBED EARTH, KEEPING A MINIMUM 18" VERTICAL SEPARATION. IF EITHER THE VERTICAL OR HORIZONTAL DISTANCES DESCRIBED CANNOT BE MAINTAINED, OR THE SEWER CROSSES ABOVE THE WATER MAIN, THE SEWER SHALL BE CONSTRUCTED TO WATER MAIN STANDARDS OR IT SHALL BE ENCASED WITH A WATER MAIN QUALITY CARRIER PIPE WITH THE ENDS SEALED.
13. ALL EXISTING SEPTIC SYSTEMS SHALL BE ABANDONED. ABANDONED TANKS SHALL BE FILLED WITH GRANULAR MATERIAL OR REMOVED.
14. ALL SANITARY MANHOLES, (AND STORM MANHOLES IN COMBINED SEWER AREAS), SHALL HAVE A MINIMUM INSIDE DIAMETER OF 48 INCHES, AND SHALL BE CAST IN PLACE OR PRE-CAST REINFORCED CONCRETE.
15. ALL SANITARY MANHOLES, (AND STORM MANHOLES IN COMBINED SEWER AREAS), SHALL HAVE PRECAST "RUBBER BOOTIS" THAT CONFORM TO ASTM C-923 FOR ALL PIPE CONNECTIONS. PRECAST SECTIONS SHALL CONSIST OF MODIFIED GROOVE TONGUE AND RUBBER GASKET TYPE JOINTS.
16. ALL ABANDONED SANITARY SEWERS SHALL BE PLUGGED AT BOTH ENDS WITH AT LEAST 2 FEET LONG NON-SHRINK CONCRETE OR MORTAR PLUG.
17. EXCEPT FOR FOUNDATION/FOOTING DRAINS PROVIDED TO PROTECT BUILDINGS, OR PERFORATED PIPES ASSOCIATED WITH VOLUME CONTROL FACILITIES, DRAIN TILES/FIELD TILES/UNDERDRAINS/PERFORATED PIPES ARE NOT ALLOWED TO BE CONNECTED TO OR TRIBUTARY TO COMBINED SEWERS, SANITARY SEWERS, OR STORM SEWERS TRIBUTARY TO COMBINED SEWERS IN COMBINED SEWER AREAS. CONSTRUCTION OF NEW FACILITIES OF THIS TYPE IS PROHIBITED, AND ALL EXISTING DRAIN TILES AND PERFORATED PIPES ENCOUNTERED WITHIN THE PROJECT AREA SHALL BE PLUGGED OR REMOVED, AND SHALL NOT BE CONNECTED TO COMBINED SEWERS, SANITARY SEWERS, OR STORM SEWERS TRIBUTARY TO COMBINED SEWERS.
18. A BACKFLOW PREVENTER IS REQUIRED FOR ALL DETENTION BASINS TRIBUTARY TO COMBINED SEWERS. REQUIRED BACKFLOW PREVENTERS SHALL BE INSPECTED AND EXERCISED ANNUALLY BY THE PROPERTY OWNER TO ENSURE PROPER OPERATION, AND ANY NECESSARY MAINTENANCES SHALL BE PERFORMED TO ENSURE FUNCTIONALITY. IN THE EVENT OF A SEWER SURCHARGE INTO AN OPEN DETENTION BASIN TRIBUTARY TO COMBINED SEWERS, THE PERMITTEE SHALL ENSURE THAT CLEAN UP AND WASH OUT OF SEWAGE TAKES PLACE WITHIN 48 HOURS OF THE STORM EVENT.

E. EROSION AND SEDIMENT CONTROL

1. THE CONTRACTOR SHALL INSTALL THE EROSION AND SEDIMENT CONTROL DEVICES AS SHOWN ON THE APPROVED EROSION AND SEDIMENT CONTROL PLAN.
2. EROSION AND SEDIMENT CONTROL PRACTICES SHALL BE FUNCTIONAL PRIOR TO HYDROLOGIC DISTURBANCE OF THE SITE.
3. ALL DESIGN CRITERIA, SPECIFICATIONS, AND INSTALLATION OF EROSION AND SEDIMENT CONTROL PRACTICES SHALL BE IN ACCORDANCE WITH THE ILLINOIS URBAN MANUAL.
4. A COPY OF THE APPROVED EROSION AND SEDIMENT CONTROL PLAN SHALL BE MAINTAINED ON THE SITE AT ALL TIMES.
5. INSPECTIONS AND DOCUMENTATION SHALL BE PERFORMED, AT A MINIMUM:
- a) UPON COMPLETION OF INITIAL EROSION AND SEDIMENT CONTROL MEASURES, PRIOR TO ANY SOIL DISTURBANCE.
 - b) ONCE EVERY SEVEN (7) CALENDAR DAYS AND WITHIN 24 HOURS OF THE END OF A STORM EVENT WITH GREATER THAN 0.5 INCH OF RAINFALL OR LIQUID EQUIVALENT PRECIPITATION.
6. SOIL DISTURBANCE SHALL BE CONDUCTED IN SUCH A MANNER AS TO MINIMIZE EROSION. IF STRIPPING, CLEARING, GRADING, OR LANDSCAPING ARE TO BE DONE IN PHASES, THE CO-PERMITTEE SHALL PLAN FOR APPROPRIATE SOIL EROSION AND SEDIMENT CONTROL MEASURES.
7. A STABILIZED MAT OF CRUSHED STONE MEETING THE STANDARDS OF THE ILLINOIS URBAN MANUAL SHALL BE INSTALLED AT ANY POINT WHERE TRAFFIC WILL BE ENTERING OR LEAVING A CONSTRUCTION SITE. SEDIMENT OR SOIL REACHING AN IMPROVED PUBLIC RIGHT-OF-WAY, STREET, ALLEY OR PARKING AREA SHALL BE REMOVED BY SCRAPING OR STREET CLEANING AS ACCUMULATIONS WARRANT AND TRANSPORTED TO A CONTROLLED SEDIMENT DISPOSAL AREA.
8. CONCRETE WASHOUT FACILITIES SHALL BE CONSTRUCTED IN ACCORDANCE WITH THE ILLINOIS URBAN MANUAL AND SHALL BE INSTALLED PRIOR TO ANY ON SITE CONSTRUCTION ACTIVITIES INVOLVING CONCRETE.
9. MORTAR WASHOUT FACILITIES SHALL BE CONSTRUCTED IN ADDITION TO CONCRETE WASHOUT FACILITIES FOR ANY BRICK AND MORTAR BUILDING ENVELOPE CONSTRUCTION ACTIVITIES.
10. TEMPORARY DIVERSIONS SHALL BE CONSTRUCTED AS NECESSARY TO DIRECT ALL RUNOFF FROM HYDROLOGICALLY DISTURBED AREAS TO AN APPROPRIATE SEDIMENT TRAP OR BASIN. VOLUME CONTROL FACILITIES SHALL NOT BE USED AS TEMPORARY SEDIMENT BASINS.
11. DISTURBED AREAS OF THE SITE WHERE CONSTRUCTION ACTIVITIES HAVE TEMPORARILY OR PERMANENTLY CEASED SHALL BE STABILIZED WITH TEMPORARY OR PERMANENT MEASURES WITHIN SEVEN (7) DAYS.
12. ALL FLOOD PROTECTION AREAS AND VOLUME CONTROL FACILITIES SHALL, AT A MINIMUM, BE PROTECTED WITH A DOUBLE-ROW OF SILT FENCE (OR EQUIVALENT).
13. VOLUME CONTROL FACILITIES SHALL NOT BE CONSTRUCTED UNTIL ALL OF THE CONTRIBUTING DRAINAGE AREA HAS BEEN STABILIZED.
14. SOIL STOCKPILES SHALL, AT A MINIMUM, BE PROTECTED WITH PERIMETER SEDIMENT CONTROLS. SOIL STOCKPILES SHALL NOT BE PLACED IN FLOOD PROTECTION AREAS OR THEIR BUFFERS.
15. EARTHEN EMBANKMENT SIDE SLOPES SHALL BE STABILIZED WITH APPROPRIATE EROSION CONTROL BLANKET.
16. STORM SEWERS THAT ARE OR WILL BE FUNCTIONING DURING CONSTRUCTION SHALL BE PROTECTED BY APPROPRIATE SEDIMENT CONTROL MEASURES.
17. THE CONTRACTOR SHALL EITHER REMOVE OR REPLACE ANY EXISTING DRAIN TILES AND INCORPORATE THEM INTO THE DRAINAGE PLAN FOR THE DEVELOPMENT. DRAIN TILES CANNOT BE TRIBUTARY TO A SANITARY OR COMBINED SEWER. DRAIN TILES ALLOWED IN COMBINED SEWER AREA FOR GREEN INFRASTRUCTURE PRACTICES.
18. IF DEWATERING SERVICES ARE USED, ADJOINING PROPERTIES AND DISCHARGE LOCATIONS SHALL BE PROTECTED FROM EROSION AND SEDIMENTATION. DEWATERING SYSTEMS SHOULD BE INSPECTED DAILY DURING OPERATIONAL PERIODS. THE SITE INSPECTOR MUST BE PRESENT AT THE COMMENCEMENT OF DEWATERING ACTIVITIES.
19. THE CONTRACTOR SHALL BE RESPONSIBLE FOR TRENCH DEWATERING AND EXCAVATION FOR THE INSTALLATION OF SANITARY SEWERS, STORM SEWERS, WATERMAINS AS WELL AS THEIR SERVICES AND OTHER APPURTENANCES. ANY TRENCH DEWATERING, WHICH CONTAINS SEDIMENT SHALL PASS THROUGH A SEDIMENT SETTLING POND OR EQUALLY EFFECTIVE SEDIMENT CONTROL DEVICE. ALTERNATIVES MAY INCLUDE DEWATERING INTO A SLUMP PIT, FILTER BAG OR EXISTING VEGETATED UPSLOPE AREA. SEDIMENT LADEN WATERS SHALL NOT BE DISCHARGE TO WATERWAYS, FLOOD PROTECTION AREAS OR THE COMBINED SEWER SYSTEM.
20. ALL PERMANENT EROSION CONTROL PRACTICES SHALL BE INITIATED WITHIN SEVEN (7) DAYS FOLLOWING THE COMPLETION OF SOIL DISTURBING ACTIVITIES.
21. ALL EROSION AND SEDIMENT CONTROL MEASURES SHALL BE MAINTAINED AND REPAIRED AS NEEDED ON A YEAR-ROUND BASIS DURING CONSTRUCTION AND ANY PERIODS OF CONSTRUCTION SHUTDOWN UNTIL PERMANENT STABILIZATION IS ACHIEVED.
22. ALL TEMPORARY EROSION AND SEDIMENT CONTROL MEASURES SHALL BE REMOVED WITHIN THIRTY (30) DAYS AFTER PERMANENT SITE STABILIZATION.
23. THE EROSION AND SEDIMENT CONTROL MEASURES SHOWN ON THE PLANS ARE THE MINIMUM REQUIREMENTS. ADDITIONAL MEASURES MAY BE REQUIRED, AS DIRECTED BY THE ENGINEER, SITE INSPECTOR, OR MWRD.

TECHNICAL GUIDANCE MANUAL

MWRD GENERAL NOTES

10/13/2022

STD. DWG. NO.18

PAGE NO. 19



145 COMMERCE DRIVE, SUITE A
GRAYSLAKE, ILLINOIS 60030
PHONE: (847) 223-4804
FAX: (847) 223-4864
EMAIL: INFO@EEA-LTD.COM
PROFESSIONAL DESIGN FIRM
LICENSE NO. 184-003220
EXPIRES: 04/30/2023

DRYDEN ELEMENTARY SCHOOL
BUILDING ADDITION AND RENOVATIONS
722 S. DRYDEN PLACE
ARLINGTON HEIGHTS, ILLINOIS

Reserved for Seal:

No.	Date	Description
	11/17/22	ISSUE FOR PLAN COMMISSION
⚠	01/06/23	REVISED FOR PLAN COMMISSION
⚠	01/18/23	REVISED FOR PLAN COMMISSION

© ERIKSSON ENGINEERING ASSOCIATES, LTD. 2022 NO PART OF THIS DOCUMENT MAY BE REPRODUCED OR TRANSMITTED IN ANY FORM OR BY ANY MEANS, ELECTRONIC OR MECHANICAL, INCLUDING PHOTOCOPYING, RECORDING, OR BY ANY INFORMATION STORAGE AND RETRIEVAL SYSTEM.		
Design By: RMS	Approved By: TLH	Date: 11/17/22

Sheet Title:

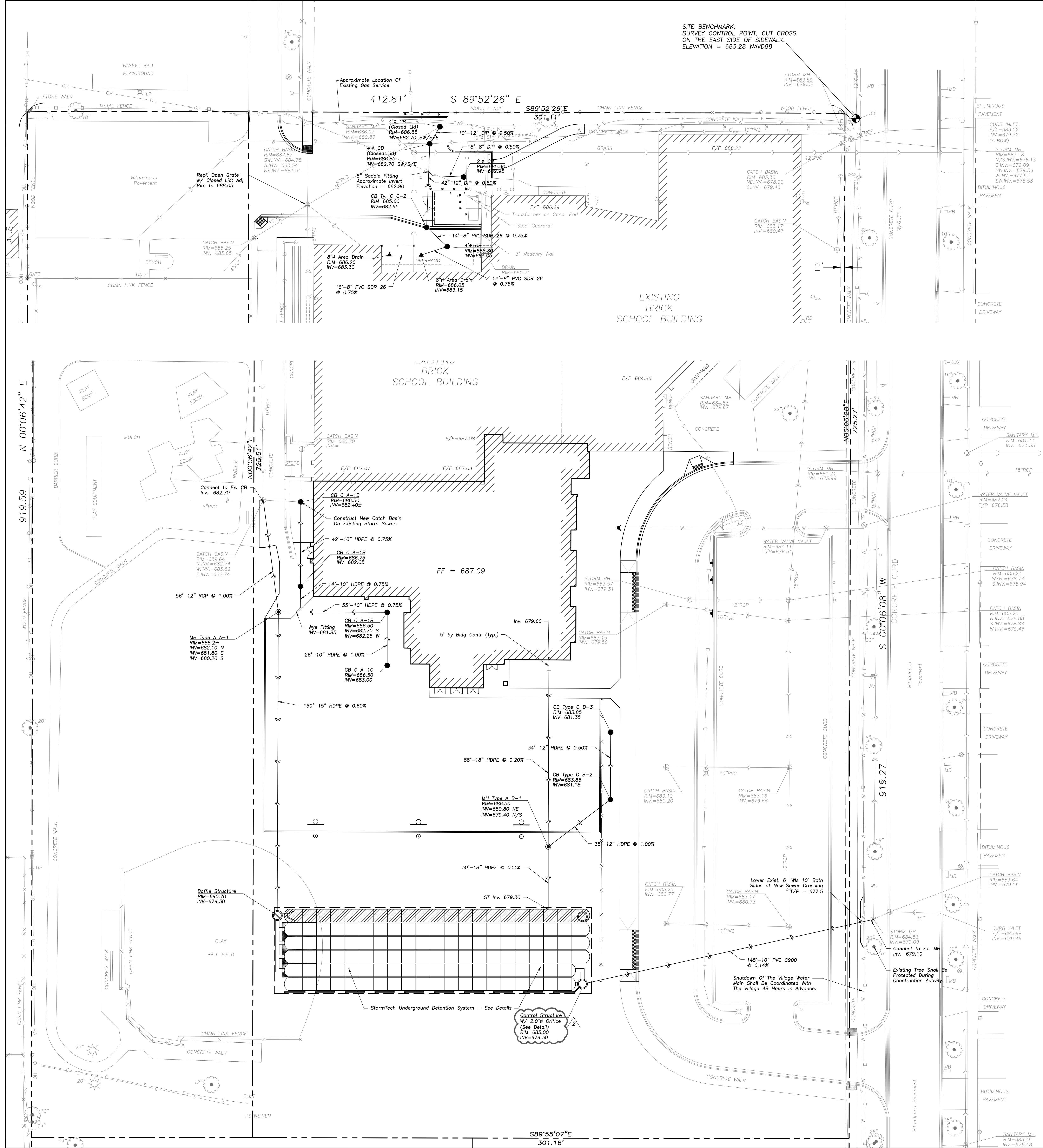
MWRD GENERAL
NOTES

Sheet No:

C002

NOT FOR CONSTRUCTION

NOT FOR CONSTRUCTION



UTILITY NOTES

- Utility Service Lines as Shown Hereon are Approximate. Coordinate The Exact Locations With The Plumbing Drawings. Coordinate The Locations With The Plumbing Contractor and/or the Owner's Construction Representative Prior to Installation of Any New Utilities.
- Refer to Plumbing Drawings for Continuation of All Utilities Within 5 Feet of Building Face.
- Field Verify Invert & Locations of Existing Utility Mains Prior to Installing Any On-Site Utilities or Structures. All Elevations and Inverts Referencing Solid Utility Shall Be Field Verified Prior to Installation Of Any New Structures Or Utilities, and Adjustments Shall Be Made as Necessary. Contact Engineer Prior to Installation If Discrepancy Exists With These Drawings.
- Coordinate the Relocation Of Any Utilities Encountered And Replacement Of Any Utilities Damaged Within Influence Zone Of New Construction. Contact Engineer If The Existing Utilities Vary Appreciably From The Plans.
- All Water Main and Services Shall Be Installed at a Minimum Depth of 5.5' From Top of Finished Ground Elevation to Top of Main.
- Protection of water supplies shall be as described in Section 370.350 of the Illinois Recommended Standards for Sewage Works or Section 41-2.01 of the Standard Specifications for Water and Sewer Main Construction in Illinois, latest edition.
- Clean Out All Existing and Proposed Storm Inlets and Catch Basins at the Completion of Construction.
- Provide Adequate Coupling Device and/or Oversized Concrete Flared-End Section to Accommodate HDPE Storm Sewer.
- The "Standard Specifications for Water and Sewer Main Construction in Illinois", Current Edition Shall Govern Work Where Applicable.
- Rebuild Existing Structures and Adjust Rim Elevations to Match Proposed Ground Elevations.

STRUCTURE NOTES

- All Catch Basins to Be Installed in Paved Areas Shall Have Neenah R2504-D Frame & Grate or Approved Equal.
- All Catch Basins to Be Installed in Landscaped Areas Shall Have Neenah R4340-B Frame & Grate or Approved Equal. For Cone Sections Install a Minimum of 4" Grade Rings For Topsoil Retention. For Flat Slab Tops Install the Following Minimum Height of Grade Rings:
4" Diameter Structure- 4"
5" Diameter Structure- 6"
6" Diameter Structure- 8"
- All Catch Basins to Be Installed Along Curb and Gutter (B-6-12) Shall Have Neenah R3281-A Frame & Grate or Approved Equal.
- All Catch Basins to Be Installed Along Depressed Curb and Gutter (Dep B-6-12) Shall Have East Jordan Iron Works 9120 Catch Basin Inlet Frame and Grate, or Approved Equal.
- Where Structures are Shown Along the Curbside, Unless Specifically Stated Otherwise, It Is Intended That the Frame of the Structure Is to Fall Within the Flowline of the Gutter or at the Pavement Edge Where No Gutter Exists.
- All Manholes Shall Have Neenah R1713-B Frame & Closed Lid or Approved Equal, with "Storm" or "Sanitary" Imprinted as Appropriate.
- For All Structures Indicated to be Adjusted, Remove and Install Adjusting Rings, Cone Section, Barrel Sections, or Flat Slab Top as Necessary.
- All Flared End Sections 12" and Larger Shall Include an IDOT Standard Grate.
- All Flared End Sections Shall Be Concrete.
- All Sanitary Manholes Shall Include a Chimney Seal.

LEGEND

EXISTING	PROPOSED
Manhole	Manhole
Catch Basin	Catch Basin
Net	Net
Area Drain	Area Drain
Clean Out	Clean Out
Flared End Section	Flared End Section
Storm Sewer	Storm Sewer
Sanitary Sewer	Sanitary Sewer
Combined Sewer	Combined Sewer
Water Main	Water Main
Gas Line	Gas Line
Overhead Wires	Overhead Wires
Electrical Cable (Buried)	Electrical Cable (Buried)
Telephone Line	Telephone Line
Fire Hydrant	Fire Hydrant
Valve Vault	Valve Vault
Buffalo Box	Buffalo Box
Downspout	Downspout
Bollard	Bollard
Gas Valve	Gas Valve
Gas Meter	Gas Meter
Electric Meter	Electric Meter
ComEd Manhole	ComEd Manhole
Hand Hole	Hand Hole
Light Pole	Light Pole
Light Pole w/ Mast Arm	Light Pole w/ Mast Arm
Utility Pole	Utility Pole
Telephone Pedestal	Telephone Pedestal
Telephone Manhole	Telephone Manhole
Sign	Sign
Fence	Fence
Accessible Parking Stall	Accessible Parking Stall
Curb & Gutter	Curb & Gutter
Depressed Curb	Depressed Curb
Curb Elevation	Curb Elevation
Gutter Elevation	Gutter Elevation
Pavement Elevation	Pavement Elevation
SideWalk Elevation	SideWalk Elevation
Ground Elevation	Ground Elevation
Top of Retaining Wall Elevation	Top of Retaining Wall Elevation
Swale	Swale
Contour Line	Contour Line
Deciduous Tree	Deciduous Tree
Coniferous Tree	Coniferous Tree
Brushline	Brushline
Tree Protection Fencing at Drip Line	Tree Protection Fencing at Drip Line

GENERAL NOTES

- The Location of Existing Underground Utilities, Such as Watermains, Sewers, Gas Lines, Etc., As Shown On The Plans, Has Been Determined From The Best Available Information and is Given For The Convenience of The Contractor. However, The Owner and The Engineer Do Not Assume Responsibility in the Event That During Construction, Utilities Other Than Those Shown May Be Encountered, and That The Actual Location of Those Utilities Are Shown May Be Different From The Location As Shown On The Drawings. Contact Engineer Immediately If Surface and/or Subsurface Features Are Different Than Shown On The Drawings.
- Notify The Engineer Without Delay of Any Discrepancies Between the Drawings and Existing Field Conditions.
- Contractor Shall Provide Private Utility Locating Services for the Project Area.
- Notify The Owner, Engineer and The Village of Arlington Heights A Minimum of 48 Hours in Advance of Performing Any Work.
- All Areas, On or Off Site, Disturbed During Construction Operations and Not Part of the Work As Shown Hereon Shall Be Restored To Original Condition to the Satisfaction of the Owner at No Additional Cost to the Owner. It is Incumbent Upon Contractor to Show That Damaged Areas Were Not Disturbed By Construction Operations.
- These Drawings Assume That The Contractor Will Utilize An Electronic Drawing File (DWG) to Stake All Site Improvements Accordingly. Contractor Shall Re-Establish Horizontal Control. Horizontal Control Points Not Provided.
- No Person May Utilize The Information Contained Within These Drawings Without Written Approval From Eriksson Engineering Associates, Ltd.
- The Engineer is Furnishing These Drawings For Construction Purposes As A Convenience To The Owner, Architect, Surveyor, or Contractor. Prior To The Use Of These Drawings For Construction Purposes, The User Of This Media Shall Verify All Dimensions And Locations Of Buildings With The Foundation Drawings And Architectural Site Plan, and Coordinate All Dimensions and Locations of All Site Items. If Conflicts Exist The User Of This Information Shall Contact The Engineer Immediately.
- Provide An As-built Survey Prepared By A Licensed Professional Land Surveyor In Accordance With The Authorities Having Jurisdiction Which Shall Include As A Minimum All Detention Basins and Best Management Practices, Include All Storm and Sanitary Sewers, Structure Locations, Sizes, Rim and Invert Elevations, Final Detention Volume Calculations For The Basin(s), Watermain and Valve and Appurtenance Locations.
- The Illinois Department Of Transportation Standard Specifications For Road And Bridge Construction Latest Edition, And All Addenda Thereinto, Shall Govern The Earthwork And Paving Work Under This Contract Unless Noted Otherwise.

NOT FOR CONSTRUCTION

**ERIKSSON
ENGINEERING
ASSOCIATES, LTD.**

145 COMMERCE DRIVE, SUITE A
GRAYSLAKE, ILLINOIS 60030
PHONE: (847) 223-4804
FAX: (847) 223-4864
EMAIL: INFO@EEA-LTD.COM

PROFESSIONAL DESIGN FIRM
LICENSE NO. 184-003250
EXPIRES: 04/30/2023

DRYDEN ELEMENTARY SCHOOL
BUILDING ADDITION AND RENOVATIONS
722 S. DRYDEN PLACE
ARLINGTON HEIGHTS, ILLINOIS

Reserved for Seal:

No.	Date	Description
	11/17/22	ISSUE FOR PLAN COMMISSION
	01/06/23	REVISED FOR PLAN COMMISSION
	01/18/23	REVISED FOR PLAN COMMISSION

© ERIKSSON ENGINEERING ASSOCIATES, LTD. 2022
All Rights Reserved. No part of this publication may be reproduced, stored in a retrieval system, or transmitted, in any form or by any means, electronic, mechanical, photocopying, recording, or by any information storage and retrieval system, without prior written permission from Eriksson Engineering Associates, Ltd.

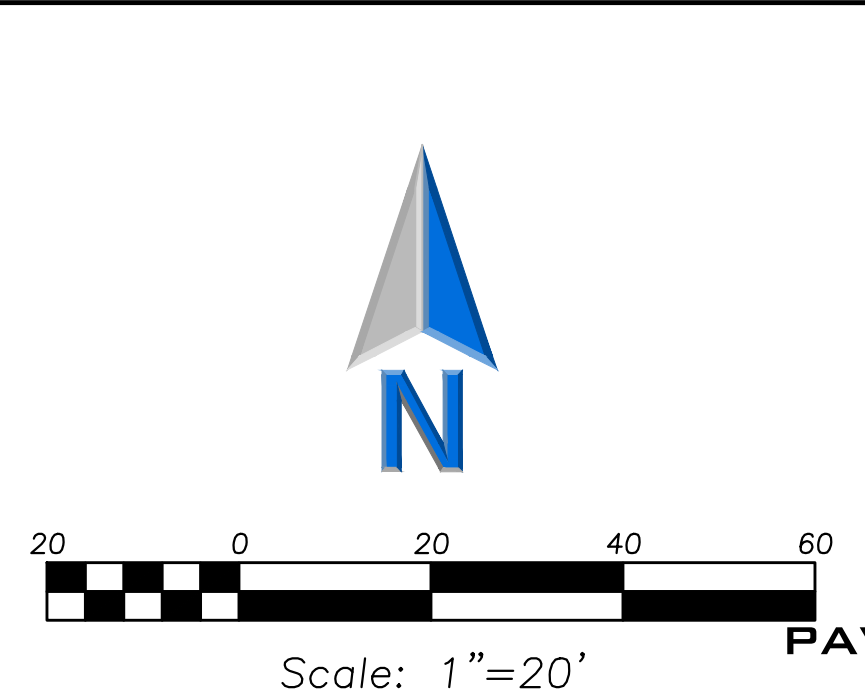
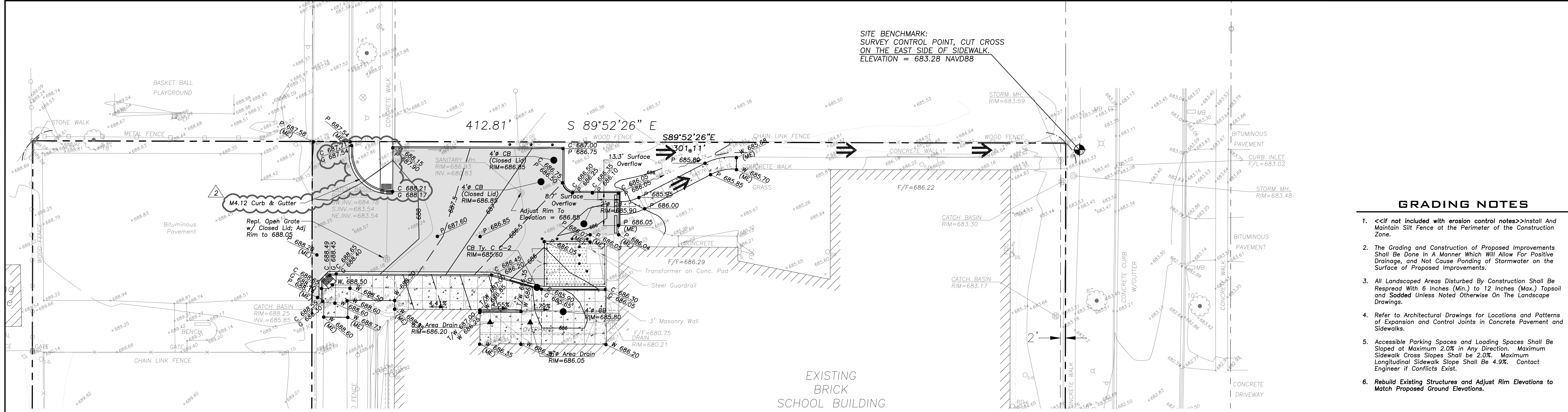
Design By:	Approved By:	Date:
RMS	TLH	11/17/22

Sheet Title:

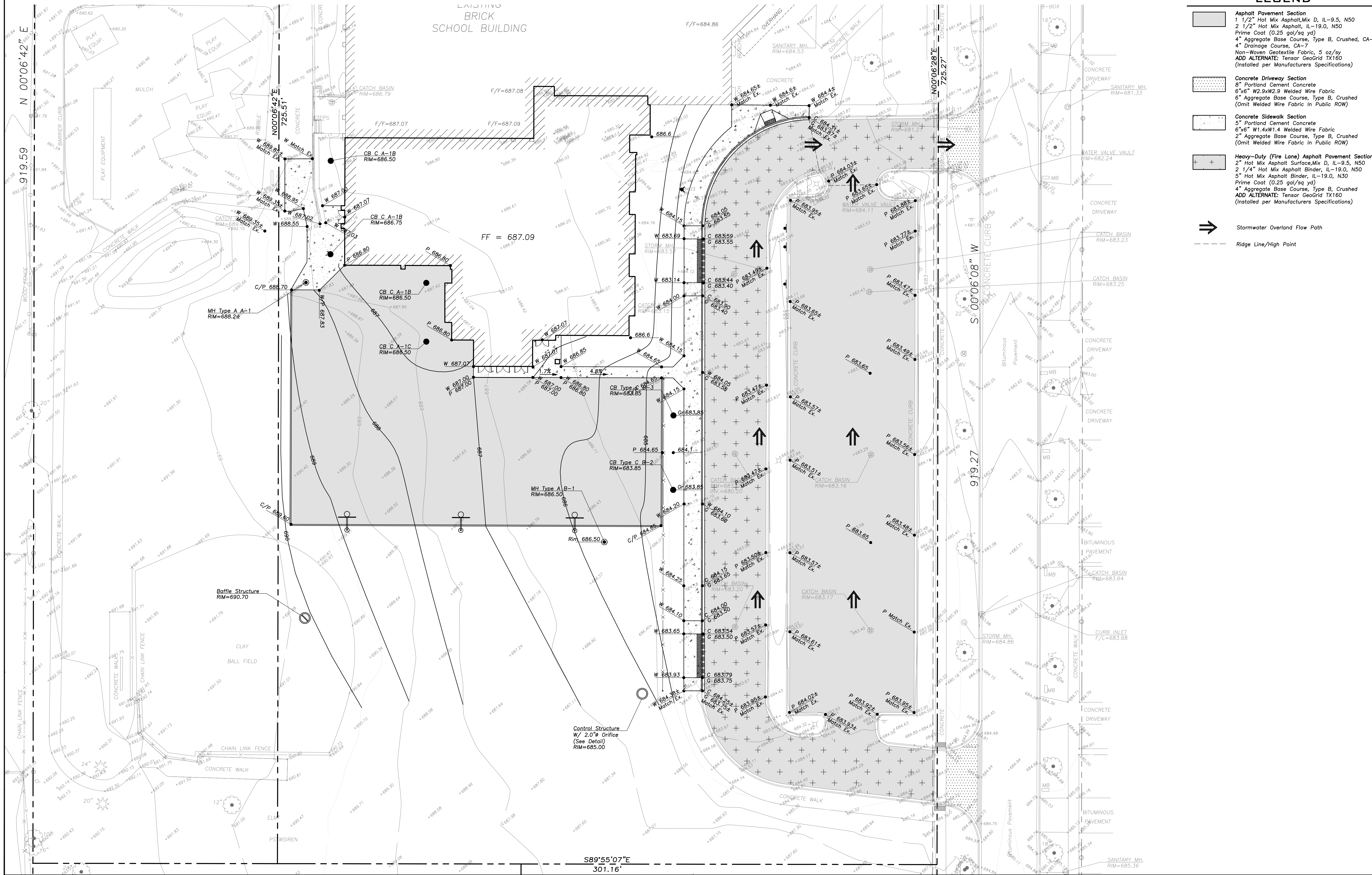
SITE UTILITY PLAN

Sheet No:

C301



**DRYDEN ELEMENTARY SCHOOL
BUILDING ADDITION AND RENOVATIONS**
722 S. DRYDEN PLACE
ARLINGTON HEIGHTS, ILLINOIS



GENERAL NOTES

1. The Location of Existing Underground Utilities, Such As Watermain, Sewers, Gas Lines, Etc., As Shown On The Plans, Has Been Determined From The Best Available Information and Is Given For The Convenience of The Contractor. However, The Owner and The Engineer Do Not Assume Responsibility in the Event That During Construction, Utilities Other Than Those Shown May Be Encountered, and That The Actual Location of Those Which Are Shown May Be Different From The Location As Shown On The Drawings. Contact Engineer Immediately If Surface and/or Subsurface Features Are Different Than Shown On The Drawings.
2. Notify The Engineer Without Delay of Any Discrepancies Between the Drawings and Existing Field Conditions.
3. Contractor Shall Provide Private Utility Locating Services for the Project Area.
4. Notify The Owner, Engineer and The Village of Arlington Heights A Minimum of 48 Hours in Advance of Performing Any Work.
5. All Areas, On or Off Site, Disturbed During Construction Operations and Not Part of the Work As Shown Hereon Shall Be Restored To Original Condition to the Satisfaction of the Owner at No Additional Cost to the Owner. It is Incumbent Upon Contractor to Show That Damaged Areas Were Not Disturbed By Construction Operations.
6. These Drawings Assume That The Contractor Will Utilize An Electronic Drawing File (DWG) to Stake All Site Improvements Accordingly. Contractor Shall Re-Establish Horizontal Control. Horizontal Control Points Not Provided.
7. No Person May Utilize The Information Contained Within These Drawings Without Written Approval From Eriksson Engineering Associates, Ltd.
8. The Engineer Is Furnishing These Drawings For Construction Purposes As A Convenience To The Owner, Architect, Surveyor, or Contractor. Prior To The Use Of These Drawings For Construction Purposes, The User Of This Media Shall Verify All Dimensions And Locations Of Buildings With The Foundation Drawings And Architectural Site Plan, and Coordinate All Dimensions and Locations of All Site Items. If Conflicts Exist The User Of This Information Shall Contact The Engineer Immediately.
9. Provide An As-built Survey Prepared By A Licensed Professional Land Surveyor In Accordance With The Authorities Having Jurisdiction Which Shall Include As A Minimum All Detention Basins and Best Management Practices, Include All Storm and Sanitary Sewers, Structure Locations, Sizes, Rim and Invert Elevations, Final Detention Volume Calculations For The Basin(s), Watermain and Valve and Appurtenance Locations.
10. The Illinois Department Of Transportation Standard Specifications For Road And Bridge Construction Latest Edition, And All Addenda Thereto, Shall Govern The Earthwork And Paving Work Under This Contract Unless Noted Otherwise.

Reserved for Seal:

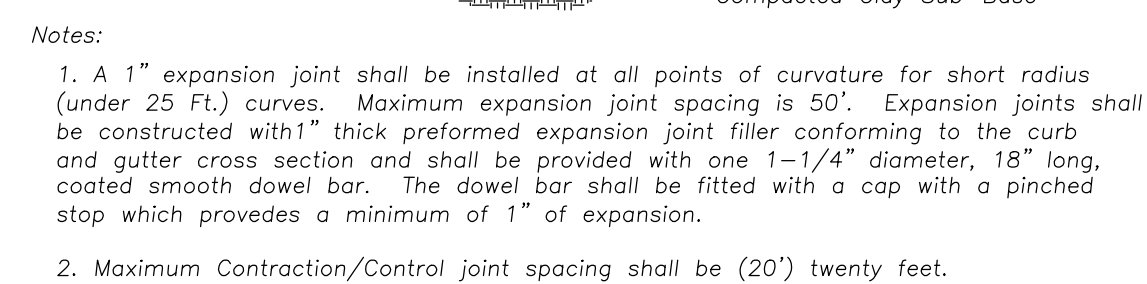
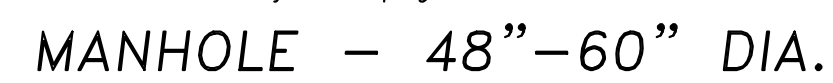
No.	Date	Description
11/17/22	11/17/22	ISSUE FOR PLAN COMMISSION
01/06/23	01/06/23	REVISED FOR PLAN COMMISSION
01/18/23	01/18/23	REVISED FOR PLAN COMMISSION

Design By: RMS	Approved By: TLH	Date: 11/17/22
-------------------	---------------------	-------------------

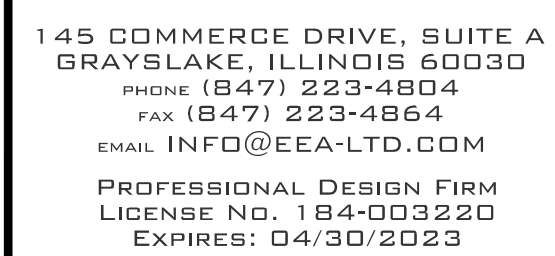
**GRADING AND
PAVING PLAN**

Sheet No:
C401

NOT FOR CONSTRUCTION



TYPE B CURB



DRYDEN ELEMENTARY SCHOOL
BUILDING ADDITION AND RENOVATIONS
722 S. DRYDEN PLACE
ARLINGTON HEIGHTS, ILLINOIS

Reserved for Seal:

ERIKSSON ENGINEERING ASSOCIATES, LTD., 2022
THIS PLAN & DESIGN ARE THE PROPERTY OF ERIKSSON ENGINEERING ASSOCIATES, LTD.
NO REPRODUCTION OF ANY PART OF THESE PLANS IS PERMITTED WITHOUT THE WRITTEN
CONSENT OF ERIKSSON ENGINEERING ASSOCIATES, LTD.

Design By: RMS	Approved By: TLH	Date: 11/17/22
-------------------	---------------------	-------------------

Sheet Title:

SITE WORK DETAILS


Sheet No:

C601


NOT FOR CONSTRUCTION

PROJECT INFORMATION

ENGINEERED PRODUCT
MANAGER
ADS SALES REP
PROJECT NO.



Advanced Drainage Systems, Inc.



SiteAssist
FOR STORMTECH
INSTALLATION INSTRUCTIONS
VISIT OUR APP

AHSD25 - DRYDEN SCHOOL

ARLINGTON HEIGHTS, IL

SC-740 STORMTECH CHAMBER SPECIFICATIONS

1. CHAMBERS SHALL BE STORMTECH SC-740.

2. CHAMBERS SHALL BE ARCH-SHAPED AND SHALL BE MANUFACTURED FROM VIRGIN, IMPACT-MODIFIED POLYPROPYLENE COPOLYMERS.

3. CHAMBERS SHALL MEET THE REQUIREMENTS OF ASTM F2418, "STANDARD SPECIFICATION FOR POLYPROPYLENE (PP) CORRUGATED WALL STORMWATER COLLECTION CHAMBERS".

4. CHAMBER ROWS SHALL PROVIDE CONTINUOUS, UNOBSTRUCTED INTERNAL SPACE WITH NO INTERNAL SUPPORTS THAT WOULD IMPIDE FLOW OR LIMIT ACCESS FOR INSPECTION.

5. THE STRUCTURAL DESIGN OF THE CHAMBERS, THE STRUCTURAL BACKFILL, AND THE INSTALLATION REQUIREMENTS SHALL ENSURE THAT THE LOAD FACTORS SPECIFIED IN THE AASHTO LEVY BRIDGE DESIGN SPECIFICATIONS, SECTION 12.12, ARE MET FOR: 1) LONG-DURATION (240 LONG) AND 2) SHORT-DURATION LIVE LOADS, BASED ON THE AASHTO DESIGN TRUCK WITH CONSIDERATION FOR IMPACT AND MULTIPLE VEHICLE PRESENCES.

6. CHAMBERS SHALL BE DESIGNED, TESTED AND ALLOWED (1) LOAD CONFIGURATIONS DETERMINED IN ACCORDANCE WITH ASTM F2771 "STANDARD PRACTICE FOR STRUCTURAL DESIGN OF THERMOPLASTIC CORRUGATED WALL STORMWATER COLLECTION CHAMBERS" LOAD CONFIGURATIONS SHALL INCLUDE: 1) INSTANTANEOUS (1 MIN) AASHTO DESIGN TRUCK LIVE LOAD ON MINIMUM COVER (2) MAXIMUM PERMANENT (75-YR) COVER LOAD AND 3) ALLOWABLE COVER WITH PARKED (1-WEEK) AASHTO DESIGN TRUCK.

7. REQUIREMENTS FOR HANDLING AND INSTALLATION:

- TO MAINTAIN THE WIDTH OF CHAMBERS DURING SHIPPING AND HANDLING, CHAMBERS SHALL HAVE INTEGRAL, INTERLOCKING STACKING LOGS.
- TO ENSURE A SECURE JOINT DURING INSTALLATION AND BACKFILL, THE HEIGHT OF THE CHAMBER JOINT SHALL NOT BE LESS THAN 2".
- TO ENSURE THE INTEGRITY OF THE ARCH SHAPE DURING INSTALLATION, THE ARCH STIFFNESS CONSTANT SHALL BE GREATER THAN 1.56 LB/FT². THE ARCH IS DEFINED IN SECTION 6.2 OF ASTM F2418 AND (1) TO RESIST CHAMBER DEFORMATION DURING INSTALLATION AT ELEVATED TEMPERATURES (ABOVE 77 °F / 23 °C), CHAMBERS SHALL BE PRODUCED FROM REFLECTIVE GOLD OR YELLOW COLORS.

8. ONLY CHAMBERS THAT ARE APPROVED BY THE SITE DESIGN ENGINEER WILL BE ALLOWED. UPON REQUEST BY THE SITE DESIGN ENGINEER OR OWNER, THE CHAMBER MANUFACTURER SHALL SUBMIT A STRUCTURAL EVALUATION FOR APPROVAL BEFORE DELIVERING CHAMBERS TO THE PROJECT SITE AS FOLLOWS:

- THE STRUCTURAL EVALUATION SHALL BE SIGNED BY A REGISTERED PROFESSIONAL ENGINEER.
- THE STRUCTURAL EVALUATION SHALL DEMONSTRATE THAT THE SAFETY FACTORS ARE GREATER THAN OR EQUAL TO 1.95 FOR DEAD LOAD AND 1.75 FOR LIVE LOAD, THE MINIMUM REQUIRED BY ASTM F2771 AND BY SECTIONS 3 AND 12.12 OF THE AASHTO LEVY BRIDGE DESIGN SPECIFICATIONS FOR THERMOPLASTIC CORRUGATED WALL STORMWATER COLLECTION CHAMBERS.
- THE TEST UNDERSTANDING REQUIRED FOR THE TEST SHALL BE USED FOR PERMANENT DEAD LOAD DESIGN EXCEPT THAT IT SHALL BE THE 15-YEAR MODULUS USED FOR DESIGN.

9. CHAMBERS AND END CAPS SHALL BE PRODUCED AT AN ISO 9001 CERTIFIED MANUFACTURING FACILITY.

IMPORTANT - NOTES FOR THE BIDDING AND INSTALLATION OF THE SC-740 SYSTEM

1. STORMTECH SC-740 CHAMBERS SHALL NOT BE INSTALLED UNTIL THE MANUFACTURER'S REPRESENTATIVE HAS COMPLETED A PRE-CONSTRUCTION MEETING WITH THE INSTALLER.

2. STORMTECH SC-740 CHAMBERS SHALL BE INSTALLED IN ACCORDANCE WITH THE "STORMTECH SC-310SC-740DC-780 CONSTRUCTION GUIDE".

3. CHAMBERS ARE NOT TO BE BACKFILLED WITH A DOZER OR AN EXCAVATOR SITUATED OVER THE CHAMBERS.

- STORMTECH RECOMMENDS 3 BACKFILL METHODS:
 - STORMTECH LOCATED OFF THE CHAMBER BED.
 - BACKFILL AS ROWS ARE BUILT USING AN EXCAVATOR ON THE FOUNDATION STONE OR SUBGRADE.
 - BACKFILL FROM OUTSIDE THE EXCAVATION USING A LONG-BOOM HOSE OR EXCAVATOR.

4. THE FOUNDATION STONE SHALL BE LEVELED AND COMPACTED PRIOR TO PLACING CHAMBERS.

5. JOINTS BETWEEN CHAMBERS SHALL BE PROPERLY SEATED PRIOR TO PLACING STONE.

6. MAINTAIN MINIMUM 6" (150 mm) SPACING BETWEEN THE CHAMBER ROWS.

7. EMBEDMENT STONE SURROUNDING CHAMBERS MUST BE A CLEAN, CRUSHED, ANGULAR STONE 3/4" (20.0 mm).

8. THE CONTRACTOR MUST REPORT ANY DISCREPANCIES WITH CHAMBER FOUNDATION MATERIALS BEARING CAPACITIES TO THE SITE DESIGN ENGINEER.

9. ADS RECOMMENDS THE USE OF "FLEXSTORM CATCH IT" INSERTS DURING CONSTRUCTION FOR ALL INLETS TO PROTECT THE SUBSURFACE STORMWATER MANAGEMENT SYSTEM FROM CONSTRUCTION SITE RUNOFF.

NOTES FOR CONSTRUCTION EQUIPMENT

1. STORMTECH SC-740 CHAMBERS SHALL BE INSTALLED IN ACCORDANCE WITH THE "STORMTECH SC-310SC-740DC-780 CONSTRUCTION GUIDE".

2. THE USE OF CONSTRUCTION EQUIPMENT OVER SC-740 CHAMBERS IS LIMITED:

- NO EQUIPMENT IS ALLOWED ON BARE CHAMBERS.
- NO RUBBER TIRE LOADERS, CLAMP TRUCKS, OR EXCAVATORS ARE ALLOWED UNTIL PROPER FILL DEPTHS ARE REACHED IN ACCORDANCE WITH THE "STORMTECH SC-310SC-740DC-780 CONSTRUCTION GUIDE".
- WEIGHT LIMITS FOR CONSTRUCTION EQUIPMENT CAN BE FOUND IN THE "STORMTECH SC-310SC-740DC-780 CONSTRUCTION GUIDE".

3. FILL OF 24" (600 mm) OF STABILIZED COVER MATERIALS OVER THE CHAMBERS IS REQUIRED FOR CLAMP TRUCK TRAVEL OR DUMPING.

4. THE USE OF A DOZER TO PUSH EMBEDMENT STONE BETWEEN THE ROWS OF CHAMBERS MAY CAUSE DAMAGE TO THE CHAMBERS AND IS NOT AN ACCEPTABLE BACKFILL METHOD. ANY CHAMBERS DAMAGED BY THE "DUMP AND PUSH" METHOD ARE NOT COVERED UNDER THE STORMTECH STANDARD WARRANTY.

CONTACT STORMTECH AT 1-888-882-2684 WITH ANY QUESTIONS ON INSTALLATION REQUIREMENTS OR WEIGHT LIMITS FOR CONSTRUCTION EQUIPMENT.

4860 TREILMAN BLVD
VALLEJO, CA 94592
800-882-2684
WWW.STORMTECH.COM
800-882-2684
WWW.STORMTECH.COM
800-882-2684
WWW.STORMTECH.COM

4860 TREILMAN BLVD
VALLEJO, CA 94592
800-882-2684
WWW.STORMTECH.COM
800-882-2684
WWW.STORMTECH.COM
800-882-2684
WWW.STORMTECH.COM

4860 TREILMAN BLVD
VALLEJO, CA 94592
800-882-2684
WWW.STORMTECH.COM
800-882-2684
WWW.STORMTECH.COM
800-882-2684
WWW.STORMTECH.COM

4860 TREILMAN BLVD
VALLEJO, CA 94592
800-882-2684
WWW.STORMTECH.COM
800-882-2684
WWW.STORMTECH.COM
800-882-2684
WWW.STORMTECH.COM

4860 TREILMAN BLVD
VALLEJO, CA 94592
800-882-2684
WWW.STORMTECH.COM
800-882-2684
WWW.STORMTECH.COM
800-882-2684
WWW.STORMTECH.COM

4860 TREILMAN BLVD
VALLEJO, CA 94592
800-882-2684
WWW.STORMTECH.COM
800-882-2684
WWW.STORMTECH.COM
800-882-2684
WWW.STORMTECH.COM

4860 TREILMAN BLVD
VALLEJO, CA 94592
800-882-2684
WWW.STORMTECH.COM
800-882-2684
WWW.STORMTECH.COM
800-882-2684
WWW.STORMTECH.COM

4860 TREILMAN BLVD
VALLEJO, CA 94592
800-882-2684
WWW.STORMTECH.COM
800-882-2684
WWW.STORMTECH.COM
800-882-2684
WWW.STORMTECH.COM

4860 TREILMAN BLVD
VALLEJO, CA 94592
800-882-2684
WWW.STORMTECH.COM
800-882-2684
WWW.STORMTECH.COM
800-882-2684
WWW.STORMTECH.COM

4860 TREILMAN BLVD
VALLEJO, CA 94592
800-882-2684
WWW.STORMTECH.COM
800-882-2684
WWW.STORMTECH.COM
800-882-2684
WWW.STORMTECH.COM

4860 TREILMAN BLVD
VALLEJO, CA 94592
800-882-2684
WWW.STORMTECH.COM
800-882-2684
WWW.STORMTECH.COM
800-882-2684
WWW.STORMTECH.COM

4860 TREILMAN BLVD
VALLEJO, CA 94592
800-882-2684
WWW.STORMTECH.COM
800-882-2684
WWW.STORMTECH.COM
800-882-2684
WWW.STORMTECH.COM

4860 TREILMAN BLVD
VALLEJO, CA 94592
800-882-2684
WWW.STORMTECH.COM
800-882-2684
WWW.STORMTECH.COM
800-882-2684
WWW.STORMTECH.COM

4860 TREILMAN BLVD
VALLEJO, CA 94592
800-882-2684
WWW.STORMTECH.COM
800-882-2684
WWW.STORMTECH.COM
800-882-2684
WWW.STORMTECH.COM

4860 TREILMAN BLVD
VALLEJO, CA 94592
800-882-2684
WWW.STORMTECH.COM
800-882-2684
WWW.STORMTECH.COM
800-882-2684
WWW.STORMTECH.COM

4860 TREILMAN BLVD
VALLEJO, CA 94592
800-882-2684
WWW.STORMTECH.COM
800-882-2684
WWW.STORMTECH.COM
800-882-2684
WWW.STORMTECH.COM

4860 TREILMAN BLVD
VALLEJO, CA 94592
800-882-2684
WWW.STORMTECH.COM
800-882-2684
WWW.STORMTECH.COM
800-882-2684
WWW.STORMTECH.COM

4860 TREILMAN BLVD
VALLEJO, CA 94592
800-882-2684
WWW.STORMTECH.COM
800-882-2684
WWW.STORMTECH.COM
800-882-2684
WWW.STORMTECH.COM

4860 TREILMAN BLVD
VALLEJO, CA 94592
800-882-2684
WWW.STORMTECH.COM
800-882-2684
WWW.STORMTECH.COM
800-882-2684
WWW.STORMTECH.COM

4860 TREILMAN BLVD
VALLEJO, CA 94592
800-882-2684
WWW.STORMTECH.COM
800-882-2684
WWW.STORMTECH.COM
800-882-2684
WWW.STORMTECH.COM

4860 TREILMAN BLVD
VALLEJO, CA 94592
800-882-2684
WWW.STORMTECH.COM
800-882-2684
WWW.STORMTECH.COM
800-882-2684
WWW.STORMTECH.COM

4860 TREILMAN BLVD
VALLEJO, CA 94592
800-882-2684
WWW.STORMTECH.COM
800-882-2684
WWW.STORMTECH.COM
800-882-2684
WWW.STORMTECH.COM

4860 TREILMAN BLVD
VALLEJO, CA 94592
800-882-2684
WWW.STORMTECH.COM
800-882-2684
WWW.STORMTECH.COM
800-882-2684
WWW.STORMTECH.COM

4860 TREILMAN BLVD
VALLEJO, CA 94592
800-882-2684
WWW.STORMTECH.COM
800-882-2684
WWW.STORMTECH.COM
800-882-2684
WWW.STORMTECH.COM

4860 TREILMAN BLVD
VALLEJO, CA 94592
800-882-2684
WWW.STORMTECH.COM
800-882-2684
WWW.STORMTECH.COM
800-882-2684
WWW.STORMTECH.COM

4860 TREILMAN BLVD
VALLEJO, CA 94592
800-882-2684
WWW.STORMTECH.COM
800-882-2684
WWW.STORMTECH.COM
800-882-2684
WWW.STORMTECH.COM

4860 TREILMAN BLVD
VALLEJO, CA 94592
800-882-2684
WWW.STORMTECH.COM
800-882-2684
WWW.STORMTECH.COM
800-882-2684
WWW.STORMTECH.COM

4860 TREILMAN BLVD
VALLEJO, CA 94592
800-882-2684
WWW.STORMTECH.COM
800-882-2684
WWW.STORMTECH.COM
800-882-2684
WWW.STORMTECH.COM

4860 TREILMAN BLVD
VALLEJO, CA 94592
800-882-2684
WWW.STORMTECH.COM
800-882-2684
WWW.STORMTECH.COM
800-882-2684
WWW.STORMTECH.COM

4860 TREILMAN BLVD
VALLEJO, CA 94592
800-882-2684
WWW.STORMTECH.COM
800-882-2684
WWW.STORMTECH.COM
800-882-2684
WWW.STORMTECH.COM

4860 TREILMAN BLVD
VALLEJO, CA 94592
800-882-2684
WWW.STORMTECH.COM
800-882-2684
WWW.STORMTECH.COM
800-882-2684
WWW.STORMTECH.COM

4860 TREILMAN BLVD
VALLEJO, CA 94592
800-882-2684
WWW.STORMTECH.COM
800-882-2684
WWW.STORMTECH.COM
800-882-2684
WWW.STORMTECH.COM

4860 TREILMAN BLVD
VALLEJO, CA 94592
800-882-2684
WWW.STORMTECH.COM
800-882-2684
WWW.STORMTECH.COM
800-882-2684
WWW.STORMTECH.COM

4860 TREILMAN BLVD
VALLEJO, CA 94592
800-882-2684
WWW.STORMTECH.COM
800-882-2684
WWW.STORMTECH.COM
800-882-2684
WWW.STORMTECH.COM

4860 TREILMAN BLVD
VALLEJO, CA 94592
800-882-2684
WWW.STORMTECH.COM
800-882-2684
WWW.STORMTECH.COM
800-882-2684
WWW.STORMTECH.COM

4860 TREILMAN BLVD
VALLEJO, CA 94592
800-882-2684
WWW.STORMTECH.COM
800-882-2684
WWW.STORMTECH.COM
800-882-2684
WWW.STORMTECH.COM

4860 TREILMAN BLVD
VALLEJO, CA 94592
800-882-2684
WWW.STORMTECH.COM
800-882-2684
WWW.STORMTECH.COM
800-882-2684
WWW.STORMTECH.COM

4860 TREILMAN BLVD
VALLEJO, CA 94592
800-882-2684
WWW.STORMTECH.COM
800-882-2684
WWW.STORMTECH.COM
800-882-2684
WWW.STORMTECH.COM

4860 TREILMAN BLVD
VALLEJO, CA 94592
800-882-2684
WWW.STORMTECH.COM
800-882-2684
WWW.STORMTECH.COM
800-882-2684
WWW.STORMTECH.COM

4860 TREILMAN BLVD
VALLEJO, CA 94592
800-882-2684
WWW.STORMTECH.COM
800-882-2684
WWW.STORMTECH.COM
800-882-2684
WWW.STORMTECH.COM

4860 TREILMAN BLVD
VALLEJO, CA 94592
800-882-2684
WWW.STORMTECH.COM
800-882-2684
WWW.STORMTECH.COM
800-882-2684
WWW.STORMTECH.COM

4860 TREILMAN BLVD
VALLEJO, CA 94592
800-882-2684
WWW.STORMTECH.COM
800-882-2684
WWW.STORMTECH.COM
800-882-2684
WWW.STORMTECH.COM

4860 TREILMAN BLVD
VALLEJO, CA 94592
800-882-2684
WWW.STORMTECH.COM
800-882-2684
WWW.STORMTECH.COM
800-882-2684
WWW.STORMTECH.COM

4860 TREILMAN BLVD
VALLEJO, CA 94592
800-882-2684
WWW.STORMTECH.COM
800-882-2684
WWW.STORMTECH.COM
800-882-2684
WWW.STORMTECH.COM

4860 TREILMAN BLVD
VALLEJO, CA 94592
800-882-2684
WWW.STORMTECH.COM
800-882-2684
WWW.STORMTECH.COM
800-882-2684
WWW.STORMTECH.COM

4860 TREILMAN BLVD
VALLEJO, CA 94592
800-882-2684
WWW.STORMTECH.COM
800-882-2684
WWW.STORMTECH.COM
800-882-2684
WWW.STORMTECH.COM

4860 TREILMAN BLVD
VALLEJO, CA 94592
800-882-2684
WWW.STORMTECH.COM
800-882-2684
WWW.STORMTECH.COM
800-882-2684
WWW.STORMTECH.COM

4860 TREILMAN BLVD
VALLEJO, CA 94592
800-882-2684
WWW.STORMTECH.COM
800-882-2684
WWW.STORMTECH.COM
800-882-2684
WWW.STORMTECH.COM

4860 TREILMAN BLVD
VALLEJO, CA 94592
800-882-2684
WWW.STORMTECH.COM
800-882-2684
WWW.STORMTECH.COM
800-882-2684
WWW.STORMTECH.COM

4860 TREILMAN BLVD
VALLEJO, CA 94592
800-882-2684
WWW.STORMTECH.COM
800-882-2684
WWW.STORMTECH.COM
800-882-2684
WWW.STORMTECH.COM

4860 TREILMAN BLVD
VALLEJO, CA 94592
800-882-2684
WWW.STORMTECH.COM
800-882-2684
WWW.STORMTECH.COM
800-882-2684
WWW.STORMTECH.COM

4860 TREILMAN BLVD
VALLEJO, CA 94592
800-882-2684
WWW.STORMTECH.COM
800-882-2684
WWW.STORMTECH.COM
800-882-2684
WWW.STORMTECH.COM

4860 TREILMAN BLVD
VALLEJO, CA 94592
800-882-2684
WWW.STORMTECH.COM
800-882-2684
WWW.STORMTECH.COM
800-882-2684
WWW.STORMTECH.COM

4860 TREILMAN BLVD
VALLEJO, CA 94592
800-882-2684
WWW.STORMTECH.COM
800-882-2684
WWW.STORMTECH.COM
800-882-2684
WWW.STORMTECH.COM

4860 TREILMAN BLVD
VALLEJO, CA 94592
800-882-2684
WWW.STORMTECH.COM
800-882-2684
WWW.STORMTECH.COM
800-882-2684
WWW.STORMTECH.COM

4860 TREILMAN BLVD
VALLEJO, CA 94592
800-882-2684
WWW.STORMTECH.COM
800-882-2684
WWW.STORMTECH.COM
800-882-2684
WWW.STORMTECH.COM

4860 TREILMAN BLVD
VALLEJO, CA 94592
800-882-2684
WWW.STORMTECH.COM
800-882-2684
WWW.STORMTECH.COM
800-882-2684
WWW.STORMTECH.COM

4860 TREILMAN BLVD
VALLEJO, CA 94592
800-882-2684
WWW.STORMTECH.COM
800-882-2684
WWW.STORMTECH.COM
800-882-2684
WWW.STORMTECH.COM

4860 TREILMAN BLVD
VALLEJO, CA 94592
800-882-2684
WWW.STORMTECH.COM
800-882-2684
WWW.STORMTECH.COM
800-882-2684
WWW.STORMTECH.COM

4860 TREILMAN BLVD
VALLEJO, CA 94592
800-882-2684
WWW.STORMTECH.COM
800-882-2684
WWW.STORMTECH.COM
800-882-2684
WWW.STORMTECH.COM

4860 TREILMAN BLVD
VALLEJO, CA 94592
800-882-2684
WWW.STORMTECH.COM
800-882-2684
WWW.STORMTECH.COM
800-882-2684
WWW.STORMTECH.COM

4860 TREILMAN BLVD
VALLEJO, CA 94592
800-882-2684
WWW.STORMTECH.COM
800-882-2684
WWW.STORMTECH.COM
800-882-2684
WWW.STORMTECH.COM

4860 TREILMAN BLVD
VALLEJO, CA 94592
800-882-2684
WWW.STORMTECH.COM
800-882-2684
WWW.STORMTECH.COM
800-882-2684
WWW.STORMTECH.COM

4860 TREILMAN BLVD
VALLEJO, CA 94592
800-882-2684
WWW.STORMTECH.COM
800-882-2684
WWW.STORMTECH.COM
800-882-2684
WWW.STORMTECH.COM

4860 TREILMAN BLVD
VALLEJO, CA 94592
800-882-2684
WWW.STORMTECH.COM
800-882-2684
WWW.STORMTECH.COM
800-882-2684
WWW.STORMTECH.COM

4860 TREILMAN BLVD
VALLEJO, CA 94592
800-882-2684
WWW.STORMTECH.COM
800-882-2684
WWW.STORMTECH.COM
800-882-2684
WWW.STORMTECH.COM

4860 TREILMAN BLVD
VALLEJO, CA 94592
800-882-2684
WWW.STORMTECH.COM
800-882-2684
WWW.STORMTECH.COM
800-882-2684
WWW.STORMTECH.COM

4860 TREILMAN BLVD
VALLEJO, CA 94592
800-882-2684
WWW.STORMTECH.COM
800-882-2684
WWW.STORMTECH.COM
800-882-2684
WWW.STORMTECH.COM

4860 TREILMAN BLVD
VALLEJO, CA 94592
800-882-2684
WWW.STORMTECH.COM
800-882-2684
WWW.STORMTECH.COM
800-882-2684
WWW.STORMTECH.COM

4860 TREILMAN BLVD
VALLEJO, CA 94592
800-882-2684
WWW.STORMTECH.COM
800-882-2684
WWW.STORMTECH.COM
800-882-2684
WWW.STORMTECH.COM

4860 TREILMAN BLVD
VALLEJO, CA 94592
800-882-2684
WWW.STORMTECH.COM
800-882-2684
WWW.STORMTECH.COM
800-882-2684
WWW.STORMTECH.COM

4860 TREILMAN BLVD
VALLEJO, CA 94592
800-882-2684
WWW.STORMTECH.COM
800-882-2684
WWW.STORMTECH.COM
800-882-2684
WWW.STORMTECH.COM

4860 TREILMAN BLVD
VALLEJO, CA 94592
800-882-2684
WWW.STORMTECH.COM
800-882-2684
WWW.STORMTECH.COM
800-882-2684
WWW.STORMTECH.COM

4860 TREILMAN BLVD
VALLEJO, CA 94592
800-882-2684
WWW.STORMTECH.COM
800-882-2684
WWW.STORMTECH.COM
800-882-2684
WWW.STORMTECH.COM

4860 TREILMAN BLVD
VALLEJO, CA 94592
800-882-2684
WWW.STORMTECH.COM
800-882-2684
WWW.STORMTECH.COM
800-882-2684
WWW.STORMTECH.COM

4860 TREILMAN BLVD
VALLEJO, CA 94592
800-882-2684
WWW.STORMTECH.COM
800-882-2684
WWW.STORMTECH.COM
800-882-2684
WWW.STORMTECH.COM

4860 TREILMAN BLVD
VALLEJO, CA 94592
800-882-2684
WWW.STORMTECH.COM
800-882-2684
WWW.STORMTECH.COM
800-882-2684
WWW.STORMTECH.COM

4860 TREILMAN BLVD
VALLEJO, CA 94592
800-882-2684
WWW.STORMTECH.COM
800-882-2684
WWW.STORMTECH.COM
800-882-2684
WWW.STORMTECH.COM

4860 TREILMAN BLVD
VALLEJO, CA 94592
800-882-2684
WWW.STORMTECH.COM
800-882-2684
WWW.STORMTECH.COM
800-882-2684
WWW.STORMTECH.COM

4860 TREILMAN BLVD
VALLEJO, CA 94592
800-882-2684
WWW.STORMTECH.COM
800-882-2684
WWW.STORMTECH.COM
800-882-2684
WWW.STORMTECH.COM

4860 TREILMAN BLVD
VALLEJO, CA 94592
800-882-2684
WWW.STORMTECH.COM
800-882-2684
WWW.STORMTECH.COM
800-882-2684
WWW.STORMTECH.COM

4860 TREILMAN BLVD
VALLEJO, CA 94592
800-882-2684
WWW.STORMTECH.COM
800-882-2684
WWW.STORMTECH.COM
800-882-2684
WWW.STORMTECH.COM

4860 TREILMAN BLVD
VALLEJO, CA 94592
800-882-2684
WWW.STORMTECH.COM
800-882-2684
WWW.STORMTECH.COM
800-882-2684
WWW.STORMTECH.COM

4860 TREILMAN BLVD
VALLEJO, CA 94592
800-882-2684
WWW.STORMTECH.COM
800-882-2684
WWW.STORMTECH.COM
800-882-2684
WWW.STORMTECH.COM

4860 TREILMAN BLVD
VALLEJO, CA 94592
800-882-2684
WWW.STORMTECH.COM
800-882-2684
WWW.STORMTECH.COM
800-882-2684
WWW.STORMTECH.COM

4860 TREILMAN BLVD
VALLEJO, CA 94592
800-882-2684
WWW.STORMTECH.COM
800-882-2684
WWW.STORMTECH.COM
800-882-2684
WWW.STORMTECH.COM

4860 TREILMAN BLVD
VALLEJO, CA 94592
800-882-2684
WWW.STORMTECH.COM
800-882-2684
WWW.STORMTECH.COM
800-882-2684
WWW.STORMTECH.COM

4860 TREILMAN BLVD
VALLEJO, CA 94592
800-882-2684
WWW.STORMTECH.COM
800-882-2684
WWW.STORMTECH.COM
800-882-2684
WWW.STORMTECH.COM

4860 TREILMAN BLVD
VALLEJO, CA 94592
800-882-2684
WWW.STORMTECH.COM
800-882-2684
WWW.STORMTECH.COM
800-882-2684
WWW.STORMTECH.COM

4860 TREILMAN BLVD
VALLEJO, CA 94592
800-882-2684
WWW.STORMTECH.COM
800-882-2684
WWW.STORMTECH.COM
800-882-2684
WWW.STORMTECH.COM

4860 TREILMAN BLVD
VALLEJO, CA 94592
800-882-2684
WWW.STORMTECH.COM
800-882-2684
WWW.STORMTECH.COM
800-882-2684
WWW.STORMTECH.COM

4860 TREILMAN BLVD
VALLEJO, CA 94592
800-882-2684
WWW.STORMTECH.COM
800-882-2684
WWW.STORMTECH.COM
800-882-2684
WWW.STORMTECH.COM

4860 TREILMAN BLVD
VALLEJO, CA 94592
800-882-2684
WWW.STORMTECH.COM
800-882-2684
WWW.STORMTECH.COM
800-882-2684
WWW.STORMTECH.COM

4860 TREILMAN BLVD
VALLEJO, CA 94592
800-882-2684
WWW.STORMTECH.COM
800-882-2684
WWW.STORMTECH.COM
800-882-2684
WWW.STORMTECH.COM

4860 TREILMAN BLVD
VALLEJO, CA 94592
800-882-2684
WWW.STORMTECH.COM
800-882-2684
WWW.STORMTECH.COM
800-882-2684
WWW.STORMTECH.COM

4860 TREILMAN BLVD
VALLEJO, CA 94592
800-882-2684
WWW.STORMTECH.COM
800-882-2684
WWW.STORMTECH.COM
800-882-2684
WWW.STORMTECH.COM

4860 TREILMAN BLVD
VALLEJO, CA 94592
800-882-2684
WWW.STORMTECH.COM
800-882-2684
WWW.STORMTECH.COM
800-882-2684
WWW.STORMTECH.COM

4860 TREILMAN BLVD
VALLEJO, CA 94592
800-882-2684
WWW.STORMTECH.COM
800-882-2684
WWW.STORMTECH.COM
800-882-2684
WWW.STORMTECH.COM

4860 TREILMAN BLVD
VALLEJO, CA 94592
800-882-2684
WWW.STORMTECH.COM
800-882-2684
WWW.STORMTECH.COM
800-882-2684
WWW.STORMTECH.COM

4860 TREILMAN BLVD
VALLEJO, CA 94592
800-882-2684
WWW.STORMTECH.COM
800-882-2684
WWW.STORMTECH.COM
800-882-2684
WWW.STORMTECH.COM

4860 TREILMAN BLVD
VALLEJO, CA 94592
800-882-2684
WWW.STORMTECH.COM
800-882-2684
WWW.STORMTECH.COM
800-882-2684
WWW.STORMTECH.COM

4860 TREILMAN BLVD
VALLEJO, CA 94592
800-882-2684
WWW.STORMTECH.COM
800-882-2684
WWW.STORMTECH.COM
800-882-2684
WWW.STORMTECH.COM

4860 TREILMAN BLVD
VALLEJO, CA 94592
800-882-2684
WWW.STORMTECH.COM
800-882-2684
WWW.STORMTECH.COM
800-882-2684
WWW.STORMTECH.COM

4860 TREILMAN BLVD
VALLEJO, CA 94592
800-882-2684
WWW.STORMTECH.COM
800-882-2684
WWW.STORMTECH.COM
800-882-2684
WWW.STORMTECH.COM

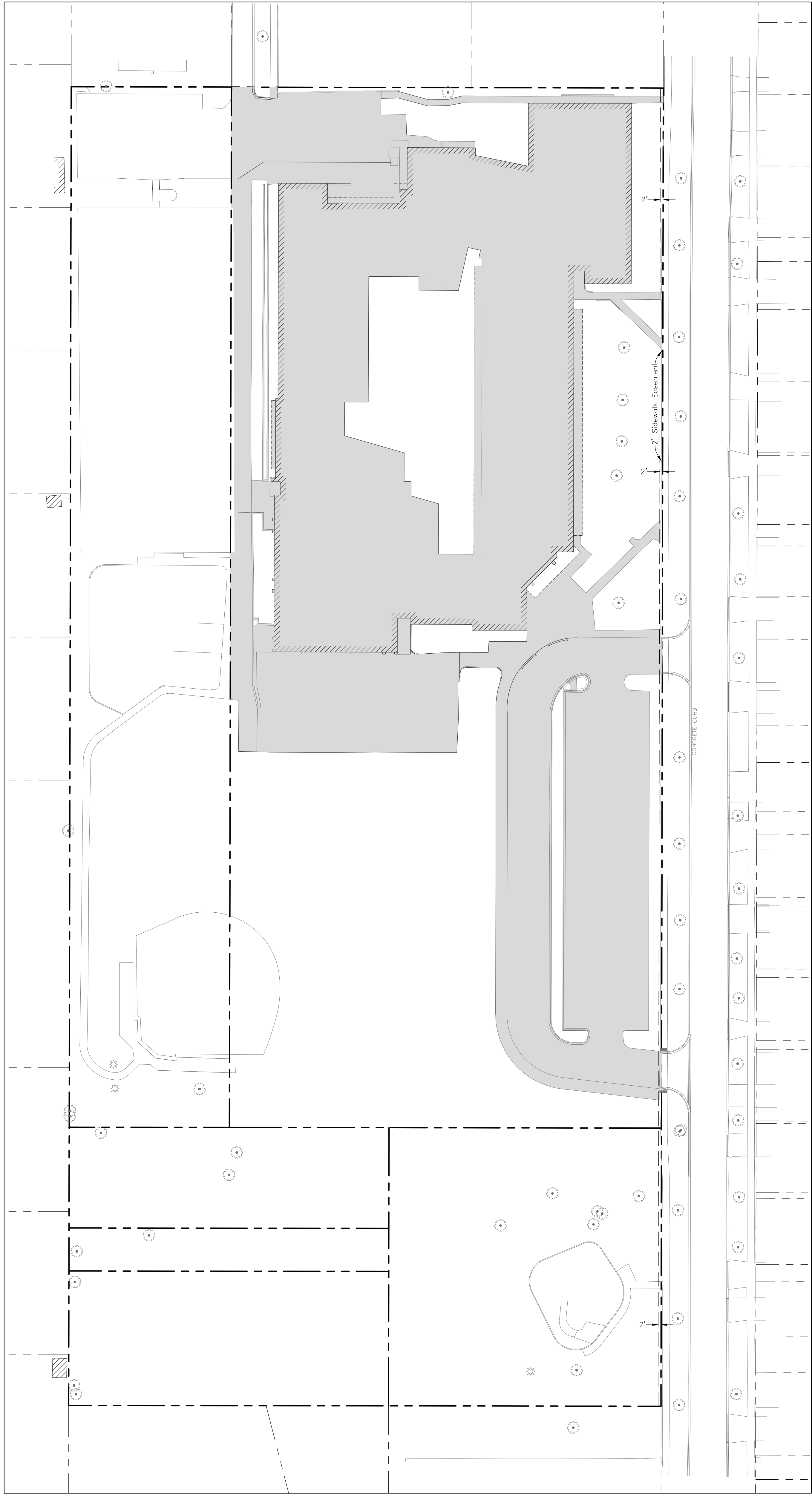
4860 TREILMAN BLVD
VALLEJO, CA 94592
800-882-2684
WWW.STORMTECH.COM
800-882-2684
WWW.STORMTECH.COM
800-882-2684
WWW.STORMTECH.COM

4860 TREILMAN BLVD
VALLEJO, CA 94592
800-882-2684
WWW.STORMTECH.COM
800-882-2684
WWW.STORMTECH.COM
800-882-2684
WWW.STORMTECH.COM

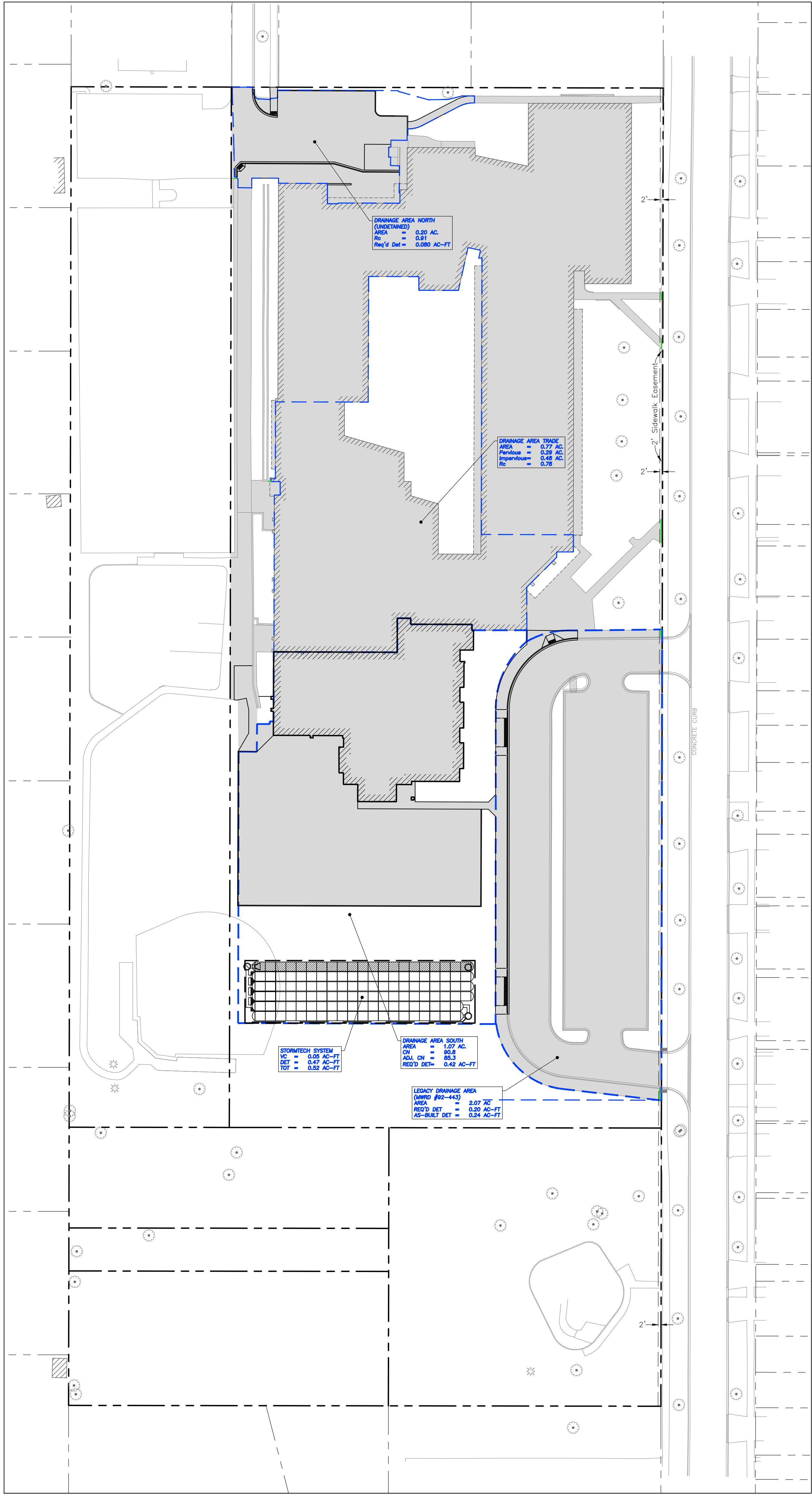
4860 TREILMAN BLVD
VALLEJO, CA 94592
800-882-2684
WWW.STORMTECH.COM
800-882-2684
WWW.STORMTECH.COM
800-882-2684
WWW.STORMTECH.COM

4860 TREILMAN BLVD
VALLEJO, CA 94592
800-882-2684
WWW.STORMTECH.COM
800-882-2684
WWW.STORMTECH.COM
800-882-2684
WWW.STORMTECH.COM

4860 TREILMAN BL



EXISTING CONDITIONS



PROPOSED CONDITIONS

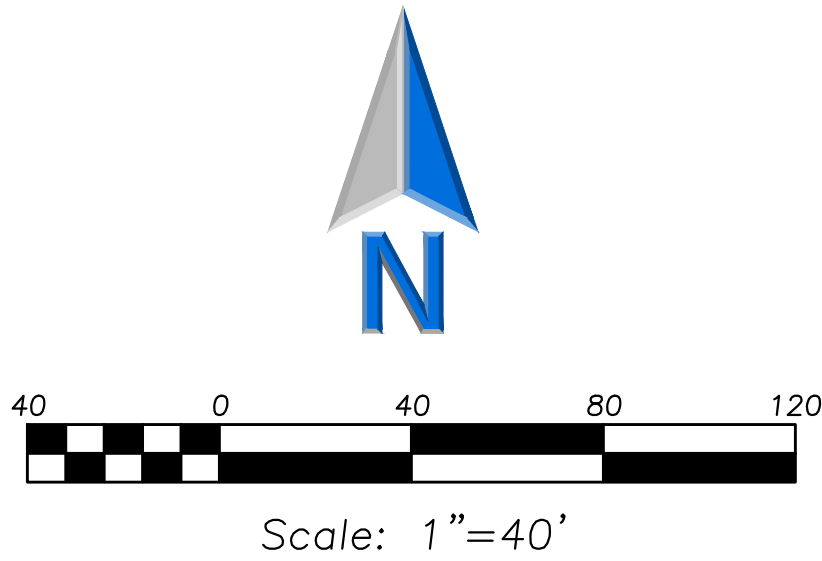


EXHIBIT LEGEND

- IMPERVIOUS AREA
- PROPERTY LINE 5.01 ACRES

EXISTING SITE CONDITIONS

IMPERVIOUS AREA
122,136 SF = 2.80 ACRES
PERVIOUS AREA
96,306 SF = 2.21 ACRES
RUNOFF COEFFICIENT
C = 0.75

PROPOSED SITE CONDITIONS

IMPERVIOUS AREA
138,630 SF = 3.18 ACRES
PERVIOUS AREA
76,612 SF = 1.83 ACRES
RUNOFF COEFFICIENT
C = 0.79

SUMMARY

IMPERVIOUS AREA
= +0.38 ACRES
PERVIOUS AREA
= -0.38 ACRES

DRYDEN ELEMENTARY SCHOOL
BUILDING ADDITION AND RENOVATIONS
722 S. DRYDEN PLACE
ARLINGTON HEIGHTS, ILLINOIS



Reserved for Seal:

No.	Date	Description
11/17/22	11/17/22	ISSUE FOR PLAN COMMISSION
01/06/23	01/06/23	REVISED FOR PLAN COMMISSION
01/18/23	01/18/23	REVISED FOR PLAN COMMISSION

Design By:	Approved By:	Date:
RMS	TLH	11/17/22

Sheet Title:
DRAINAGE EXHIBIT

Sheet No:
CX101

NOT FOR CONSTRUCTION