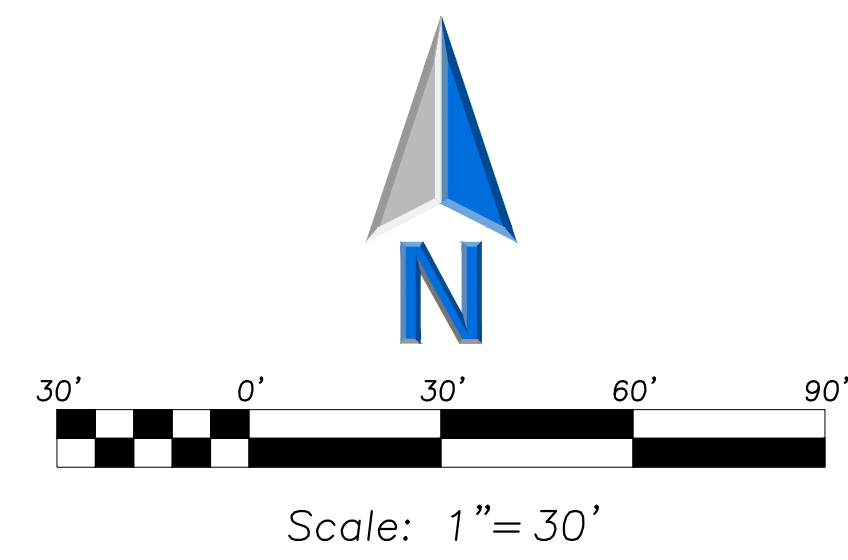
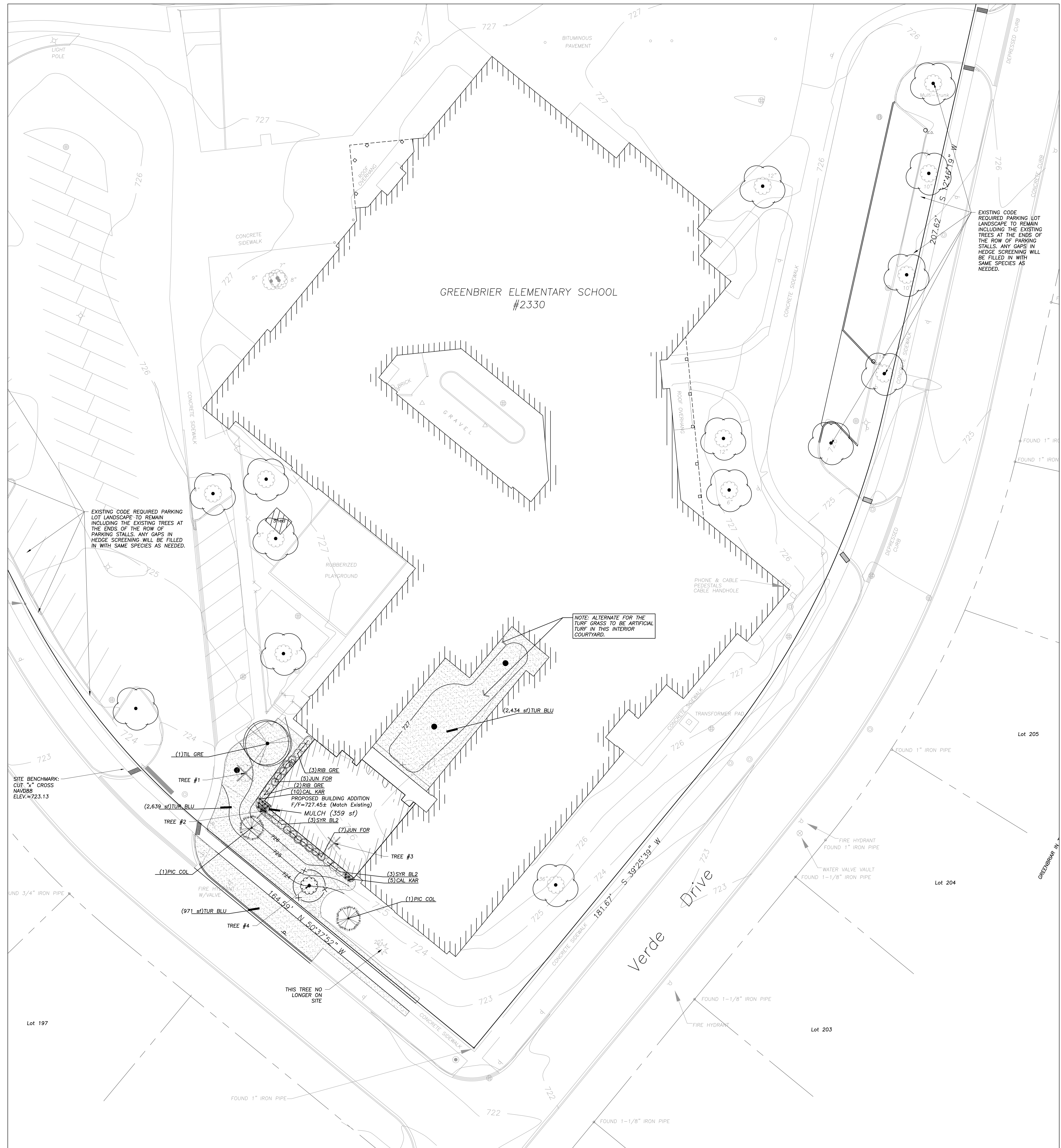


EA - F:\Jasha\Arlington Heights School Dist 25\2022 Kindergarten Additions\Drawings\Greenbrier\Landscape plan - Greenbrier.dwg
 Plotted: 2/03/23 @ 12:57pm By: sgregory



PLANT SCHEDULE

CANOPY TREES	BOTANICAL / COMMON NAME	COND	SIZE	QTY
TIL GRE	TILIA CORDATA 'GREENSPIRE' / GREENSPIRE LITTLELEAF LINDEN	B & B	4" CAL.	1
EVERGREEN TREES	BOTANICAL / COMMON NAME	COND	SIZE	QTY
PIC COL	PICEA PUNGENS 'COLORADO GREEN' / COLORADO GREEN SPRUCE	B & B	8" HT.	2
DECIDUOUS SHRUBS	BOTANICAL / COMMON NAME	COND	SIZE	QTY
RIB GRE	RIBES ALPINUM 'GREEN MOUND' / GREEN MOUND ALPINE CURRANT	B & B	30" HT.	5
SYR BL2	SYRINGA X 'BLOOMERANG' / BLOOMERANG LILAC	B & B	30" HT.	6
EVERGREEN SHRUBS	BOTANICAL / COMMON NAME	COND	SIZE	QTY
JUN FOR	JUNIPERUS CHINENSIS 'SEA GREEN' / SEA GREEN JUNIPER	B & B	24" SPREAD	12
GRASSES	BOTANICAL / COMMON NAME	COND	SIZE	QTY
CAL KAR	CALAMAGROSTIS X ACUTIFLORA 'KARL FOERSTER' / FEATHER REED GRASS	CONT.	1 GAL.	15
TURF GRASS	BOTANICAL / COMMON NAME	COND	SIZE	QTY
TUR BLU	TURF SOD BLUEGRASS / KENTUCKY BLUEGRASS	SOD	S.F.	6,044 SF

SITE MATERIALS SCHEDULE

	EXISTING DECIDUOUS TREE	14
	MULCH	359 SF

LANDSCAPE NOTES:

- PLANT QUANTITIES SHOWN IN THE PLANT SCHEDULE ARE FOR CONVENIENCE ONLY. THE CONTRACTOR IS RESPONSIBLE FOR PROVIDING AND INSTALLING ALL MATERIALS SHOWN ON THE PLAN AND SHOULD NOT RELY ON THE PLANT SCHEDULE FOR DETERMINING QUANTITIES.
- ALL PLANT MATERIALS SHALL BE NURSERY GROWN STOCK AND SHALL BE FREE FROM ANY DEFORMITIES, DISEASES OR INSECT DAMAGE. ANY MATERIALS WITH DAMAGED OR CROOKED/DISFIGURED LEADERS, BARK ABRASION, SUNSCALD, INSECT DAMAGE, ETC. ARE NOT ACCEPTABLE AND WILL BE REJECTED. TREES WITH MULTIPLE LEADERS WILL BE REJECTED UNLESS CALLED OUT IN THE PLANT SCHEDULE AS MULTI-STEM. NO PRUNING TO BE DONE AT THE TIME OF INSTALLATION EXCEPT FOR DEAD OR BROKEN LIMBS.
- ALL LANDSCAPE IMPROVEMENTS SHALL MEET MUNICIPALITY REQUIREMENTS AND GUIDELINES, WHICH SHALL BE VERIFIED BY MUNICIPAL AUTHORITIES.
- ALL PLANTING OPERATIONS SHALL BE COMPLETED IN ACCORDANCE WITH STANDARD HORTICULTURAL PRACTICES. THIS MAY INCLUDE, BUT NOT BE LIMITED TO, PROPER PLANTING BED AND TREE PIT PREPARATION, PLANTING MIX, PRUNING, STAKING AND GUYING, WRAPPING, SPRAYING, FERTILIZATION, PLANTING AND ADEQUATE MAINTENANCE OF MATERIALS DURING CONSTRUCTION ACTIVITIES.
- ALL PLANT MATERIALS SHALL BE INSPECTED AND APPROVED BY THE LANDSCAPE ARCHITECT PRIOR TO INSTALLATION. ANY MATERIALS INSTALLED WITHOUT APPROVAL MAY BE REJECTED.
- THE CONTRACTOR SHALL GUARANTEE PLANT MATERIALS FOR A PERIOD OF ONE YEAR FROM DATE OF ACCEPTANCE BY OWNER. THE CONTRACTOR SHALL OUTLINE PROPER MAINTENANCE PROCEDURES TO THE OWNER AT THE TIME OF ACCEPTANCE. DURING THE GUARANTEE PERIOD, DEAD OR DISEASED MATERIALS SHALL BE REPLACED AT NO COST TO THE OWNER. AT THE END OF THE GUARANTEE PERIOD THE CONTRACTOR SHALL OBTAIN FINAL ACCEPTANCE FROM THE OWNER.
- ANY EXISTING TREES TO BE RETAINED SHALL BE PROTECTED FROM SOIL COMPACTION AND OTHER DAMAGES THAT MAY OCCUR DURING CONSTRUCTION ACTIVITIES BY ERECTING FENCING AROUND SUCH MATERIALS AT A DISTANCE OF 8.5' FROM THE TRUNK.
- ALL GRASS, CLUMPS, OTHER VEGETATION, DEBRIS, STONES, ETC., SHALL BE RAKED OR OTHERWISE REMOVED FROM PLANTING AND LAWN AREAS PRIOR TO INITIATION OF INSTALLATION PROCEDURES.
- THE CONTRACTOR SHALL VERIFY THE LOCATIONS OF ALL UNDERGROUND UTILITIES PRIOR TO INITIATING PLANTING OPERATIONS. THE CONTRACTOR SHALL REPAIR/REPLACE AND UTILITY, PAVING, CURBING, ETC., WHICH IS DAMAGED DURING PLANTING OPERATIONS.
- SIZE AND GRADING STANDARDS OF PLANT MATERIALS SHALL CONFORM TO THE LATEST EDITION OF ANSI Z60.1, AMERICAN STANDARDS FOR NURSERY STOCK, BY THE AMERICAN NURSERY & LANDSCAPE ASSOCIATION.
- REFER TO PLAT OF SURVEY FOR LEGAL DESCRIPTION, BOUNDARY DIMENSIONS AND EXISTING CONDITIONS.
- ALL PLANT MATERIAL ON THIS PLANTING PLAN REPRESENTS THE INTENTION AND INTENSITY OF THE PROPOSED LANDSCAPE MATERIAL. THE EXACT SPECIES AND LOCATIONS MAY VARY IN THE FIELD DO TO MODIFICATIONS IN THE SITE IMPROVEMENTS AND THE AVAILABILITY OF PLANT MATERIAL AT THE TIME OF INSTALLATION. ANY SUCH CHANGES MUST FIRST BE APPROVED BY THE CITY IN WRITING.
- ALL PLANT MATERIAL SHALL BE PLANTED WITH A MINIMUM OF SIX INCHES OF ORGANIC SOIL AND MULCHED WITH A SHREDDED BARK MATERIAL TO A MINIMUM 3" DEPTH.
- ALL BEDS SHALL BE EDGED, HAVE WEED PREEMERGENTS APPLIED AT THE RECOMMENDED RATE.
- ALL PARKWAYS SHALL HAVE LAWN ESTABLISHED WITH SEED A GROUNDCOVER, UNLESS OTHERWISE NOTED.
- ALL LAWN AREAS ON THIS PLAN SHALL BE GRADED SMOOTH AND TOPPED WITH AT LEAST 6" OF TOPSOIL. ALL LAWN AREAS TO BE ESTABLISHED USING SEED BLANKET UNLESS OTHERWISE NOTED. BLANKET TO BE 575 OR APPROVED EQUAL.
- THIS LANDSCAPE PLAN ASSUMES THE SITE WILL BE PREPARED WITH TOP SOIL SUITABLE FOR THE ESTABLISHMENT OF THE LANDSCAPE MATERIAL PRESENTED ON THIS PLAN. IF ADDITIONAL TOP SOIL IS REQUIRED IT IS UP TO THE LANDSCAPE CONTRACTOR ON THE PROJECT TO PROVIDE, SPREAD AND PREPARE THE SITE AS NEEDED FOR THE IMPLEMENTATION OF THIS LANDSCAPE PLAN.
- CONTRACTORS MUST VERIFY ALL QUANTITIES AND OBTAIN ALL PROPER PERMITS AND LICENSES FROM THE PROPER AUTHORITIES.
- ALL MATERIAL MUST MEET INDUSTRY STANDARDS AND THE LANDSCAPE ARCHITECT HAS THE RIGHT TO REFUSE ANY POOR MATERIAL OR WORKMANSHIP.
- LANDSCAPE ARCHITECT IS NOT RESPONSIBLE FOR UNSEEN SITE CONDITIONS.
- ALL PLANTINGS SHALL BE SPACED EQUAL DISTANT, BACK FILLED WITH AMENDED SOIL IN A HOLE TWICE THE ROOTBALL DIAMETER, WATERED, FERTILIZED, PRUNED, AND HAVE ALL TAGS AND ROPES REMOVED.
- LAWN AND BED AREAS SHALL BE ROTOTILLED, RAKED OF CLUMPS AND DEBRIS.
- REMOVE ALL DEAD AND DISEASED PLANT MATERIAL FROM SITE AND DISPOSE OF PROPERLY.
- PLANTS TO BE PLANTED SO THAT ROOT FLARE IS AT THE GRADE OF THE AREA WHERE PLANTED. NO PRUNING TO BE DONE AT THE TIME OF INSTALLATION EXCEPT TO REMOVE DEAD OR BROKEN LIMBS.

EXISTING TREE INVENTORY: (Development Area Only)

Tree #	BOTANICAL NAME	COMMON NAME	TREE SIZE	CONDITION	COMMENTS
1	Tilia cordata	Littleleaf Linden	4" Cal.	Good	
2	Picea pungens	Colorado Spruce	12' Ht.	Good	
3	Picea pungens	Colorado Spruce	12' Ht.	Good	
4	Tilia cordata	Littleleaf Linden	12" Cal.	Good	

TREE PRESERVATION NOTES:

- ANY EXISTING TREES TO BE RETAINED SHALL BE PROTECTED FROM SOIL COMPACTION AND OTHER DAMAGES THAT MAY OCCUR DURING CONSTRUCTION ACTIVITIES BY ERECTING FENCING AROUND SUCH MATERIALS. FENCE TO BE PLACED AT THE DRIP LINE OF THE TREE.
- THE CONTRACTOR SHALL VERIFY THE LOCATIONS OF ALL UNDERGROUND UTILITIES PRIOR TO INITIATING PLANTING OPERATIONS. THE CONTRACTOR SHALL REPAIR/REPLACE AND UTILITY, PAVING, CURBING, ETC., WHICH IS DAMAGED DURING PLANTING AND TREE REMOVAL OPERATIONS.
- REFER TO PLAT OF SURVEY FOR LEGAL DESCRIPTION, BOUNDARY DIMENSIONS AND EXISTING CONDITIONS.
- CONTRACTORS MUST VERIFY ALL QUANTITIES AND OBTAIN ALL PROPER PERMITS AND LICENSES FROM THE PROPER AUTHORITIES.
- LANDSCAPE ARCHITECT IS NOT RESPONSIBLE FOR UNSEEN SITE CONDITIONS.
- REMOVE ALL DEAD AND DISEASED PLANT MATERIAL FROM SITE AND DISPOSE OF PROPERLY.
- PRUNE AND FERTILIZE ALL EXISTING VEGETATION TO REMAIN ON SITE.
- TREE SYMBOL WITH NUMBER INDICATES EXISTING TREE TO REMAIN.
- TREE SYMBOL WITH NUMBER AND AN "X" INDICATES EXISTING TREE TO BE REMOVED.

ERIKSSON ENGINEERING ASSOCIATES, LTD.
 145 COMMERCE DRIVE, SUITE A
 GRAYSLAKE, ILLINOIS 60030
 PHONE: (847) 223-4804
 FAX: (847) 223-4864
 EMAIL: INFO@EEA-LTD.COM
 PROFESSIONAL DESIGN FIRM
 LICENSE NO. 184-0033210
 EXPIRES: 04/30/2023

GREENBRIER ELEMENTARY SCHOOL BUILDING ADDITIONS
 2330 N. VERDE DRIVE
 ARLINGTON HEIGHTS, ILLINOIS

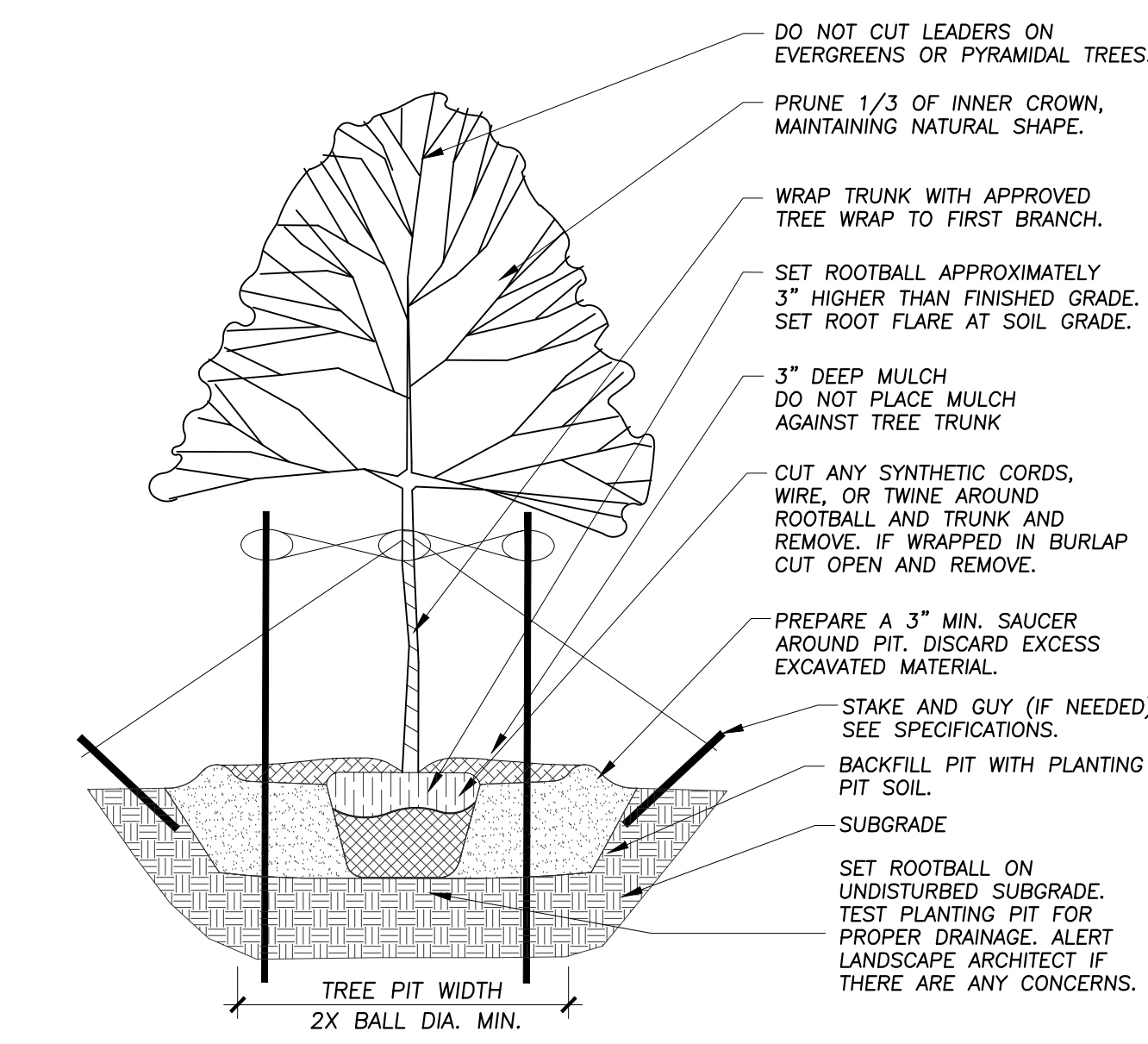
Reserved for Seal:

No.	Date	Description
	12/06/2022	ISSUE FOR PLAN COMMISSION
Δ	02/03/2023	REVISED FOR PLAN COMMISSION

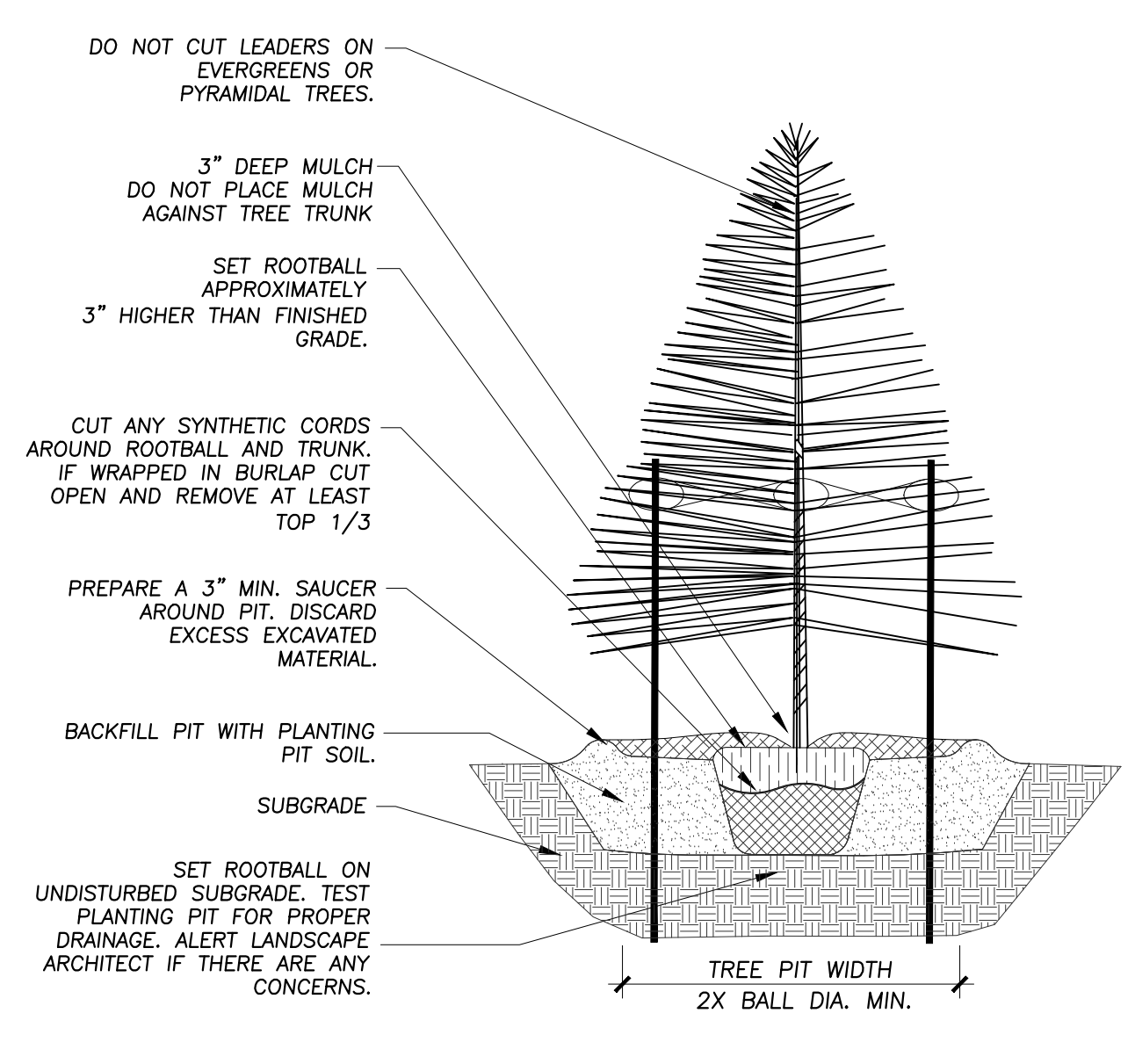
Design By: SSG Approved By: JC Date: 02/03/2023

LANDSCAPE PLAN

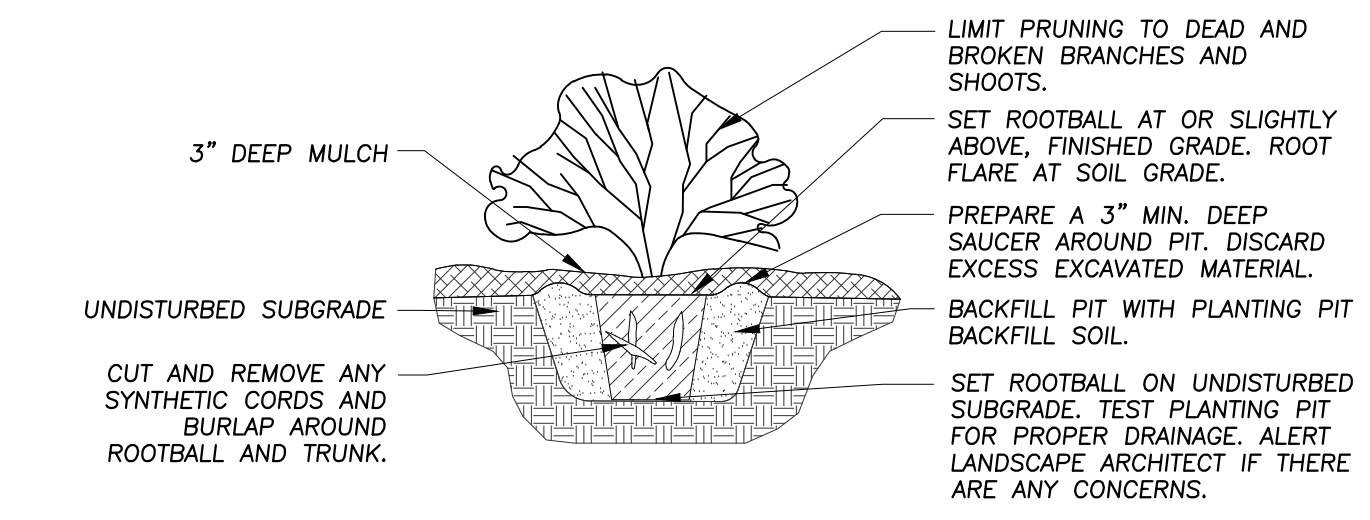
Sheet No: **L100**



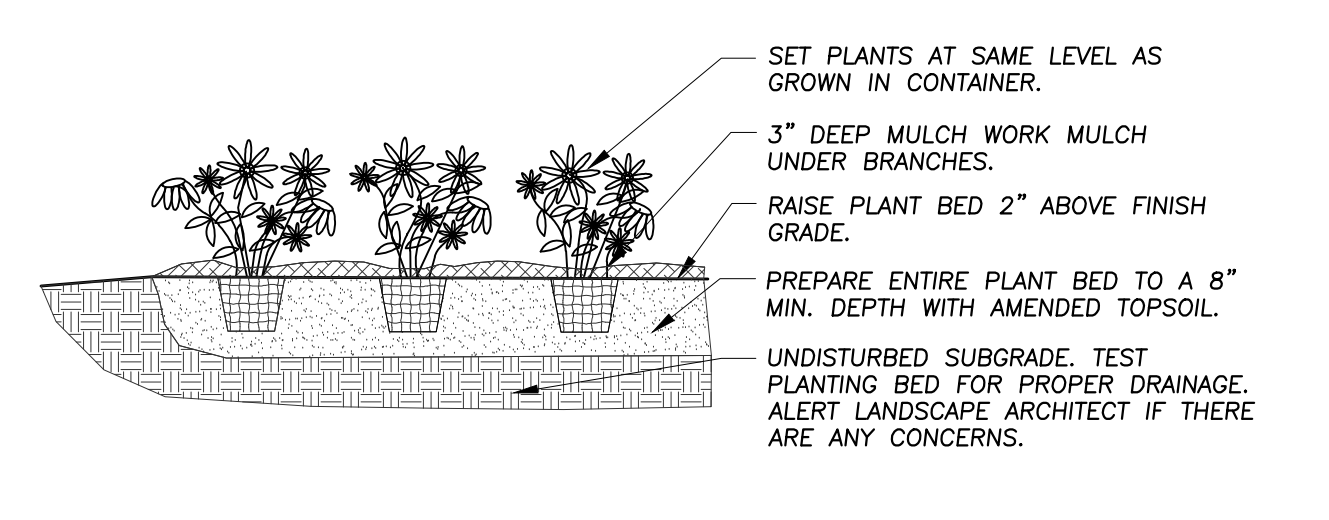
1 TREE PLANTING DETAIL
Not To Scale 329343-01



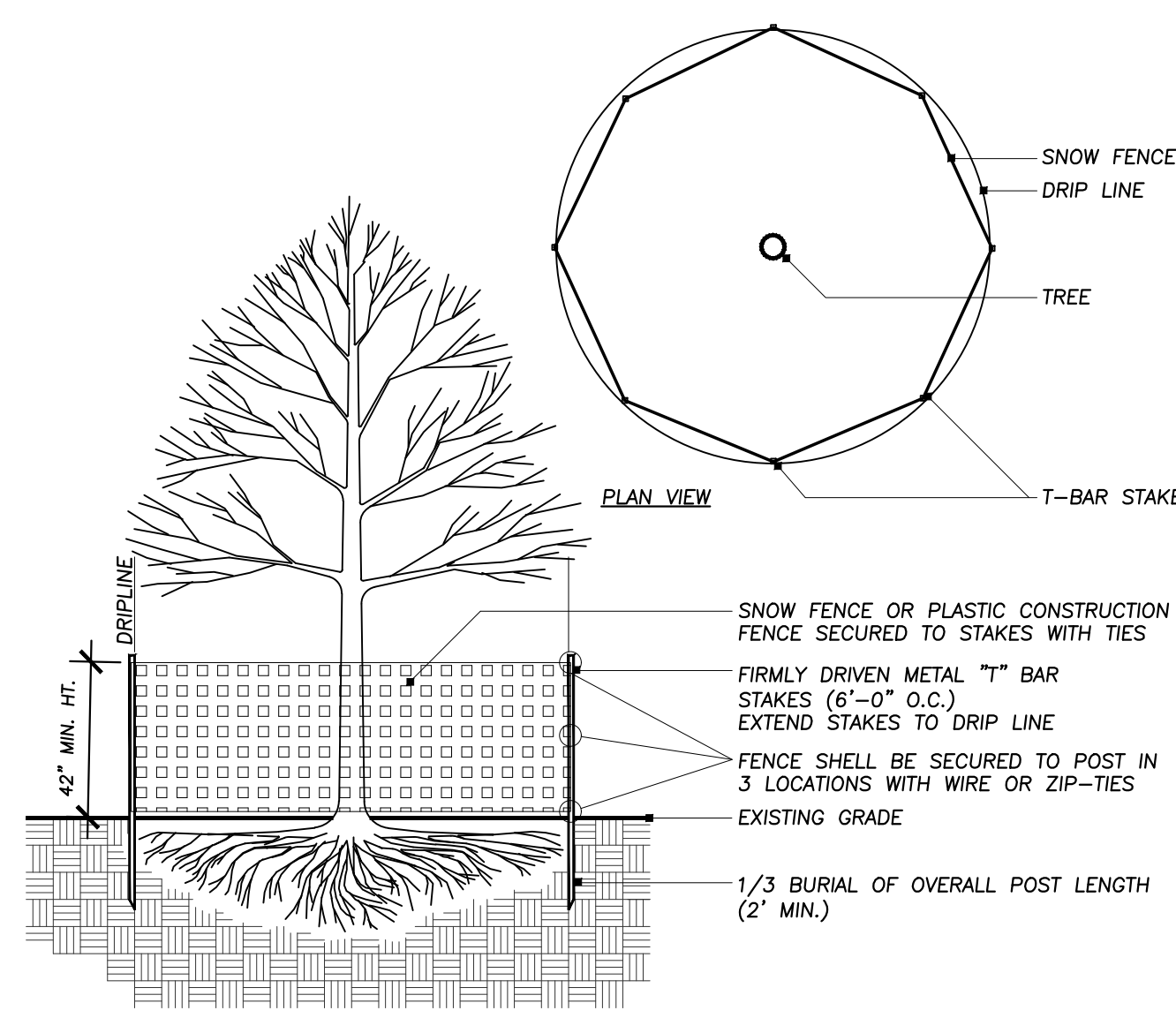
2 EVERGREEN TREE PLANTING DETAIL
NOT TO SCALE 329343-02



3 SHRUB PLANTING DETAIL
Not To Scale 329333-01



4 ANNUAL, PERENNIAL, & GROUNDCOVER DETAIL
Not To Scale 329301-03



5 TREE PROTECTION DETAIL
Not To Scale 329383-01

**GREENBRIER ELEMENTARY SCHOOL
BUILDING ADDITIONS**
2330 N. VERDE DRIVE
ARLINGTON HEIGHTS, ILLINOIS

Reserved for Seal:

No.	Date	Description
	12/06/2022	ISSUE FOR PLAN COMMISSION
Δ	02/03/2023	REVISED FOR PLAN COMMISSION

© ERIKSSON ENGINEERING ASSOCIATES, LTD. 2022
ALL RIGHTS RESERVED. NO PART OF THIS DOCUMENT IS TO BE REPRODUCED OR TRANSMITTED IN ANY FORM OR BY ANY MEANS, ELECTRONIC OR MECHANICAL, INCLUDING PHOTOCOPYING, RECORDING, OR BY ANY INFORMATION STORAGE AND RETRIEVAL SYSTEM.
Design By: SSG Approved By: JC Date: 02/03/2023

Sheet Title:
**LANDSCAPE
DETAILS**

Sheet No:
L200