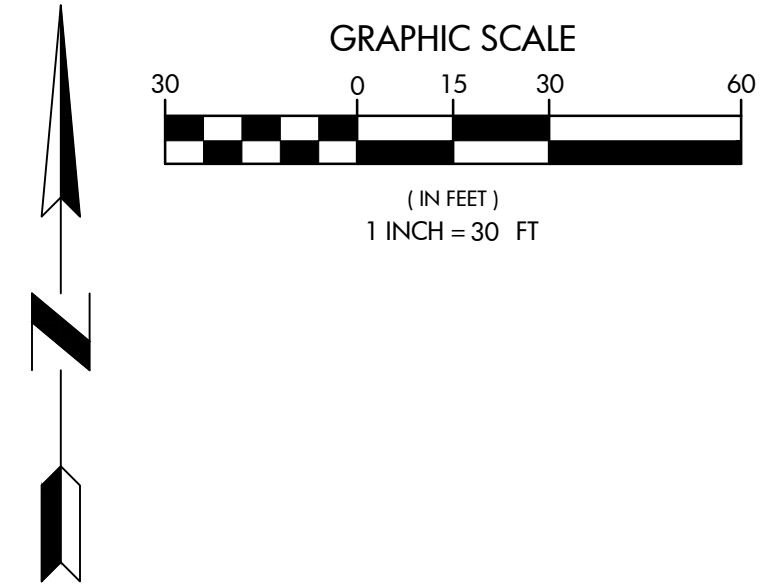


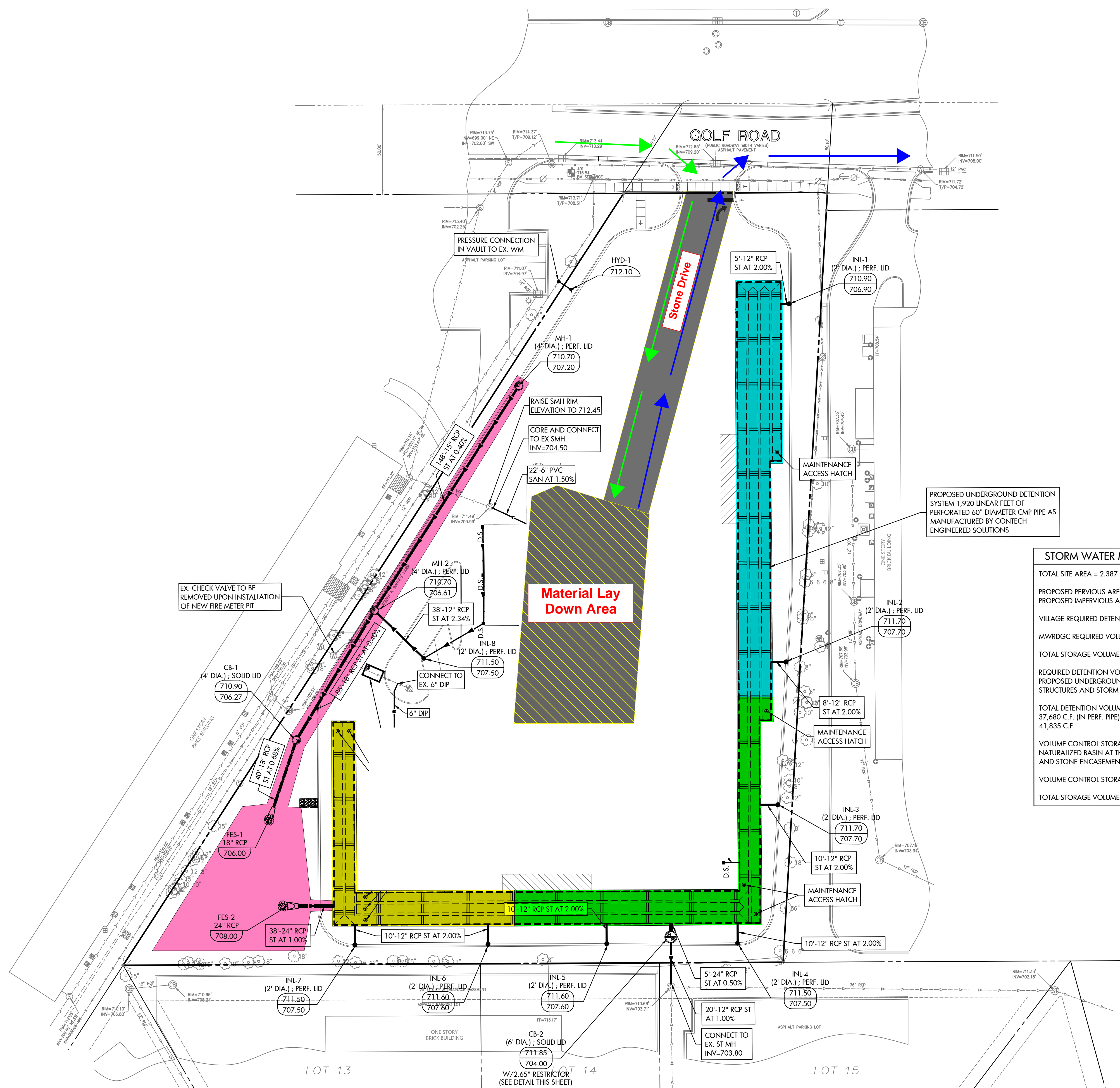
Proposed Self Storage - Underground Detention Staging Plan



Legend

Phase 1 -		Trucks In -	→
Phase 2 -			
Phase 3 -		Trucks Out -	→
Phase 4 -			

***Depth of excavation will be 10'-0"**



STORM WATER MANAGEMENT SUMMARY

TOTAL SITE AREA = 2.387 AC
PROPOSED PERVIOUS AREA = 0.533 AC
PROPOSED IMPERVIOUS AREA = 1.854 AC
VILLAGE REQUIRED DETENTION VOLUME = 40,068 C.F.
MWRDGC REQUIRED VOLUME CONTROL STORAGE = 6,752 C.F.
TOTAL STORAGE VOLUME REQUIRED = 46,820 C.F.
REQUIRED DETENTION VOLUME WILL BE PROVIDED BY THE PROPOSED UNDERGROUND DETENTION SYSTEM, STORM STRUCTURES AND STORM PIPING.
TOTAL DETENTION VOLUME PROVIDED = 37,680 C.F. (IN PERF. PIPE) + 4,155 C.F. (IN STONE ENCASEMENT) = 41,835 C.F.
VOLUME CONTROL STORAGE WILL BE PROVIDED BY THE PROPOSED NATURALIZED BASIN AT THE SOUTHWEST CORNER OF THE SITE AND STONE ENCASEMENT BELOW PERVIOUS PIPES.
VOLUME CONTROL STORAGE PROVIDED BY BASIN = 6,125 C.F.
TOTAL STORAGE VOLUME PROVIDED BY PROJECT = 47,960 C.F.

A
B
C
D
E

1 2 3 4 5 6 7 8

1 2 3 4 5 6 7 8