



To: Sam Hubbard
Development Planner
Department of Planning and Community Development
Village of Arlington Heights

From: Ryan Schulz
Director of Facilities Management
Arlington Heights School District 25

Date: December 2nd, 2022

Re: Windsor Elementary School Expansion Neighborhood Meeting November 2nd, 2022

Sam,

On November 2nd, 2022 at 6:00 pm, we hosted the required neighborhood meeting for property owners within 250' of the subject property to give a brief overview of the project scope and answer any questions they may have. The meeting was held in the commons at Windsor Elementary School. There were (2) neighbors in attendance at the meeting. Below are the questions the attendees asked during the presentation and our initial response based on the current progress of the design. I have also included a copy of the sign-in sheet as well as the presentation that was used for the neighbors.

- **What are the general logistics for trucks, hours of work, and construction traffic?**
 - Per village ordinance, construction cannot commence before 7:00 am on weekdays and cannot proceed past 7:00 pm. Typically during past projects, we have seen construction typically wrap up by 3:00 pm on weekdays with occasional times when work progresses later in the permitted working hours. The site will also have construction fencing around the entire work area in an attempt to limit trespassing. The construction management firm will coordinate truck staging and deliveries to limit impacts on the school operations.
- **Is the addition going to be 2 stories?**
 - The currently proposed addition is a one-story brick addition with similar features to the most recent addition on the southern end of the building. We are exploring the possibility of structurally reinforcing the addition so it could accommodate a second story in the future if building enrollment or program needs of the school / District warrant an expansion.

AHSD25 Meeting Attendees: Dr. Lori Bein, Superintendent, Ryan Schulz, Director of Facilities Management.

Sincerely,

Ryan Schulz
Director of Facilities Management



Arlington Heights School District 25 - Neighborhood Meeting Sign In Sheet

Meeting: Windsor Elementary School Addition

Facilitator: Arlington Heights School District 25

Date: November 2nd, 2022

Place/Room: Windsor Elementary School Commons

Time: 6:00pm

PRINT NAME	Address	Phone
1. Kachur L. Miles	1218 E. Campbell Crd. Hgt.	847 873 5507
2. Gina O'Donnell	1317. E Campbell AH	847-534-5300
3.		
4.		
5.		
6.		
7.		
8.		
9.		
10.		
11.		
12.		
13.		
14.		
15.		
16.		
17.		
18.		
19.		
20.		
21.		
22.		
23.		
24.		
25.		



Windsor Expansion Neighborhood Review Meeting

November 2nd, 2022





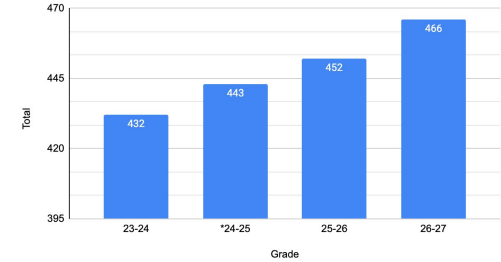
Windsor Expansion

Why Now?

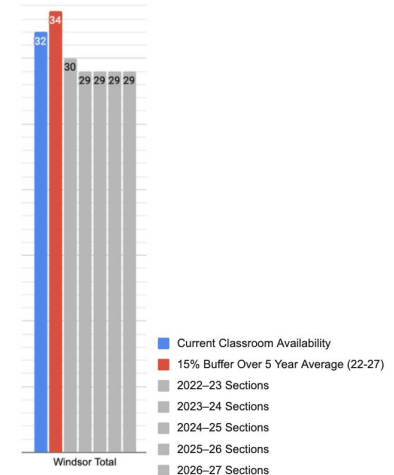
- **Full Day Kindergarten Program**
 - *Need additional classrooms since currently (1) single classroom can be shared between AM section and PM section.*
- **Increase in Enrollment**
 - *Anticipated Kindergarten enrollment bump due to transition to full day model.*
 - *Slight General Enrollment Increase.*
- **Expansion Allows Flexibility For School to Provide Educational Services**

Proposed addition will support future enrollment, full day K, provide and allow the building flexibility in their programming and support services.

Windsor Anticipated Enrollment

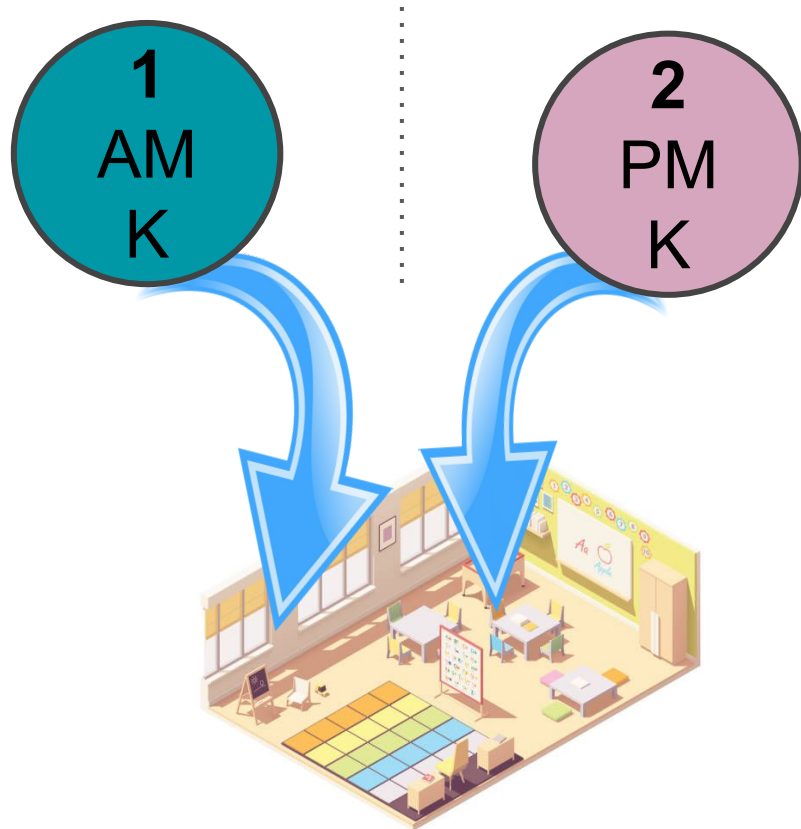


*24-25 First Year of Full Day K

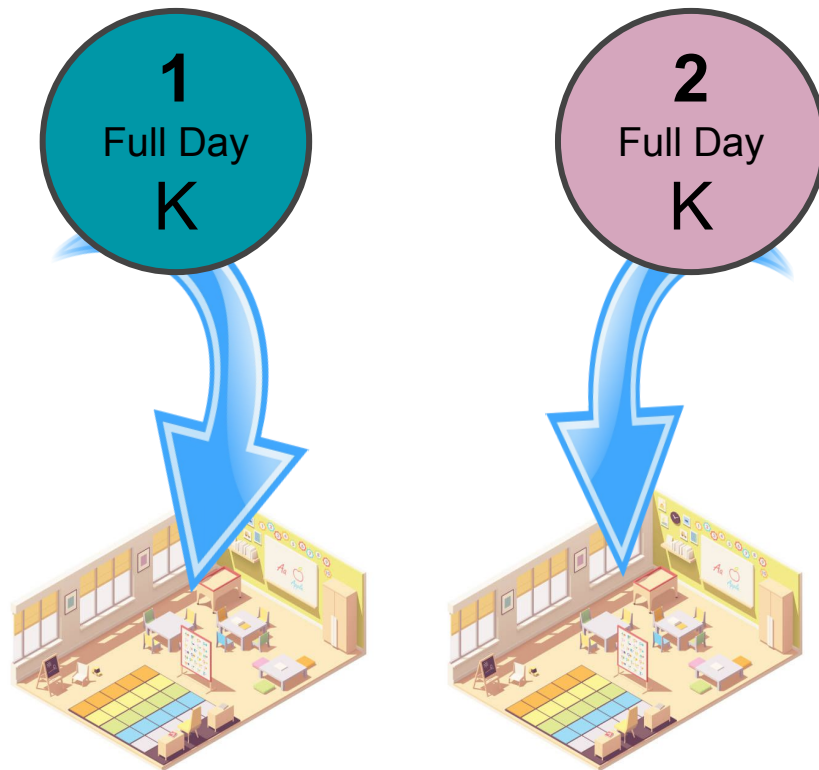




Half Day K Model



Full Day K Model

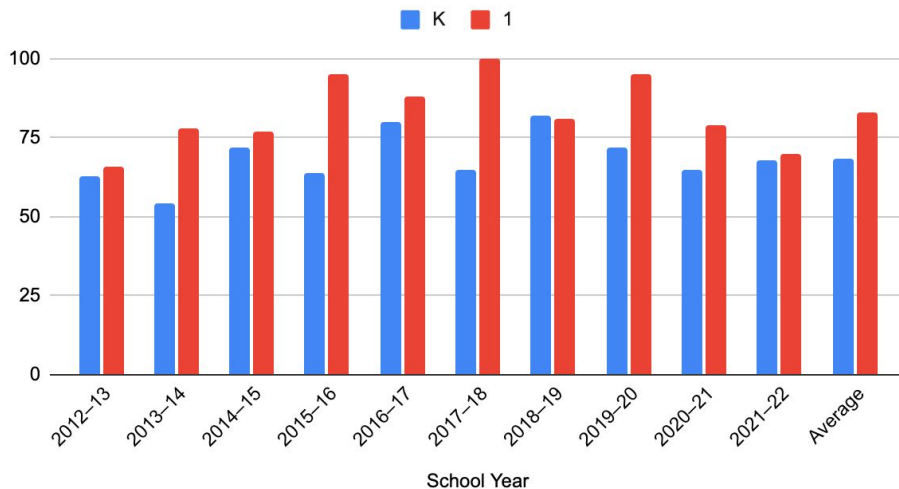




Anticipated Kindergarten Enrollment Bump

- Kindergarten enrollment is currently lower than first grade enrollment due to the current ½ day kindergarten model
- Parents currently choose other Kindergarten options to provide full day learning opportunities.
- Kindergarten enrollment is expected to be more aligned with first grade enrollment once Full Day K is implemented as parents choose to send their child to their neighborhood school.

Windsor K vs 1st Grade Enrollment





Windsor Elementary School

1315 E. Miner Street | Arlington Heights, IL 60005



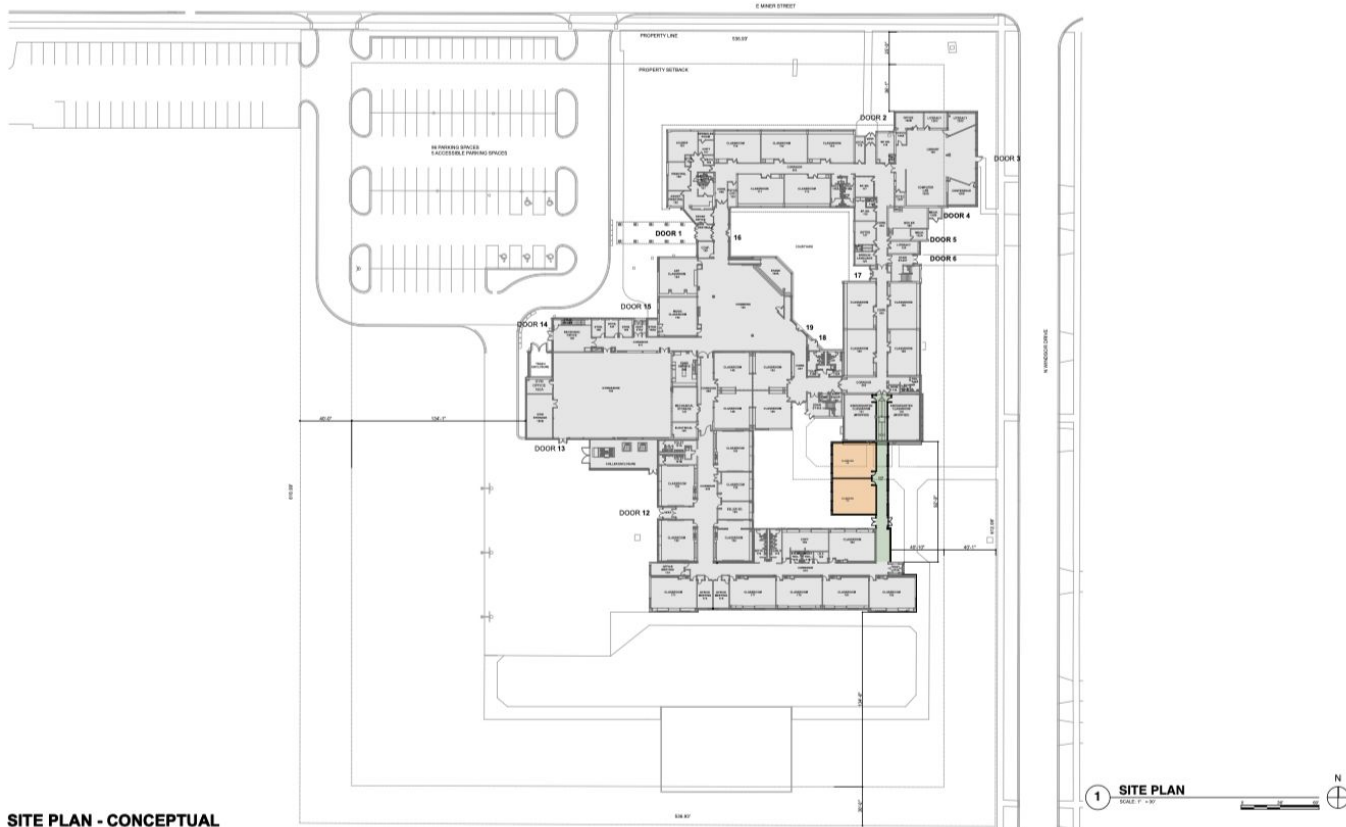
CONCEPTUAL LOCATION MAP

November 2nd, 2022



Windsor Elementary School

1315 E. Miner Street | Arlington Heights, IL 60005



SITE PLAN - CONCEPTUAL

STR
BTR Partners, LLC
350 West Ontario Street | Suite 200
Chicago, IL 60654
www.btrpartners.com

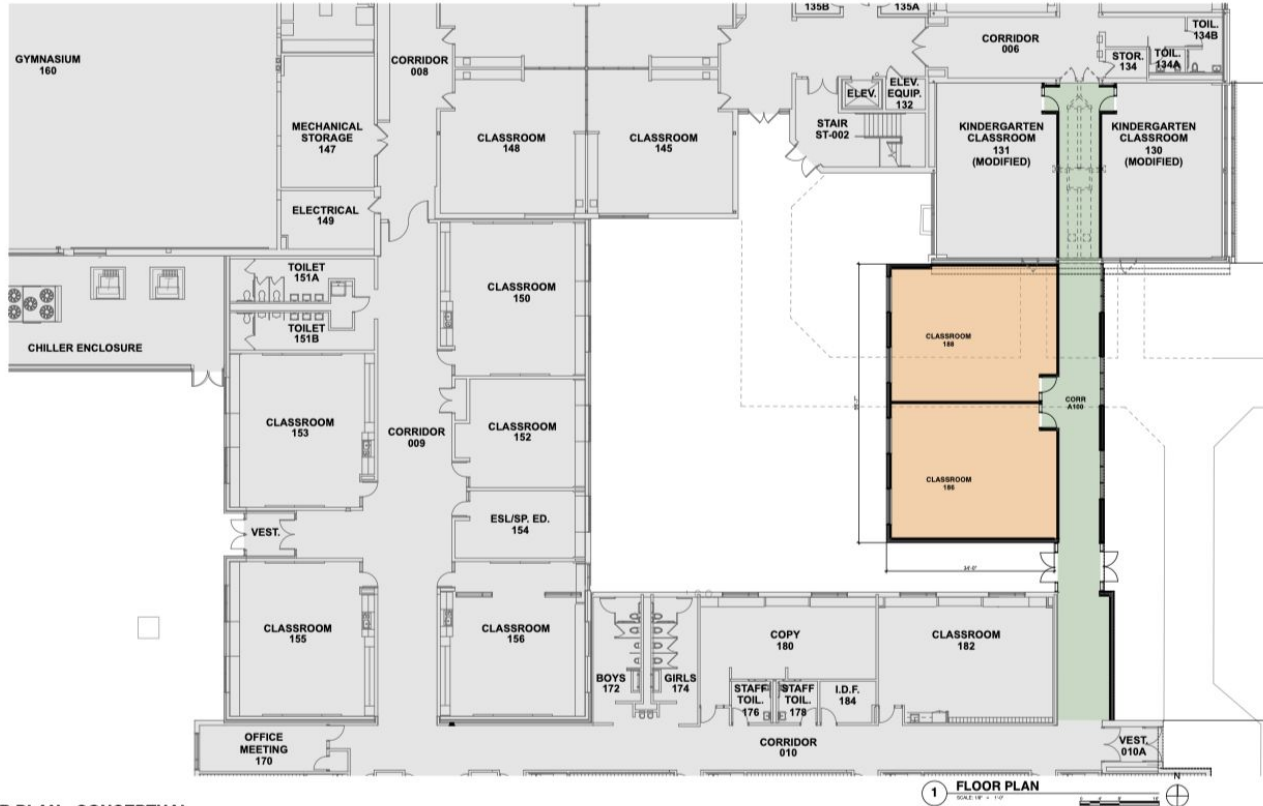
November 2nd, 2022

WINDSOR ELEMENTARY SCHOOL
1315 East Miner Street, Arlington Heights, IL 60004
ARLINGTON HEIGHTS SCHOOL DISTRICT 25
10/6/22



Windsor Elementary School

1315 E. Miner Street | Arlington Heights, IL 60005



FLOOR PLAN - CONCEPTUAL

November 2nd, 2022



Windsor Elementary School

1315 E. Miner Street | Arlington Heights, IL 60005



Parking and Traffic

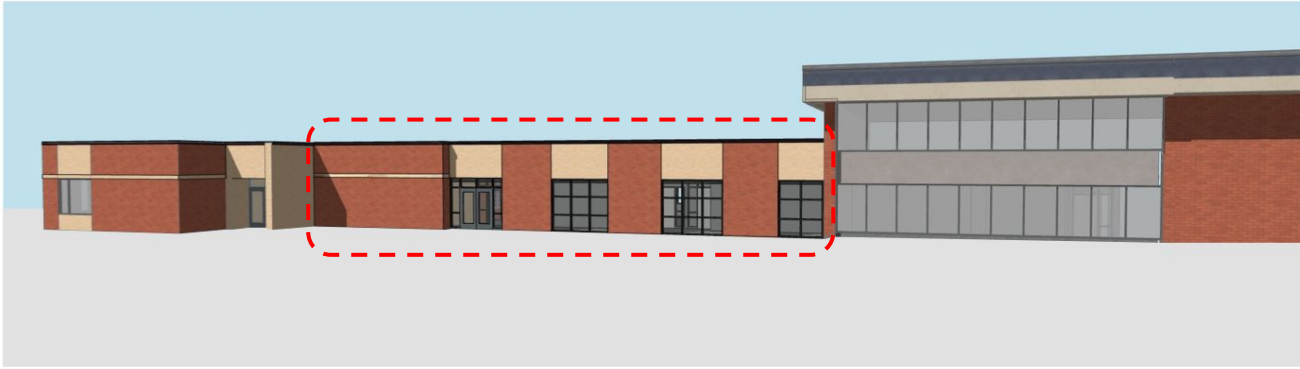
- Currently **101** parking spaces onsite
- Village Requirement is **100** parking spaces onsite
- Main parking lot size and queueing space improved in 2018 with renovation.





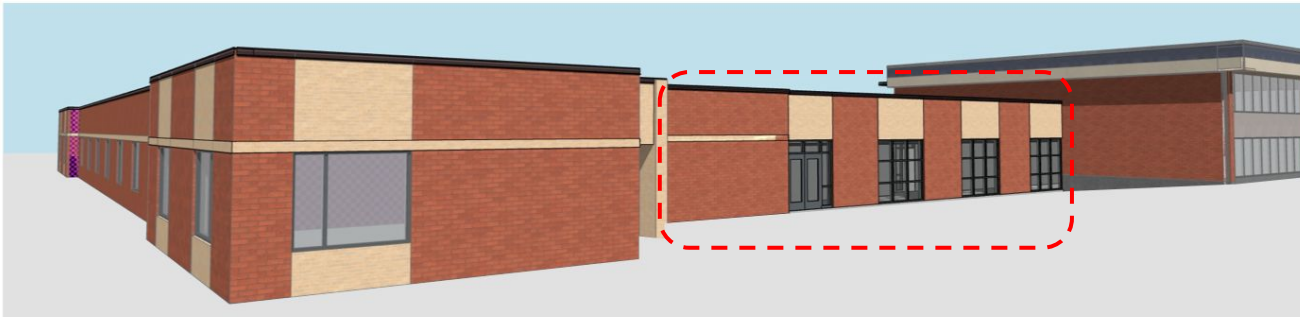
Windsor Elementary School

1315 E. Miner Street | Arlington Heights, IL 60005



VIEW

Preliminary Renderings Subject to Change



VIEW



Next Steps

- VAH Staff, Committee and Trustee reviews
- Continued design development
- Project(s) out to bid in spring / summer of 2023
- Break ground Fall of 2023 or Spring of 2024
- Projects complete Fall 2024
 - Full Day Kindergarten begins Fall of 2024

