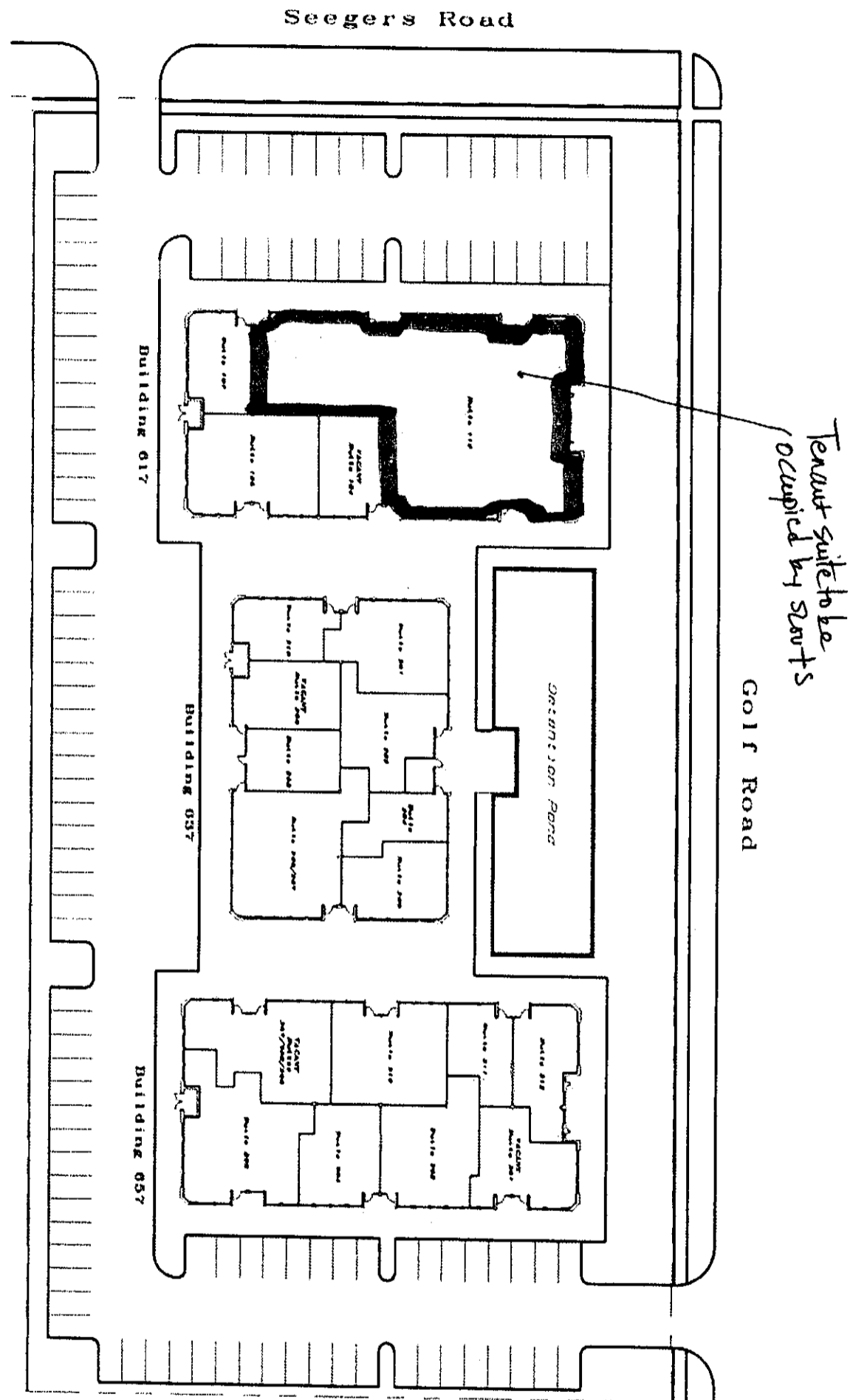


# OFFICE/MEDICAL SPACE FOR LEASE

SIGNATURE SQUARE SOUTH  
617-657 E. GOLF ROAD, ARLINGTON HEIGHTS, IL

## BUILDING SITE PLAN

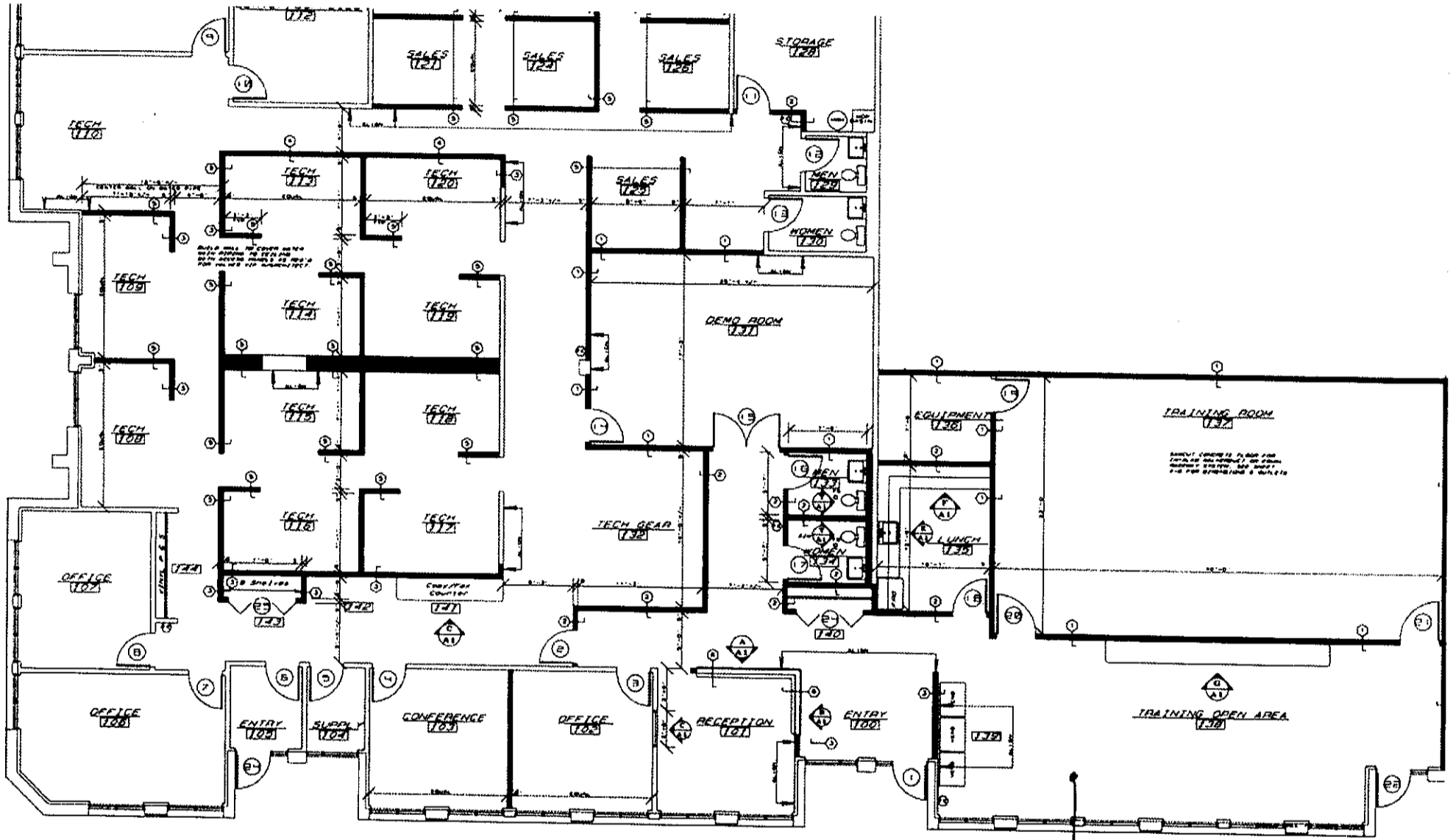


Brokers of Chicagoland Commercial, Inc. have a minority ownership interest in the property. Information contained herein has been obtained from the owners of the property or from other sources that we deem reliable. We have no reason to doubt its accuracy, but do not guarantee it.

# OFFICE/MEDICAL SPACE FOR LEASE

SIGNATURE SQUARE SOUTH  
617-657 E. GOLF ROAD, ARLINGTON HEIGHTS, IL

FLOOR PLAN - SUITE 101-103  
7,861 SF



FLOOR PLAN  
SCALE: 1/8" = 1'-0"



SCOTT SHOP AREA  
(HIGHLIGHTED IN YELLOW)

Brokers of Chicagoland Commercial, Inc. have a minority ownership interest in the property. Information contained herein has been obtained from the owners of the property and has no reason to doubt its accuracy, but do not guarantee it.