

Site Plan -

Est. 1945

WALTER E. SMITHE

Furniture & Design

1775 W Rand Road
Arlington Heights, IL 60004

drawn by
PAMELA F

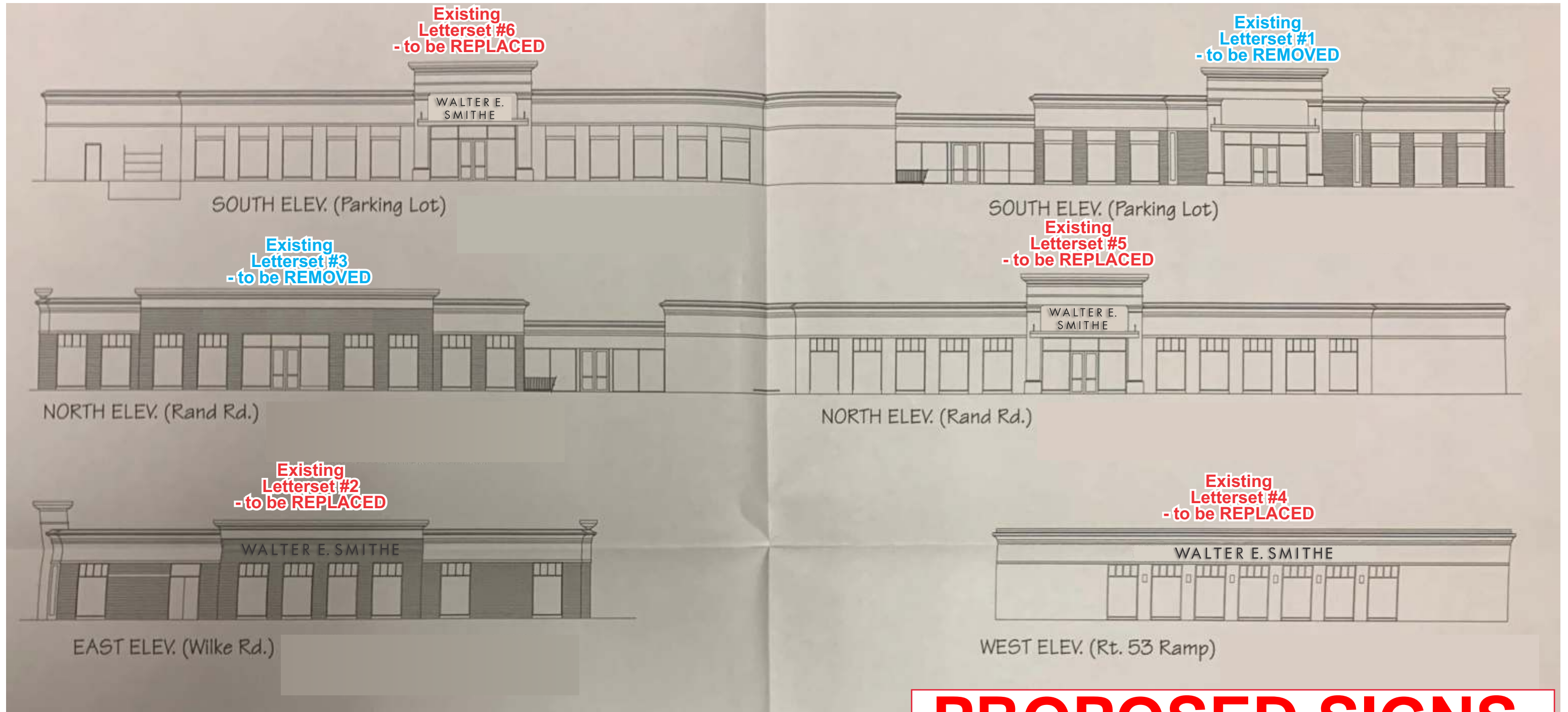
• job#: 22-9063
• 03-22-22
• rev.# 05-24-23

Comments:

OLYMPIK
SIGNS

1130 N. Garfield
Lombard, IL 60148 Ph.# 630.424.6100 Fx.# 630.424.6120 WWW.OLYSIGNS.COM

THIS IS AN ORIGINAL, UNPUBLISHED DRAWING SUBMITTED IN CONNECTION WITH A PROJECT WE ARE PLANNING FOR YOU. THIS IS NOT TO BE COPIED, REPRODUCED, EXHIBITED OR SHOWN TO ANYONE OUTSIDE OF YOUR ORGANIZATION WITHOUT THE WRITTEN PERMISSION OF OLYMPIK SIGNS, INC. ARTWORK IS EXCLUSIVE PROPERTY OF OLYMPIK SIGN INC.



PROPOSED SIGNS

Proposed Building Elevations -

— Est. 1945 —
WALTER E. SMITHE
 Furniture & Design

1775 W Rand Road
 Arlington Heights, IL 60004

drawn by
 PAMELA F

- job#: 22-9063
- 03-22-22
- rev.# 05-24-23

Comments:

EXISTING ELEVATIONS



1130 N. Garfield
 Lombard, IL 60148 Ph.# **630.424.6100** Fx.# 630.424.6120 WWW.OLYSIGNS.COM

THIS IS AN ORIGINAL, UNPUBLISHED DRAWING SUBMITTED IN CONNECTION WITH A PROJECT WE ARE PLANNING FOR YOU. THIS IS NOT TO BE COPIED, REPRODUCED, EXHIBITED OR SHOWN TO ANYONE OUTSIDE OF YOUR ORGANIZATION WITHOUT THE WRITTEN PERMISSION OF OLYMPIK SIGNS, INC. ARTWORK IS EXCLUSIVE PROPERTY OF OLYMPIK SIGN INC.



Northwest Elevation - Sign#4 - Before
Existing Square Footage 126.5



Northwest Elevation - Sign#4 - AFTER



Northwest Elevation - Sign#5 - Before
Existing Square Footage 51.0



Northwest Elevation - Sign#5 - AFTER



Northeast Elevation - Sign#3 - Before
Existing Square Footage 88.0



Northeast Elevation - Sign#3 - AFTER



Southwest Elevation - Sign#6 - Before
Existing Square Footage 46.5



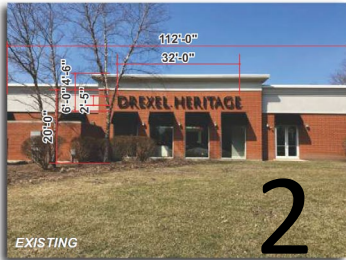
Southwest Elevation - Sign#6 - AFTER



Southwest Elevation - Sign#1 - Before
Existing Square Footage 48.0



Southwest Elevation - Sign#1 - AFTER



Southeast Elevation - Sign#2 - Before
Existing Square Footage 88.0



Southeast Elevation - Sign#2 - AFTER





Southwest Elevation - Sign#1 - Before

Existing Square Footage 48.0



Southwest Elevation - Sign#1 - AFTER

REMOVE Existing Channel Letterset -

Scale 1/4" = 1'-0"

Remove existing letterset, disconnect electrical, patch, repair and paint entire wall area restoring wall back to it's original condition. Paint color to be determined.

Est. 1945

WALTER E. SMITHE

Furniture & Design

1775 W Rand Road
Arlington Heights, IL 60004

drawn by
PAMELA F

- job#: 22-9063
- 03-22-22
- rev.# 05-24-23

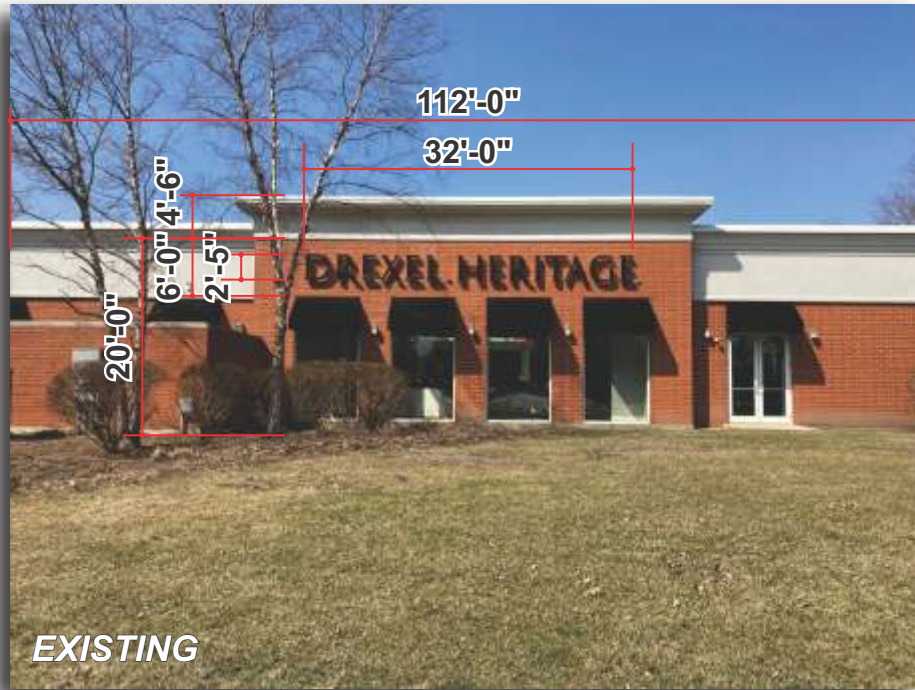
**OLYMPIK
SIGNS**

1130 N. Garfield
Lombard, IL 60148 Ph.# 630.424.6100 Fx.# 630.424.6120 WWW.OLYSIGNS.COM

THIS IS AN ORIGINAL, UNPUBLISHED DRAWING SUBMITTED IN CONNECTION WITH A PROJECT WE ARE PLANNING FOR YOU. THIS IS NOT TO BE COPIED, REPRODUCED, EXHIBITED OR SHOWN TO ANYONE OUTSIDE OF YOUR ORGANIZATION WITHOUT THE WRITTEN PERMISSION OF OLYMPIK SIGNS, INC. ARTWORK IS EXCLUSIVE PROPERTY OF OLYMPIK SIGN INC.

Comments:

SIGN TO BE REMOVED



EXISTING

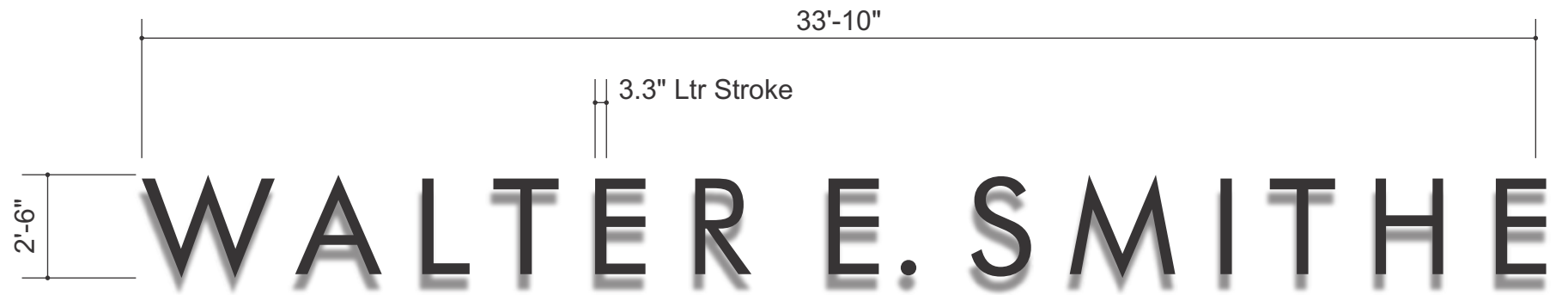
Southeast Elevation - Sign#2 - Before

Existing Square Footage 88.0



PROPOSED - DAY

Southeast Elevation - Sign#2 - AFTER



Front View

Halo-Lit Channel Letterset -

Scale 1/4" = 1'-0"

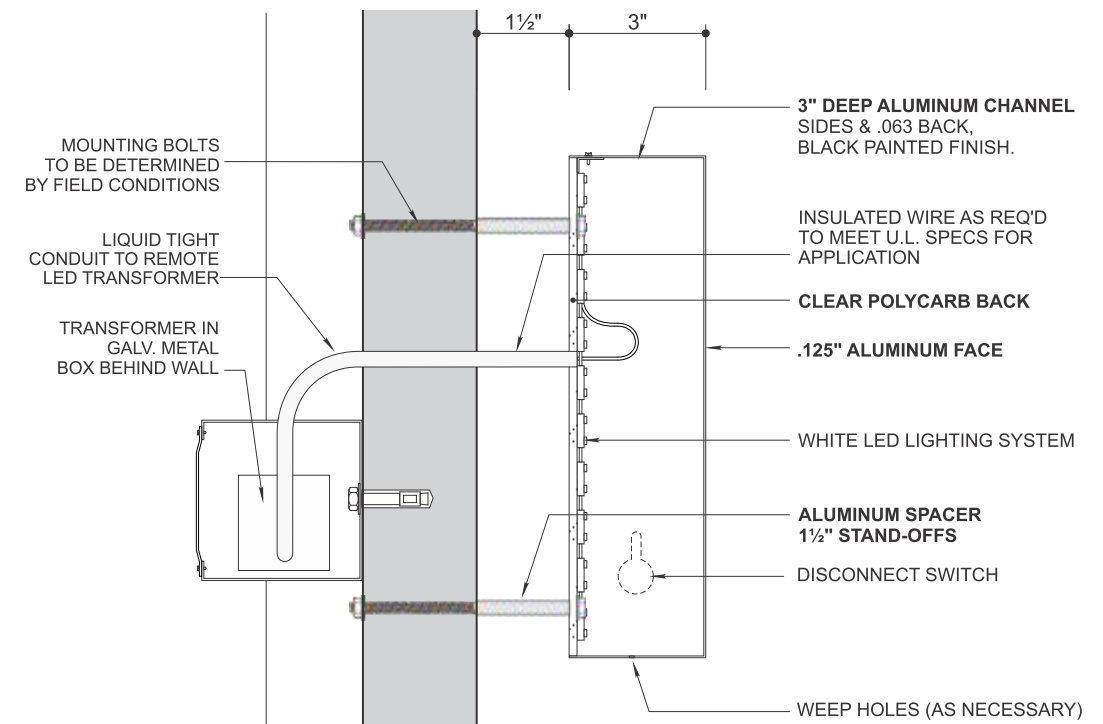
Qty: (1) Required

Square Footage: 84.5

3" deep aluminum channel Halo-Lit letterset with 1-1/2" stand-offs. Face and returns painted Black. Sign to illuminate with White LED Modules. *Drawing for concept purpose only.*



PROPOSED - NIGHT



Section A -

Scale N.T.S.

Stand-Off mounted internally illuminated letterset. Remote electrical.

Est. 1945
WALTER E. SMITHE

Furniture & Design

1775 W Rand Road
Arlington Heights, IL 60004

drawn by
PAMELA F

• job#: 22-9063
• 03-22-22
• rev.# 05-24-23

OLYMPIK
SIGNS

1130 N. Garfield
Lombard, IL 60148 Ph.# 630.424.6100 Fx.# 630.424.6120 WWW.OLYSIGNS.COM

THIS IS AN ORIGINAL, UNPUBLISHED DRAWING SUBMITTED IN CONNECTION WITH A PROJECT WE ARE PLANNING FOR YOU. THIS IS NOT TO BE COPIED, REPRODUCED, EXHIBITED OR SHOWN TO ANYONE OUTSIDE OF YOUR ORGANIZATION WITHOUT THE WRITTEN PERMISSION OF OLYMPIK SIGNS, INC. ARTWORK IS EXCLUSIVE PROPERTY OF OLYMPIK SIGN INC.

Comments:

SIGN LAYOUT



Northeast Elevation - Sign#3 - Before

Existing Square Footage 88.0



Northeast Elevation - Sign#3 - AFTER

REMOVE Existing Channel Letterset -

Scale 1/4" = 1'-0"

Remove existing letterset, disconnect electrical, patch, repair and paint entire wall area restoring wall back to it's original condition. Paint color to be determined.

Est. 1945

WALTER E. SMITHE

Furniture & Design

1775 W Rand Road
Arlington Heights, IL 60004

drawn by
PAMELA F

- job#: 22-9063
- 03-22-22
- rev.# 05-24-23

**OLYMPIK
SIGNS**

1130 N. Garfield
Lombard, IL 60148 Ph.# 630.424.6100 Fx.# 630.424.6120 WWW.OLYSIGNS.COM

THIS IS AN ORIGINAL, UNPUBLISHED DRAWING SUBMITTED IN CONNECTION WITH A PROJECT WE ARE PLANNING FOR YOU. THIS IS NOT TO BE COPIED, REPRODUCED, EXHIBITED OR SHOWN TO ANYONE OUTSIDE OF YOUR ORGANIZATION WITHOUT THE WRITTEN PERMISSION OF OLYMPIK SIGNS, INC. ARTWORK IS EXCLUSIVE PROPERTY OF OLYMPIK SIGN INC.

Comments:

SIGN TO BE REMOVED

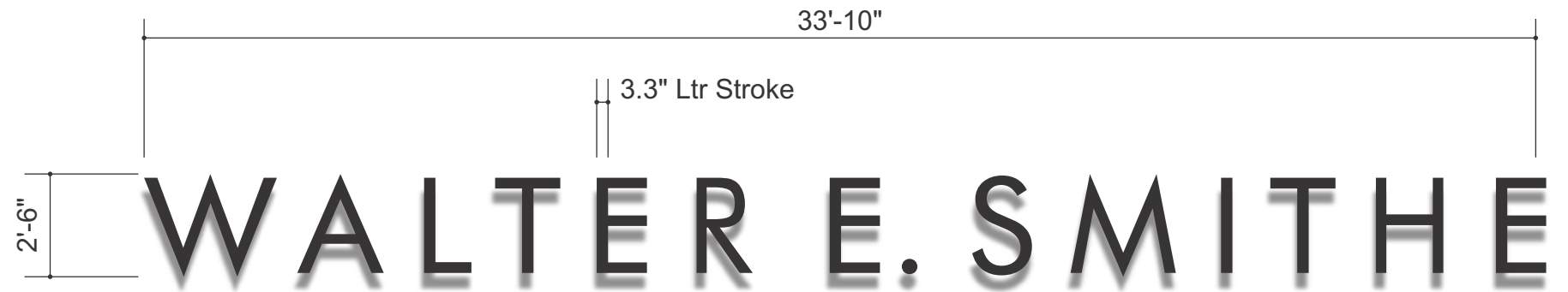


Northwest Elevation - Sign#4 - Before

Existing Square Footage 126.5



Northwest Elevation - Sign#4 - AFTER



Front View

Halo-Lit Channel Letterset -

Scale 1/4" = 1'-0"

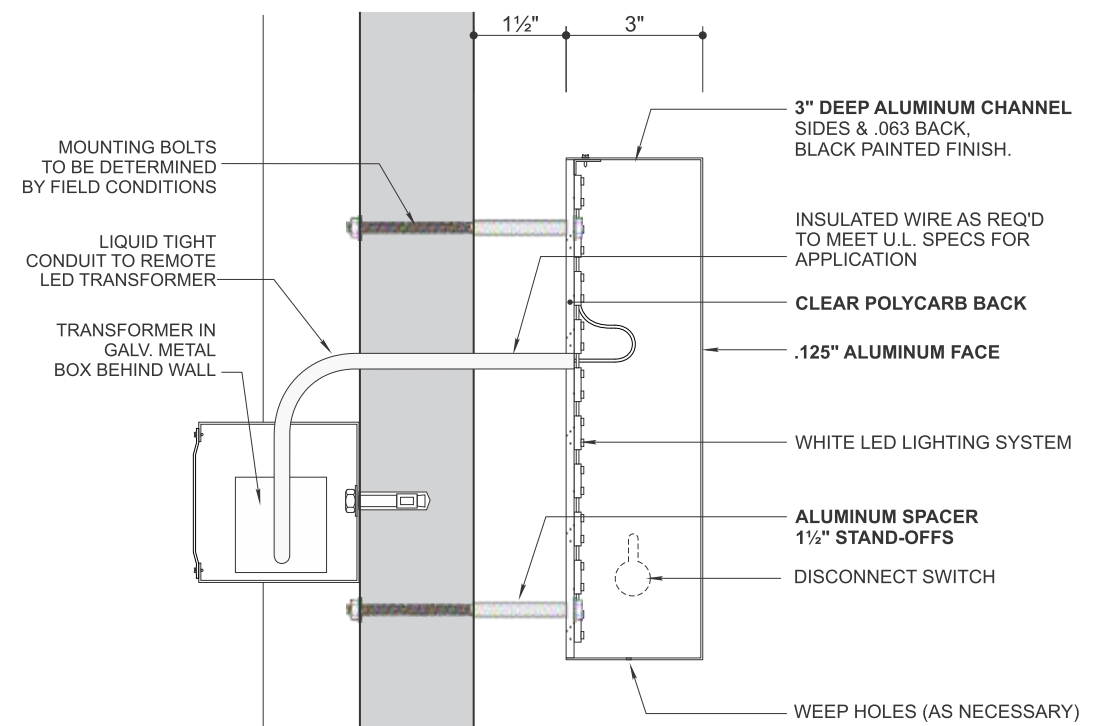
Qty: (1) Required

Square Footage: 84.5

3" deep aluminum channel Halo-Lit letterset with 1-1/2" stand-offs. Face and returns painted Black. Sign to illuminate with White LED Modules. *Drawing for concept purpose only.*



PROPOSED - NIGHT



Section A -

Scale N.T.S.

Stand-Off mounted internally illuminated letterset. Remote electrical.

Est. 1945
WALTER E. SMITHE
 Furniture & Design

1775 W Rand Road
 Arlington Heights, IL 60004

drawn by
 PAMELA F

• job#: 22-9063
 • 03-22-22
 • rev.# 05-24-23

OLYMPIK
SIGNS

1130 N. Garfield
 Lombard, IL 60148 Ph.# 630.424.6100 Fx.# 630.424.6120 WWW.OLYSIGNS.COM

THIS IS AN ORIGINAL, UNPUBLISHED DRAWING SUBMITTED IN CONNECTION WITH A PROJECT WE ARE PLANNING FOR YOU. THIS IS NOT TO BE COPIED, REPRODUCED, EXHIBITED OR SHOWN TO ANYONE OUTSIDE OF YOUR ORGANIZATION WITHOUT THE WRITTEN PERMISSION OF OLYMPIK SIGNS, INC. ARTWORK IS EXCLUSIVE PROPERTY OF OLYMPIK SIGN INC.

Comments:

SIGN LAYOUT



EXISTING

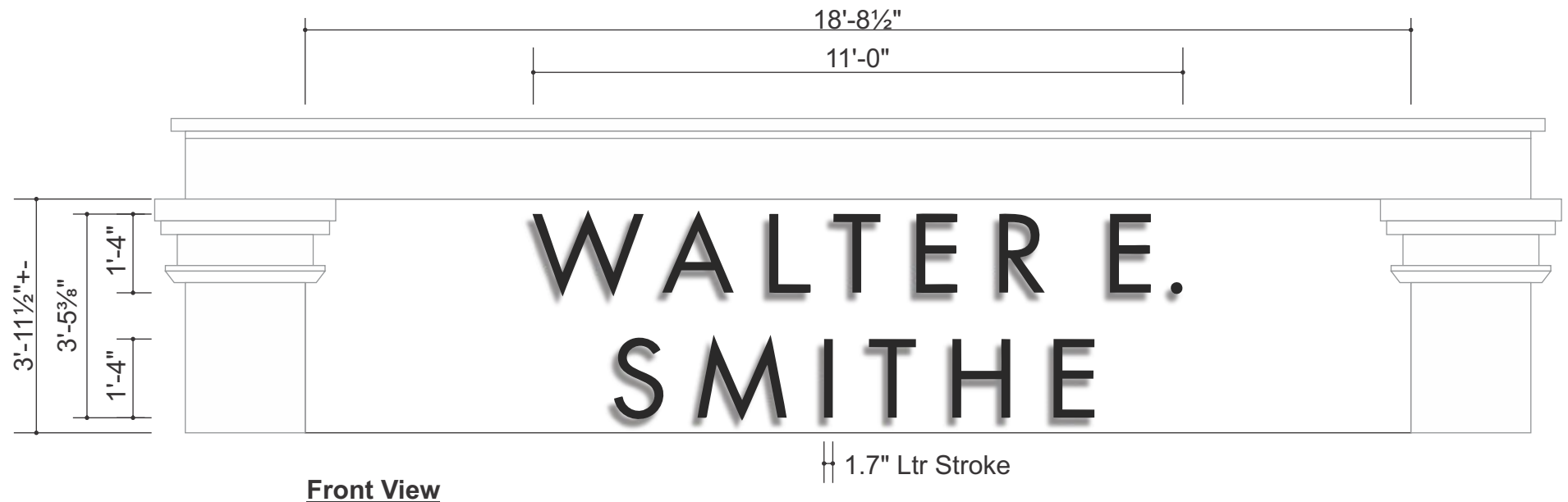
Northwest Elevation - Sign#5 - Before

Existing Square Footage 51.0



PROPOSED

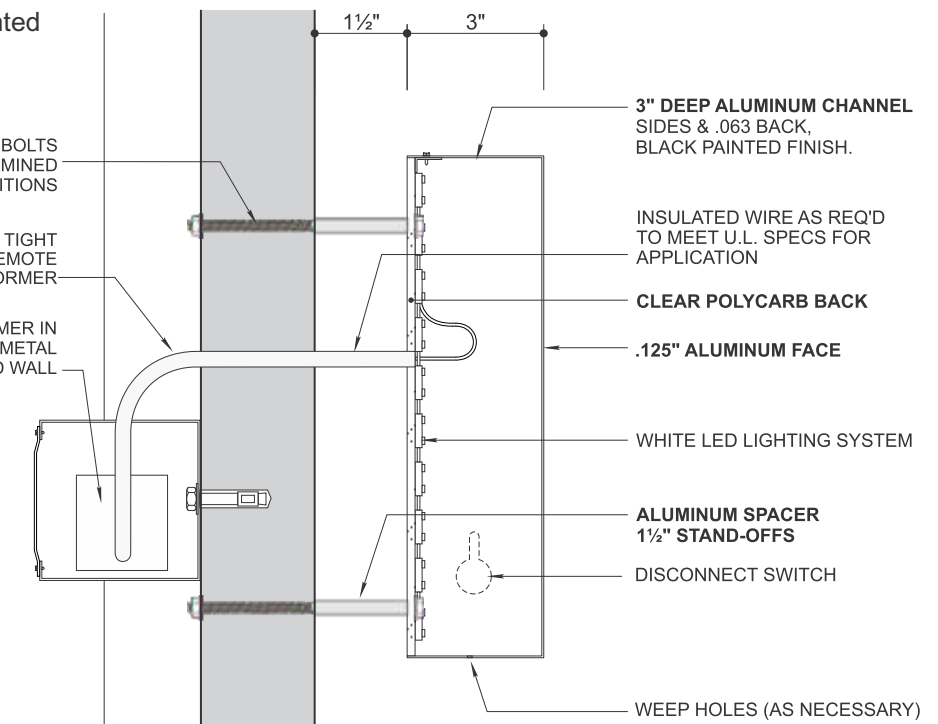
Northwest Elevation - Sign#5 - AFTER



Front View

Halo-Lit Channel Letterset -

Scale 3/8" = 1'-0" | Qty: (1) Required | Square Footage: 37.9
 3" Deep Aluminum channel Halo-Lit letterset with 1-1/2" stand-offs. Face and returns painted Black. Sign to illuminate with White LED Modules. *Drawing for concept purpose only.*



Section A -

Scale N.T.S.
 Stand-Off mounted internally illuminated letterset.
 Remote electrical.

Est. 1945
WALTER E. SMITHE
 Furniture & Design

1775 W Rand Road
 Arlington Heights, IL 60004

drawn by
 PAMELA F

• job#: 22-9063
 • 03-22-22
 • rev.# 05-24-23

OLYMPIK
SIGNS

1130 N. Garfield
 Lombard, IL 60148 Ph.# 630.424.6100 Fx.# 630.424.6120 WWW.OLYSIGNS.COM

THIS IS AN ORIGINAL, UNPUBLISHED DRAWING SUBMITTED IN CONNECTION WITH A PROJECT WE ARE PLANNING FOR YOU. THIS IS NOT TO BE COPIED, REPRODUCED, EXHIBITED OR SHOWN TO ANYONE OUTSIDE OF YOUR ORGANIZATION WITHOUT THE WRITTEN PERMISSION OF OLYMPIK SIGNS, INC. ARTWORK IS EXCLUSIVE PROPERTY OF OLYMPIK SIGN INC.

Comments:

SIGN LAYOUT

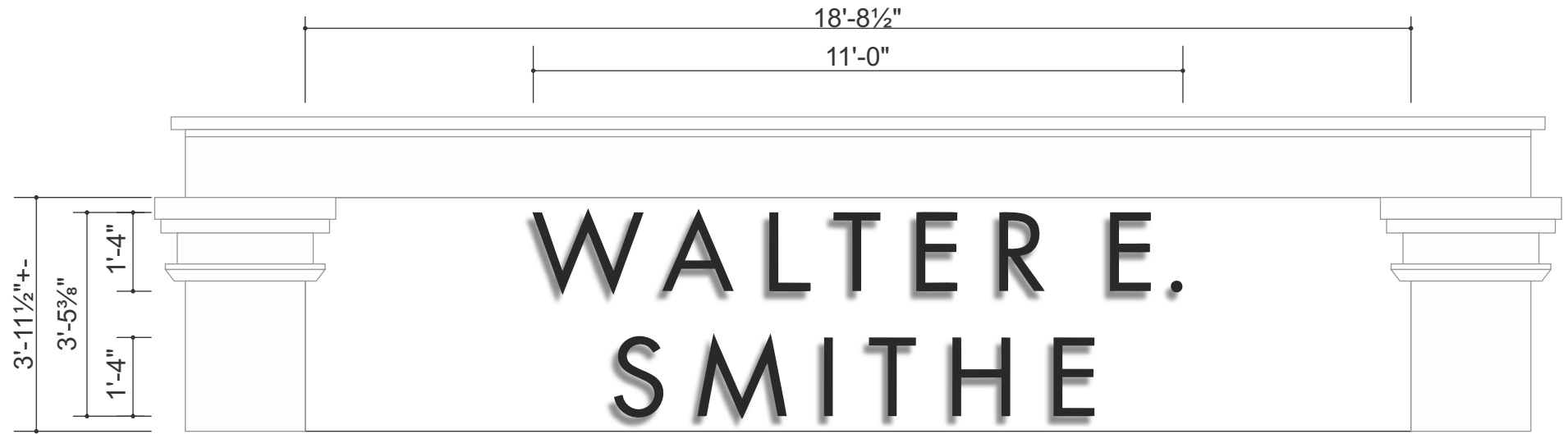


Southwest Elevation - Sign#6 - Before

Existing Square Footage 46.5



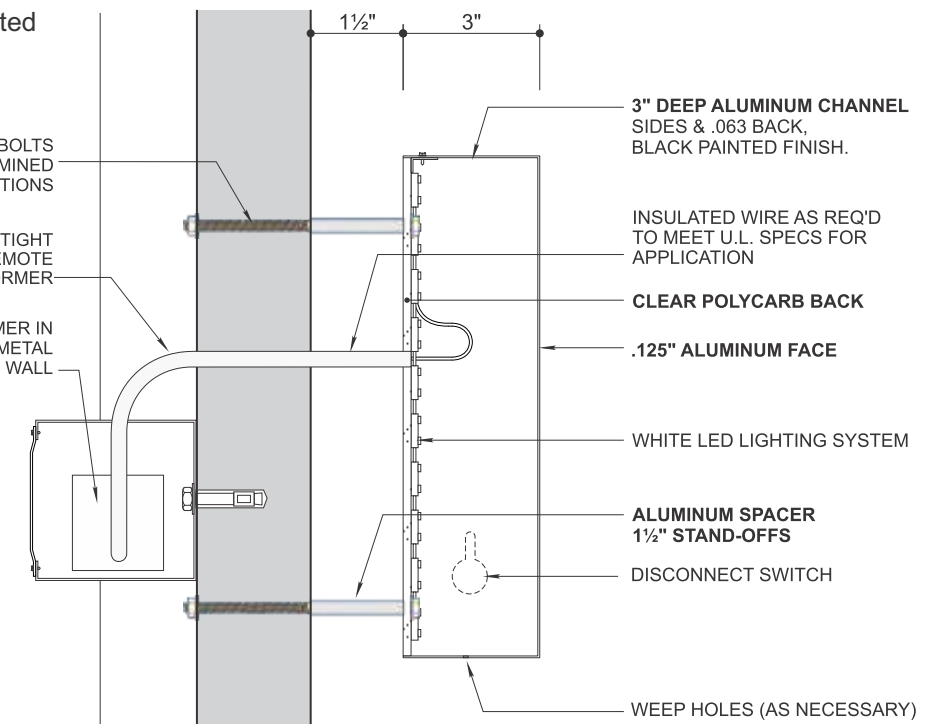
Southwest Elevation - Sign#6 - AFTER



Front View

Halo-Lit Channel Letterset -

Scale 3/8" = 1'-0" | Qty: (1) Required | Square Footage: 37.9
 3" Deep Aluminum channel Halo-Lit letterset with 1-1/2" stand-offs. Face and returns painted Black. Sign to illuminate with White LED Modules. *Drawing for concept purpose only.*



Section A -

Scale N.T.S.
 Stand-Off mounted internally illuminated letterset.
 Remote electrical.

Est. 1945
WALTER E. SMITHE
 Furniture & Design

1775 W Rand Road
 Arlington Heights, IL 60004

drawn by
 PAMELA F

• job#: 22-9063
 • 03-22-22
 • rev.# 05-24-23

OLYMPIK
SIGNS

1130 N. Garfield
 Lombard, IL 60148 Ph.# 630.424.6100 Fx.# 630.424.6120 WWW.OLYSIGNS.COM

THIS IS AN ORIGINAL, UNPUBLISHED DRAWING SUBMITTED IN CONNECTION WITH A PROJECT WE ARE PLANNING FOR YOU. THIS IS NOT TO BE COPIED, REPRODUCED, EXHIBITED OR SHOWN TO ANYONE OUTSIDE OF YOUR ORGANIZATION WITHOUT THE WRITTEN PERMISSION OF OLYMPIK SIGNS, INC. ARTWORK IS EXCLUSIVE PROPERTY OF OLYMPIK SIGN INC.

Comments:

SIGN LAYOUT