

Portillo's®

HOT DOGS · BEEF · BURGERS · SALADS

**806 W Dundee Road
Arlington Heights, IL 60004**

**Pre-Sell Menu Board
Main Menu Board**

**OLYMPIK
SIGNS**

1130 N. Garfield
Lombard, IL 60148 Ph.# **630.424.6100** Fx.# 630.424.6120 **WWW.OLYSIGNS.COM**

job#: 22-9311

● 11-03-22

SECTION 30-902 Standards (Arlington Heights)

A. The particular difficulty or peculiar hardship is not self-created by the petitioner.

Response:

New style menu boards and pre-sell menu boards are all digital and no longer consist of manually changeable copy.

Portillo's is updating the menu format throughout all locations so that Corporate could remotely control items and pricing across the country.

Per code section 30-208 (d) (2), Digital order screens shall not exceed two (2) square feet in size.

B. The granting of the variation shall not create a traffic hazard, a depreciation of nearby property values or otherwise be detrimental to the public health, safety, morals, and welfare.

Response:

In no way will the new menu board create any traffic hazard, depreciation of nearby property values or otherwise detrimental to the public health, safety, morals, and welfare.

The proposed menu board and pre-sell menu board although digital, will not have any flashing, blinking or other animations.

The proposed Samsung Drive-thru display has auto-dimming capability to control screen brightness based on ambient light.

C. The variation will serve to relieve the applicant from a difficulty attributable to the location, topography, circumstances on nearby properties or other peculiar hardship; and not merely serve to provide the application with a competitive advantage over similar businesses.

Response:

The variation will allow Portillo's to add the Arlington Heights location to their internal network of stores throughout the country which would allow them the same benefits as McDonalds, Starbucks, and other establishments with the same or similar boards in Arlington Heights.

D. The variation will not later the essential character of the locality.

Response:

The proposed digital menu board, if allowed, is no larger than the existing menu board. The pre-sell menu board is a third of the size of the proposed main menu board and is strategically located to alleviate traffic build-up.

E. The applicant's business cannot reasonably function under the standards of this Chapter.

Response:

Without this menu board, Portillo's would be unable to control items and pricing displayed from their corporate headquarters otherwise requiring a staff member to physically update the menu's.



Portillo's Hot Dogs, LLC • 2001 Spring Road, Suite 400, Oak Brook, IL 60523-3930 • (630) 954-3773 • Fax (630) 954-5851 • www.portillos.com

June 1, 2023

Village of Arlington Heights
33 S. Arlington Heights Rd.
Arlington Heights, IL 60005
Attention: Steve Hautzinger

RE: Portillo's Hot Dogs, LLC located at 806 W. Dundee Rd., Arlington Heights, IL
Drive-thru sign variation

Dear Mr. Hautzinger:

This letter is written in support of our request for a sign variation in our drive-thru at our restaurant located at 806 W. Dundee Road, Arlington Heights, IL. As part of our process, we have reviewed Section 30-705(h) of the Arlington Heights Municipal Code. This letter shall constitute our written acknowledgement that our sign use will comply with the operational standards set forth in Section 30-705(h).

Thank you for your consideration.

Very truly yours,

A handwritten signature in black ink, appearing to read "Susan B. Shelton".

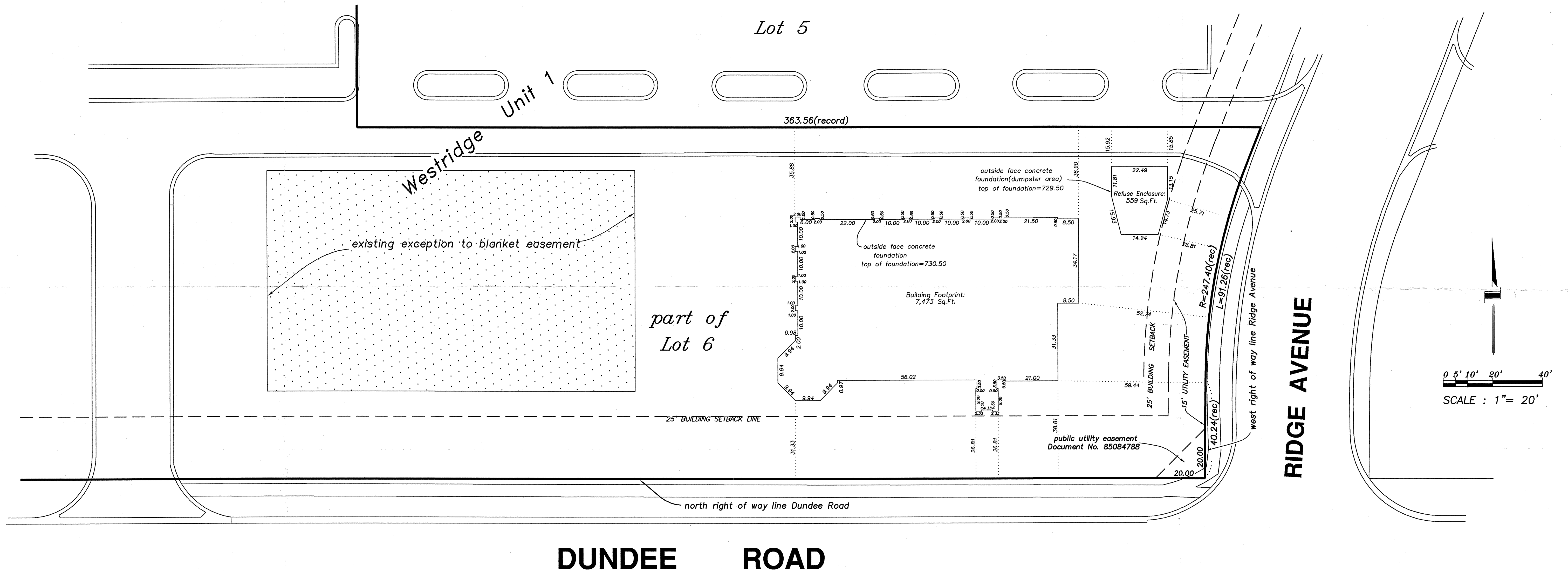
Susan B. Shelton
General Counsel
Portillo's Hot Dogs, LLC

Plat of Survey

of

Part of Lot 6 in Westridge Unit No. 1 being a subdivision of part of the south east 1/4 of Section 6,
Township 42 North, Range 11, East of the 3rd Principal Meridian, in Cook County, Illinois.

all dimensions hereon shown unless it is otherwise noted are given in feet and decimal parts thereof



State of Illinois }
County of Cook } ss.

I, David R. Bycroft, an Illinois Professional Land Surveyor, do hereby certify that I have surveyed the property described in the caption of this plat for the purpose of locating the recently built foundation wall and that this plat is a correct representation of said survey.

dated at Arlington Heights, Illinois, this 3rd day of April, 2006

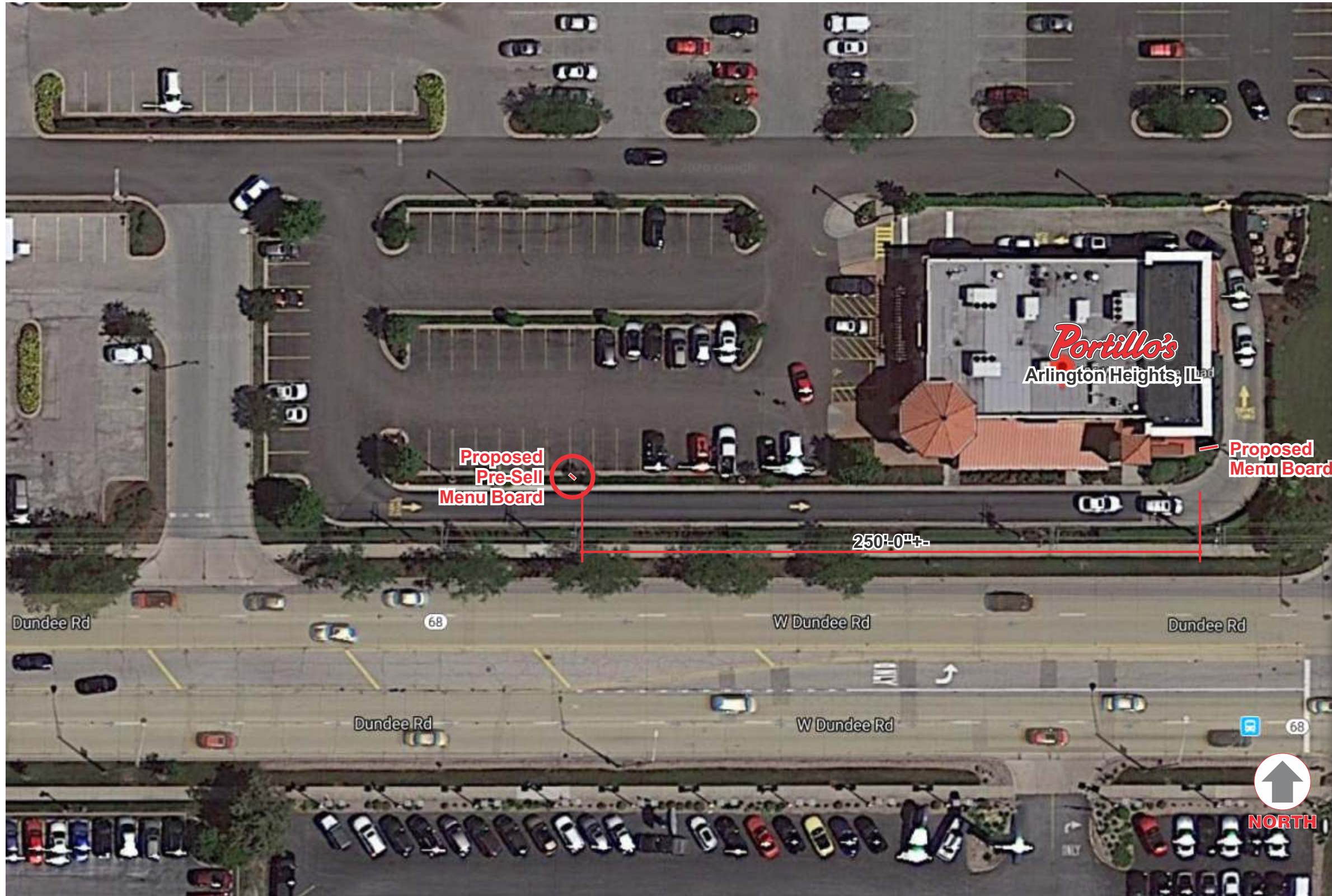
by *DBR*
as Illinois Professional Land Surveyor No. 2846

Building footprint area calculated and added to plat 6th day of July, 2006

FILE NO. 05-4859

for:
The Portillo Restaurant Group
2001 Spring Road
Oak Brook, Illinois

from the office of:
David Bycroft, Land Surveyor
2340 South Arlington Heights Road
Suite 620
Arlington Heights, Illinois
847-439-8225



Ariel Site Plan -

Portillo's
HOT DOGS · BEEF · BURGERS · SALADS

806 W Dundee Road
Arlington Heights, IL 60004

**OLYMPIK
SIGNS**

account representative / client
ROB WHITEHEAD /
1130 N. Garfield
Lombard, IL 60148 Ph.# 630.424.6100 Fx.# 630.424.6120

drawn by
PAMELA F

• job#: 22-9311
• 10-20-22
• rev.# 11-03-22

WWW.OLYSIGNS.COM

Comments:

ARIEL SITE PLAN

Subject Property



Existing Drive-Through Menu Sign

Subject Property



Menu Board Location



Proposed Pre-Sell Sign Location

Views from Dundee Road

Surrounding Context



Across Dundee Road – Looking Southeast



Across Dundee Road – Looking Southwest

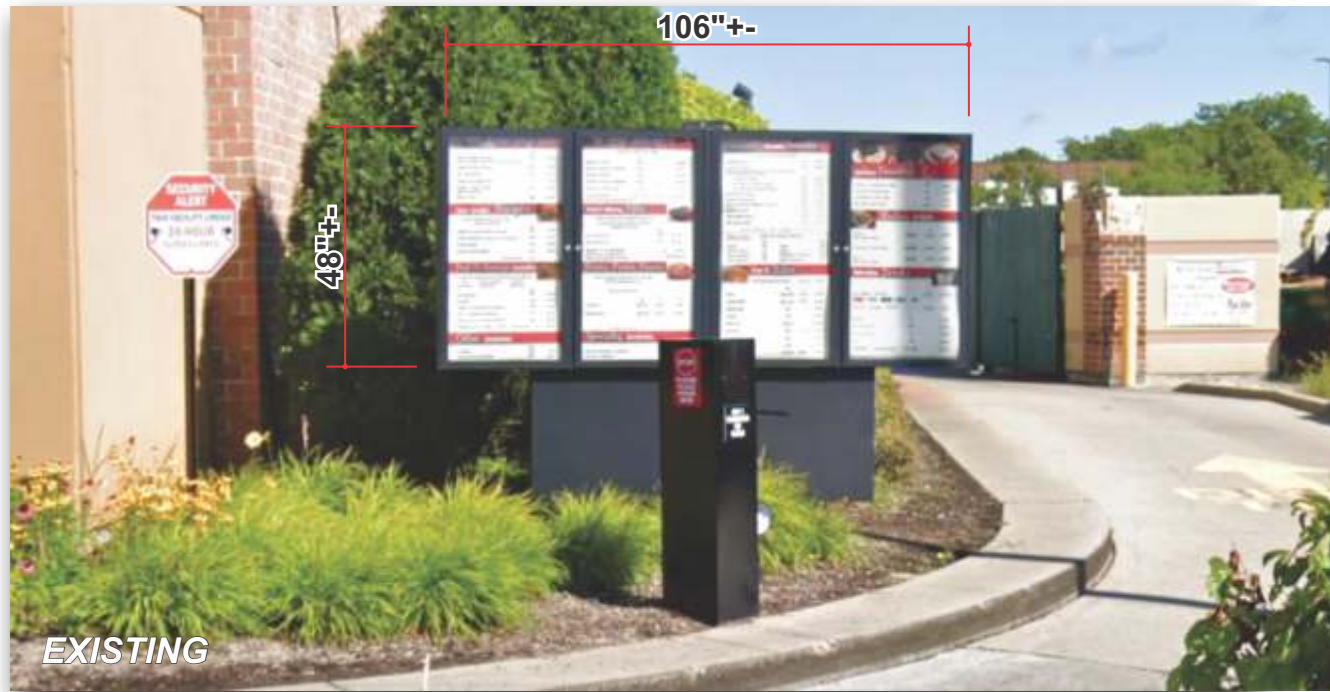
Surrounding Context



Across Ridge Avenue - Looking East

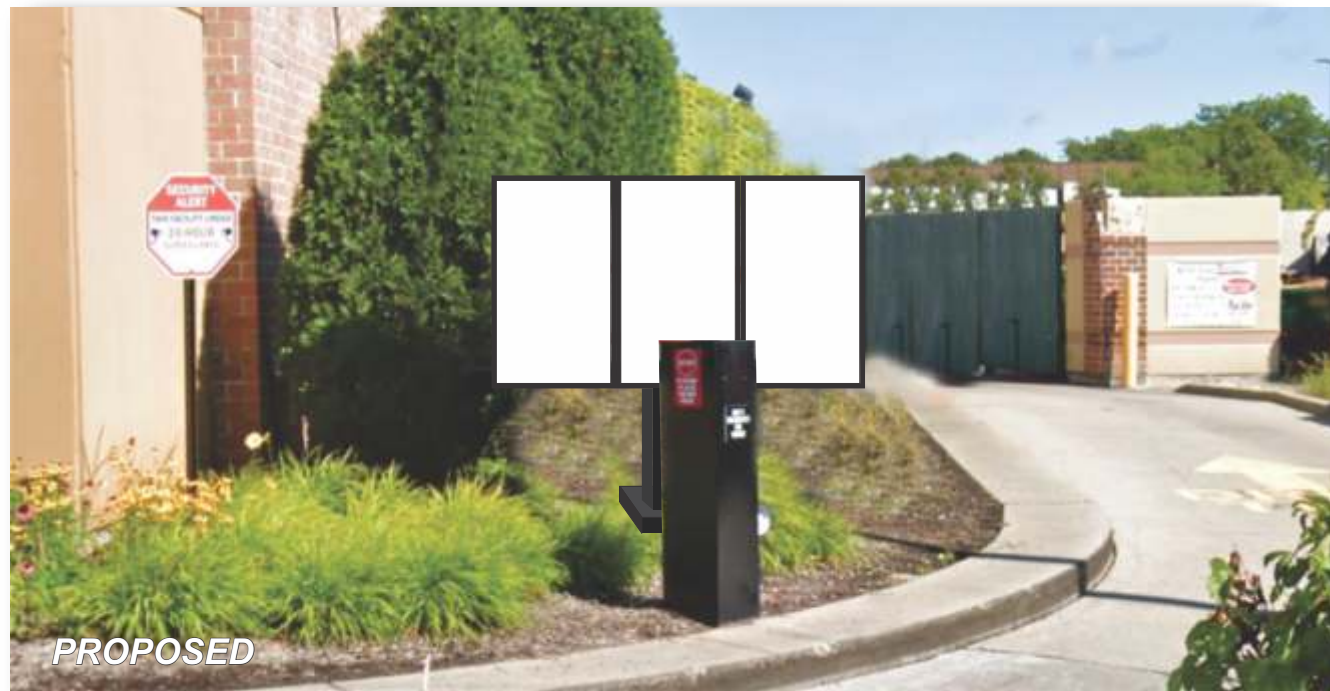


Ridge Plaza Shopping Center - Looking North



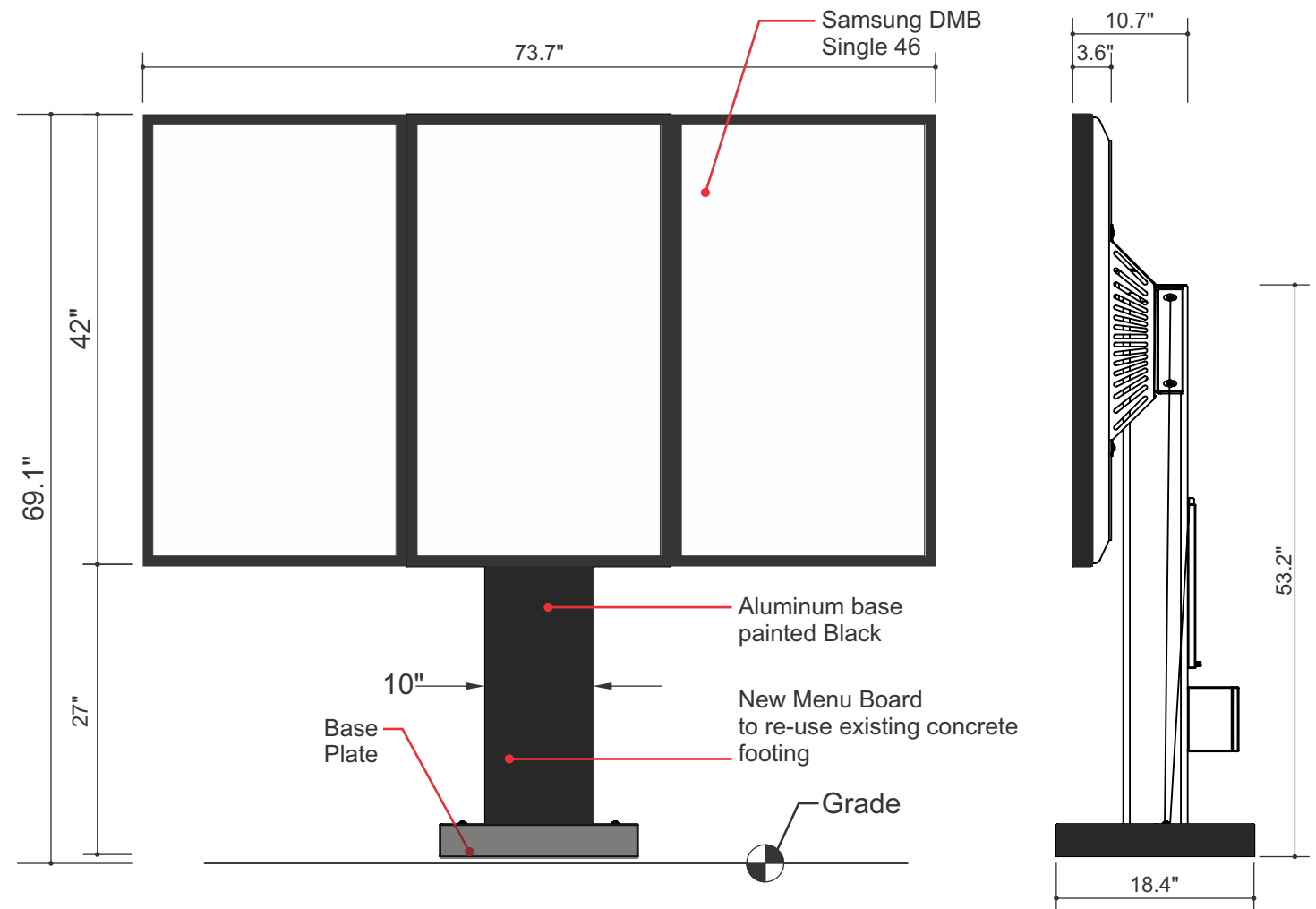
EXISTING

Drive-Thru Elevation - Before



PROPOSED

Drive-Thru Elevation - AFTER



DIGITAL Main Drive-Thru Menu Board -

Scale 3/4" = 1'-0"
Square Footage: 21.4

Portillo's

HOT DOGS · BEEF · BURGERS · SALADS

806 W Dundee Road
Arlington Heights, IL 60004

OLYMPIK
SIGNS

account representative / client
ROB WHITEHEAD /
1130 N. Garfield
Lombard, IL 60148 Ph.# 630.424.6100 Fx.# 630.424.6120

drawn by /
PAMELA F /
WWW.OLYSIGNS.COM

• job#: 22-9311
• 10-20-22
• rev.# 11-03-22

Comments:

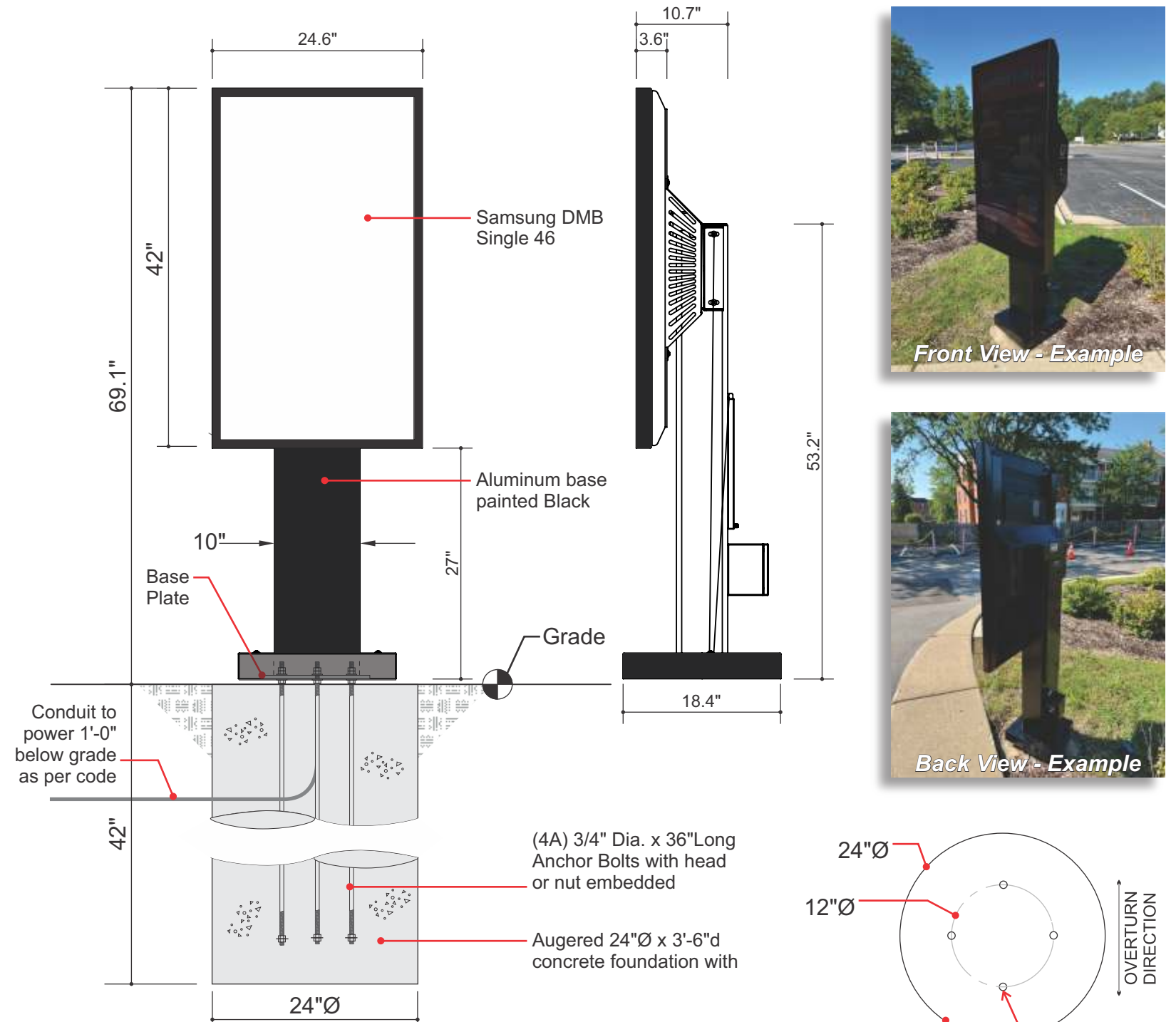
MAIN MENU



Drive-Thru Elevation - Before

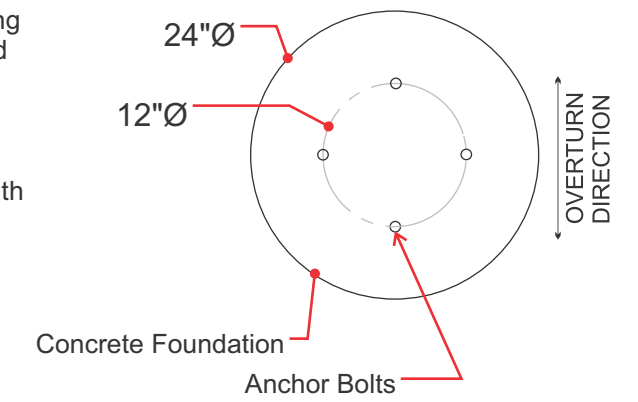


Drive-Thru Elevation - AFTER



DIGITAL Pre-Sell Drive-Thru Menu Board -

Scale 3/4" = 1'-0"
 Square Footage: 7.17



Foundation- Top View

Scale 3/4" = 1'-0"

OLYMPIK
SIGNS

account representative / client
 ROB WHITEHEAD /

Portillo's
 HOT DOGS · BEEF · BURGERS · SALADS
 806 W Dundee Road
 Arlington Heights, IL 60004

drawn by / job#: 22-9311
 PAMELA F / 10-20-22
 / rev.# 11-03-22

Comments:

PRE-SELL MENU

Example Menu Displays

Portillo's FAMOUS FIVE™
A convenient way to order our most famous items.

#1 BIG ITALIAN BEEF
With Fries+Drink
Add Sweet or Hot Peppers*
15.37 1420-1590 Cal

#2 TWO HOT DOGS
With Fries+Drink
13.46 1060-1230 Cal

#3 DOUBLE CHAR-BROILED CHEESEBURGER
With Fries+Drink
15.27 1370-1540 Cal

#4 SPICY CHICKEN SANDWICH
With Fries+Drink
12.47 900-1070 Cal

#5 ITALIAN BEEF & SAUSAGE SANDWICH
With Fries+Drink
Add Sweet or Hot Peppers*
14.37 1200-1370 Cal

CHEESE AND PEPPERS ARE AN ADDITIONAL COST.

Pre-Sell
Menu Display

BEEF & SAUSAGE		Chicago's #1 Italian Beef	Cal
Italian Beef Sandwich	Reg 7.69	690	
	BIG BEEF 9.89	1040	
Italian Sausage Sandwich	6.19	690	
Italian Beef & Sausage Sandwich	8.89	820	
Beef N' Cheddar Croissant	7.99	670	
HOT DOGS			
Portillo's Beef Hot Dog	Reg 3.99	340	
	JUMBO 4.99	450	
Plant-Based Garden Dog	4.29	320	
<small>A plant-based Chicago-Style hot dog with Mustard, Relish, Onion, Tomato, Celery Salt, Pickle and Sport Peppers</small>			
Chili Cheese Dog	Reg 5.19	500	
	JUMBO 6.19	610	
Maxwell Street Polish	6.19	570	
<small>Mustard and Grilled Onions</small>			
CHAR-BROILED BURGERS			
Hamburger	Single 5.89	570	
	DOUBLE 8.29	900	
Cheeseburger	Single 6.59	660	
	DOUBLE 9.79	990	
Bacon Burger	Single 7.29	700	
	DOUBLE 9.69	980	
Bacon Cheeseburger	Single 7.99	760	
	DOUBLE 10.99	1040	
NEW! Rodeo Burger	Single 8.39	790	
	DOUBLE 11.39	1160	
<small>Bacon, BBQ Sauce, Onion Rings, Red Onion, and American Cheese</small>			
CHICKEN & FISH			
Broiled Chicken Sandwich	6.59	400	
<small>Mayo, Lettuce and Tomato on Brioche Bun</small>			
Breaded Chicken Sandwich	6.59	600	
<small>Mayo, Lettuce and Tomato on Brioche Bun</small>			
Spicy Chicken Sandwich	6.99	520	
<small>Hot Giardiniera Sauce, Lettuce and Tomato on a Brioche Bun</small>			
Chicken Tenders	4pc 5.49	340	
	6pc 8.19	510	
<small>Sauces: BBQ, Honey Mustard, Ranch, Giardiniera Sauce (40-195 cal)</small>			
Breaded Whitefish Sandwich	6.99	710	
<small>Lettuce, American Cheese and Tartar Sauce</small>			

Cashless Drive Thru

We Accept

We Accept Cash Inside

FRIES & SIDES		Cal	DRINKS		Cal
Fries	Sm 2.99	380	Soft Drinks	Sm 2.49	0-170
	Lg 3.79	530		Lg 2.89	0-270
Cheese Sauce	Reg 0.99	135	Iced Tea	Sm 2.49	0
	JUMBO 4.49	540		Lg 2.89	0
Onion Rings	Sm 3.99	350	Milk	2.19	120
	Lg 4.89	520	Bottled Water	2.19	0
Giardiniera Sauce	0.89	90	San Pellegrino	2.89	0
Tamale	2.69	340	SHAKES		
Garden Salad	5.29	170	Shakes	Sm 3.89	500-540
Cup of Chicken	4.69	140		Lg 4.99	800-890
Noodle Soup			<small>Vanilla, Chocolate, Strawberry</small>		
Cup of Chili	4.59	420	MAKE IT A MALT	0.30	55-85
DESSERTS			Cake Shake	Sm 4.69	745-850
Portillo's Chocolate Cake	3.89	720		Lg 5.79	1295-1490
<small>Chocolate, Lemon</small>					
Strawberry Shortcake	4.79	480	Strawberry Lemon Cake Shake	Sm 5.19	760
Chocolate Éclair	4.79	520		Lg 6.29	1310
Lemon Cake	3.89	700	PORTILLO'S CLASSICS If you see a 2 next to an item, you know it's a crowd favorite!		
SALADS Served with Fresh-Baked Bread (240 cal)					
Chopped Salad					10.79 550
<small>Romano, Iceberg, Chicken, Red Cabbage, Dillini Pasta, Bacon, Tomato, Grapes, Green Onion; Best Served with House Dressing</small>					
Classic Caesar Salad					7.79 230
<small>Romano, Hard Boiled, Egg, Croutons and Parmesan; Best Served with Caesar Dressing</small>					
ADD GRILLED CHICKEN					3.00 130
Greek Salad					10.79 340
<small>Romaine, Grilled Chicken, Feta, Tomato, Red Onion, Kalamata Olives and Cucumber; Best Served with Greek Vinaigrette</small>					
PORTILLO'S BOWLS Chicago's #1 Italian Beef, Served in a Bowl					
Classic Bowl Italian Beef					7.59 440
Chicago Combo Bowl Italian Beef and Sausage					9.00 770

Main Menu
Display

SAMSUNG

OH Full Outdoor Signage

OH46B 46" | OH55A-S 55" | OH75A 75"

Stand out, outside. Night and day, rain or shine.

A sleek all-in-one display that's built for the outdoors.

Communicate clearly at all times. The Samsung OH Series outdoor solution features exceptional brightness and a slim yet rugged design. It'll get your message out 24/7, whether it's pouring rain at midnight or scorching sun at noon.



A true all-weather display

With certified IP56-rated protection, Samsung OH Series full outdoor signage is designed specifically to withstand the elements and fully perform in heat, cold, rain, snow and dust.¹



Humidity prevention

With hidden four fans in the downside of the signage, external humidity issues such as condensation are greatly reduced.



Attract attention anywhere, anytime

Samsung full outdoor signage is UL-verified for outdoor visibility, with peak brightness of up to 4,000 nits. Combined with a built-in auto brightness sensor, it'll deliver vivid content in all types of lighting, 24/7.



Bright, vivid, accurate communication

OH series signage delivers enhanced red, green and blue shades, for incredible color accuracy.



Outstanding visibility in direct sun

Samsung Magic Protection Glass features advanced anti-reflection technology, for exceptional visibility even in direct sunlight. And Samsung's circular polarizing technology means content can still be easily seen even while wearing polarized sunglasses.



Robust durability for screen safety

The Magic Protection Glass is tempered, with IK10-rated durability for advanced safety and protection against external impact and damage.² That helps protect against vandalism, and adds peace of mind.



Reliable and advanced software for effective management

The embedded MagicINFO Player S7, backed by the powerful TIZEN operating system, boosts overall performance and offers painless content management.³ Promotions and content throughout a network of signage can be easily changed. Transitions and playback are seamless, for a better experience for both customers and store managers.



Powerful, protective security

Powered by Samsung's proprietary Knox technology, the OH series employs comprehensive three-layer security protection. The secured platform helps minimize security attacks and supports application development.



3-year warranty

A 3-year warranty means extended protection and peace of mind.



samsung.com/display

OH Full Outdoor Signage

Model		OH46B	OH55A-S	OH75A	
Panel	Diagonal Size	46"	55"	75"	
	Class	Measured	54.6" / 138.7cm	74.5" / 189.2cm	
	Type		120Hz E-LED BLU	60Hz D-LED Local Dim. BLU	
	Resolution	1920 x 1080 (16:9)	1920 x 1080 (16:9)	3840 x 2160 (16:9)	
	Brightness (Typ.)	3,500 nit (Peak 4,000 nit)	3,500 nit (peak 4,000 nit)	3,500 nit (peak 4,000 nit)	
	Contrast Ratio	6000:1	6,000:1	1,200:1	
	Viewing Angle (H/V)	178/178	178/178	178/178	
	Color Gamut	72%	72%	72%	
Sound	Operation Hour	24/7	24/7	24/7	
	Speaker Type	N/A	N/A	N/A	
Connectivity	INPUT	Video	HDMI 2.0 (2), HDBaseT	HDMI 2.0 (2)	
		Video	HDMI 2.0 (2), HDBaseT	HDMI 2.0 (2)	
		Audio	N/A	N/A	
		USB	USB 2.0 x 1	USB (1)	
	OUTPUT	Video	N/A	N/A	
		Audio	Stereo Mini Jack	Stereo Mini Jack	
		Audio	N/A	N/A	
		USB	N/A	N/A	
	External Control	RS232C(in/out), RJ45 (in/out), HDBaseT	RS232C (in/out), RJ45(in/out), HDBaseT	RS232C (in), RJ45(in)	
	External Sensor	N/A	N/A	N/A	
Tuner	N/A	N/A	N/A		
Power	Type	Internal	Internal	Internal	
	Power Supply	AC 100 – 240 V, 50/60 Hz	AC 100 – 240 V, 50/60 Hz	AC 100 – 240 V, 50/60 Hz	
	Power Consumption	Max [W/h]	460	530	1,200
		Typical [W/h]	205W	274	471
		BTU (Max)	⌘ IEC 62087 measurement standard	⌘ IEC 62087 measurement standard	⌘ IEC 62087 measurement standard
Sleep mode		0.5	Less than 0.5W	Less than 0.5W	
Mechanical Spec	Off mode	N/A	N/A	N/A	
	Dimension (mm/in)	Set	1,069 x 623.6 x 85 mm / 42 x 24.5 x 3.3 in	1,280.6 x 731.4 x 85.0 mm / 49.6 x 28.7 x 3.3 in	1,774.8 x 1,053.4 x 130 mm / 69.8 x 41.4 x 5.1 in
		Package	1,156 x 713 x 200 mm / 45.5 x 28 x 7.8 in	1,358 x 845 x 230 mm / 53.4 x 33.2 x 9 in	1,932 x 1,251 x 367 mm / 76 x 49.2 x 14.4 in
	Weight (kg/lbs)	Set	36 kg / 79.3 lbs	46.1 kg / 101.6 lbs	134 kg / 295.4 lbs
		Package	40.5 kg / 89.2 lbs	52.6 kg / 115.9 lbs	150 kg / 330.6 lbs
	Mounting Hole	995 x 500	1186 x 560 (Basic)	870 x 1118.4 (M8 x 4Hole)	
Protection Glass	1000 x 400 (VESA Bracket Option)	1200 x 400 (VESA Bracket Option)	260 x 1118.4 (M8 x 4Hole)		
Operation	Bezel Width (mm)	M8, 9-11	Yes (5T Tempered Glass)	Yes (5T Tempered Glass)	
	Operating Temperature	24.9 mm	24.9 / 24.9 / 24.9 / 24.9 mm	59.8 / 59.8 / 59.8 / 59.8 mm	
	Humidity	-30°C - 50°C	-30°C - 50°C	-30°C - 50°C	
	IP Rating	10-100%	10-100% (Non-condensing)	10-80% (Non-condensing)	
Special	Key	Power-box Integrated, IP56 Outdoor, Built-in MagicInfo Player S7, SSSP 7.0	Power-box Integrated, IP56 Outdoor, Built-in MagicInfo Player S7, SSSP 7.0	Power-box Integrated, IP56 Outdoor, Built-in MagicInfo Player S7, SSSP 7.0	
	Orientation	IP56 Rated Simple Enclosure Outdoor, Protection Glass (IK-10 Level, Anti Graffiti, Infrared Reduce), Polarized Sun Glasses Viewable in any direction, HD Base T for Long Distance Installing, Auto Brightness Control with Ambient Brightness Sensor , Temperature Sensor, Clock Battery (80hrs Clock Keeping), Auto Source Switching & Recovery, RJ45 MDC, Kensington Lock	IP56 Rated Simple Enclosure Outdoor, Protection Glass (IK-10 Level, Anti Graffiti, Infrared Reduce), Polarized Sun Glasses Viewable in any direction, Portrait / Landscape Installation Support, Lamp Error Detection, Auto Brightness Control with Ambient Brightness Sensor, Temperature Sensor, RJ45 MDC, Auto Source Switching & Recovery, Clock Battery (80hrs Clock Keeping), Kensington Lock	IP56 Rated Simple Enclosure Outdoor, Protection Glass (IK-10 Level, Anti Graffiti, Infrared Reduce), Polarized Sun Glasses Viewable in any direction, Portrait / Landscape Installation Support, Auto Brightness Control with Ambient Brightness Sensor, Temperature Sensor, RJ45 MDC, Auto Source Switching & Recovery, Clock Battery (80hrs Clock Keeping)	
Feature	Processor	Cortex A72 1.7GHz Quad-Core CPU	Cortex A72 1.7GHz Quad-Core CPU	Cortex A721.7GHz Quad-Core CPU	
		On-Chip Cache Memory	L1 Instruction Cache: 48KB L1 Data Cache: 32KB L2 Cache: 2MB	L1 Instruction Cache: 48KB L1 Data Cache: 32KB L2 Cache: 2MB	L1 Instruction Cache: 48KB L1 Data Cache: 32KB L2 Cache: 2MB
		Clock Speed	1.7GHz	1.7GHz	1.7GHz
		Main Memory Interface	2.5GB LPDDR4 1.6GHz 64bit	2.5GB LPDDR4 1.5GHz 64bit	2.5GB LPDDR4 1.6GHz 64bit
	Internal Player (Embedded H/W)	Graphics	Graphic resolution: 1920 x 1080 Output resolution: up to 3840 x 2160 (Scale up from graphic processing result) – Supports OpenGL ES	Graphic resolution: 1920 x 1080 Output resolution: 1920 x 1080 – Supports OpenGL ES	Graphic resolution: 1920 x 1080 Output resolution: up to 3840 x 2160 (Scale up from graphic processing result) – Supports OpenGL ES
		Storage (FDM)	8GB (3.88GB Occupied by O/S, 4.12GB Available)	8GB (3.88GB Occupied by O/S, 4.12GB Available)	8GB (3.88GB Occupied by O/S, 4.12GB Available)
	Multimedia	Video Decoder	FHD MFD : VP8, H.264, AVS+(60Hz)UHD MFD : HEVC, H.264, VP95K HEVC Decoder, SHVC(ATSC3.0)AVS2.0 HEVC / AVS2.0 1xUHD120p (DP, NR off, FRC bypass)	FHD MFD : VP8, H.264, AVS+(60Hz)UHD MFD : HEVC, H.264, VP95K HEVC Decoder, SHVC(ATSC3.0)AVS2.0 HEVC / AVS2.0 1xUHD120p (DP, NR off, FRC bypass)	FHD MFD : VP8, H.264, AVS+(60Hz)UHD MFD : HEVC, H.264, VP95K HEVC Decoder, SHVC(ATSC3.0)AVS2.0 HEVC / AVS2.0 1xUHD120p (DP, NR off, FRC bypass)
		Audio Decoder	Audio Decoder – AC3 (DD), MPEG	Audio Decoder – AC3 (DD), MPEG	Audio Decoder – AC3 (DD), MPEG
		IO Ports	USB 2.0	USB 2.0	USB 2.0
		Operating System	Tizen 5.0 (VDLinux)	Tizen 5.0 (VDLinux)	Tizen 5.0 (VDLinux)
Certification	Safety	60950-1	60950-1	60950-1	
	EMC	Class A	Class A	Class A	
Accessories	Environment	N/A	N/A	N/A	
	Included	Quick Setup Guide, Regulatory Guide, Warranty Card, Power Cord, Remote Controller, Batteries	Quick Setup Guide, Regulatory Guide, Warranty Card, Power Cord, Remote Controller, Batteries	Quick Setup Guide, Regulatory Guide, Warranty Card, Power Cord, Remote Controller, Batteries	

Connectivity

- RS232C IN / Out
- Audio Out
- USB
- RJ45 (LAN Out)
- HDBT (LAN In)
- HDMI In 1
- HDMI In 2
- DP In (UHD 60Hz)

OH46B



OH55A-S



OH75A



OH55A-S - Front



OH55A-S - Back



Learn More samsung.com/display samsung.com/business insights.samsung.com

Product Support 1-866-SAM4BIZ Follow Us [youtube.com/samsungbizusa](https://www.youtube.com/samsungbizusa) [@SamsungBizUSA](https://twitter.com/SamsungBizUSA)

SAMSUNG

©2022 Samsung Electronics America, Inc. Samsung is a registered mark of Samsung Electronics Corp., Ltd. All other brand, product, service names and logos are trademarks and/or registered trademarks of their respective manufacturers and companies. Screen images simulated. Non-metric weights and measurements are approximate. Specifications and designs are subject to change without notice. See samsung.com for detailed information. Printed in USA. OH-DSHT-AUG22T1

¹IP56 (Ingress Protection Rating): Degrees of protection provided by enclosures (IEC 60529). ²The IK European strength test rating uses a 0-10 scale (where 10 indicates the highest possible protection) to measure the degree of resistance against external impact. ³MagicINFO license must be purchased separately.

Material List

1. **Petitioner Name:** Rob Whitehead (Olympik Signs, Inc.)

2. **Date:** 4/26/2023

3. **Project:** Portillo's Hot Dogs – Sign Variation

4. **Location:** 1775 W. Rand Rd., Arlington Heights, IL 60004

Signage: One (1) 3-panel main drive thru menu board as well as one (1) 1-panel pre-sell menu board. Fabricated aluminum shroud and base painted black with face-lit Samsung outdoor displays. All details are per Olympik Signs, Inc. rendering #22-9311