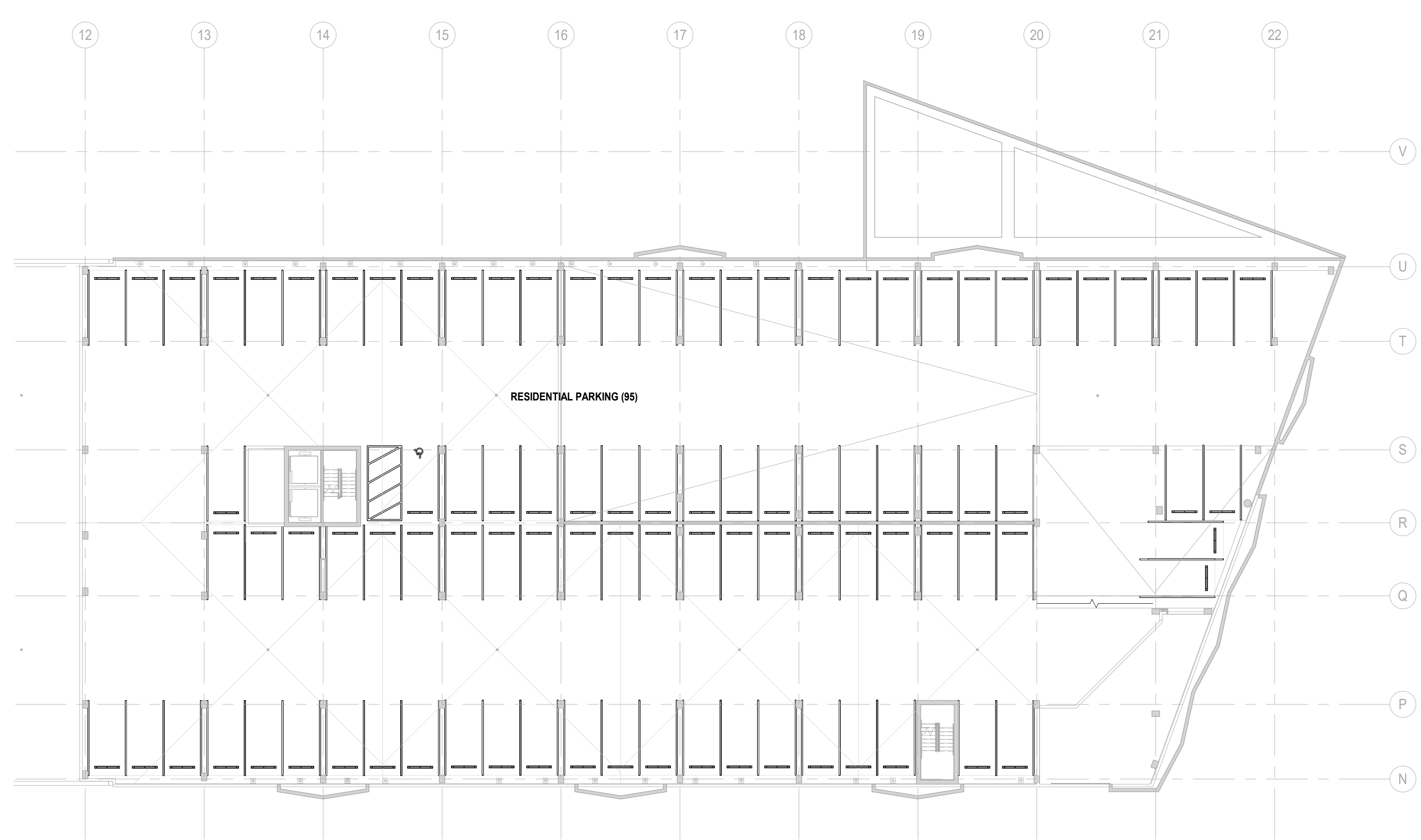
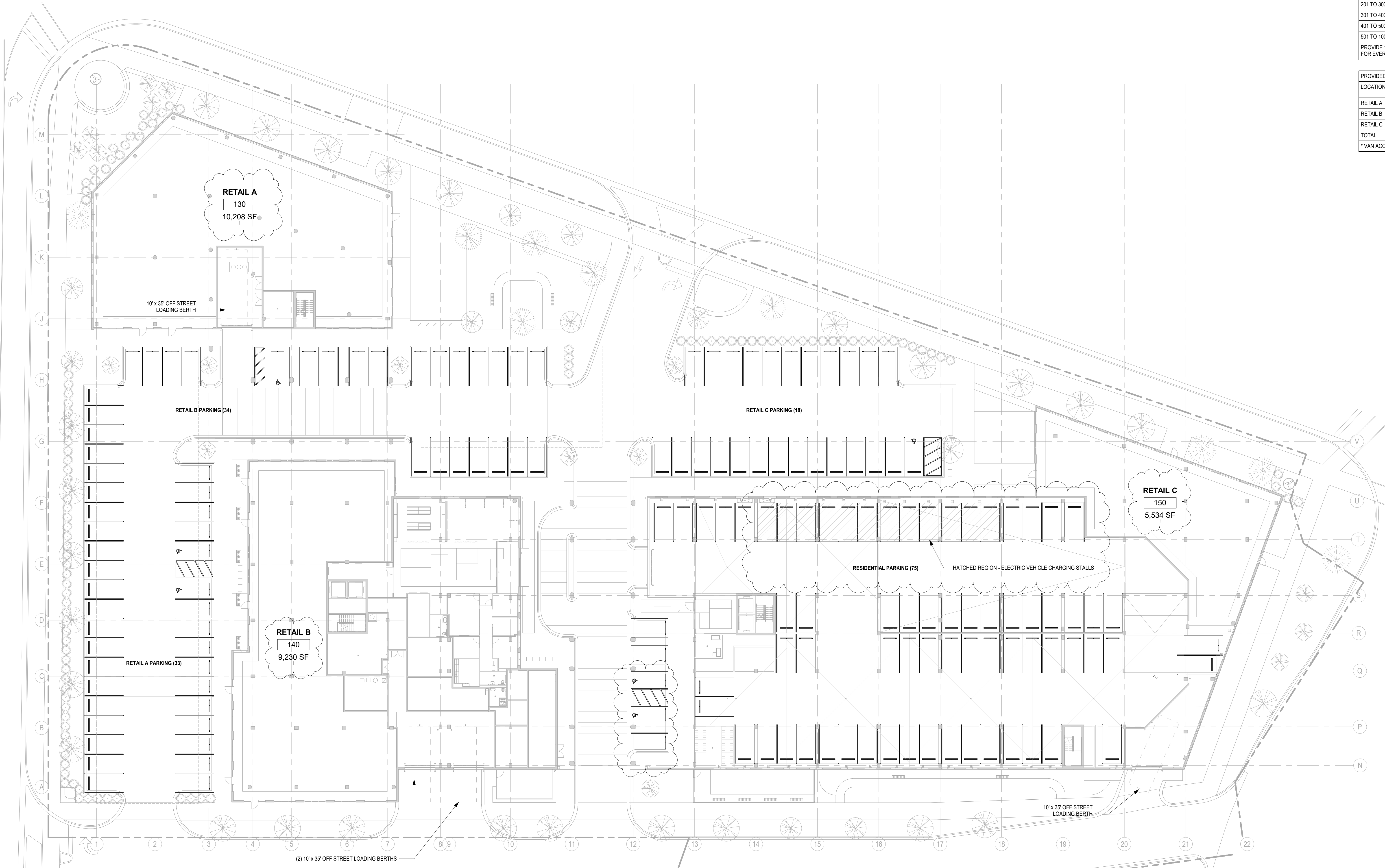


1 LEVEL LL PARKING COUNT
1" = 20'-0"



3 LEVEL 1.5 PARKING COUNT
1" = 20'-0"



2 LEVEL 1 PARKING COUNT
1" = 20'-0"

RESIDENTIAL PARKING COUNT
TYPICAL STALLS REQD PER VILLAGE OF ARLINGTON HEIGHTS CHAPTER 28 SECTIONS 5.1-21.1 (RESIDENTIAL), 10.4-2 (RETAIL), ACCESSIBLE STALLS REQD PER I.C. 208.2

REQUIRED RESIDENTIAL PARKING STALLS	UNIT TYPE	UNIT COUNT	REQUIRED STALLS PER UNIT	REQUIRED STALLS
	STUDIO	49	1.0	49
	1 BED	159	1.5	239
	2 BED+	53	2.0	106
	TOTAL	301		474 REQD

REQUIRED RESIDENTIAL ACCESSIBLE PARKING STALLS

TOTAL STALLS REQD	REQD ACCESSIBLE STALLS
1 TO 25	1
26 TO 50	2
51 TO 75	3
76 TO 100	4
101 TO 150	5
151 TO 200	6
201 TO 300	7
301 TO 400	8
401 TO 500	9 REQD
501 TO 1000	2% OF TOTAL

PROVIDE 1 VAN ACCESSIBLE STALLS (8' VERT CLEARANCE) FOR EVERY 6 OF THE REQD ACCESSIBLE STALLS = 2 REQD

PROVIDED RESIDENTIAL PARKING STALLS

LOCATION	TYPICAL STALL COUNT	ACCESSIBLE STALL COUNT	TOTAL
LEVEL LL	73	2	75
LEVEL 1.5	94	1	95
LEVEL 2	141	2	143
LEVEL 3	132	3	135
TOTAL	471	9	480 PROVIDED

* (2) VAN ACCESSIBLE STALLS PROVIDED AT LEVEL 1

RETAIL PARKING COUNT

REQUIRED RETAIL PARKING STALLS	LOCATION	AREA PER AREA	REQUIRED STALLS PER 300 SF	REQUIRED STALLS
	RETAIL A	10,208 SF	1 PER 300 SF	34
	RETAIL B	9,230 SF	1 PER 300 SF	31
	RETAIL C	5,534 SF	1 PER 300 SF	18
	TOTAL	24,972 SF		83 REQD

REQUIRED RETAIL ACCESSIBLE PARKING STALLS

TOTAL STALLS REQD	REQD ACCESSIBLE STALLS
1 TO 25	1
26 TO 50	2
51 TO 75	3
76 TO 100	4
101 TO 150	5
151 TO 200	6
201 TO 300	7
301 TO 400	8
401 TO 500	9 REQD
501 TO 1000	2% OF TOTAL

PROVIDE 1 VAN ACCESSIBLE STALLS (8' VERT CLEARANCE) FOR EVERY 6 OF THE REQD ACCESSIBLE STALLS = 1 REQD

PROVIDED RETAIL PARKING STALLS

LOCATION	TYPICAL STALL COUNT	ACCESSIBLE STALL COUNT	TOTAL
RETAIL A	33	1*	34
RETAIL B	31	2*	33
RETAIL C	17	1*	18
TOTAL	81	4	85 PROVIDED

* VAN ACCESSIBLE STALLS PROVIDED

CITY STAMP

© COPYRIGHT 2023, THOMAS ROSZAK ARCHITECTURE, LLC. DRAWINGS MAY NOT BE REPRODUCED WITHOUT PERMISSION.

ILLINOIS REGISTERED ARCHITECT 0001 019175
THOMAS A. ROSZAK
EXPIRATION DATE: NOVEMBER 30, 2024

I CERTIFY THAT THESE DRAWINGS WERE PREPARED UNDER MY DIRECT SUPERVISION AND TO THE BEST OF MY PROFESSIONAL KNOWLEDGE THEY COMPLY WITH THE VILLAGE OF ARLINGTON HEIGHTS BUILDING CODE.

No.	Date	Description
12	10/25/2023	95% CD's
11	10/20/2023	VILLAGE COMMENTS
4	8/15/2023	90% CD's

ARLINGTON HEIGHTS PHASE I

2355 S. Arlington Heights Rd., Arlington Heights, IL 60005

OWNER: Bradford Allen
300 S. Wacker Dr., 35th Floor, Chicago, IL 60606
Tel: 312-684-5700

DEVELOPER: Mocerj + Roszak
145 S. Wells St., Suite 700, Chicago, IL 60606
Tel: 312-423-7989

CONSTRUCTION MANAGER: SteelGrass, LLC
145 S. Wells St., Suite 700, Chicago, IL 60606
Tel: 312-423-7989

REVELOPMENT CONSULTANT: TR Management + Consulting
145 S. Wells St., Suite 700, Chicago, IL 60606
Tel: 312-423-7989

LANDSCAPE ARCHITECT: Thomas Roszak Architecture, LLC
145 S. Wells St., Suite 700, Chicago, IL 60606
Tel: 312-423-7989

CIVIL ENGINEER: V2 Companies
7325 Janna Avenue, Minnetonka, IL 60117
Tel: 630-724-8200

STRUCTURAL ENGINEER: Thornton Tomasetti
200 N. Wabash Avenue, Suite 1500, Chicago, IL 60601
Tel: 312-268-2000

MEP DESIGN CONSULTANT: Cosentini Associates
115 W. Madison Ave., Suite 3700, Chicago, IL 60606
Tel: 312-203-1401

GEOTECHNICAL ENGINEER: GEI
3615 W. Bryn Mawr Avenue, Suite 406, Chicago, IL 60611
Tel: 312-868-0364

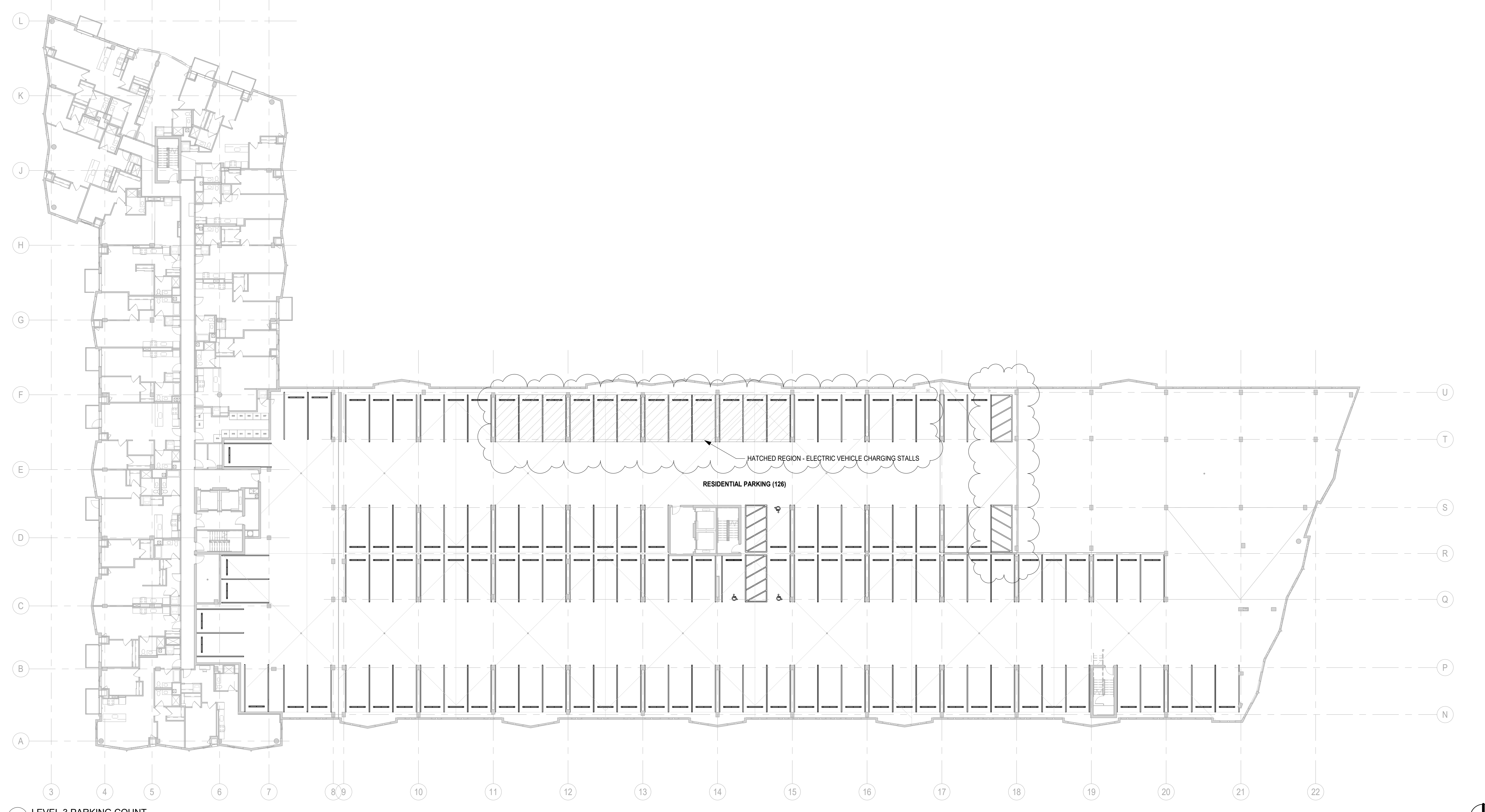
GENERAL CONTRACTOR: Clark Construction Group
216 S. Jefferson Street, Suite 502, Chicago, IL 60681
Tel: 312-474-5500

MECHANICAL DESIGN/BUILD CONTRACTOR

PLUMBING DESIGN/BUILD CONTRACTOR

ELECTRICAL DESIGN/BUILD CONTRACTOR

FIRE PROTECTION DESIGN/BUILD CONTRACTOR



2 LEVEL 3 PARKING COUNT
1" = 20'-0"

RESIDENTIAL PARKING COUNT

TYPICAL STALLS REQD PER VILLAGE OF ARLINGTON HEIGHTS CHAPTER 28 SECTIONS 5.1-21.1 (RESIDENTIAL), 10.4-2 (RETAIL), ACCESSIBLE STALLS REQD PER I.C. 208.2

REQUIRED RESIDENTIAL PARKING STALLS				
UNIT TYPE	UNIT COUNT	REQUIRED STALLS PER UNIT	REQUIRED STALLS	
STUDIO	49	1.0	49	
1 BED	159	1.5	239	
2 BED+	53	2.0	106	
TOTAL	301		494 REQD	

REQUIRED RESIDENTIAL ACCESSIBLE PARKING STALLS	
TOTAL STALLS REQD	REQD ACCESSIBLE STALLS
1 TO 25	1
26 TO 50	2
51 TO 75	3
76 TO 100	4
101 TO 150	5
151 TO 200	6
201 TO 300	7
301 TO 400	8
401 TO 500	9 REQD
501 TO 1000	2% OF TOTAL
PROVIDE 1 VAN ACCESSIBLE STALLS (8' VERT CLEARANCE) FOR EVERY 6 OF THE REQD ACCESSIBLE STALLS = 2 REQD	

PROVIDED RESIDENTIAL PARKING STALLS			
LOCATION	TYPICAL STALL COUNT	ACCESSIBLE STALL COUNT	TOTAL
LEVEL 1	73	2*	75
LEVEL LL	34	1	35
LEVEL L S	94	1	95
LEVEL 2	141	2	143
LEVEL 3	123	3	126
TOTAL	471	9	480 PROVIDED

* (2) VAN ACCESSIBLE STALLS PROVIDED AT LEVEL 1

RETAIL PARKING COUNT				
LOCATION	AREA PER AREA	REQUIRED STALLS PER 300 SF	REQUIRED STALLS	
RETAIL A	10,208 SF	1 PER 300 SF	34	
RETAIL B	9,230 SF	1 PER 300 SF	31	
RETAIL C	5,534 SF	1 PER 300 SF	18	
TOTAL	24,972 SF		83 REQD	

REQUIRED RETAIL ACCESSIBLE PARKING STALLS	
TOTAL STALLS REQD	REQD ACCESSIBLE STALLS
1 TO 25	1
26 TO 50	2
51 TO 75	3
76 TO 100	4
101 TO 150	5
151 TO 200	6
201 TO 300	7
301 TO 400	8
401 TO 500	9 REQD
501 TO 1000	2% OF TOTAL
PROVIDE 1 VAN ACCESSIBLE STALLS (8' VERT CLEARANCE) FOR EVERY 6 OF THE REQD ACCESSIBLE STALLS = 1 REQD	

PROVIDED RETAIL PARKING STALLS			
LOCATION	TYPICAL STALL COUNT	ACCESSIBLE STALL COUNT	TOTAL
RETAIL A	33	1*	34
RETAIL B	31	2*	33
RETAIL C	17	1*	18
TOTAL	81	4	85 PROVIDED

* VAN ACCESSIBLE STALLS PROVIDED

CITY STAMP

© COPYRIGHT 2023, THOMAS ROSZAK ARCHITECTURE, LLC. DRAWINGS MAY NOT BE REPRODUCED WITHOUT PERMISSION.

ILLINOIS REGISTERED ARCHITECT 8001 019175 EXPIRATION DATE: NOVEMBER 30, 2024

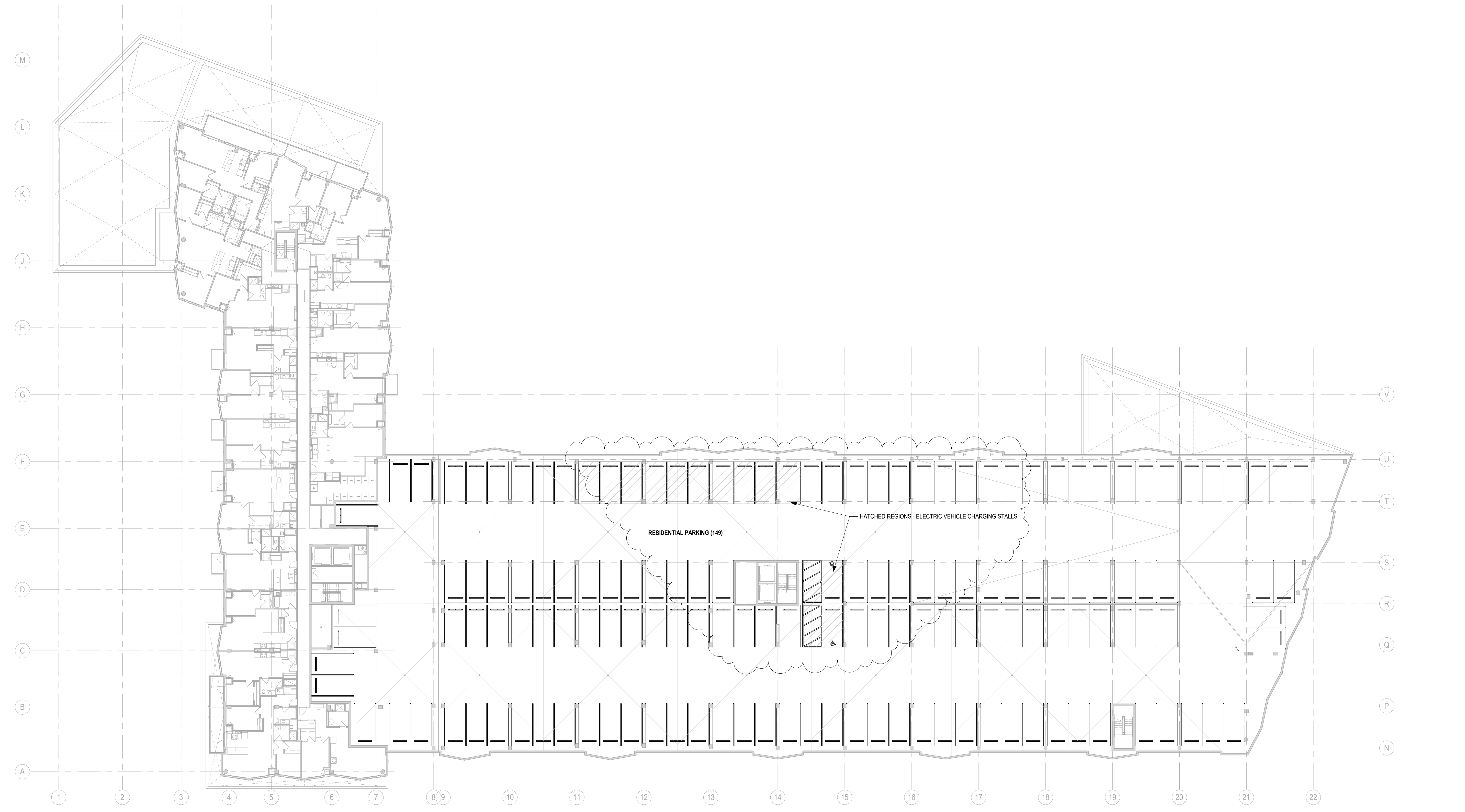
I CERTIFY THAT THESE DRAWINGS WERE PREPARED UNDER MY DIRECT SUPERVISION AND TO THE BEST OF MY PROFESSIONAL KNOWLEDGE THEY CONFORM TO THE VILLAGE OF ARLINGTON HEIGHTS BUILDING CODE.

No.	Date	Village Comments	Description
11	10/20/2023	VILLAGE COMMENTS	
4	8/15/2023	90% CD's	

ARLINGTON HEIGHTS PHASE I

2355 S. Arlington Heights Rd., Arlington Heights, IL 60005

- OWNER
Bradford Allen
300 S. Wacker Dr., 35th Floor
Chicago, IL 60606
Tel: 312-684-5700
- DEVELOPER
Mocerj + Roszak
145 S. Wells St., Suite 700
Chicago, IL 60606
Tel: 312-423-7989
- ARCHITECT
Thomas Roszak Architecture, LLC
145 S. Wells St., Suite 700
Chicago, IL 60606
Tel: 312-423-7989
- CONSTRUCTION MANAGER
SteelGrass, LLC
145 S. Wells St., Suite 700
Chicago, IL 60606
Tel: 312-423-7989
- ENVIRONMENTAL CONSULTANT
TR Management + Consulting
145 S. Wells St., Suite 700
Chicago, IL 60606
Tel: 312-423-7989
- LANDSCAPE ARCHITECT
Thomas Roszak Architecture, LLC
145 S. Wells St., Suite 700
Chicago, IL 60606
Tel: 312-423-7989
- CIVIL ENGINEER
V2 Companies
7325 Janna Avenue
Mortonridge, IL 60051
Tel: 630-774-9200
- STRUCTURAL ENGINEER
Thornton Tomasetti
200 N. Wabash Avenue, Suite 1500
Chicago, IL 60601
Tel: 312-266-2000
- MEP DESIGN CONSULTANT
Cosentini Associates
115 S. Wacker Drive, Suite 3700
Chicago, IL 60606
Tel: 312-223-1601
- GEOTECHNICAL ENGINEER
GEI
8815 W. Bryn Mawr Avenue, Suite 406
Chicago, IL 60631
Tel: 312-868-0364
- GENERAL CONTRACTOR
Clark Construction Group
216 S. Jefferson Street, Suite 502
Chicago, IL 60681
Tel: 312-474-5500
- MECHANICAL DESIGN/BUILD CONTRACTOR
- PLUMBING DESIGN/BUILD CONTRACTOR
- ELECTRICAL DESIGN/BUILD CONTRACTOR
- FIRE PROTECTION DESIGN/BUILD CONTRACTOR



1 LEVEL 2 PARKING COUNT
1" = 20'-0"