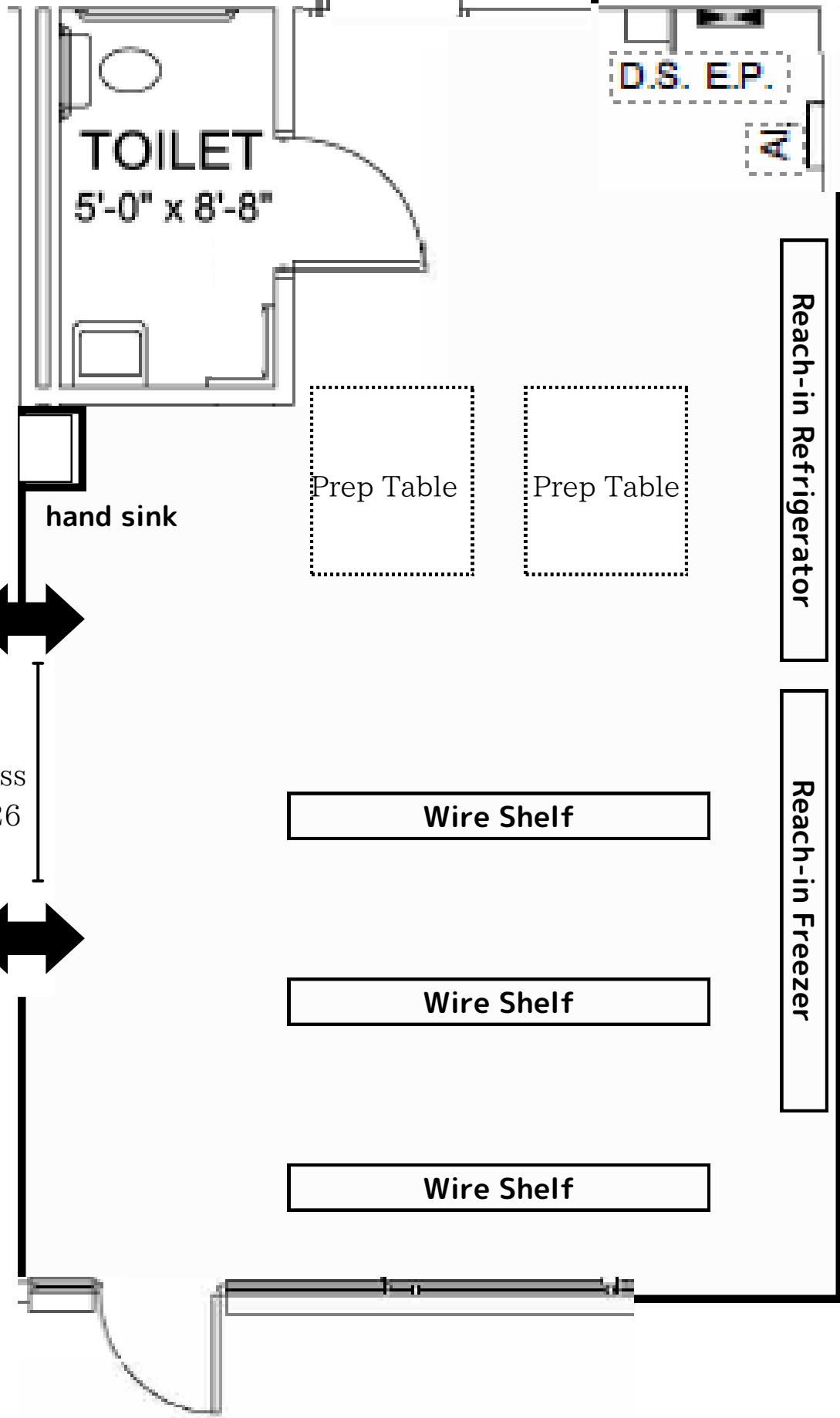
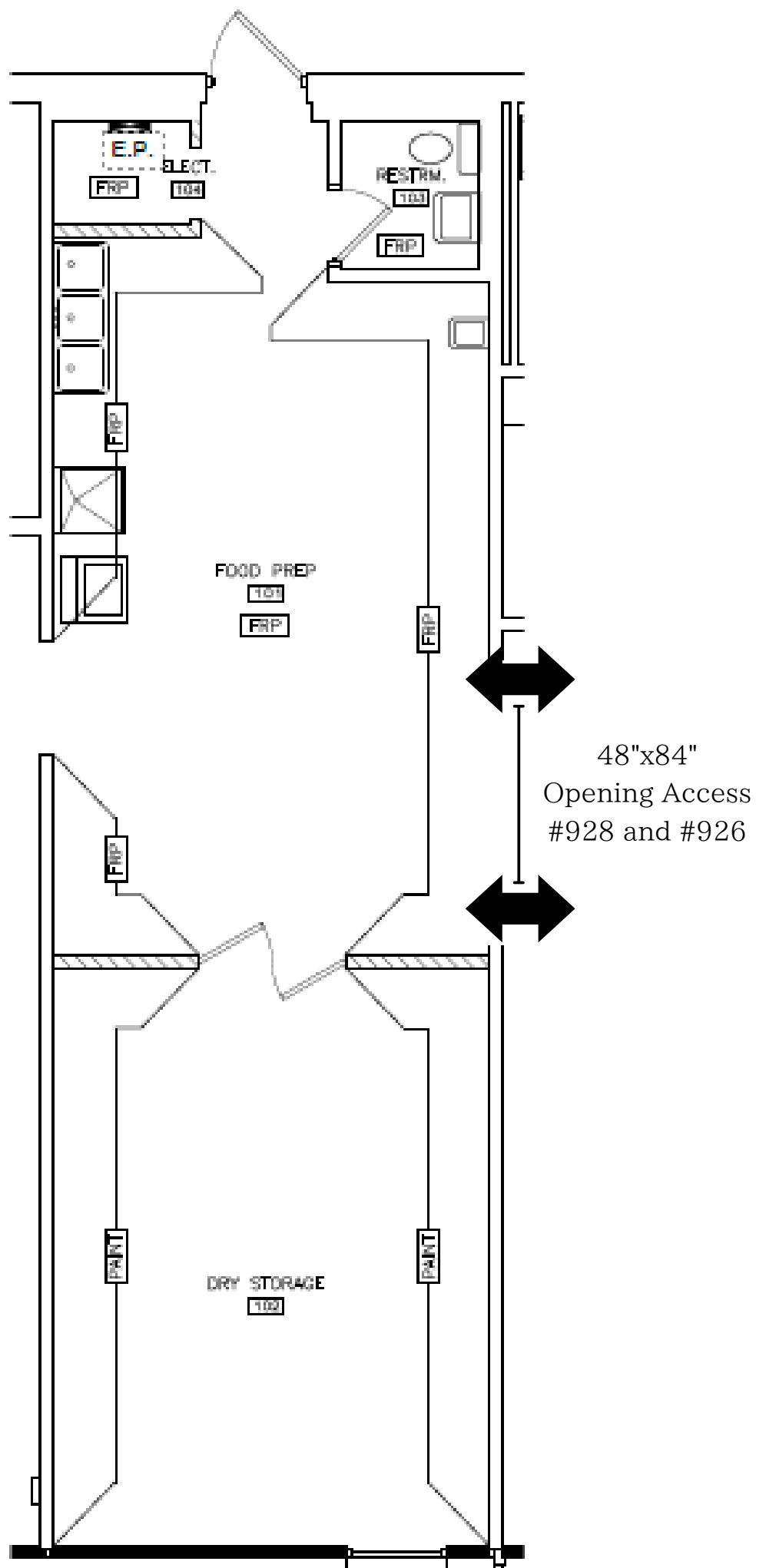


Unit # 926  
Dry Storage /  
Extended work space of #928



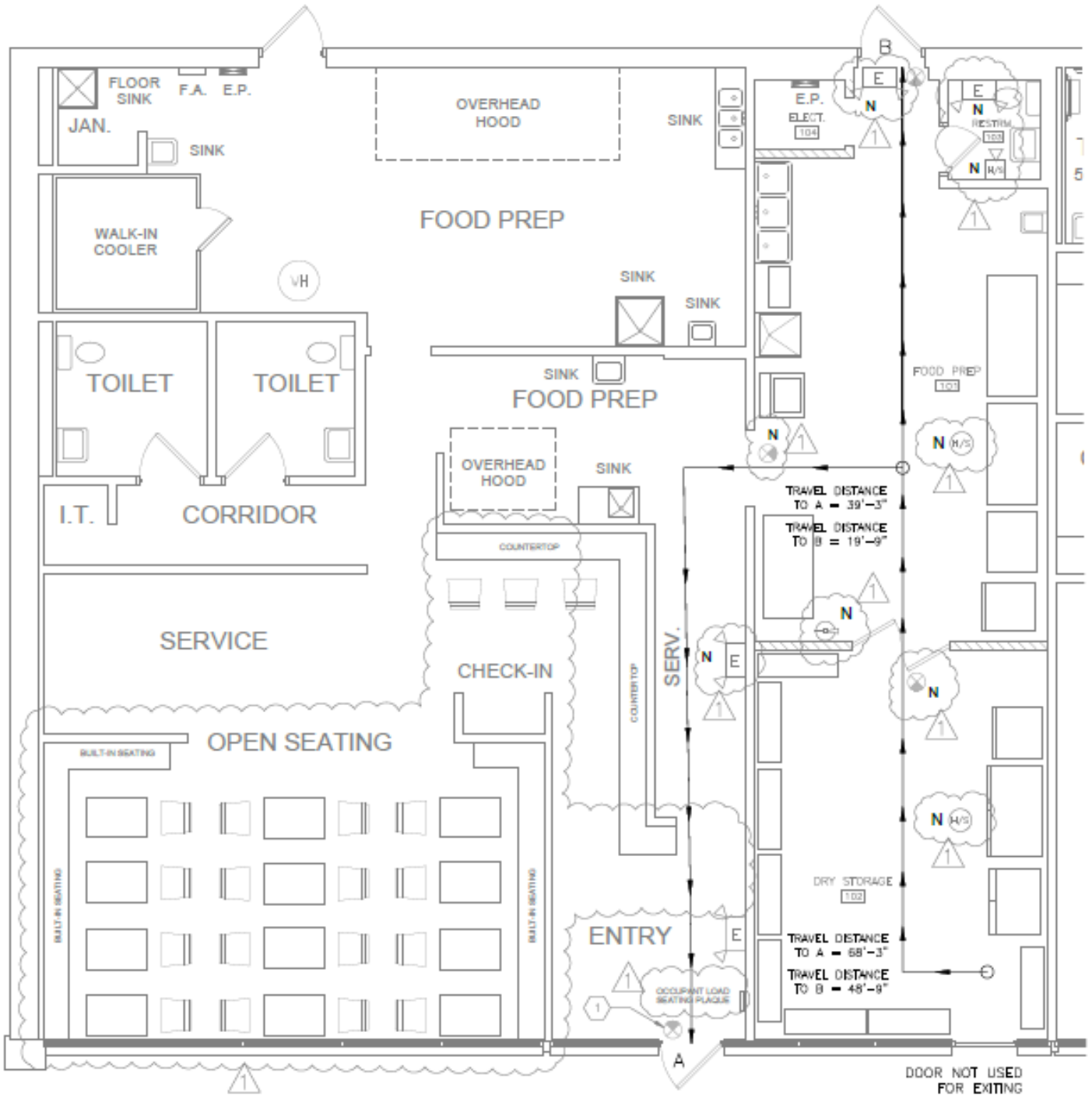
48"x84"  
Opening Access  
#928 and #926

Unit # 928  
Extended Prep  
& dry storage  
of #932

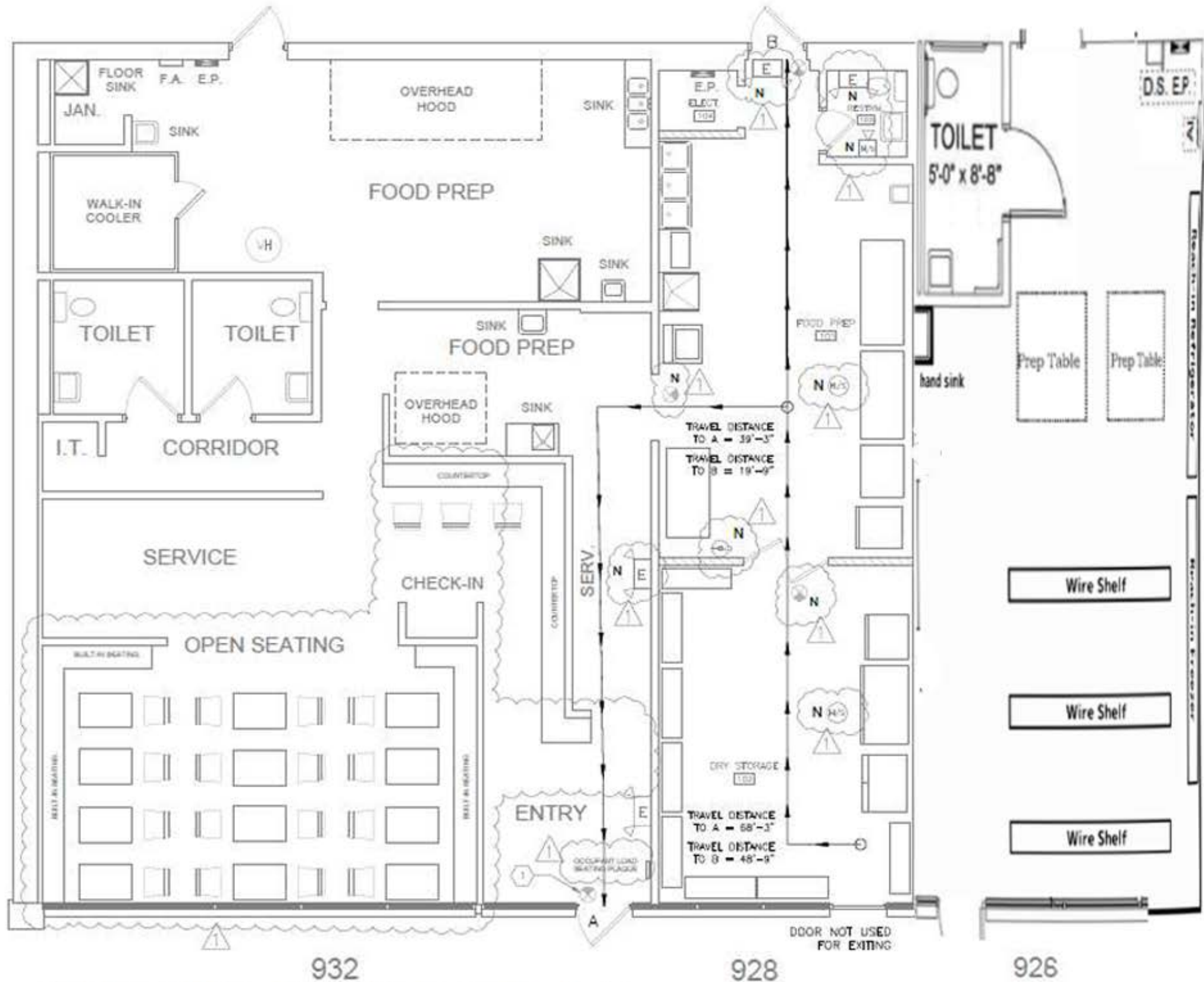


# Unit # 932

Dining Space to #928  
(extended Prep space)



932 928  
(Existing (N.I.C.) - Shown For Reference Only)



932  
 (Existing (N.I.C.) - Shown For Reference Only)

928

926