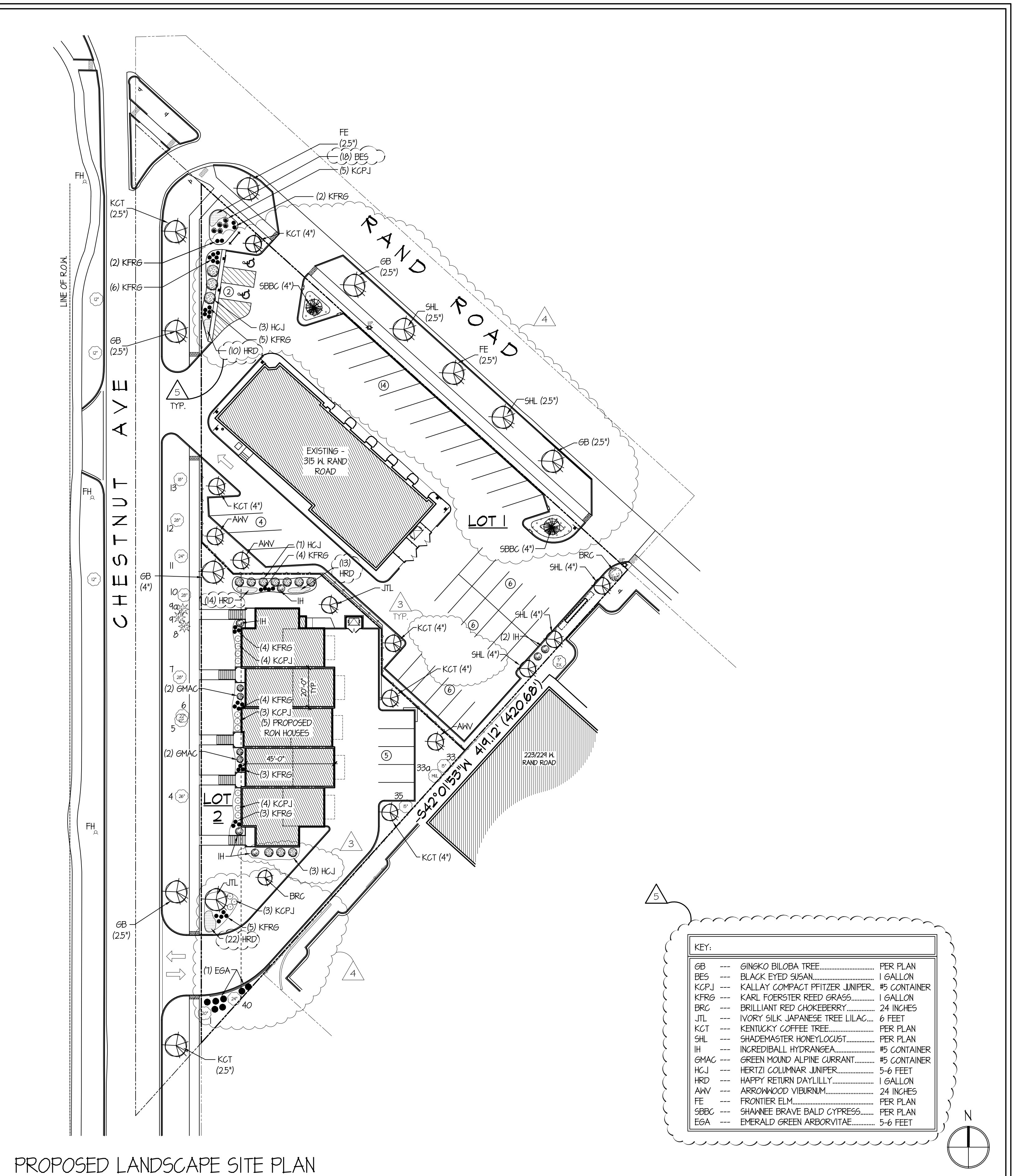
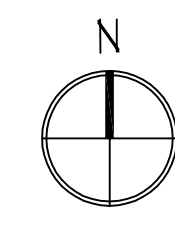


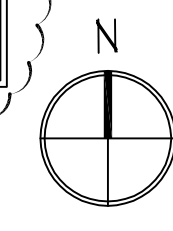
TREE PRESERVATION PLAN

SCALE: 1" = 30'-0"



PROPOSED LANDSCAPE SITE PLAN

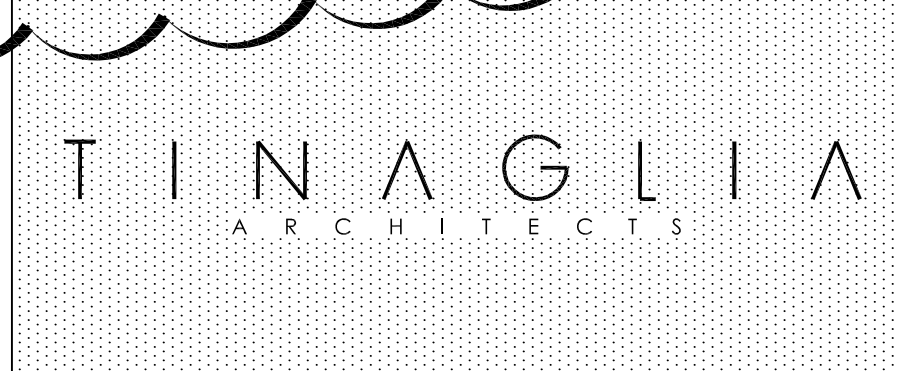
SCALE: 1" = 30'-0"



KEY:

GB	--- GINGKO BILOBA TREE	PER PLAN
BES	--- BLACK EYED SUSAN	1 GALLON
KCPJ	--- KALLAY COMPACT PFITZER JUNIFER	#5 CONTAINER
KFRG	--- KARL FOERSTER REED GRASS	1 GALLON
BRG	--- BRILLIANT RED CHOKEBERRY	24 INCHES
JTL	--- IVORY SILK JAPANESE TREE LILAC	6 FEET
KCT	--- KENTUCKY COFFEE TREE	PER PLAN
SHL	--- SHADEMASTER HONEYLOCUST	PER PLAN
IH	--- INGREDBALL HYDRANGEA	#5 CONTAINER
GMAC	--- GREEN MOUND ALPINE CURRANT	#5 CONTAINER
HGJ	--- HERTZI COLUMNAR JUNIFER	5-6 FEET
HRD	--- HAPPY RETURN DAYLILLY	1 GALLON
AWV	--- ARRONWOOD VIBURNUM	24 INCHES
FE	--- FRONTIER ELM	PER PLAN
SBBC	--- SHANNEE BRAVE BALD CYPRESS	PER PLAN
EGA	--- EMERALD GREEN ARBORVITAE	5-6 FEET

TINAGLIA ARCHITECTS-INC
814 WEST NORTHWEST HIGHWAY
ARLINGTON HEIGHTS-IL 60004
VOICE • 847 253 0002
www.tinaglia.com



CLIENT
ARLINGTON PERFORMANCE CENTER
315 W. RAND ROAD
ARLINGTON HEIGHTS, ILLINOIS 60004

PROJECT
NEW ROWHOME DEVELOPMENT
CHESTNUT AVE. & RAND ROAD
ARLINGTON HEIGHTS, ILLINOIS 60004

FILE NAME: 4166-7P_Landscape DRAWN BY: KCK DATE: 8.31.23

NO.	REVISED PER	DATE	BY	NO.	REVISED PER	DATE	BY
1	CPRC COMMENTS	6.30.23	RDL				
2	PC & DC SUBMITTALS	8.23.22	RDL				
3	PC ROUND 1 COMMENTS	1.16.24	KQB				
4	PC ROUND 2 COMMENTS	3.5.24	KQB				
5	PC ROUND 3 COMMENTS	4.12.24	KQB				

DRAWING TITLE
LANDSCAPE PLAN

JOB NO. **416622**
SHEET NO. **LS.1**
OF 10
PROFESSIONAL DESIGN FIRM LICENSE #184-002934

Number	Size	Scientific Name	Common Name	Condition	Notes
1	28"	Ulmus Pumila	Siberian Elm	Fair	
2	17"	Ulmus Pumila	Siberian Elm	Fair	To be removed
2a	12"	Ulmus Pumila	Siberian Elm	Fair	To be removed
3	24"	Ulmus Pumila	Siberian Elm	Decline	To be removed
4	36"	Ulmus Pumila	Siberian Elm	Fair	
5	12"	Morus Alba	Mulberry	Fair	
6	20"	Ulmus Pumila	Siberian Elm	Fair	
7	29"	Ulmus Pumila	Siberian Elm	Decline (Hollow)	
8	12"	Juniperus Virginiana	Red Cedar	Fair	
9	12"	Juniperus Virginiana	Red Cedar	Fair	
9a	12"	Juniperus Virginiana	Red Cedar	Fair	
10	29"	Ulmus Pumila	Siberian Elm	Fair	
11	29"	Ulmus Pumila	Siberian Elm	Decline (Hollow)	
12	36"	Ulmus Pumila	Siberian Elm	Fair	
13	24"	Ulmus Pumila	Siberian Elm	Fair	
14	36"	Ulmus Pumila	Siberian Elm	Fair	To be removed
15	30"	Ulmus Pumila	Siberian Elm	Fair	To be removed
16	24"	Ulmus Pumila	Siberian Elm	Fair	To be removed
17	16"	Ulmus Pumila	Siberian Elm	Fair	To be removed
18	26"	Ulmus Pumila	Siberian Elm	Decline	To be removed
19	13"	Ulmus Pumila	Siberian Elm	Fair	To be removed
20	20"	Ulmus Pumila	Siberian Elm	Decline	To be removed
21	24"	Celtis Laevigata	Hackberry	Fair	To be removed
22	16"	Ulmus Pumila	Siberian Elm	Decline	To be removed
23	18"	Ulmus Pumila	Siberian Elm	Decline	To be removed
24	18"	Ulmus Pumila	Siberian Elm	Decline	To be removed
25	12"	Juniperus Virginiana	Red Cedar	Fair	To be removed
26	32"	Ulmus Pumila	Siberian Elm	Decline	To be removed
27	30"	Ulmus Pumila	Siberian Elm	Decline	To be removed
28	24"	Ulmus Pumila	Siberian Elm	Fair	To be removed
29	36"	Ulmus Pumila	Siberian Elm	Fair	To be removed
30	22"	Ulmus Pumila	Siberian Elm	Decline	To be removed
31	36"	Ulmus Pumila	Siberian Elm	Decline	To be removed
32	29"	Ulmus Pumila	Siberian Elm	Fair	To be removed
33	29"	Ulmus Pumila	Siberian Elm	Fair	
33a	5"	Morus Alba	Mulberry	Fair	
34	22"	Ulmus Pumila	Siberian Elm	Dead	To be removed
35	24"	Ulmus Pumila	Siberian Elm	Decline	
36	48"	Acer Saccharinum	Silver Maple	Fair	To be removed
37	20"	Malus Alba	Apple	Decline	To be removed
38	22"	Morus Alba	Mulberry	Decline	To be removed
39	24"	Ulmus Pumila	Siberian Elm	Decline	To be removed
40	28"	Ulmus Pumila	Siberian Elm	Fair	
41	20"	Ulmus Pumila	Siberian Elm	Fair	To be removed
42	18"	Ulmus Pumila	Siberian Elm	Fair	To be removed
43	20"	Ulmus Pumila	Siberian Elm	Fair	To be removed
44	18"	Ulmus Pumila	Siberian Elm	Fair	To be removed
45	22"	Picea Pungens	Spruce	Decline	To be removed
46	22"	Picea Pungens	Spruce	Decline	To be removed