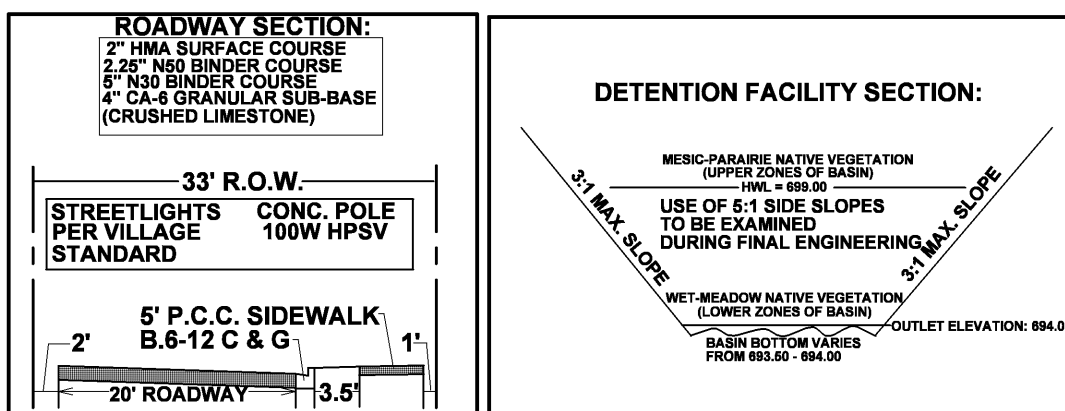




LOCATION MAP NORTH

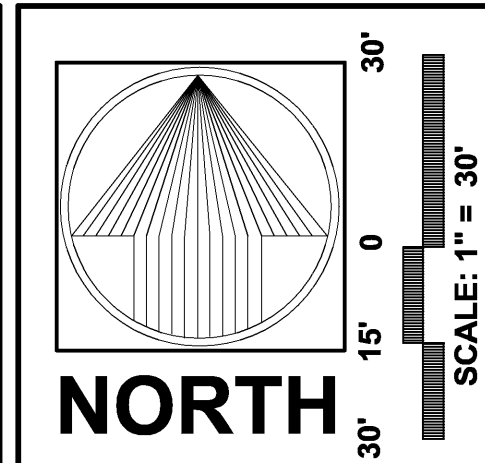
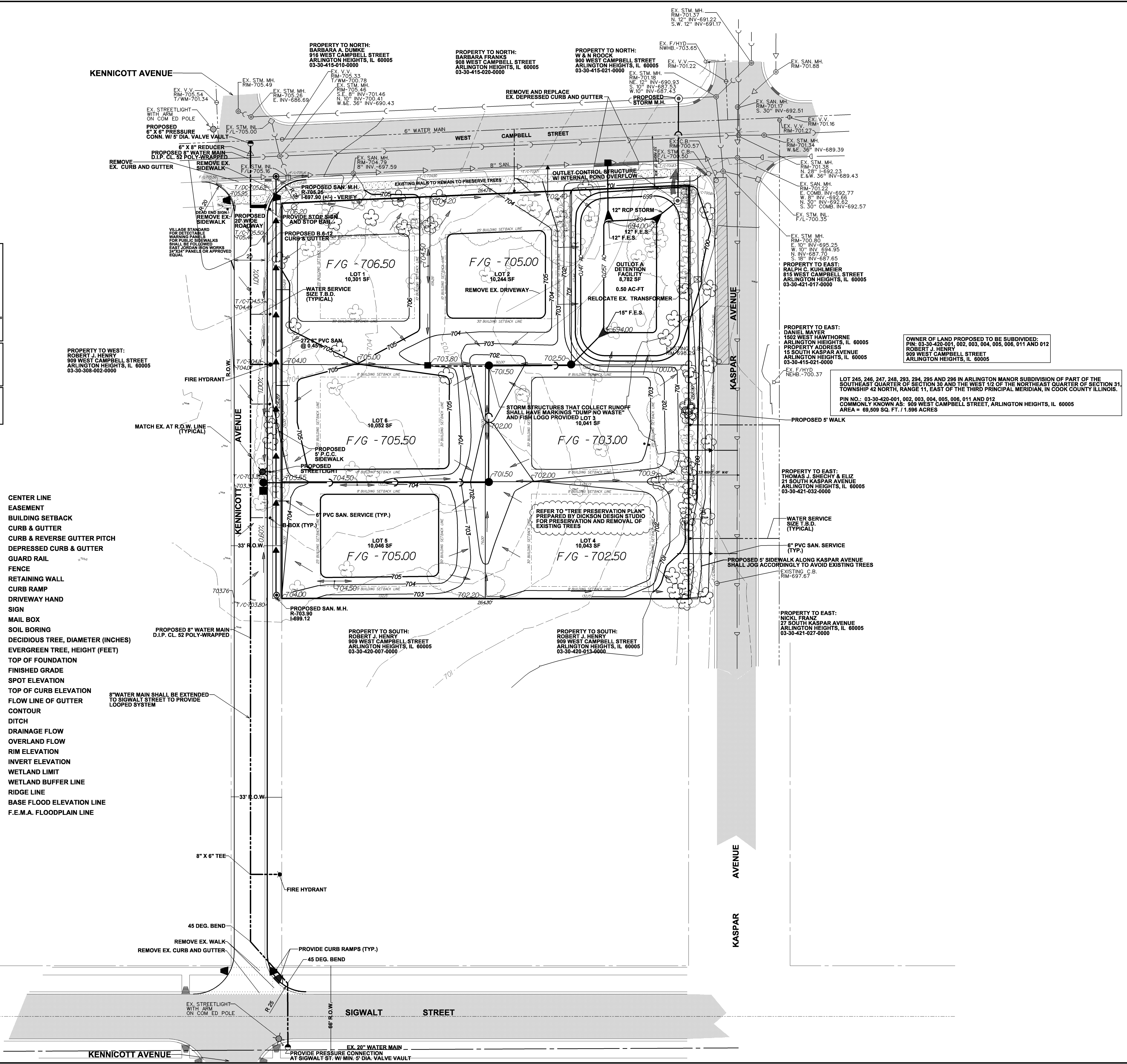


SITE AREA: 1.596 AC
 ALLOWABLE RELEASE RATE = @ 0.18 CFS/AC = 0.287 CFS
 REQUIRED DETENTION VOLUME = 0.413 AC-FT
 VOLUME PROVIDED IN PROPOSED FACILITY = 0.50 AC-FT

BENCH MARK:
 VILLAGE OF ARLINGTON HEIGHTS MONUMENT #61
 4" DIA. ALUMINUM DISC IN GROUND 29' 4" SOUTH OF THE CENTERLINE OF CAMPBELL STREET AND 33' 4" EAST OF THE CENTERLINE OF DWYER AVENUE AT SOUTHEAST CORNER OF THE INTERSECTION ELEVATION: 708.03 NAVD 1988 (VILLAGE DATUM)

LEGEND

| EXISTING | PROPOSED | DESCRIPTION | EXISTING | PROPOSED | DESCRIPTION |
|----------|----------|---------------------|----------|----------|---------------------|
| | | SANITARY SEWER | | | FORCE MAIN |
| | | STORM SEWER | | | P.V.C. STORM SEWER |
| | | COMBINED SEWER | | | DRAIN TILE |
| | | WATER MAIN | | | TRENCH BACKFILL |
| | | MANHOLE | | | CATCH BASIN |
| | | INLET | | | 2' STORM MANHOLE |
| | | INLET MANHOLE | | | FLARED END SECTION |
| | | LIFT STATION | | | CLEAN-OUT |
| | | METER VAULT | | | VALVE VAULT |
| | | VALVE BOX | | | BUFFALO BOX |
| | | FIRE HYDRANT | | | CONFLICT |
| | | CROSSING | | | TRIPLE BASIN |
| | | GREASE BASIN | | | GAS MAIN |
| | | ELECTRIC CABLE | | | TELEPHONE CABLE |
| | | TELEPHONE CABLE | | | FIBER OPTIC CABLE |
| | | CABLE | | | STREET LIGHT |
| | | UTILITY POLE | | | PEDESTAL |
| | | PEDESTAL | | | TRANSFORMER |
| | | GAS VALVE | | | ELECTRIC BOX |
| | | TELEPHONE MANHOLE | | | FIBER OPTIC MANHOLE |
| | | FIBER OPTIC MANHOLE | | | TRAFFIC SIGNAL BOX |
| | | TRAFFIC SIGNAL | | | |



CAMPBELL STREET DEVELOPMENT
 ARLINGTON HEIGHTS, ILLINOIS

PEARSON, BROWN & ASSOCIATES, INC.
 CONSULTING ENGINEERS
 1850 W. WINCHESTER ROAD - SUITE 205
 LIBERTYVILLE, IL 60088
 PHONE: (631) 387-2527
 FAX: (631) 387-2527
 E-MAIL ADDRESS: pba@pearsonbrown.com

DESIGNED BY: A.K.Z.
 DRAWN BY: A.K.Z.
 CHECKED BY: A.K.Z.
 ORIGINAL ISSUE: 09/10/14

| DATE | BY | DESCRIPTION |
|----------|-----|--|
| 11-12-14 | JFC | REVISED PER VILLAGE REVIEW COMMENTS |
| 11-18-14 | JFC | REVISED DUE TO TREE PRESERVATION COORDINATION |
| 12-05-14 | JFC | REVISED TO EXTEND KENNICOTT AVENUE TO SIGWALT STREET |

PRELIMINARY ENGINEERING

SHEET NUMBER
1
 OF 1 SHEET

JOB No. 1458