

REVISIONS

NO.	REVISION	DATE
1.	VILL. COMMENTS	11/14/14
2.	PER CIVIL ENG.	11/18/14
3.		
4.		
5.		
6.		
7.		
8.		
9.		
10.		

SCALE

AS SHOWN

CLIENT NAME AND ADDRESS

EMERALD HOMES

800 S. MILWAUKEE AVENUE, SUITE 250
LIBERTYVILLE, IL

PROJECT NAME AND SHEET TITLE

**CAMPBELL STREET
DEVELOPMENT**

CAMPBELL STREET & KASPAR AVENUE
ARLINGTON HEIGHTS, IL

TREE PRESERVATION PLAN

PLAN DATE

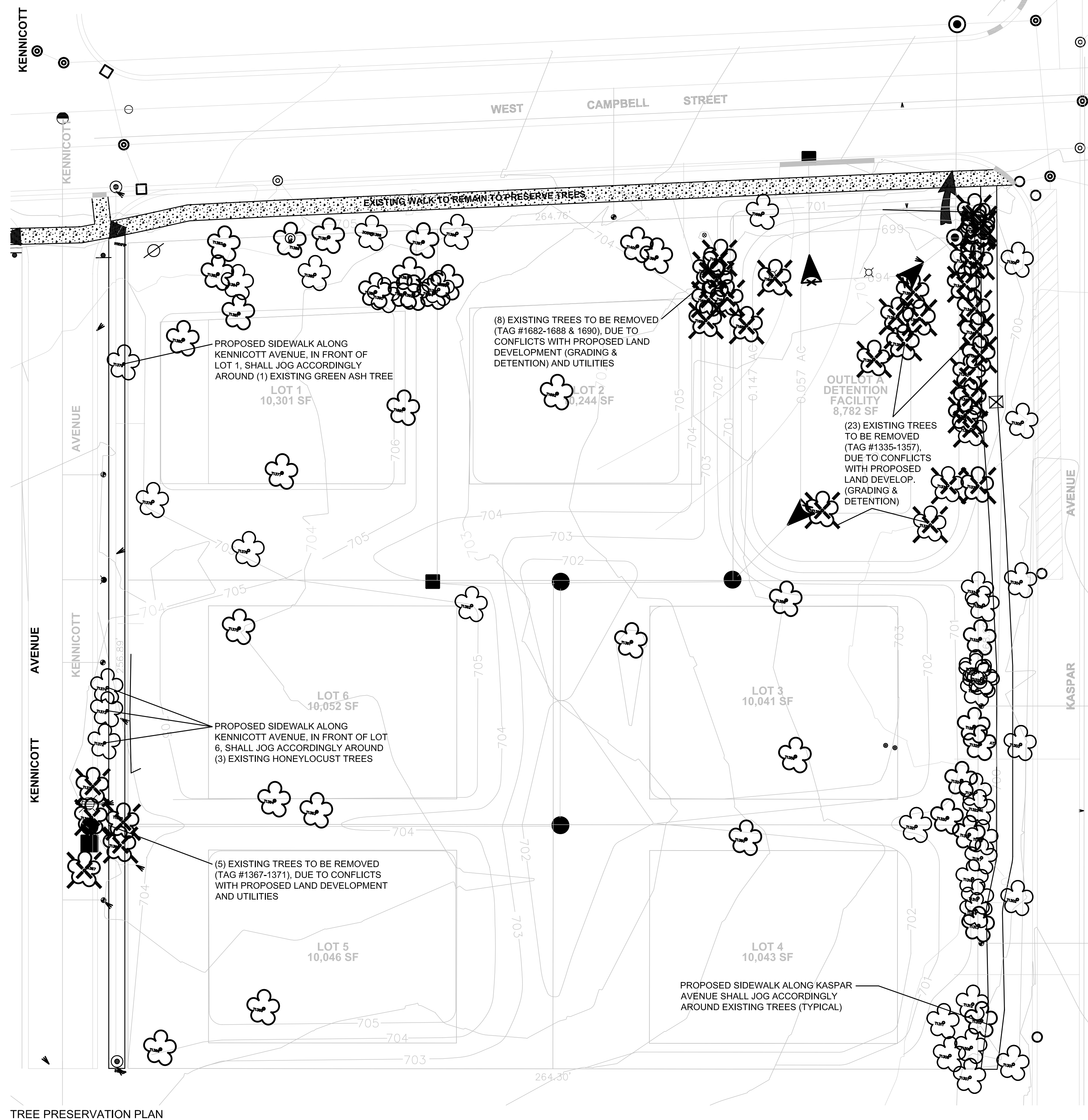
SEPTEMBER 19, 2014

SHEET NUMBER

1 OF 2

PROJECT NUMBER

CAMB_CAMPBELL_A.H.

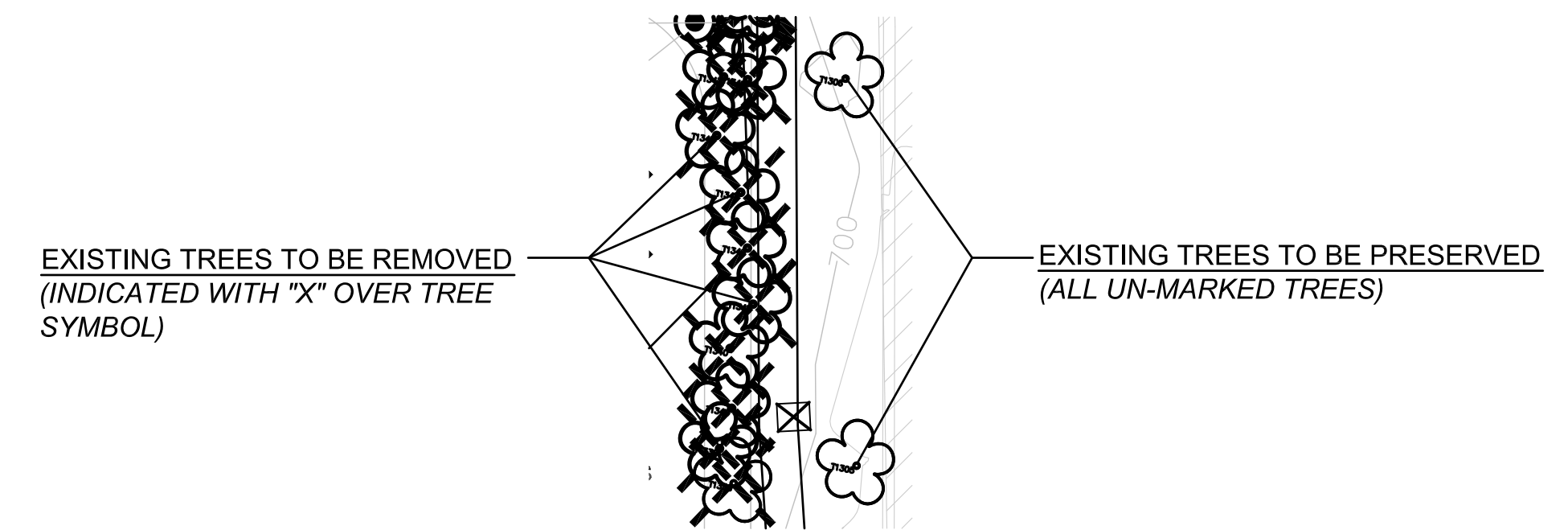


TREE PRESERVATION PLAN

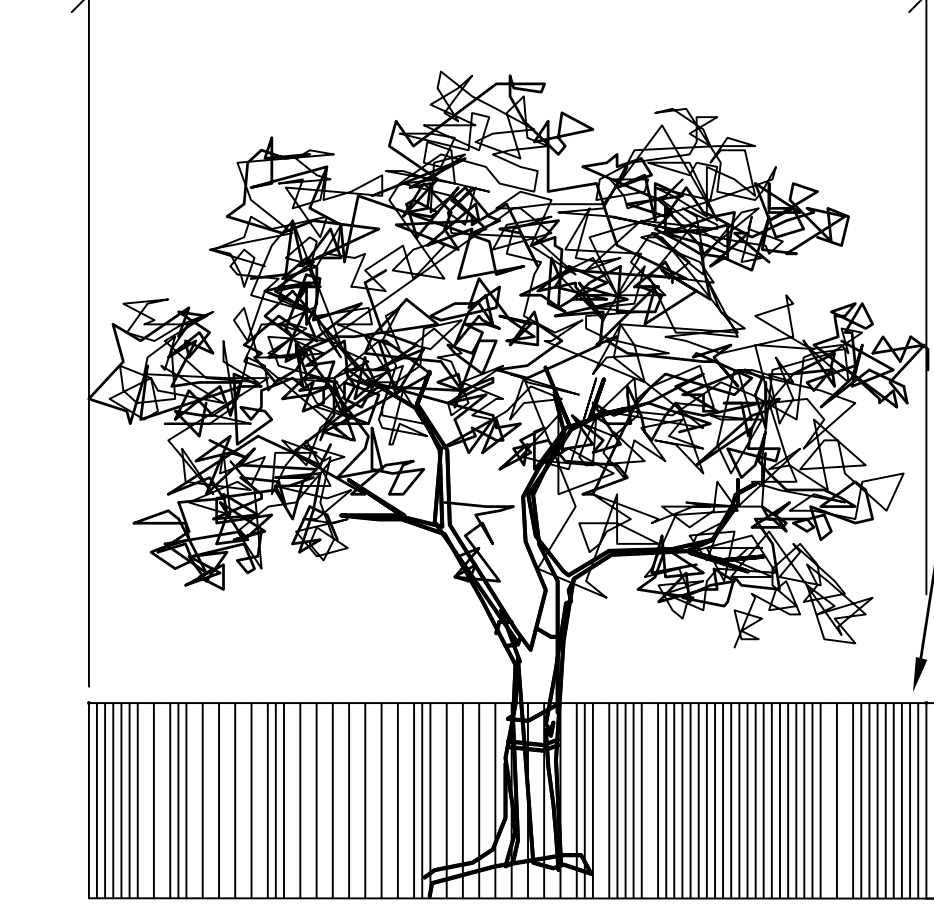
SCALE: 1" = 20'-0"



TREE PRESERVATION SYMBOLS KEY



PRESERVATION FENCE AT DRIP LINE



FENCE TO BE PROVIDED AROUND ALL EXISTING TREES TO REMAIN. FENCE TO REMAIN IN PLACE UNTIL ADJACENT CONSTRUCTION IS COMPLETE.

FENCE TO BE 4' TALL, ROLLED WOOD LATHE OR APPROVED EQUAL.

SECURE FENCE TO METAL STAKES, SPACE NO GREATER THAN 8' O.C.

NOTE:

AFTER TREES ARE FENCED, NOTHING IS TO BE DISTURBED, STORED, OR CUT INSIDE CONSTRUCTION FENCE. REMOVE FENCE ONLY AFTER ALL CONSTRUCTION WORK HAS BEEN COMPLETED.

TREE PRESERVATION FENCE DETAIL

NOT TO SCALE

NOTES

1. TREE SURVEY WAS PREPARED BY OTHERS.
2. TREE INVENTORY WAS PREPARED BY URBAN FOREST MANAGEMENT (FOX RIVE GROVE, IL - TEL 847.516.9708).
3. ALL TREES MEASURING 3" CALIPER AND LARGER ON THE PROPERTY, LOCATED AT 909 W. CAMPBELL, WERE SURVEYED AND INVENTORIED. A TOTAL OF 111 TREES WERE INVENTORIED:

- Tree species inventoried on this property include Boxelder Maple, Norway Maple, Silver Maple, Hackberry, Honeylocust, Black Walnut, Eastern Red Cedar, Mulberry, Pin Oak, American Elm, Siberian Elm and other species in smaller quantities. The most common species inventoried was Norway Maple with 15% of all species inventoried, followed by Mulberry with 12% and American Elm with 10%. Understory species include Buckthorn, Honeysuckle, Eastern Red Cedar, Burning Bush and smaller trees of the same species inventoried. There are some large Buckthorn, which were not inventoried, in the northwest corner of the lot and along the north property line. Six (6) parkway trees were inventoried along Kaspar Avenue, all of these being mature Silver Maple.

- Approximately 17% of the inventoried trees are in fair/poor condition or worse, with four (4) of these being dead at the time of the inventory. Most of the trees contain varying amounts of deadwood, decay and/or structural defects. There were only two Ash trees inventoried on this site, with one of these dying back as a result of Emerald Ash Borer.

4. FOR COMPLETE TREE INVENTORY LISTING, SEE SHEET #2.



dickson design
STUDIO

DICKSONDESIGNSTUDIO.COM
526 SKYLINE DRIVE
ALGONQUIN IL 60102
847.878.4019

REVISIONS

1.	W.L. COMMENTS 11/14/14
2.	PER CIVL ENG. 11/18/14
3.	
4.	
5.	
6.	
7.	
8.	
9.	
10.	

SCALE
AS SHOWN

CLIENT NAME AND ADDRESS

EMERALD HOMES
800 S. MILWAUKEE AVENUE, SUITE 250
LIBERTYVILLE, IL

PROJECT NAME AND SHEET TITLE
CAMPBELL STREET DEVELOPMENT
CAMPBELL STREET & KASPAR AVENUE
ARLINGTON HEIGHTS, IL

TREE PRESERVATION PLAN

PLAN DATE
SEPTEMBER 19, 2014

SHEET NUMBER

2 OF 2

PROJECT NUMBER
GMB CAMPBELL A.H.

1301	Silver Maple	Acer saccharinum	31	3	3	minor deadwood, upper canopy, trunk scar, multiple leaders	Parkway Tree.
1302	Silver Maple	Acer saccharinum	28	4	4	one sided, hollow, multiple leaders	Parkway tree.
1303	Silver Maple	Acer saccharinum	24	3	3	weak crotch, multiple leaders	Parkway tree.
1304	Silver Maple	Acer saccharinum	29	3	3	weak crotch, double leader	Parkway tree.
1305	Silver Maple	Acer saccharinum	30	3	3	minor deadwood, upper canopy, trunk scar, multiple leaders	Parkway tree.
1306	Silver Maple	Acer saccharinum	28	3	3	minor deadwood, gridding root, trunk well	Parkway tree.
1307	S.E. property corner	Norway Maple	2.5	2	2	over-topped, slight lean, twist in trunk	
1308	E. property line	Norway Maple	5	2	4	one sided, over-topped, slight lean	
1309	E. property line	Hackberry	3	2	4	sweep, over-topped	
1310	E. property line	Mulberry	3	3	4	one sided, over-topped, damaged leader, multiple leaders	Forked at 5' with 8", 7" co-leaders.
1311	E. property line	Norway Maple	8	2	4	weak crotch	Forked at base with a 2" co-leader.
1312	E. property line	Norway Maple	2	4	4	minor deadwood, basal decay, over-topped	
1313	E. property line	Mulberry	7	3	3	over-topped, damaged leader, slight sweep, multiple leaders	
1314	E. property line	Norway Maple	3	3	4	minor deadwood, suckering, damaged leader	Forked at 5' with 3", 2" co-leaders.
1315	E. property line	Norway Maple	5	3	4	suckering, over-topped, damaged leader	Forked at base with 2", 2", 2" co-leaders.
1316	E. property line	American Elm	3	3	4	weak crotch, over-topped, double leader	Forked at base with a 2" co-leader.
1317	E. property line	Norway Maple	2	2	4	weak crotch, damaged leader, double leader	Forked at 5' with a 2" co-leader.
1318	E. property line	American Elm	3	3	4	over-topped, damaged leader, slight sweep	
1319	E. property line	Mulberry	4	3	4	suckering, damaged leader, multiple leaders	
1320	E. property line	Tree-of-Heaven	3	2	3	over-topped, double leader	
1321	E. property line	Pin Oak	34	3	3	minor deadwood, weak crotch, multiple leaders	
1322	E. property line	Norway Maple	2.5	4	4	basal decay, basal scar, suckering, over-topped, slight lean	Forked at base with 2.5", 2", 1" co-leaders.
1323	E. property line	Norway Maple	4	4	4	basal decay, over-topped, damaged leader, twist in trunk	Forked at 5' with 2.5", 2.5", 2" co-leaders.
1324	E. property line	Tree-of-Heaven	11	2	4	over-topped, slight sweep	
1325	E. property line	Mulberry	4.5	3	4	damaged leader, slight lean, multiple leaders	
1326	E. property line	Mulberry	5	3	4	suckering, damaged leader, multiple leaders	Forked at base with 4", 4" co-leaders.
1327	E. property line	Norway Maple	3.5	3	4	decay, damaged leader, twist in trunk	Forked at base with 3", 2.5" co-leaders.
1328	E. property line	Norway Maple	2.5	3	4	over-topped, slight sweep	
1329	E. property line	Norway Maple	2.5	3	4	decay, damaged leader, twist in trunk	Forked at base with 2.5", 2" co-leaders.
1330	E. property line	American Elm	2.5	2	4	sweep, over-topped	
1331	E. property line	Black Walnut	7	3	4	suckering, damaged leader	
1332	E. property line	Mulberry	5	3	4	suckering, damaged leader, multiple leaders	Forked at 5' with 3", 3", 2" co-leaders.
1333	E. property line	Norway Maple	3	3	4	minor deadwood, damaged leader, twist in trunk	Forked at base with 2.5", 2.5" co-leaders.
1334	E. property line	Norway Maple	3	3	4	damaged leader, twist in trunk	Forked at 5' with a 2" co-leader.
1335	E. property line	Black Walnut	14	3	4	basal scar, weak crotch, slight sweep	Forked at 3' with a 1.5" co-leader.
1336	E. property line	Black Cherry	12	3	4	minor deadwood, suckering, slight lean	
1337	E. property line	Mulberry	4	3	4	minor deadwood, suckering, damaged leader, slight sweep	Forked at base with 4", 3", 3", 3" co-leaders.
1338	E. property line	Hackberry	4	3	4	double leader	
1339	E. property line	Mulberry	5	3	4	suckering, damaged leader, double leader	
1340	E. property line	Mulberry	4	3	4	suckering, damaged leader, slight lean, multiple leaders	
1341	E. property line	American Elm	4	3	3	damaged leader, thin crown	
1342	E. property line	American Elm	4	3	3	over-topped, damaged leader, slight lean	
1343	E. property line	Boxelder Maple	4	3	4	minor deadwood, suckering, twist in trunk, multiple leaders	Forked at 5' with 3", 3", 3" co-leaders.
1344	E. property line	Mulberry	4	3	4	weak crotch, suckering, damaged leader	Forked at 5' with 3", 2" co-leaders.
1345	E. property line	Boxelder Maple	2.5	3	4	damaged leader, slight sweep, double leader	
1346	E. property line	American Elm	4	3	4	weak crotch, suckering, damaged leader, double leader	
1347	E. property line	Boxelder Maple	3	3	4	suckering, over-topped, damaged leader, slight lean	Forked at base with a 3" co-leader.
1348	E. property line	Boxelder Maple	3.5	3	4	minor deadwood, suckering, damaged leader, slight lean	Forked at base with a 2.5" co-leader.
1349	E. property line	American Elm	6	3	4	weak crotch, damaged leader, multiple leaders	
1350	E. property line	Ulmus americana	3.5	3	4	damaged leader, thin crown	Forked at base with 3.5", 2.5" co-leaders.
1351	N.E. property corner	American Elm	6	3	4	weak crotch, one sided, twist in trunk	Forked at 1' with a 6" co-leader.
1352		Ulmus americana	7	3	4	one sided, poison ivy, lower branches shaded out	
1353		Ulmus americana	8	3	4	one sided, slight lean	
1354		White Spruce	18	4	4	minor deadwood, poison ivy, lower branches shaded out	
1355		Ulmus americana	6	3	4	one sided, slight lean, double leader	
1356		Ulmus americana	5	4	4	minor deadwood, sparse foliage, multiple leaders	
1357		Ulmus americana	7	3	3	minor deadwood, weak crotch	
1358		Malus spp.	5	3	3	broken limbs, weak crotch	Forked at 3' with 7", 4", 4", 3" co-leaders.
1359		Ulmus americana	3	3	3	broken limbs, minor deadwood, basal scar, decay, top broken	Forked at 3.5' with 5", 4", 4" co-leaders.
1360		Ulmus americana	22	4	5	broken limbs, minor deadwood, basal scar, decay, top broken	
1361		Ulmus americana	32	3	3	minor deadwood, epicormics, multiple leaders	
1362		Ulmus americana	35	6	3	minor deadwood	Dead.
1363		Ulmus americana	10	3	3	minor deadwood	
1364		Ulmus americana	14	4	4	construction impact, broken limbs, weak crotch, compaction	Forked at 2' and 3' with 11", 10", 9" co-leaders.
1365		Ulmus americana	21	4	4	construction impact, broken limbs, basal scar, trunk scar,	1/2 of crown is split off.
1366		Ulmus americana	24	3	3	broken limbs, weak crotch, compaction, multiple leaders	
1367		Ulmus americana	30	3	3	minor deadwood, weak crotch, multiple leaders	
1368		Ulmus americana	3	3	3	over-topped	Forked at base with 2", 1.5" co-leaders.
1369		Ulmus americana	15	3	4	wine infested, slight sweep	
1370		Ulmus americana	20	3	4	suckering, slight sweep, double leader	
1371		Ulmus americana	12	3	4	sweep, over-topped, double leader	
1372		Ulmus americana	27	4	4	heavy deadwood, suckering, over-topped, dieback, slight sweep	
1373		Ulmus americana	12	3	4	suckering, over-topped, slight sweep	
1374		Ulmus americana	16	3	4	one sided, sweep, suckering	
1375		Ulmus americana	25	3	3	heavy deadwood, weak crotch, multiple leaders	
1376		Ulmus americana	12	3	3	construction impact, weak crotch, one sided, double leader	
1377		Ulmus americana	25	3	4	one sided, gridding root, over-topped, multiple leaders	
1378		Ulmus americana	16	3	4	minor deadwood, excessive lean	
1379		Ulmus americana	38	3	2	heavy deadwood, epicormics	
1380		Ulmus americana	17	5	4	sparse foliage, excessive lean, suckering, emerald ash borer	
1381		Ulmus americana	9	4	4	basal decay, suckering, slight lean, slight sweep	Forked at base with a 3" co-leader.
1382		Ulmus americana	8	3	4	weak crotch, one sided, suckering, over-topped, slight sweep	Forked at 1.5' with 6", 5" co-leaders.
1383		Ulmus americana	23	3	3	trunk scar, multiple leaders	
1384		Ulmus americana	4	3	4	one sided, over-topped, slight sweep	Forked at 1' with a 3" co-leader.
1385		Ulmus americana	4	2	4	sweep, over-topped	
1386		Ulmus americana	2.5	2	4	weak crotch, suckering	
1387		Ulmus americana	3	2	3	weak crotch, suckering	
1388		Ulmus americana	3.5	2	3	slight lean	
1389		Ulmus americana	2.25	3	4	suckering, slight sweep	Forked at base with a 2" co-leader.
1390		Ulmus americana	6	3	4	sweep, over-topped	
1391		Ulmus americana	8	3	3	double leader	
1392		Ulmus americana	6	3	4	one sided, over-topped	Forked at 3' with a 2.5" co-leader.
1393		Ulmus americana	2.75	3	4	weak crotch, one sided	Forked at 3.5' with a 4" co-leader.
1394		Ulmus americana	5	3	3	minor deadwood, weak crotch, double leader	
1395		Ulmus americana	9	3	4	over-topped, twist in trunk	
1396		Ulmus americana	8	3	3	weak crotch, thin crown	

1395	Hackberry	Celtis occidentalis	6	2	4	sweep, over-topped	
1396	Siberian Elm	Ulmus pumila	8	3	3	one sided, thin crown	
1397	Green Ash	Fraxinus pennsylvanica	2	2	4	sweep, over-topped	
1398	American Elm	Ulmus americana	2.5	2	4	one sided, over-topped, slight sweep	
1399	Dogwood	Cornus spp.	4	4	4	basal decay, weak crotch, over-topped	Forked at base with 3", 3", 2", 2" co-leaders.
1400	Sweep	Cornus spp.	4	3	4	sweep, over-topped	Forked at base with 3", 2" co-leaders.
1682	Black Walnut	Juglans nigra	15	2	3	weak crotch, multiple leaders	
1683	Eastern red cedar	Juniperus virginiana	5	3	4	sparse foliage, one sided, over-topped	
1684	Eastern red cedar	Juniperus virginiana	4	4	4	basal scar, one sided, over-topped, twist in trunk	
1685	Eastern red cedar	Juniperus virginiana	7	3	4	one sided	
1686	Colorado Blue Spruce	Picea pungens	13	6	4		Dead.
1687	Eastern red cedar	Juniperus virginiana	4.5	3	4	over-topped	
1688	Mulberry	Morus spp.	2.75	2	4	weak crotch, over-topped, slight sweep	Forked at 3.5' with a 2" co-leader.
1689	Silver Maple	Acer saccharinum	44	5	3	heavy deadwood, dieback, multiple leaders	
1690	Mulberry	Morus spp.	3.5	3	4	gridding root, slight sweep, multiple leaders	
1691	Paper Birch	Betula papyrifera	4	6	4		Dead. Forked at base with 4", 4", 3" co-leaders.
1692	Paper Birch	Betula papyrifera	4	6	3		Dead. Forked at base with 3", 3", 3" co-leaders.

PRESERVATION SUMMARY
THE FOLLOWING EXISTING TREES SHALL BE REMOVED (DUE TO CONFLICTS WITH LAND DEVELOPMENT & UTILITY LOCATIONS):

- (36) EXISTING TREES / 27.25 CALIPER INCHES TOTAL SHALL BE REMOVED:
- #1335, 1336, 1337, 1338, 1339, 1340, 1341, 1342, 1343, 1344, 1345, 1346, 1347, 1348, 1349, 1350, 1351, 1352, 1353, 1354, 1355, 1356, 1357
- #1367, 1368, 1369, 1370, 1371
- #1682, 1683, 1684, 1685, 1686, 1687, 1688
- #1690

NOTE!
EXISTING TREES ON INDIVIDUAL LOTS WILL BE REVIEWED FOR TREE PRESERVATION & REMOVAL AT TIME OF PERMIT APPLICATION FOR EACH LOT.