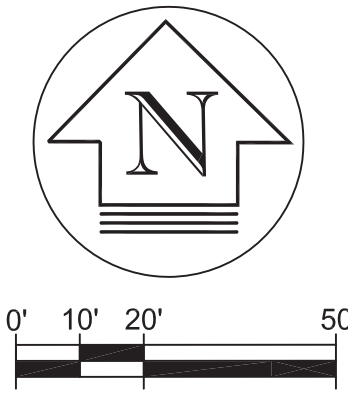


UNITED SURVEY SERVICE, LLC
 CONSTRUCTION AND LAND SURVEYORS
 2100 N. 15TH AVENUE, SUITE C, MELROSE PARK, IL 60160 - 1017
 TEL.: (847) 299 - 1010 FAX : (847) 299 - 5887
 E-MAIL: USURVEY@USANDCS.COM

ALTA / ACSM LAND TITLE SURVEY



ITEM X 28.
 GRANT OF EASEMENT RECORDED MARCH 11, 1986 AS DOCUMENT 86096714 MADE BY AMERICAN NATIONAL BANK AND TRUST COMPANY OF CHICAGO, AS TRUSTEE UNDER TRUST AGREEMENT DATED MARCH 28, 1985 AND KNOWN AS TRUST NUMBER 83922 TO THE COMMONWEALTH EDISON COMPANY AND THE ILLINOIS BELL TELEPHONE COMPANY, ITS SUCCESSORS AND ASSIGNS, TO CONSTRUCT, OPERATE, MAINTAIN, RENEW, RELOCATE, AND REMOVE POLES, WIRES, CABLES, CONDUITS, MANHOLES, TRANSFORMERS AND OTHER FACILITIES, USED IN CONNECTION WITH OVERHEAD AND UNDERGROUND TRANSMISSION AND DISTRIBUTION OF ELECTRICITY, SOUNDS, AND SIGNALS, TOGETHER WITH RIGHT OF ACCESS THERETO, GIVEN IN, OVER, UNDER, ACROSS, ALONG AND UPON A 10 FEET STRIP DEPICTED ON SKETCH MARKED EXHIBIT "A" ATTACHED TO SAID GRANT.
(AFFECTS LOTS 25, 26, AND 27)

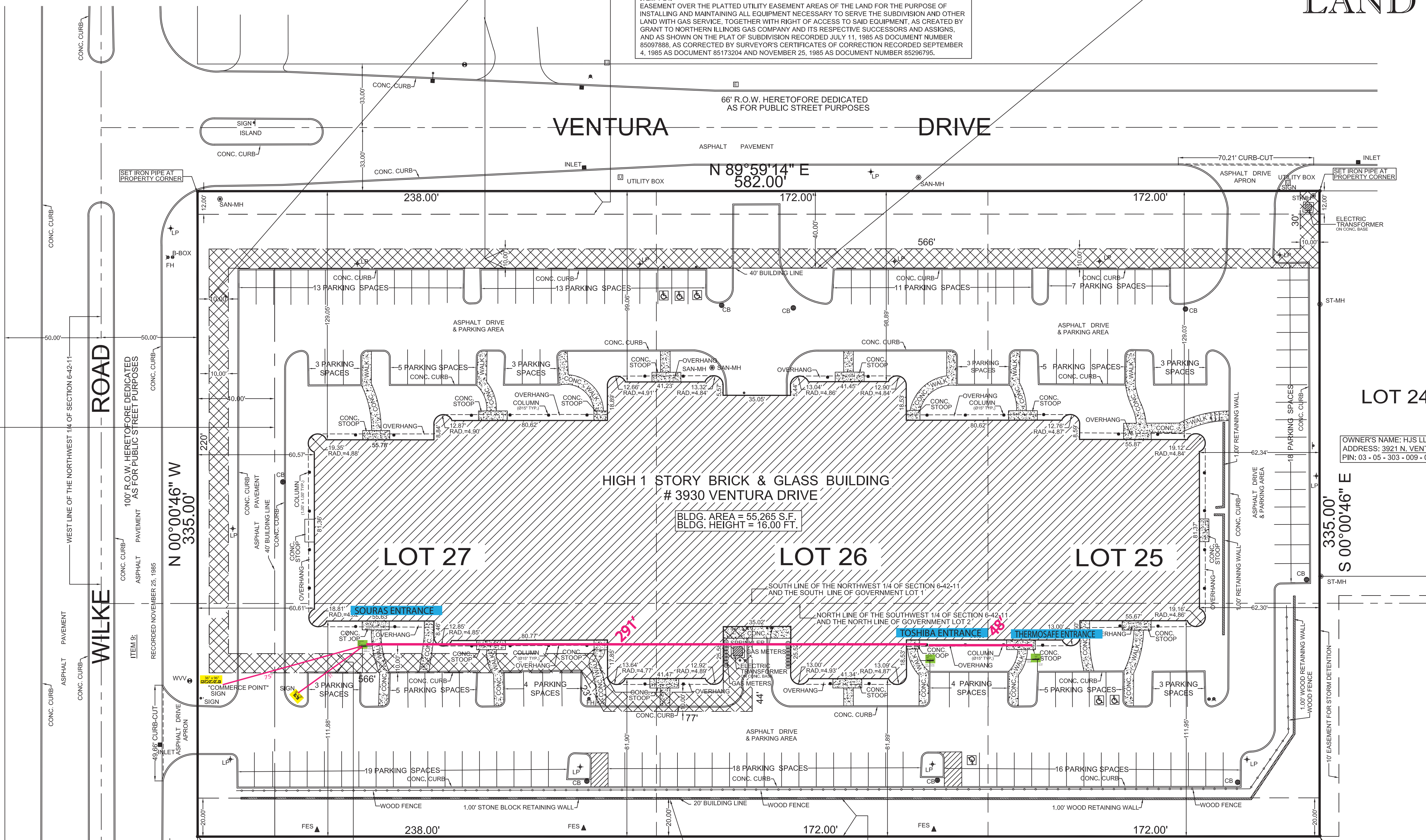
ITEM Q 21.
 UTILITY EASEMENT AS SHOWN ON PLAT OF 53 PARK OF COMMERCE SUBDIVISION RECORDED JULY 11, 1985 AS DOCUMENT NUMBER 85097888, AS AMENDED BY DOCUMENT 85296795, AS CORRECTED BY SURVEYOR'S CERTIFICATES OF CORRECTION RECORDED SEPTEMBER 4, 1985 AS DOCUMENT 85173204 AND NOVEMBER 25, 1985 AS DOCUMENT NUMBER 85296795, OVER THE LAND DESCRIBED AS FOLLOWS:
12 FEET OVER THE NORTH LINE OF LOTS 25, 26 AND 27.

ITEM S 23.
 EASEMENT OVER THE PLATTED UTILITY EASEMENT AREAS OF THE LAND FOR THE PURPOSE OF INSTALLING AND MAINTAINING ALL EQUIPMENT NECESSARY TO SERVE THE SUBDIVISION AND OTHER LAND WITH TELEPHONE AND ELECTRICAL SERVICE, TOGETHER WITH RIGHT TO OVERHANG AERIAL SERVICE WIRES AND THE RIGHT OF ACCESS TO SUCH WIRES AS CREATED BY GRANT TO ILLINOIS BELL TELEPHONE COMPANY AND THE COMMONWEALTH EDISON COMPANY AND CABLE TELEVISION GRANTEEES AND THEIR RESPECTIVE SUCCESSORS AND ASSIGNS AND AS SHOWN ON THE PLAT OF SUBDIVISION RECORDED JULY 11, 1985 AS DOCUMENT NUMBER 85097888, AS CORRECTED BY SURVEYOR'S CERTIFICATES OF CORRECTION RECORDED SEPTEMBER 4, 1985 AS DOCUMENT 85173204 AND NOVEMBER 25, 1985 AS DOCUMENT NUMBER 85296795.

ITEM T 24.
 EASEMENT OVER THE PLATTED UTILITY EASEMENT AREAS OF THE LAND FOR THE PURPOSE OF INSTALLING AND MAINTAINING ALL EQUIPMENT NECESSARY TO SERVE THE SUBDIVISION AND OTHER LAND WITH GAS SERVICE, TOGETHER WITH RIGHT OF ACCESS TO SAID EQUIPMENT, AS CREATED BY GRANT TO NORTHERN ILLINOIS GAS COMPANY AND ITS RESPECTIVE SUCCESSORS AND ASSIGNS, AND AS SHOWN ON THE PLAT OF SUBDIVISION RECORDED JULY 11, 1985 AS DOCUMENT NUMBER 85097888, AS CORRECTED BY SURVEYOR'S CERTIFICATES OF CORRECTION RECORDED SEPTEMBER 4, 1985 AS DOCUMENT 85173204 AND NOVEMBER 25, 1985 AS DOCUMENT NUMBER 85296795.

ITEM R 22.
 BUILDING LINE AS SHOWN ON PLAT OF 53 PARK OF COMMERCE SUBDIVISION RECORDED JULY 11, 1985 AS DOCUMENT NUMBER 85097888, AS CORRECTED BY SURVEYOR'S CERTIFICATES OF CORRECTION RECORDED SEPTEMBER 4, 1985 AS DOCUMENT 85173204 AND NOVEMBER 25, 1985 AS DOCUMENT NUMBER 85296795, OVER THE FOLLOWING DESCRIBED LAND:
40 FEET OVER THE NORTH LINE AND 20 FEET ALONG THE SOUTH LINE OF LOTS 25 AND 26.
40 FEET OVER THE NORTH AND WEST LINES AND 20 FEET ALONG THE SOUTH LINE OF LOT 27.

ITEM S 23.
 BUILDING LINE AS SHOWN ON PLAT OF 53 PARK OF COMMERCE SUBDIVISION RECORDED JULY 11, 1985 AS DOCUMENT NUMBER 85097888, AS CORRECTED BY SURVEYOR'S CERTIFICATES OF CORRECTION RECORDED SEPTEMBER 4, 1985 AS DOCUMENT 85173204 AND NOVEMBER 25, 1985 AS DOCUMENT NUMBER 85296795, OVER THE FOLLOWING DESCRIBED LAND:
40 FEET OVER THE NORTH LINE AND 20 FEET ALONG THE SOUTH LINE OF LOTS 25 AND 26.
40 FEET OVER THE NORTH AND WEST LINES AND 20 FEET ALONG THE SOUTH LINE OF LOT 27.



LOT 24
 OWNER'S NAME: HJS LLC
 ADDRESS: 3921 N. VENTURA DRIVE, ARLINGTON HEIGHTS
 PIN: 03 - 05 - 303 - 009 - 0000

OWNER'S NAME: COMMERCE POINT
 ADDRESS: 3732 N. VENTURA DRIVE, ARLINGTON HEIGHTS
 PIN: 03 - 05 - 303 - 013 - 0000

LOT C
 (OPEN SPACE)

- Scale: 1" = 30 feet
- existing signage
 - proposed signage
 - distance between signs
 - business entrance

ITEM X 28.
 GRANT OF EASEMENT RECORDED MARCH 11, 1986 AS DOCUMENT 86096714 MADE BY AMERICAN NATIONAL BANK AND TRUST COMPANY OF CHICAGO, AS TRUSTEE UNDER TRUST AGREEMENT DATED MARCH 28, 1985 AND KNOWN AS TRUST NUMBER 83922 TO THE COMMONWEALTH EDISON COMPANY AND THE ILLINOIS BELL TELEPHONE COMPANY, ITS SUCCESSORS AND ASSIGNS, TO CONSTRUCT, OPERATE, MAINTAIN, RENEW, RELOCATE, AND REMOVE POLES, WIRES, CABLES, CONDUITS, MANHOLES, TRANSFORMERS AND OTHER FACILITIES, USED IN CONNECTION WITH OVERHEAD AND UNDERGROUND TRANSMISSION AND DISTRIBUTION OF ELECTRICITY, SOUNDS, AND SIGNALS, TOGETHER WITH RIGHT OF ACCESS THERETO, GIVEN IN, OVER, UNDER, ACROSS, ALONG AND UPON A 10 FEET STRIP DEPICTED ON SKETCH MARKED EXHIBIT "A" ATTACHED TO SAID GRANT.
(AFFECTS LOTS 25, 26, AND 27)

ITEM P 20.
 STORM AND WATER DETENTION EASEMENT AS SHOWN ON PLAT OF 53 PARK COMMERCE SUBDIVISION RECORDED JULY 11, 1985 AS DOCUMENT NUMBER 85097888, AS CORRECTED BY SURVEYOR'S CERTIFICATES OF CORRECTION RECORDED SEPTEMBER 4, 1985 AS DOCUMENT 85173204 AND NOVEMBER 25, 1985 AS DOCUMENT NUMBER 85296795, OVER THE LAND DESCRIBED AS FOLLOWS:
20 FEET ALONG THE SOUTH LINE OF LOTS 25 THROUGH 27

ITEM U 25.
 A NON-EXCLUSIVE EASEMENT FOR STORM WATER DETENTION RESERVED AND GRANTED TO THE VILLAGE OF ARLINGTON HEIGHTS, ILLINOIS OVER "EASEMENT FOR STORM WATER DETENTION" AREAS ON THE PLAT, SAID EASEMENT TO BE FOR THE INSTALLATION AND MAINTENANCE OF THE RETENTION AND DETENTION SYSTEM REQUIRED FOR THE LAND SUBDIVIDED THEREIN. AFTER INSTALLATION OF SUCH SYSTEM, THE GRADE OF THE "EASEMENT FOR STORM WATER DETENTION" SHALL NOT BE ALTERED IN A MANNER THAT WOULD MATERIALLY INTERFERE WITH THE PROPER OPERATION AND MAINTENANCE THEREOF.

ITEM R 22.
 BUILDING LINE AS SHOWN ON PLAT OF 53 PARK OF COMMERCE SUBDIVISION RECORDED JULY 11, 1985 AS DOCUMENT NUMBER 85097888, AS CORRECTED BY SURVEYOR'S CERTIFICATES OF CORRECTION RECORDED SEPTEMBER 4, 1985 AS DOCUMENT 85173204 AND NOVEMBER 25, 1985 AS DOCUMENT NUMBER 85296795, OVER THE FOLLOWING DESCRIBED LAND:
40 FEET OVER THE NORTH LINE AND 20 FEET ALONG THE SOUTH LINE OF LOTS 25 AND 26.
40 FEET OVER THE NORTH AND WEST LINES AND 20 FEET ALONG THE SOUTH LINE OF LOT 27.

ORDERED BY: PREMISES GROUP, LLC	10/21/13	UPDATED
SCALE : 1" = 30'	06/22/06	REVISED
DATE : JANUARY 23, 2006	02/14/06	REVISED
FILE No.:	02/08/06	REVISED
2006 - 3423	DATE	REVISION

LEGEND	ABBREVIATIONS
	SAN-MH SANITARY MANHOLE
	ST-MH STORM MANHOLE
	CB CATCH BASIN
	INLET INLET
	WVV WATER VALVE VAULT
	FH FIRE HYDRANT
	B-BOX BUFFALO BOX
	FES FLARED END SECTION
	LP LIGHT POLE
	SIGN SIGN
	UTILITY BOX UTILITY BOX
	HANDICAP SPACE

3930 N. Ventura Drive Arlington Hts., IL 60005



www.signcentral.com

Round Lake Location

t: 847-543-7600
f: 847-543-7700
email: jennifer@signcentral.com
34039 N. Hainesville Road
Round Lake, IL 60047

Existing signs

Existing Building Elevations



1/4" = 1'

1/4" = 1'



1/4" = 1'

Other Tenant Spaces



SOARUS

Building
Elevations
with sign
Locations

1/4" = 1'



TOSHIBA

1/4" = 1'



THERMOSAFE

1/4" = 1'

3930 N. Ventura Drive Arlington Hts., IL 60005

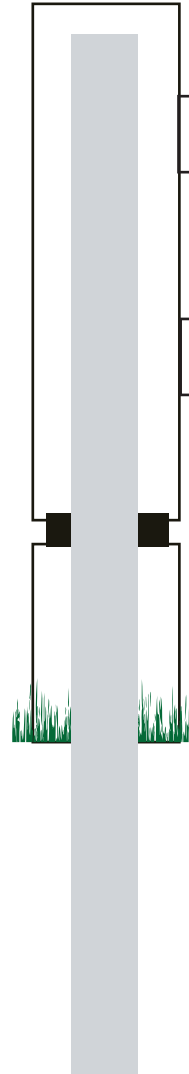
48"

8"



30"

12"



Non-Illuminated
Aluminum Sign

48" wide

30" tall

8" depth

12" x 48" base

Plastic Letters Mounted to Face
4" Pole

Installed into ground 30"



www.signcentral.com

Round Lake Location

t: 847-543-7600

f: 847-543-7700

email: jennifer@signcentral.com

34039 N. Hainesville Road

Round Lake, IL 60047

Proposed Sign

Material of Sign

The material for the Background is Aluminum
Painted Duradonic Bronze

48"

The material for the Letters are
Acrylic 3/16" thick

SOARUS

MSIT TECHNOLOGY

30"

12"





These are the surrounding building across the street and behind. Most of these offices are vacant and others are more than 250' away from property.

