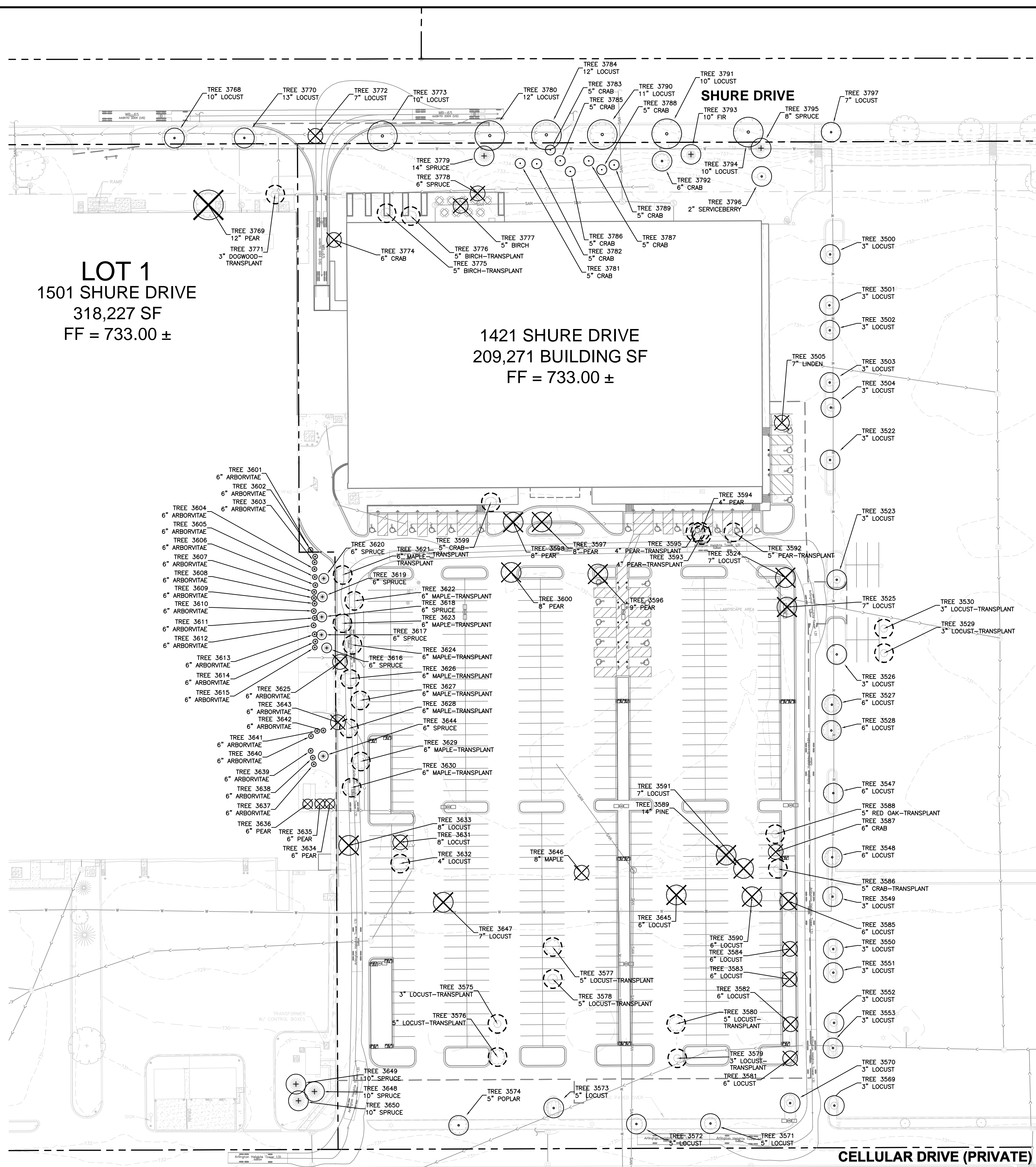
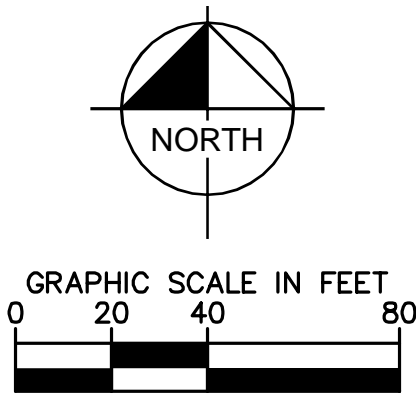


Drawing name: K:\GIS\LDEV\168193001 Torburn Partners - Arlington Heights\2 Design\CADD\PlanSheet\Plan L1.1 - L1.3 PRESERVATION PLAN.dwg L1.1 May 14, 2015 3:26pm by tom.cunkle
This document, together with the concepts and designs presented herein, as an instrument of service, is intended only for the specific purpose and client for which it was prepared. Reuse or and improper reliance on this document without written authorization and adaptation by Kimley-Horn and Associates, Inc. shall be without liability to Kimley-Horn and Associates, Inc.



Legend

- Existing Evergreen
- Existing Deciduous
- Tree to be Removed
- Tree to be Transplanted



NORTHWEST CROSSINGS 1421 W. SHURE DRIVE ARLINGTON HEIGHTS, IL 60004	TREE PRESERVATION PLAN - EAST	TORBURN PARTNERS 1033 SKOKIE BOULEVARD, SUITE 150 NORTHBROOK, IL 60062	Kimley»Horn © 2015 KIMLEY-HORN AND ASSOCIATES, INC. 1001 WARRENVILLE ROAD, SUITE 350, PHOENIX, AZ 85028 WWW.KIMLEY-HORN.COM	SCALE: AS NOTED	DESIGNED BY: LEN	DRAWN BY: LJ	CHECKED BY: DMA	REVISIONS No. DATE BY
ORIGINAL ISSUE: 5/14/2015 KHA PROJECT NO. 168193001 SHEET NUMBER				L1.1				

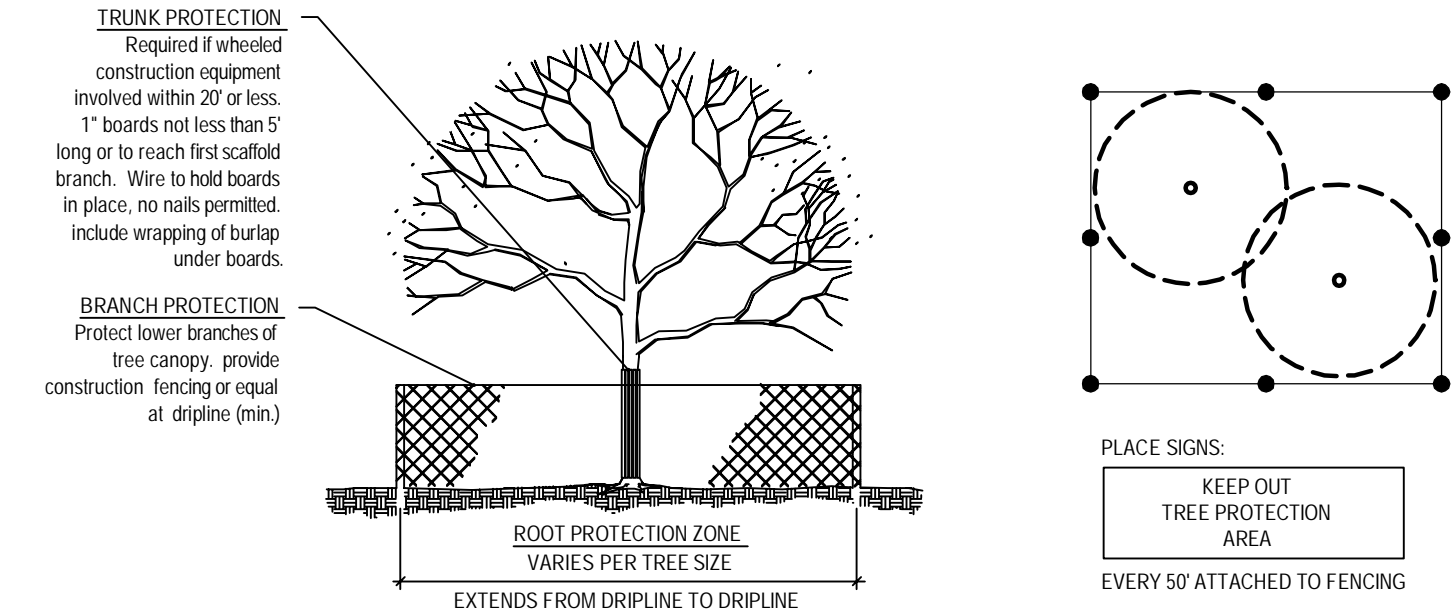
Drawing name: K:\GIS\LDEV\168193001_Torburn_Partners - Arlington Heights\2_Design\CADD\PlanSheets\Plan_Engineering\L1-L1.3_PRESERVATION_PLANNING_L1.3_May 14, 2015_3:28pm by tom.cundie
This document, together with the concepts and designs presented herein, as an instrument of service, is intended only for the specific purpose and client for which it was prepared. Reuse of and improper reliance on this document without written authorization and adaptation by Kimley-Horn and Associates, Inc. shall be without liability to Kimley-Horn and Associates, Inc.

East Area

PLANT LIST

TAG #	SPECIES	COMMON NAME	DBH	FORM	TYPE	CONDITION	STATUS
3634	Pyrus calleryana	Bradford Pear	6		Canopy	Fair	Remove
3500	Gleditsia triacanthos	Honeylocust	3		Canopy	Good	Remain
3501	Gleditsia triacanthos	Honeylocust	3		Canopy	Good	Remain
3502	Gleditsia triacanthos	Honeylocust	3		Canopy	Good	Remain
3503	Gleditsia triacanthos	Honeylocust	3		Canopy	Good	Remain
3504	Gleditsia triacanthos	Honeylocust	3		Canopy	Good	Remain
3505	Tilia cordata	Little-Leaf Linden	7		Canopy	Poor	Remove
3522	Gleditsia triacanthos	Honeylocust	3		Canopy	Good	Remain
3523	Gleditsia triacanthos	Honeylocust	3		Canopy	Good	Remove
3524	Gleditsia triacanthos	Honeylocust	7		Canopy	Good	Remove
3525	Gleditsia triacanthos	Honeylocust	7		Canopy	Good	Remove
3526	Gleditsia triacanthos	Honeylocust	3		Canopy	Good	Remove
3527	Gleditsia triacanthos	Honeylocust	6		Canopy	Good	Remain
3528	Gleditsia triacanthos	Honeylocust	6		Canopy	Good	Remain
3529	Gleditsia triacanthos	Honeylocust	3		Canopy	Good	Transplant
3530	Gleditsia triacanthos	Honeylocust	3		Canopy	Good	Transplant
3547	Gleditsia triacanthos	Honeylocust	6		Canopy	Good	Remain
3548	Gleditsia triacanthos	Honeylocust	6		Canopy	Good	Remain
3549	Gleditsia triacanthos	Honeylocust	3		Canopy	Good	Remove
3550	Gleditsia triacanthos	Honeylocust	3		Canopy	Good	Remain
3551	Gleditsia triacanthos	Honeylocust	3		Canopy	Good	Remain
3552	Gleditsia triacanthos	Honeylocust	3		Canopy	Good	Remain
3553	Gleditsia triacanthos	Honeylocust	3		Canopy	Good	Remain
3569	Gleditsia triacanthos	Honeylocust	3		Canopy	Good	Remain
3570	Gleditsia triacanthos	Honeylocust	3		Canopy	Good	Remain
3571	Gleditsia triacanthos	Honeylocust	5		Canopy	Good	Remain
3572	Gleditsia triacanthos	Honeylocust	5		Canopy	Good	Remain
3573	Gleditsia triacanthos	Honeylocust	5		Canopy	Good	Remain
3574	Populus alba	White Poplar	5		Canopy	Poor	Remain
3575	Gleditsia triacanthos	Honeylocust	3		Canopy	Good	Transplant
3576	Gleditsia triacanthos	Honeylocust	5		Canopy	Good	Transplant
3577	Gleditsia triacanthos	Honeylocust	5		Canopy	Good	Transplant
3578	Gleditsia triacanthos	Honeylocust	5		Canopy	Good	Transplant
3579	Gleditsia triacanthos	Honeylocust	3		Canopy	Good	Transplant
3580	Gleditsia triacanthos	Honeylocust	5		Canopy	Good	Transplant
3581	Gleditsia triacanthos	Honeylocust	6		Canopy	Good	Remove
3582	Gleditsia triacanthos	Honeylocust	6		Canopy	Good	Remove
3583	Gleditsia triacanthos	Honeylocust	6		Canopy	Good	Remove
3584	Gleditsia triacanthos	Honeylocust	6		Canopy	Good	Remove
3585	Gleditsia triacanthos	Honeylocust	6		Canopy	Good	Remove
3586	Malus	Crabapple	5	Multi-Stem	Ornamental	Good	Transplant
3587	Malus	Crabapple	6	Multi-Stem	Ornamental	Good	Remove
3588	Quercus rubra	Red Oak	5		Canopy	Good	Transplant
3589	Pinus strobus	Eastern White Pine	14		Evergreen	Good	Remove
3590	Gleditsia triacanthos	Honeylocust	6		Canopy	Good	Remove
3591	Gleditsia triacanthos	Honeylocust	7		Canopy	Good	Remove
3592	Pyrus calleryana	Bradford Pear	5		Canopy	Good	Transplant
3593	Pyrus calleryana	Bradford Pear	4	Multi-Stem	Ornamental	Fair	Transplant
3594	Pyrus calleryana	Bradford Pear	4	Multi-Stem	Ornamental	Fair	Transplant
3595	Pyrus calleryana	Bradford Pear	4	Multi-Stem	Ornamental	Fair	Transplant
3596	Pyrus calleryana	Bradford Pear	9		Canopy	Good	Remove
3597	Pyrus calleryana	Bradford Pear	8		Canopy	Good	Remove
3598	Pyrus calleryana	Bradford Pear	8		Canopy	Good	Remove
3599	Malus	Crabapple	5	Multi-Stem	Ornamental	Good	Transplant
3600	Pyrus calleryana	Bradford Pear	8		Canopy	Good	Remove
3601	Thuja occidentalis 'Techny'	Mission Arborvitae	6		Evergreen	Excellent	Remain
3602	Thuja occidentalis 'Techny'	Mission Arborvitae	6		Evergreen	Excellent	Remain
3603	Thuja occidentalis 'Techny'	Mission Arborvitae	6		Evergreen	Excellent	Remain
3604	Thuja occidentalis 'Techny'	Mission Arborvitae	6		Evergreen	Excellent	Remain
3605	Thuja occidentalis 'Techny'	Mission Arborvitae	6		Evergreen	Excellent	Remain
3606	Thuja occidentalis 'Techny'	Mission Arborvitae	6		Evergreen	Excellent	Remain
3607	Thuja occidentalis 'Techny'	Mission Arborvitae	6		Evergreen	Excellent	Remain
3608	Thuja occidentalis 'Techny'	Mission Arborvitae	6		Evergreen	Excellent	Remain
3609	Thuja occidentalis 'Techny'	Mission Arborvitae	6		Evergreen	Excellent	Remain
3610	Thuja occidentalis 'Techny'	Mission Arborvitae	6		Evergreen	Excellent	Remain
3611	Thuja occidentalis 'Techny'	Mission Arborvitae	6		Evergreen	Excellent	Remain
3612	Thuja occidentalis 'Techny'	Mission Arborvitae	6		Evergreen	Excellent	Remain
3613	Thuja occidentalis 'Techny'	Mission Arborvitae	6		Evergreen	Excellent	Remain
3614	Thuja occidentalis 'Techny'	Mission Arborvitae	6		Evergreen	Excellent	Remain
3615	Thuja occidentalis 'Techny'	Mission Arborvitae	6		Evergreen	Excellent	Remain
3616	Picea pungens	Colorado Green Spruce	6		Evergreen	Excellent	Remain
3617	Picea pungens	Colorado Green Spruce	6		Evergreen	Excellent	Remain
3618	Picea pungens	Colorado Green Spruce	6		Evergreen	Excellent	Remain

3619	Picea pungens	Colorado Green Spruce	6		Evergreen	Excellent	Remain
3620	Picea pungens	Colorado Green Spruce	6		Evergreen	Excellent	Remain
3621	Acer x freemanii 'Jeffersred'	Autumn Blaze Maple	6		Canopy	Good	Transplant
3622	Acer x freemanii 'Jeffersred'	Autumn Blaze Maple	6		Canopy	Good	Transplant
3623	Acer x freemanii 'Jeffersred'	Autumn Blaze Maple	6		Canopy	Good	Transplant
3624	Acer x freemanii 'Jeffersred'	Autumn Blaze Maple	6		Canopy	Good	Transplant
3625	Thuja occidentalis 'Techny'	Mission Arborvitae	6		Evergreen	Excellent	Remove
3626	Acer x freemanii 'Jeffersred'	Autumn Blaze Maple	6		Canopy	Good	Transplant
3627	Acer x freemanii 'Jeffersred'	Autumn Blaze Maple	6		Canopy	Good	Transplant
3628	Acer x freemanii 'Jeffersred'	Autumn Blaze Maple	6		Canopy	Good	Transplant
3629	Acer x freemanii 'Jeffersred'	Autumn Blaze Maple	6		Canopy	Good	Transplant
3630	Acer x freemanii 'Jeffersred'	Autumn Blaze Maple	6		Canopy	Good	Transplant
3631	Gleditsia triacanthos	Honeylocust	8		Canopy	Good	Remove
3632	Gleditsia triacanthos	Honeylocust	4		Canopy	Good	Transplant
3633	Gleditsia triacanthos	Honeylocust	8		Canopy	Good	Remove
3635	Pyrus calleryana	Bradford Pear	6	Multi-Stem	Ornamental	Fair	Remove
3634	Pyrus calleryana	Bradford Pear	6	Multi-Stem	Ornamental	Fair	Remove
3636	Pyrus calleryana	Bradford Pear	6	Multi-Stem	Ornamental	Fair	Remove
3637	Thuja occidentalis 'Techny'	Mission Arborvitae	6		Evergreen	Excellent	Remain
3638	Thuja occidentalis 'Techny'	Mission Arborvitae	6		Evergreen	Excellent	Remain
3639	Thuja occidentalis 'Techny'	Mission Arborvitae	6		Evergreen	Excellent	Remain
3640	Thuja occidentalis 'Techny'	Mission Arborvitae	6		Evergreen	Excellent	Remain
3641	Thuja occidentalis 'Techny'	Mission Arborvitae	6		Evergreen	Excellent	Remain
3642	Thuja occidentalis 'Techny'	Mission Arborvitae	6		Evergreen	Excellent	Remain
3643	Thuja occidentalis 'Techny'	Mission Arborvitae	6		Evergreen	Excellent	Remain
3644	Picea pungens	Colorado Green Spruce	6		Evergreen	Good	Remain
3645	Gleditsia triacanthos	Honeylocust	6		Canopy	Good	Remove
3646	Acer x freemanii 'Jeffersred'	Autumn Blaze Maple	8		Canopy	Good	Remove
3647	Gleditsia triacanthos	HoneyLocust	7		Canopy	Good	Remove
3648	Picea pungens	Colorado Green Spruce	10		Evergreen	Good	Remain
3649	Picea pungens	Colorado Green Spruce	10		Evergreen	Good	Remain
3650	Picea pungens	Colorado Green Spruce	10		Evergreen	Good	Remain
3768	Gleditsia triacanthos	Honeylocust	10		Canopy	Good	Remain
3769	Pyrus calleryana	Bradford Pear	12		Canopy	Good	Remove
3770	Gleditsia triacanthos	Honeylocust	13		Canopy	Good	Remain
3771	Cornus mas	Cornelian Cherry Dogwood	3	Multi-Stem	Ornamental	Good	Transplant
3772	Gleditsia triacanthos	Honeylocust	7		Canopy	Good	Remove
3773	Gleditsia triacanthos	Honeylocust	10		Canopy	Good	Remain
3774	Malus	Crabapple	6	Multi-Stem	Ornamental	Good	Remove
3775	Betula 'Madison'	White Satin Birch	5		Ornamental	Good	Transplant
3776	Betula 'Madison'	White Satin Birch	5		Ornamental	Good	Transplant
3777	Betula 'Madison'	White Satin Birch	5		Ornamental	Good	Remove
3778	Picea pungens 'Glaucia'	Colorado Blue Spruce	6		Evergreen	Good	Remove
3779	Picea pungens 'Glaucia'	Colorado Blue Spruce	14		Evergreen	Excellent	Remain
3780	Gleditsia triacanthos	Honeylocust	12		Canopy	Good	Remain
3781	Malus sargentii	Sargent Crabapple	5	Multi-Stem	Ornamental	Good	Remain
3782	Malus sargentii	Sargent Crabapple	5	Multi-Stem	Ornamental	Good	Remain
3783	Malus sargentii	Sargent Crabapple	5	Multi-Stem	Ornamental	Good	Remain
3784	Gleditsia triacanthos	Honeylocust	12		Canopy	Good	Remain
3785	Malus sargentii	Sargent Crabapple	5	Multi-Stem	Ornamental	Good	Remain
3786	Malus sargentii	Sargent Crabapple	5	Multi-Stem	Ornamental	Good	Remain
3787	Malus sargentii	Sargent Crabapple	5	Multi-Stem	Ornamental	Good	Remain
3788	Malus sargentii	Sargent Crabapple	5	Multi-Stem	Ornamental	Good	Remain
3789	Malus sargentii	Sargent Crabapple	5	Multi-Stem	Ornamental	Good	Remain
3790	Gleditsia triacanthos	Honeylocust	11		Canopy	Good	Remain
3791	Gleditsia triacanthos	Honeylocust	10		Canopy	Good	Remain
3792	Malus	Crabapple	6	Multi-Stem	Ornamental	Good	Remain
3793	Pseudotsuga menziesii	Douglas Fir	10		Evergreen	Fair	Remain
3794	Gleditsia triacanthos	Honeylocust	10		Canopy	Good	Remain
3795	Picea pungens	Colorado Green Spruce	8		Evergreen	Good	Remain
3796	Amelanchier x grandiflora	Downy Serviceberry	2	Multi-Stem	Ornamental	Excellent	Remain
3797	Gleditsia triacanthos	Honeylocust	7		Canopy	Good	Remain



TREE PROTECTION NOTES:

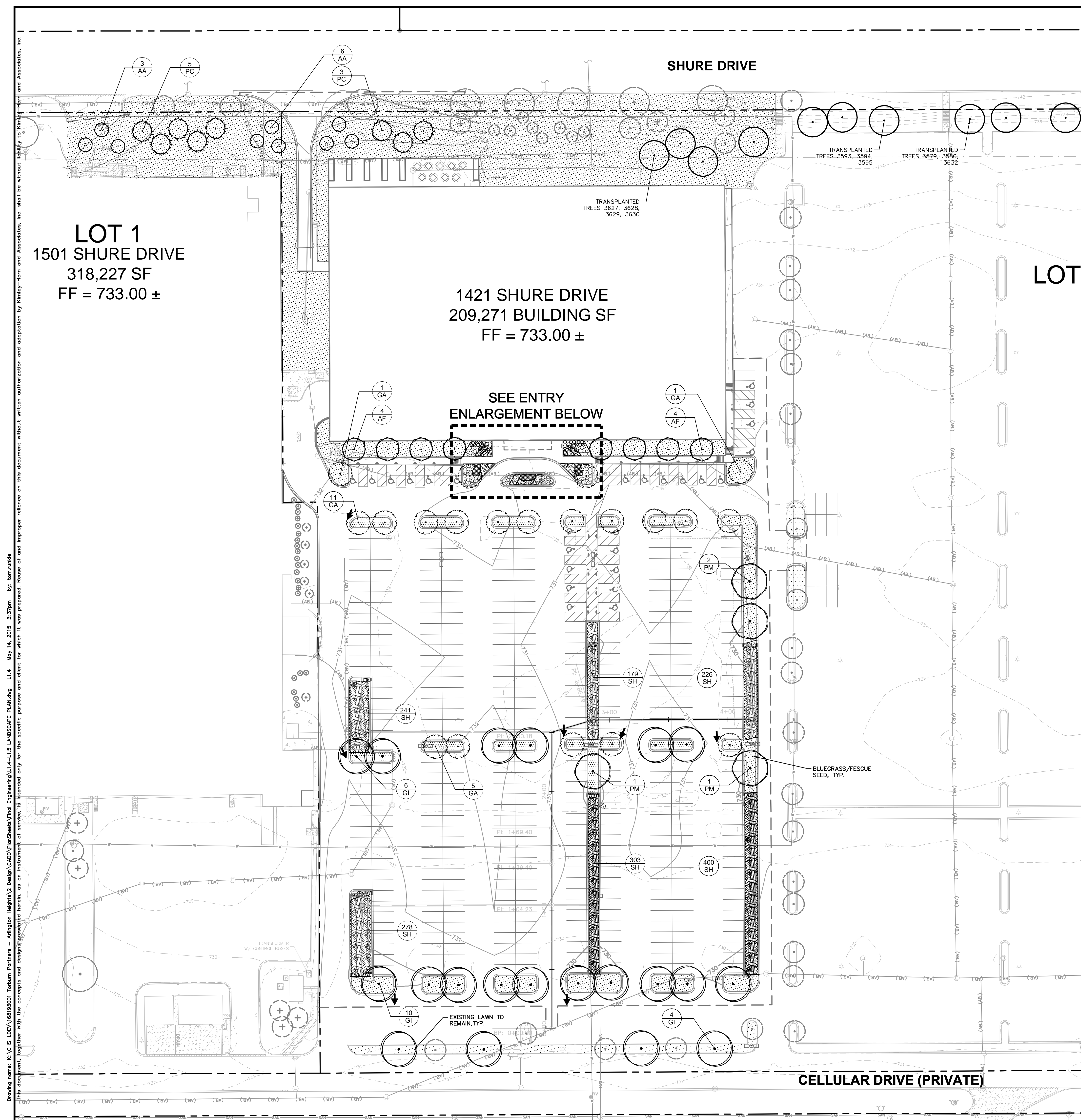
- All trees to be protected and preserved shall be per detail - grouping of more than one tree may occur.
- Trees to be protected and preserved shall be identified on the trunk with white survey tape.
- To prevent root smothering, crushed limestone, soil stockpiles, supplies, equipment or any other material shall not be placed or stored within the drip line or within 15 feet of a tree trunk, whichever is greater.
- Tree roots shall not be cut unless cutting is unavoidable.
- Trenches shall be hand dug within the drip line in areas where roots two inches in diameter and greater are present, or when in close proximity to low branching trees, whenever possible, roots two inches or greater in diameter shall be tunneled or bored under and shall be covered to prevent dehydration.
- When root cutting is unavoidable, a clean sharp cut shall be made; root cuts should be made back to a lateral root, whenever possible, roots should be cut between late fall and bud opening, when root energy supplies are high and conditions are least favorable for disease-causing agents. Exposed roots shall be covered immediately to prevent dehydration. Roots shall be covered with soil or burlap and kept moist.
- Watering of protected trees in which roots were cut shall be provided by the contractor.
- Auger tunneling rather than trenching should be used for utility placement within drip line.
- Fencing material shall encircle any tree or shrub whose outer drip line edge is within 20 feet of any construction activities.
- Fencing material shall be bright, contrasting color, durable, and a minimum of four feet in height.
- Fencing material shall be set at the drip line or 15 feet from tree trunk, whichever is greater, and maintained in an upright position throughout the duration of construction activities.
- In areas where a tree is in the construction zone and fencing within the drip line is not possible, two by six inch by eight foot long boards banded or wired around each trunk shall be provided as protection to adequately prevent scarring.
- Any grade changes (such as the removal of topsoil or addition of fill material) within the drip line should be avoided for existing trees to remain. Retaining walls and tree wells are acceptable only when constructed prior to grade change.
- Any relocated or replaced tree shall be guaranteed for up to one growing season. In the event a relocated or replaced tree dies or is in declining condition, the tree shall be replaced with 4" caliper tree.

TREE AND SHRUB PROTECTION

West Area

PLANT LIST

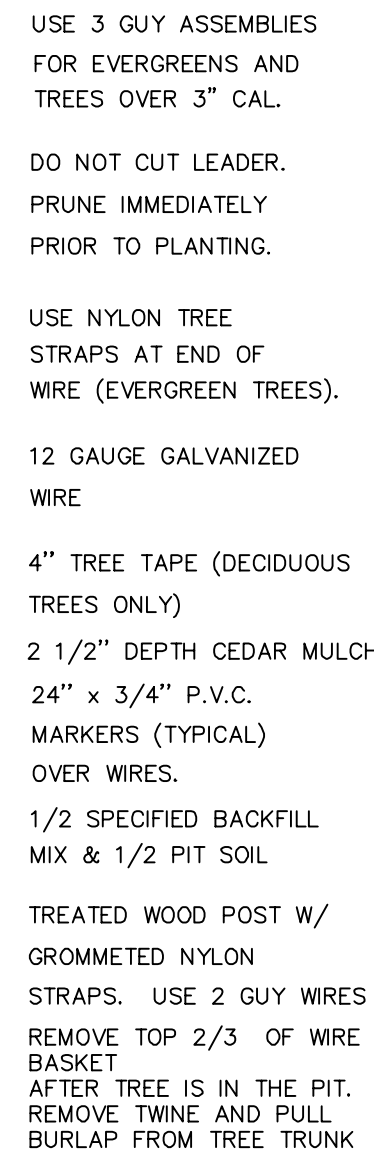
TAG #	SPECIES	COMMON NAME	DBH	FORM	TYPE	CONDITION	STATUS
3665	Gleditsia triacanthos	Honeylocust	3		Canopy	Good	Remain
3666	Pinus nigra	Austrian Pine	12		Evergreen	Good	Remain
3667	Gleditsia triacanthos	Honeylocust	3		Canopy	Good	Remain
3674	Gleditsia triacanthos	Honeylocust	3		Canopy	Good	Remain
3695	Malus	Crabapple	3	Multi-Stem	Ornamental	Good	Remain
3696	Pinus nigra	Austrian Pine	10		Evergreen	Good	Remain
3697	Pinus nigra	Austrian Pine	10		Evergreen	Good	Remain
3698	Pinus nigra	Austrian Pine	14		Evergreen	Good	Remain
3699	Acer platanoides	Norway Maple	18		Canopy	Good	Remain
3700	Picea pungens	Colorado Green Spruce	10		Evergreen	Good	Remain
3701	Picea pungens	Colorado Green Spruce	10		Evergreen	Good	Remain
3702	Malus	Crabapple	4	Multi-Stem	Ornamental	Good	Remain
3703	Acer platanoides	Norway Maple	18		Canopy	Good	Remain
3704	Gleditsia triacanthos	Honeylocust	3		Canopy	Good	Remain
3705	Gleditsia triacanthos	Honeylocust	3		Canopy	Good	Remain
3706	Gleditsia triacanthos	Honeylocust	3		Canopy	Good	Remain
3707	Gleditsia triacanthos	Honeylocust	3		Canopy	Good	Remain
3708	Gleditsia triacanthos	Honeylocust	3		Canopy	Good	Remain
3709	Gleditsia triacanthos	Honeylocust	3		Canopy	Good	Remain
3710	Gleditsia triacanthos	Honeylocust	3		Canopy	Good	Remain
3711	Gleditsia triacanthos	Honeylocust	3		Canopy	Good	Remain
3712	Gleditsia triacanthos	Honeylocust	4		Canopy	Good	Remain
3713	Gleditsia triacanthos	Honeylocust	3		Canopy	Good	Remain
3714	Gleditsia triacanthos	Honeylocust	3		Canopy	Good	Remain
3715	Gleditsia triacanthos	Honeylocust	3		Canopy	Good	Remain
3716	Gleditsia triacanthos	Honeylocust	3		Canopy	Good	Remain
3717	Gleditsia triacanthos	Honeylocust	3		Canopy	Good	Remain
3718	Gleditsia triacanthos	Honeylocust	3		Canopy	Good	Remain
3719	Gleditsia triacanthos	Honeylocust	3		Canopy	Good	Remain
3720	Gleditsia triacanthos	Honeylocust	3		Canopy	Good	Remain
3721	Gleditsia triacanthos	Honeylocust	3		Canopy	Good	Remain
3722	Gleditsia triacanthos	Honeylocust	3		Canopy	Good	Remain
3723	Gleditsia triacanthos	Honeylocust	3		Canopy	Good	Remain
3724	Gleditsia triacanthos	Honeylocust	3		Canopy	Good	Remain
3725	Gleditsia triacanthos	Honeylocust	4		Canopy	Good	Remain
3726	Gleditsia triacanthos	Honeylocust	6		Canopy	Good	Remain
3727	Pyrus calleryana	Bradford Pear	11		Canopy	Good	Remain
3728	Pyrus calleryana	Bradford Pear	9		Canopy	Poor	Remove
3729	Malus	Crabapple	5	Multi-Stem	Ornamental	Good	Transplant
3730	Gleditsia triacanthos	Honeylocust	8		Canopy	Good	Remove
3731	Malus	Crabapple	4	Multi-Stem	Ornamental	Good	Transplant
3732	Pinus nigra	Austrian Pine	15		Evergreen	Good	Remain
3733	Pinus nigra	Austrian Pine	14		Evergreen	Good	Remain
3734	Acer platanoides	Norway Maple	14		Canopy	Good	Remain
3735	Acer platanoides	Norway Maple	13		Canopy	Good	Remain
3736	Malus	Crabapple	10	Multi-Stem	Ornamental	Good	Remain
3737	Malus	Crabapple	7	Multi-Stem	Ornamental	Good	Remain
3738	Pinus nigra	Austrian Pine	14		Evergreen	Good	Remain
3739	Acer platanoides	Norway Maple	14		Canopy	Good	Remain
3740	Malus	Crabapple	5	Multi-Stem	Ornamental	Good	Remain
3741	Malus	Crabapple	5	Multi-Stem	Ornamental	Good	Remove
3742	Malus	Crabapple	5	Multi-Stem	Ornamental	Good	Remain
3743	Malus	Crabapple	3	Multi-Stem	Ornamental	Good	Remain
3744	Pyrus calleryana	Bradford Pear	4		Canopy	Good	Remove
3745	Acer x freemanii 'Jeffersred'	Autumn Blaze Maple	3		Canopy	Good	Remain
3746	Gleditsia triacanthos	Honeylocust	3		Canopy	Good	Remain
3747	Gleditsia triacanthos	Honeylocust	3		Canopy	Good	Remain
3748	Acer platanoides	Norway Maple	4		Canopy	Good	Remain
3749	Acer platanoides	Norway Maple	3.5		Canopy	Good	Remain
3750	Acer x freemanii 'Jeffersred'	Autumn Blaze Maple	6		Canopy	Fair	Remain
3751	Acer x freemanii 'Jeffersred'	Autumn Blaze Maple	6		Canopy	Poor	Remain
3752	Pinus nigra	Austrian Pine	12		Evergreen	Good	Remain
3753	Pinus nigra	Austrian Pine	13		Evergreen	Good	Remain
3754	Acer rubrum	Red Maple	10		Canopy	Fair	Remain
3755	Acer rubrum	Red Maple	9		Canopy	Fair	Remain
3756	Acer platanoides	Norway Maple	14		Canopy	Good	Remain
3757	Acer platanoides	Norway Maple	18		Canopy	Excellent	Remain
3758	Acer rubrum	Red Maple	12		Canopy	Good	Remain
3759	Acer platanoides	Norway Maple	18		Canopy	Excellent	Remain



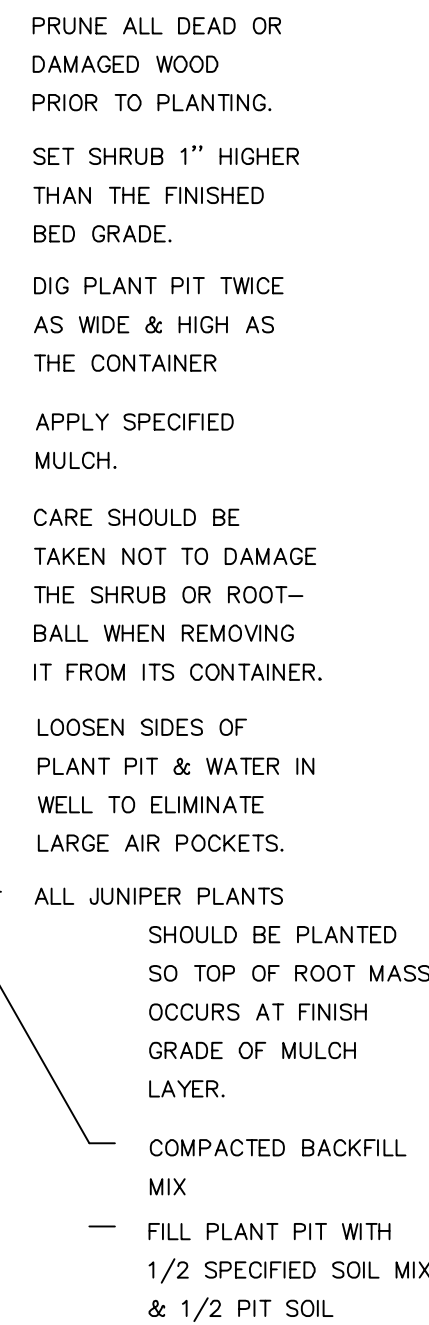
L1.4



PLAN PRW - THREE STAKES



TREE PLANTING

 SHRUB PLANTING

1. THE LANDSCAPE CONTRACTOR SHALL BE RESPONSIBLE FOR INSTALLING MATERIALS AND PLANTS SHOWN ON THE LANDSCAPE PLAN. THE CONTRACTOR IS RESPONSIBLE FOR THE COST TO REPAIR UTILITIES, ADJACENT LANDSCAPE, PUBLIC AND PRIVATE PROPERTY THAT MAY BE DAMAGED OR DISTURBED BY ANY OF ITS TRENCHES OR EXCAVATIONS, INCLUDING REINSTALLATION OR DURING THE SPECIFIED MAINTENANCE PERIOD. CALL FOR UTILITY LOCATIONS PRIOR TO ANY EXCAVATION.

2. THE CONTRACTOR SHALL REPORT ANY DISCREPANCY IN PLAN VS. FIELD CONDITIONS IMMEDIATELY TO THE LANDSCAPE ARCHITECT. NO CORRECTIONS WILL BE ALLOWED AFTER THE START OF CONSTRUCTION.

3. THE CONTRACTOR SHALL BE RESPONSIBLE FOR THE REPAIR OF ANY OF THEIR TRENCHES OR EXCAVATIONS THAT SETTLE.

4. ALL NURSERY STOCK SHALL BE WELL BRANCHED, HEALTHY, FULL, PRE-INOCULATED AND FERTILIZED. DECIDUOUS TREES SHALL BE FREE OF FRESH SCARS. TRUNKS WILL BE WRAPPED IF NECESSARY TO PREVENT SUN SCALD AND INSECT DAMAGE. THE CONTRACTOR SHALL CONTINUE TO CARE FOR ALL PLANT STOCK UNTIL IT IS FULLY ESTABLISHED.

5. ALL NURSERY STOCK SHALL BE GUARANTEED, BY THE CONTRACTOR, FOR ONE YEAR FROM DATE OF FINAL INSPECTION. CLEAN WASH EARTH WILL BE PROVIDED AND GRADED BY THE GENERAL CONTRACTOR UP TO 6 INCHES BELOW FINISHED GRADE.

6. TURF AREAS SHALL BE 18 INCHES DEEP WITH A MINIMUM OF 70% SOD GRASS. SOIL SHALL BE AMENDED WITH 25% SPHAGNUM PEATMOSS, 5X HUMUS AND 65X PULVERIZED SOIL FOR ALL SHRUB, ORNAMENTAL GRASSES, PERENNIAL AND ANNUAL BEDS.

7. SEED LIMIT LINES ARE APPROXIMATE. CONTRACTOR SHALL SEED ALL AREAS WHICH ARE DISTURBED BY GRADING WITH THE SPECIFIED SEED MIXES.

8. ALL SHRUB BEDS ARE TO BE MULCHED WITH MIN. 3" DEPTH AS WELL AS AROUND TREE RINGS, WITH DOUBLE SHREDDED HARDWOOD MULCH. A GROUND COVER AND PERENNIAL BEDS SHALL BE MULCHED WITH 2" DEEP LEAF MULCH. NO NEED FOR CURB OR FIBRIC COVERS REQUIRED IN GRASS OR OPEN AREAS. SPARGED EDGES SHALL SEPARATE MULCH BEDS FROM TURF OR SEEDED AREAS. A SPADED EDGE IS NOT REQUIRED ALONG CURBED EDGES.

9. INSTALLATION OF TREES WITHIN PARKWAYS SHALL BE COORDINATED IN THE FIELD WITH LOCATIONS OF UNDERGROUND UTILITIES. TREES SHALL NOT BE LOCATED CLOSER THAN 5' FROM UNDERGROUND UTILITY LINES AND NO CLOSER THAN 10' FROM UTILITY STRUCTURES.

10. DO NOT DISTURB THE EXISTING PAVING, LIGHTING, OR LANDSCAPING THAT EXISTS ADJACENT TO THE SITE UNLESS OTHERWISE SPECIFIED.

11. PLANT QUANTITIES SHOWN ARE FOR THE CONVENIENCE OF THE OWNER AND JURISDICTIONAL REVIEW AGENCIES. THE CONTRACTOR IS RESPONSIBLE FOR VERIFYING ALL PLANT QUANTITIES AS DRAWN.

12. THE OWNER'S REPRESENTATIVE AND/OR THE VILLAGE OF ARLINGTON HEIGHTS MAY REJECT ANY PLANT MATERIALS THAT ARE DEFECTIVE, DAMAGED, OR OTHER FACTORS THAT AFFECT QUALITY.

13. AS PER THE VILLAGE OF ARLINGTON HEIGHTS, THE OWNER OF THE BUILDING IS RESPONSIBLE FOR MAINTAINING THE BUILDING STRUCTURE, PARKING LOT, RETENTION/DETENTION BASIN IN A WELL-MAINTAINED CONDITION. MAINTENANCE STANDARDS FOR REPLACEMENT OF ROADSIDE TREES, SIGNAGE, LIGHTING, AND FENCING SHALL BE BASED ON THE CITY OF CHICAGO STAFF ENCLOSURES WHEN NECESSARY TO AVOID DETEIORATION, AND MAINTAIN SCREENING WALLS AND VEGETATIVE BERMS.

TREES

CODE	QTY	BOTANICAL NAME	COMMON NAME	CONT	CAL	SIZE
AA	27	AMELANCHIER CANADENSIS 'AUTUMN BRILLIANCE'	AUTUMN BRILLIANCE SERVICEBERRY	B & B	2'	CAL MIN
AF	16	ACER FREEMANII 'JEFFERSRED' TM	AUTUMN BLAZE MAPLE	B & B	4'	CAL MIN
GA	20	GINKGO BILOBA 'AUTUMN GOLD' TM	MAIDENHAIR TREE	B & B	4'	CAL MIN
GI	20	GLEDITSIA TRIACANTHOS INERMIS 'SKYCOLE' TM	SKYLINE THORNLESS HONEY LOCUST	B & B	4'	CAL MIN
PC	8	PICEA PUNGENS	COLORADO SPRUCE	B & B		8' HT MIN
PM	13	PLATANUS X ACERIFOLIA 'MORTON CIRCLE'	EXCLAMATION LONDON PLANE TREE	B & B	4'	CAL MIN
QM	7	QUERCUS MUEHLENBERGII	CHINKAPIN OAK	B & B	4'	CAL MIN
QM2	12	QUERCUS MACROCARPA	BURR OAK	B & B	4'	CAL MIN

SHRUBS:

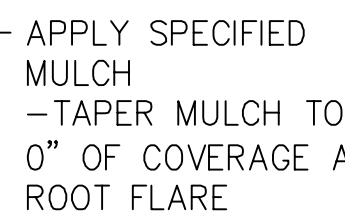
CODE	QTY	BOTANICAL NAME	COMMON NAME	CONT	SPACING	SIZE
HB	27	HYPERICUM KALMIANUM 'BLUE VELVET'	KALM ST. JOHNSWORT	3 GAL		
HJ	36	HYDRANGEA PANICULATA 'JANE'	LITTLE LIME PANICLED HYDRANGEA	3 GAL		
HP	6	HYPERICUM PATULUM 'SUNGOLD'	SUNGOLD ST. JOHN'S WORT	3 GAL		

ORNAMENTAL GRASSES

<u>S</u>	<u>CODE</u>	<u>QTY</u>	<u>BOTANICAL NAME</u>	<u>COMMON NAME</u>	<u>CONT</u>	<u>SPACING</u>	<u>SIZE</u>
	PH	14	PANICUM VIRGATUM 'HEAVY METAL'	BLUE SWITCH GRASS	3 GAL	36" OC	

PERENNIALS

<u>CODE</u>	<u>QTY</u>	<u>BOTANICAL NAME</u>	<u>COMMON NAME</u>	<u>CONT</u>	<u>SPACING</u>	<u>SIZE</u>	<u>SPACING</u>
AS	52	ALLIUM X 'SUMMER BEAUTY'	SUMMER BEAUTY ALLIUM	1 GAL	18" OC		18" o.c.
AT	56	AMSONIA TABERNAEMONTANA	EASTERN BLUESTAR	1 GAL			24" o.c.
HR	30	HEUCHERA RICHARDSONII	PRAIRIE ALUM ROOT	1 GAL			18" o.c.
SA	141	SESLERIA AUTUMNALIS	AUTUMN MOOR GRASS	1 QT	18" OC		18" o.c.
SH	1,666	SPOROBOLUS HETEROLEPIS	PRAIRIE DROPSEED	1 QT	24" OC		24" o.c.



WHEN PLANTED ON A CURVE ORIENT ROWS TO FOLLOW THE LONG AXIS OF AREAS WHERE PLANTS ARE MASSED. PERENNIALS SHALL BE PLACED WITH THEIR CENTERS 24" FROM THE EDGE OF BED.

