



SITE LOCATION MAP  
NOT TO SCALE



PROJECT LOCATION

# NORTHWEST CROSSINGS

## COMPREHENSIVE SIGN PACKAGE AND SIGN VARIATION REQUEST

### 1421 AND 1501 SHURE DRIVE ARLINGTON HEIGHTS, ILLINOIS

ISSUED FOR DESIGN COMMISSION  
FILED ON JUNE 4, 2015



© 2015 OKW ARCHITECTS

### PROJECT DESCRIPTION

NORTHWEST CROSSINGS IS THE DEVELOPMENT FORMERLY KNOWN AS THE NOKIA DEVELOPMENT, LOCATED BETWEEN SHURE DRIVE AND CELLULAR DRIVE AND WILKE ROAD AND KENNICOTT DRIVE. THE SCOPE OF WORK INCLUDED UNDER THIS SUBMITTAL IS FOR CAMPUS SIGNAGE.

### PROJECT DIRECTORY

#### OWNER'S REPRESENTATIVE TORBURN PARTNERS

CONTACT: ADAM KELDERMANS  
1033 SKOKIE BOULEVARD, SUITE 480  
NORTHBROOK, ILLINOIS 60062  
p: 847.562.1616

#### ARCHITECT OKW ARCHITECTS

CONTACT: TRAVIS J. BRIDGES, AIA  
600 W. JACKSON BLVD., SUITE 250  
CHICAGO, ILLINOIS 60661  
p: 312.798.7739 f: 312.798.7777

### PROJECT DRAWING INDEX

SHEET #	TITLE	DESIGN COMMISSION			
A000	COVER SHEET	6.4.2015			BY OKW
A101	ARCHITECTURAL SITE PLAN				BY OKW
A201	GROUND SIGNS PLANS AND ELE.				BY OKW
A210	BUILDING SIGNAGE ELEVATIONS				BY OKW
A301	IMAGES OF PROPERTIES				BY OKW
A302	IMAGES OF PROPERTIES				BY OKW
A303	IMAGES OF PROPERTIES				BY OKW
A304	IMAGES OF PROPERTIES				BY OKW

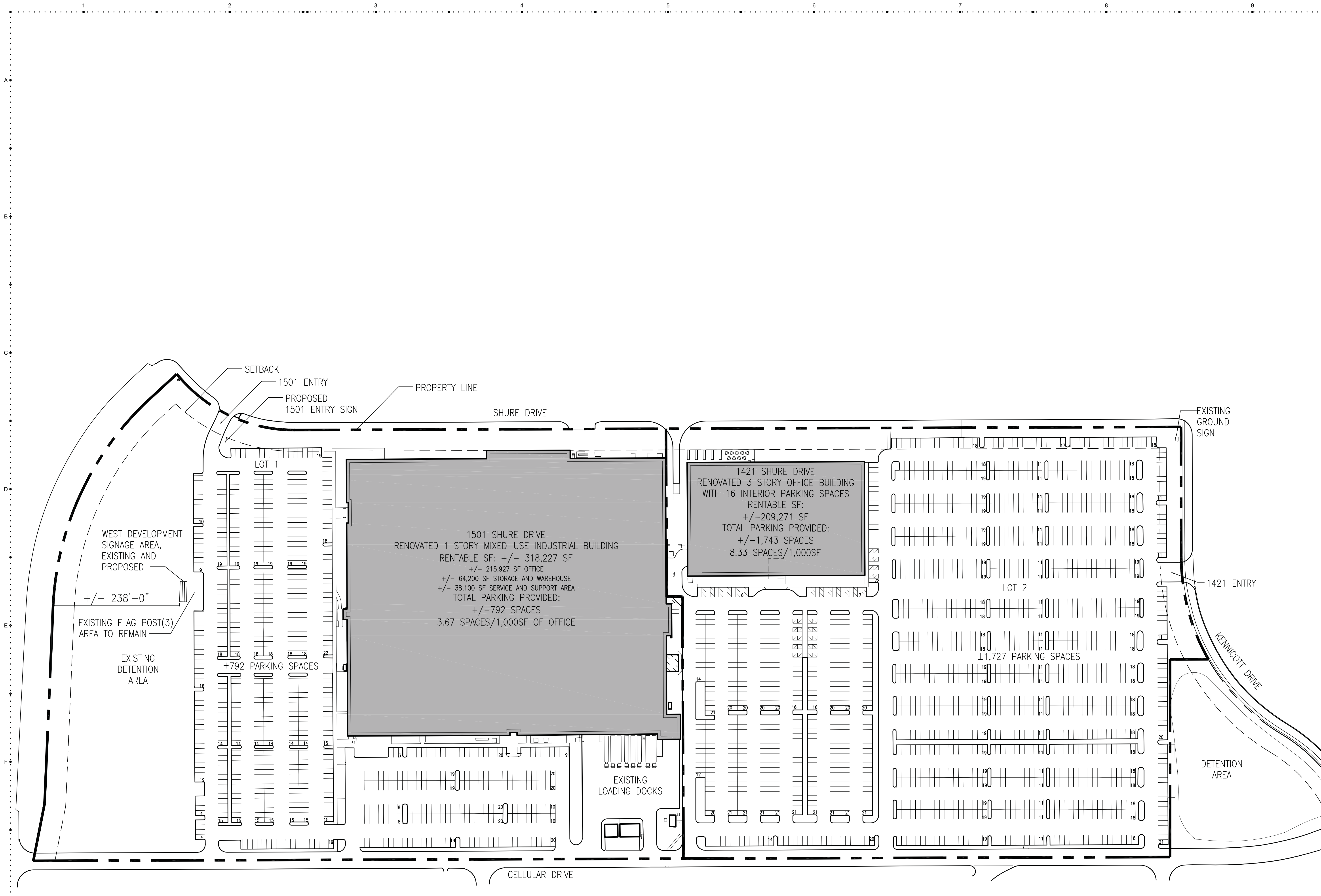


FILED FOR DESIGN COMMISSION: 6.4.2015

OKW JOB NO. 13043  
OKW Architects

A000





1501 SHURE DRIVE  
RENOVATED 1 STORY MIXED-USE INDUSTRIAL BUILDING  
RENTABLE SF: +/- 318,227 SF  
+/- 215,927 SF OFFICE  
+/- 64,200 SF STORAGE AND WAREHOUSE  
+/- 38,100 SF SERVICE AND SUPPORT AREA  
TOTAL PARKING PROVIDED:  
+/- 792 SPACES  
3.67 SPACES/1,000SF OF OFFICE

1421 SHURE DRIVE  
RENOVATED 3 STORY OFFICE BUILDING  
WITH 16 INTERIOR PARKING SPACES  
RENTABLE SF:  
+/- 209,271 SF  
TOTAL PARKING PROVIDED:  
+/- 1,743 SPACES  
8.33 SPACES/1,000SF

LOT 1  
±792 PARKING SPACES

LOT 2  
±1,727 PARKING SPACES

WEST DEVELOPMENT  
SIGNAGE AREA,  
EXISTING AND  
PROPOSED  
+/- 238'-0"

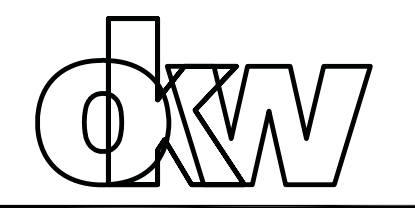
EXISTING FLAG POST(3)  
AREA TO REMAIN

EXISTING  
DETENTION  
AREA

EXISTING  
LOADING DOCKS

DETENTION  
AREA

DESIGN COMMISSION NO.	6.4.2015
ISSUED FOR:	DATE:



OKW  
Architects  
600 W. Jackson Blvd.  
Chicago, Illinois 60661  
T 312.798.7700  
F 312.798.7777  
www.okwarchitects.com

NORTHWEST CROSSINGS  
1421 AND 1501 SHURE DRIVE  
ARLINGTON HEIGHTS, ILLINOIS

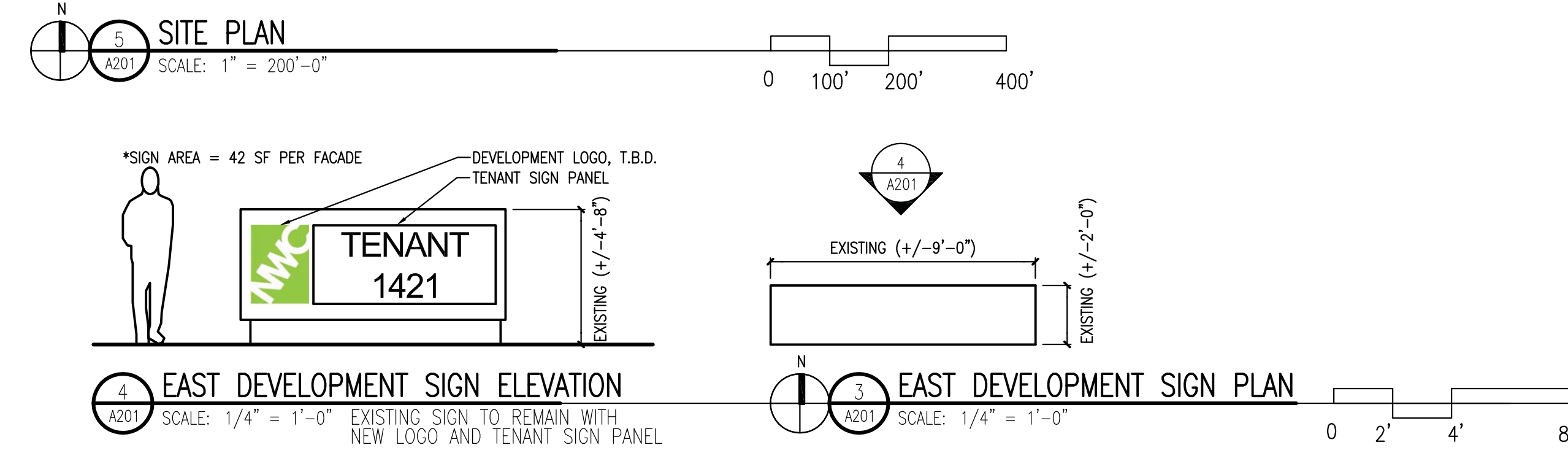
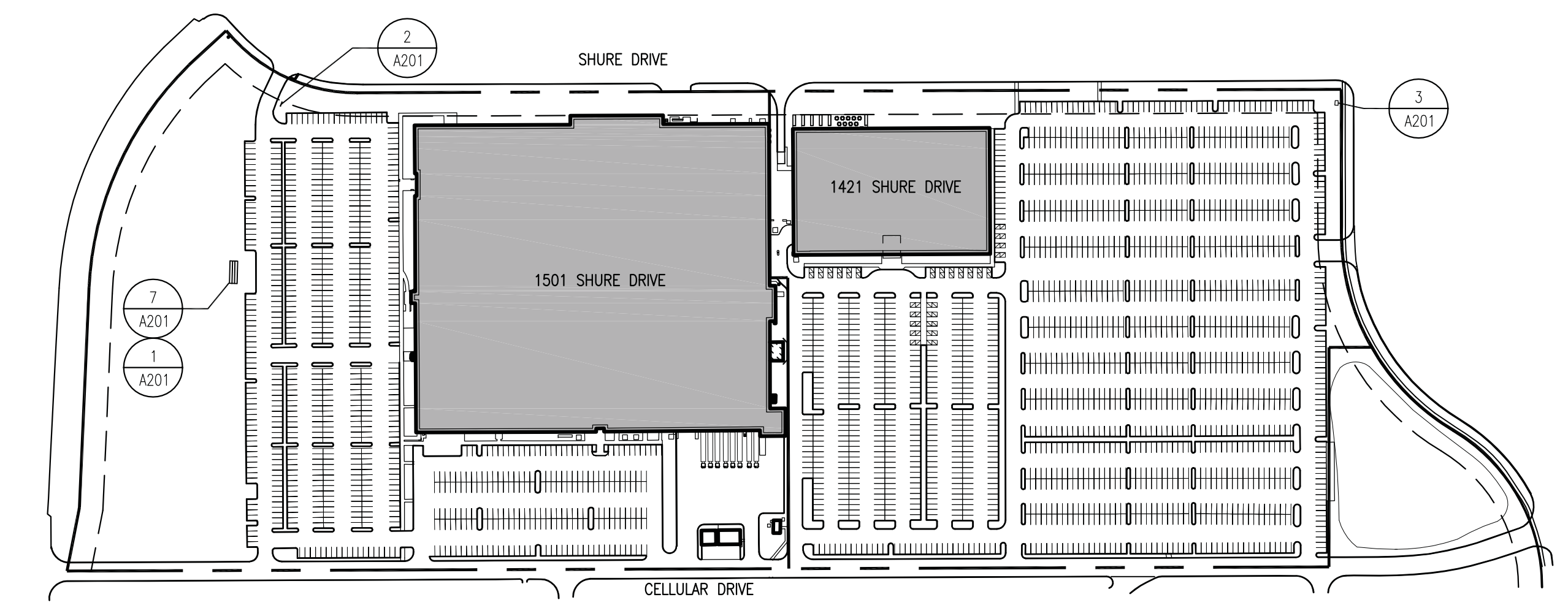
ARCHITECTURAL  
SITE PLAN

DRAWN BY: TJB CHECKED: TJB

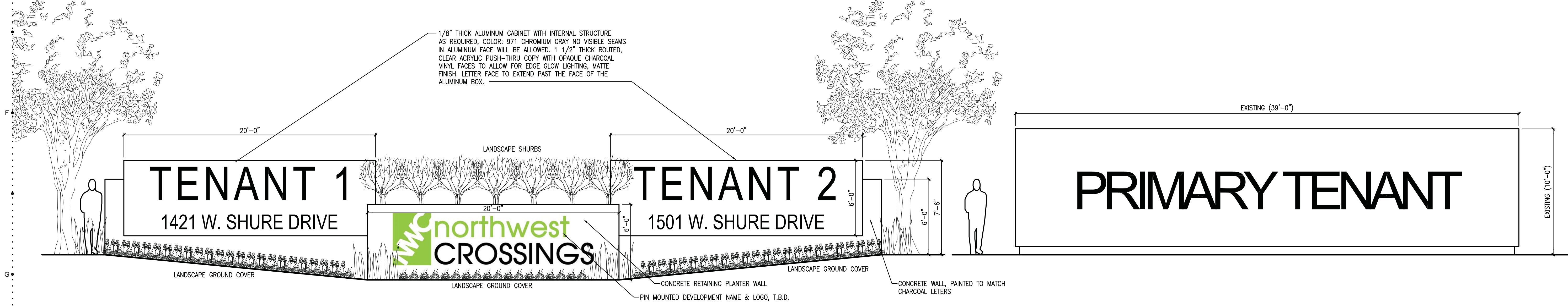
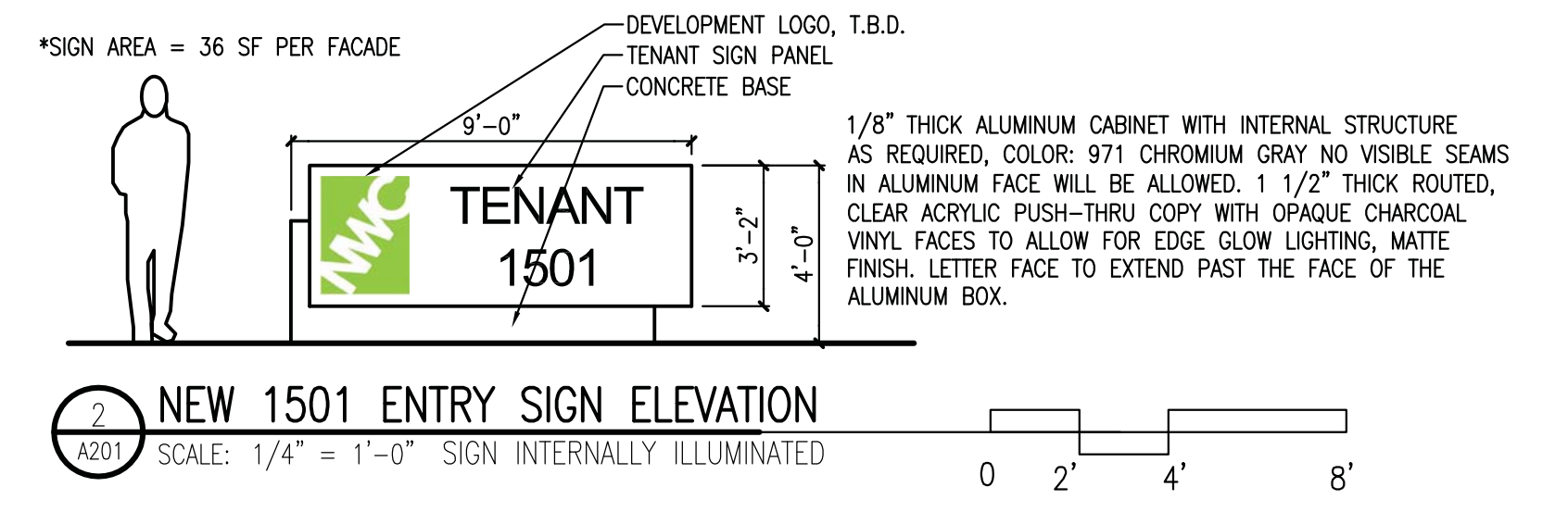
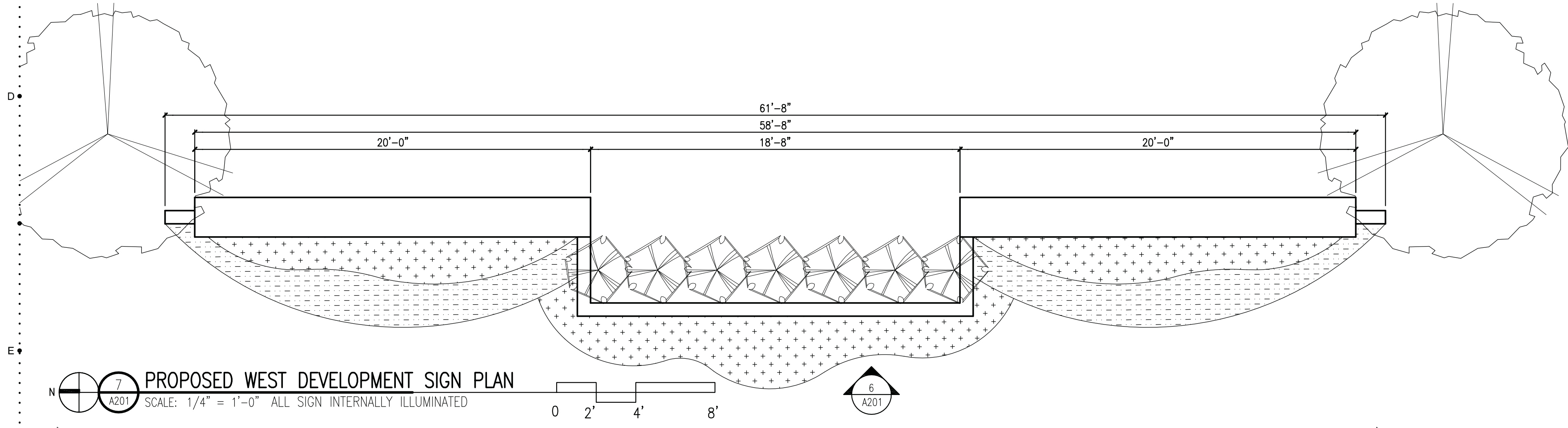
DATE:  
6.4.2015 SHEET NO:

PROJ. NO:  
13043 A101





8 PROPOSED VIEW OF WEST DEVELOPMENT SIGNAGE  
SCALE: N.T.S.



6 PROPOSED WEST DEVELOPMENT SIGN ELEVATION  
SCALE: 1/4" = 1'-0" ALL SIGNS INTERNALLY ILLUMINATED  
TOTAL PROPOSED SIGN AREA = 360SF

1 EXISTING WEST DEVELOPMENT SIGN ELEVATION  
SCALE: 1/4" = 1'-0" SIGN TO BE REPLACED BY PROPOSED SIGN  
EXISTING SIGN AREA = 390 SF

DESIGN COMMISSION NO.	6.4.2015
ISSUED FOR:	DATE:

**OKW**  
Architects  
600 W. Jackson Blvd.  
Chicago, Illinois 60661  
T 312.798.7700  
F 312.798.7777  
www.okwarchitects.com

NORTHWEST CROSSINGS  
1421 AND 1501 SHURE DRIVE  
ARLINGTON HEIGHTS, ILLINOIS

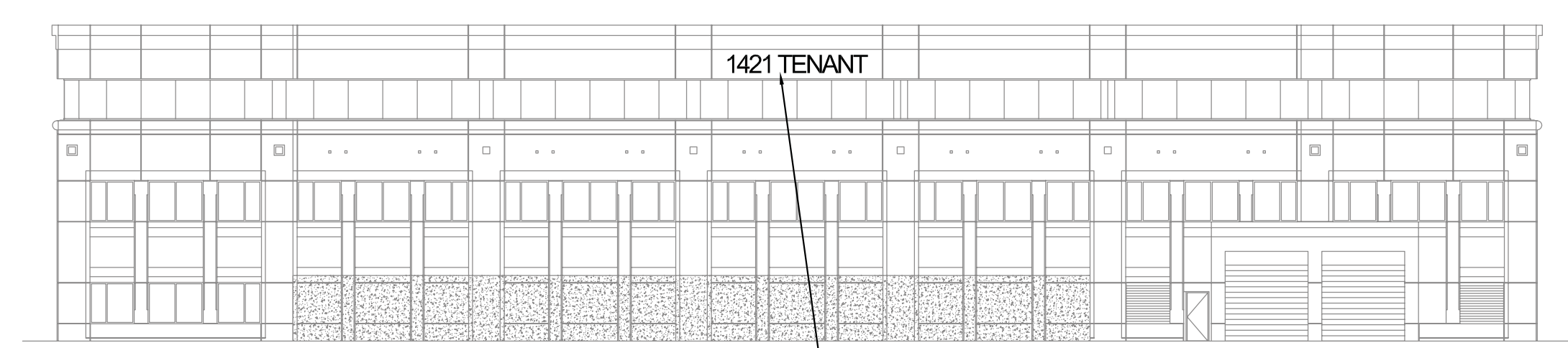
GROUND SIGNS  
PLANS AND  
ELEVATIONS

DRAWN BY: TJB CHECKED: TJB

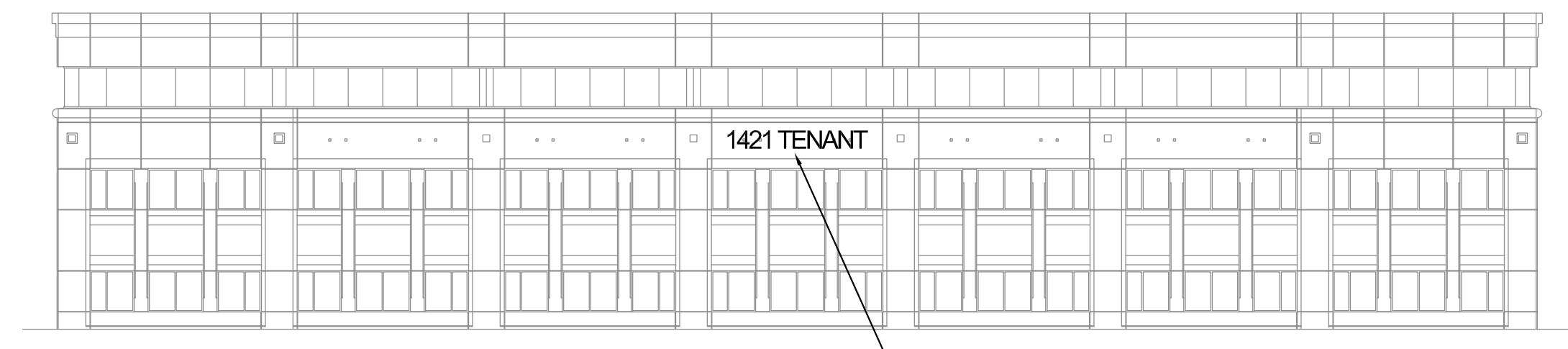
DATE: 6.4.2015 SHEET NO: 13043 A201



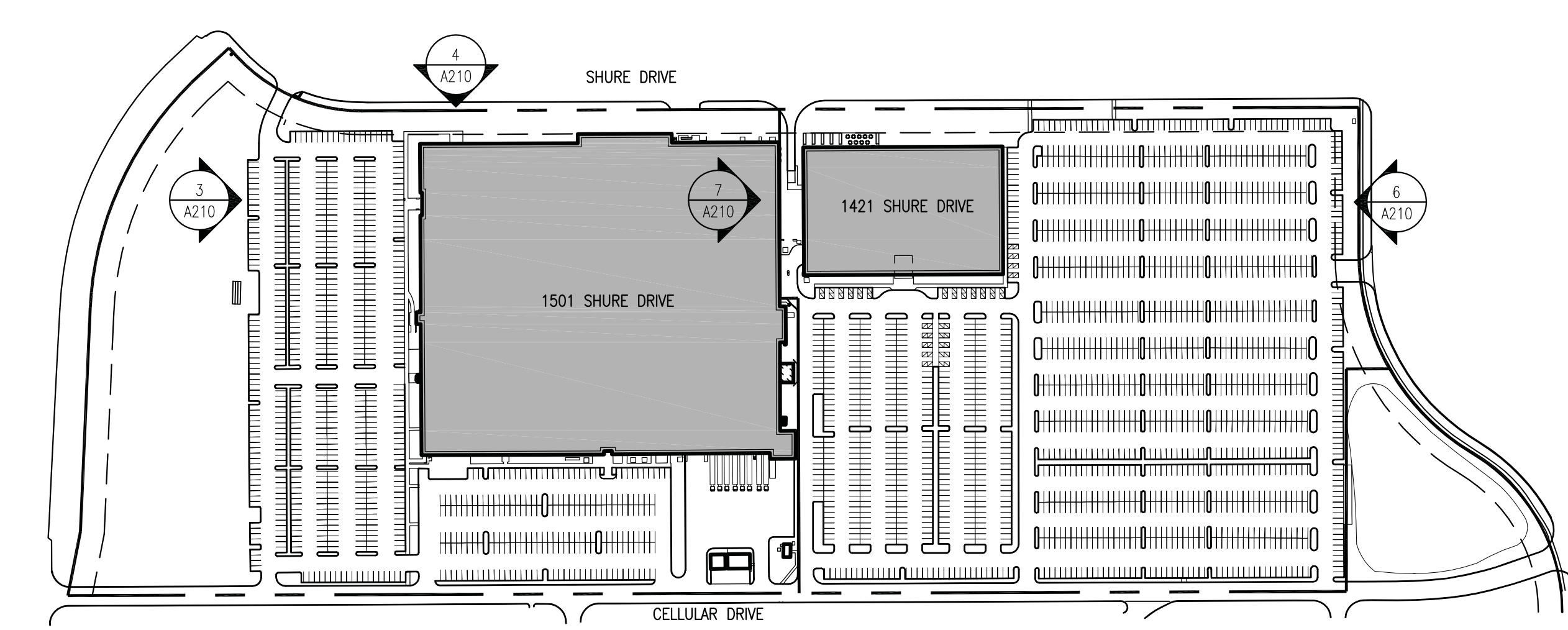
ALL OFFICE BUILDING SIGNS TO HAVE THE FOLLOWING ITEMS:  
 - INTERNALLY ILLUMINATED  
 - REVERSE CHANNEL  
 - WHITE LED  
 - COLOR OF LETTERS AND RETURNS T.B.D.  
 - PER TENANT'S CORPORATE BRANDING  
 - LOGO AND FONTS TO BE PER CORPORATE BRANDING



**7 1421 WEST ELEVATION**  
 SCALE: 1" = 20'-0" ALL SIGN INTERNALLY ILLUMINATED  
 TENANT 1421 SIGN PANEL, MAX SIZE OF 75 SF, FINAL LOCATION ON FACADE T.B.D. AS APPROVED BY TENANT AND LANDLORD

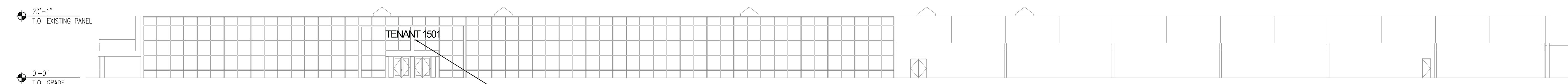


**6 1421 EAST ELEVATION**  
 SCALE: 1" = 20'-0" ALL SIGN INTERNALLY ILLUMINATED  
 TENANT 1421 SIGN PANEL, MAX SIZE OF 75 SF, FINAL LOCATION ON FACADE T.B.D. AS APPROVED BY TENANT AND LANDLORD

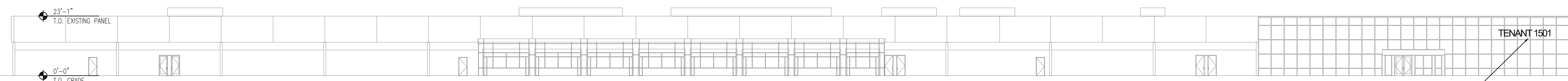


**5 SITE PLAN**  
 SCALE: 1" = 200'-0"

- 45'-9" T.O. EXISTING PANEL
- 29'-6" T.O. 3RD FLOOR
- 14'-9" T.O. 2ND FLOOR
- 0'-0" T.O. GRADE
- 45'-9" T.O. EXISTING PANEL
- 29'-6" T.O. 3RD FLOOR
- 14'-9" T.O. 2ND FLOOR
- 0'-0" T.O. GRADE



**4 1501 WEST ELEVATION**  
 SCALE: 1" = 20'-0" ALL SIGN INTERNALLY ILLUMINATED  
 TENANT 1501 SIGN PANEL, MAX SIZE OF 75 SF, FINAL LOCATION ON FACADE T.B.D. AS APPROVED BY TENANT AND LANDLORD



**3 1501 NORTH ELEVATION**  
 SCALE: 1" = 20'-0" ALL SIGN INTERNALLY ILLUMINATED  
 TENANT 1501 SIGN PANEL, MAX SIZE OF 75 SF, FINAL LOCATION ON FACADE T.B.D. AS APPROVED BY TENANT AND LANDLORD



**2 VIEW OF 1421 BUILDING SIGNAGE**  
 SCALE: N.T.S. ALL SIGN INTERNALLY ILLUMINATED



**1 VIEW OF 1501 BUILDING SIGNAGE**  
 SCALE: N.T.S. ALL SIGN INTERNALLY ILLUMINATED

DESIGN COMMISSION NO.	6.4.2015
ISSUED FOR:	DATE:

**OKW**  
 Architects  
 600 W. Jackson Blvd.  
 Chicago, Illinois 60661  
 T 312.798.7700  
 F 312.798.7777  
 www.okwarchitects.com

NORTHWEST CROSSINGS  
 1421 AND 1501 SHURE DRIVE  
 ARLINGTON HEIGHTS, ILLINOIS

**BUILDING SIGNAGE ELEVATIONS**

DRAWN BY: TJB CHECKED: TJB

DATE: 6.4.2015 SHEET NO:  
 PROJ. NO: 13043 **A210**





12



8



4



2



11



7



3



1



10



6



CONTEXT PLAN

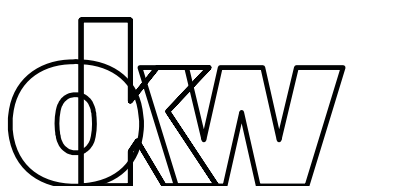


9



5

DESIGN COMMISSION	6.4.2015
NO. ISSUED FOR:	DATE:



**OKW**  
Architects  
600 W. Jackson Blvd.  
Chicago, Illinois 60661  
T 312.798.7700  
F 312.798.7777  
www.okwarchitects.com

**NORTHWEST CROSSINGS**  
1421 AND 1501 SHURE DRIVE  
ARLINGTON HEIGHTS, ILLINOIS

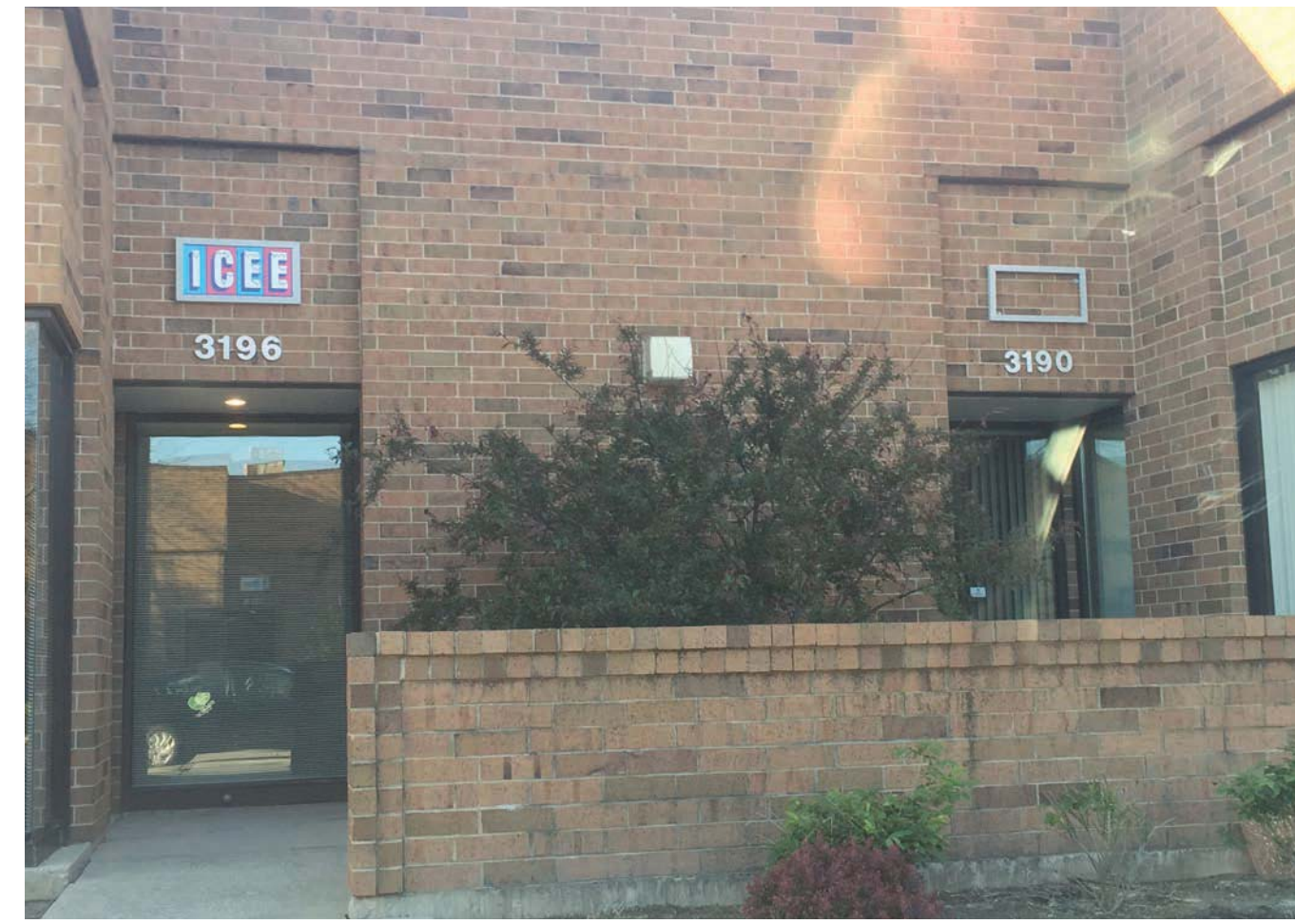
**IMAGES OF SURROUNDING PROPERTIES**

DRAWN BY: TJB CHECKED: TJB

DATE: 6.4.2015 SHEET NO:

PROJ. NO: 13043 **A301**





12



8



4



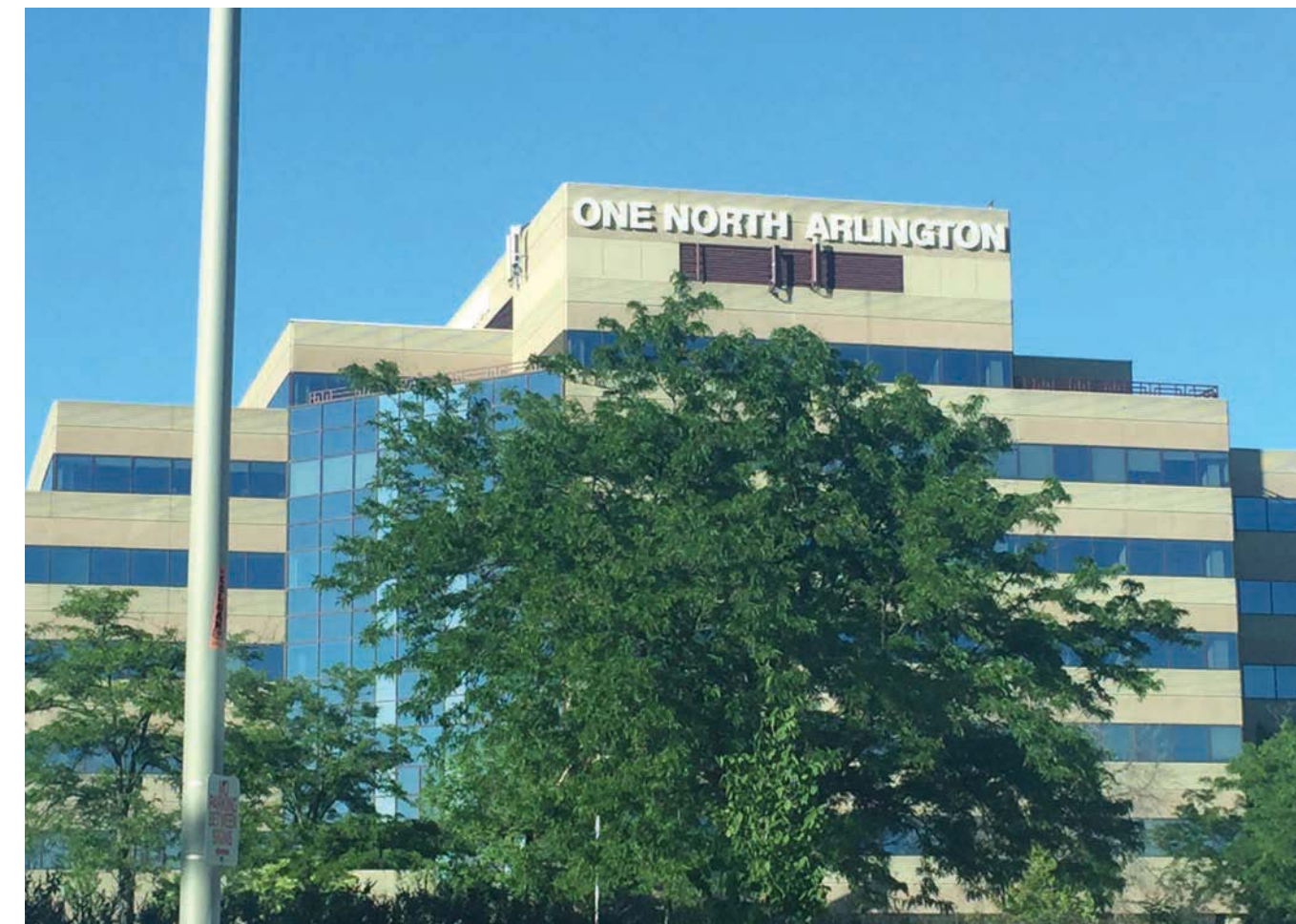
2



11



7



3



1



10



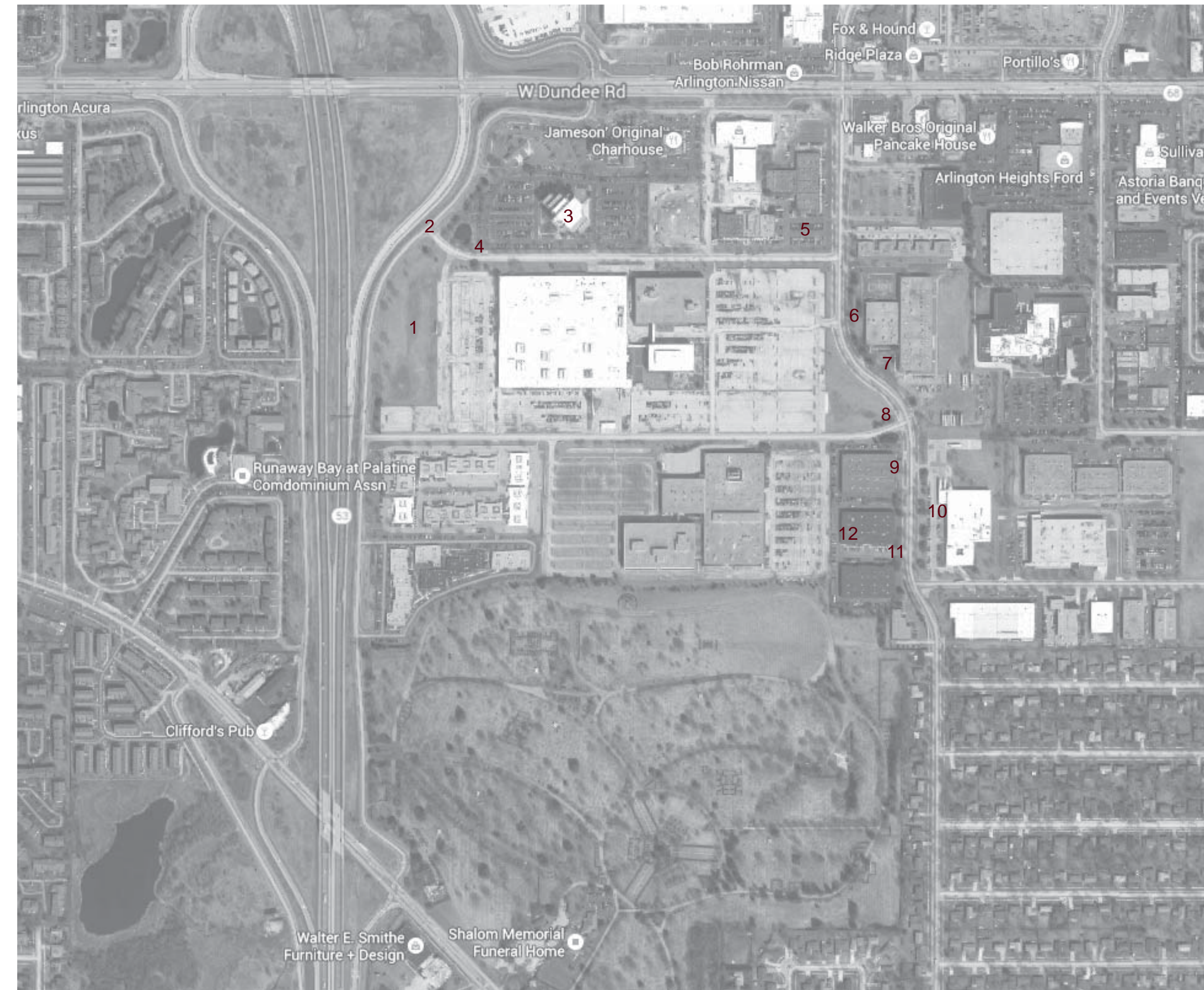
6



9

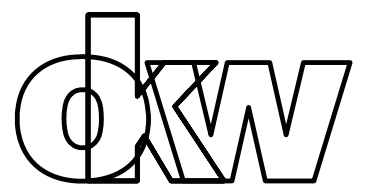


5



CONTEXT PLAN

DESIGN COMMISSION	6.4.2015
NO. ISSUED FOR:	DATE:



OKW  
Architects  
600 W. Jackson Blvd.  
Chicago, Illinois 60661  
T 312.798.7700  
F 312.798.7777  
www.okwarchitects.com

NORTHWEST CROSSINGS  
1421 AND 1501 SHURE DRIVE  
ARLINGTON HEIGHTS, ILLINOIS

IMAGES OF  
SURROUNDING  
PROPERTIES

DRAWN BY: TJB CHECKED: TJB

DATE: 6.4.2015 SHEET NO:

PROJ. NO: 13043 A302





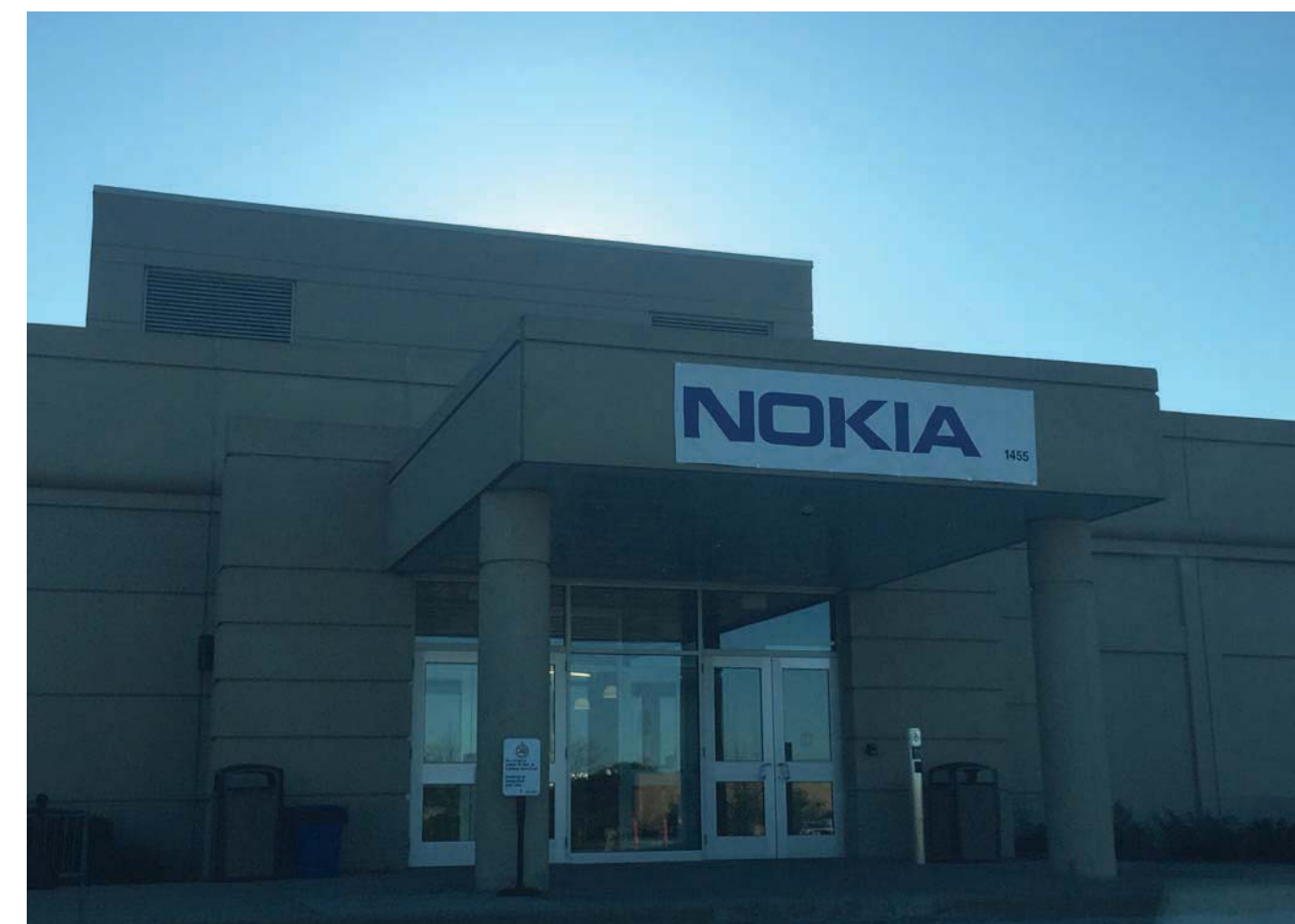
12



8



4



2



11



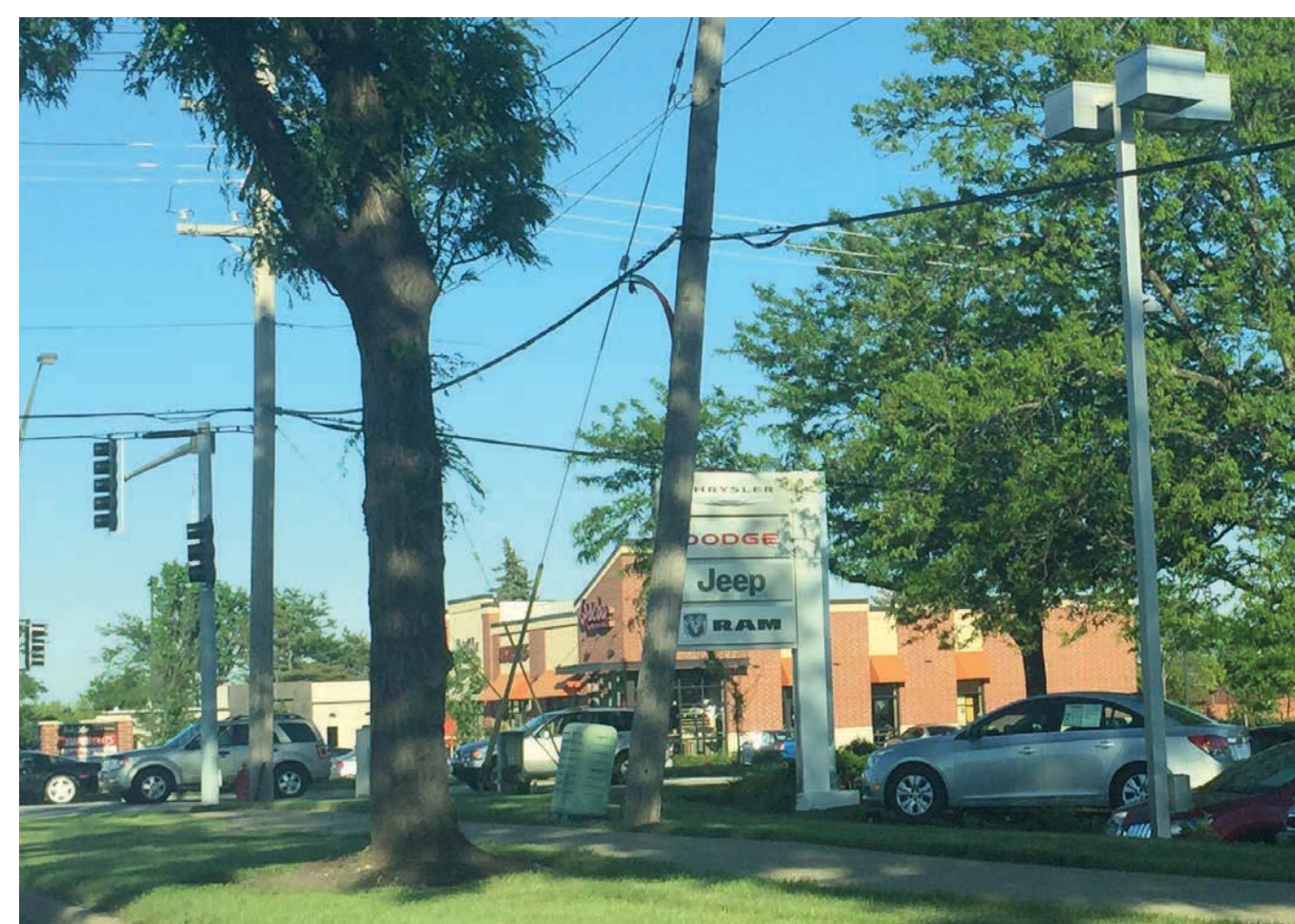
7



3



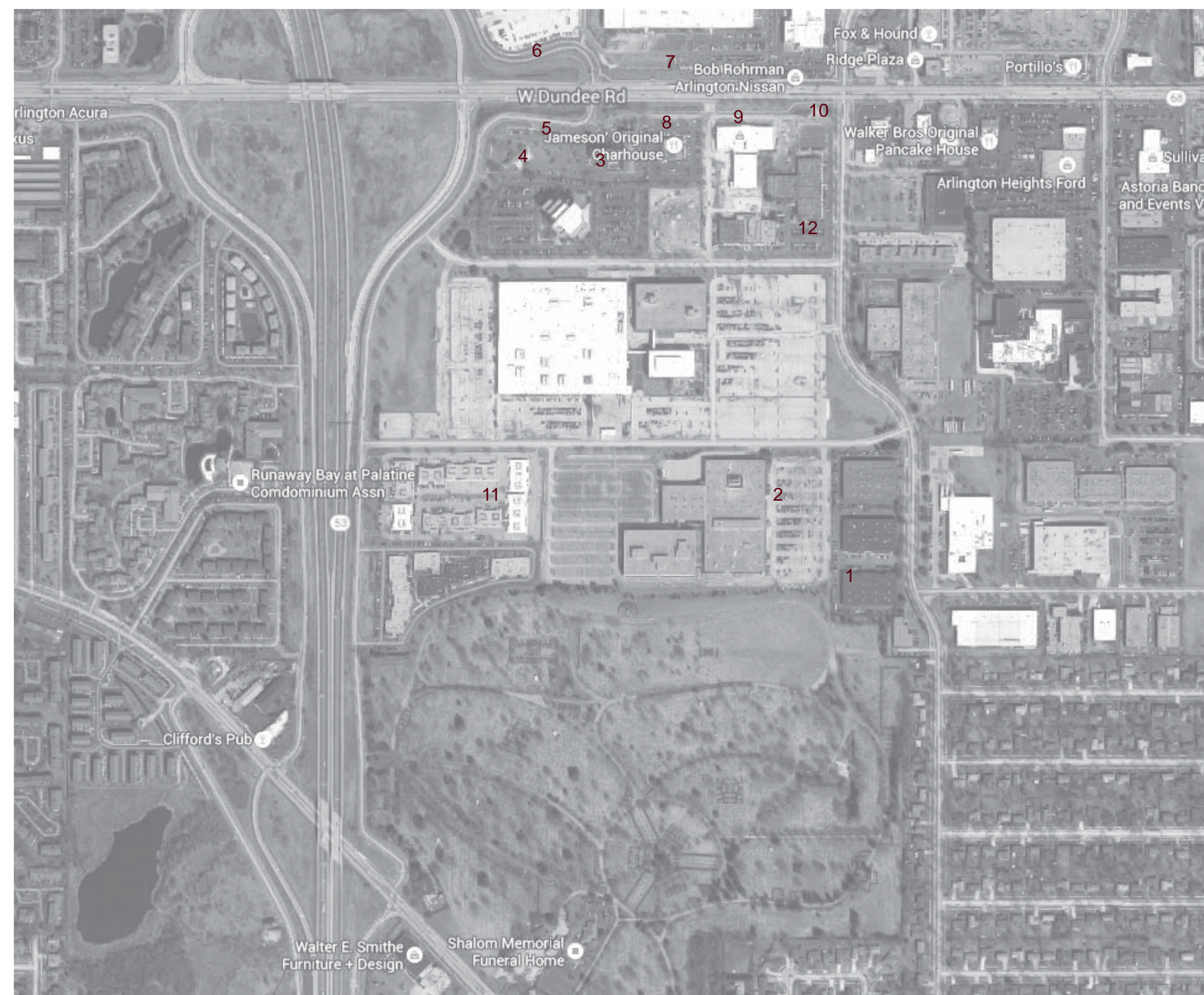
1



10



6



CONTEXT PLAN

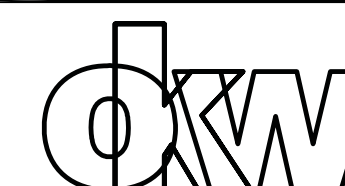


9



5

DESIGN COMMISSION 6.4.2015  
NO. ISSUED FOR: DATE:



OKW  
Architects  
600 W. Jackson Blvd.  
Chicago, Illinois 60661  
T 312.798.7700  
F 312.798.7777  
www.okwarchitects.com

NORTHWEST CROSSINGS  
1421 AND 1501 SHURE DRIVE  
ARLINGTON HEIGHTS, ILLINOIS

IMAGES OF  
SURROUNDING  
PROPERTIES

DRAWN BY: TJB CHECKED: TJB

DATE: 6.4.2015 SHEET NO:  
PROJ. NO: 13043 A303





4



2



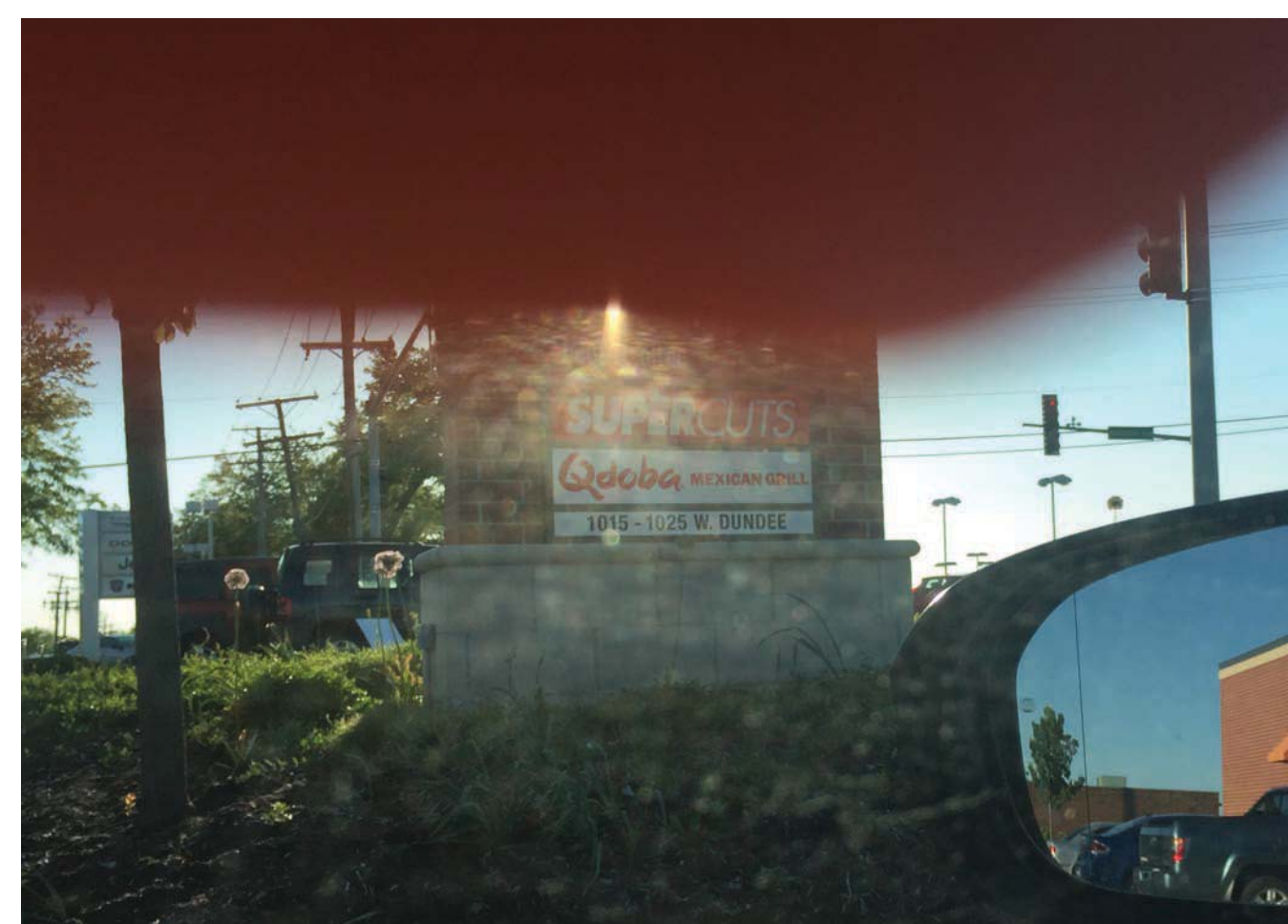
3



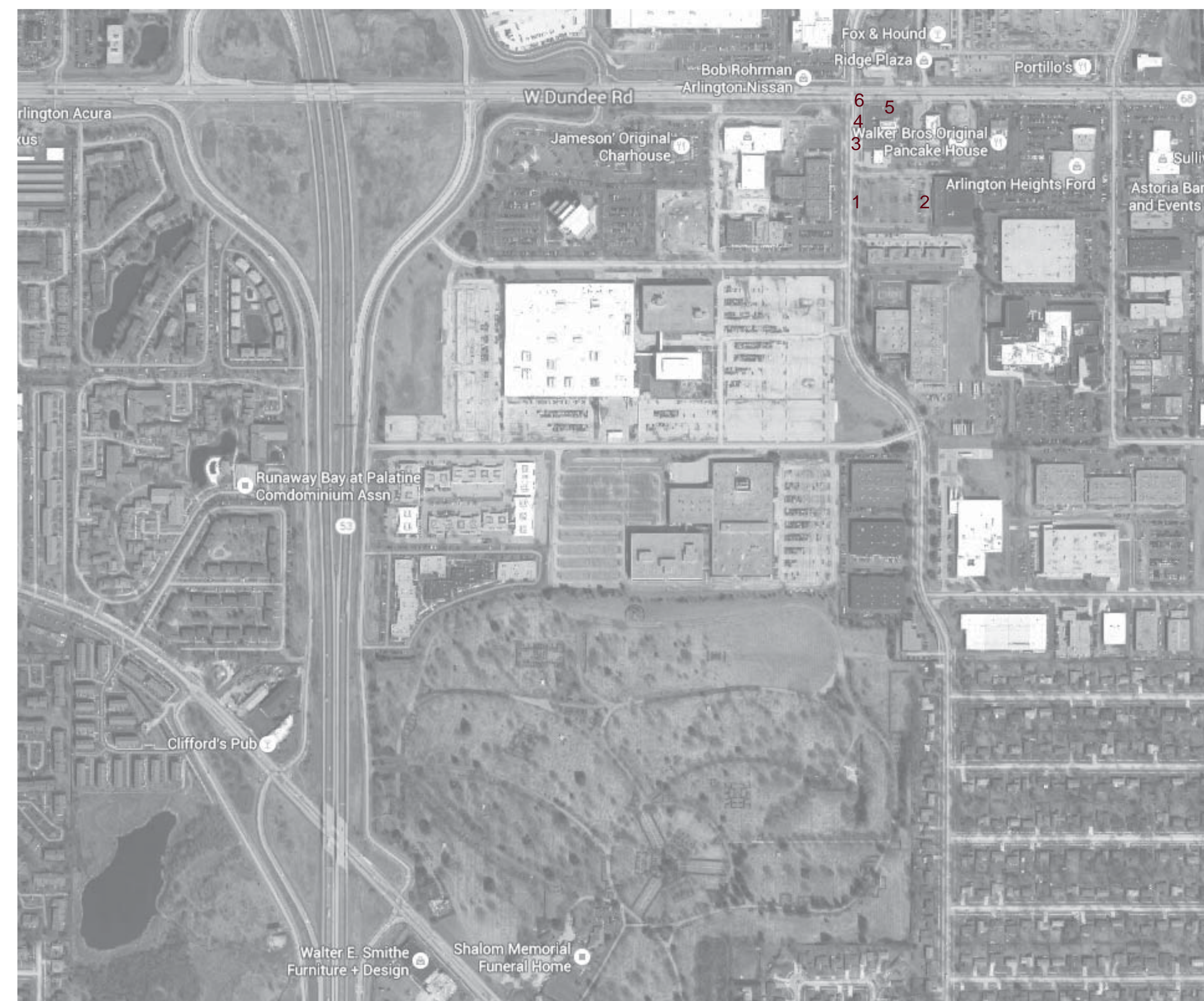
1



6

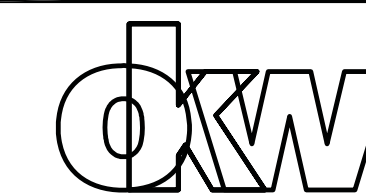


5



CONTEXT PLAN

DESIGN COMMISSION	6.4.2015
NO. ISSUED FOR:	DATE:



**OKW**  
Architects  
600 W. Jackson Blvd.  
Chicago, Illinois 60661  
T 312.798.7700  
F 312.798.7777  
www.okwarchitects.com

**NORTHWEST CROSSINGS**  
1421 AND 1501 SHURE DRIVE  
ARLINGTON HEIGHTS, ILLINOIS

**IMAGES OF SURROUNDING PROPERTIES**

DRAWN BY: TJB CHECKED: TJB

DATE: 6.4.2015 SHEET NO: 13043 **A304**



Sign Area	Material	Drawing Reference
<b>Sign :: Proposed West Development Sign</b>		
Base : Development Name	Unpainted Concrete	A201
Signage Material : Development Name	Pin Mounted Aluminum, painted per final Developmental Logo Design, surface illumination	A201
Base : Tenant 1	Painted Concrete to match Charcoal Letters	A201
Sign Box Material : Tenant 1	1/8" prefinished aluminum, routed for letters Color to Match 971 Chromium Gray	A201
Sign Leter Material : Tenant 1	1-1/2" clear Acrylic, routed and pushed thru Charcoal Vinyl Face, applied to the Acrylic Internally Illuminated	A201
Base : Tenant 2	Painted Concrete to match Charcoal Letters	A201
Sign Box Material : Tenant 2	1/8" prefinished aluminum Color to Match 971 Chromium Gray	A201
Sign Letter Material : Tenant 2	1-1/2" clear Acrylic, routed and pushed thru Charcoal Vinyl Face, applied to the Acrylic Internally Illuminated	A201
<b>Sign :: New 1501 Entry Sign</b>		
Sign Base	Painted Concrete to match Charcoal Letters	A201
Sign Box Material	1/8" prefinished aluminum, routed for letters Color to Match 971 Chromium Gray	A201
Sign Leter Material	1-1/2" clear Acrylic, routed and pushed thru Charcoal Vinyl Face, applied to the Acrylic Internally Illuminated	A201
Development Logo	Pin Mounted Aluminum, painted per final Developmental Logo Design	A201
<b>Sign :: East Development Sign</b>		
Sign Base	Painted Existing Concrete to match Charcoal Letters	A201
Sign Box Material	Paint Existing Box to Match 971 Chromium Gray	A201
Tenant Sign Panel	Pin Mounted Aluminum panel, painted or applied vinyl per final Tenant Branding and Design, surface illumination	A201
Development Logo	Pin Mounted Aluminum, painted per final Developmental Logo Design	A201
<b>Sign :: 1421 West Elevation</b>		
Wall Sign	Wall sign to be Acrylic and/or Aluminum, per Tenant Branding Internally Illuminated with White LED's, Reverse Channel Letter Color to be per Tenant's Corporate Branding Logo to be allowed per Tenant's Corporate Branding	A210
<b>Sign :: 1421 East Elevation</b>		
Wall Sign	Wall sign to be Acrylic and/or Aluminum, per Tenant Branding Internally Illuminated with White LED's, Reverse Channel Letter Color to be per Tenant's Corporate Branding Logo to be allowed per Tenant's Corporate Branding	A210
<b>Sign :: 1501 West Elevation</b>		
Wall Sign	Wall sign to be Acrylic and/or Aluminum, per Tenant Branding Internally Illuminated with White LED's, Reverse Channel Letter Color to be per Tenant's Corporate Branding Logo to be allowed per Tenant's Corporate Branding	A210
<b>Sign :: 1501 North Elevation</b>		
Wall Sign	Wall sign to be Acrylic and/or Aluminum, per Tenant Branding Internally Illuminated with White LED's, Reverse Channel Letter Color to be per Tenant's Corporate Branding Logo to be allowed per Tenant's Corporate Branding	A210

