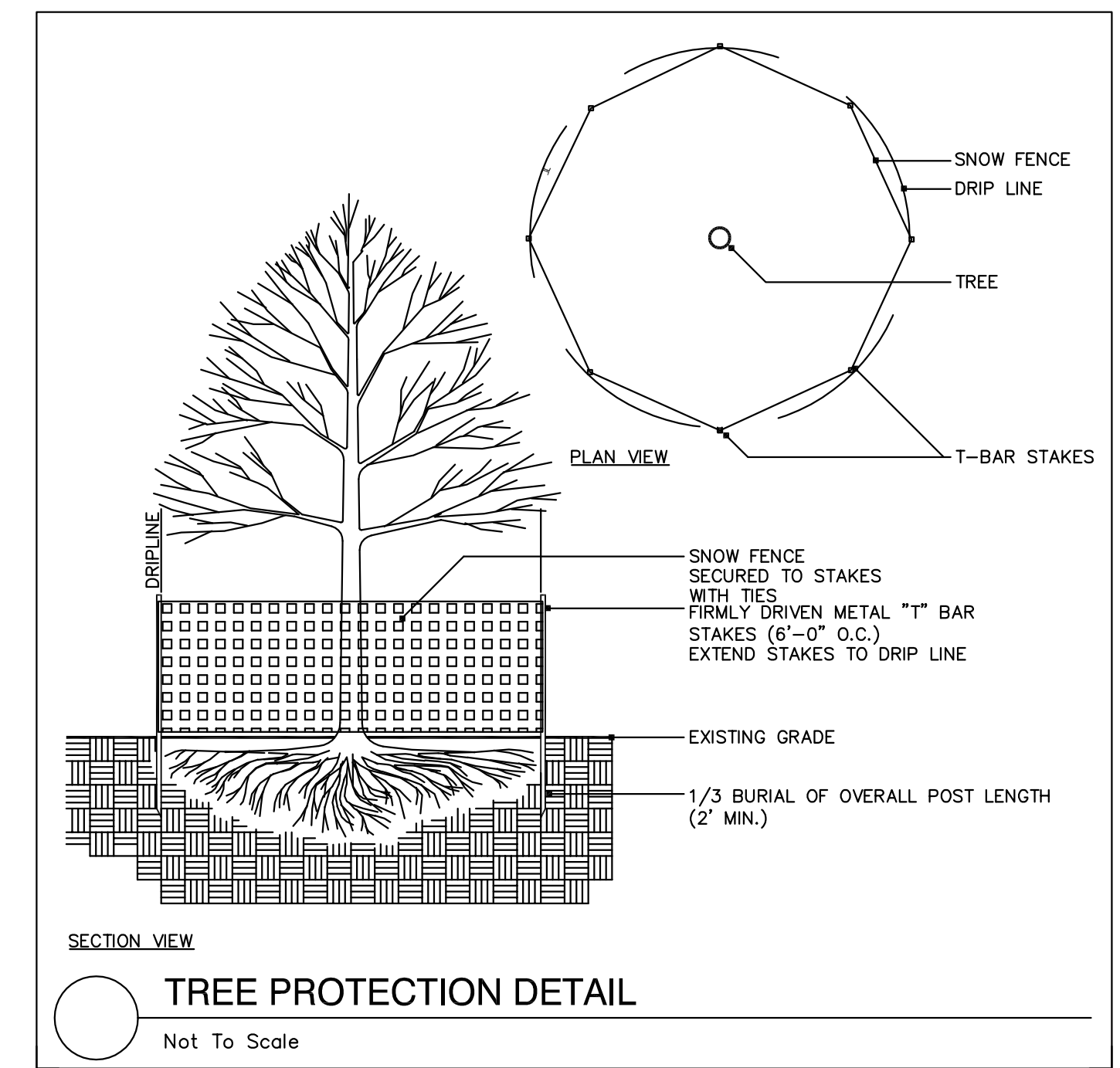
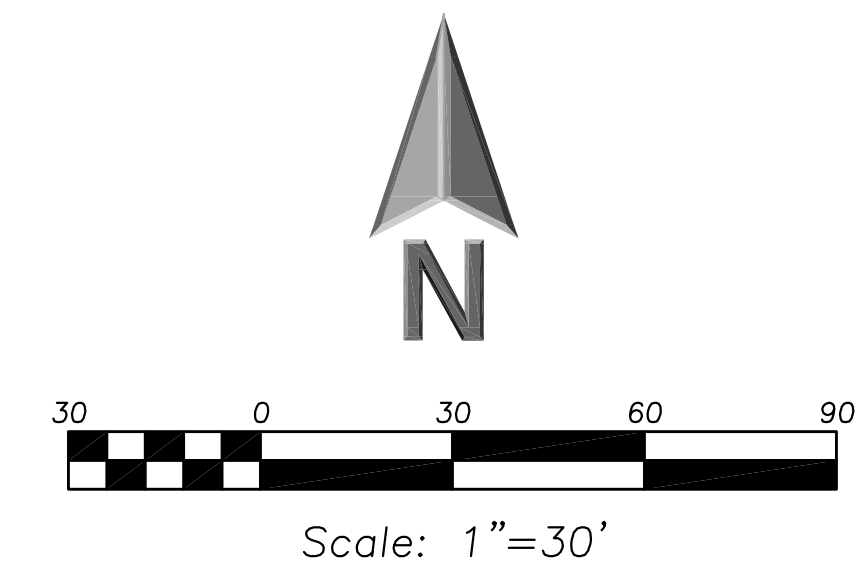
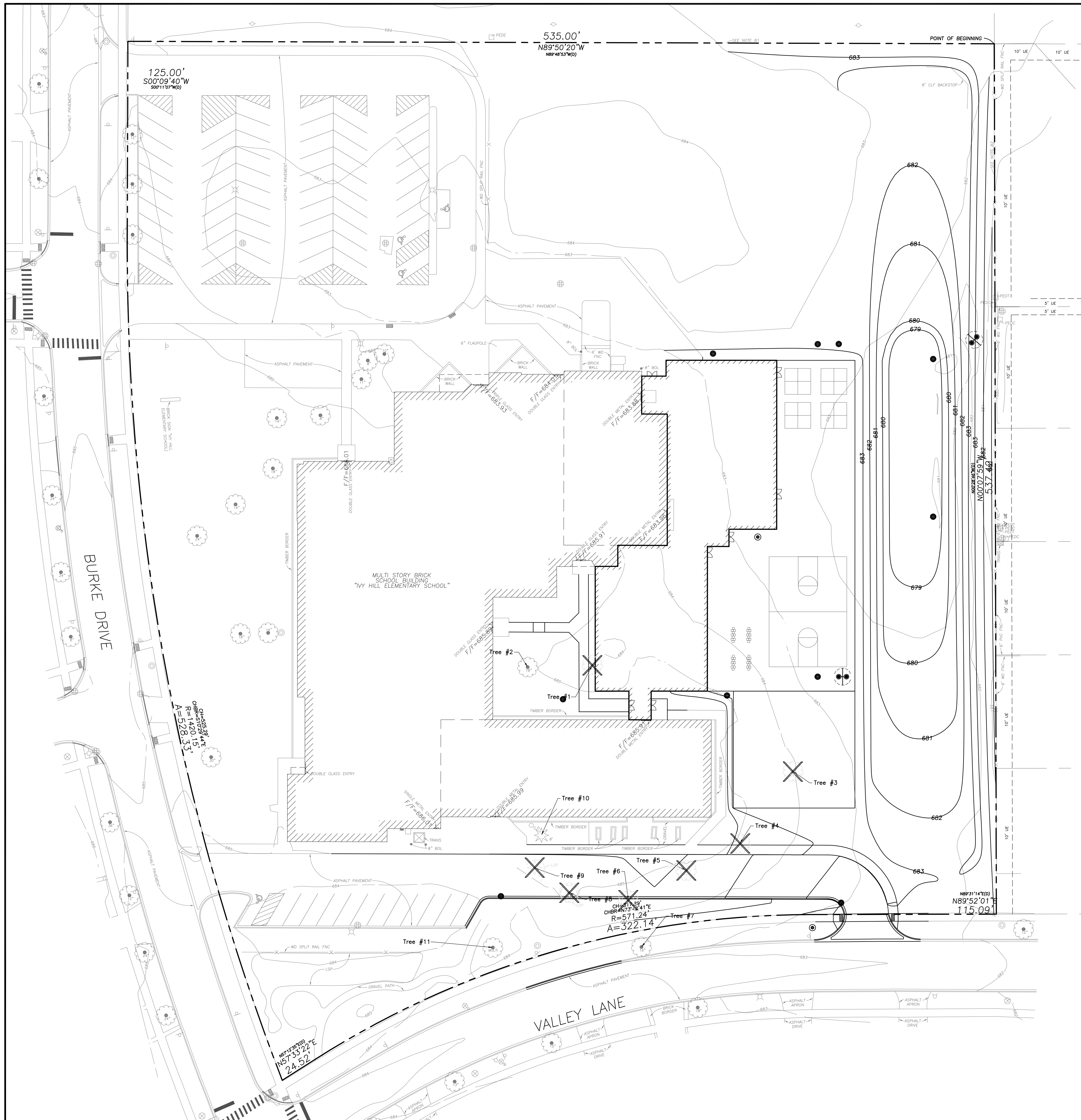


EEA - P:\Josh\Arlington Heights School Dist 25\Drawings\Siteplan-Ivy Hill 2015 Addition.dwg
 Plotted: 7/23/15 @ 5:05pm By: jcap



Existing Tree Survey Data:

TREE #	BOTANICAL NAME	COMMON NAME	TREE SIZE	CONDITION	COMMENTS
1	Fraxinus pensylvanica	Green Ash	36" Cal.	Dead	Emerald Ash Bore
2	Fraxinus pensylvanica	Green Ash	20" Cal.	Dead	Emerald Ash Bore
3	Gleditsia triacanthos inermis	Thornless Honeylocust	24" Cal.	Good	
4	Acer platanoides	Norway Maple	16" Cal.	Poor	3/4 of the canopy is dead
5	Acer platanoides	Norway Maple	14" Cal.	Good	
6	Fraxinus pensylvanica	Green Ash	18" Cal.	Dead	Emerald Ash Bore
7	Tilia americana	American Linden	18" Cal.	Good	
8	Gleditsia triacanthos inermis	Thornless Honeylocust	30" Cal.	Good	
9	Picea canadensis	Norway Spruce	10" Cal.	Good	
10	Picea pungens	Blue Spruce	14" Cal.	Good	
11	Malus sp.	Flowering Crabapple	10" Cal.	Good	

NOTE:
 Existing trees to be removed are indicated on the plan with and "X" and shaded in the table.

**ERIKSSON
 ENGINEERING
 ASSOCIATES, LTD.**
 145 COMMERCE DRIVE, SUITE A
 GRAYSLAKE, ILLINOIS 60030
 PHONE: (847) 223-4804
 FAX: (847) 223-4864
 EMAIL: INFO@EEA-LTD.COM
 PROFESSIONAL DESIGN FIRM
 LICENSE NO. 184-003220
 EXPIRES: 04/30/2017

**IVY HILL ELEMENTARY SCHOOL
 ADDITION AND RENOVATIONS**
 2211 N. Burke Dr.
 Arlington Heights, Illinois

Reserved for Seal:

Expiration Date: _____

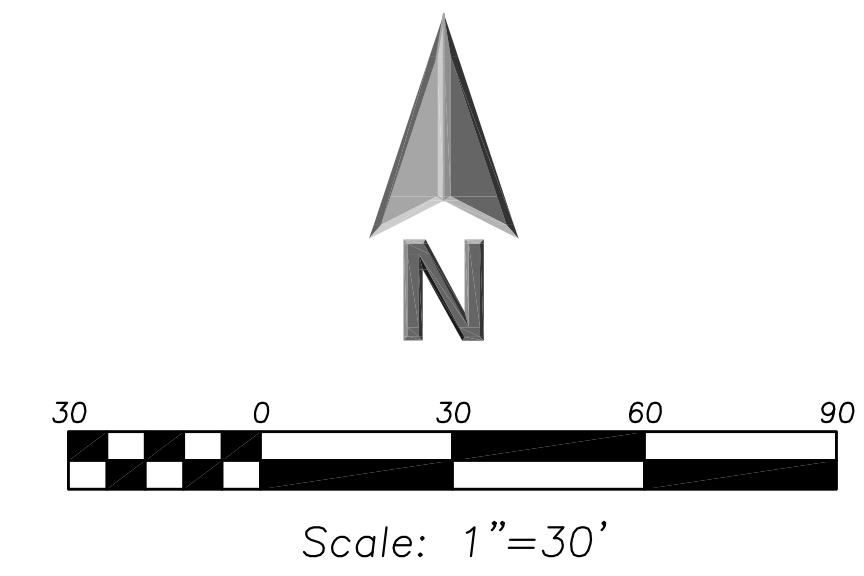
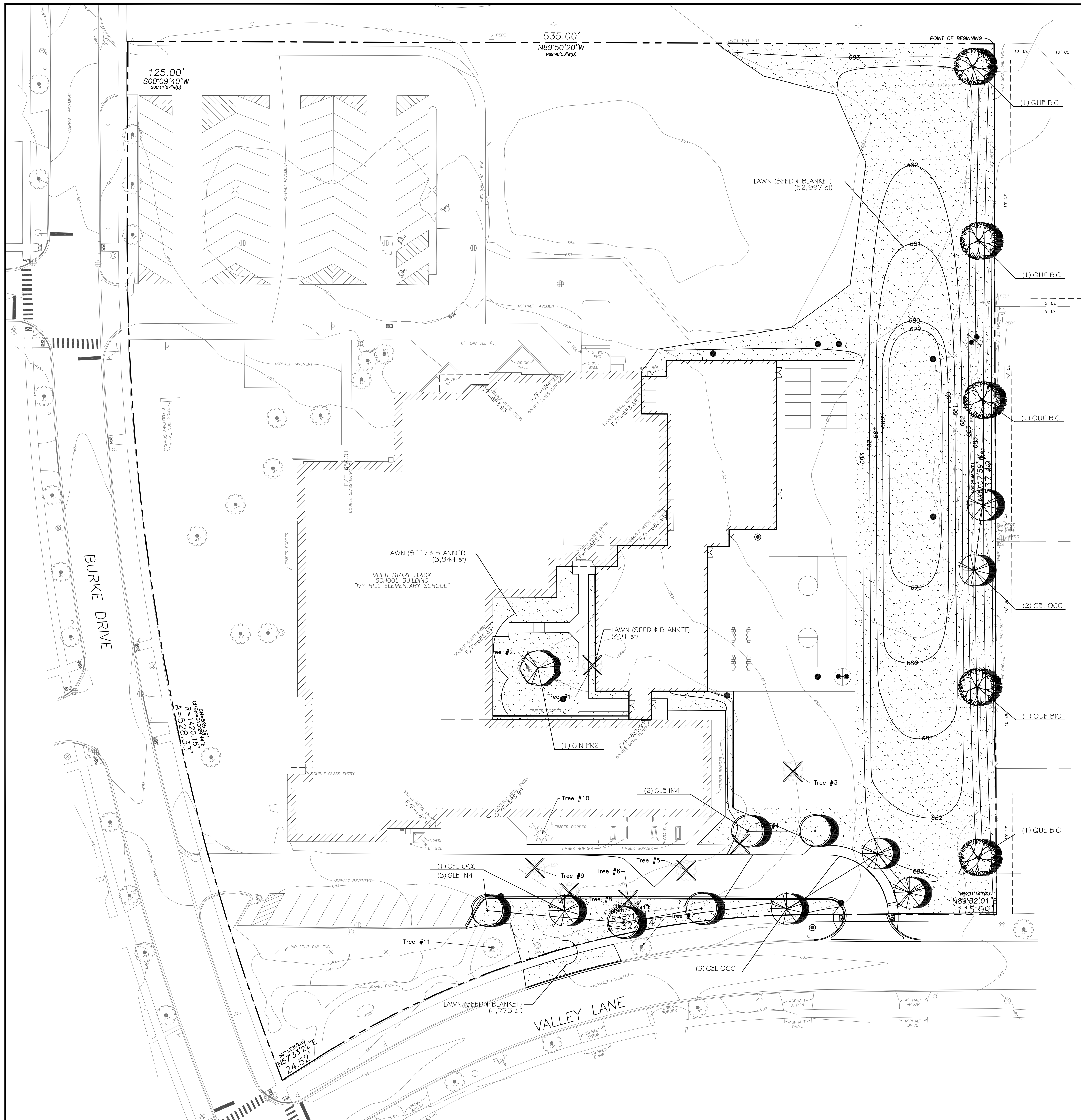
No.	Date	Description

Design By: SG Date: 06/06/15
 Approved By: KC Project No.:

Sheet Title:
**TREE
 PRESERVATION
 PLAN**

Sheet No:
TP100

© ERIKSSON ENGINEERING ASSOCIATES, LTD., 2015
 THIS PLAN & DESIGN ARE THE PROPERTY OF ERIKSSON ENGINEERING ASSOCIATES, LTD.
 NO REPRODUCTION OF ANY PART OF THESE PLANS IS PERMITTED WITHOUT THE WRITTEN
 CONSENT OF ERIKSSON ENGINEERING ASSOCIATES, LTD.



PLANT SCHEDULE

CANOPY TREES	BOTANICAL NAME / COMMON NAME	COND	SIZE	2015-07-22 08:45 QTY
CEL OCC	CELTIS OCCIDENTALIS / COMMON HACKBERRY	B # B	2.5" CAL	6
GIN PR2	GINKGO BILOBA 'PRINCETON SENTRY' / PRINCETON SENTRY GINKGO	B # B	2.5" CAL	1
GLE IN4	GLEDTISIA TRIACANTHOS INERMIS / THORNLESS COMMON HONEYLOCUST	B # B	2.5" CAL	5
QUE BIC	QUERCUS BICOLOR / SWAMP WHITE OAK	B # B	2.5" CAL	5

SEEDING SCHEDULE

	2015-07-22 08:45
LAWN (SEED & BLANKET)	62,115 SF
	100% -

LANDSCAPE NOTES:

- PLANT QUALITIES SHOWN IN THE PLANT SCHEDULE ARE FOR CONVENIENCE ONLY. THE CONTRACTOR IS RESPONSIBLE FOR PROVIDING AND INSTALLING ALL MATERIALS SHOWN ON THE PLAN AND SHALL NOT RELY ON THE PLANT SCHEDULE FOR DETERMINING QUALITIES.
- ALL PLANT MATERIALS SHALL BE NURSERY GROWN STOCK AND SHALL BE FREE FROM ANY DEFORMITIES, DISEASES OR INSECT DAMAGE. ANY MATERIALS WITH DAMAGED OR CROOKED/DISFIGURED LEADERS, BARK ABRASION, SUNSCALD, INSECT DAMAGE, ETC. ARE NOT ACCEPTABLE AND WILL BE REJECTED. TREES WITH MULTIPLE LEADERS WILL BE REJECTED UNLESS CALLED OUT IN THE PLANT SCHEDULE AS MULTI-STEM.
- ALL LANDSCAPE IMPROVEMENTS SHALL MEET MUNICIPALITY REQUIREMENTS AND GUIDELINES, WHICH SHALL BE VERIFIED BY MUNICIPAL AUTHORITIES.
- ALL PLANTING OPERATIONS SHALL BE COMPLETED IN ACCORDANCE WITH STANDARD HORTICULTURAL PRACTICES. THIS MAY INCLUDE, BUT NOT BE LIMITED TO, PROPER PLANTING BED AND TREE PIT PREPARATION, PLANTING MIX, PRUNING, STAKING AND GUYING, WRAPPING, SPRAYING, FERTILIZATION, PLANTING AND ADEQUATE MAINTENANCE OF MATERIALS DURING CONSTRUCTION ACTIVITIES.
- ALL PLANT MATERIALS SHALL BE INSPECTED AND APPROVED BY THE LANDSCAPE ARCHITECT PRIOR TO INSTALLATION. ANY MATERIALS INSTALLED WITHOUT APPROVAL MAY BE REJECTED.
- THE CONTRACTOR SHALL GUARANTEE PLANT MATERIALS FOR A PERIOD OF ONE YEAR FROM DATE OF ACCEPTANCE BY OWNER. THE CONTRACTOR SHALL OUTLINE PROPER MAINTENANCE PROCEDURES TO THE OWNER AT THE TIME OF ACCEPTANCE. DURING THE GUARANTEE PERIOD, DEAD OR DISEASED MATERIALS SHALL BE REPLACED AT NO COST TO THE OWNER. AT THE END OF THE GUARANTEE PERIOD THE CONTRACTOR SHALL OBTAIN FINAL ACCEPTANCE FROM THE OWNER.
- ANY EXISTING TREES TO BE RETAINED SHALL BE PROTECTED FROM SOIL COMPACTION AND OTHER DAMAGES THAT MAY OCCUR DURING CONSTRUCTION ACTIVITIES BY ERECTING FENCING AROUND SUCH MATERIALS AT A DISTANCE OF 8.5' FROM THE TRUNK.
- ALL GRASS, CLUMPS, OTHER VEGETATION, DEBRIS, STONES, ETC., SHALL BE RAKED OR OTHERWISE REMOVED FROM PLANTING AND LAWN AREAS PRIOR TO INITIATION OF INSTALLATION PROCEDURES.
- ANY AREAS TO BE LOAMED AND SEEDING WHICH HAVE NOT BEEN DISTURBED BY CONSTRUCTION ACTIVITIES SHALL RECEIVE 1" OF LOAM OVER SCARIFIED EXISTING SOILS. CARE SHOULD BE GIVEN TO NOT PLACE GREATER THAN 1" SOIL OVER EXPOSED ROOTS OF EXISTING TREES IN SUCH AREAS.
- THE CONTRACTOR SHALL VERIFY THE LOCATIONS OF ALL UNDERGROUND UTILITIES PRIOR TO INITIATING PLANTING OPERATIONS. THE CONTRACTOR SHALL REPAIR REPLACE AND UTILITY, PAVING, CURBING, ETC., WHICH IS DAMAGED DURING PLANTING OPERATIONS.
- SIZE AND GRADING STANDARDS OF PLANT MATERIALS SHALL CONFORM TO THE LATEST EDITION OF ANSI Z60.1, AMERICAN STANDARDS FOR NURSERY STOCK, BY THE AMERICAN NURSERY & LANDSCAPE ASSOCIATION.
- REFER TO PLAT OF SURVEY FOR LEGAL DESCRIPTION, BOUNDARY DIMENSIONS AND EXISTING CONDITIONS.
- ALL PLANT MATERIAL ON THIS PLANTING PLAN REPRESENTS THE INTENTION AND INTENSITY OF THE PROPOSED LANDSCAPE MATERIAL. THE EXACT SPECIES AND LOCATIONS MAY VARY IN THE FIELD DO TO MODIFICATIONS IN THE SITE IMPROVEMENTS AND THE AVAILABILITY OF PLANT MATERIAL AT THE TIME OF INSTALLATION. ANY SUCH CHANGES MUST FIRST BE APPROVED BY THE VILLAGE IN WRITING.
- ALL PLANT MATERIAL SHALL BE PLANTED WITH A MINIMUM OF SIX INCHES OF ORGANIC SOIL AND MULCHED WITH A SHREDDED BARK MATERIAL TO A MINIMUM 3" DEPTH.
- ALL BEDS SHALL BE EDGED, HAVE WEED PREEMERGENTS APPLIED AT THE RECOMMENDED RATE.
- ALL PARKWAYS AND PARKING LOT ISLANDS SHALL HAVE LAWN AS A GROUNDCOVER, UNLESS OTHERWISE NOTED.
- ALL LAWN AREAS ON THIS PLAN SHALL BE GRADED SMOOTH AND TOPPED WITH AT LEAST 4" OF TOPSOIL. ALL LAWN AREAS TO BE ESTABLISHED USING SEED UNLESS OTHERWISE NOTED.
- THIS LANDSCAPE PLAN ASSUMES THE SITE WILL BE PREPARED WITH TOP SOIL SUITABLE FOR THE ESTABLISHMENT OF THE LANDSCAPE MATERIAL PRESENTED ON THIS PLAN. IF ADDITIONAL TOP SOIL IS REQUIRED IT IS UP TO THE LANDSCAPE CONTRACTOR ON THE PROJECT TO PROVIDE, SPREAD AND PREPARE THE SITE AS NEEDED FOR THE IMPLEMENTATION OF THIS LANDSCAPE PLAN.
- CONTRACTORS MUST VERIFY ALL QUANTITIES AND OBTAIN ALL PROPER PERMITS AND LICENSES FROM THE PROPER AUTHORITIES.
- ALL MATERIAL MUST MEET INDUSTRY STANDARDS AND THE LANDSCAPE ARCHITECT HAS THE RIGHT TO REFUSE ANY POOR MATERIAL OR WORKSMANSHIP.
- LANDSCAPE ARCHITECT IS NOT RESPONSIBLE FOR UNSEEN SITE CONDITIONS.
- ALL PLANTINGS SHALL BE SPACED EQUAL DISTANT, BACK FILLED WITH AMENDED SOIL IN A HOLE TWICE THE ROOTBALL DIAMETER, WATERED, FERTILIZED, PRUNED, AND HAVE ALL TAGS AND ROPES REMOVED.
- TREES SHALL BE STAKED AND GUYED, AND HAVE A WATERING SAUCER AT BASE.
- ALL BEDS TO BE BERMED 12" TO 24" ABOVE GRADE AND MEET DRAINAGE REQUIREMENTS.
- LAWN AND BED AREAS SHALL BE ROTOTILLED, RAKED OF CLUMPS AND DEBRIS.
- REMOVE ALL DEAD AND DISEASED PLANT MATERIAL FROM SITE AND DISPOSE OF PROPERLY.
- PRUNE AND FERTILIZE ALL EXISTING VEGETATION TO REMAIN ON SITE.



**ERIKSSON
ENGINEERING
ASSOCIATES, LTD.**

145 COMMERCE DRIVE, SUITE A
 GRAYSLAKE, ILLINOIS 60030
 PHONE: (847) 223-4804
 FAX: (847) 223-4864
 EMAIL: INFO@EAA-LTD.COM
 PROFESSIONAL DESIGN FIRM
 LICENSE NO. 184-003220
 EXPIRES: 04/30/2017

**IVY HILL ELEMENTARY SCHOOL
ADDITION AND RENOVATIONS**
 2211 N. Burke Dr.
 Arlington Heights, Illinois

Reserved for Seal:

Expiration Date: _____

No.	Date	Description

© ERIKSSON ENGINEERING ASSOCIATES, LTD., 2015 THIS PLAN & DESIGN ARE THE PROPERTY OF ERIKSSON ENGINEERING ASSOCIATES, LTD. NO REPRODUCTION OF ANY PART OF THESE PLANS IS PERMITTED WITHOUT THE WRITTEN CONSENT OF ERIKSSON ENGINEERING ASSOCIATES, LTD.	
Design By:	SG
Date:	06/06/15
Approved By:	KC
Project No.:	

Sheet Title:
**LANDSCAPE
PLAN**

Sheet No:
L100