

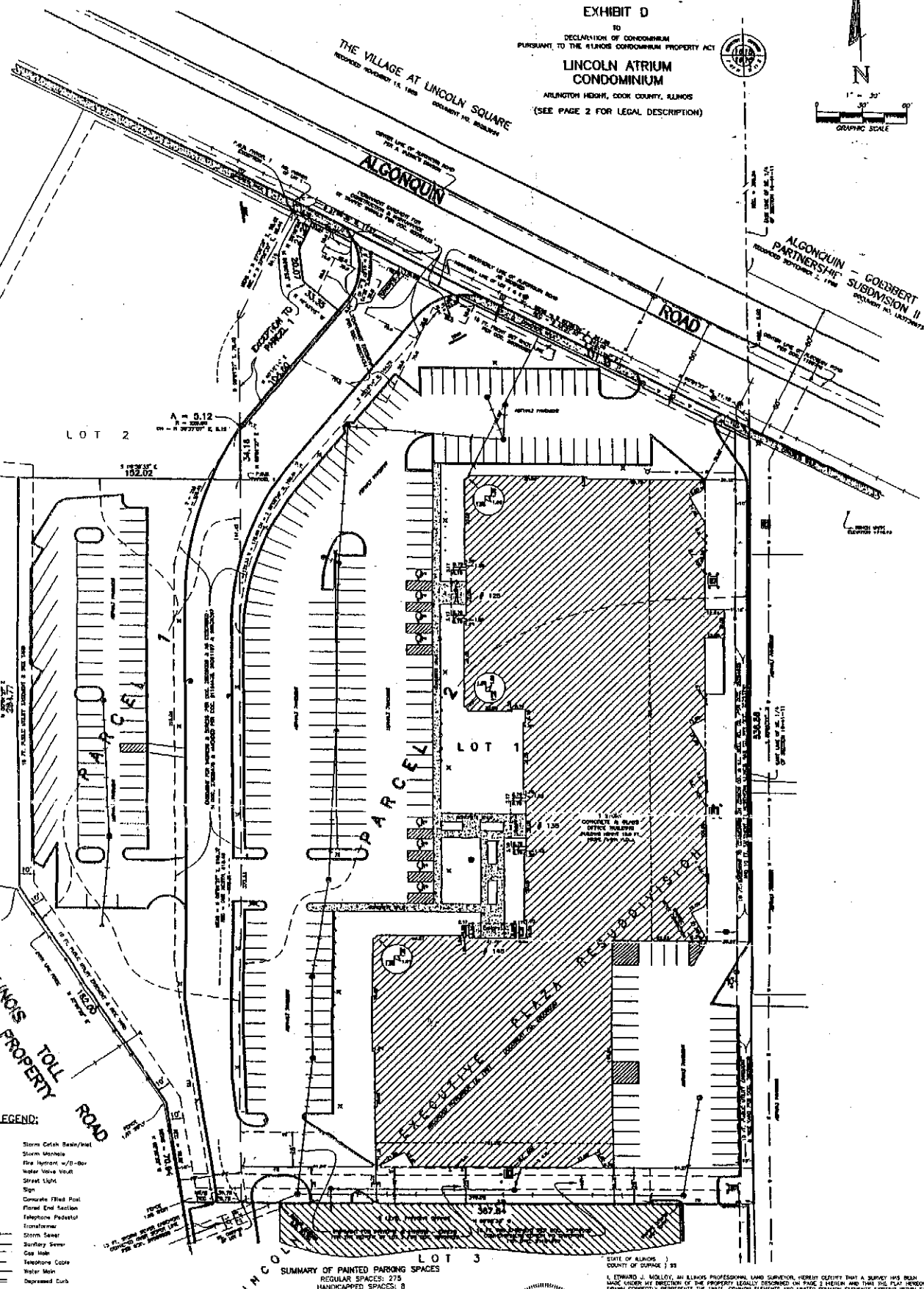
PLAT OF SURVEY

EXHIBIT D

TO
 DECLARATION OF CONDOMINIUM
 PURSUANT TO THE ILLINOIS CONDOMINIUM PROPERTY ACT

LINCOLN ATRIUM CONDOMINIUM

ARLINGTON HEIGHTS, COOK COUNTY, ILLINOIS
 (SEE PAGE 2 FOR LEGAL DESCRIPTION)



- LEGEND:**
- Storm Catch Basin/Inlet
 - Storm Manhole
 - 15" Diameter 42" Deep
 - Water Valve Vault
 - Street Light
 - Sign
 - Concrete Final Post
 - Flood End Section
 - Telephone Pedestal
 - Transformer
 - Storm Sewer
 - Sanitary Sewer
 - Gas Main
 - Telephone Core
 - Water Main
 - Depressed Curb

SUMMARY OF PAINTED PARKING SPACES

REGULAR SPACES:	278
HANDICAPPED SPACES:	8
TOTAL:	283

AREA SUMMARY OF TRACT SURVEYED

PARCEL 1 =	61,707 SQUARE FEET OR 1.417 ACRES
PARCEL 2 =	210,689 SQUARE FEET OR 4.838 ACRES
TOTAL =	272,396 SQUARE FEET OR 6.253 ACRES



I, EDWARD J. MOLLOY, an Illinois Professional Land Surveyor, HEREBY CERTIFY THAT A SURVEY HAS BEEN MADE UNDER MY DIRECTION OF THE PROPERTY LEGALLY DESCRIBED ON PAGE 2 HEREIN AND THAT THIS PLAT HEREON TRULY CORRECTLY REPRESENTS THE UNITS, COMMON ELEMENTS AND LIMITED COMMON ELEMENTS WITHIN SAID PROPERTY FOR PURPOSES OF THE ILLINOIS CONDOMINIUM PROPERTY ACT. DIMENSIONS ARE SHOWN IN FEET AND DECIMAL FRACTIONS THEREOF.

DATED AT BENSENVILLE, ILLINOIS, THIS 11TH DAY OF FEBRUARY, A.D. 2004.

Edward J. Molloy
 EDWARD J. MOLLOY
 ILLINOIS PROFESSIONAL LAND SURVEYOR NO. 1811
 MY LICENSE EXPIRES NOVEMBER 30, 2004 AND IS RENEWABLE