

THIS DRAWING IS AN INSTRUMENT OF SERVICE AND IS THE PROPERTY OF THE ARCHITECT AND SHALL NOT BE REPRODUCED WITHOUT THE ARCHITECT'S PERMISSION AND UNLESS THE NAME OF THE ARCHITECT CONTRACTOR SHALL VERIFY ALL DIMENSIONS AND CONDITIONS AT THE SITE BEFORE PROCEEDING WITH THE WORK.

DESIGN PHASE

r|ps architects®
 architecture • master planning • interior design
 250 VALLEYBROOK DRIVE, LANCASTER, PA 17601
 717-560-9501 FAX: 717-560-2373 RLPB, LLP

REVISIONS & ADDITIONS TO:
THE MOORINGS OF ARLINGTON HEIGHTS
 FOR
PRESBYTERIAN HOMES
 811 EAST CENTRAL ROAD, ARLINGTON HEIGHTS, IL 60005
 DRAWN BY: C.M.F. CHECKED BY: C.S.L. APPROVED BY: M.J.R.

NO.	DATE	DESCRIPTION
1	03/24/15	In-Progress Pricing Set - Not For Construction
1	05/01/15	In-Progress Construction Not For Construction

LOCATION MAP
 AS NOTED DATE: 4/27/2015



ERIKSSON ENGINEERING ASSOCIATES, LTD.
 145 COMMERCE DRIVE, SUITE A
 GRAYSLAKE, ILLINOIS 60030
 PHONE (847) 223-4804
 FAX (847) 223-4864
 EMAIL INFO@EEA-LTD.COM

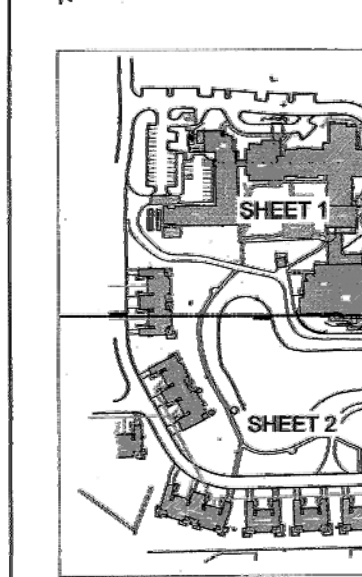
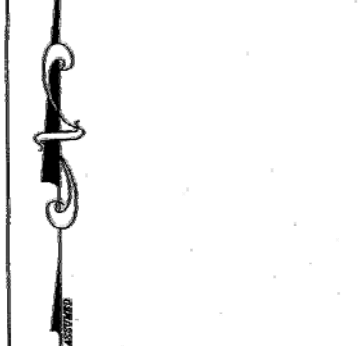
DRAWING NO.: **C10.0**
 COMMISSION NO.: 2014104

Legend

- Storm MH
- Storm CB
- Storm Inlet
- Storm Inlet
- Sun MH
- San Clean Out
- Water Valve Vault
- Water MH
- Water Buffalo Box
- Water Hand Hole
- Water Meter
- Water Fire Hydrant
- Telephone MH
- Telephone Vault
- Telephone Pedestal
- Public Telephone
- Combination Pedestal
- Utility Pole
- Electric Manhole
- Electric MH
- Electric Vault
- Electric Meter
- Electric Pad
- Electric Pedestal
- Electric Light Pole
- Electric Traffic Signal
- ▲ Pole with Traffic Signal
- Electric Traffic Control Box
- Electric Traffic Vault
- Gas Buffalo Box
- Gas Hand Hole
- Gas Meter
- Gas Valve
- Gas MH
- Gas Vault
- Gas Buffalo Box
- Cable TV Pedestal
- Parking Meter
- Sign Post
- Mail Box
- Bangor Post
- Guy Anchor
- Soil Boring
- ▲ Monumentation Found
- ▲ Monumentation Established
- ▲ Undersized Manhole
- ▲ Auto Sprinkler
- ▲ Hose Connection
- ▲ Fire Alarm
- ▲ Flag Pole
- ▲ Tree - Deciduous
- ▲ Tree - Evergreen

A-ASPHALT ELEVATION
 CE-CONCRETE ELEVATION
 FE-FINISHED FLOOR ELEVATION
 W-WALKWAY ELEVATION
 X-CONCRETE ELEVATION
 TOE-TOE OF SLOPE ELEVATION
 TOB-TOP OF BANK ELEVATION
 C-CURB ELEVATION
 Q-QUATERS ELEVATION
 EL-ELEVATION

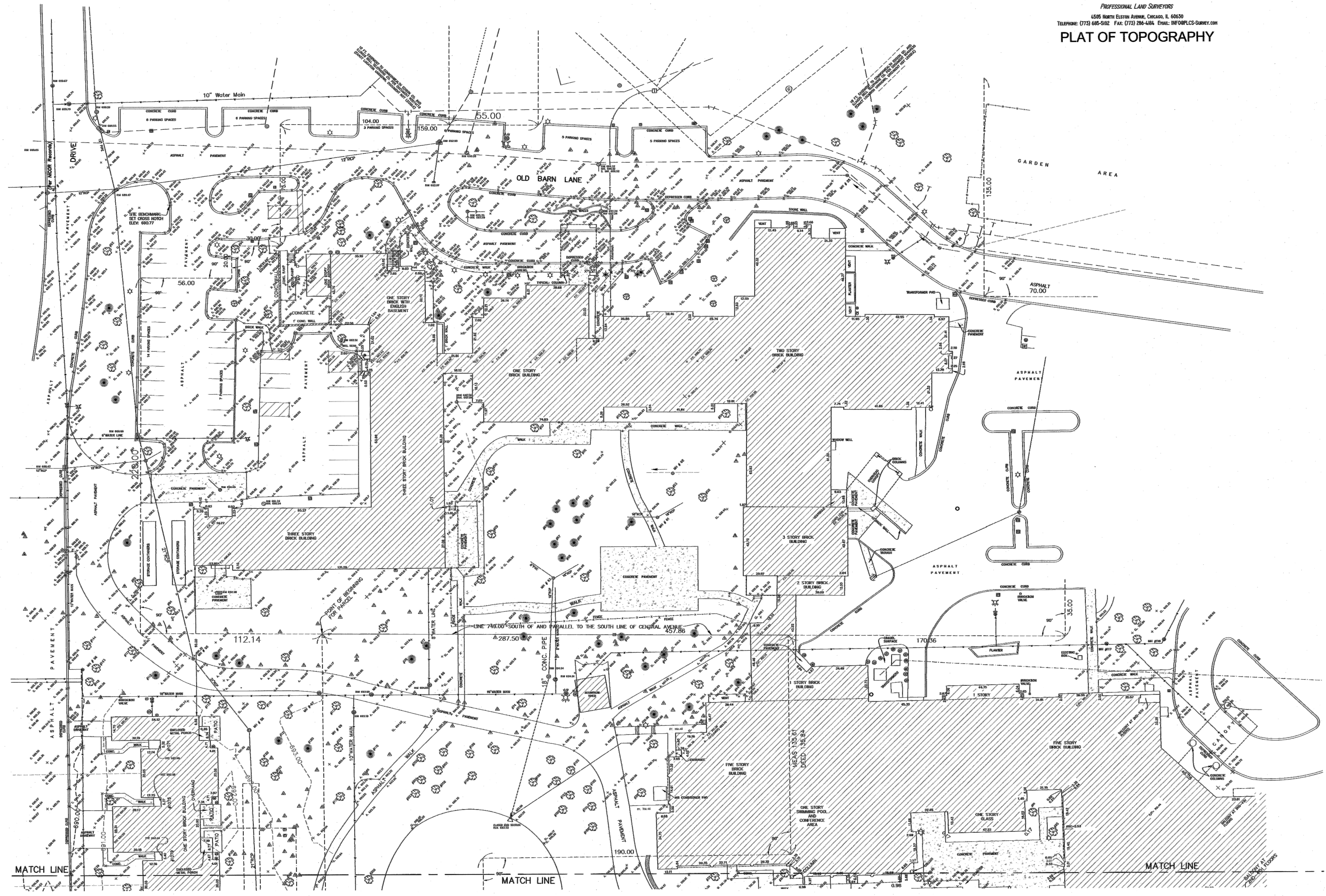
GRAPHIC SCALE
 0 10 20 30 40 50
 (FEET)
 0 10 20 30 40 50
 (METERS)



LOCATION MAP

GREMLEY & BIEDERMANN
 A Division of
PLCS Corporation
 LICENSE NO. 04-0002
 PROFESSIONAL LAND SURVEYORS
 4505 NORTH ELSTON AVENUE, CHICAGO, IL 60630
 TELEPHONE: (773) 646-5102 FAX: (773) 284-4384 EMAIL: INFO@PLCS-SURVEY.COM

PLAT OF TOPOGRAPHY

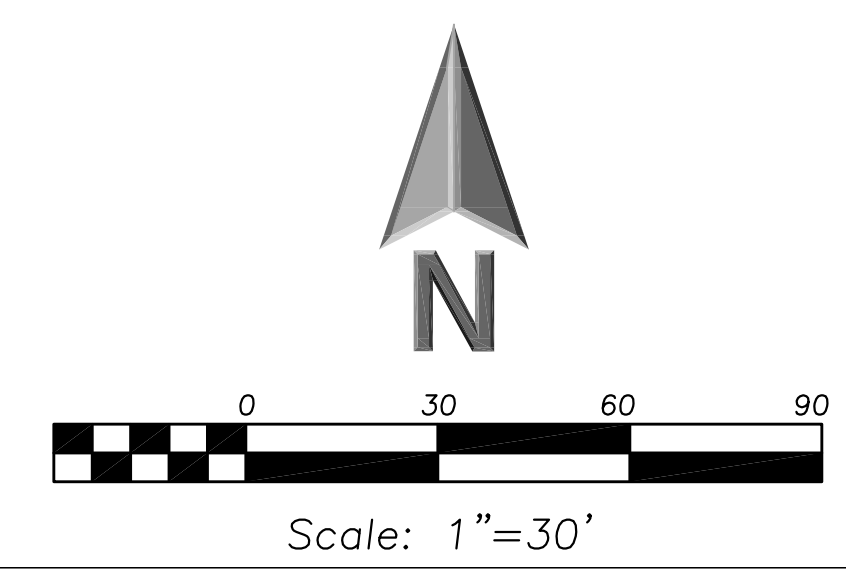


ADDITIONAL TOPOGRAPHY ADDED MAY 9, 2015
 DRAWN BY: [Name]
 CHECKED BY: [Name]
 DATE: 06/22/2015
GREMLEY & BIEDERMANN
 PLCS CORPORATION
 4505 NORTH ELSTON AVENUE, CHICAGO, IL 60630
 TELEPHONE: (773) 646-5102 FAX: (773) 284-4384 EMAIL: INFO@PLCS-SURVEY.COM
 ORIGINAL: 2015-20606-001
 SCALE: AS SHOWN
 SHEET: 1 OF 2

SURVEY NOTES:
 Note H, S, M, denotes Record and Measured distances respectively.
 Distances are marked in feet and decimal parts thereof. Compare all points BEFORE building by same and at once report any differences REPCOME change is done.
 For easements, building lines and other conditions not shown on survey plat refer to your contract, deed, conveyance, title policy and local building regulations.
 NO dimensions shall be assumed by scale measurement upon this plat.
 Monumentation or witness points were not set at the client's request.
 Unless otherwise noted hereon the Dearing Book, Elevation Datum and Coordinate Datum if used is ASSUMED.
 COPYRIGHT CHICAGO GUARANTEE SURVEY COMPANY 2015 "All Rights Reserved"

NO.	DATE	DESCRIPTION
1	06/22/2015	PUD Application Submittal

State of Illinois
 County of Cook
 We, GREMLEY & BIEDERMANN, INC. hereby certify that we have measured the elevations and features shown hereon and that the plat hereon shown is a correct representation thereof.
 Field measurements completed on MAY 9, 2015.
 Signed on May 19, 2015
 By: [Signature]
 Professional Land Surveyor No. 22602
 My license expires November 30, 2016
 This professional opinion conforms to the current Illinois minimum standards for topographic surveys.



THIS DRAWING IS AN INSTRUMENT OF SERVICE. IT IS THE PROPERTY OF GREMLEY & BIEDERMANN, INC. AND IS NOT TO BE REPRODUCED OR TRANSMITTED IN ANY FORM OR BY ANY MEANS, ELECTRONIC OR MECHANICAL, WITHOUT THE EXPRESS WRITTEN PERMISSION AND UNDER THE SIGNATURE OF THE ARCHITECT.

CONTRACTOR SHALL VERIFY ALL DIMENSIONS AND CONDITIONS AT THE SITE BEFORE PROCEEDING WITH THE WORK.

DESIGN PHASE

rlps architects
 architecture + master planning + interior design
 250 VALLEYBROOK DRIVE, LANCASTER, PA 17601
 717-560-9501 FAX: 717-560-2373 RLPS, LLP

REVISIONS & ADDITIONS TO:
THE MOORINGS OF ARLINGTON HEIGHTS
 FOR
PRESBYTERIAN HOMES
 811 EAST CENTRAL ROAD, ARLINGTON HEIGHTS, IL 60005
 DRAWN BY: C.M.F. CHECKED BY: C.S.L. APPROVED BY: M.J.R.

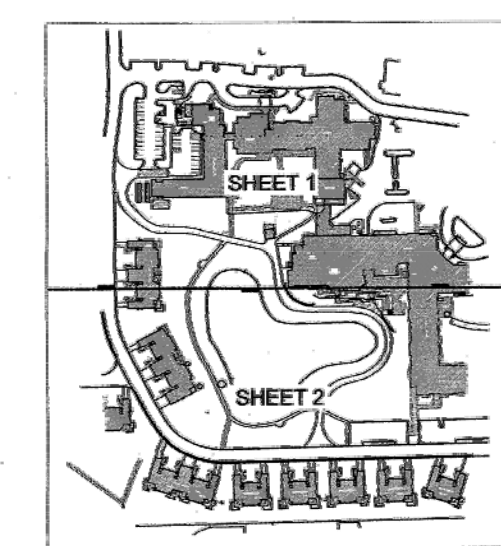
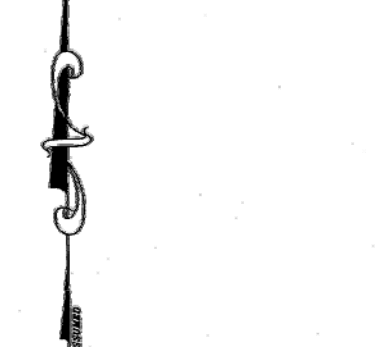
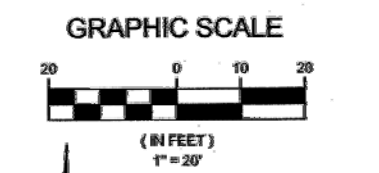
REVISIONS
 NO. DATE DESCRIPTION
 1 06/22/2015 PUD Application Submittal

PLAT OF SURVEY (1 OF 2)
 DRAWING NO.: **C9.0**
 COMMISSION NO.: 2014104
 SCALE: AS NOTED
 DATE: 4/27/2015

Legend:

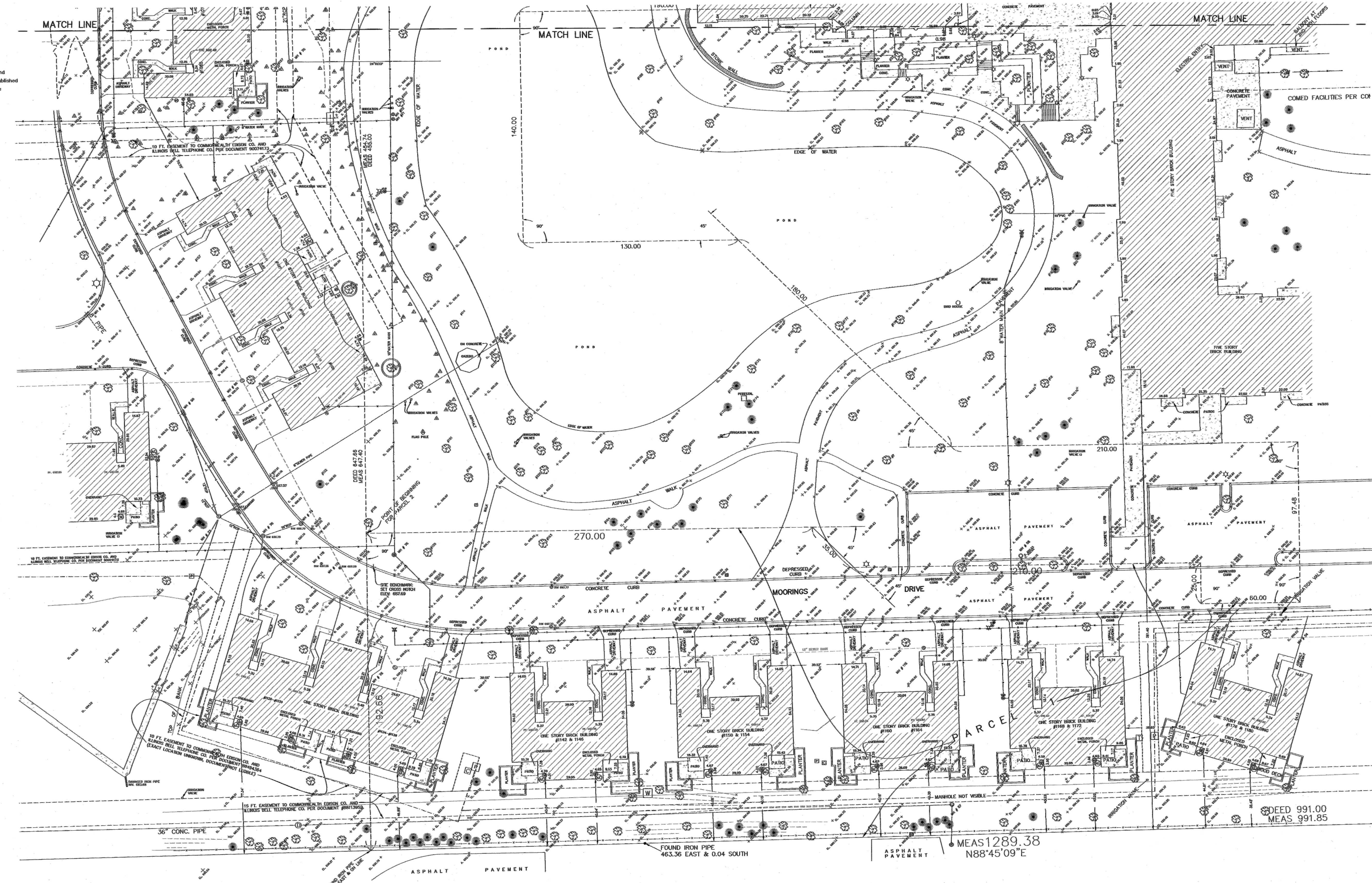
- Storm MH
- Storm CB
- Storm Inlet
- San MH
- San Clean Out
- Water Valve Vault
- Water MH
- Water Buffalo Box
- Water Hand Hole
- Water Meter
- Telephone MH
- Telephone Vault
- Telephone Pedestal
- Public Telephone
- Combination Pedestal
- Utility Pole
- Electric Manhole
- Electric MH
- Electric Vault
- Electric Sprinkler
- Electric Meter
- Electric Pod
- Electric Pedestal
- Electric Light Pole
- Electric Traffic Signal
- ★ Pole with Traffic Signal
- ⊠ Electric Traffic Control Box
- ⊠ Electric Traffic Vault
- ⊠ Gas Buffalo Box
- ⊠ Gas Hand Hole
- ⊠ Gas Meter
- ⊠ Gas Valve
- ⊠ Gas MH
- ⊠ Gas Vault
- ⊠ Gas Buffalo Box
- ⊠ Cable TV Pedestal
- ⊠ Parking Meter
- ⊠ Sign Post
- ⊠ Mail Box
- ⊠ Bumper Post
- ⊠ Guy Anchor
- ⊠ Soil Boring
- ⊠ Monumentation Found
- ⊠ Monumentation Established
- ⊠ Unconformal Markings
- ⊠ Auto Sprinkler
- ⊠ Hose Connection
- ⊠ Fire Alarm
- ⊠ Flag Pole
- ⊠ Tree - Deciduous
- ⊠ Tree - Evergreen

- A-ASPHALT ELEVATION
- GL-GRASS ELEVATION
- PF-FINISHED FLOOR ELEVATION
- W-WALK ELEVATION
- Z-CONCRETE ELEVATION
- TOE-TOP OF BANK ELEVATION
- TOE-TOP OF BANK ELEVATION
- C-CURB ELEVATION
- CH-CHUTE ELEVATION
- EL-ELEVATION



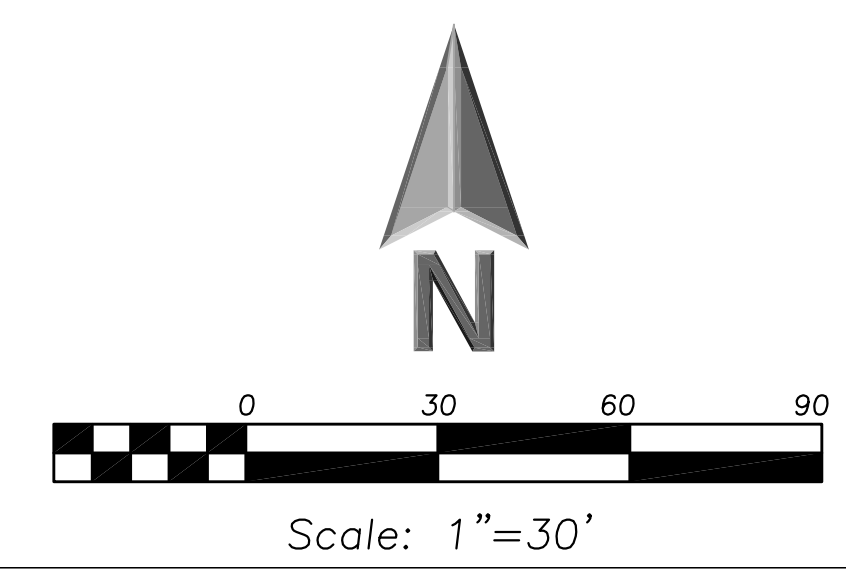
GREMLEY & BIEDERMANN
 A Division of
PLCS Corporation
 PROFESSIONAL LAND SURVEYORS
 6505 North Elston Avenue, Chicago, IL 60630
 Telephone: (773) 462-5200 Fax: (773) 298-1400 Email: INFO@PLCS-SURVEY.COM

PLAT OF TOPOGRAPHY



SURVEY NOTES:
 Make R. & M. denote Record and Measured distances respectively.
 Distances are recalled in feet and decimal parts thereof. Compare all points BEFORE building by same and at once report any differences BEFORE damage is done.
 For easements, building lines and other restrictions not shown on survey plat refer to your original deed, contract, site plan and local building line regulations.
 NO dimensions shall be assumed by scale measurement upon this plat.
 Monumentation or witness points were not set at the client's request.
 Unless otherwise noted between the Bearing Basis, Elevation Datum and Coordinate Datum if used to ASSUME.
 COPYRIGHT CHICAGO GUARANTEE SURVEY COMPANY 2015 "All Rights Reserved"

NO.	DATE	DESCRIPTION
1	06/22/2015	PUD Application Submittal



THIS DRAWING IS AN INSTRUMENT OF SERVICE. IT IS THE PROPERTY OF GREMLEY & BIEDERMANN, A DIVISION OF PLCS CORPORATION. IT IS TO BE USED ONLY FOR THE PROJECT AND SITE SPECIFICALLY IDENTIFIED HEREIN. IT IS NOT TO BE REPRODUCED, COPIED, OR TRANSMITTED IN ANY FORM OR BY ANY MEANS, ELECTRONIC OR MECHANICAL, WITHOUT THE EXPRESS WRITTEN PERMISSION AND UNDER THE SUPERVISION OF THE ARCHITECT OR SURVEYOR. THE ARCHITECT OR SURVEYOR'S NAME OF THE ARCHITECT OR SURVEYOR SHALL BE PRINTED AT THE BOTTOM OF THIS DRAWING. ALL DIMENSIONS AND CONDITIONS AT THE SITE BEFORE PROCEEDING WITH THE WORK.

DESIGN PHASE

rlps architects®
 architecture • master planning • interior design
 250 VALLEYBROOK DRIVE, LANCASTER, PA 17601
 717-560-9501 FAX: 717-560-2373 RLPS, LLP

RENOVATIONS & ADDITIONS TO:
THE MOORINGS OF ARLINGTON HEIGHTS
 FOR
PRESBYTERIAN HOMES
 811 EAST CENTRAL ROAD, ARLINGTON HEIGHTS, IL 60005
 DRAWN BY: C.M.F. REGISTERED ARCHITECT BY: M.J.R. APPROVED BY: C.S.L.

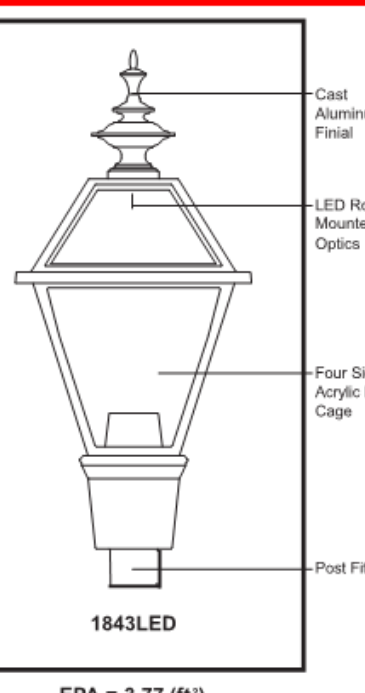
PLAT OF SURVEY (2 OF 2)

C9.1
 DRAWING NO.: 2014104
 AS NOTED
 DATE: 4/27/2015

Symbol	Label	QTY	Catalog Number	Description	Lamp	Number Lamps	Lumens per Lamp	LLF	Wattage	Polar Plot
	B1 (S)	6	DSXB LED 16C 350 30K SYM	D-SERIES BOLLARD WITH 16 3000K LEDS OPERATED AT 350mA AND SYMMETRIC DISTRIBUTION	LED	1	922.606	0.8	20	
	B1 (A)	12	DSXB LED 12C 700 30K ASY	D-SERIES BOLLARD WITH 12 3000K LEDS OPERATED AT 700mA AND ASYMMETRIC DISTRIBUTION	LED	1	1262.607	0.8	31	
○	S1 (V)	15	1843LED/6A1R45T5/PA	112 WHITE CREE LEDS (GARC & IRND)W/TYPER V OPTICS/HEATSINK ROOF TOP OPTIC 1843 LUMINAIRE W/PRISMATIC ACRYLIC LENSES ADVANCE DRIVER #LEDINTA0700C210FO ELEC:120V 1.054A 126.2W		1	6751.532	0.8	126	
○	S1 (III)	12	1843LED/GARC45T3/PA	84 WHITE CREE LEDS (GARCS)W/TYPER III OPTICS/HEATSINK ROOF TOP OPTIC 1843 LUMINAIRE W/PRISMATIC ACRYLIC LENSES ADVANCE DRIVER #LEDINTA0700C210FO ELEC:120V .812A 97.2W		1	4434.133	0.8	97	

1843 LED CARSON CITY SERIES S1 (III) & S1 (V)

- LUMINAIRE DESIGN**
- The 1843 LED Carson City series is large scale, traditionally styled colonial fixture featuring a tapered four-sided cage and roof.
 - The four-paneled roof shall be appointed with a decorative cast aluminum finial.
 - The luminaire shall measure 18 1/2" wide and 41 1/2" tall.
 - The luminaire shall have a hinged roof for easy inside access.
 - The luminaire shall be supplied with line-ground, line-neutral and neutral-ground electrical surge protection in accordance with IEEE/ANSI C82.41.2 guidelines.
 - The luminaire shall be U.L. or E.T.L. listed in U.S. and Canada.



- POST FITTER**
- The fitter or base shall be heavy wall cast aluminum, alloy for high tensile strength.
 - The fitter shall have an inside diameter opening to accept a 3" diameter pole or tenon. When ordered with a Sternberg aluminum pole, the fitter shall be secured to the pole top or tenon with set screws.

- DRIVER HOUSING**
- The LED driver housing shall be heavy wall cast aluminum for high tensile strength.
 - The LED driver shall be attached to the driver housing to ensure high capacity heat sinking of driver thermals, keeping the driver cooler and ensuring long life.
 - The LED driver shall be supplied with a quick-disconnect electrical connector on the power supply, providing an easy power connection.

- LIGHT SOURCES**
- The luminaire shall use high output, high brightness LEDs.
 - The LEDs shall be mounted in arrays, on printed circuit boards designed to maximize heat transfer to the heat sink surface.
 - The LED arrays shall be mounted to minimize up-light.
 - The LEDs shall be attached to the printed circuit board with not less than 90% pure silver to insure optimal electrical and thermal conductivity.
 - The LEDs and printed circuit boards shall be protected from moisture and corrosion by a conformal coating of 1 to 3 mils.
 - The LEDs and printed circuit board construction shall be environmentally friendly and 100% recyclable. They shall not contain lead, mercury or any other hazardous substances and shall be RoHS compliant.
 - The LED life rating shall be determined in accordance with IESNA LM-80.

EPA = 3.77 (ft)
WEIGHT = 95 LBS

LIST NO. 1843 LED CARSON CITY SERIES

(Continued on next page)

B1(A) & B1(S)



Specifications
 Diameter: 6" Round
 Height: 42"
 Weight: 27 lbs
 Inset: 12.5"

Introduction
 The D-Series LED Bollard is a stylish, energy-saving, long-life solution designed to perform the way a bollard should—with zero uplight. An optical lens forward, the full cut-off luminaire will meet the most stringent of lighting codes. The D-Series LED Bollard's rugged construction, durable finish and long-lasting LEDs will provide years of maintenance-free service.

Ordering Information EXAMPLE: DSXB LED 16C 700 40K SYM W/OLT DB/DD

Item	Qty	Part Number	Description	Notes
1	1	DSXB LED 16C 700 40K SYM	D-Series Bollard with 16 4000K LEDs	
2	1	W/OLT DB/DD	W/OLT DB/DD	

- B1 (A) DSXB LED 12C 700 30K ASY**
- B1 (S) DSXB LED 16C 350 30K SYM**

Accessories
 #8810 Anti-theft device
 #8811 Anti-theft device

- NOTES**
- Only available in the US, 48 states.
 - Only available in the US, 48 states.
 - Only available in the US, 48 states.
 - Not available with ETC.
 - W/OLT DB/DD requires the use of a 120V/277V 50/60 Hz transformer.
 - W/OLT DB/DD requires the use of a 120V/277V 50/60 Hz transformer.
 - W/OLT DB/DD requires the use of a 120V/277V 50/60 Hz transformer.
 - W/OLT DB/DD requires the use of a 120V/277V 50/60 Hz transformer.
 - W/OLT DB/DD requires the use of a 120V/277V 50/60 Hz transformer.