

SITE PLAN
SCALE: 1/8" = 1'-0"



REVISIONS:
DRAWN BY:
LL
CHECKED BY:

SITE PLAN

1510 E NORTHWEST HWY
ARLINGTON HEIGHTS, IL

ARCHITECTURE PLANNING ARCHITECTURAL ENGINEERING
Red Architects Ltd
929 N. Damen Ave.
Chicago IL 60622
773 772 2756 office
773 772 2854 fax

PROJECT:
SCALE: 1/8" = 1'-0"
DATE:

SHEET:
T1

REVISIONS:

DRAWN BY:
LL

CHECKED BY:

FRONT AND PARTIAL REAR
ELEVATION

1510 E NORTHWEST HWY
ARLINGTON HEIGHTS, IL

ARCHITECTURE PLANNING ARCHITECTURAL ENGINEERING

Red Architects Ltd

929 N. Damen Ave.
Chicago, IL 60622
773.772.2756 office
773.772.2554 fax

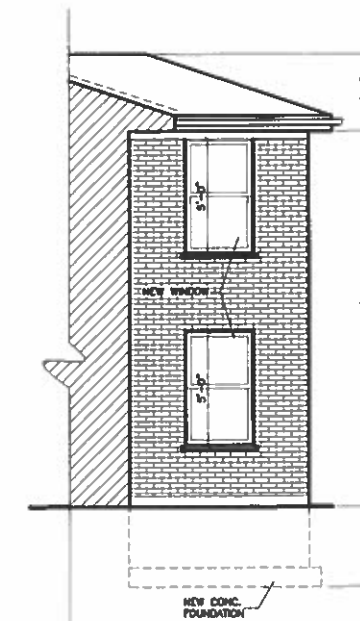
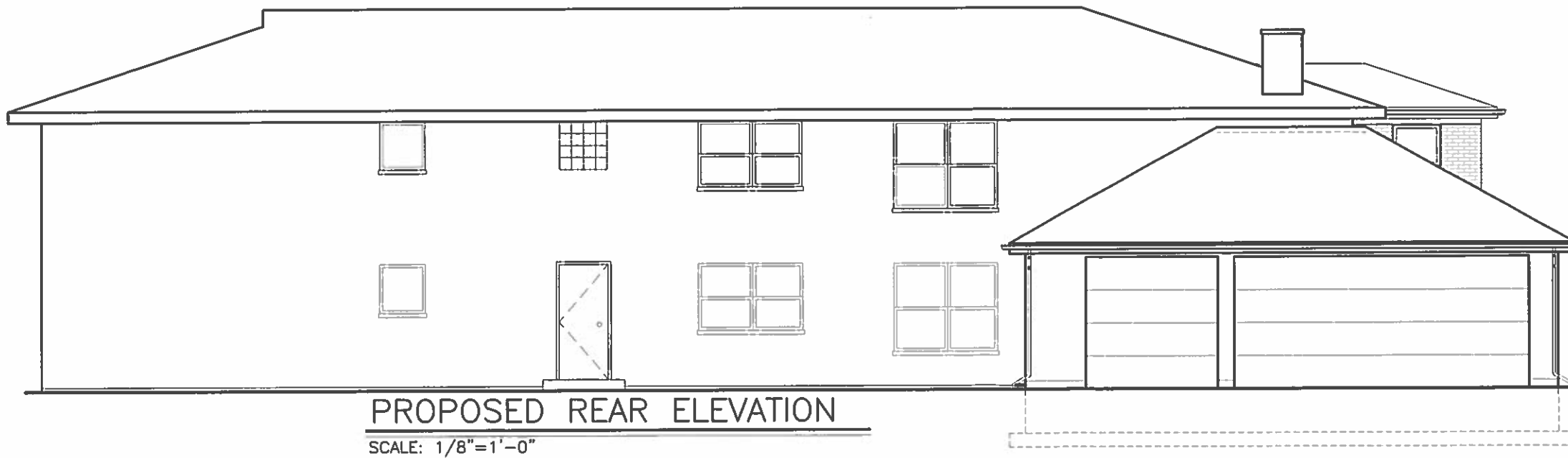
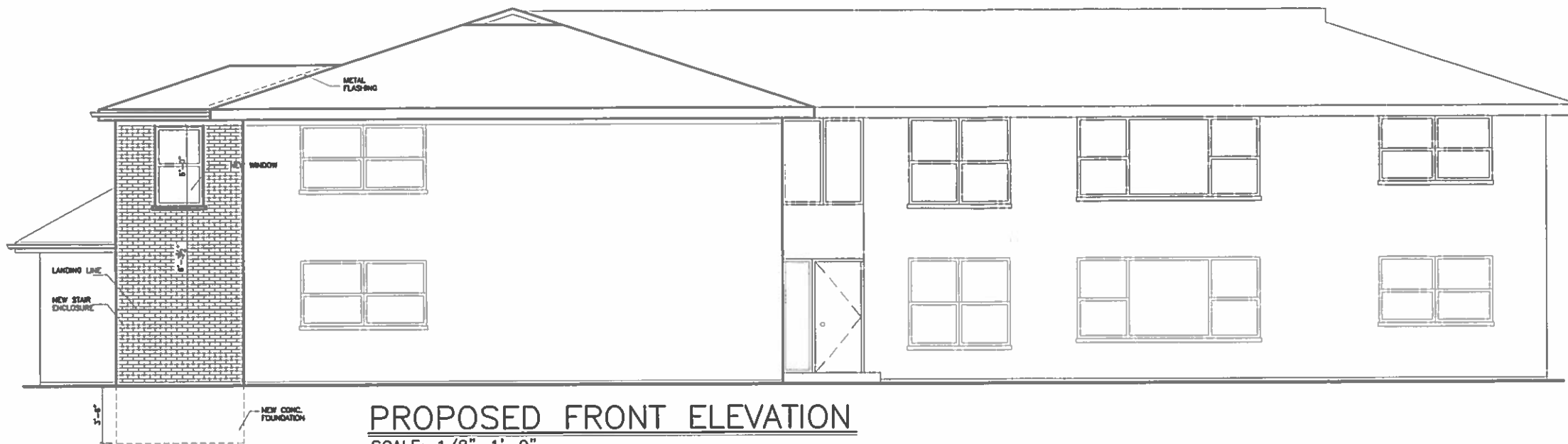
PROJECT:

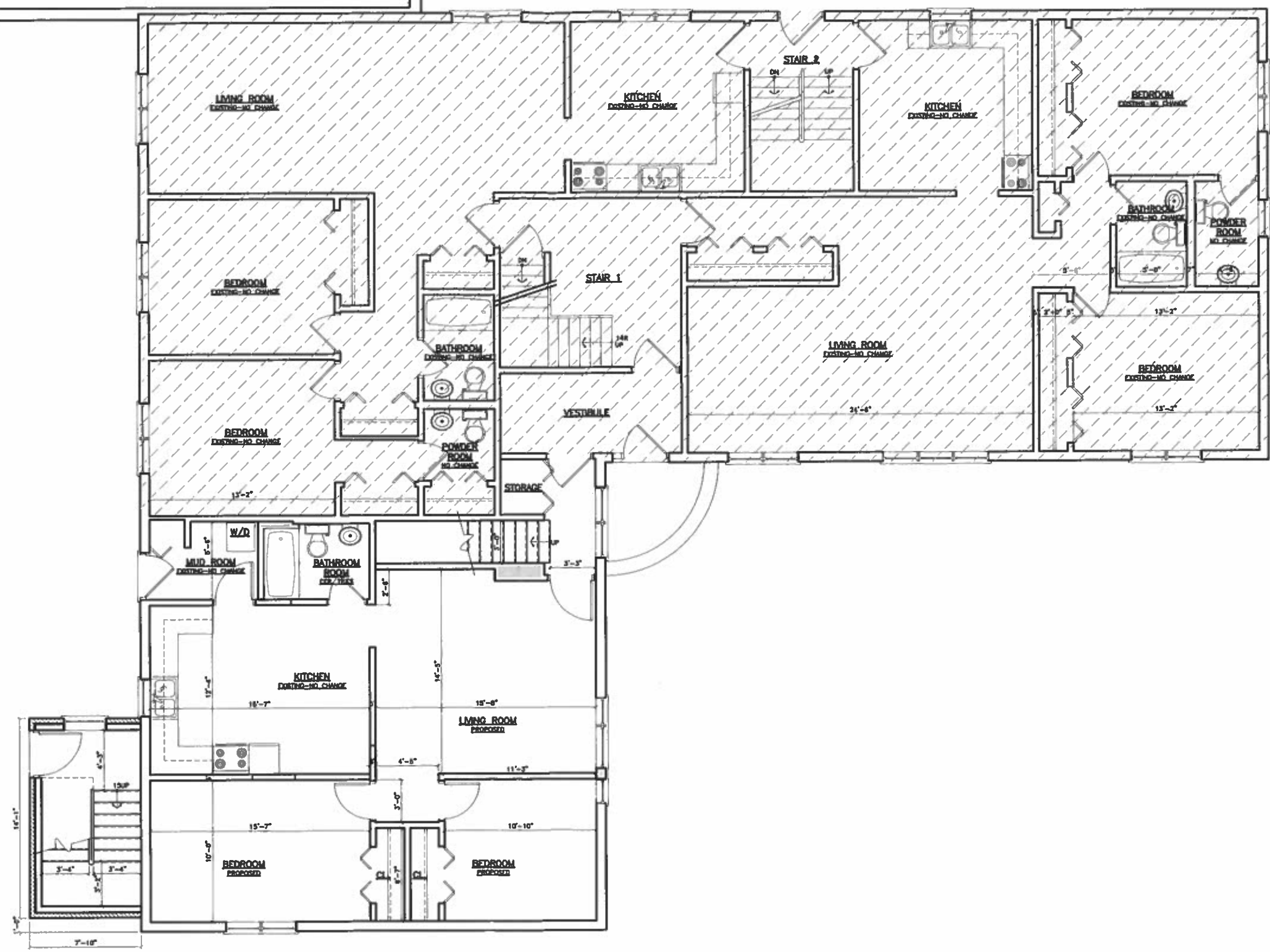
SCALE:

DATE:

SHEET:

A1





PROPOSED FIRST FLOOR PLAN
 SCALE: 1/8" = 1'-0"



NOT IN CONTRACT
 -NO WORK

REVISIONS:
 DRAWN BY:
 LL
 CHECKED BY:

**PROPOSED FIRST FLOOR
 PLAN**

1510 E NORTHWEST HWY
 ARLINGTON HEIGHTS, IL

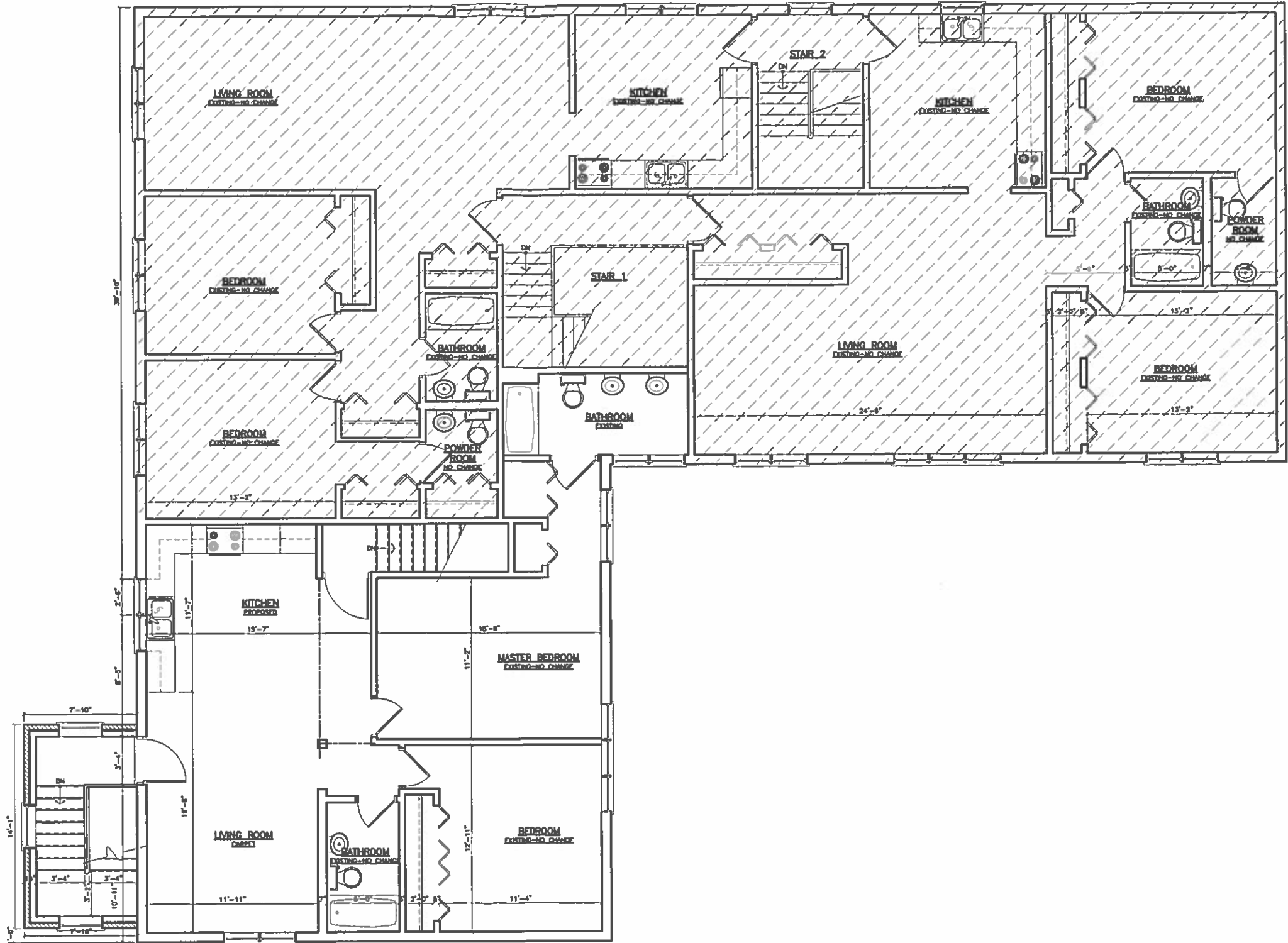
ARCHITECTURE PLANNING ARCHITECTURAL ENGINEERING

Red Architects Ltd

773 772 2758 office
 773 772 2854 fax
 929 N. Damen Ave.
 Chicago IL 60622

PROJECT:
 SCALE:
 DATE:
 SHEET:

A3



PROPOSED SECOND FLOOR PLAN

SCALE: 1/4" = 1'-0"



NOT IN CONTRACT
-NO WORK

REVISIONS:
DRAWN BY:
LL
CHECKED BY:

PROPOSED SECOND
FLOOR PLAN

1510 E NORTHWEST HWY
ARLINGTON HEIGHTS, IL

ARCHITECTURE PLANNING ARCHITECTURAL ENGINEERING
Red Architects Ltd
929 N. Damen Ave.
Chicago IL 60622
773.772.2156 office
773.772.2154 fax

PROJECT:
SCALE:
DATE:

SHEET:
A4