







-  Existing Trees
-  New Trees
-  District Gateway Monument
-  Perimeter Landscape Trees (5' MIN. WIDTH)
-  Perimeter Landscape Buffer (Poor Condition)

PUBLIC IMPROVEMENT OPPORTUNITES:


Infill Parkway Trees

-  New parkway trees 25'-40' o.c. (trees planted according to IDOT guidelines)

New Landscape Medians

-  Raised curbed landscape medians with trees, shrubs, grasses, and perennials. District gateway feature opportunity. (See sheet M1 Median Enlargement)

District Gateway Signage (S1)

-  Decorative gateway signage intergrated into landscape medians and banners. (see sheet S1 District Gateway Signage for details)

PRIVATE IMPROVEMENT OPPORTUNITES:

Perimeter Landscape Trees (P1-P4)

-  New trees within the Perimeter Landscape Buffer (25'-40' o.c.)

Internal Pedestrian Access (A1)

-  Improved pedestrian connections, internal landscape, and commercial frontage streetscape





Photo example of internally lit street sign with Village logo.



Photo example of crosswalk paving treatment



Photo example of median sculpture installation.

Corner Intersection Improvements

- ① Improvements at corners include:
 - a) Decorative textured pavement with ADA accessibility
 - b) Traffic signals with pedestrian countdown timers and LED street signs
 - c) Landscape walls

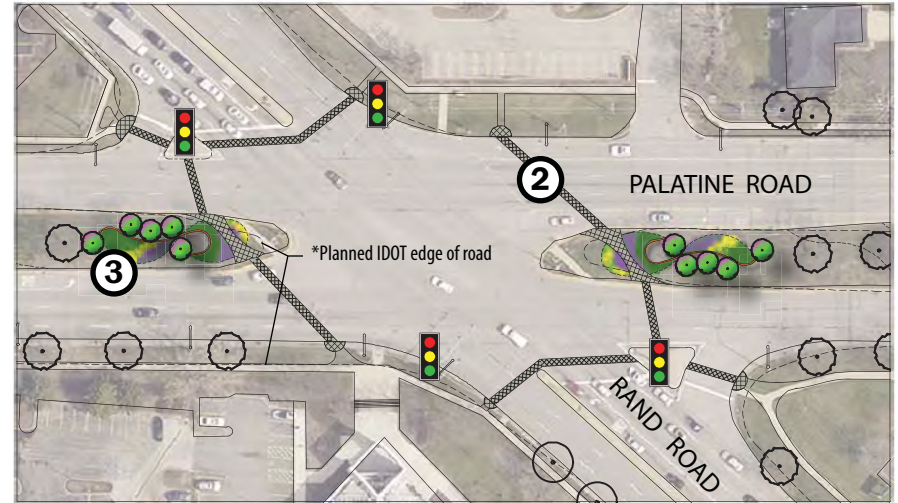
Pedestrian Crosswalks

- ② Decorative textured crosswalks with median pedestrian refuge islands.

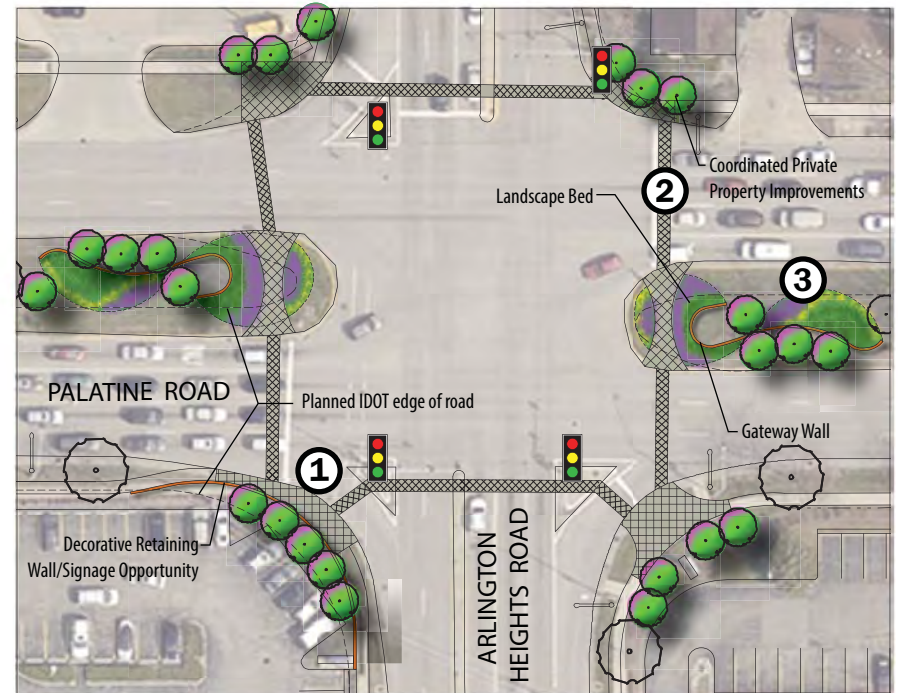
Median Gateway Landscape

- ③ Decorative gateway wall; public art; uplighting at existing and new ornamental trees; shrubs and perennials.

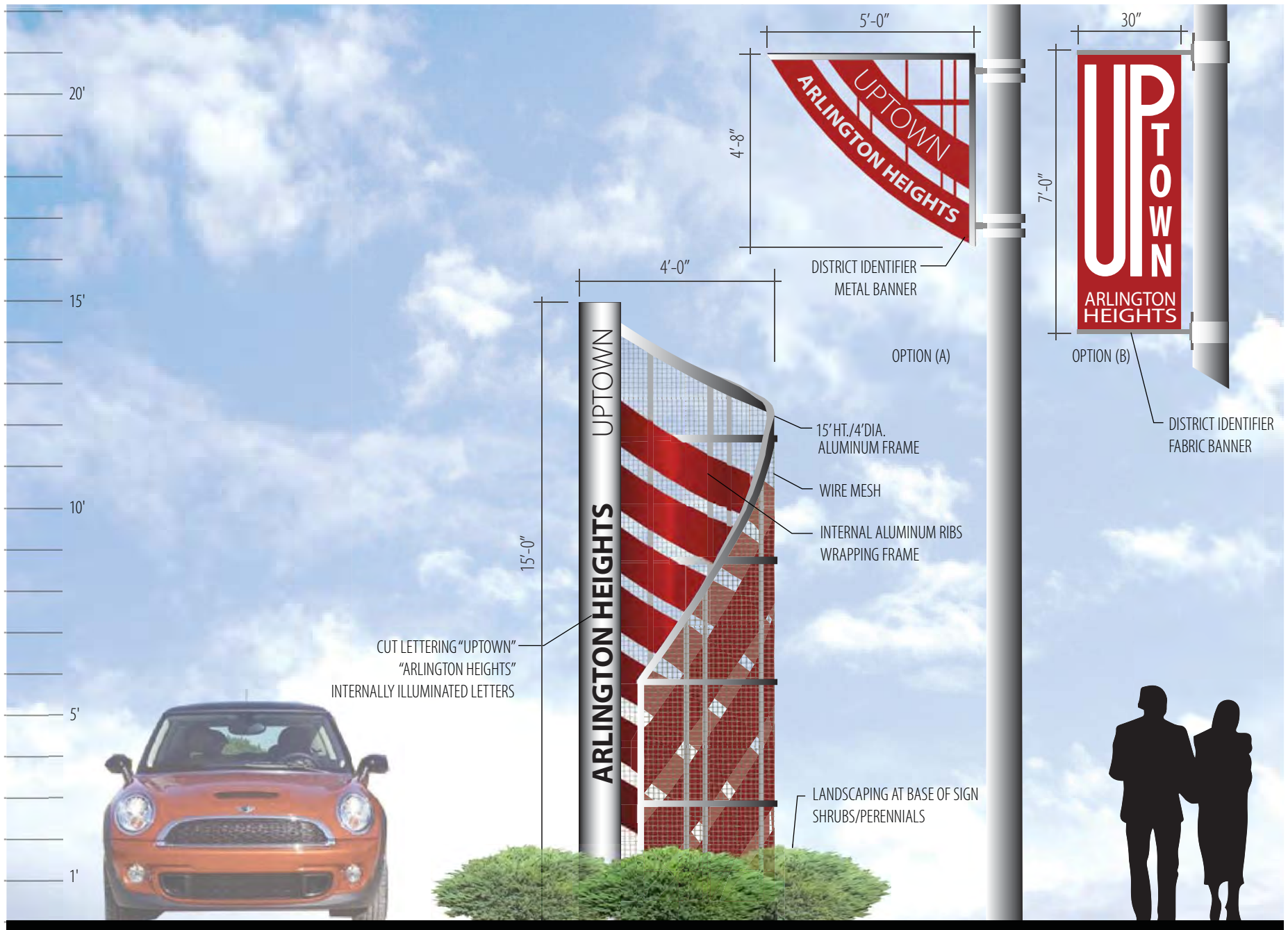
*Planned IDOT Improvements per 2001 Palatine Road Proposed Plan (shown in dashed line)



Palatine Road and Rand Road Intersection Improvements Includes New ADA Access and Crosswalks



Palatine Road and Arlington Heights Road Intersection Improvements Includes New ADA Access and Crosswalks



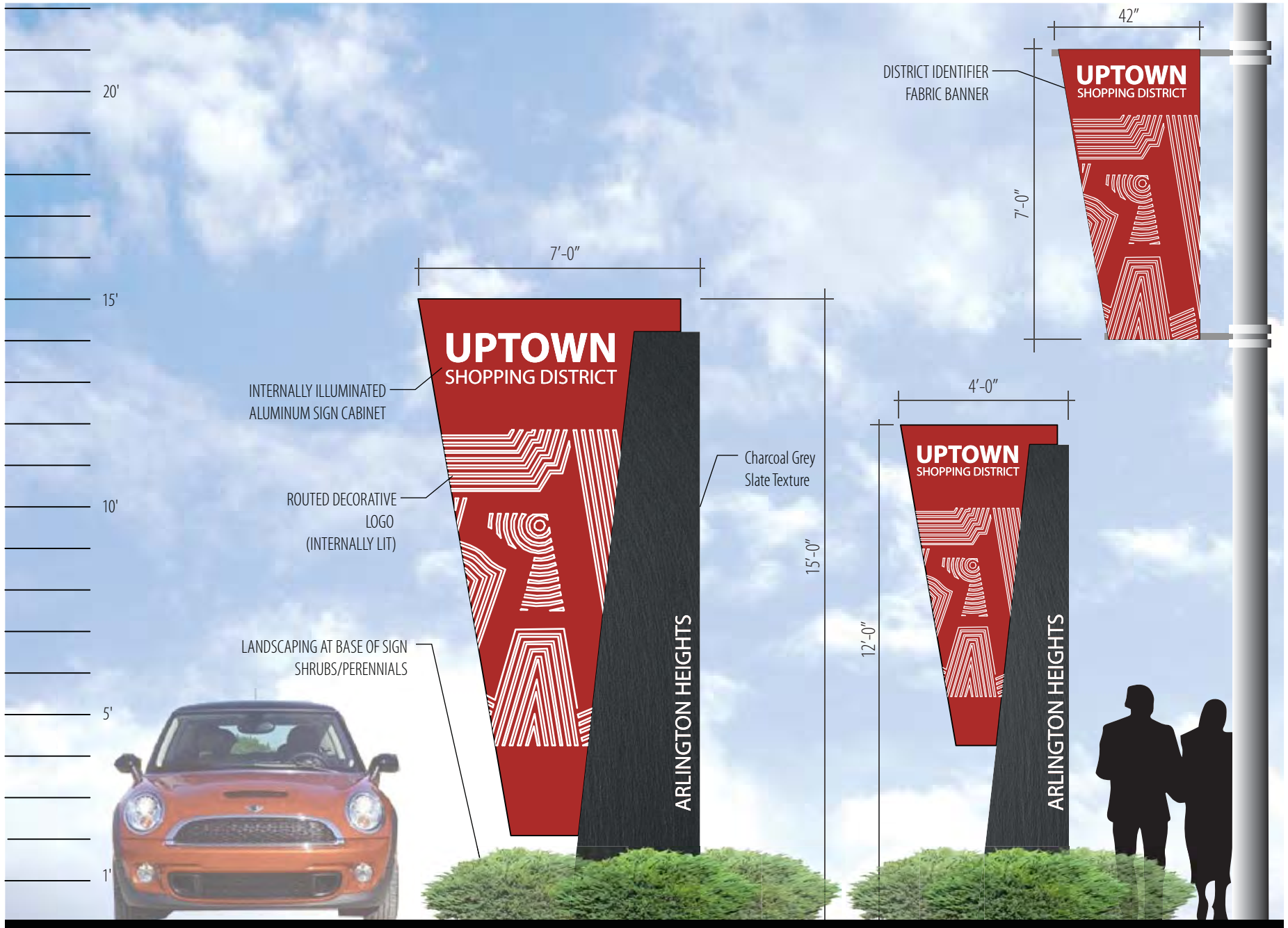
GATEWAY MONUMENT *\$95,000 per sign
 (INTERNALLY ILLUMINATED/GROUND UPLIGHTING)

ARLINGTON HEIGHTS
Corridor Beautification Plan : Rand Road, Palatine Road and Arlington Heights Road
(S1) DISTRICT GATEWAY SIGNAGE

*Costs are provided for preliminary budgeting purposes only. Further evaluation and refinement of signs concepts by sign manufacturer is necessary to fully understand the cost to construct the signs.

01-22-2016





INTERNALLY ILLUMINATED ALUMINUM SIGN CABINET

ROUTED DECORATIVE LOGO (INTERNALLY LIT)

LANDSCAPING AT BASE OF SIGN SHRUBS/PERENNIALS

Charcoal Grey Slate Texture

DISTRICT IDENTIFIER FABRIC BANNER

GATEWAY MONUMENT 'A' (PALATINE ROAD) *\$70,000 per sign (INTERNALLY ILLUMINATED)

GATEWAY MONUMENT 'B' (ARLINGTON / RAND RD) *\$40,000 per sign (INTERNALLY ILLUMINATED)

ARLINGTON HEIGHTS
Corridor Beautification Plan : Rand Road, Palatine Road and Arlington Heights Road
(S2) DISTRICT GATEWAY SIGNAGE

*Costs are provided for preliminary budgeting purposes only. Further evaluation and refinement of signs concepts by sign manufacturer is necessary to fully understand the cost to construct the signs.

01-22-2016





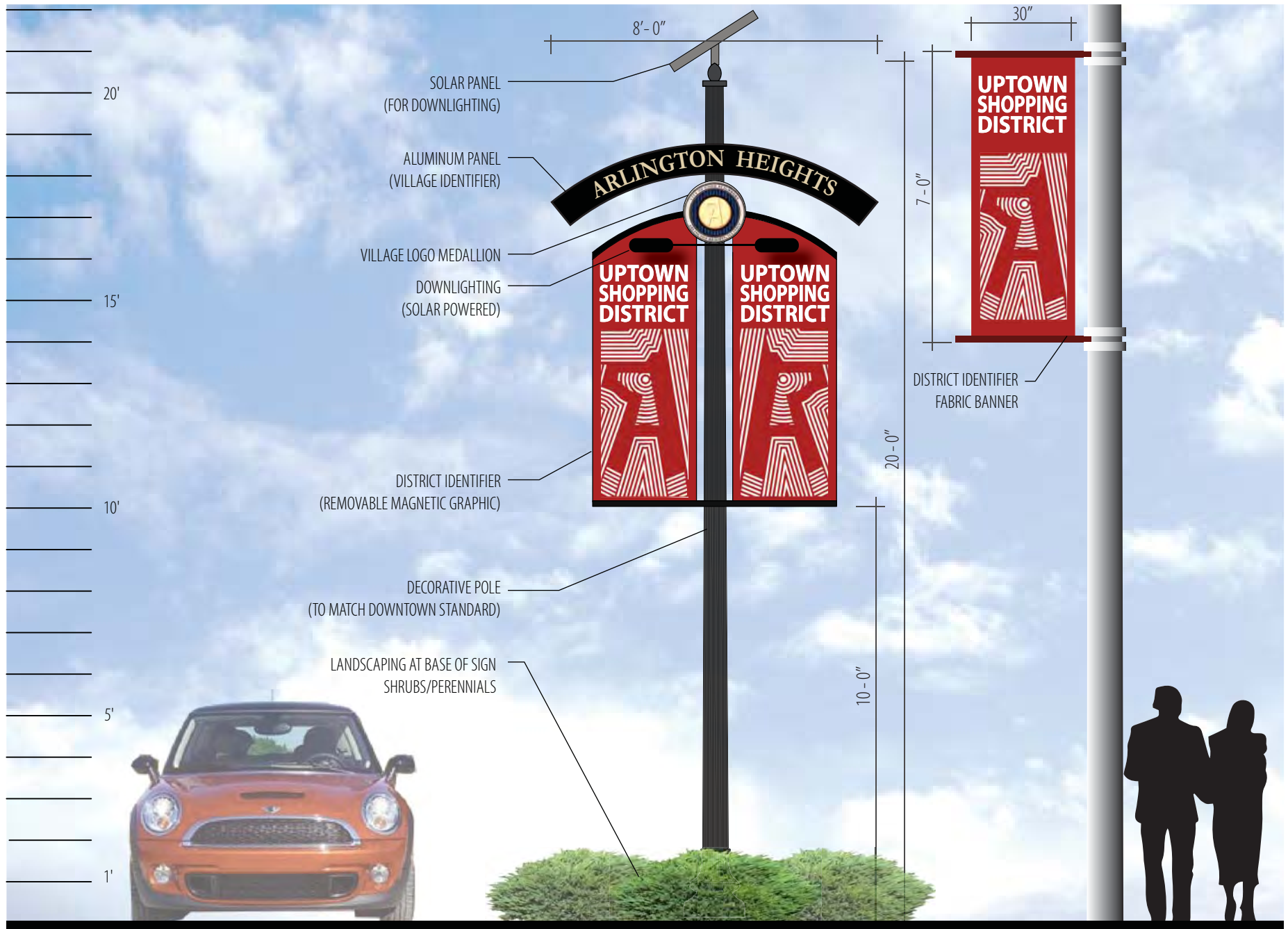
GATEWAY MONUMENT (INTERNALLY ILLUMINATED) *\$40,000 per sign

ARLINGTON HEIGHTS
Corridor Beautification Plan : Rand Road, Palatine Road and Arlington Heights Road
(S3) DISTRICT GATEWAY SIGNAGE

*Costs are provided for preliminary budgeting purposes only. Further evaluation and refinement of signs concepts by sign manufacturer is necessary to fully understand the cost to construct the signs.

01-22-2016





GATEWAY MONUMENT *\$25,000 per sign

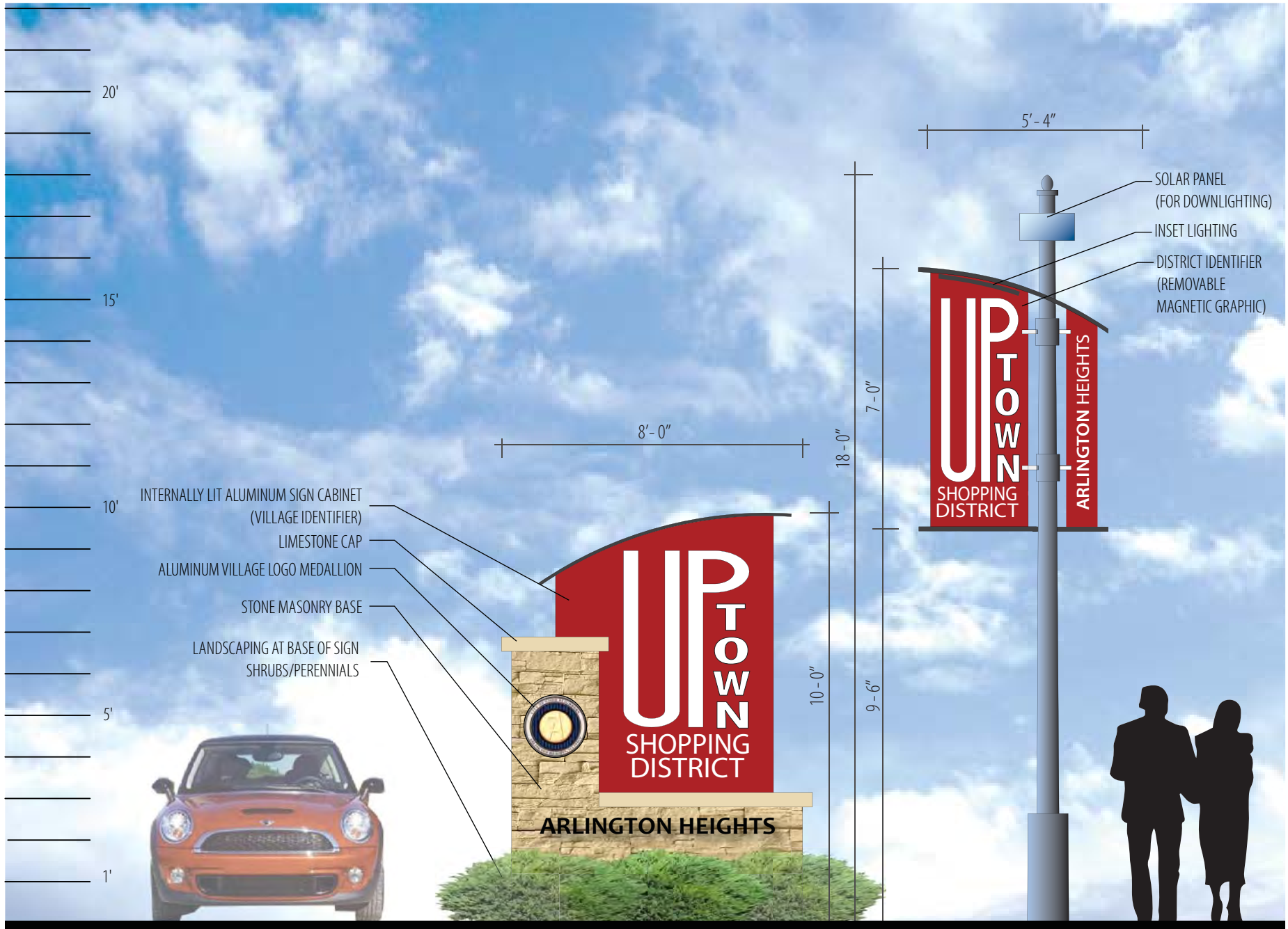
ARLINGTON HEIGHTS
Corridor Beautification Plan : Rand Road, Palatine Road and Arlington Heights Road
(S4) DISTRICT GATEWAY SIGNAGE

*Costs are provided for preliminary budgeting purposes only. Further evaluation and refinement of signs concepts by sign manufacturer is necessary to fully understand the cost to construct the signs.

01-22-2016



teska
 associates
 627 Grove Street
 Evanston, Illinois
 60201-4474



OPTIONAL GATEWAY MONUMENT 'A' IN PALATINE ROAD MEDIAN *\$35,000 per sign

POLE MOUNTED GATEWAY SIGN 'B' IN PARKWAY AREAS *\$25,000 per sign

ARLINGTON HEIGHTS
Corridor Beautification Plan : Rand Road, Palatine Road and Arlington Heights Road
(S5) DISTRICT GATEWAY SIGNAGE

*Costs are provided for preliminary budgeting purposes only. Further evaluation and refinement of signs concepts by sign manufacturer is necessary to fully understand the cost to construct the signs.

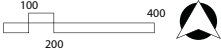
01-22-2016



teska
 associates
 627 Grove Street
 Evanston, Illinois
 60201-4474



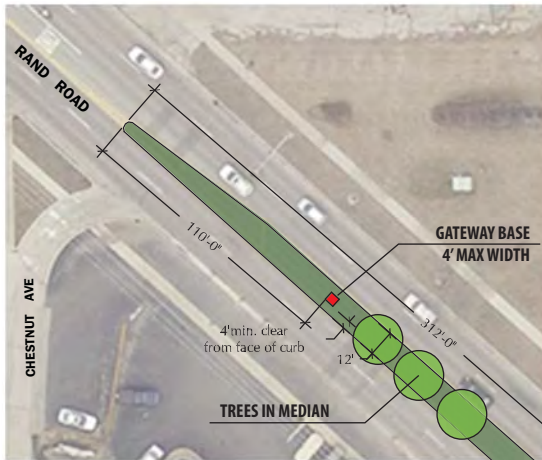
- LEGEND**
- TIF 3 & 5 District
See Sheet (L1) TIF5 Corridor
Landscape Improvements
 - Shops of Uptown
- GATEWAY/BANNER PLAN**
- Ex. Light Pole - No Banner (IDOT Permit Guidelines)
(Applied to Major Intersections)
 - Ex. Light Pole - Typ. Village Cloth Banner Location
 - 6 Gateway Opportunity
See Sheet (S1) District Gateway Signage
See Sheet (S7) Gateway Locations



ARLINGTON HEIGHTS
Corridor Beautification Plan : Randal Road, Palatine Road and Arlington Heights Road
(S6) CORRIDOR GATEWAY AND BANNER LOCATION

01-22-2016

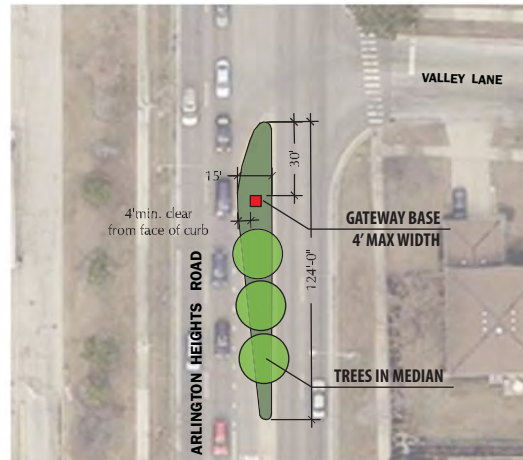




Gateway (G1) - Northwest Rand Road

Existing: Painted Median

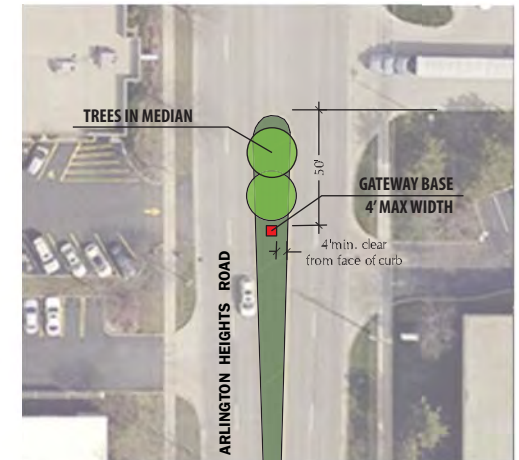
Proposed: New curbed landscape median with trees, shrubs, grasses, perennials, native plantings with a District gateway feature.



Gateway (G2) - North Arlington Heights Road

Existing: Mountable Raised Concrete Median

Proposed: New curbed landscape median with trees, shrubs, grasses, perennials, native plantings with a District gateway feature.



Gateway (G3) - South Arlington Heights Road

Existing: Painted Median

Proposed: New curbed landscape median with trees, shrubs, grasses, perennials, native plantings with a District gateway feature.

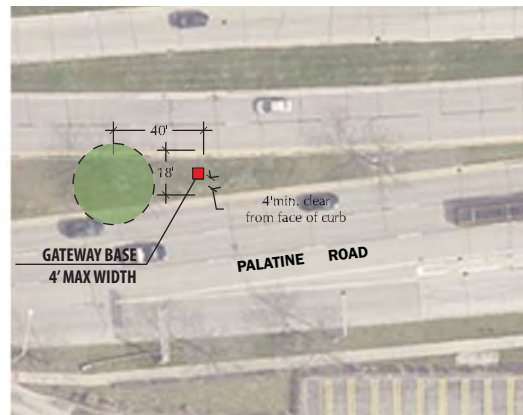
NOTE: PROPOSED MEDIAN MAY IMPACT TURNING MOVEMENTS



Gateway (G4) - West Palatine Road

Existing: Raised Landscape Median

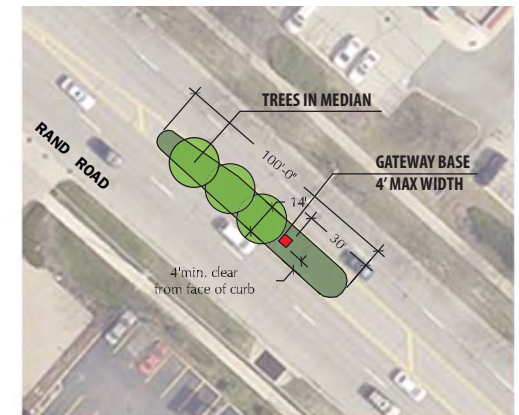
Median landscape improvements with massings of shrubs, grasses, perennials, native plantings with a District gateway feature.



Gateway (G5) - East Palatine Road

Existing: Raised Landscape Median

Median landscape improvements with massings of shrubs, grasses, perennials, native plantings with a District gateway feature.



Gateway (G6) - Southeast Rand Road

Existing: Painted Median

Proposed: New curbed landscape median with trees, shrubs, grasses, perennials, native plantings with a District gateway feature.





Gateway (G1) - Northwest Rand Road

Existing: Painted Median

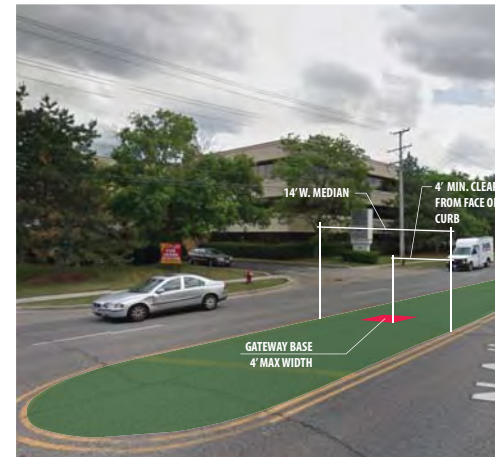
Proposed: New curbed landscape median with trees, shrubs, grasses, and perennials with a District gateway feature.



Gateway (G2) - North Arlington Heights Road

Existing: Mountable Raised Concrete Median

Proposed: New curbed landscape median with trees, shrubs, grasses, and perennials with a District gateway feature.



Gateway (G3) - South Arlington Heights Road

Existing: Painted Median

Proposed: New curbed landscape median with trees, shrubs, grasses, and perennials with a District gateway feature.

NOTE: PROPOSED MEDIAN MAY IMPACT TURNING MOVEMENTS



Gateway (G4) - West Palatine Road

Existing: Raised Landscape Median

Median landscape improvements with massings of shrubs, grasses, perennials, native plantings with a District gateway feature.



Gateway (G5) - East Palatine Road

Existing: Raised Landscape Median

Median landscape improvements with massings of shrubs, grasses, perennials, native plantings with a District gateway feature.



Gateway (G6) - Southeast Rand Road

Existing: Painted Median

Proposed: New curbed landscape median with trees, shrubs, grasses, and perennials with a District gateway feature.



- A** GATEWAY SIGN (S1) AT MEDIAN
INTERNALLY ILLUMINATED
- B** MEDIAN LANDSCAPE PLANTINGS
SHRUBS/PERENNIALS
- C** MIN 2' CLEAR FROM CURB (PLANTING BED)
MIN 4' CLEAR FROM CURB (GATEWAY SIGN)



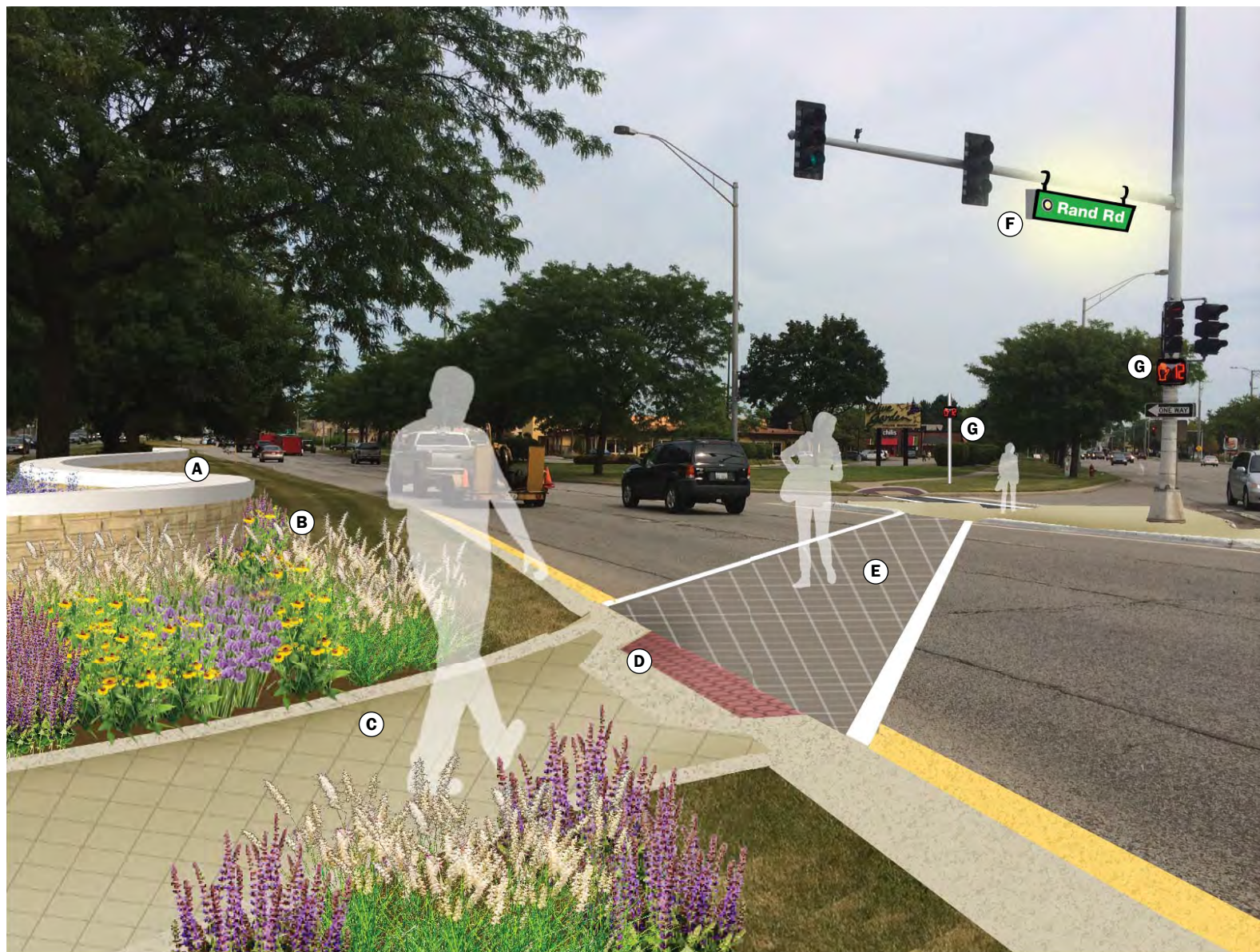
- A** GATEWAY SIGN (S4) AT MEDIAN
- B** MEDIAN LANDSCAPE PLANTINGS
SHRUBS/PERENNIALS
- C** MIN 2' CLEAR FROM CURB (PLANTING BED)
MIN 4' CLEAR FROM CURB (GATEWAY SIGN)



- (A) GATEWAY SIGN 'A' (SS) AT MEDIAN
- (B) MEDIAN LANDSCAPE PLANTINGS SHRUBS/PERENNIALS
- (C) MIN 2' CLEAR FROM CURB (PLANTING BED)
MIN 4' CLEAR FROM CURB (GATEWAY SIGN)
- (D) GATEWAY SIGN 'B' (SS) AT PARKWAYS



VIEW LOOKING NORTH TO PALATINE ROAD ALONG ARLINGTON HEIGHTS ROAD



- (A)** +/- 4' HT. MASONRY GATEWAY LANDSCAPE WALL
- (B)** MEDIAN LANDSCAPE PLANTINGS
- (C)** DECORATIVE PAVING AT MEDIAN REFUGE ISLANDS
- CONCRETE PAVING WITH DIAGONAL JOINT PATTERN
- (D)** ADA ACCESS INCLUDING TRUNCATED DOMES
- (E)** DECORATIVE TEXTURED PAVING AT CROSSWALK
- DIAGONAL JOINT PATTERN
- (F)** INTERNALLY ILLUMINATED LED STREET SIGN W/
VILLAGE LOGO
- (G)** PEDESTRIAN COUNTDOWN TIMER

ARLINGTON HEIGHTS
 Corridor Beautification Plan : Rand Road, Palatine Road and Arlington Heights Road
(V4) INTERSECTION IMPROVEMENTS VISUALIZATION: Palatine / Rand Road

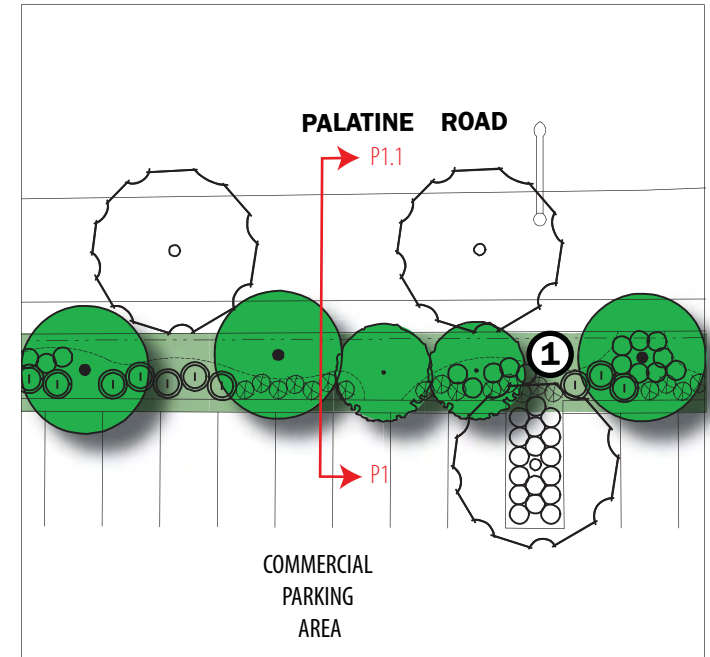
01-22-2016



627 Grove Street
 Evanston, Illinois
 62061-4474



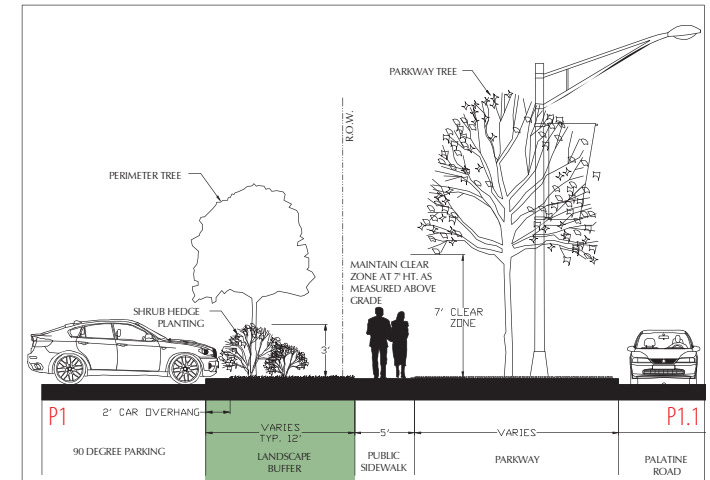
Perimeter landscape buffer includes ground cover, shrubs, and trees.



Perimeter Landscape Buffer: (Typical 12' width)

① The surface parking lot perimeter landscape buffer twelve feet (12) in width to be well-landscaped with ground cover, shrubs and trees that are salt-tolerant and of seasonal interest. The buffer should be undulating and have a variety of materials to provide interest and separation. At a minimum, landscape treatment should be:

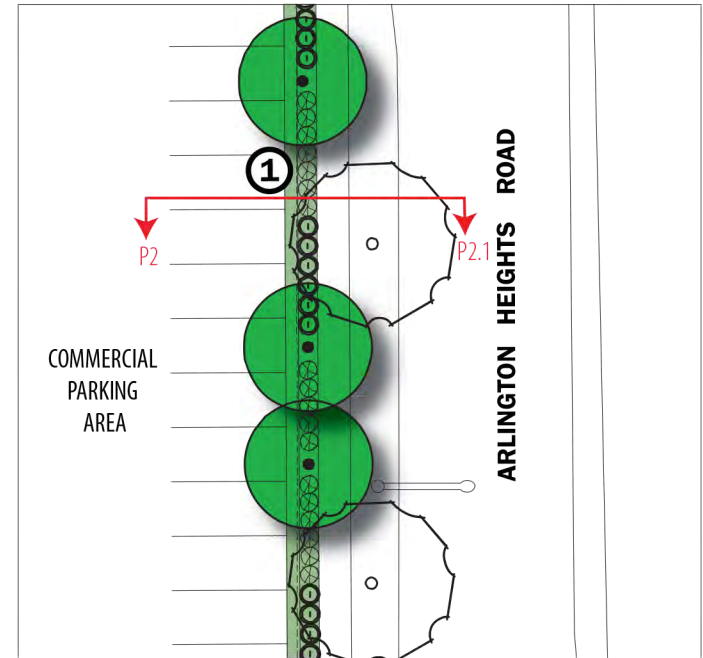
- a) 3' ht shrub plantings and canopy tree plantings.
- b) Be located solely on private property and allow for clear sight triangle for drivers.
- c) Where space allows, berming is encouraged as part of the perimeter landscape treatment to allow for diversity of interest.



Cross-Section P1: perimeter landscape buffer



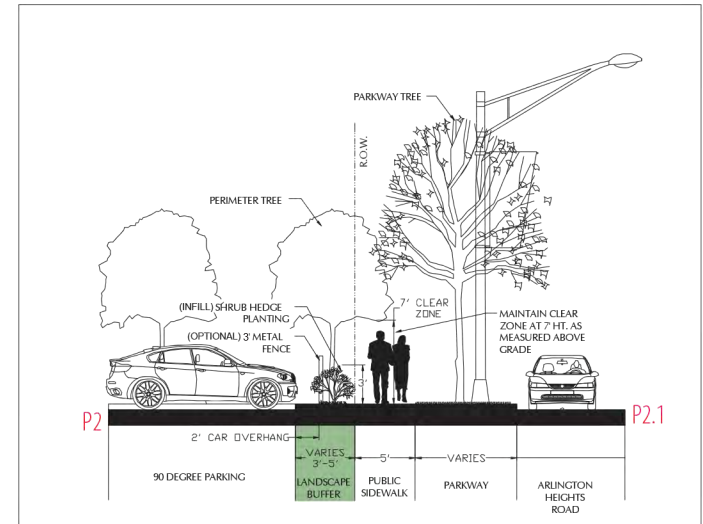
Perimeter landscape buffer includes ground cover, shrubs, trees and decorative metal fencing and/or masonry wall.



Perimeter Landscape Buffer: (3'- 5' width)

① The surface parking lot perimeter landscape buffer from three to five feet 3'-5' in width to be well-landscaped with ground cover, shrubs and trees that are salt-tolerant and of seasonal interest. Decorative metal fencing and/or masonry wall is encouraged and have a variety of materials to provide interest and separation. At a minimum, landscape treatment should be:

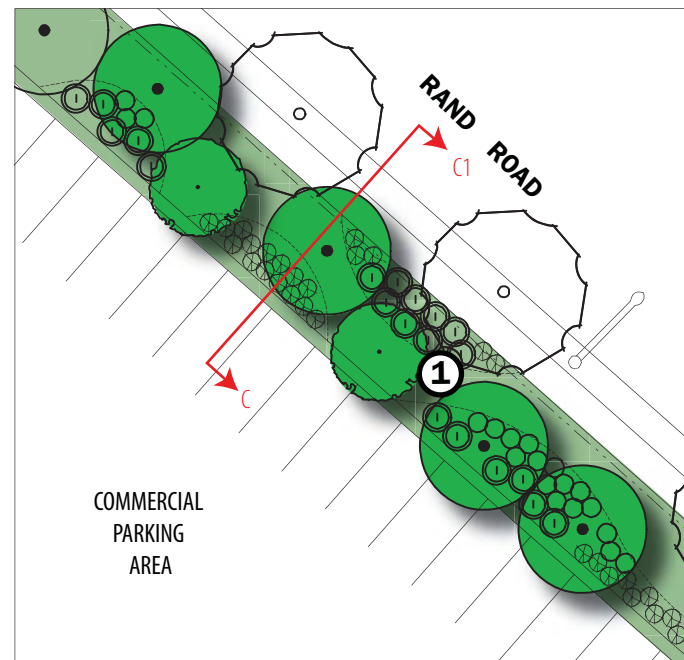
- a) 3' ht shrub plantings and canopy tree plantings.
- b) Be located solely on private property and allow for clear sight triangle for drivers.
- c) Decorative metal fencing and/or masonry wall is encouraged along the perimeter of the surface lot.



Cross-Section P2: perimeter landscape buffer



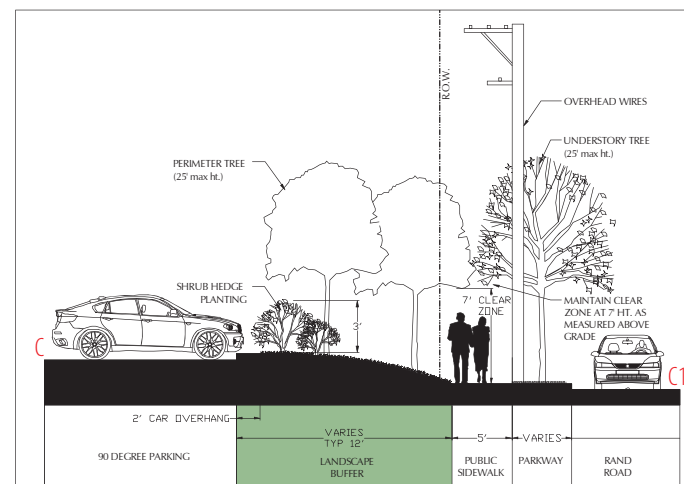
Perimeter landscape buffer includes ground cover, shrubs, and trees..



Perimeter Landscape Buffer: (Typical 12' width)

① The surface parking lot perimeter landscape buffer twelve feet (12) in width to be well-landscaped with ground cover, shrubs and trees that are salt-tolerant and of seasonal interest. The buffer should be undulating and have a variety of materials to provide interest and separation. At a minimum, landscape treatment should be:

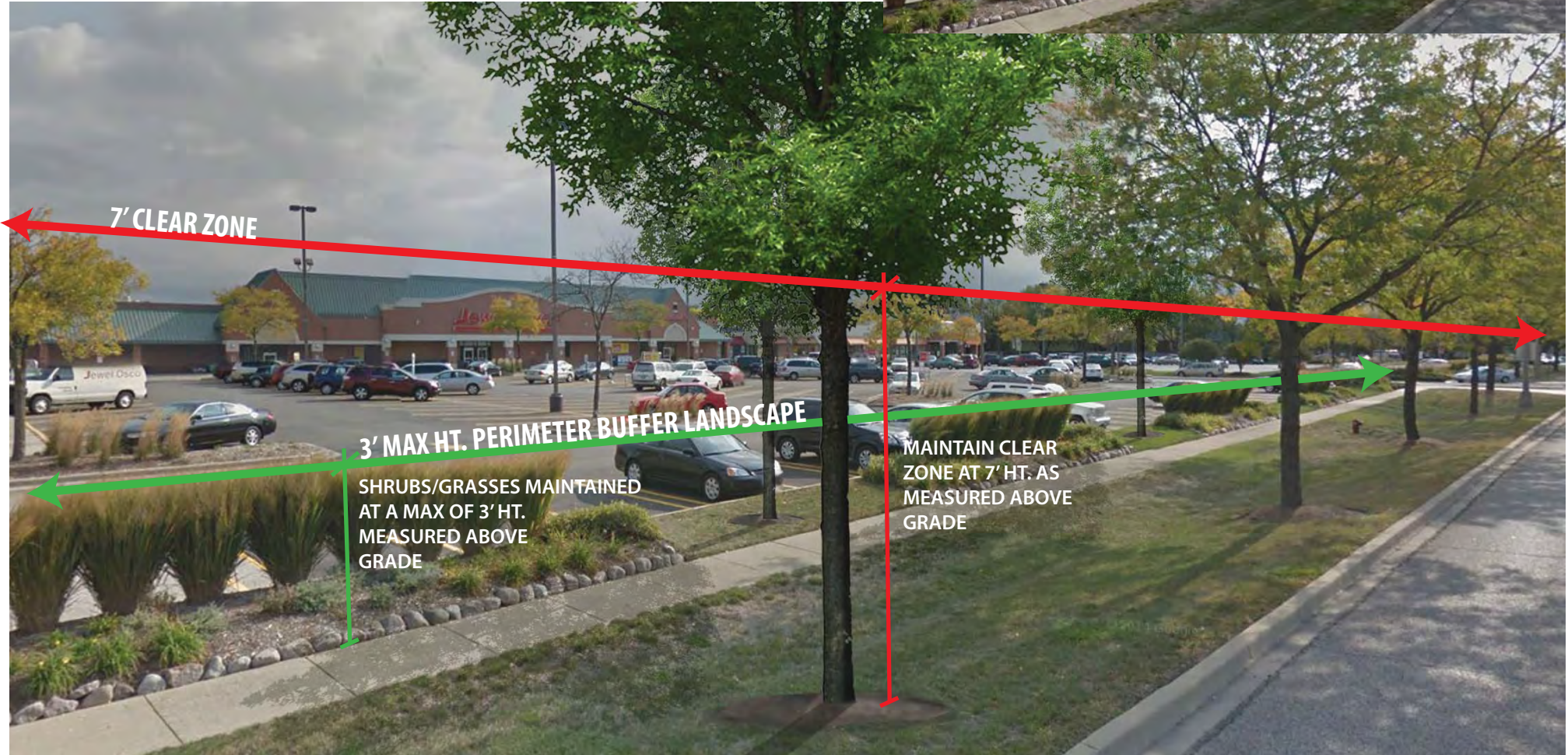
- a) 3' ht shrub plantings and canopy tree plantings.
- b) Be located solely on private property and allow for clear sight triangle for drivers.
- c) Where space allows, berming is encouraged as part of the perimeter landscape treatment to allow for diversity of interest.
- d) Where overhead wires are located within the parkway, understory trees should not exceed 25' ht. at maturity.



Cross-Section P3: perimeter landscape buffer

Parkway/ Perimeter Plantings Clear Zone:

To maintain a clear view to building wall signage, parkway/perimeter plantings should be maintained such that the areas measured between 3'-7' ht. are open to the motorist's view.





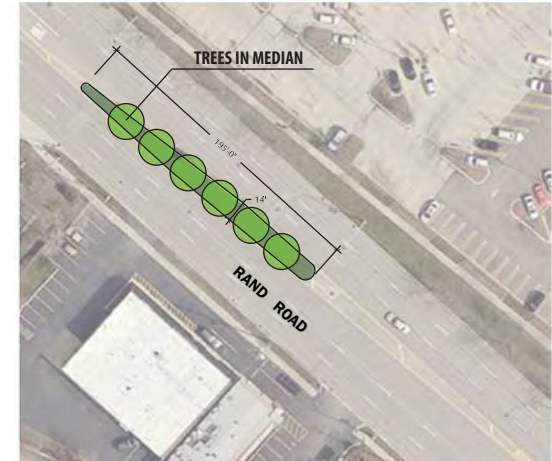
Median (M1) - Northwest Rand Road

New curbed landscape median with trees, shrubs, grasses, perennials, native plantings with a District gateway feature.



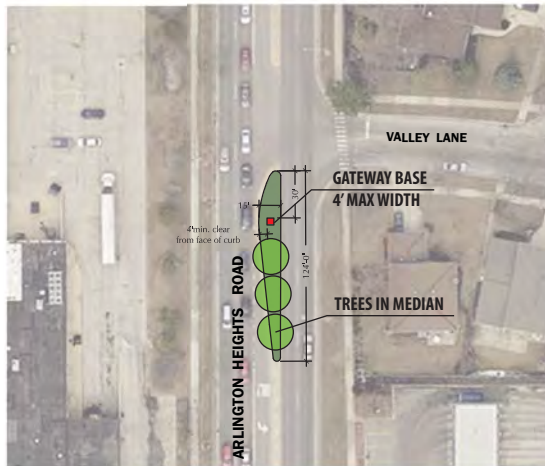
Median (M2) - Northwest Rand Road

New curbed landscape median with trees, shrubs, grasses, perennials, and native plantings.



Median (M3) - Northwest Rand Road

New curbed landscape median with trees, shrubs, grasses, perennials, and native plantings.



**Median (M4) - North
Arlington Heights Road**

New curbed landscape median with trees, shrubs, grasses, perennials, native plantings with a District gateway feature.



**Median (M5) - South
Arlington Heights Road**

New curbed landscape median with trees, shrubs, grasses, perennials, native plantings with a District gateway feature.

NOTE: PROPOSED MEDIAN MAY IMPACT TURNING MOVEMENTS



Median (M6) - Southeast Rand Road

New curbed landscape median with trees, shrubs, grasses, perennials, native plantings with a District gateway feature.

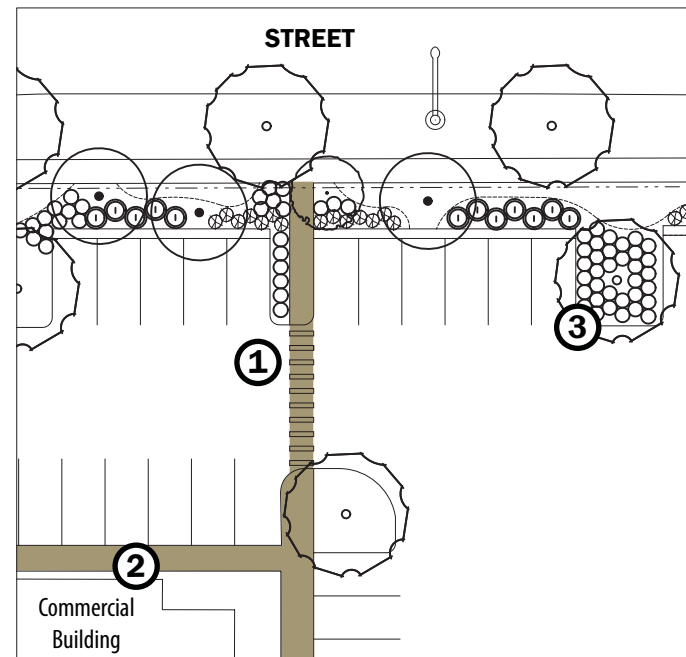




Continuous pedestrian walkways through parking lots



Garden walls at pedestrian access into parking lot



Pedestrian Crossings

- ① Commercial properties should have pedestrian access from the public right-of-way to the building entrance by way of continuous walkways through parking lots and crosswalks .

Pedestrian Walks

- ② Pedestrian oriented streetscape elements include decorative paving, crosswalks, planters, street trees, and benches.

Landscape Islands

- ③ Landscape islands should contain a variety of planting materials including, shade trees, plants with seasonal interest, low shrubs, salt-tolerant groundcover and garden walls.



Pedestrian oriented streetscape along shopping center drives



Pedestrian access into parking lot



Paving - Crosswalks and Accent Corners

Decorative textured paving/high strength concrete inlay, Traffic Print or similar



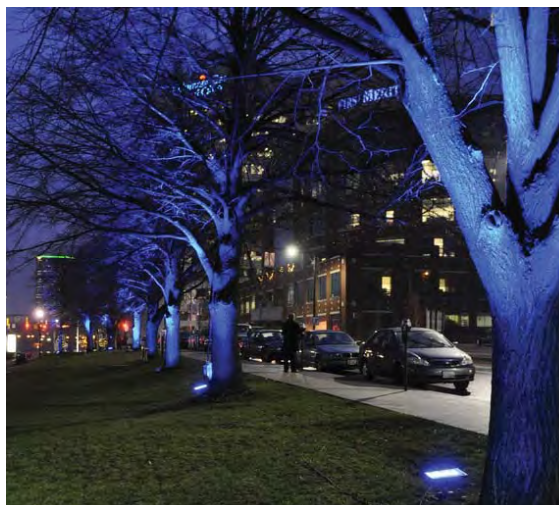
Street Signs

Internally Illuminated LED Street Signs w/ Village Logo



Median Lighting

Uplighting median trees with color options



LED Color Changing Tree Uplighting Fixture

Recommended Canopy Trees

- | | |
|--|------------------------------|
| <i>Celtis occidentalis</i> - | Common Hackberry |
| <i>Ginkgo biloba</i> (male only) - | Ginkgo |
| <i>Gleditsia triacanthos inermis</i> 'Skyline' - | Skyline Honeylocust |
| <i>Gymnocladus dioica</i> - | Kentucky Coffeetree |
| <i>Quercus alba</i> - | White Oak |
| <i>Quercus robur</i> - | English Oak |
| <i>Tilia americana</i> 'Redmond' - | Redmond Linden |
| <i>Tilia cordata</i> 'Greenspire' - | Greenspire Littleleaf Linden |
| <i>Ulmus carpinifolia</i> 'Accolade' - | Accolade Smoothleaf Elm |



Ginkgo



Skyline Honeylocust



Greenspire Littleleaf Linden

Recommended Canopy Trees for use Where Overhead Wires Exist

- | | |
|--|----------------------------------|
| <i>Amelanchier canadensis</i> - | Serviceberry |
| <i>Amelanchier x grandiflora</i> - | Apple Serviceberry |
| 'Autumn Brilliance' | |
| <i>Crataegus crus-galli</i> - | Cockspur Hawthorn |
| <i>Syringa reticulata</i> 'Ivory Silk' - | Japanese Tree Lilac 'Ivory Silk' |



Cockspur Hawthorn



Apple Serviceberry



Japanese Tree Lilac 'Ivory Silk'

Recommended Shrubs

<i>Aronia arbutifolia</i> 'Brilliantissima' -	Red Chokeberry
<i>Aronia melanocarpa</i> -	Glossy Black Chokeberry
<i>Cotoneaster acutifolius</i> -	Peking Cotoneaster
<i>Rhus aromatica</i> 'Gro-Low' -	Gro-Low Sumac
<i>Spirea betulifolia</i> 'Tor' -	Birchleaf Spirea
<i>Spirea prunifolia</i> -	Bridalwreath Spirea
<i>Syringa patula</i> 'Ms. Kim' -	Miss Kim Korean Lilac
<i>Viburnum dentatum</i> 'Christom' -	Blue Muffin Viburnum



Gro-Low Sumac



Blue Muffin Viburnum

Recommended Perennials and Ornamental Grasses

<i>Allium angulosum</i> 'Summer Beauty' -	Allium Summer Beauty
<i>Helictotrichon sempervirens</i> -	Blue Oat Grass
<i>Hemerocallis</i> 'Stella de Oro' -	Daylily
<i>Nepeta x faassenii</i> 'Walkers Low' -	Walkers Low Catmint
<i>Pennisetum alopecuroides</i> 'Hameln' -	Dwarf Fountain Grass
<i>Salvia nemorosa</i> 'Ostfriesland' -	East Friesland Salvia



Feather Reed Grass



Black Eye Susan

Recommended Native Perennials and Ornamental Grasses

<i>Briza media</i> -	Quaking Grass
<i>Calamagrostis acutiflora</i> 'Karl Foerster' -	Feather Reed Grass
<i>Echinacea purpurea</i> -	Purple Coneflower
<i>Geum triflorum</i> -	Prairie Smoke
<i>Rudbeckia hirta</i> -	Black Eyed Susan
<i>Schizachyrium scoparium</i> -	Little Bluestem
<i>Sporobolus heterolepis</i> -	Prairie Dropseed



Purple Coneflower



Prairie Dropseed

CORRIDOR BEAUTIFICATION PLAN - VILLAGE OF ARLINGTON HEIGHTS, IL

Preliminary Cost Estimate (R.O.W. Improvements Only)

Prepared by Teska Associates

1/22/2016

Project 1) BANNERS						
Item	QTY	Unit	Unit Cost	Item Total	Subtotal	Remarks
Corridor Improvements						
RAND ROAD						
Decorative Banners (Fabric)	28	EA	\$200.00	\$5,600.00		installed on existing roadway lights
					\$5,600.00	
ARLINGTON HEIGHTS ROAD						
Decorative Banners (Fabric)	18	EA	\$200.00	\$3,600.00		installed on existing roadway lights
					\$3,600.00	
PALATINE ROAD						
Decorative Banners (Fabric)	35	EA	\$200.00	\$7,000.00		installed on existing roadway lights
					\$7,000.00	

	SubTotal	
OTHER PROJECT COSTS		
General Conditions	10%	\$1,620.00
Construction Phase Services	5%	810.00
Design/Engineering Fees	10%	\$1,620.00
Construction Contingency	5%	\$810.00
TOTAL		\$21,060.00

Project 2) GATEWAY SIGNS							
Item	QTY	Unit	Unit	Unit	Unit	Unit	Remarks
		S1	S2	S3	S4	S5	
Corridor Improvements							
RAND ROAD							
Gateway Sign	2	\$95,000	\$40,000	\$40,000	\$25,000	\$25,000	Sign concepts shown are conceptual and vary, further design development will be required. Final sign concepts and selection TBD
Total		\$190,000	\$80,000	\$80,000	\$50,000	\$100,000	
ARLINGTON HEIGHTS ROAD							
Gateway Sign	2	\$95,000	\$40,000	\$40,000	\$25,000	\$25,000	S5 Sign Concept 'B' for Rand/Arlington Road have a qty of 4 signs. These are pole-mounted and placed in the parkways.
Total		\$190,000	\$80,000	\$80,000	\$50,000	\$100,000	
PALATINE ROAD							
Gateway Sign	2	\$95,000	\$70,000	\$40,000	\$25,000	\$35,000	
Total		\$190,000	\$140,000	\$80,000	\$50,000	\$70,000	
Total	6	\$570,000	\$300,000	\$240,000	\$150,000	\$270,000	

Project 3) LANDSCAPING						
Item	QTY	Unit	Unit Cost	Item Total	Subtotal	Remarks
Corridor Improvements						
RAND ROAD						
Parkway Trees	42	EA	\$1,200.00	\$50,400.00		includes 3" caliper tree, soil and mulch
					\$50,400.00	
ARLINGTON HEIGHTS ROAD						
Parkway Trees	2	EA	\$1,200.00	\$2,400.00		includes 3" caliper tree, soil and mulch
					\$2,400.00	
PALATINE ROAD						
Parkway Trees	16	EA	\$1,200.00	\$19,200.00		includes 3" caliper tree, soil and mulch
Landscape Gateway Wall	420	LF	\$400.00	\$168,000.00		includes (4) masonry walls where Arlington Heights/Rand Road intersect
PHASE 1: Median Plantings	10,000	SF	\$6.00	\$60,000.00		includes topsoil, ornamental trees, shrubs and perennials at intersections/ends of median.
PHASE: 1 Irrigation	11	ZONE	\$1,000.00	\$11,000.00		includes main, remote control valves, sprinkler heads, and lateral connections
PHASE 2: Median Plantings	35,000	SF	\$6.00	\$210,000.00		includes topsoil, ornamental trees, shrubs and perennials at the middle of medians
PHASE 2: Irrigation	38	ZONE	\$1,000.00	\$38,000.00		includes main, remote control valves, sprinkler heads, and lateral connections
Water main connection for irrigation	4	EA	\$8,500.00	\$34,000.00		includes backflow device and irrigation controller with electrical service
Tree uplighting	41	EA	\$6,000.00	\$246,000.00		includes color changing LED lighting for each tree in the median
Concrete Pads for Public Art Installations	5	EA	\$1,000.00	\$5,000.00		
					\$791,200.00	

	Total	\$844,000.00
OTHER PROJECT COSTS		
General Conditions	10%	\$84,400.00
Construction Phase Services	5%	42,200.00
Design/Engineering Fees	10%	\$84,400.00
Construction Contingency	5%	\$42,200.00
TOTAL		\$1,097,200.00

Project 4) ILLUMINATED LED STREET SIGNS						
Item	QTY	Unit	Unit Cost	Item Total	Subtotal	Remarks
Corridor Improvements						
RAND ROAD						
Illuminated LED Street sign (8' length)	4	EA	\$4,000.00	\$16,000.00		
					\$16,000.00	
ARLINGTON HEIGHTS ROAD						
Illuminated LED Street sign (8' length)	4	EA	\$4,000.00	\$16,000.00		
					\$16,000.00	
PALATINE ROAD						
Illuminated LED Street sign (8' length)	4	EA	\$4,000.00	\$16,000.00		
					\$16,000.00	
				Total	\$48,000.00	

OTHER PROJECT COSTS		
General Conditions	10%	\$4,800.00
Construction Phase Services	5%	2,400.00
Design/Engineering Fees	10%	\$4,800.00
Construction Contingency	5%	\$2,400.00
TOTAL		\$62,400.00

Project 5) LANDSCAPE MEDIAN						
Item	QTY	Unit	Unit Cost	Item Total	Subtotal	Remarks
Corridor Improvements						
RAND ROAD						
Landscape Median	922	LF	\$150.00	\$138,300.00		replace striped/mountable curb median and includes curb, soil, groundcover, and trees
					\$138,300.00	
ARLINGTON HEIGHTS ROAD						
Landscape Median	306	LF	\$150.00	\$45,900.00		replace mountable curb median and includes curb, soil, groundcover, and trees
					\$45,900.00	
				Total	\$184,200.00	

OTHER PROJECT COSTS		
General Conditions	10%	\$18,420.00
Construction Phase Services	5%	9,210.00
Design/Engineering Fees	10%	\$18,420.00
Construction Contingency	5%	\$9,210.00
TOTAL		\$239,460.00

Project 6) CROSSWALKS						
Item	QTY	Unit	Unit Cost	Item Total	Subtotal	Remarks
Corridor Improvements						
RAND ROAD						
Decorative Crosswalks	4,560	SF	\$10.00	\$45,600.00		includes decorative inlay
ADA Access	12	EA	\$2,000.00	\$24,000.00		includes metal truncated domes (2' x4') and associated curb work
Pedestrian Countdown Timers	8	EA	\$10,000.00	\$80,000.00		
					\$149,600.00	
ARLINGTON HEIGHTS ROAD						
Decorative Crosswalks	3,950	SF	\$10.00	\$39,500.00		includes decorative inlay
ADA Access	18	EA	\$2,000.00	\$36,000.00		includes metal truncated domes (2' x4') and associated curb work
Pedestrian Countdown Timers	8	EA	\$10,000.00	\$80,000.00		
					\$155,500.00	
PALATINE ROAD						
Decorative Crosswalks	4,200	SF	\$10.00	\$42,000.00		includes decorative inlay
ADA Access	18	EA	\$2,000.00	\$36,000.00		includes metal truncated domes (2' x4') and associated curb work
Pedestrian Countdown Timers	8	EA	\$10,000.00	\$80,000.00		
					\$158,000.00	
				Total	\$463,100.00	

OTHER PROJECT COSTS		
General Conditions	10%	\$46,310.00
Construction Phase Services	5%	23,155.00
Design/Engineering Fees	10%	\$46,310.00
Construction Contingency	5%	\$23,155.00
TOTAL		\$602,030.00

Project 7) DECORATIVE PAVING						
Item	QTY	Unit	Unit Cost	Item Total	Subtotal	Remarks
Corridor Improvements						
RAND ROAD/ARLINGTON HEIGHTS						
Decorative Paving	2.100	SF	\$15.00	\$31,500.00		located on corners and refuge islands
					\$31,500.00	
RAND ROAD/PALATINE ROAD						
Decorative Paving	2.600	SF	\$15.00	\$39,000.00		located on corners and refuge islands
					\$39,000.00	
ARLINGTON HEIGHTS/PALATINE ROAD						
Decorative Paving	3.500	SF	\$15.00	\$52,500.00		located on corners and refuge islands
					\$52,500.00	
				Total	\$123,000.00	
OTHER PROJECT COSTS						
General Conditions				10%	\$12,300.00	
Construction Phase Services				5%	6,150.00	
Design/Engineering Fees				10%	\$12,300.00	
Construction Contingency				5%	\$6,150.00	
				TOTAL	\$159,900.00	

***PROJECT TOTAL \$2,182,050**
 *Project total does not include Gateway Signs (Gateway Concepts costs vary, see project 2 for costs)

- NOTE:
1. Costs are provided for preliminary budgeting purposes only. Further evaluation of the existing conditions and refinement of the proposed improvements is necessary to fully understand the costs to construct the proposed improvements.
 2. Unforeseen conditions such as utility relocations and adjustments are not accounted for in the budget costs provided. Further study is necessary to determine if conditions exist that will require modification to construct the proposed improvements.
 3. Costs are shown separately for each geographic area. Combining multiple areas together in one bid package will likely result in lower unit costs based on economies of scale.
 4. Costs are based on a General Contractor project delivery method assuming a public bidding process and payment of prevailing wages. Unit costs shown are from past experience on similar projects. Actual costs will vary based on economic conditions and other factors at the time of bidding.
 5. Costs do not include roadway improvements, paving and regrading associated with landscape median work.
 6. All lighting work assumes direct access to electrical service.