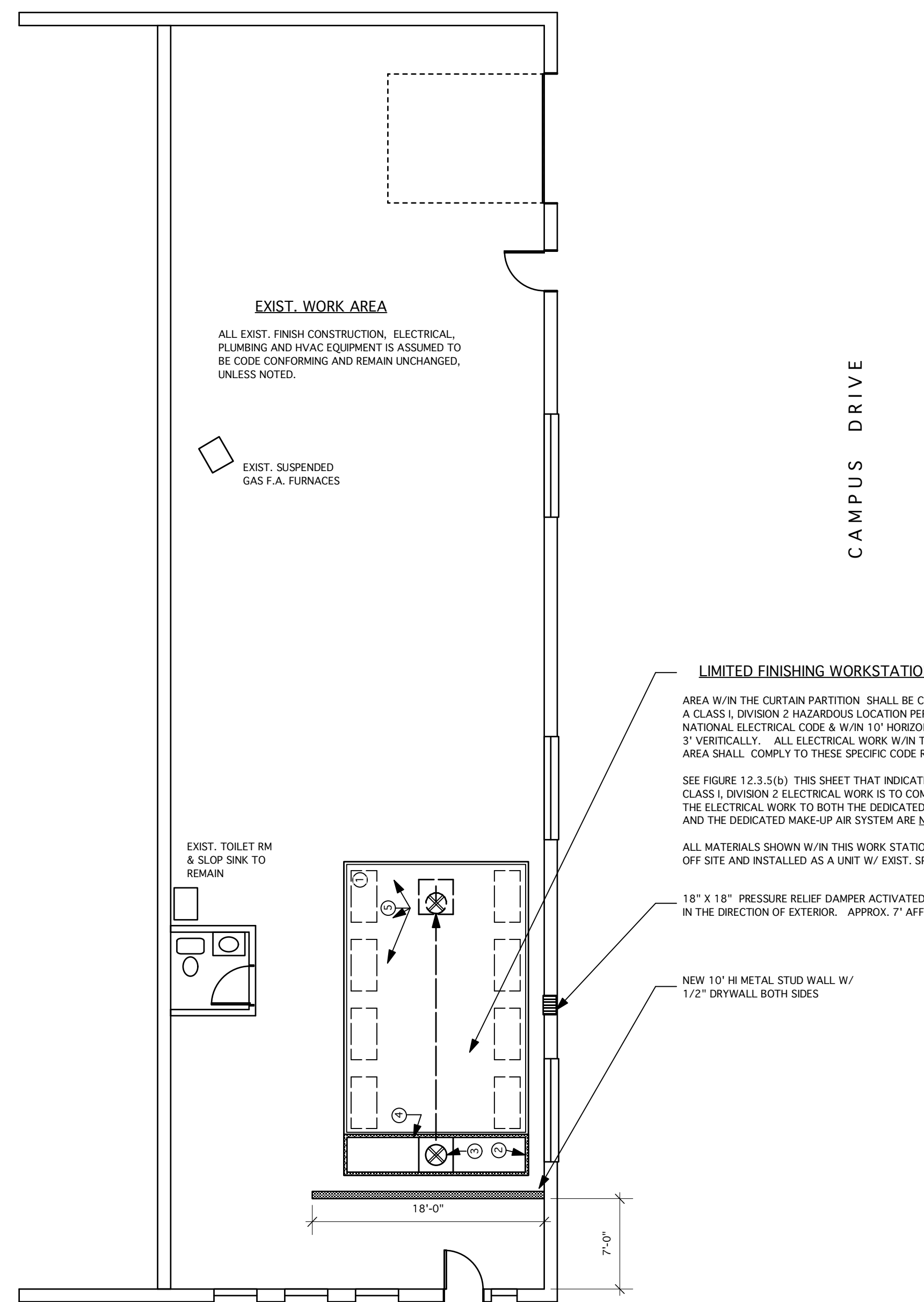


ITEM	QTY.	PART #	DESCRIPTION
1	8	1100-09	LIGHT FIXTURES; FOUR TUBE 48"; 32 WATT FIXTURES MOUNTED BEHIND CLEAR TEMPERED GLASS PANNES, ETL LISTED FOR THEIR INTENDED USE & PLACEMENT, (CLASS I, DIVISION 2)
2	ONE LOT		18 GA. GALV. STEEL SHELL, POWDER COAT WHITE
3	ONE	18810525	18"Ø TUBEXIAL FAN; RATED FOR 5,000 SCFM EXHAUST @ 1/2" SP; DRIVEN BY A 1 1/2 HP ODP TYPE MOTOR WITH MOTOR COVER 208/3PH/60HZ
4	16		EXHAUST FILTERS; 20"X20"X2" PAD W/ GRIDS
5	3		SWING DOWN FILTERS W/ BLANKET MEDIA
6	ONE		MANOMETER
7	ONE LOT		EXHAUST DUCT PACKAGE (1) 18"Ø PLAIN PIPE DUCT (36" SECTIONS) (1) 18"Ø PLAIN PIPE DUCT WITH CLEANOUT DOOR (1) 18"Ø CONNECTION RING (1) 18"Ø AUTO DAMPER STACK HEAD (ARV) (1) 18"Ø FLAT ROOF FLANGE W/ STORM COLLAR UNLESS OTHERWISE NOTED DUCTWORK SUPPORT BY OTHERS
8	ONE	18810525	18"Ø TUBEXIAL FAN; RATED FOR 5,000 SCFM EXHAUST @ 1/2" SP; DRIVEN BY A 1 1/2
9	ONE		SPECIAL FAN SPACER
10	ONE		DIFFUSER PANEL



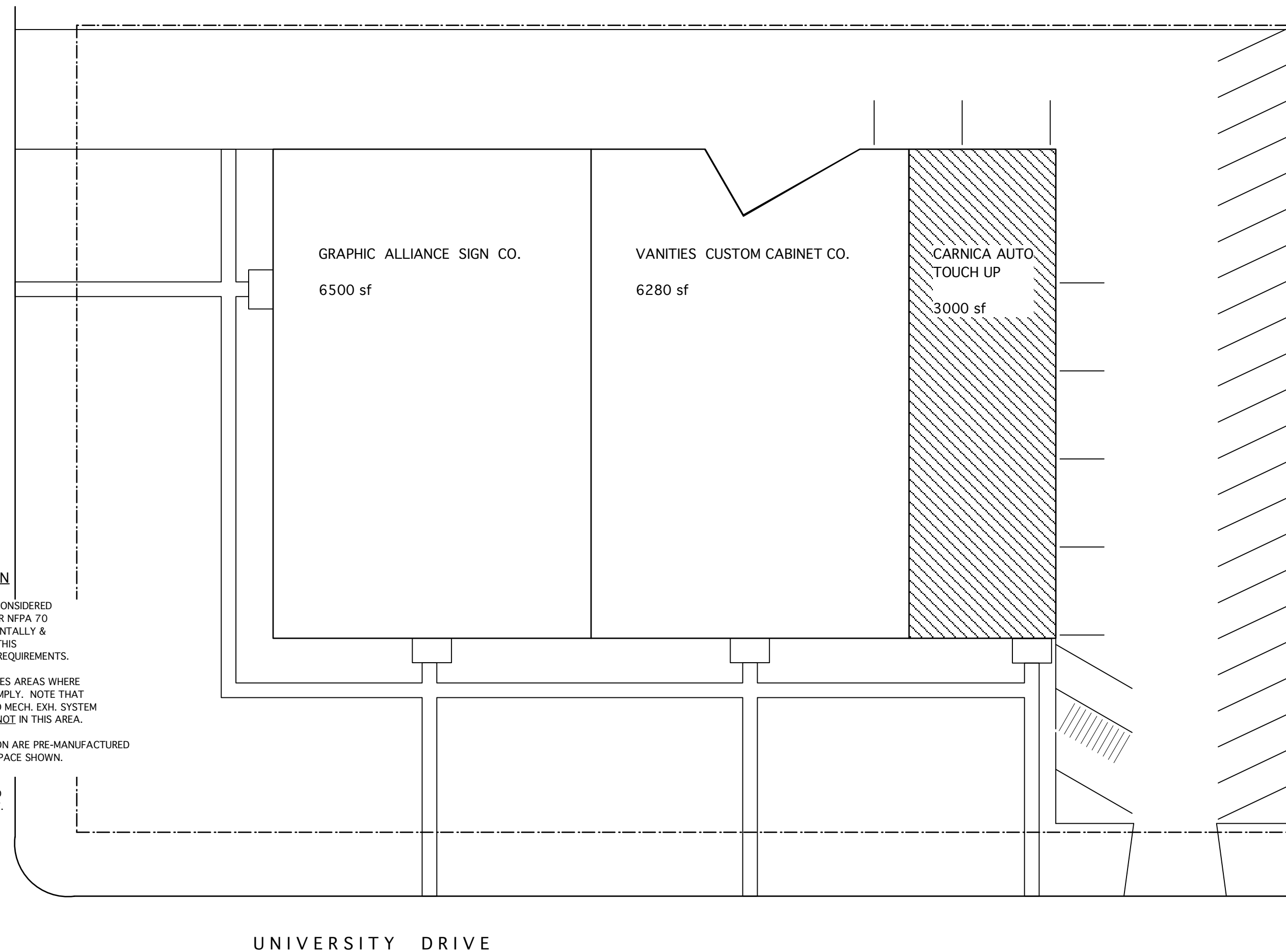
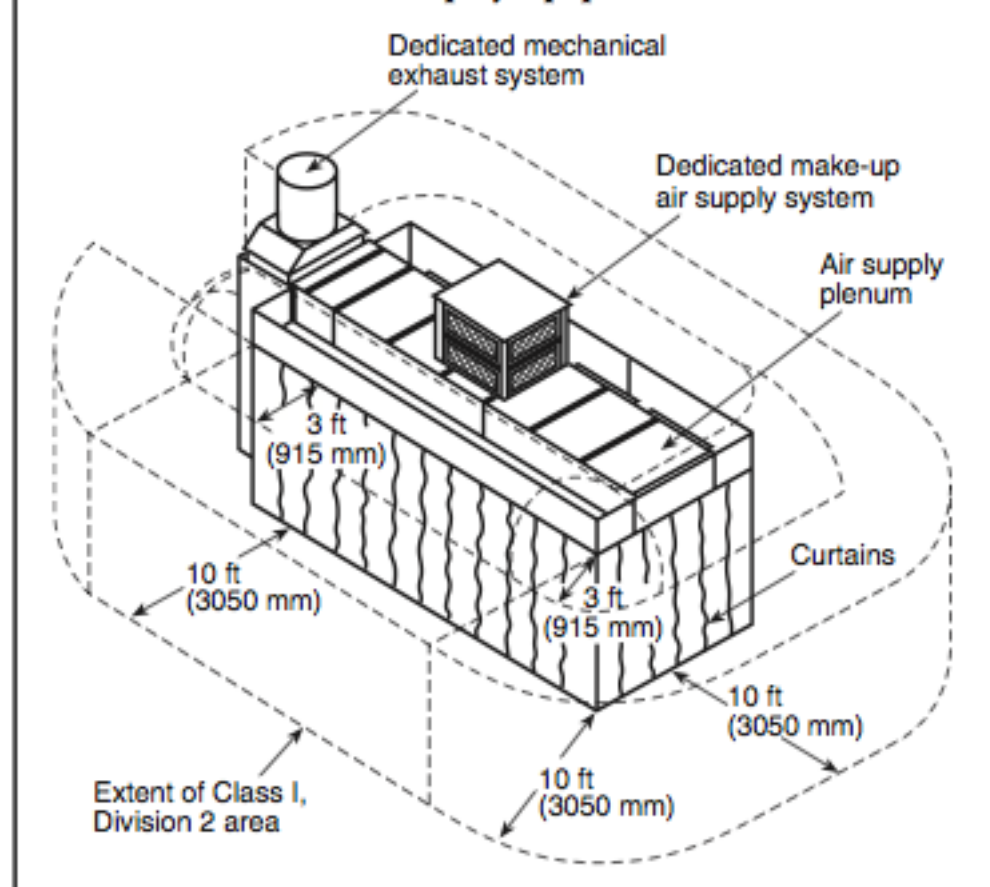
FLOOR PLAN

SCALE: 1/8" = 1'-0"

SCOPE OF WORK:
WORK INDICATED ON THESE DRAWINGS IS FOR THE INSTALLATION OF A VINYL INDUSTRIAL CURTAIN, PREP STATION AND ACCOMPANYING EXHUST & MAKE-UP AIR VENTING. ALL OTHER SPACES SHOWN ARE ASSUMED TO COMPLY WITH ALL APPLICABLE CODES. THERE IS TO BE NO CHANGE TO EXISTING HVAC, PLUMBING & ELECTRICAL SYSTEMS OTHER THAN THE INSTALLATION OF THE THE PREP WORK STATION AS DETAILED.

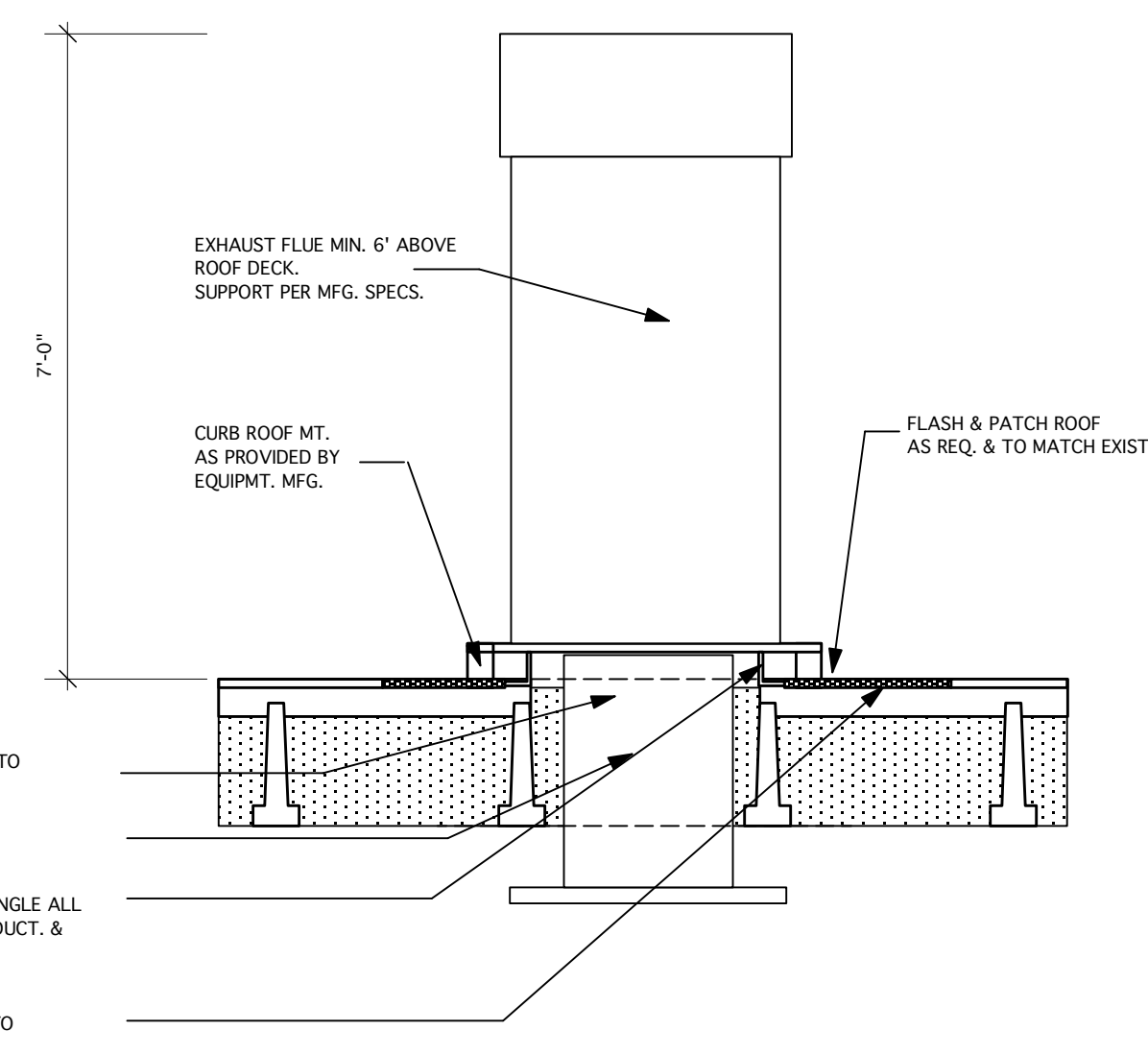
NOTE: THE NEW VINYL CURTAIN ADDS APPROX. 1.2 LBS/LF TO THE LOAD OF THE EXIST. PRECAST CONCRETE DECK & STEEL TRUSS ROOF CONSTRUCTION. THE EXISTING ROOF CONSTRUCTION CAPABLE OF SUPPORTING THIS ADDITIONAL LOAD.

FIGURE 12.3.5(b) Class I (or Class II) Division 2 locations adjacent to a limited finishing workstation with exhaust ventilation not interlocked with spray equipment.



SITE PLAN

SCALE: 1" = 20'



THRU ROOF SECTION

SCALE: 1/2" = 1'-0"

NOTE: VERIFY THAT ROOF CONSTRUCTION MATCHES THIS DETAIL. IF WHEN DOING DEMO WORK, DIFFERENT CONDITIONS ARE FOUND, NOTIFY ARCHITECT & AWAIT FURTHER DIRECTION.

INTERIOR SPACE EQUIPMENT INSTALLATION:
CARNICA AUTO TOUCH-UP
208 W. UNIVERSITY DR., ARLINGTON HEIGHTS, ILLINOIS

FRED POLITO
Architect

1544 Shermer Road
Northbrook, IL 60062

Tel: 847.272.3625
Fax: 847.272.3965

I CERTIFY THAT THESE DRAWINGS WERE PREPARED BY ME OR UNDER MY DIRECT SUPERVISION AND CONTROL AND TO THE BEST OF MY KNOWLEDGE AND BELIEF COMPLY WITH THE REQUIREMENTS OF ALL APPLICABLE BUILDING CODES.
FRED POLITO - ARCHITECT.

Exp. Date:
11/30/2016

FRED POLITO
01-8414
Architect's Seal

DRAWING DATE:
05/05/16

DRAWING NO.

A-1

OF 1

ALL WORK AND MATERIALS USED ON THIS PROJECT SHALL BE PER:
International Residential Code, 2012 (adopted 05/08/12, Effective 09/01/12)
International Building Code, 2012 (adopted 05/08/12, Effective 09/01/12)
International Mechanical Code, 2012 (adopted 05/08/12, Effective 09/01/12)
International Fuel Gas Code, 2012 (adopted 05/08/12, Effective 09/01/12)
International Property Maintenance Code, 2012 (adopted 05/08/12, Effective 09/01/12)
IL Plumbing Code, 2004/International Plumbing Code, 2012 (adopted 05/08/12, Effective 09/01/12)
National Electrical Code, 2011 (adopted 05/08/12, Effective 09/01/12)
International Fire Code, 2012 (adopted 05/08/12, Effective 09/01/12)
Tree Preservation Ordinance (adopted 02/14/06)
International Energy Conservation Code, 2012
1997 State of Illinois Accessibility Code