



PC-00

Variation and Special Use Permit Application

Our Saviour's Lutheran Church

1234 N Arlington Heights Road

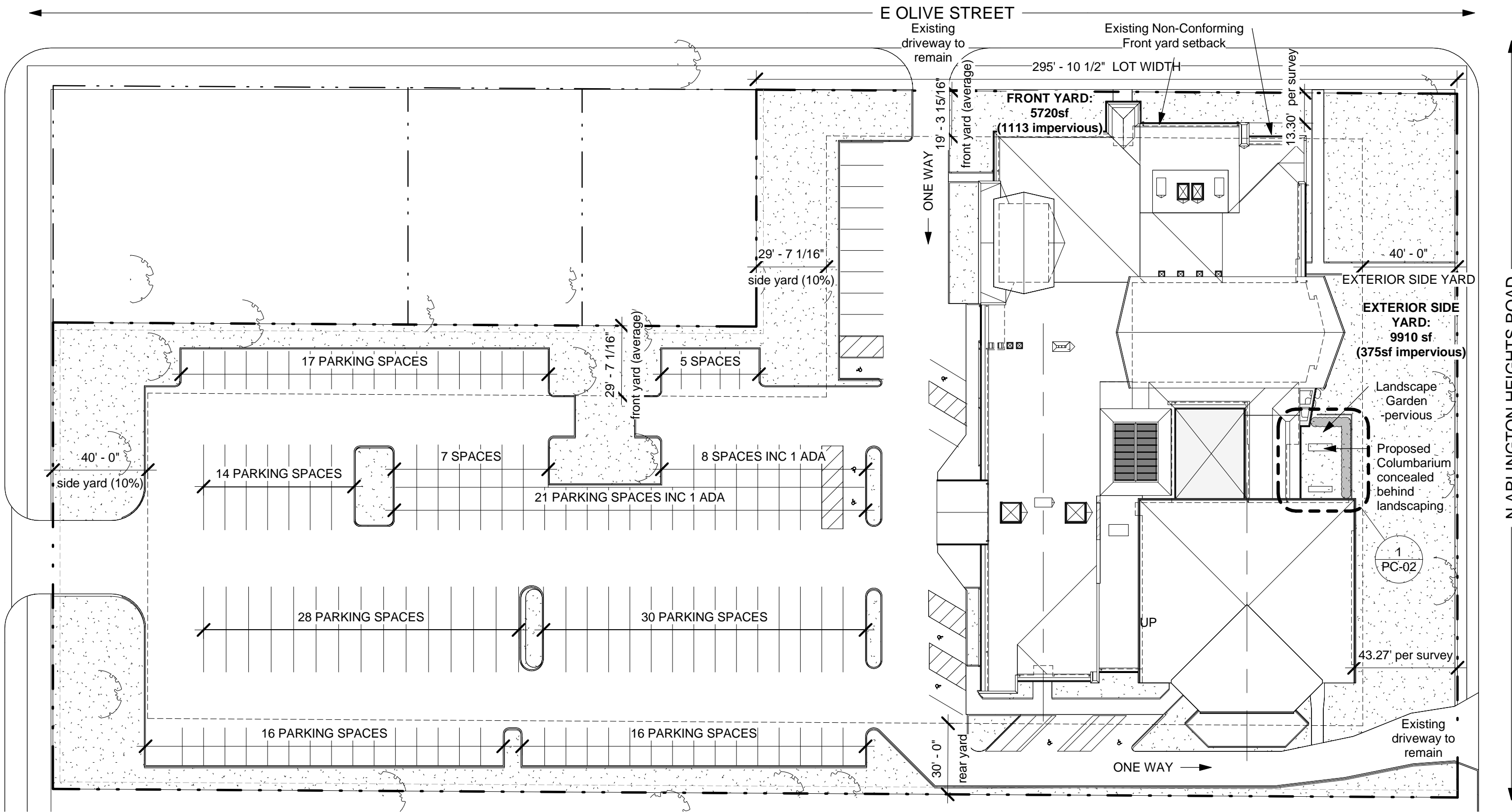
Arlington Heights, IL 60004

06/02/2016

**Wheeler
Kearns
Architects**

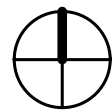
343 S Dearborn St Ste 200
Chicago Illinois 60604
312 939 7787

wkarch.com



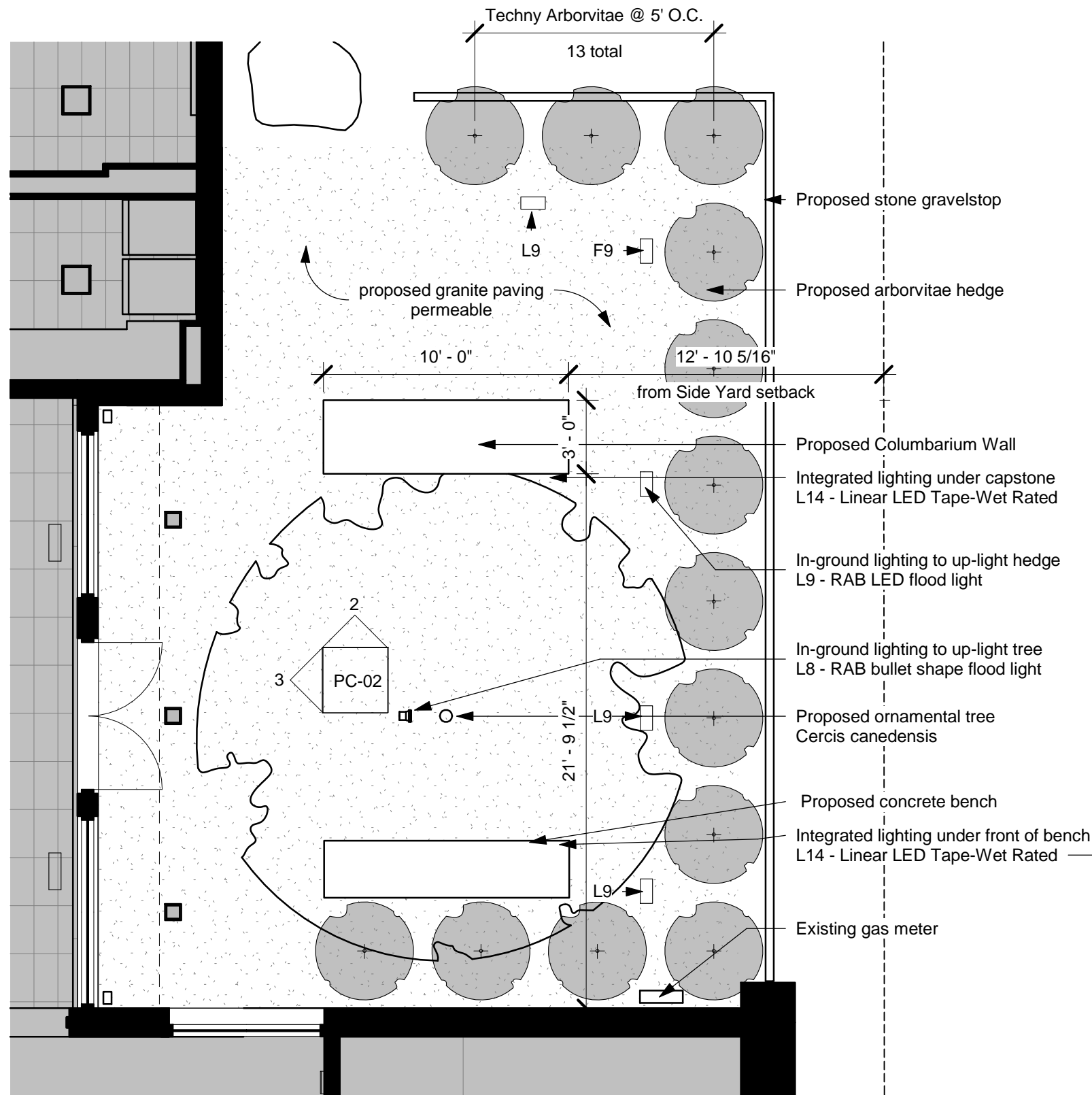
PC-01
SITE PLAN
 Our Saviour's Lutheran Church
 1234 N Arlington Heights Road
 Arlington Heights, IL 60004
 06/02/2016

① **Proposed Site Plan**
 1" = 40'-0"

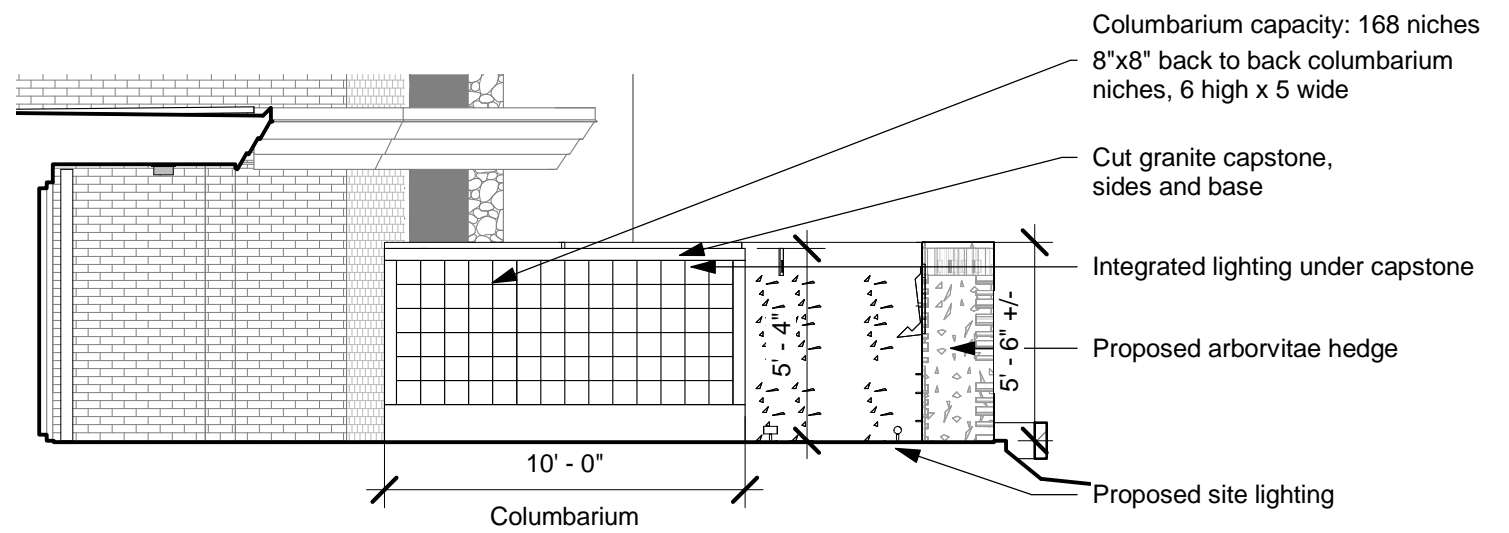


P.I.N.# 0320305026
 Zoning: R-3
 Site Gross Area: 146,522sf
 Special Use Application: Columbarium
 Variation: Columbarium as an Accessory Structure in a side or front yard

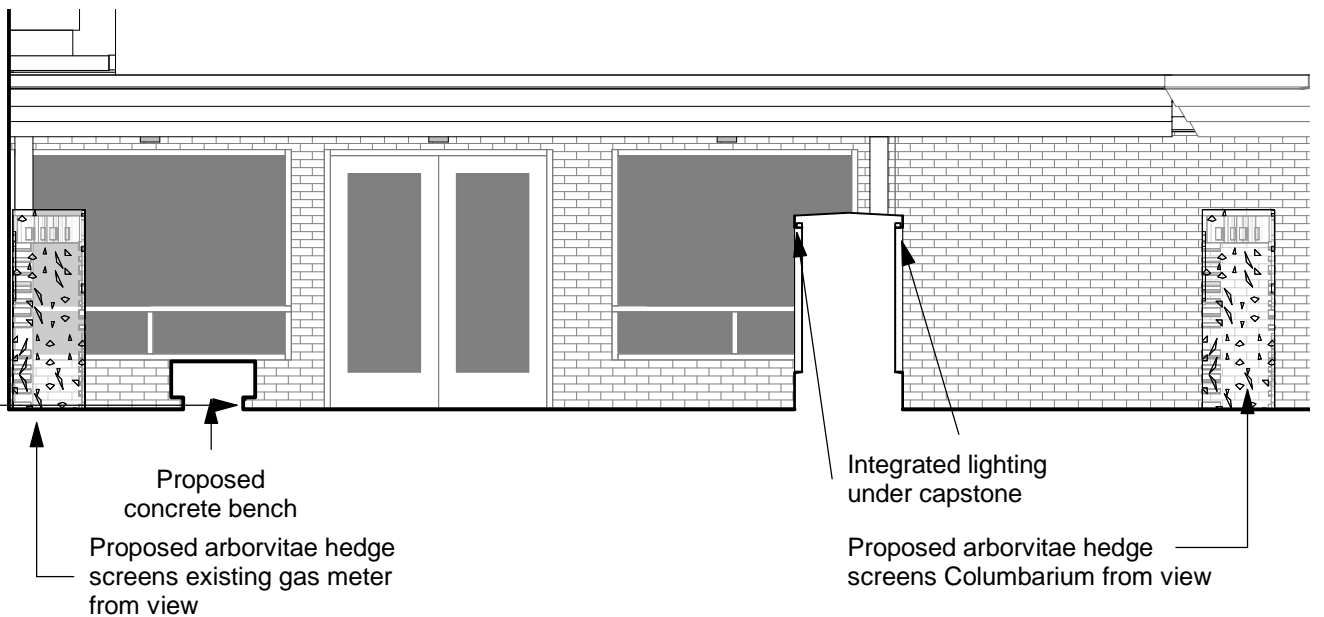
**Wheeler
 Kearns
 Architects**
 343 S Dearborn St Ste 200
 Chicago Illinois 60604
 312 939 7787
 wkarch.com



1 Proposed Columbarium Plan
 3/16" = 1'-0"



2 Proposed North Elevation
 3/16" = 1'-0"



3 Proposed West Elevation
 3/16" = 1'-0"

PC-02

PROPOSED COLUMBARIUM - PLAN AND ELEVATIONS

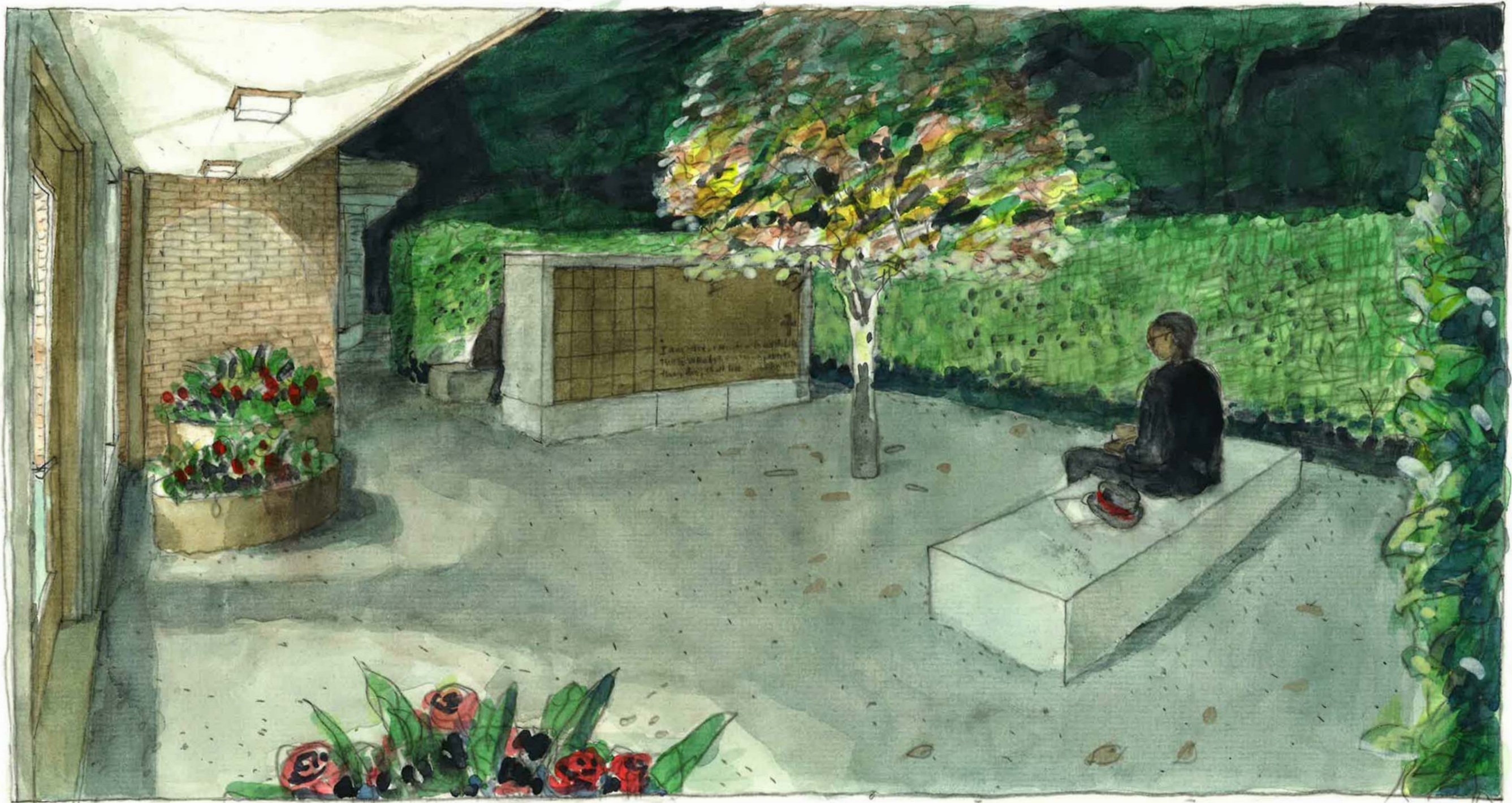
Our Saviour's Lutheran Church
 1234 N Arlington Heights Road
 Arlington Heights, IL 60004

06/02/2016

**Wheeler
 Kearns
 Architects**

343 S Dearborn St Ste 200
 Chicago Illinois 60604
 312 939 7787

wkarch.com



Proposed night time view within Landscape Garden

PC-03

RENDERING - LANDSCAPED GARDEN FROM LINK

Our Saviour's Lutheran Church

1234 N Arlington Heights Road

Arlington Heights, IL 60004

06/02/2016

**Wheeler
Kearns
Architects**

343 S Dearborn St Ste 200
Chicago Illinois 60604
312 939 7787

wkarch.com



Proposed view from Arlington Heights Road

PC-05

RENDERING - VIEW FROM ARLINGTON HEIGHTS ROAD

Our Saviour's Lutheran Church

1234 N Arlington Heights Road

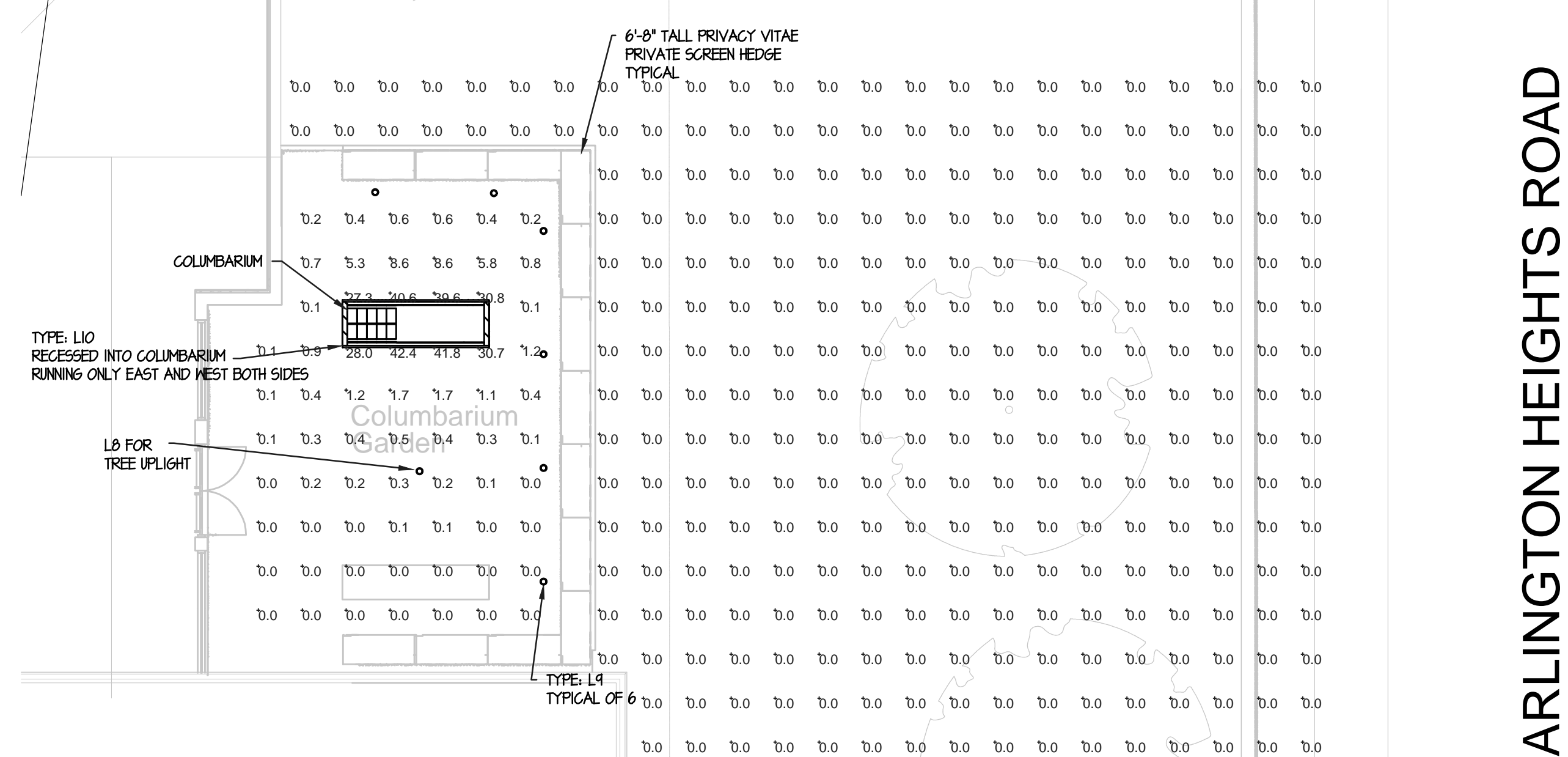
Arlington Heights, IL 60004

06/20/16

**Wheeler
Kearns
Architects**

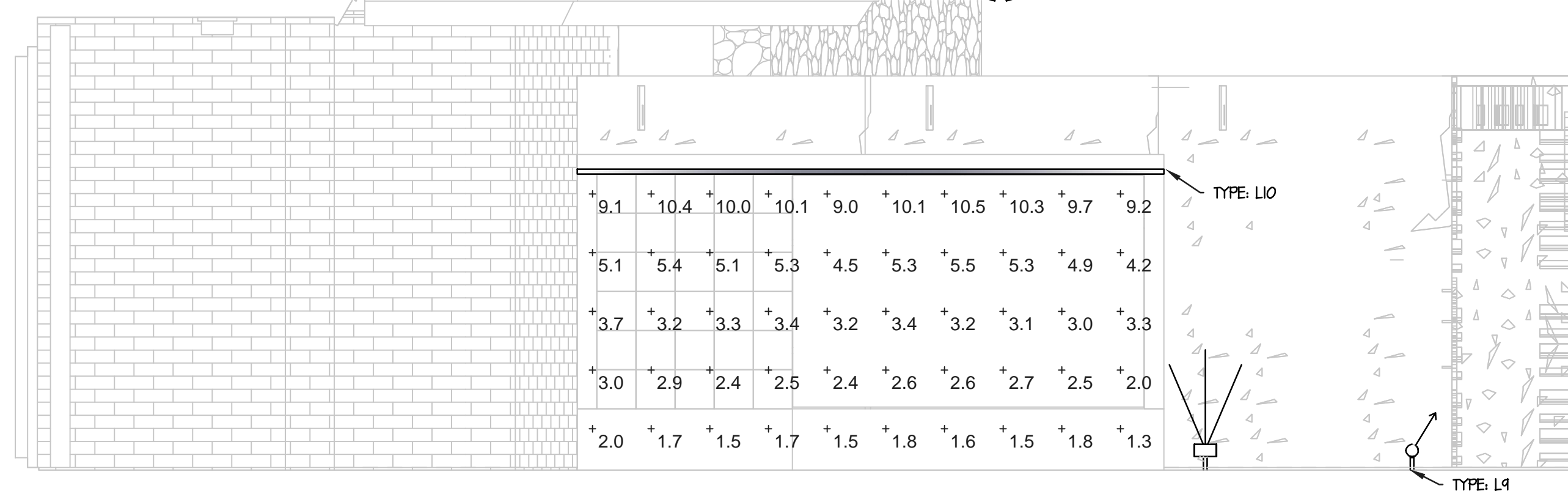
343 S Dearborn St Ste 200
Chicago Illinois 60604
312 939 7787

wkarch.com

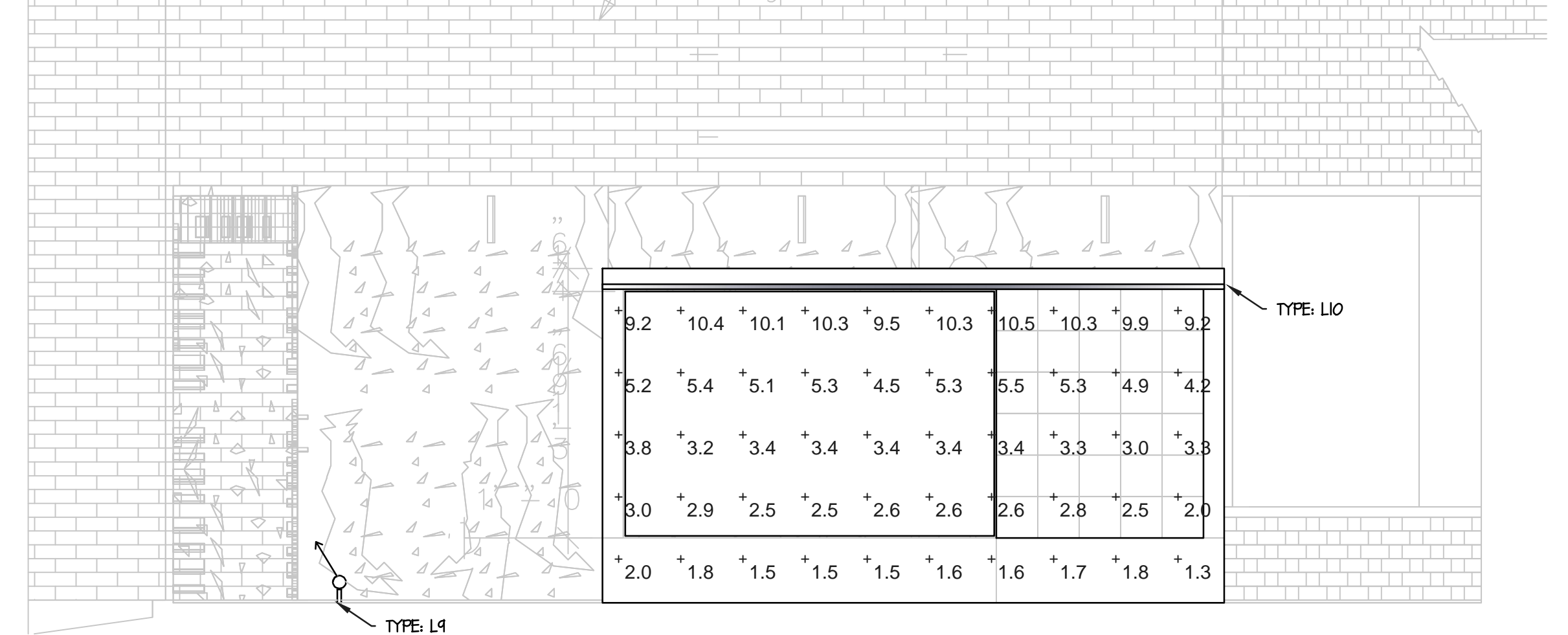


ARLINGTON HEIGHTS ROAD

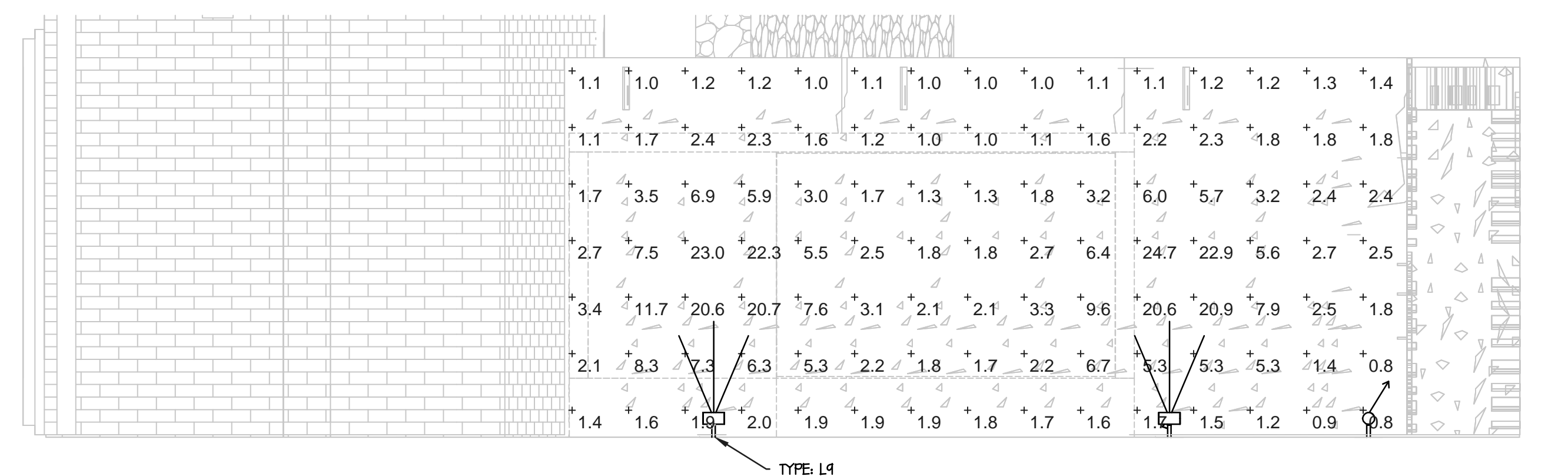
COLUMBARIUM PHOTOMETRIC STUDY
SCALE 1/2"=1'-0"



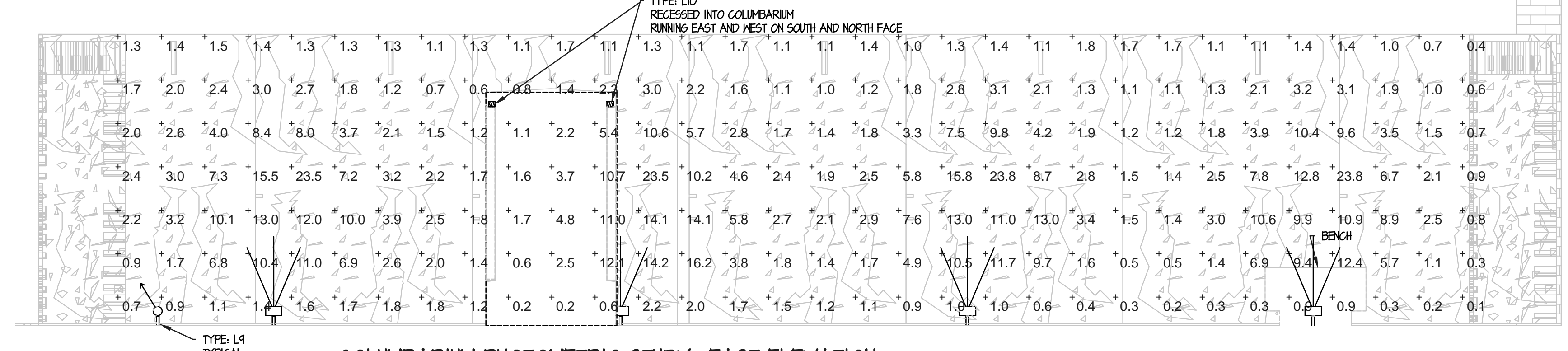
COLUMBARIUM PHOTOMETRIC STUDY- SOUTH FACE ELEVATION
SCALE 1/2"=1'-0"



COLUMBARIUM PHOTOMETRIC STUDY- NORTH FACE ELEVATION
SCALE 1/2"=1'-0"



COLUMBARIUM PHOTOMETRIC STUDY- NORTH HEDGE
SCALE 1/2"=1'-0"



COLUMBARIUM PHOTOMETRIC STUDY- EAST ELEVATION
SCALE 1/2"=1'-0"

TYPE: L8/L9

HNLLED26YA

Project: _____ Type: _____
Prepared By: _____ Date: _____

| Driver Info | | LED Info | |
|--------------|------------------|-----------------|--------|
| Type: | Constant Current | Watts: | 28W |
| 120V: | 0.24A | Color Temp: | 3000K |
| 208V: | 0.15A | Color Accuracy: | 81 CRI |
| 240V: | 0.13A | L70 LifeSpan: | 10000 |
| 277V: | 0.11A | Lumens: | 1899 |
| Input Watts: | 27W | Efficiency: | 64 LPW |
| Efficiency: | 87% | | |

Bullet shape die cast aluminum hood with 26 Watt LED Light Engine. Comes with narrow spotlight reflector installed.
Color: Bronze Weight: 4.8 lbs

Technical Specifications

Listings:
UL Listing: Suitable for wet locations. Suitable for ground mounting.
IESNA LM-79 & LM-80 Testing: RAB LED luminaires have been tested by an independent laboratory in accordance with IESNA LM-79 and LM-80, and have received the Department of Energy Lighting Facts label.

Electrical:
Driver: Constant Current, 700mA, 100-277V with 40V surge protection, 120V, 0.24A, 208V, 0.15A, 240V, 0.13A, 277V, 0.11A, 50/60Hz, THD < 20%, Power Factor: 99%
THD: 8.4% at 120V, 9.2% at 277V
Optical: NEMA Type: 21 x 2V Beam Spread
LED Characteristics: Multi-chip, high-output, long-life LEDs
Color Stability: RAB LEDs exceed industry standards for chromatic stability.
Color Uniformity: RAB's range of CCT (Correlated Color Temperature) follows the guidelines of the American National Standards Institute for the Chromaticity of Solid State Lighting (SSL) Products, ANSI C78.377, 2011.

Construction:
Cold Weather Starting: Minimum starting temperature is -40°F/-40°C
Thermal Management: Superior heat sinking with external Air-Flow fins
Housing: Precision die-cast aluminum housing, lens frame and mounting arm
Reflector: Semi-specular, vacuum-metallized polycarbonate
Mounting: Heavy duty mounting arm with "O" ring seal & stainless steel screws

Other:
California Title 24: HNLLED26 complies with 2013 California Title 24 building and electrical codes as a commercial outdoor non-pole-mounted fixture < 30 Watts when used with a photometer control. Select catalog number PCS900 (120V) or PCS1000277 (277V) to order a photometer.
Country of Origin: Designed by RAB in New Jersey and assembled in the USA by RAB's IREX Local workers.
Buy American Act Compliant: This product is a COTS item manufactured in the United States, and is compliant with the Buy American Act.
Recovery Act (ARRA) Compliant: This product complies with the 52.225-21 "Required Use of American Iron, Steel, and Manufactured Goods: Buy American Act- Construction Materials (October 2010).
Trade Agreements Act Compliant: This product is a COTS item manufactured in the United States, and is compliant with the Trade Agreements Act.
GSA Schedule: Suitable in accordance with FAR Subpart 25.4.

Need help? Tech help line: (888) RAB-1080 Email: sales@rabweb.com Website: www.rabweb.com
Copyright © 2014 RAB Lighting Inc. All Rights Reserved. Note: Specifications are subject to change at any time without notice. Page 1 of 2

TYPE: L10

iQ67
4.4 W/FT
WET RATED

COMPATIBLE EXTRUSIONS

iQ67 - 25 - 50 - 90 - 4.4
iQ Series Color Temp Chip CRI Watts Per Ft

FLEXIBLE TAPE LIGHTS

iQ67-25-50-90-4.4
Max Tape Length: 21ft | Color Temp: 2500K | Voltage: 24VDC
CRI: 90+ | LM: 79 | Lumens Per Ft: 4.4 | Lumens Per Ft: 330

iQ67-27-50-90-4.4
Max Tape Length: 21ft | Color Temp: 2700K | Voltage: 24VDC
CRI: 90+ | LM: 79 | Lumens Per Ft: 4.4 | Lumens Per Ft: 330

iQ67-30-50-90-4.4
Max Tape Length: 21ft | Color Temp: 3000K | Voltage: 24VDC
CRI: 90+ | LM: 79 | Lumens Per Ft: 4.4 | Lumens Per Ft: 330

iQ67-35-50-90-4.4
Max Tape Length: 21ft | Color Temp: 3500K | Voltage: 24VDC
CRI: 90+ | LM: 79 | Lumens Per Ft: 4.4 | Lumens Per Ft: 330

iQ67-40-50-90-4.4
Max Tape Length: 21ft | Color Temp: 4000K | Voltage: 24VDC
CRI: 90+ | LM: 79 | Lumens Per Ft: 4.4 | Lumens Per Ft: 330

Dimensions:
Cut Length: 3.94" (100mm)
End Cap: 1.5" x 0.5" x 0.25"

NOTE:
Cutting sections of LED tape allows for changes in the field.
4.4 watts per foot = cut every 3.94"
*Lead wire comes standard on all LEDs in 11.5" (292mm)
*3 year warranty

© 2016, Q-Tran Inc. 155 Hill St, Milford, CT 06460. All rights reserved. P: 203-367-8777 • F: 203-367-8771 • E: sales@q-tran.com • www.q-tran.com

STATISTICS

| Description | Symbol | Avg |
|------------------------|--------|--------|
| EAST HEDGE WALL | + | 5.4 fc |
| GARDEN | + | 4.1 fc |
| NORTH HEDGE WALL | + | 3.8 fc |
| NORTH SIDE COLUMBARIUM | + | 5.1 fc |
| OUTSIDE OF HEDGE WALL | + | 0.0 fc |
| SOUTH HEDGE WALL | + | 0.3 fc |
| SOUTH SIDE COLUMBARIUM | + | 5.0 fc |

LUMINAIRE SCHEDULE

| Symbol | Label | Catalog Number | Description | Lamp | File | Lumens | LLF | Watts |
|--------|-------|-------------------------|--|--|-------------------------------|----------|------|-------|
| ○ | L9/L8 | HNLLED26Y (NARROW SPOT) | CAST METAL HOUSING, BROWN PAINTED FLAT METAL HEAT SINK MOUNTING PLATE, CAST BROWN PAINTED FINNED METAL HEAT SINK, 1 CIRCUIT BOARD WITH 1 LED, MOLDED PLASTIC REFLECTOR WITH SPECULAR FINISH AND CLEAR PLASTIC CONVEX INNER LENS WITH 3 INTEGRAL MOUNTING POSTS, MOLDED WHITE PLASTIC FORWARD REFLECTOR MOUNTING CYLINDER, CLEAR FLAT GLASS LENS WITH HOLOGRAPHIC PLASTIC INTERIOR OVERLAY IN CAST BROWN PAINTED METAL FRAME. | ONE WHITE MULTI-CHIP LIGHT EMITTING DIODE (LED), AIMED AT THE HORIZON. | IB81783-clies | Absolute | 0.95 | 26.7 |
| — | L10 | iQ67-30-50-90-4.4 | | | iQ67-30-50-90-4.4-3.94INCLies | 100 | .95 | 1.44 |

NESKO
DESIGN / BUILD
ELECTRIC

BULLEY & ANDREWS
Building Maintainers

Our Saviour's Lutheran Church
Arlington Heights, Illinois

2-26-16 ISSUED FOR PERMIT COMMENTS

Our Saviour's Lutheran Church
Arlington Heights, Illinois
1234 ARLINGTON HEIGHTS RD.
ARLINGTON HEIGHTS, IL

Checked By: _____
Designed By: _____
E-001.A

ELECTRICAL CONTRACTOR

GENERAL CONTRACTOR

CLIENT

REVISIONS

PROJECT NAME