

**PINE**

**AVENUE**

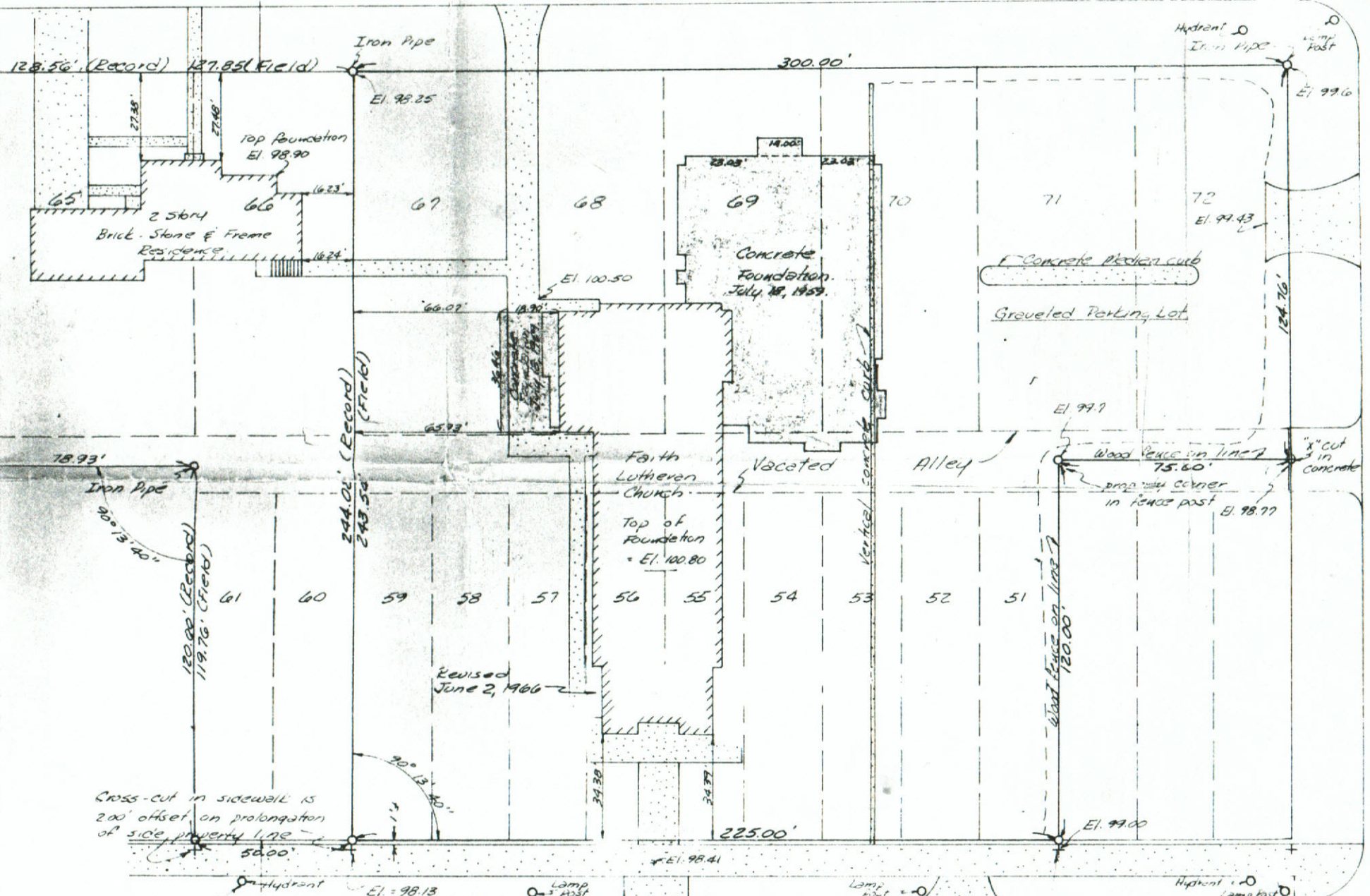
EI. 97.57

(Concrete Pavement)

EI. 99.01

EI. 99.04

EI. 98.87



**PARK STREET**

**PARK STREET**

(Concrete Paved)

Cross-cut in sidewalk is 2.00' offset on prolongation of side property line

Cross-cut in sidewalk is 2.00' offset on prolongation of side property line.

Elevation origin 100.00 = top of hydrant spindle

**STATE**

**ROAD**

(Bituminous paving over concrete)

EI. 98.38

EI. 98.75

EI. 99.24