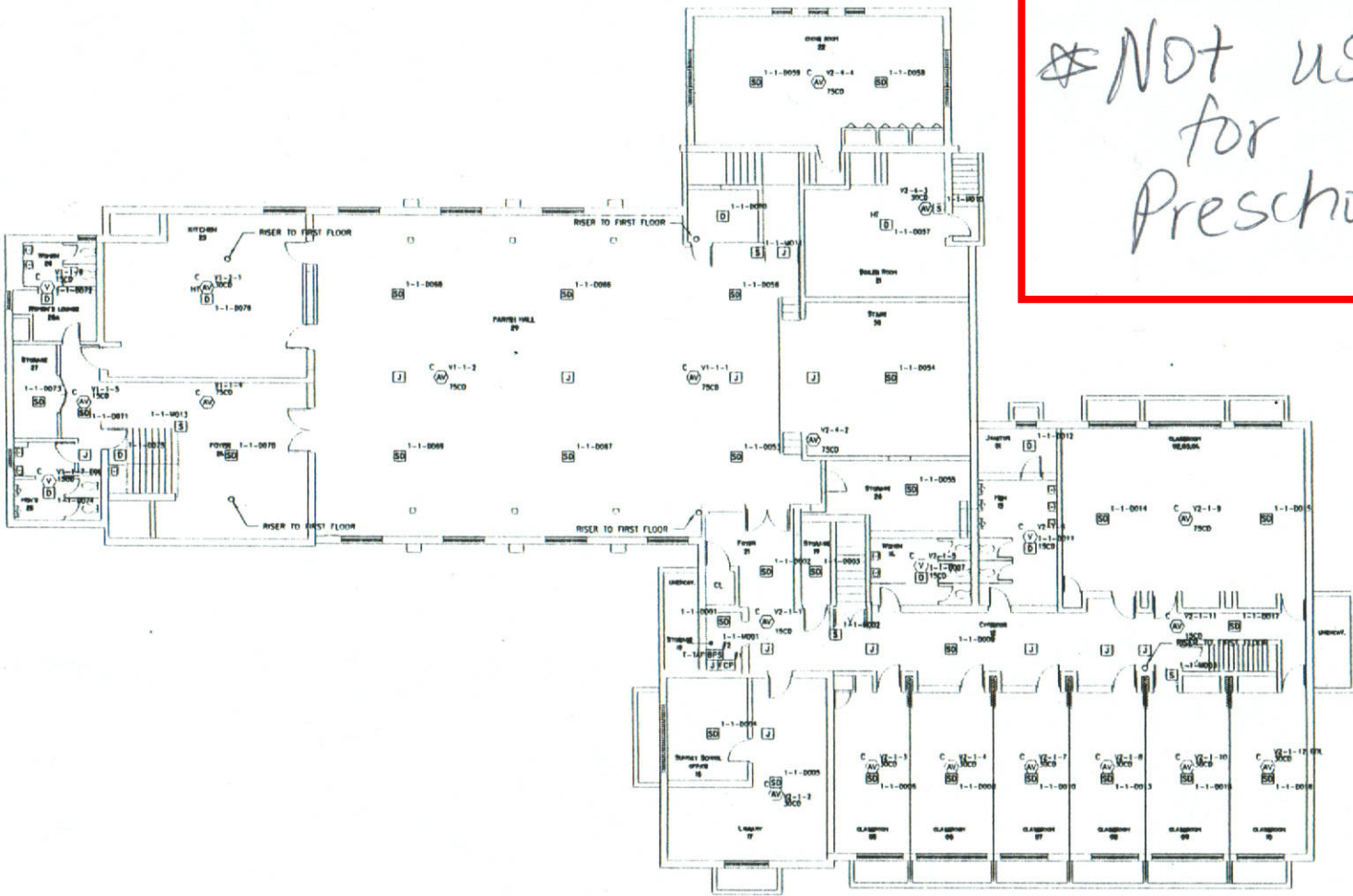


Basement

~~NOT~~ used for Preschool



1 FIRE ALARM BASEMENT ZONE MAP
SCALE: 1/8" = 1'-0"



WIRE LEGEND:

MAC	14/2 AWG, FFLR	A
SLC	16/2 AWG, FFLR	B
AUX PWR	14/2 AWG, FFLR	C
FMA	16/2 AWG, FFLR	D
AUX PWR	14/2 AWG, FFLR	E
MAC SING	14/2 AWG, FFLR	F
RACEWAY	MULTICONDUCTOR RACEWAY	A.B.C.

NOTE: ALL WIRING TO BE ENCLOSED IN APPROVED FIREWIRE RACEWAY UNLESS OTHERWISE NOTED

LEGEND

SYMBOL	DESCRIPTION
FCP	FIRE ALARM CONTROL PANEL
BPS	BOOSTER POWER SUPPLY WITH MONITOR MODULE
MR	ADDRESSABLE RELAY FOR MAGNETIC DOORHOLDS
AV	AUDIO VISUAL
V	VISUAL
SR	BEAM SMOKE DETECTOR REFLECTOR
ST	BEAM SMOKE DETECTOR TRANSMITTER
FMA	FIRE ALARM ANNUCATOR
D	HEAT DETECTOR
J	JUNCTION BOX
H	MAGNETIC DOOR HOLD OPEN DEVICE
S	MANUAL PULL STATION
SMR	SINGLE INPUT MONITOR MODULE
SD	SMOKE DETECTOR PHOTOELECTRIC
RTS	REMOTE KEY TEST SWITCH

APPROVAL STAMP



DEVICE LEGEND:

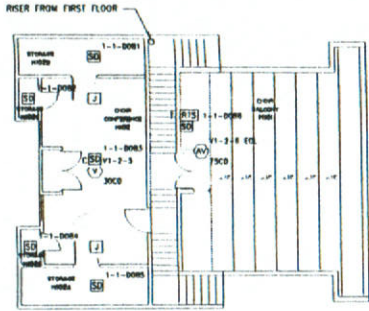
DEVICE SUBSCRIPT (SEE SUBSCRIPTS)	DEVICE IDENTIFIER NUMBER AND DEVICE LOCATION ALONG DROP (POWER SUPPLY 1, CIRCUIT 1, DETECTOR 12)
C/WP/H	V1-1-4
AV	110CD
SD	1-1-0012

SUBSCRIPTS:

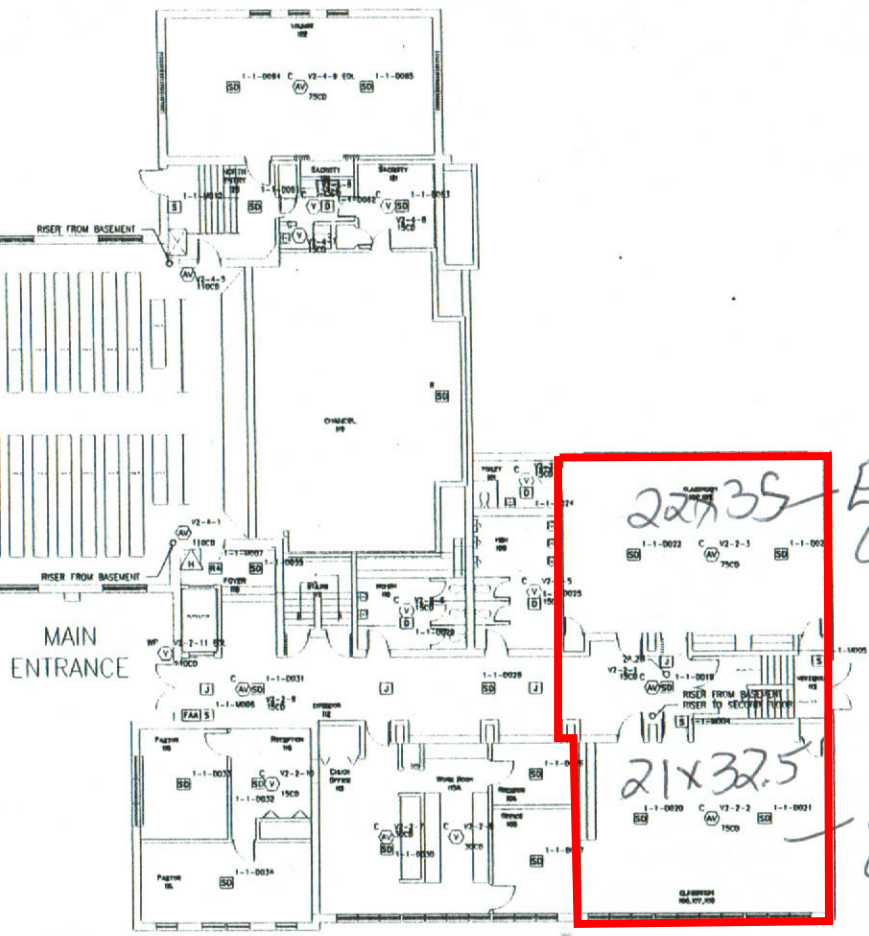
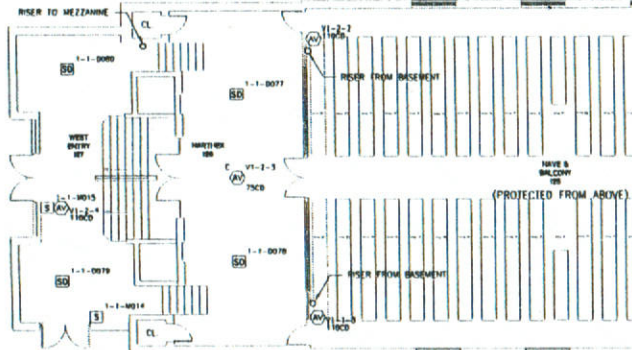
WP	WEATHERPROOF	HE	HIGH TEMPERATURE
E	EXTINGUISHING DEVICE	C	CEILING MOUNTED
FL	END OF LINE RESISTOR	H	HIGH GAMBELA
DC	DROP CEILING	MC	MIPD CEILING

DRAWING TITLE: FIRE ALARM BASEMENT ZONE MAP		REVISIONS:	
SCALE: 1/8" = 1'-0"	DATE: 4-5-11	A.	
JOB: FAITH LUTHERAN CHURCH 421 SOUTH ARLINGTON HEIGHTS ROAD ARLINGTON HEIGHTS, IL 60005		PHONE: 847-265-4400 FAX: 847-265-4401	
DRAWN BY: RIZWAN HUSSAIN		CONTRACTOR: ARLINGTON SECURITY CO., LLC 218 EAST GROVE STREET ARLINGTON HEIGHTS, IL 60005	
APPROVED BY: C.U.J.O.		CONTACT: DANIEL ELIA III PHONE: 847-392-7997	
PROJECT NO: D040111-1063		AL3.00	

Main Level



2 FIRE ALARM MEZZANINE ZONE MAP
SCALE: 1/8"=1'-0"



1 FIRE ALARM FIRST FLOOR ZONE MAP
SCALE: 1/8"=1'-0"



WIRE LEGEND:

NAC	14/2 AWG, FFLR	A
SLC	16/2 AWG, FFLR	B
AUX PWR	14/2 AWG, FFLR	C
FAA	16/2 AWG, FFLR	D
FLX PWR	14/2 AWG, FFLR	E
SAC S/W	14/2 AWG, FFLR	F
RACEWAY	MULTICONDUCTOR RACEWAY	A,B,C

NOTE: ALL WIRING TO BE ENCLOSED IN APPROVED FIREWIRE RACEWAY UNLESS OTHERWISE NOTED

LEGEND

SYMBOL	DESCRIPTION
[FCP]	FIRE ALARM CONTROL PANEL
[BPS]	BOOSTER POWER SUPPLY WITH MONITOR MODULE
[AR]	ADDRESSABLE RELAY FOR MAGNETIC SCRAMMERS
[AV]	AUDIO VISUAL
[V]	VISUAL
[BS]	BEAM SMOKE DETECTOR REFLECTOR
[T]	BEAM SMOKE DETECTOR TRANSMITTER
[FAA]	FIRE ALARM AMBICATOR
[D]	HEAT DETECTOR
[X]	JUNCTION BOX
[M]	MAGNETIC DOOR HOLD OPEN DEVICE
[S]	MANUAL PULL STATION
[AMM]	SINGLE INPUT MONITOR MODULE
[SDP]	SMOKE DETECTOR PHOTOELECTRIC
[RTS]	REMOTE KEY TEST SWITCH

APPROVAL STAMP

DEVICE LEGEND:

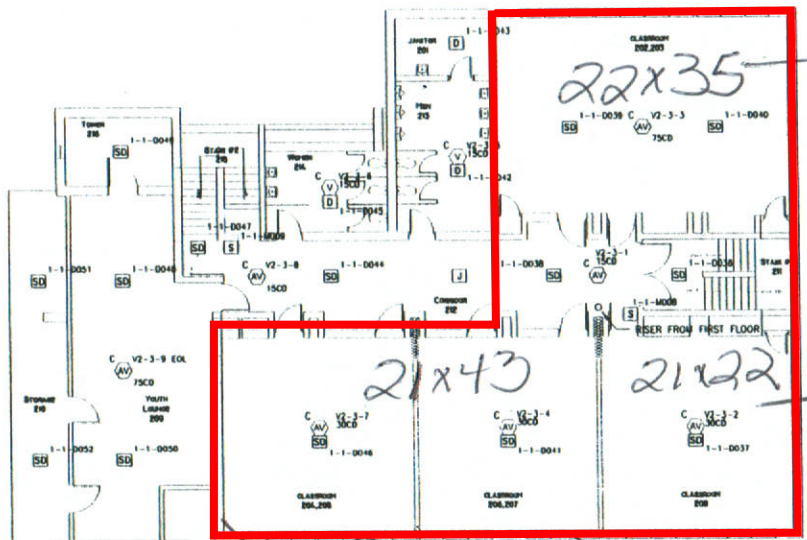
W/P	WEATHERPROOF	HT	HIGH TEMPERATURE
W	EXISTING DEVICE	C	CERAMIC INSULATED
TEL	END OF LINE RESISTOR	H	HIGH CHIRP/SLA
DC	DROP CEILING	HC	HARD CEILING

DEVICE SUBSCRIPTS:
 W/P WEATHERPROOF
 W EXISTING DEVICE
 TEL END OF LINE RESISTOR
 DC DROP CEILING

DEVICE IDENTIFICATION:
 DEVICE IDENTIFICATION (ADDRESS/REFLECTOR) AND ADDRESS FOR PROGRAMMING (PAGE 1, CIRCUIT 1, DETECTOR 12)

DRAWING TITLE: FIRE ALARM FIRST FLOOR & MEZZANINE ZONE MAP		REVISIONS:	
SCALE: 1/8"=1'-0"	JOB: FAITH LUTHERAN CHURCH 431 SOUTH ARLINGTON HEIGHTS ROAD ARLINGTON HEIGHTS, IL 60005	A	
DATE: 4-5-11	ENGINEER: FIRE BY DESIGN, INC. 405 PERRY AVENUE SUITE #5 LAKE VILLA, ILLINOIS 60046	PHONE: 847-265-4400 FAX: 847-265-4401	
DRAWN BY: RIZWAN HUSSAIN	CONTRACTOR: ARLINGTON SECURITY CO. LLC 218 EAST GROVE STREET ARLINGTON HEIGHTS, IL 60005	CONTACT: DANIEL ELIA III PHONE: 847-392-7997	
APPROVED BY: C.U.J.O.	PROJECT NO: 0040111-1063	AL3.01	

2nd floor



New preschool classroom

Teacher work space

1 FIRE ALARM SECOND FLOOR ZONE MAP
SCALE: 1/8"=1'-0"

Large motor room

WIRE LEGEND:

NAC A	14/2 AWG, FPLR	A
SIC B	16/2 AWG, FPLR	B
AUX PWR C	14/2 AWG, FPLR	C
FAA D	16/2 AWG, FPLR	D
AUX PWR E	14/2 AWG, FPLR	E
NAC SYNC F	14/2 AWG, FPLR	F
RACEWAY	MULTICONDUCTOR RACEWAY	A.B.C.

NOTE: ALL WIRING TO BE ENCLOSED IN APPROVED FREEWIRE RACEWAY UNLESS OTHERWISE NOTED

LEGEND

SYMBOL	DESCRIPTION
FCP	FIRE ALARM CONTROL PANEL
BPS	BOOSTER POWER SUPPLY WITH MONITOR MODULE
R4	ADDRESSABLE RELAY FOR MAGNETIC DOORHOLDS
AV	AUDIO VISUAL
V	VISUAL
R	BEAM SMOKE DETECTOR REFLECTOR
ST	BEAM SMOKE DETECTOR TRANSMITTER
FAA	FIRE ALARM ANNUNCIATOR
D	HEAT DETECTOR
J	JUNCTION BOX
H	MAGNETIC DOOR HOLD OPEN DEVICE
S	MANUAL PULL STATION
MAN	SINGLE INPUT MONITOR MODULE
SD	SMOKE DETECTOR PHOTOELECTRIC
RIS	REMOTE KEY TEST SWITCH

APPROVAL STAMP

DEVICE LEGEND:

DEVICE SUBSCRIPT (SEE SUBSCRIPTS) DEVICE CIRCUIT NUMBER AND DEVICE WIRING LOCATION ALONG CIRCUIT (POWER SUPPLY 1, CIRCUIT 1, DEVICE 1)

C/WP/H V1-1-4 1-1-0012

110CD SD

DEVICE IDENTIFICATION DESIGNATION (NOMINAL/DETECTOR) AND ADDRESS FOR PROGRAMMING (NODE 1, CIRCUIT 1, DETECTOR 12)

SUBSCRIPTS:

WP WEATHERPROOF	HT HIGH TEMPERATURE
E EXISTING DEVICE	C CEILING MOUNTED
EOL END OF LINE RESISTOR	H HIGH CANDELA
DC DROP CEILING	HC HARD CEILING

DRAWING TITLE: FIRE ALARM SECOND FLOOR ZONE MAP		REVISIONS: Δ
SCALE: 1/8"=1'-0"	JOB: FAITH LUTHERAN CHURCH 431 SOUTH ARLINGTON HEIGHTS ROAD ARLINGTON HEIGHTS, IL 60005	
DATE: 4-5-11	ENGINEER: FIRE BY DESIGN, INC. 485 PARK AVENUE, SUITE #5 LAKE VILLA, ILLINOIS 60046	PHONE: 847-265-4400 FAX: 847-265-4401
DRAWN BY: RIZWAN HUSSAIN	CONTRACTOR: ARLINGTON SECURITY CO., LLC 218 EAST GROVE STREET ARLINGTON HEIGHTS, IL 60005	CONTACT: DANIEL ELIA III PHONE: 847-392-7997
APPROVED BY: C.U.J.O.		
PROJECT NO: D040111-1063		



AL3.02