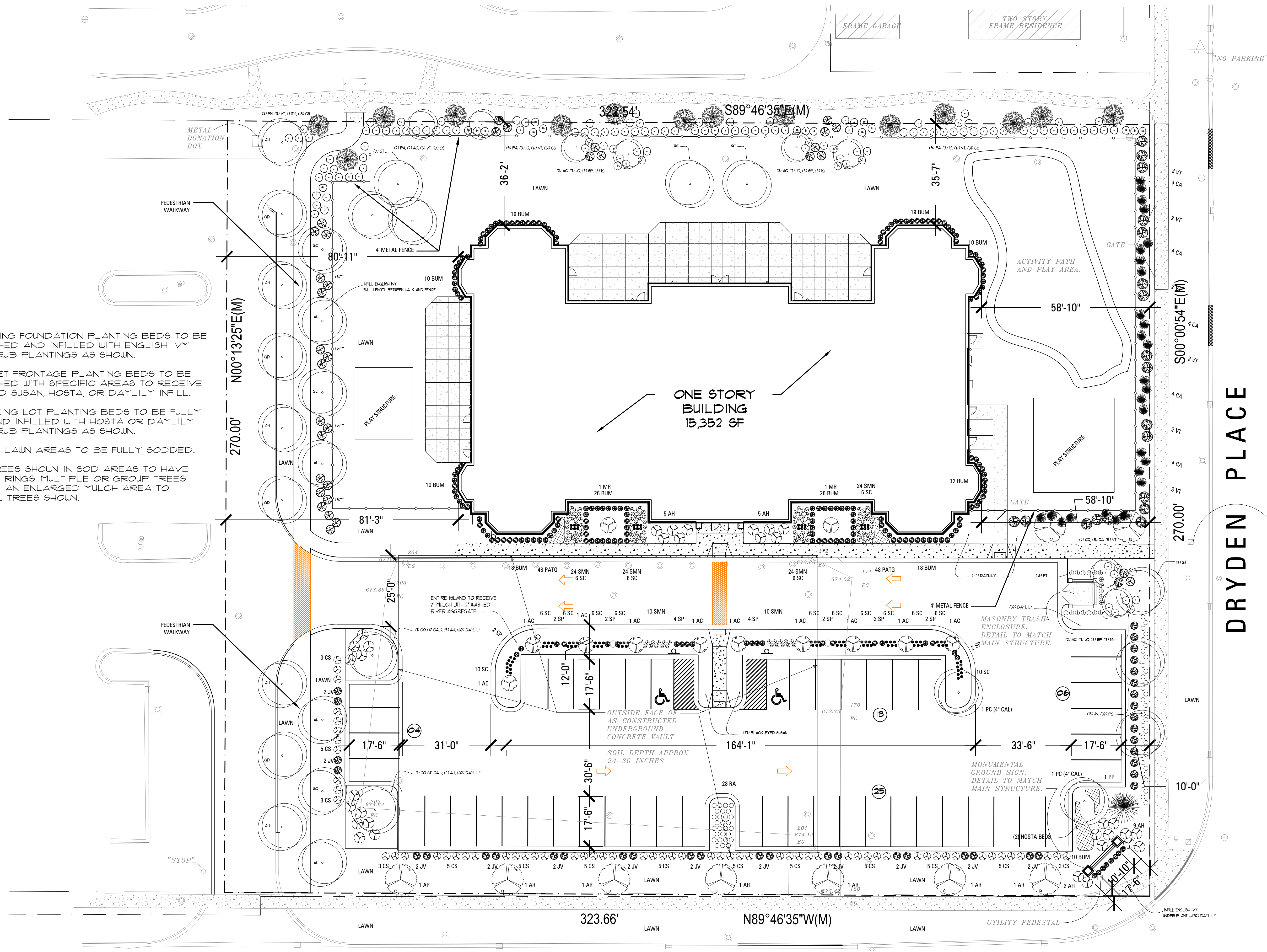


NOTE:

1. ALL BUILDING FOUNDATION PLANTING BEDS TO BE FULLY MULCHED AND INFILLED WITH ENGLISH IVY AROUND SHRUB PLANTINGS AS SHOWN.
2. ALL STREET FRONTAGE PLANTING BEDS TO BE FULLY MULCHED WITH SPECIFIC AREAS TO RECEIVE BLACK-EYED SUSAN, HOSTA, OR DAYLILY INFILL.
3. ALL PARKING LOT PLANTING BEDS TO BE FULLY MULCHED AND INFILLED WITH HOSTA OR DAYLILY AROUND SHRUB PLANTINGS AS SHOWN.
4. ALL OPEN LAWN AREAS TO BE FULLY SODDED.
5. SINGLE TREES SHOWN IN SOD AREAS TO HAVE 5' dia. MULCH RINGS. MULTIPLE OR GROUP TREES SHALL HAVE AN ENLARGED MULCH AREA TO INCLUDE ALL TREES SHOWN.

NOTE:

1. SEE DRAWING SHEET NO. LA-2 FOR PLANT IDENTIFICATION, NOTES AND DETAILS.



KENSINGTON ROAD

DRYDEN PLACE

PROJECT

Kensington School, New Construction

parking lot and landscape improvements
840 East Kensington Road
Arlington Heights, Illinois

Jeffrey J Bulin
landscape architect
BUHLWORK
DESIGN GUILD
landscape architecture

320 Luthin Road
Oak Brook, Illinois 60523
tel 630 325 5340
fax 630 325 5341
mailto:jeff@designguild.com

ARCHITECT

SEE SWORN STATEMENT ON LA-2

REVISIONS

| | |
|--|--|
| | |
| | |
| | |
| | |
| | |

8/11/2016 revised for permit
7/18/2016 issued for permit

TITLE

landscape plan

DATE: 7/15/2016
DRAWN BY: JB
SCALE: as noted

NUMBER
LA-1

1 landscape plan
SCALE: 1/16"=1'-0"

0 8 16 24 40 FEET

NORTH

SITE AND LANDSCAPE NOTES

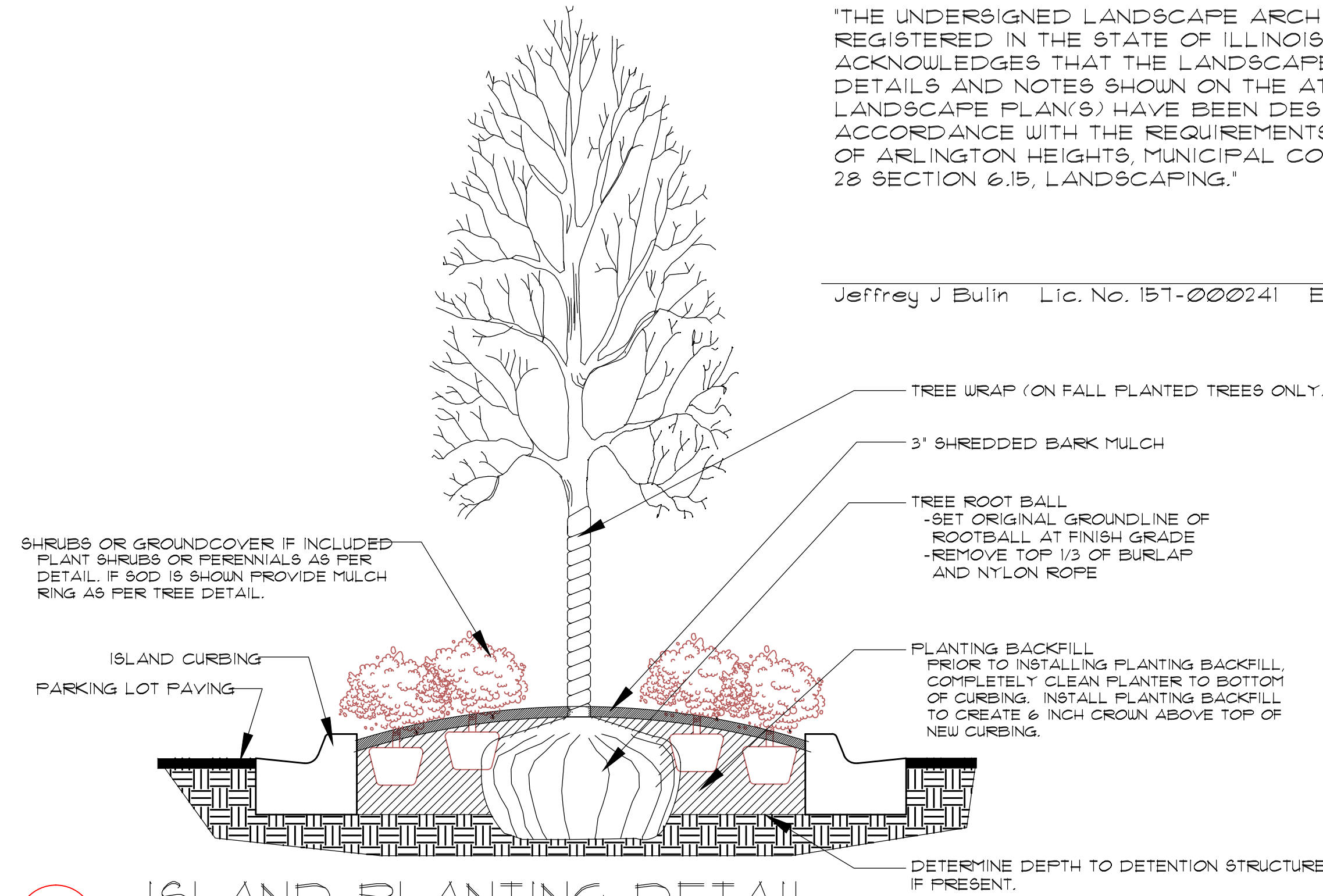
1. ALL WORK MUST COMPLY WITH LANDSCAPE INDUSTRY STANDARDS FOR THE METHODS AND MEANS OF INSTALLATION.
2. ALL SITE WORK MUST COMPLY WITH ILLINOIS ACCESSIBILITY STANDARDS, A.D.A. STANDARDS AND LOCAL BUILDING CODES. MAXIMUM CROSS SLOPE ON ALL NEW WALKS TO BE 2%.
3. PLANT MATERIAL SHALL HAVE BEEN RAISED AT A NURSERY SIMILAR IN CLIMATIC ZONE TO CHICAGO. 'PARK GRADE' PLANTS ARE NOT ACCEPTABLE. SIZE, GRADING STANDARDS, BRANCHING AND BALL SIZE SHALL BE IN ACCORDANCE WITH THE LATEST EDITION OF ANSI Z60.1 BY THE AMERICAN ASSOCIATION OF NURSERYMEN, INC.
4. ALL PLANT MATERIAL SHALL BE FREE OF ANY DEFORMITIES, DISEASE OR INSECT DAMAGE. ANY MATERIAL IMPERFECTIONS INCLUDING BUT NOT LIMITED TO DAMAGED OR CROOKED, DISFIGURED BRANCHES, BARK ABRASION AND SUN-SCALD ARE NOT ACCEPTABLE AND WILL BE REJECTED.
5. TREES NOT EXHIBITING A STRONG CENTRAL SINGLE LEADER WILL BE REJECTED UNLESS CALLED FOR IN THE PLANT SCHEDULE AS MULTI-STEM.
6. REVIEW ALL HARDSCAPE AND PLANT DETAILS PRIOR TO INSTALLATION. THE CONTRACTOR SHALL VERIFY ALL DIMENSIONS AND CONDITIONS AT THE JOB SITE.
7. PAVING CONTRACTOR IS RESPONSIBLE FOR ASSURING PROPER HARDSURFACE DRAINAGE. ESTABLISH GRADES PER EXISTING SITE CONDITIONS, PITCH AND SLOPE AS REQUIRED TO MATCH EXISTING.
8. THE CONTRACTOR IS RESPONSIBLE FOR VERIFYING ALL UTILITIES PRIOR TO STARTING CONSTRUCTION.
9. COORDINATE HARDSCAPE AND PLANT INSTALLATION WITH LANDSCAPE IRRIGATION CONTRACTOR. PROVIDE SLEEVES AND EQUIPMENT LOCATIONS AS REQUIRED. ALL CONTRACTORS ARE RESPONSIBLE FOR CONDITION OF OTHERS WORK AND EXPECTED TO RESTORE ANY COMPLETED WORK THAT IS DAMAGED.
10. VERIFY ABILITY TO REMOVE AND STOCKPILE EXISTING TOPSOIL FOR REPLACEMENT AT COMPLETION OF ROUGH GRADING.
11. PROVIDE PROTECTION FOR ANY EXISTING TREES AND PLANT MATERIAL TO REMAIN. SEE PROTECTION FENCE DETAIL, IF APPLICABLE.
12. MULCH ALL TREES AND SHRUBS WITH MINIMUM 3" PREMIUM BARK MULCH.
13. PREPARE PERENNIAL BEDS WITH 1 C.Y. GARDEN COMPOST PER 100 SF. BED AREA FULLY TILLED TO AN 8" DEPTH.
14. FIELD ADJUST PLANT LOCATIONS TO PROVIDE APPROPRIATE OR CODE REQUIRED SPACING FROM FIRE HYDRANTS, LIGHT AND UTILITY POLES, UTILITY STRUCTURES, DRIVES AND SIDEWALKS.
15. PLANT QUANTITIES IDENTIFIED IN PLANT SCHEDULE ARE FOR CONVENIENCE ONLY. COUNTS SHALL BE VERIFIED AS PER PLAN.
16. ALL PLANT MATERIALS SHALL BE WARRANTED FOR 1-YEAR.
17. AT COMPLETION OF PROJECT REMOVE SECURITY FENCE AND SILT FENCE AND RESTORE LANDSCAPE TO ORIGINAL CONDITION.

SWORN STATEMENT BY LANDSCAPE ARCHITECT

COMMITTS TO THE PREPARATION OF THE LANDSCAPE PLANS IN THE FOLLOWING FORM:

"THE UNDERSIGNED LANDSCAPE ARCHITECT, REGISTERED IN THE STATE OF ILLINOIS, ACKNOWLEDGES THAT THE LANDSCAPE PLAN, DETAILS AND NOTES SHOWN ON THE ATTACHED LANDSCAPE PLAN(S) HAVE BEEN DESIGNED IN ACCORDANCE WITH THE REQUIREMENTS OF VILLAGE OF ARLINGTON HEIGHTS, MUNICIPAL CODE, CHAPTER 28 SECTION 6.15, LANDSCAPING."

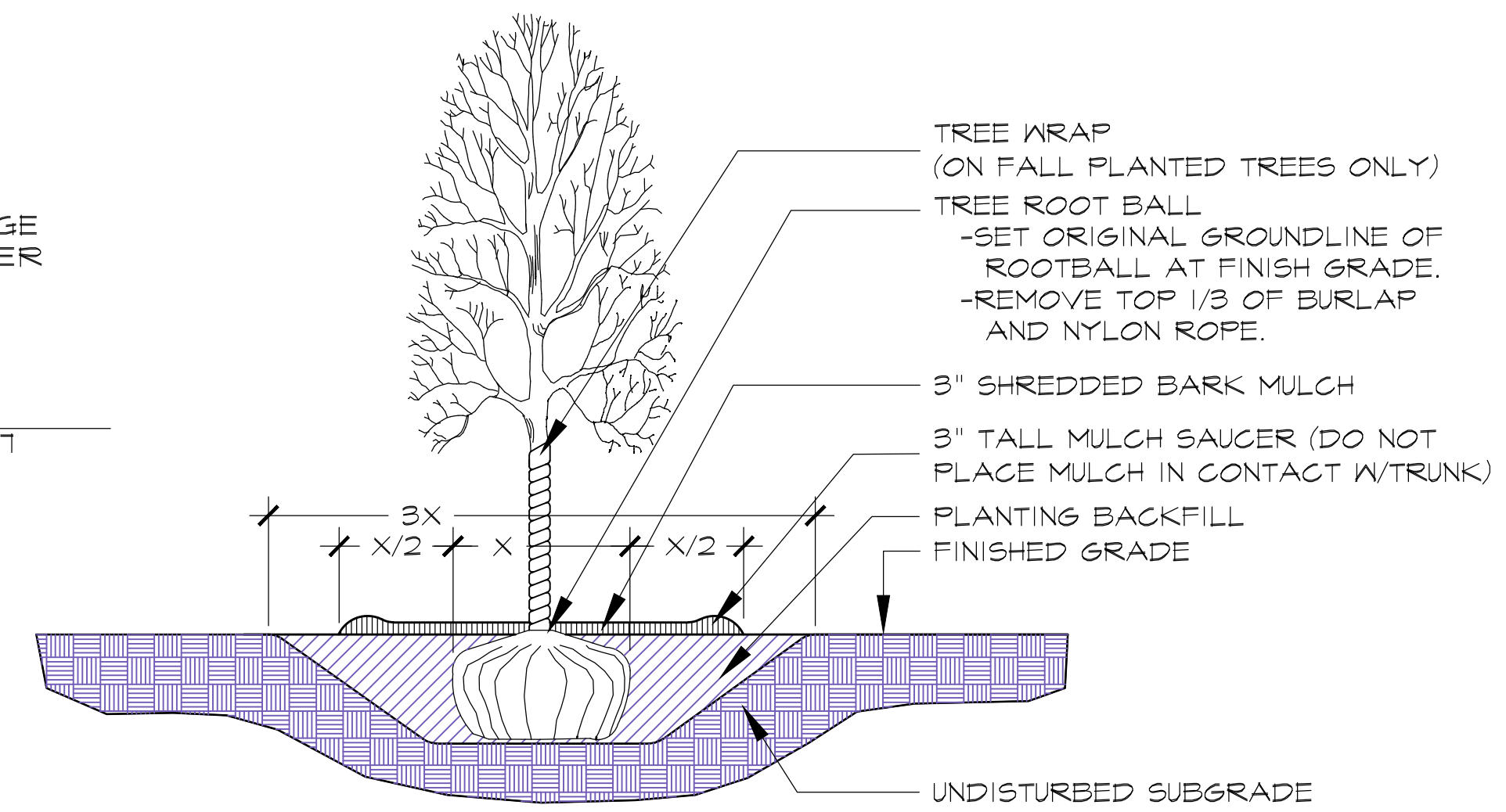
Jeffrey J Bulin Lic. No. 157-000241 Exp. 8/31/2017



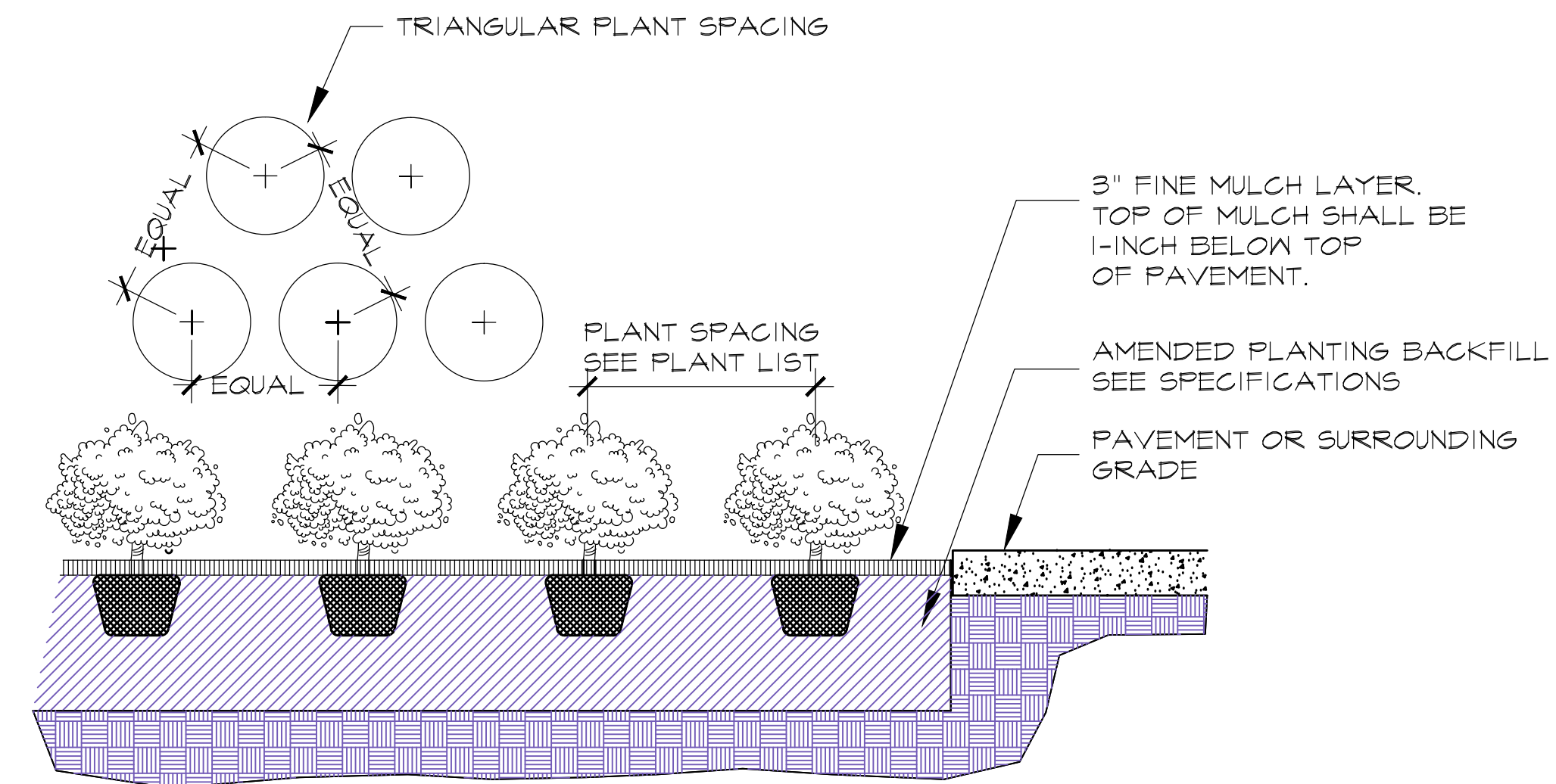
4 ISLAND PLANTING DETAIL No Scale

PLANT IDENTIFICATION

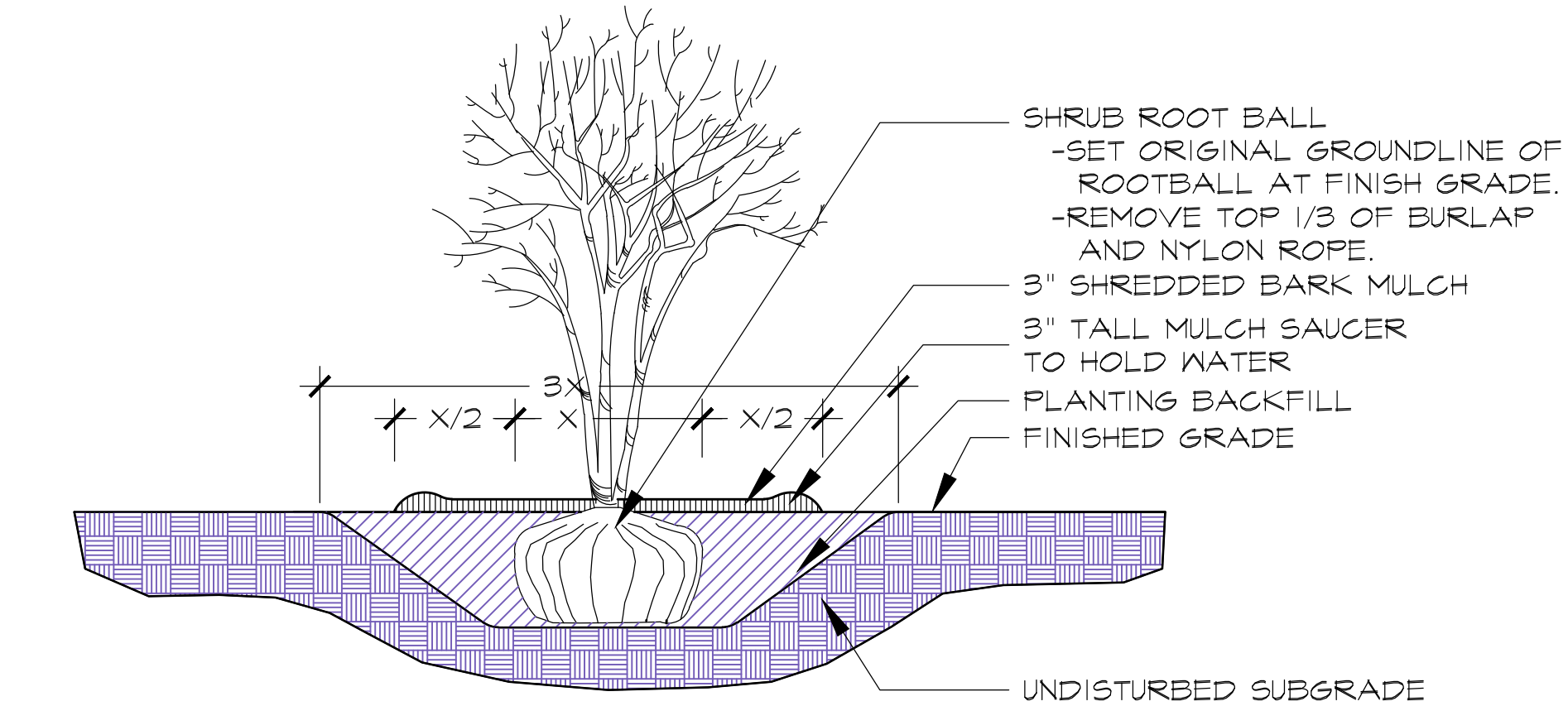
| Key | Botanical name | Common name | Qty | Size | Notes |
|--------------------------------|---|-----------------------------------|-----|------------------------------|-------|
| SHADE AND PARKWAY TREES | | | | | |
| GT | <i>Gleditsia triacanthos inermis</i> | Skyline Honeylocust | x | 2-1/2" cal. B&B - | |
| CO | <i>Celtis occidentalis 'Windy City'</i> | Windy City Hackberry | x | 2-1/2" cal. B&B - (2)@4" cal | |
| PC | <i>Pyrus calleryana 'Autumn Blaze'</i> | Flowering Pear | x | 2-1/2" cal. B&B - (2)@4" cal | |
| AH | <i>Aesculus hippocastanum 'baumanni'</i> | Horsechestnut | x | 2-1/2" cal. B&B - | |
| GD | <i>Gymnocladus dioica</i> | Kentucky Coffeetree | x | 2-1/2" cal. B&B - | |
| PA | <i>Picea abies</i> | Norway Spruce | x | 8'-10" Ht. B&B - | |
| PN | <i>Pinus nigra</i> | Austrian Pine | x | 8'-10" Ht. B&B - | |
| PP | <i>Picea pungens 'Glauca'</i> | Blue Spruce | x | 6'-8" Ht. B&B - | |
| AR | <i>Acer freemanii 'Jeffers Red'</i> | Autumn Blaze Maple | x | 2-1/2" cal. B&B - | |
| ORNAMENTAL TREES | | | | | |
| CC | <i>Cercis canadensis</i> | Eastern Redbud | x | 6-8' B&B - | |
| AC | <i>Amelanchier canadensis</i> | Shadblow Serviceberry | x | 4' B&B - clump | |
| MR | <i>Malus 'Spring Snow'</i> | Flowering Crab Apple | x | 1-1/2" cal. B&B - | |
| SHRUBS | | | | | |
| IG | <i>Ilex glabra 'compacta'</i> | Compact Inkberry Holly | x | 24"Ht. 5 gal - 36" oc | |
| SP | <i>Syringa patula 'Miss Kim'</i> | Miss Kim Dwarf Lilac | x | 24"Ht. 5 gal - 36" oc | |
| VT | <i>Viburnum trilobum 'Compactum'</i> | Compact American Cranberry | x | 30"Ht. 5 gal - 36" oc | |
| CS | <i>Cornus stolonifera 'Bailey'</i> | Red Osier Dogwood | x | 36"Ht. B&B - 36" oc | |
| JC | <i>Juniperus chinensis 'Sea Green'</i> | Spreading Juniper | x | 24"Ht. 3 gal - 36" oc | |
| TM | <i>Taxus x media</i> | Spreading Yew | x | 30"Ht. 5 gal - 36" oc | |
| BUM | <i>Buxus microphylla 'Wilson'</i> | Northern Charm Boxwood | x | 24"Ht. B&B - 30" oc | |
| AH | <i>Hydrangea arborescens 'Annabelle'</i> | Annabelle Hydrangea | x | 24"Ht. 3 gal - 30" oc | |
| JV | <i>Juniperus virginiana 'Blue Mountain'</i> | Blue Mountain Juniper | x | 42"Ht. 5 gal - 36" oc | |
| PERENNIALS AND GRASSES | | | | | |
| - | <i>Hosta 'August Moon'</i> | Hosta, mixed varieties allowed | - | 18"-24"Ht. 1 gal - 24" oc | |
| - | <i>Hemerocallis 'Chicago Knockout'</i> | Daylily, mixed varieties allowed | - | 18"-32"Ht. 1 gal - 18" oc | |
| - | <i>Rudbeckia speciosa</i> | Black-eyed Susan, mixed varieties | - | 18"-24"Ht. 1 gal - 18" oc | |
| SWN | <i>Salvia nemorosa</i> | May Night Salvia | - | 18"-24"Ht. 1 gal - 24" oc | |
| SC | <i>Schizachyrium scaparium</i> | Little Blue Stem | - | 18"-32"Ht. 1 gal - 32" oc | |
| CA | <i>Calamagrostis acutiflora</i> | Karl Foerster Feather Reed Grass | - | 18"-32"Ht. 1 gal - 32" oc | |
| GROUND COVER | | | | | |
| RA | <i>Rhus aromatica 'Gro-Low'</i> | Gro-Low Sumac | x | 18"Ht. 3 gal - 36" oc | |
| PG | <i>Polygonum cuspidatum 'compactum'</i> | Dwarf Fleeceflower | x | 9"Ht. 1 gal - 24" oc | |
| HH | <i>Hedra helix 'Thorndale'</i> | English Ivy | x | 6" 3" tray - 12" oc | |
| PATG | <i>Pachysandra terminalis</i> | Green Carpet Japanese Spurge | x | 6" 3" tray - 12" oc | |
| VINES | | | | | |
| PT | <i>Parthenocissus tricuspidata</i> | Boston Ivy | x | 18"Ht. 1 gal - 24" oc | |



1 SHADE TREE PLANTING DETAIL No Scale



2 GROUNDCOVER / PERENNIAL PLANTING DETAIL No Scale



3 SHRUB PLANTING DETAIL No Scale

PROJECT

Kensington School, New Construction

parking lot and landscape improvements
840 East Kensington Road
Arlington Heights, Illinois

Jeffrey J Bulin
landscape architect

BUHLWORK DESIGN GUILD
landscape architecture

320 Luthin Road
Oak Brook, Illinois 60523
tel: 630.325.5340
fax: 630.325.1041
mail@buhlwork.com

ARCHITECT

SEE SWORN STATEMENT THIS SHEET.

REVISIONS

7/18/2016 Issued for permit

TITLE

landscape sections, details and plant list

DATE 7/15/2016 NUMBER

DRAWN BY SCALE as noted

LA-2