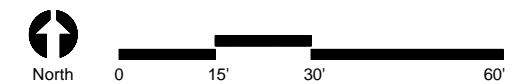


- Waiting/ Standing Areas - 349sf
- Seating Areas - 4,701sf
- Auditorium - 1,665sf
Fixed Seat Count (126)
- Business Area - 1099sf

Arlington Ale House

Arlington Heights, IL

Existing Conditions

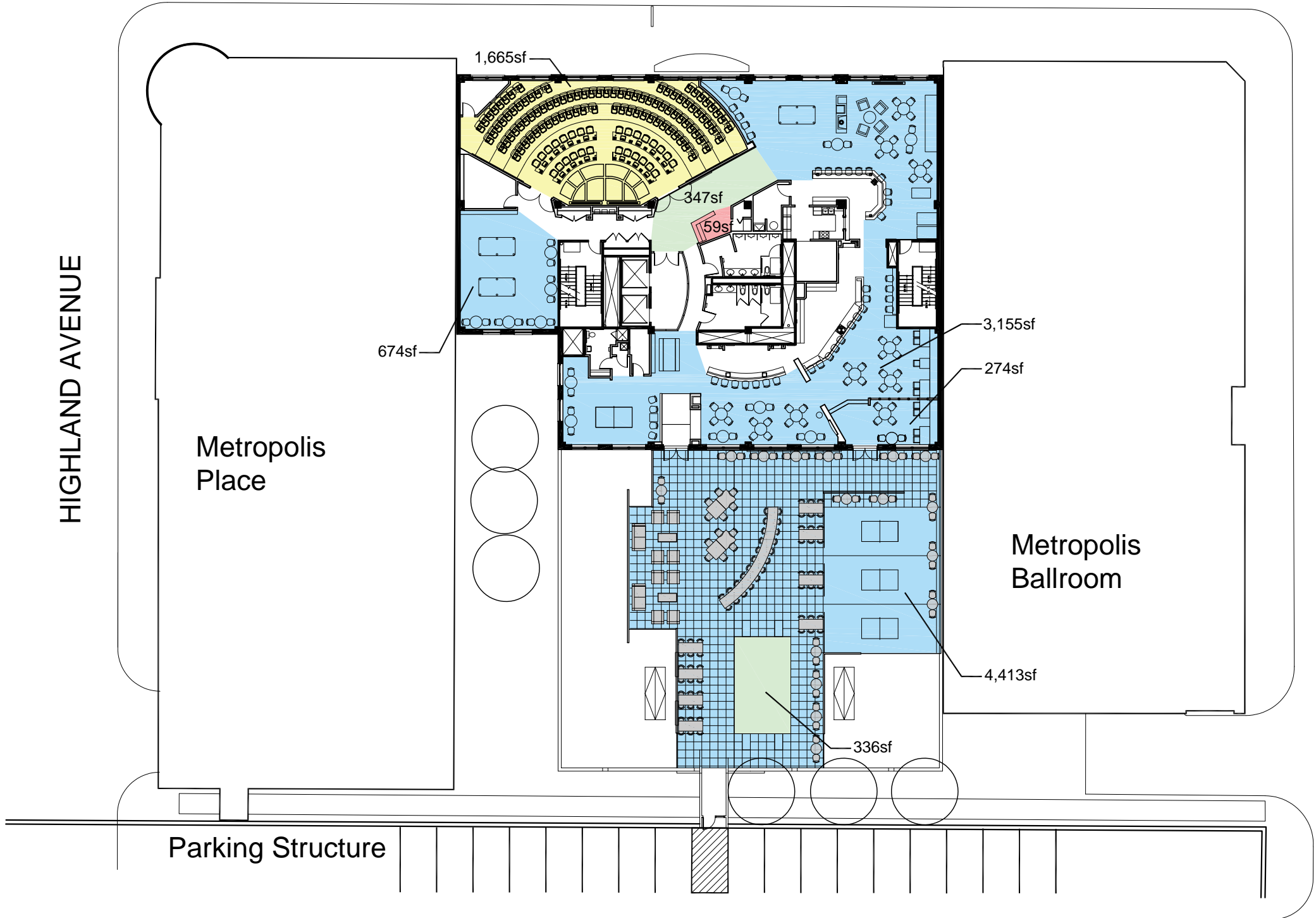


43 South Vail Avenue
Arlington Heights, Illinois 60005
Job No. 00000 © 2016



July 29, 2016 ARCHITECTS + PLANNERS, INC.

CAMPBELL STREET



- Waiting/ Standing Areas - 683sf
- Seating Areas - 8,516sf
- Auditorium - 1,665sf
Fixed Seat Count (126)
- Business Area - 59sf

Arlington Ale House

Proposed Modifications

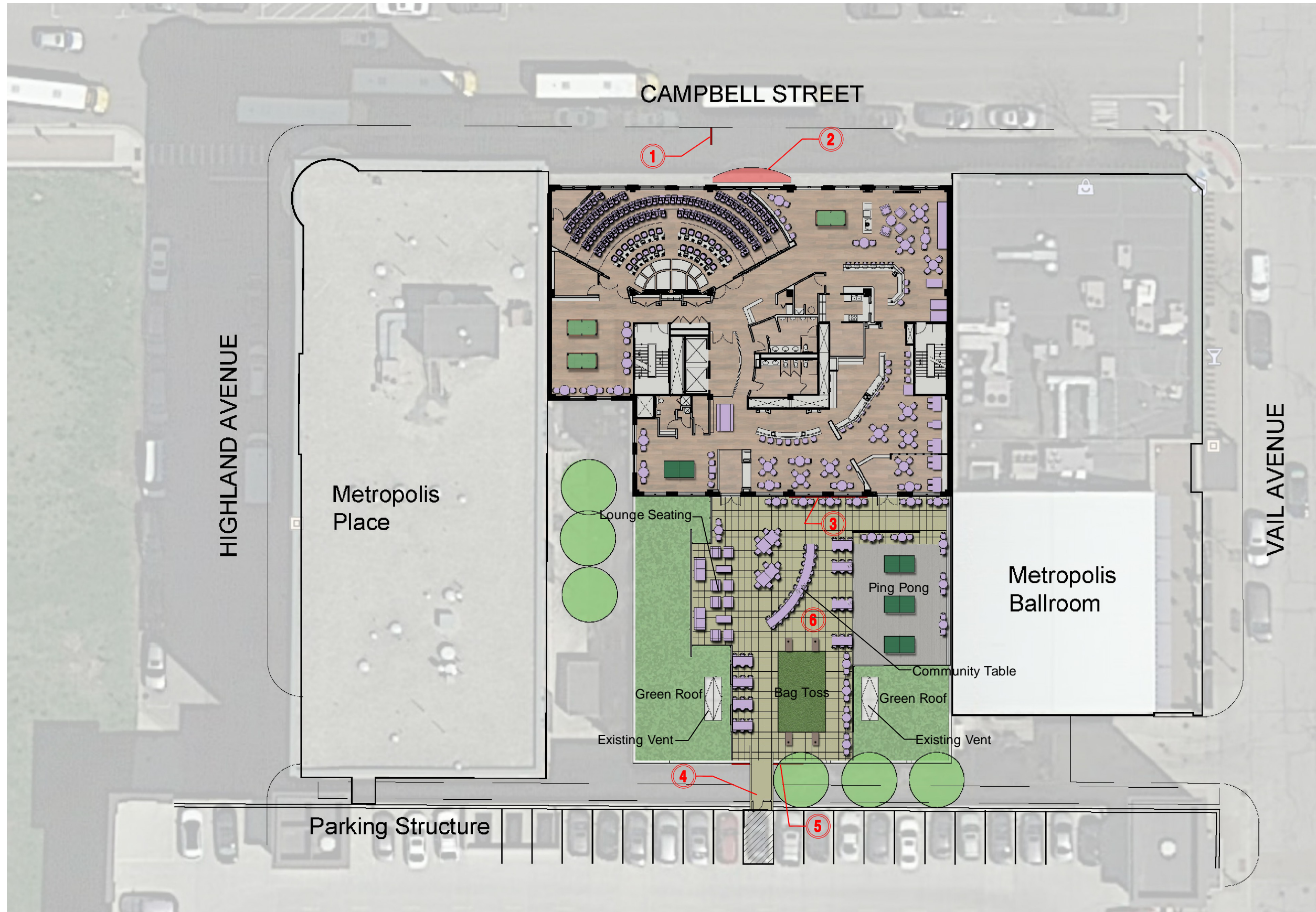
Arlington Heights, IL



43 South Vail Avenue
Arlington Heights, Illinois 60005
Job No. 00000 © 2016



July 29, 2016 ARCHITECTS + PLANNERS, INC.



- ① Ground Sign
- ② Illuminated Crown Sign
- ③ Illuminated Spandrel Sign
- ④ Access Bridge
- ⑤ Illuminated Wall Panel w/ Sign
- ⑥ Expanded Roof Deck

Arlington Ale House
Arlington Heights, IL

Proposed Modifications
Illustrative Plan

