

PLANT SCHEDULE BASE BID				
CANOPY TREES	BOTANICAL NAME / COMMON NAME	COND	SIZE	QTY
CEL OCC	CELSTIS OCCIDENTALIS / COMMON HACKBERRY	B & B	4" CAL	3
TIL GRE	TILIA CORDATA 'GREENSPIRE' / GREENSPIRE LITTLELEAF LINDEN	B & B	4" CAL	4
ULM REG	ULMUS X 'REGAL' / ELM	B & B	4" CAL	3
UNDERSTORY TREES	BOTANICAL NAME / COMMON NAME	COND	SIZE	QTY
SYR IVO	SYRINGA RETICULATA 'IVORY SILK' / IVORY SILK JAPANESE TREE LILAC	B & B	8" MULTI-TRUNK	1
DECIDUOUS SHRUBS	BOTANICAL NAME / COMMON NAME	COND	SIZE	QTY
BAP AUS	BAPTISIA AUSTRALIS / BLUE WILD INDIGO	5 GAL	24" HT.	10
COT ACU	COTONEASTER ACUTIFOLIUS / PEKING COTONEASTER	B & B	36" HT.	14
ROS FL4	ROSA X 'FLOWER CARPET PINK' / ROSE	5 GAL	24" SPREAD	13
SPI SPI	SPIRAEA JAPONICA 'LITTLE PRINCESS' / LITTLE PRINCESS JAPANESE SPIRAEA	B & B	24" HT.	4
SYR BL2	SYRINGA X 'BLOOMERANG' / BLOOMERANG LILAC	B & B	30" HT.	13
VIB LUS	VIBURNUM DENTATUM 'CHICAGO LUSTER' / CHICAGO LUSTER ARROWWOOD	B & B	36" HT.	13
EVERGREEN SHRUBS	BOTANICAL NAME / COMMON NAME	COND	SIZE	QTY
TAX DE4	TAXUS X MEDIA / DENSE YEW	B & B	24" HT.	5
GRASSES	BOTANICAL NAME / COMMON NAME	COND	SIZE	QTY
PAN NOR	PANICUM VIRGATUM 'NORTH WIND' / NORTHWIND SWITCH GRASS	CONT.	1 GAL.	11
GROUND COVERS	BOTANICAL NAME / COMMON NAME	COND	SIZE	QTY
HEM OR2	HEMEROCALLIS X 'STELLA DE ORO' / STELLA DE ORO DAYLILY	CONT.	#1	32
NEP WA2	NEPETA X FAASSWEN 'WALKERS LOW' / WALKERS LOW CATMINT	CONT.	#1	156
VIN DAR	VINCA MINOR 'DART'S BLUE' / DART'S BLUE PERIWINKLE	3" POT	6"-12" HT.	71

- LANDSCAPE NOTES:**
- PLANT QUALITIES SHOWN IN THE PLANT SCHEDULE ARE FOR CONVENIENCE ONLY. THE CONTRACTOR IS RESPONSIBLE FOR PROVIDING AND INSTALLING ALL MATERIALS SHOWN ON THE PLAN AND SHOULD NOT RELY ON THE PLANT SCHEDULE FOR DETERMINING QUALITIES.
 - ALL PLANT MATERIALS SHALL BE NURSERY GROWN STOCK AND SHALL BE FREE FROM ANY DEFORMITIES, DISEASES OR INSECT DAMAGE. ANY MATERIALS WITH DAMAGED OR CROOKED/DISFIGURED LEADERS, BARK ABRASION, SUNSCALD, INSECT DAMAGE, ETC. ARE NOT ACCEPTABLE AND WILL BE REJECTED. TREES WITH MULTIPLE LEADERS WILL BE REJECTED UNLESS CALLED OUT IN THE PLANT SCHEDULE AS MULTI-STEM.
 - ALL LANDSCAPE IMPROVEMENTS SHALL MEET MUNICIPALITY REQUIREMENTS AND GUIDELINES, WHICH SHALL BE VERIFIED BY MUNICIPAL AUTHORITIES.
 - ALL PLANTING OPERATIONS SHALL BE COMPLETED IN ACCORDANCE WITH STANDARD HORTICULTURAL PRACTICES. THIS MAY INCLUDE, BUT NOT BE LIMITED TO, PROPER PLANTING BED AND TREE PIT PREPARATION, PLANTING MIX, PRUNING, STAKING AND GUYING, WRAPPING, SPRAYING, FERTILIZATION, PLANTING AND ADEQUATE MAINTENANCE OF MATERIALS DURING CONSTRUCTION ACTIVITIES.
 - ALL PLANT MATERIALS SHALL BE INSPECTED AND APPROVED BY THE LANDSCAPE ARCHITECT PRIOR TO INSTALLATION. ANY MATERIALS INSTALLED WITHOUT APPROVAL MAY BE REJECTED.
 - THE CONTRACTOR SHALL GUARANTEE PLANT MATERIALS FOR A PERIOD OF ONE YEAR FROM DATE OF ACCEPTANCE BY OWNER. THE CONTRACTOR SHALL OUTLINE PROPER MAINTENANCE PROCEDURES TO THE OWNER AT THE TIME OF ACCEPTANCE. DURING THE GUARANTEE PERIOD, DEAD OR DISEASED MATERIALS SHALL BE REPLACED AT NO COST TO THE OWNER. AT THE END OF THE GUARANTEE PERIOD THE CONTRACTOR SHALL OBTAIN FINAL ACCEPTANCE FROM THE OWNER.
 - ANY EXISTING TREES TO BE RETAINED SHALL BE PROTECTED FROM SOIL COMPACTION AND OTHER DAMAGES THAT MAY OCCUR DURING CONSTRUCTION ACTIVITIES BY ERECTING FENCING AROUND SUCH MATERIALS AT A DISTANCE OF 8.5' FROM THE TRUNK.
 - ALL GRASS, CLUMPS, OTHER VEGETATION, DEBRIS, STONES, ETC. SHALL BE RAKED OR OTHERWISE REMOVED FROM PLANTING AND LAWN AREAS PRIOR TO INITIATION OF INSTALLATION PROCEDURES.
 - ANY AREAS TO BE LOAMED AND SEEDING WHICH HAVE NOT BEEN DISTURBED BY CONSTRUCTION ACTIVITIES SHALL RECEIVE 1"-2" OF LOAM OVER SCARIFIED EXISTING SOILS. CARE SHOULD BE GIVEN TO NOT PLACE GREATER THAN 1" SOIL OVER EXPOSED ROOTS OF EXISTING TREES IN SUCH AREAS.
 - THE CONTRACTOR SHALL VERIFY THE LOCATIONS OF ALL UNDERGROUND UTILITIES PRIOR TO INITIATING PLANTING OPERATIONS. THE CONTRACTOR SHALL REPAIR/ REPLACE AND UTILITY, PAVING, CURBING, ETC. WHICH IS DAMAGED DURING PLANTING OPERATIONS.
 - SIZE AND GRADING STANDARDS OF PLANT MATERIALS SHALL CONFORM TO THE LATEST EDITION OF ANSI Z60.1, AMERICAN STANDARDS FOR NURSERY STOCK, BY THE AMERICAN NURSERY & LANDSCAPE ASSOCIATION.
 - REFER TO PLAT OF SURVEY FOR LEGAL DESCRIPTION, BOUNDARY DIMENSIONS AND EXISTING CONDITIONS.
 - ALL PLANT MATERIAL ON THIS PLANTING PLAN REPRESENTS THE INTENTION AND INTENSITY OF THE PROPOSED LANDSCAPE MATERIAL. THE EXACT SPECIES AND LOCATIONS MAY VARY IN THE FIELD DO TO MODIFICATIONS IN THE SITE IMPROVEMENTS AND THE AVAILABILITY OF PLANT MATERIAL AT THE TIME OF INSTALLATION. ANY SUCH CHANGES MUST FIRST BE APPROVED BY THE VILLAGE IN WRITING.
 - ALL PLANT MATERIAL SHALL BE PLANTED WITH A MINIMUM OF SIX INCHES OF ORGANIC SOIL AND MULCHED WITH A SHREDDED BARK MATERIAL TO A MINIMUM 3" DEPTH.
 - ALL BEDS SHALL BE EDGED, HAVE WEED PREEMERGENTS APPLIED AT THE RECOMMENDED RATE.
 - ALL PARKWAYS AND PARKING LOT ISLANDS SHALL HAVE LAWN AS A GROUND COVER, UNLESS OTHERWISE NOTED.
 - ALL LAWN AREAS ON THIS PLAN SHALL BE GRADED SMOOTH AND TOPPED WITH AT LEAST 4" OF TOPSOIL. ALL LAWN AREAS TO BE ESTABLISHED USING SEED UNLESS OTHERWISE NOTED.
 - THIS LANDSCAPE PLAN ASSUMES THE SITE WILL BE PREPARED WITH TOP SOIL SUITABLE FOR THE ESTABLISHMENT OF THE LANDSCAPE MATERIAL PRESENTED ON THIS PLAN. IF ADDITIONAL TOP SOIL IS REQUIRED IT IS UP TO THE LANDSCAPE CONTRACTOR ON THE PROJECT TO PROVIDE, SPREAD AND PREPARE THE SITE AS NEEDED FOR THE IMPLEMENTATION OF THIS LANDSCAPE PLAN.
 - CONTRACTORS MUST VERIFY ALL QUANTITIES AND OBTAIN ALL PROPER PERMITS AND LICENSES FROM THE PROPER AUTHORITIES.
 - ALL MATERIAL MUST MEET INDUSTRY STANDARDS AND THE LANDSCAPE ARCHITECT HAS THE RIGHT TO REFUSE ANY POOR MATERIAL OR WORKMANSHIP.
 - LANDSCAPE ARCHITECT IS NOT RESPONSIBLE FOR UNSEEN SITE CONDITIONS.
 - ALL PLANTINGS SHALL BE SPACED EQUAL DISTANT, BACK FILLED WITH AMENDED SOIL IN A HOLE TWICE THE ROOTBALL DIAMETER, WATERED, FERTILIZED, PRUNED, AND HAVE ALL TAGS AND ROPES REMOVED.
 - TREES SHALL BE STAKED AND GUYED, AND HAVE A WATERING SAUCER AT BASE.
 - ALL BEDS TO BE BERMED 12" TO 24" ABOVE GRADE AND MEET DRAINAGE REQUIREMENTS.
 - LAWN AND BED AREAS SHALL BE ROTOTILLED, RAKED OF CLUMPS AND DEBRIS.
 - REMOVE ALL DEAD AND DISEASED PLANT MATERIAL FROM SITE AND DISPOSE OF PROPERLY.
 - PRUNE AND FERTILIZE ALL EXISTING VEGETATION TO REMAIN ON SITE.

NATIVE PLANTING AND LAWN BASE BID		
	NATIVE PLANT GARDEN	710 SF
	LAWN (SOD)	107,436 SF
	ARTIFICIAL TURF	4,733 SF

SURVEY PROVIDED BY:

Plat of Survey and Topography Provided By R.E. Allen and Associates, Ltd. For Eriksson Engineering Associates on July 2, 2015. Order Number F5215.

PROJECT BENCHMARKS

SITE BENCHMARK:
CUT "X" CROSS ON CONCRETE SIDEWALK AT THE NORTHEAST CORNER OF PARCEL
NAVD88 ELEVATION = 697.05

J.U.L.I.E.

Note: The exact location of all utilities shall be verified by the contractor prior to construction activities. For utility locations call: J.U.L.I.E. 1 (800) 892-0123

ERIKSSON ENGINEERING ASSOCIATES, LTD.
145 COMMERCE DRIVE, SUITE A
GRAYSLAKE, ILLINOIS 60030
PHONE (847) 223-4804
FAX (847) 223-4864
EMAIL INFO@EEA-LTD.COM
PROFESSIONAL DESIGN FIRM
LICENSE NO. 184-003220
EXPIRES: 04/30/2017

**THOMAS MIDDLE SCHOOL
ADDITION AND RENOVATIONS**
1430 N. Belmont Avenue
Arlington Heights, Illinois

Reserved for Seal:

Expiration Date: _____

No.	Date	Description
	9/26/16	Issue For Bid & Permit
2	10/06/16	Addendum 2

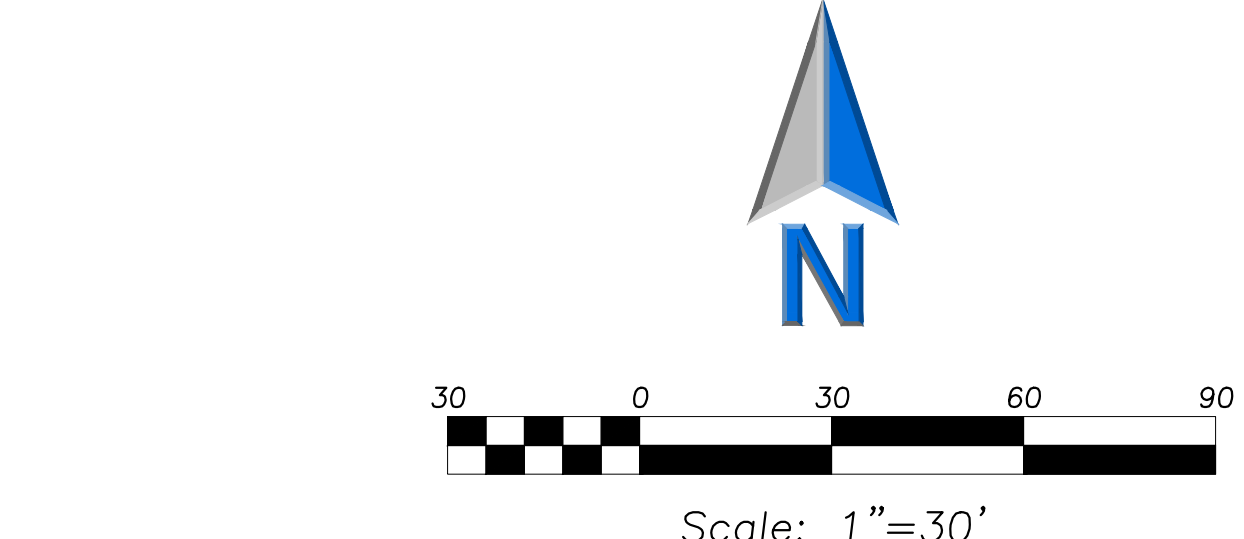
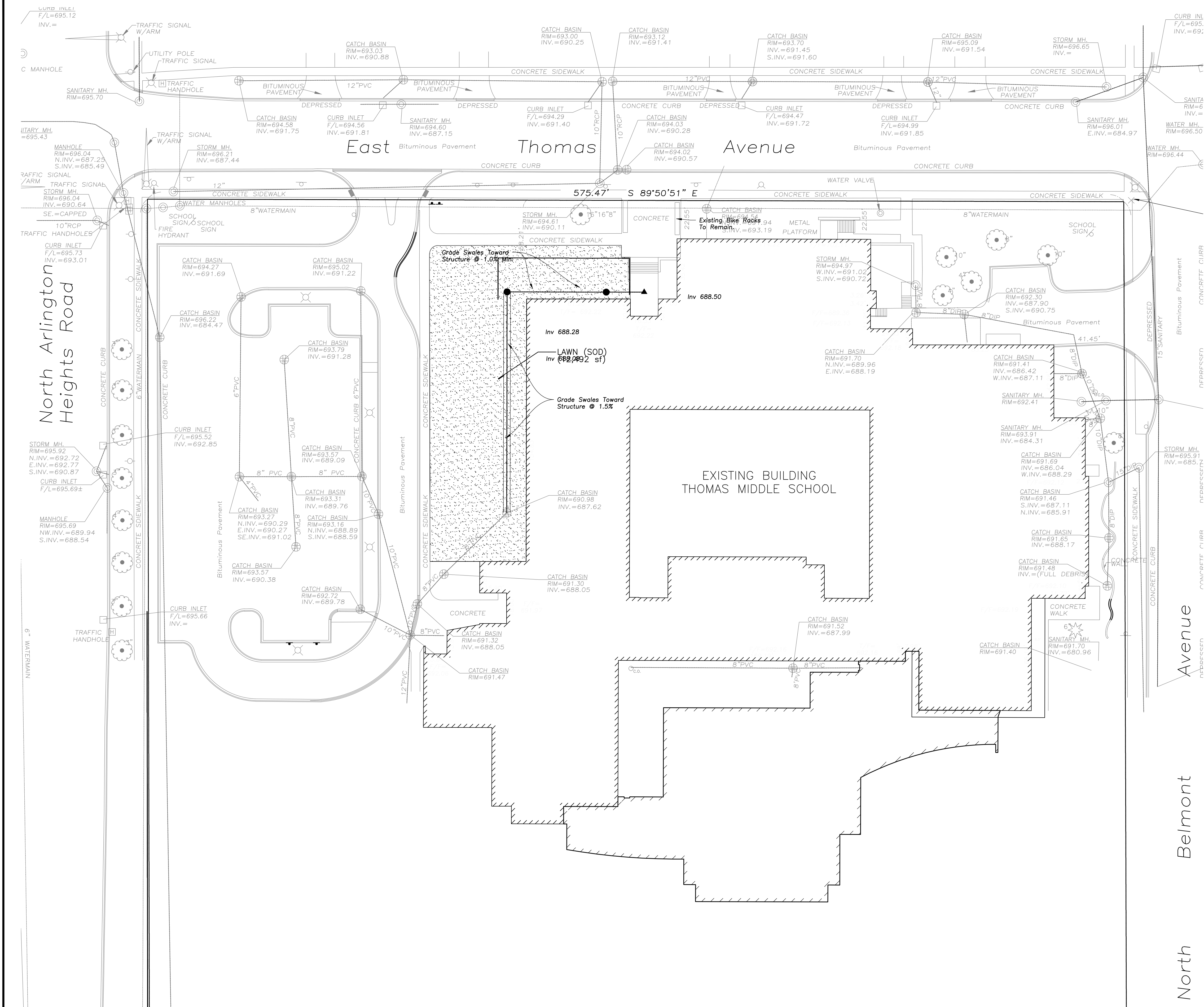
Design By: SG		Date: 07/25/16
Approved By: KC		Project No.

Sheet Title:

LANDSCAPE PLAN

Sheet No:

L1.1



- LANDSCAPE NOTES:**
1. PLANT QUALITIES SHOWN IN THE PLANT SCHEDULE ARE FOR CONVENIENCE ONLY. THE CONTRACTOR IS RESPONSIBLE FOR PROVIDING AND INSTALLING ALL MATERIALS SHOWN ON THE PLAN AND SHOULD NOT RELY ON THE PLANT SCHEDULE FOR DETERMINING QUALITIES.
 2. ALL PLANT MATERIALS SHALL BE NURSERY GROWN STOCK AND SHALL BE FREE FROM ANY DEFORMITIES, DISEASES OR INSECT DAMAGE. ANY MATERIALS WITH DAMAGED OR CROOKED/DISFIGURED LEADERS, BARK ABRASION, SUNSCALD, INSECT DAMAGE, ETC. ARE NOT ACCEPTABLE AND WILL BE REJECTED. TREES WITH MULTIPLE LEADERS WILL BE REJECTED UNLESS CALLED OUT IN THE PLANT SCHEDULE AS MULTI-STEM.
 3. ALL LANDSCAPE IMPROVEMENTS SHALL MEET MUNICIPALITY REQUIREMENTS AND GUIDELINES, WHICH SHALL BE VERIFIED BY MUNICIPAL AUTHORITIES.
 4. ALL PLANTING OPERATIONS SHALL BE COMPLETED IN ACCORDANCE WITH STANDARD HORTICULTURAL PRACTICES. THIS MAY INCLUDE, BUT NOT BE LIMITED TO, PROPER PLANTING BED AND TREE PIT PREPARATION, PLANTING MIX, PRUNING, STAKING AND GUYING, WRAPPING, SPRAYING, FERTILIZATION, PLANTING AND ADEQUATE MAINTENANCE OF MATERIALS DURING CONSTRUCTION ACTIVITIES.
 5. ALL PLANT MATERIALS SHALL BE INSPECTED AND APPROVED BY THE LANDSCAPE ARCHITECT PRIOR TO INSTALLATION. ANY MATERIALS INSTALLED WITHOUT APPROVAL MAY BE REJECTED.
 6. THE CONTRACTOR SHALL GUARANTEE PLANT MATERIALS FOR A PERIOD OF ONE YEAR FROM DATE OF ACCEPTANCE BY OWNER. THE CONTRACTOR SHALL OUTLINE PROPER MAINTENANCE PROCEDURES TO THE OWNER AT THE TIME OF ACCEPTANCE. DURING THE GUARANTEE PERIOD, DEAD OR DISEASED MATERIALS SHALL BE REPLACED AT NO COST TO THE OWNER. AT THE END OF THE GUARANTEE PERIOD THE CONTRACTOR SHALL OBTAIN FINAL ACCEPTANCE FROM THE OWNER.
 7. ANY EXISTING TREES TO BE RETAINED SHALL BE PROTECTED FROM SOIL COMPACTION AND OTHER DAMAGES THAT MAY OCCUR DURING CONSTRUCTION ACTIVITIES BY ERECTING FENCING AROUND SUCH MATERIALS AT A DISTANCE OF 8.5' FROM THE TRUNK.
 8. ALL GRASS, CLUMPS, OTHER VEGETATION, DEBRIS, STONES, ETC., SHALL BE RAKED OR OTHERWISE REMOVED FROM PLANTING AND LAWN AREAS PRIOR TO INITIATION OF INSTALLATION PROCEDURES.
 9. ANY AREAS TO BE LOAMED AND SEEDED WHICH HAVE NOT BEEN DISTURBED BY CONSTRUCTION ACTIVITIES SHALL RECEIVE 1"-2" OF LOAM OVER SCARIFIED EXISTING SOILS. CARE SHOULD BE GIVEN TO NOT PLACE GREATER THEN 1" SOIL OVER EXPOSED ROOTS OF EXISTING TREES IN SUCH AREAS.
 10. THE CONTRACTOR SHALL VERIFY THE LOCATIONS OF ALL UNDERGROUND UTILITIES PRIOR TO INITIATING PLANTING OPERATIONS. THE CONTRACTOR SHALL REPAIR/ REPLACE AND UTILITY, PAVING, CURBING, ETC., WHICH IS DAMAGED DURING PLANTING OPERATIONS.
 11. SIZE AND GRADING STANDARDS OF PLANT MATERIALS SHALL CONFORM TO THE LATEST EDITION OF ANSI Z60.1, AMERICAN STANDARDS FOR NURSERY STOCK, BY THE AMERICAN NURSERY & LANDSCAPE ASSOCIATION.
 12. REFER TO PLAT OF SURVEY FOR LEGAL DESCRIPTION, BOUNDARY DIMENSIONS AND EXISTING CONDITIONS.
 13. ALL PLANT MATERIAL ON THIS PLANTING PLAN REPRESENTS THE INTENTION AND INTENSITY OF THE PROPOSED LANDSCAPE MATERIAL. THE EXACT SPECIES AND LOCATIONS MAY VARY IN THE FIELD DO TO MODIFICATIONS IN THE SITE. IMPROVEMENTS AND THE AVAILABILITY OF PLANT MATERIAL AT THE TIME OF INSTALLATION. ANY SUCH CHANGES MUST FIRST BE APPROVED BY THE VILLAGE IN WRITING.
 14. ALL PLANT MATERIAL SHALL BE PLANTED WITH A MINIMUM OF SIX INCHES OF ORGANIC SOIL AND MULCHED WITH A SHREDDED BARK MATERIAL TO A MINIMUM 3" DEPTH.
 15. ALL BEDS SHALL BE EDGED, HAVE WEED PREMERGENTS APPLIED AT THE RECOMMENDED RATE.
 16. ALL PARKWAYS AND PARKING LOT ISLANDS SHALL HAVE LAWN AS A GROUNDCOVER, UNLESS OTHERWISE NOTED.
 17. ALL LAWN AREAS ON THIS PLAN SHALL BE GRADED SMOOTH AND TOPPED WITH AT LEAST 4" OF TOPSOIL. ALL LAWN AREAS TO BE ESTABLISHED USING SEED UNLESS OTHERWISE NOTED.
 18. THIS LANDSCAPE PLAN ASSUMES THE SITE WILL BE PREPARED WITH TOP SOIL SUITABLE FOR THE ESTABLISHMENT OF THE LANDSCAPE MATERIAL PRESENTED ON THIS PLAN. IF ADDITIONAL TOP SOIL IS REQUIRED IT IS UP TO THE LANDSCAPE CONTRACTOR ON THE PROJECT TO PROVIDE, SPREAD AND PREPARE THE SITE AS NEEDED FOR THE IMPLEMENTATION OF THIS LANDSCAPE PLAN.
 19. CONTRACTORS MUST VERIFY ALL QUANTITIES AND OBTAIN ALL PROPER PERMITS AND LICENSES FROM THE PROPER AUTHORITIES.
 20. ALL MATERIAL MUST MEET INDUSTRY STANDARDS AND THE LANDSCAPE ARCHITECT HAS THE RIGHT TO REFUSE ANY POOR MATERIAL OR WORKMANSHIP.
 21. LANDSCAPE ARCHITECT IS NOT RESPONSIBLE FOR UNSEEN SITE CONDITIONS.
 22. ALL PLANTINGS SHALL BE SPACED EQUAL DISTANT, BACK FILLED WITH AMENDED SOIL IN A HOLE TWICE THE ROOTBALL DIAMETER, WATERED, PRUNED, AND HAVE ALL TAGS AND ROPES REMOVED.
 23. TREES SHALL BE STAKED AND GUYED, AND HAVE A WATERING SAUCER AT BASE.
 24. ALL BEDS TO BE BERMED 12" TO 24" ABOVE GRADE AND MEET DRAINAGE REQUIREMENTS.
 25. LAWN AND BED AREAS SHALL BE ROTOTILLED, RAKED OF CLUMPS AND DEBRIS.
 26. REMOVE ALL DEAD AND DISEASED PLANT MATERIAL FROM SITE AND DISPOSE OF PROPERLY.
 27. PRUNE AND FERTILIZE ALL EXISTING VEGETATION TO REMAIN ON SITE.

LAWN AREA (ALT 2)

	<u>LAWN (SOD)</u>	12,492 SF
--	-------------------	-----------

SURVEY PROVIDED BY:
Plat of Survey and Topography Provided By R.E. Allen and Associates, Ltd. For Eriksson Engineering Associates on July 2, 2015. Order Number F5215.

PROJECT BENCHMARKS

SITE BENCHMARK:
CUT "X" CROSS ON CONCRETE SIDEWALK AT THE NORTHEAST CORNER OF PARCEL
NAVD88 ELEVATION = 697.05

J.U.L.I.E.

Note: The exact location of all utilities shall be verified by the contractor prior to construction activities. For utility locations call: J.U.L.I.E. 1 (800) 892-0123

**ERIKSSON
ENGINEERING
ASSOCIATES, LTD.**

145 COMMERCE DRIVE, SUITE A
GRAYSLAKE, ILLINOIS 60030
PHONE (847) 223-4804 FAX (847) 223-4864
EMAIL INFO@EEA-LTD.COM
PROFESSIONAL DESIGN FIRM
LICENSE NO. 184-003220
EXPIRES: 04/30/2017

**THOMAS MIDDLE SCHOOL
ADDITION AND RENOVATIONS**

1430 N. Belmont Avenue
Arlington Heights, Illinois

Reserved for Seal:

Expiration Date: _____

No.	Date	Description
	9/26/16	Issue For Bid & Permit
	10/06/16	Addendum 2

© ERIKSSON ENGINEERING ASSOCIATES, LTD., 2015
THIS PLAN & DESIGN ARE THE PROPERTY OF ERIKSSON ENGINEERING ASSOCIATES, LTD.
NO REPRODUCTION OF ANY PART OF THESE PLANS IS PERMITTED WITHOUT THE WRITTEN
CONSENT OF ERIKSSON ENGINEERING ASSOCIATES, LTD.

Design By:	SG	Date:	07/25/16
Approved By:	KC	Project No.	

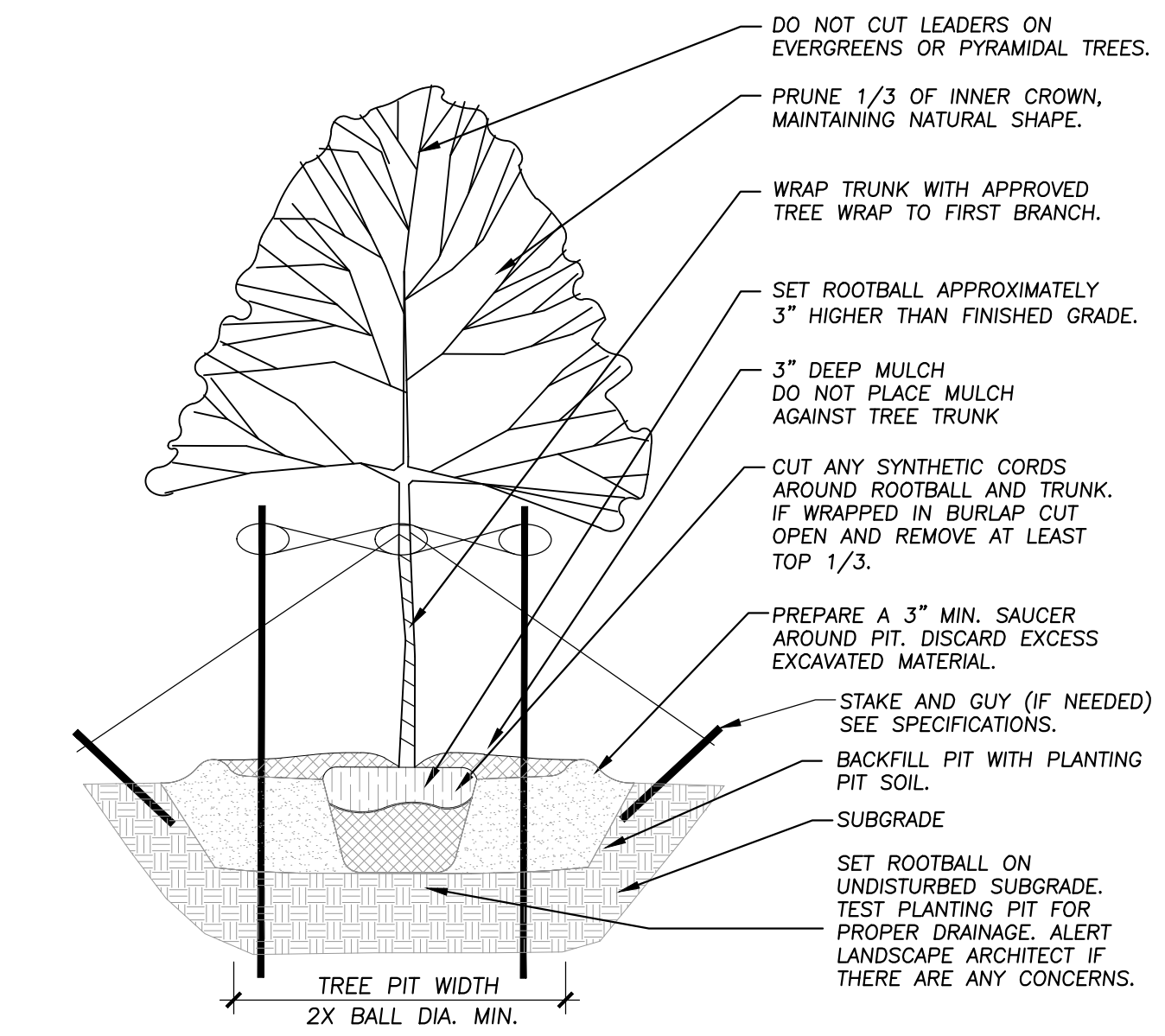
Sheet Title:

**LANDSCAPE
PLAN
Alternate 2**

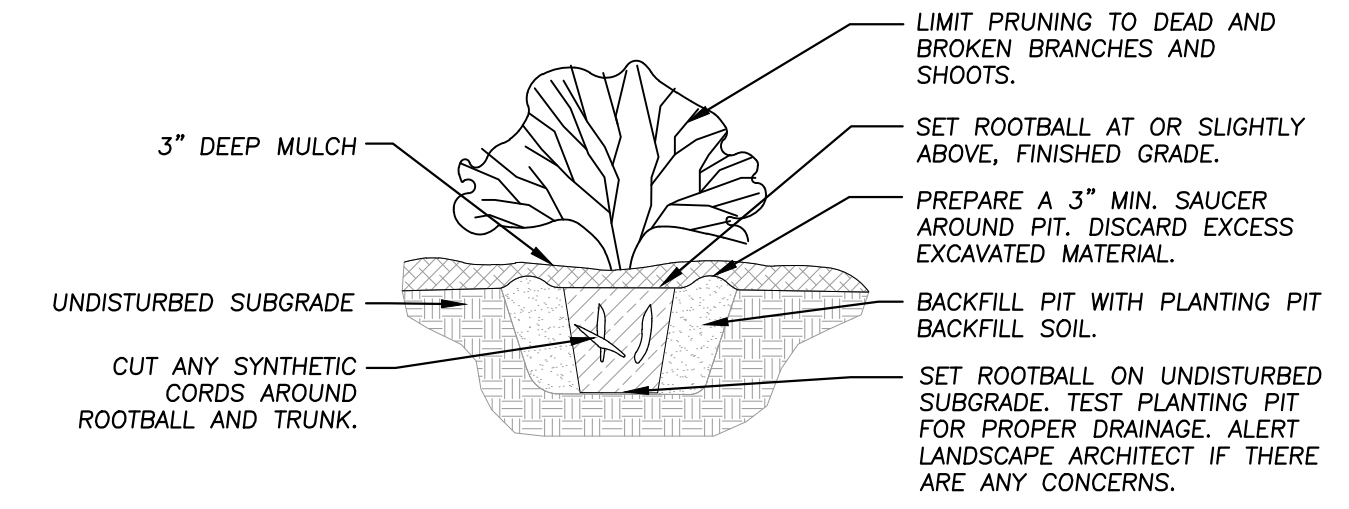
Sheet No:

L1.1a

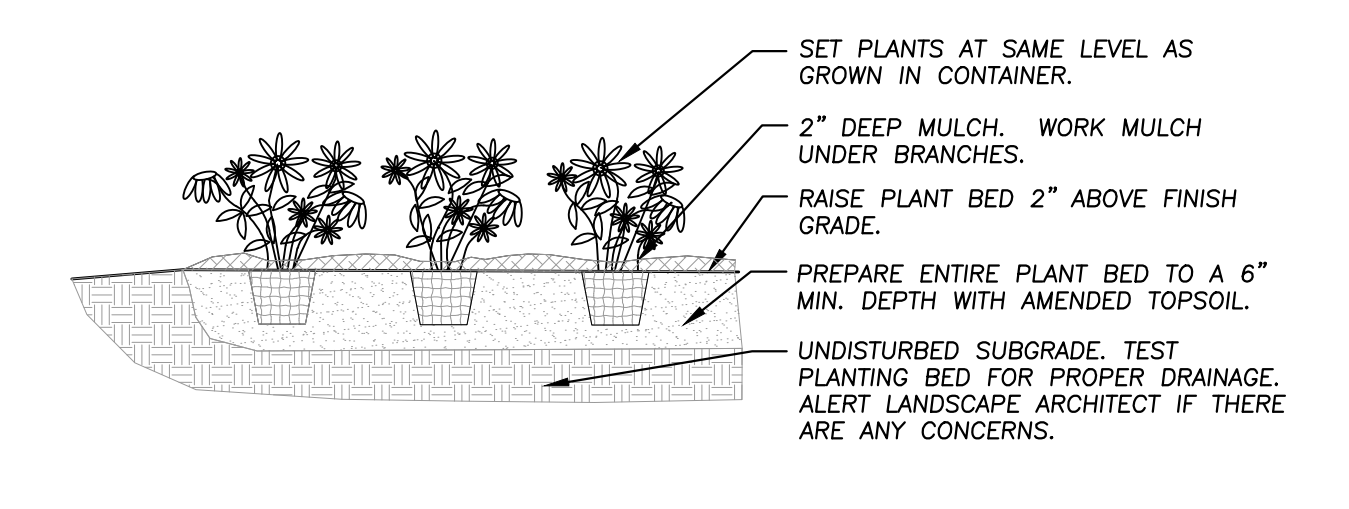
EEA - C:\PROJECTS\EEA\Arlington Heights\Thomas School\Lplan-Thomas MS_2016-10-5.dwg
Plotted: 10/06/16 @ 8:27am By: sgregory



1 TREE PLANTING DETAIL
NOT TO SCALE 32 9343-01



2 SHRUB PLANTING DETAIL
NOT TO SCALE 32 9333-01



3 ANNUAL, PERENNIAL, & GROUNDCOVER DETAIL
NOT TO SCALE 32 9301-03



ERIKSSON
ENGINEERING
ASSOCIATES, LTD.

145 COMMERCE DRIVE, SUITE A
GRAYSLAKE, ILLINOIS 60030
PHONE (847) 223-4804
FAX (847) 223-4864
EMAIL: INFO@EEA-LTD.COM
PROFESSIONAL DESIGN FIRM
LICENSE NO. 184-003220
EXPIRES: 04/30/2017

THOMAS MIDDLE SCHOOL
ADDITION AND RENOVATIONS
1430 N. Belmont Avenue
Arlington Heights, Illinois

Reserved for Seal:

Expiration Date: _____

No.	Date	Description
	9/26/16	Issue For Bid & Permit
	10/06/16	Addendum 2

© ERIKSSON ENGINEERING ASSOCIATES, LTD., 2015
THIS PLAN & DESIGN ARE THE PROPERTY OF ERIKSSON ENGINEERING ASSOCIATES, LTD.
NO REPRODUCTION OR PARTIAL USE OF THESE PLANS IS PERMITTED WITHOUT THE WRITTEN
CONSENT OF ERIKSSON ENGINEERING ASSOCIATES, LTD.

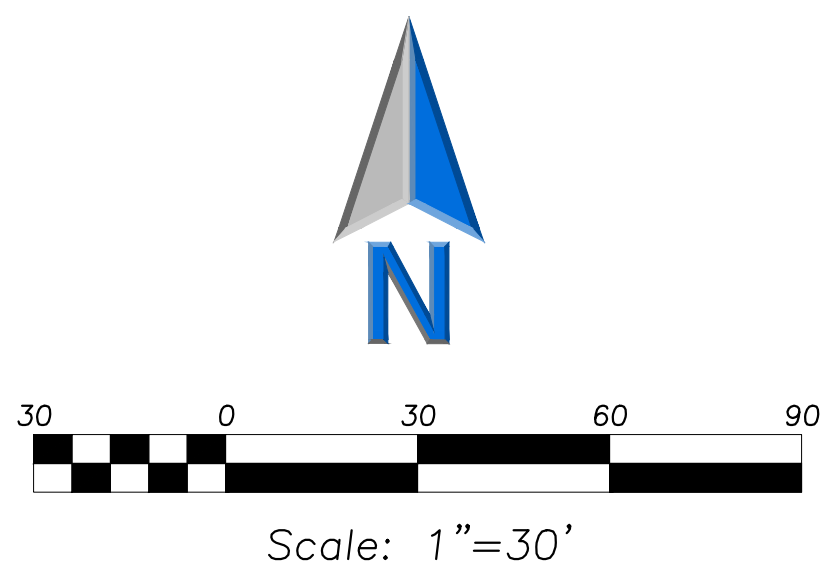
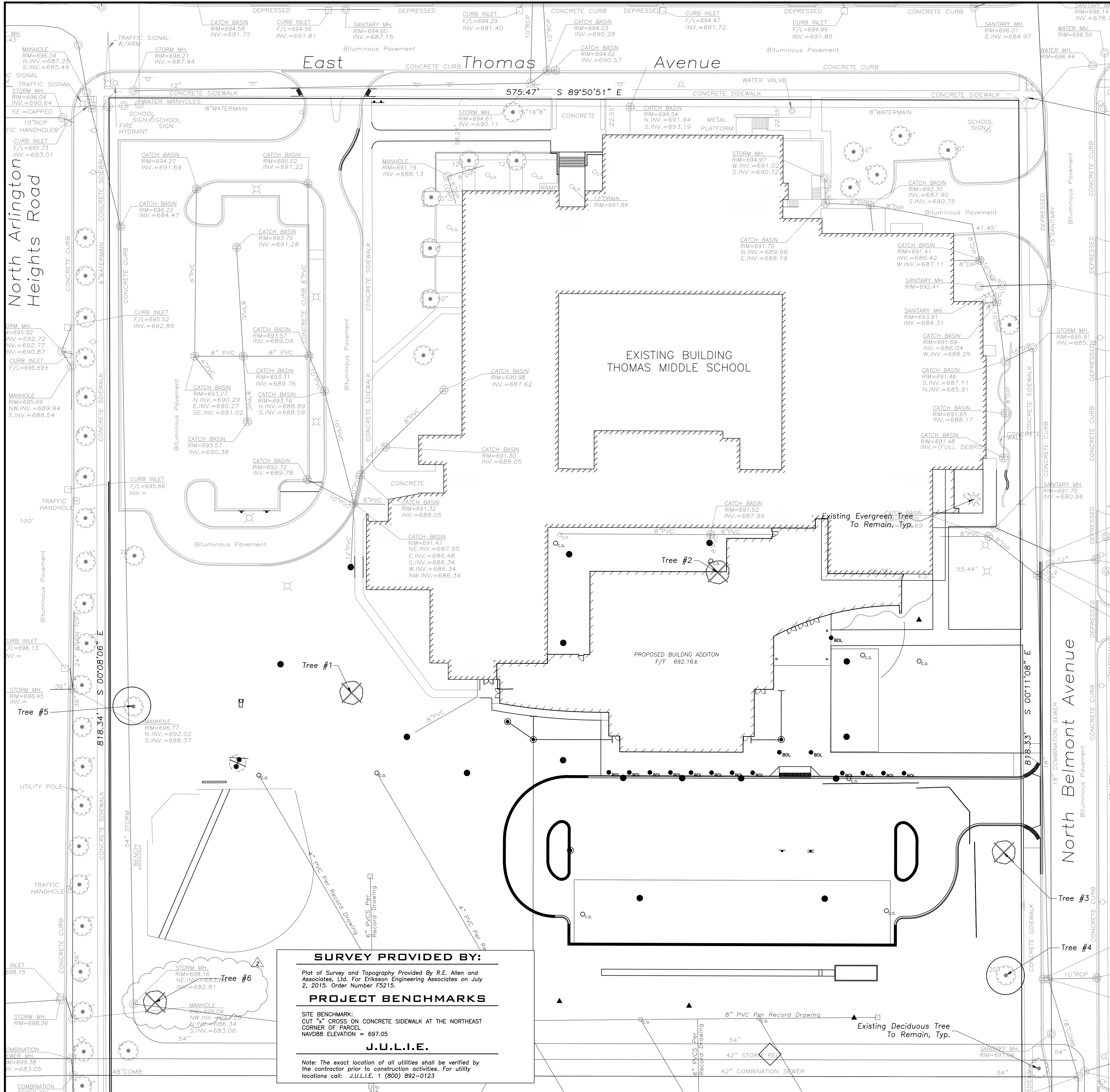
Design By:	SG	Date:	07/25/16
Approved By:	KC	Project No.	

Sheet Title:

LANDSCAPE
DETAILS

Sheet No:

L1.2

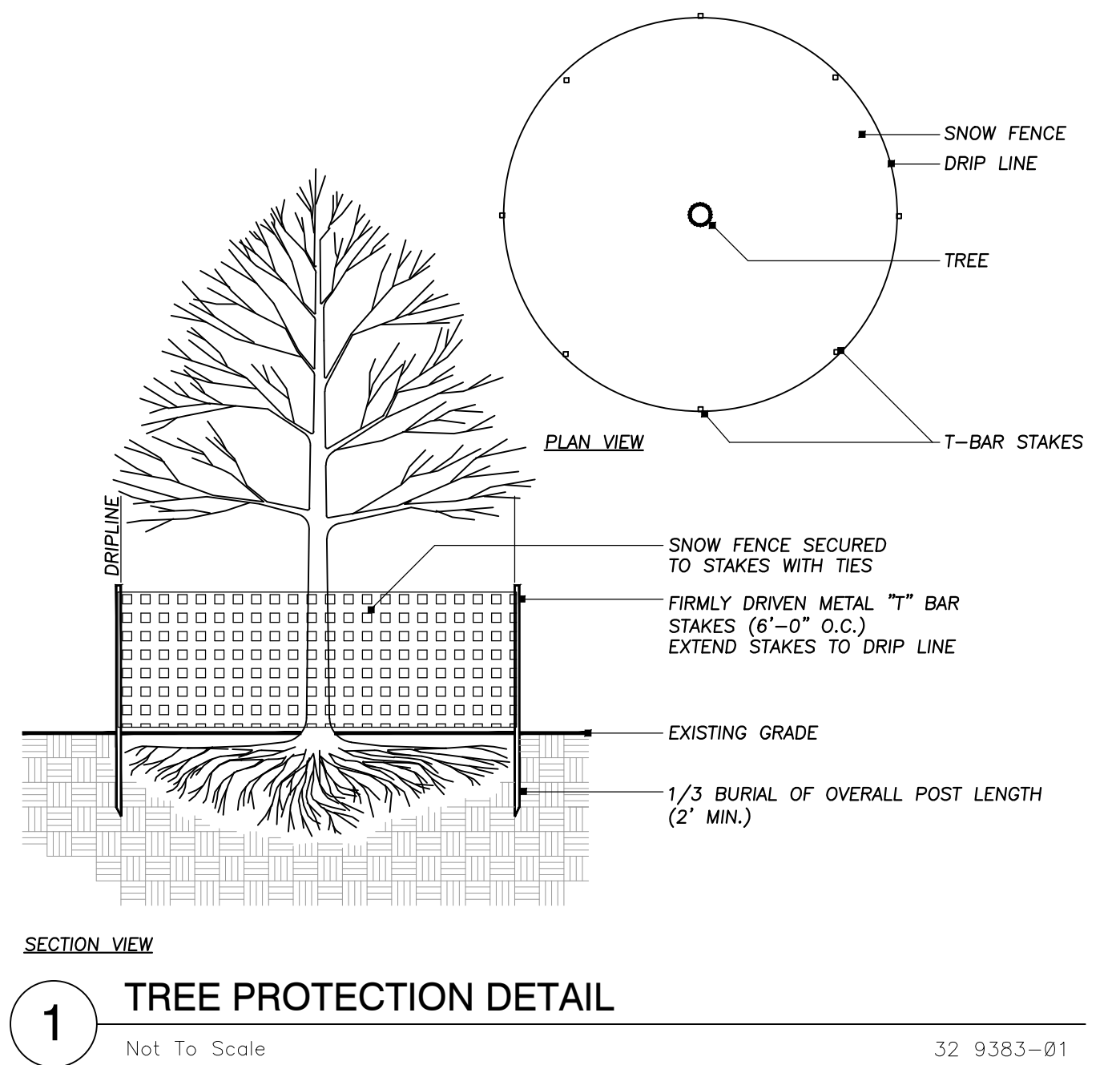


LEGEND	
EXISTING	PROPOSED

Existing Tree Survey Data:

Tree #	BOTANICAL NAME	COMMON NAME	TREE SIZE	CONDITION	COMMENTS
1	Pinus sylvestris	Scotch Pine	10' Cal.	Fair	
2	Acer platanoides	Norway Maple	4' Cal.	Good	
3	Acer platanoides	Norway Maple	12' Cal.	Good	
4	Acer platanoides	Norway Maple	20' Cal.	Good	
5	Acer platanoides	Norway Maple	18' Cal.	Good	
6	Acer platanoides	Norway Maple	8' Cal.	Good	

NOTE:
Existing trees to be removed are indicated on the plan with and "X" and shaded in the table.



SECTION VIEW

1 TREE PROTECTION DETAIL

Not To Scale

32 9383-01



ERIKSSON
ENGINEERING
ASSOCIATES, LTD.

145 COMMERCE DRIVE, SUITE A
GRAYSLAKE, ILLINOIS 60030
PHONE (847) 223-4804
FAX (847) 223-4864
EMAIL INFO@EEA-LTD.COM
PROFESSIONAL DESIGN FIRM
LICENSE NO. 184-003220
EXPIRES: 04/30/2017

THOMAS MIDDLE SCHOOL
ADDITION AND RENOVATIONS
1430 N. Belmont Avenue
Arlington Heights, Illinois

Reserved for Seal:

Expiration Date: _____

No.	Date	Description
	9/26/16	Issue For Bid & Permit
2	10/06/16	Addendum 2

Design By: SG		Date: 07/25/16
Approved By: KC		Project No.

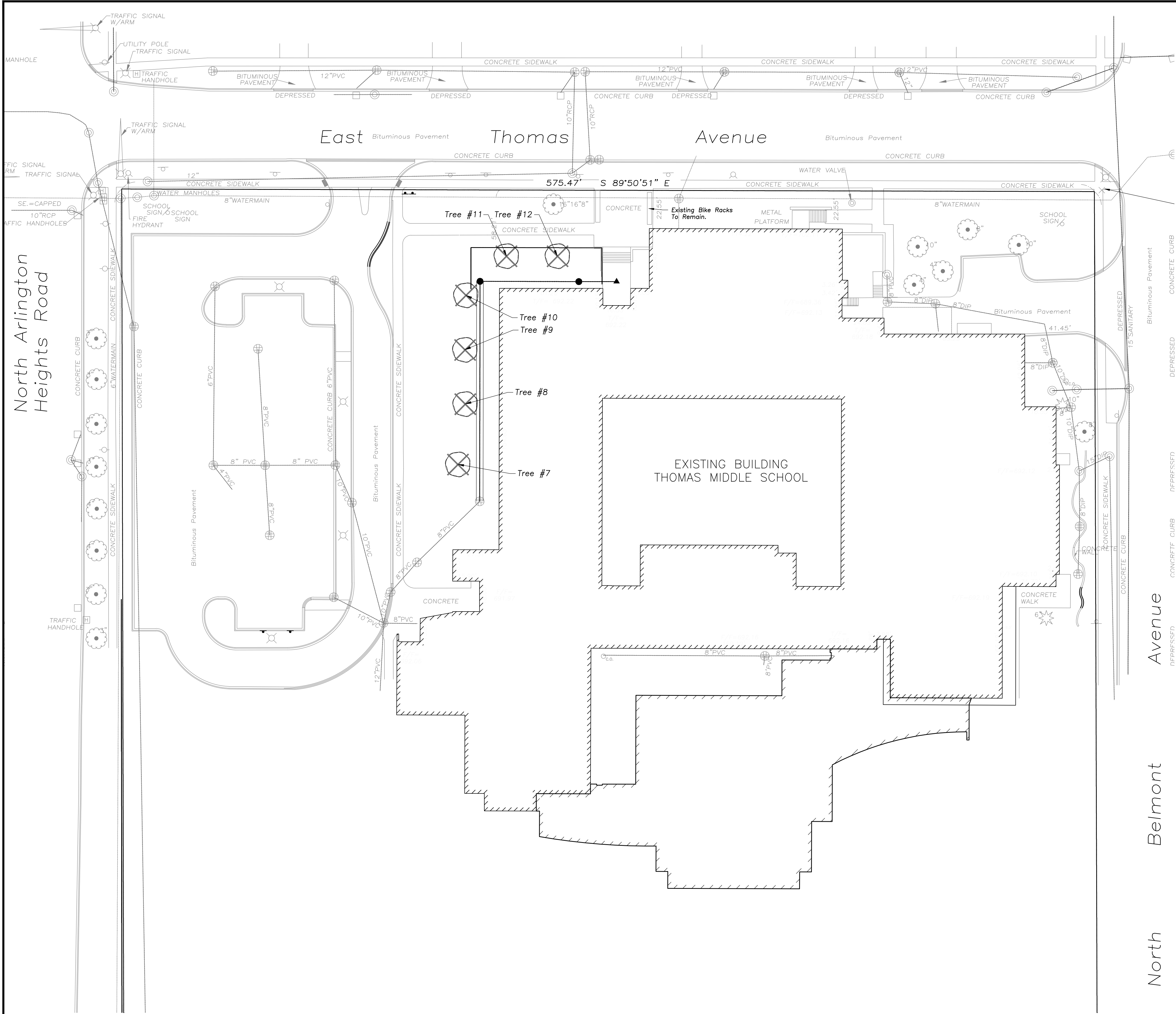
Sheet Title:
TREE
PRESERVATION
PLAN

Sheet No:

L1.3

E:\PROJECTS\EEA\Arlington Heights\Thomas School\Thomas MS_2016-10-5.dwg
Plotted: 10/06/16 @ 8:35am By: sgregory

North Arlington
Heights Road



SURVEY PROVIDED BY:

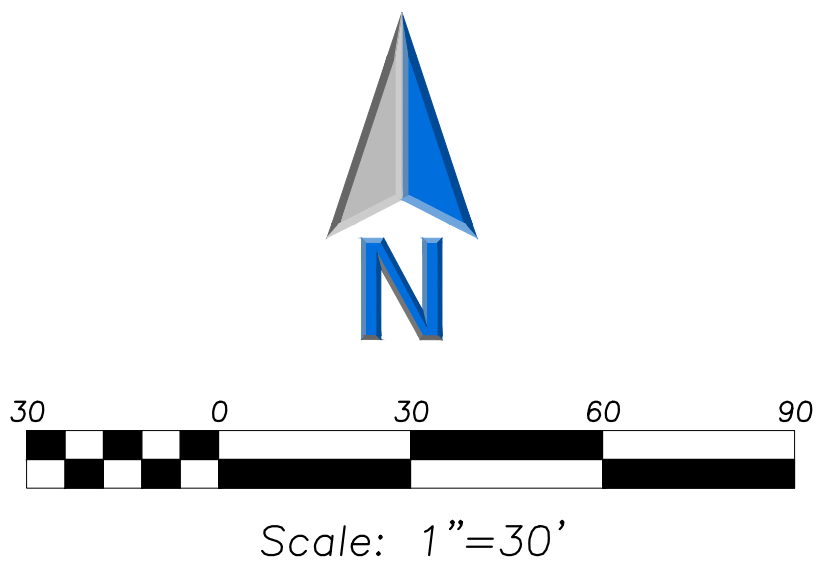
Plot of Survey and Topography Provided By R.E. Allen and Associates, Ltd. For Eriksson Engineering Associates on July 2, 2015. Order Number F5215.

PROJECT BENCHMARKS

SITE BENCHMARK:
CUT "X" CROSS ON CONCRETE SIDEWALK AT THE NORTHEAST CORNER OF PARCEL
NAVD88 ELEVATION = 697.05

J.U.L.I.E.

Note: The exact location of all utilities shall be verified by the contractor prior to construction activities. For utility locations call: J.U.L.I.E. 1 (800) 892-0123

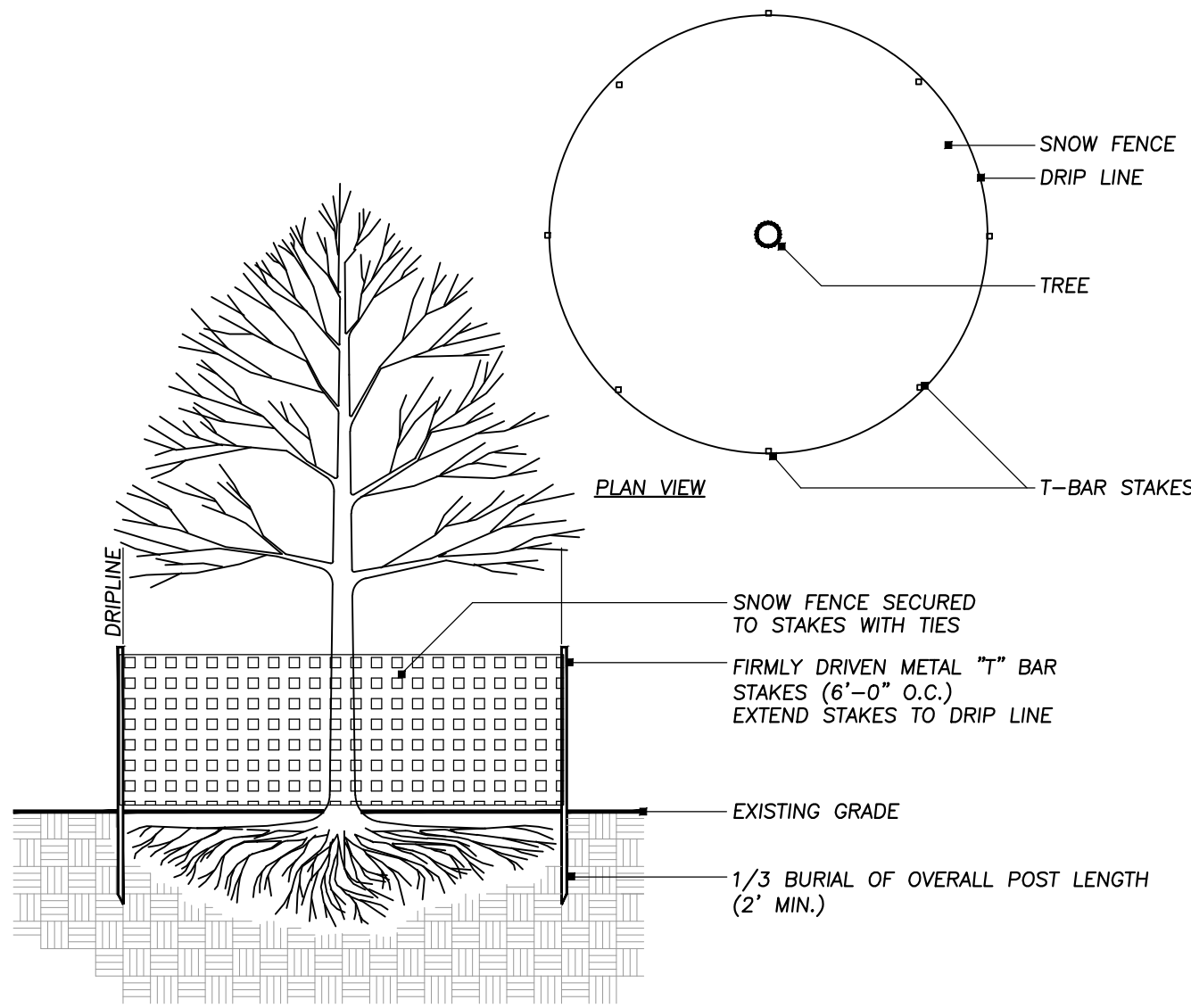


LEGEND	
EXISTING	PROPOSED

Existing Tree Survey Data:

Tree #	BOTANICAL NAME	COMMON NAME	TREE SIZE	CONDITION	COMMENTS
7	Malus spp.	Crabapple	12" Cal.	Good	
8	Gleditsia triacanthos inermis	Thornless Honeylocust	10" Cal.	Good	
9	Gleditsia triacanthos inermis	Thornless Honeylocust	8" Cal.	Good	
10	Gleditsia triacanthos inermis	Thornless Honeylocust	10" Cal.	Good	
11	Gleditsia triacanthos inermis	Thornless Honeylocust	12" Cal.	Good	
12	Gleditsia triacanthos inermis	Thornless Honeylocust	12" Cal.	Good	

NOTE:
Existing trees to be removed are indicated on the plan with and "X" and shaded in the table.



SECTION VIEW

1 TREE PROTECTION DETAIL

Not To Scale

32 9383-01



**ERIKSSON
ENGINEERING
ASSOCIATES, LTD.**

145 COMMERCE DRIVE, SUITE A
GRAYSLAKE, ILLINOIS 60030
PHONE (847) 223-4804
FAX (847) 223-4864
EMAIL INFO@EEA-LTD.COM
PROFESSIONAL DESIGN FIRM
LICENSE NO. 184-003220
EXPIRES: 04/30/2017

THOMAS MIDDLE SCHOOL ADDITION AND RENOVATIONS

1430 N. Belmont Avenue
Arlington Heights, Illinois

Reserved for Seal:

Expiration Date: _____

No.	Date	Description
	9/26/16	Issue For Bid & Permit
	10/06/16	Addendum 2

Design By: SG		Date: 07/25/16
Approved By: KC		Project No.

Sheet Title: **TREE
PRESERVATION
PLAN
Alternate 2**

Sheet No:

L1.3a