

Windsor Expansion

Parking and Traffic Recommendations

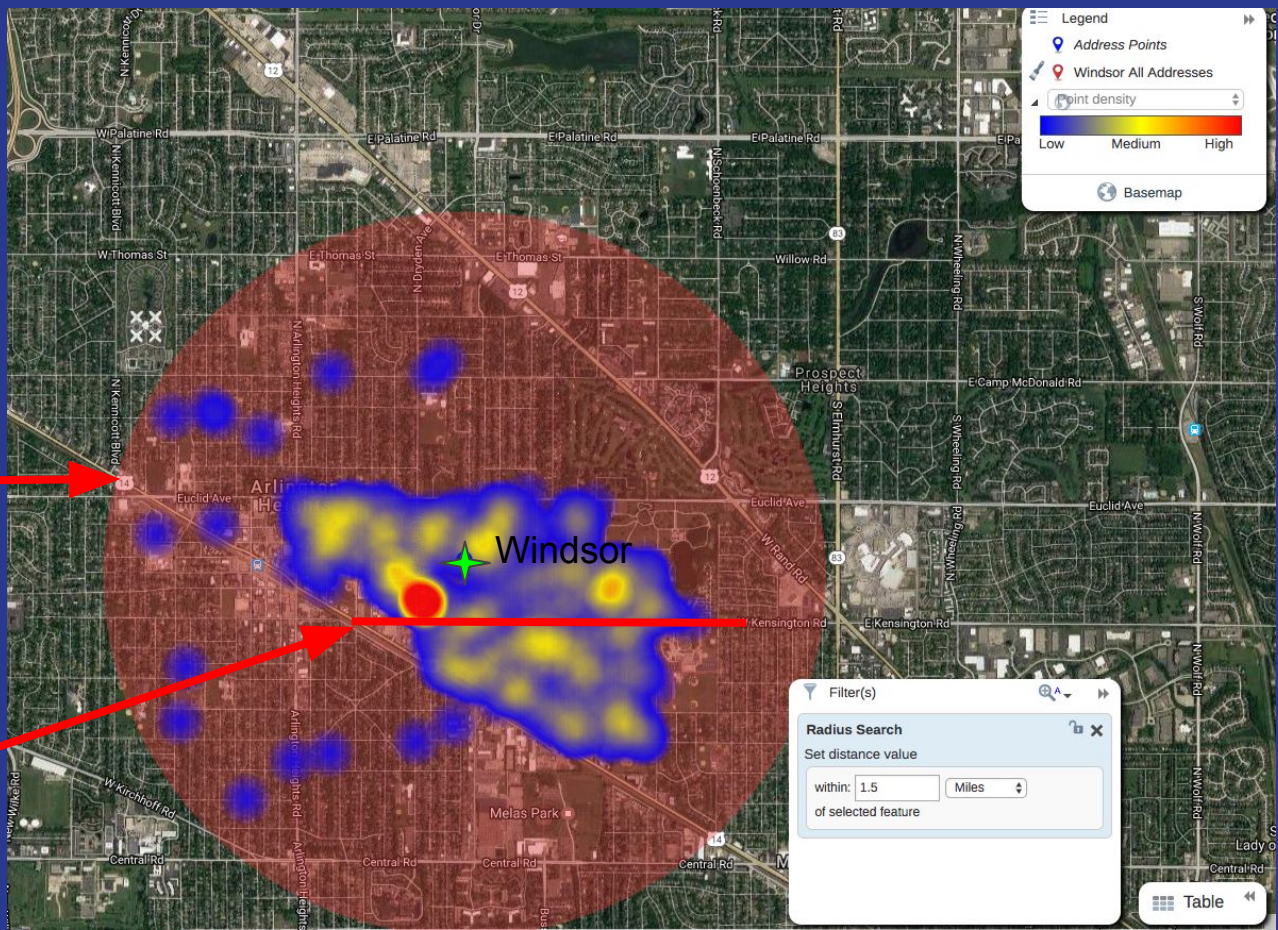




Windsor

Existing Conditions

Windsor - Existing Neighborhood Student Distribution Density Map



1.5 Mile Radius for Bus Service

Kensington Traffic Related Barrier to Walking and Biking

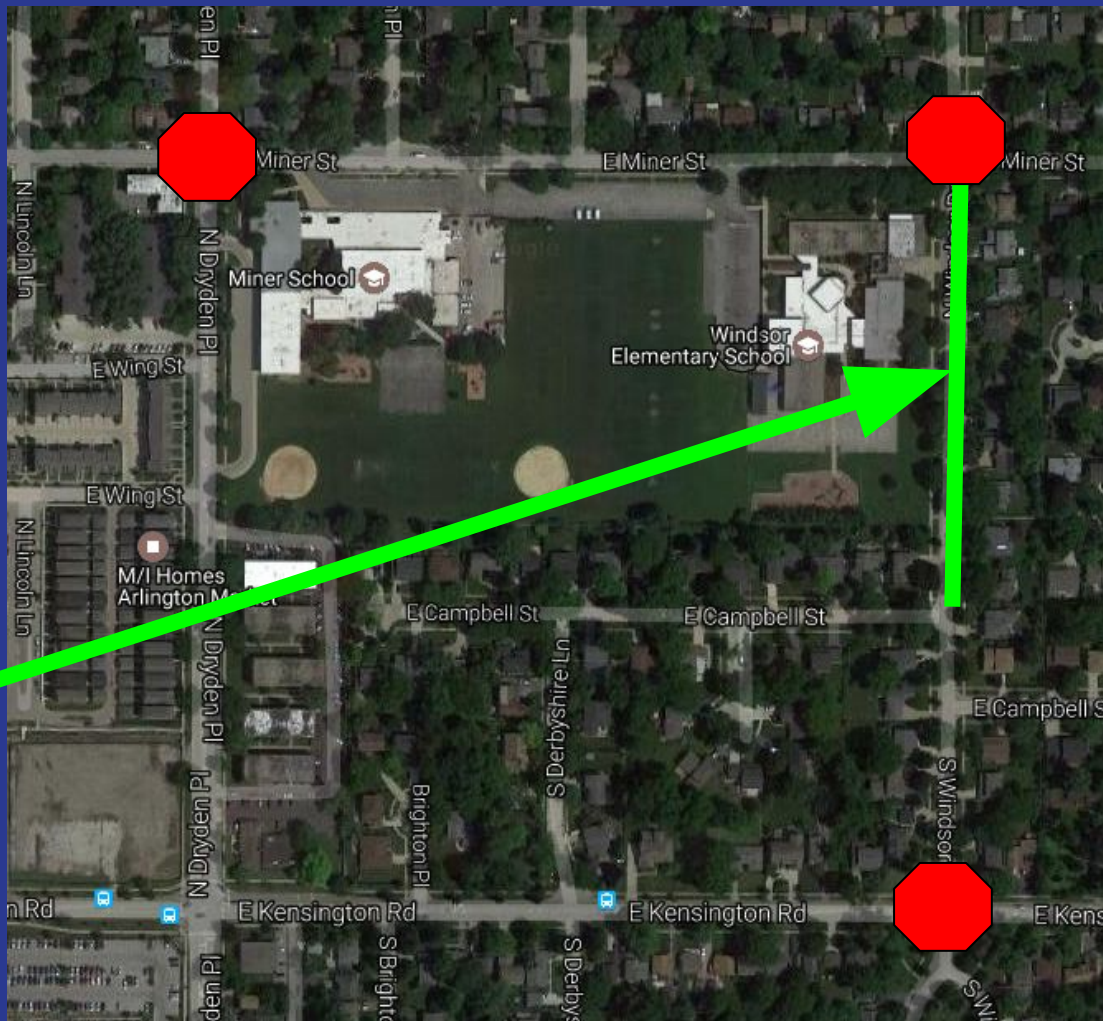
Existing Conditions



Current Crossing Guard Locations

- Miner and Dryden
- Miner and Windsor
- Kensington and Windsor

Southbound traffic **Only**
during morning drop off



Windsor - Existing Data

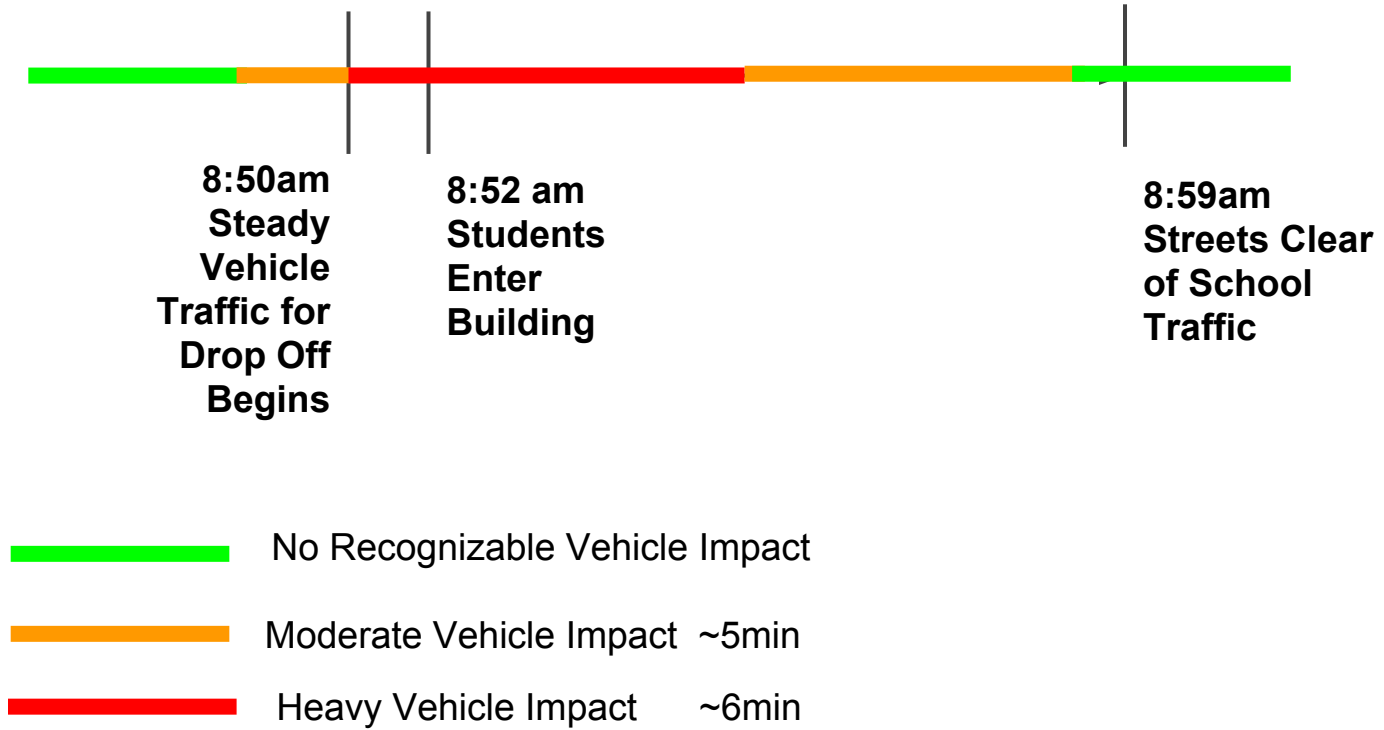
Description	2016-2017	Ratio (Spaces / x)
Parking Spaces (Onsite)	89	
Students	509	0.17
Staff	88	1.01
Classrooms (Includes modular + 1 LMC in 2016-2017 #)	29	3.07
Onsite Stacking (ft)	435	
Street Stacking (ft)	765	
Before School After School CAP Students	80	~15% of Total Enrollment
Number of Crossing Guards	3	
Number of Traffic Helpers		

Institute of Traffic Engineers Recommendation "Parking Generation" 4th Edition Elementary Schools	0.17	spaces per student
--	------	--------------------



Existing Morning Drop Off

Windsor - Morning Vehicle Traffic Timeline



Windsor - Aerial Footage of Drop Off 8:51am - 8:59am

- First portion shows footage over Miner Street
- Second portion shows footage over Windsor

**Click on Thumbnail to open Youtube Video*

Link: <https://www.youtube.com/watch?v=mmorHPdzNzQ>



Windsor - Drop Off 8:51am

Route Taken in Video

- East on Miner
- Turn South Bound on Windsor

**Click on Thumbnail to open Youtube Video*

Link: <https://www.youtube.com/watch?v=mWSSgxgABzc>



Windsor - Drop Off 9:00 am

Route Taken Route in Video

- East on Miner
- Turn South Bound on Windsor

**Click on Thumbnail to open Youtube Video*

Link: <https://www.youtube.com/watch?v=kN6NQ7hSOhk>



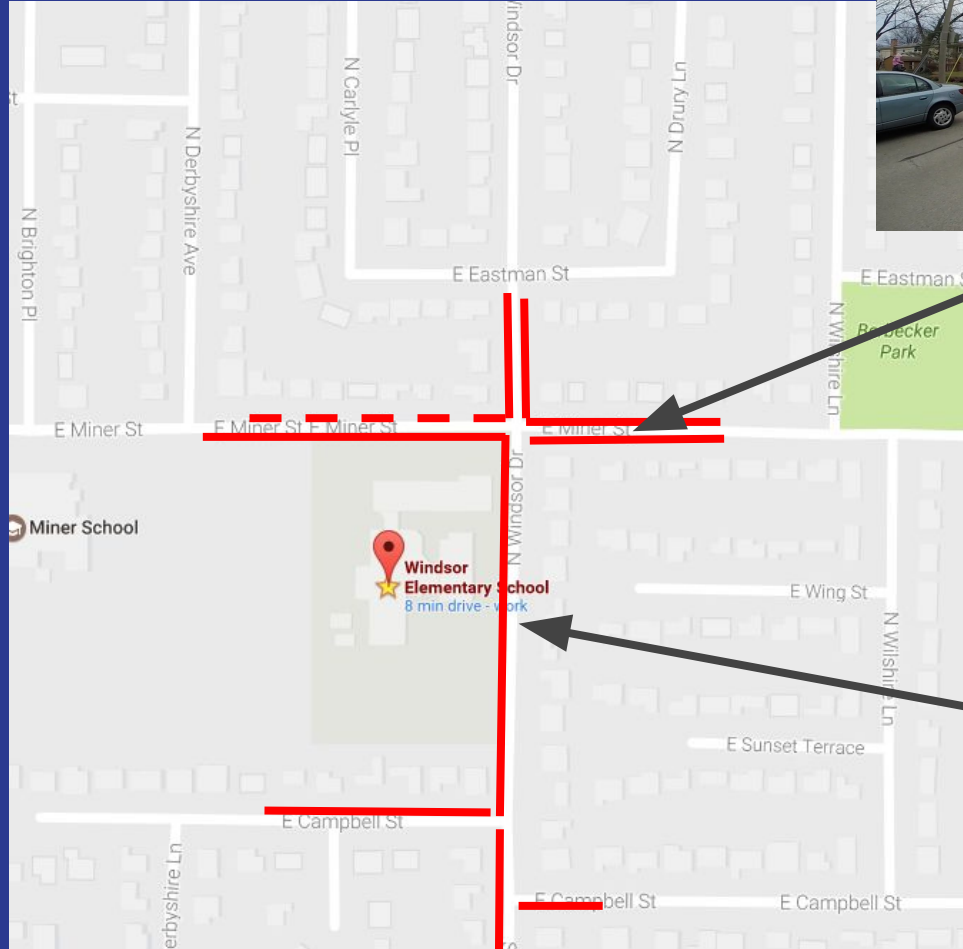


Afternoon Pickup

Windsor - Existing Afternoon Staging

Red Lines show where cars currently stage to pick up students.

Dashed line shows where sporadic non-continuous parking occurs



Bottleneck Occurs Here on Miner Due to Parking on Both Sides of Street

Currently North and South Bound Traffic on Windsor During Pick-up

Windsor - Pickup Aerial Footage 3:33 pm - 3:45 pm

- Footage Shows Windsor Drive During Afternoon Pickup

**Click on Thumbnail to open Youtube Video*

Link: <https://www.youtube.com/watch?v=qLxoQi5GLNk>



Link: <https://www.youtube.com/watch?v=qLxoQi5GLNk>

Windsor - Pickup Street Level Footage 3:35pm

Route Taken in Video

- Windsor Southbound from North of Miner

**Click on Thumbnail to open Youtube Video*

Link: <https://www.youtube.com/watch?v=bvYWU95lvw8>



Windsor - Pickup Street Level Footage 3:50pm

Route Taken in Video

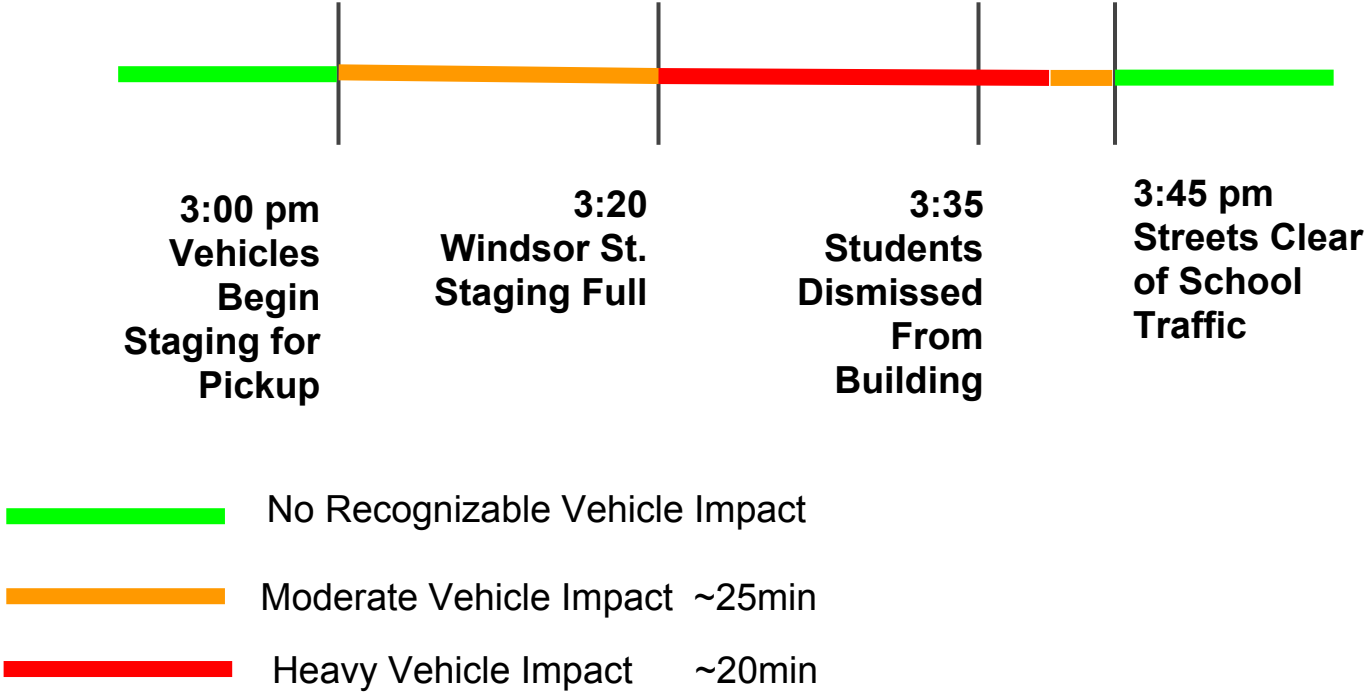
- Windsor Southbound

Click on Thumbnail to open Youtube Video

Link: <https://www.youtube.com/watch?v=7mY5XWeAT>



Windsor - Afternoon Vehicle Traffic Timeline

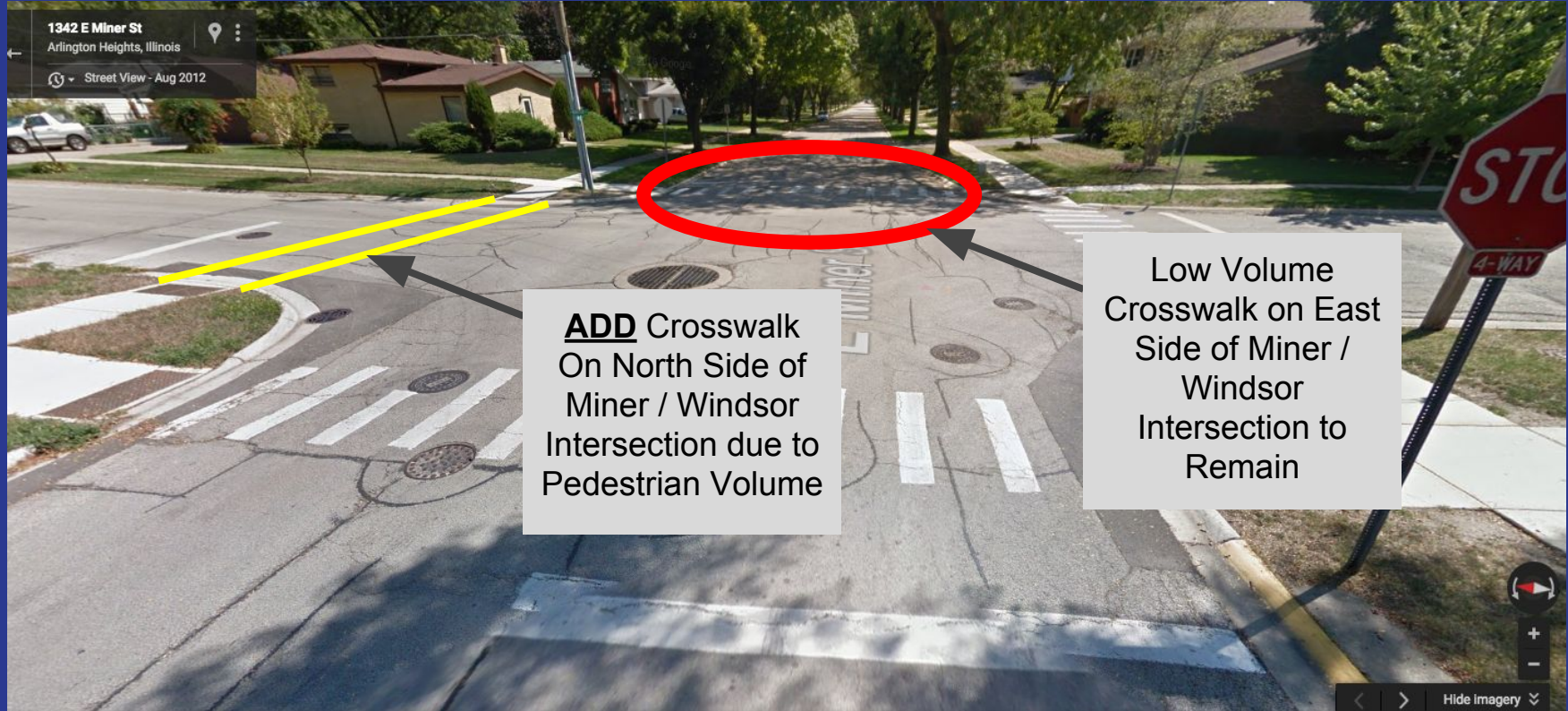




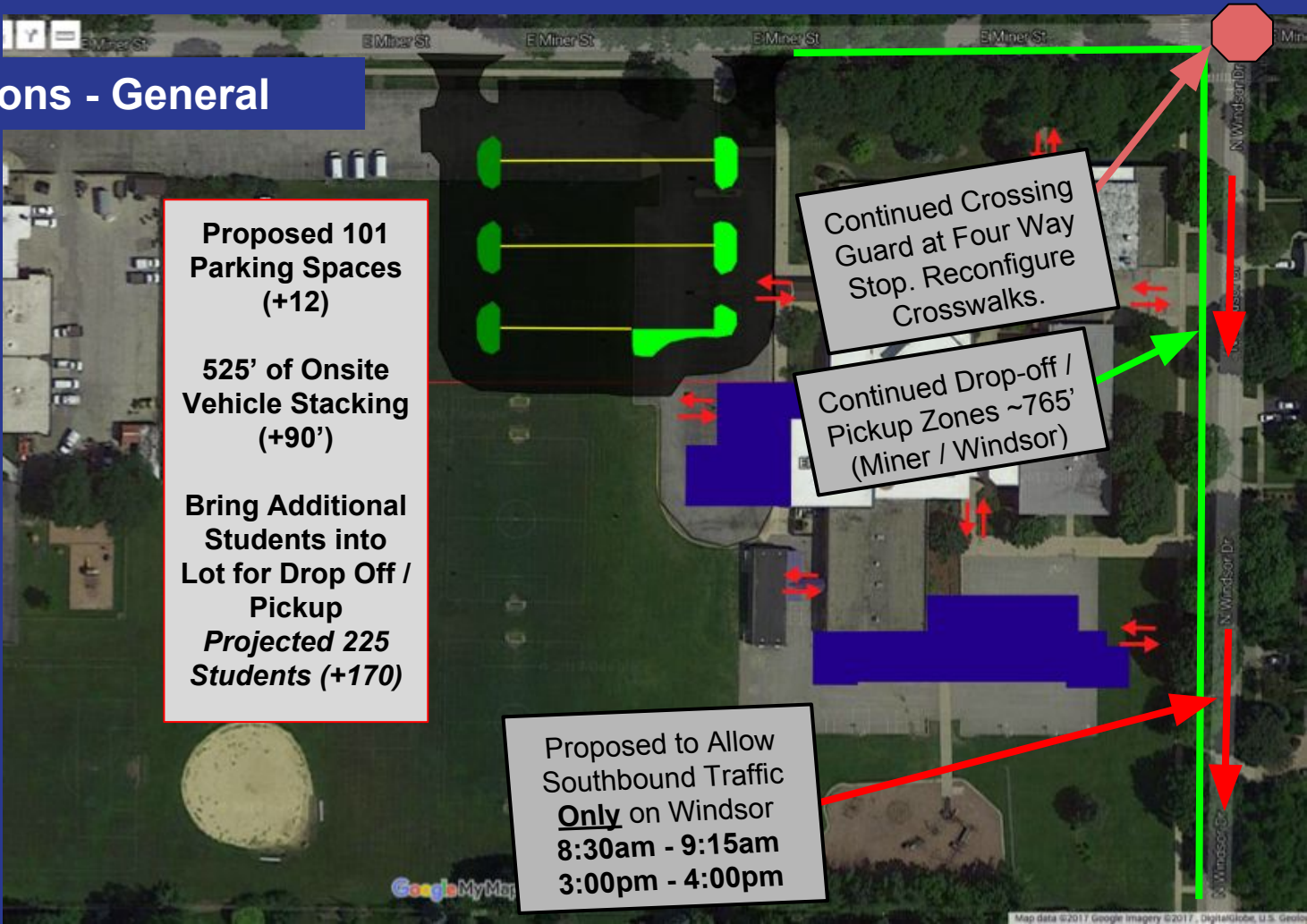
Windsor Proposed Conditions

Proposed Conditions - General

- Based on Input from Crossing Guard due to pedestrian traffic flow



Proposed Conditions - General



Windsor - Proposed Conditions Afternoon Staging

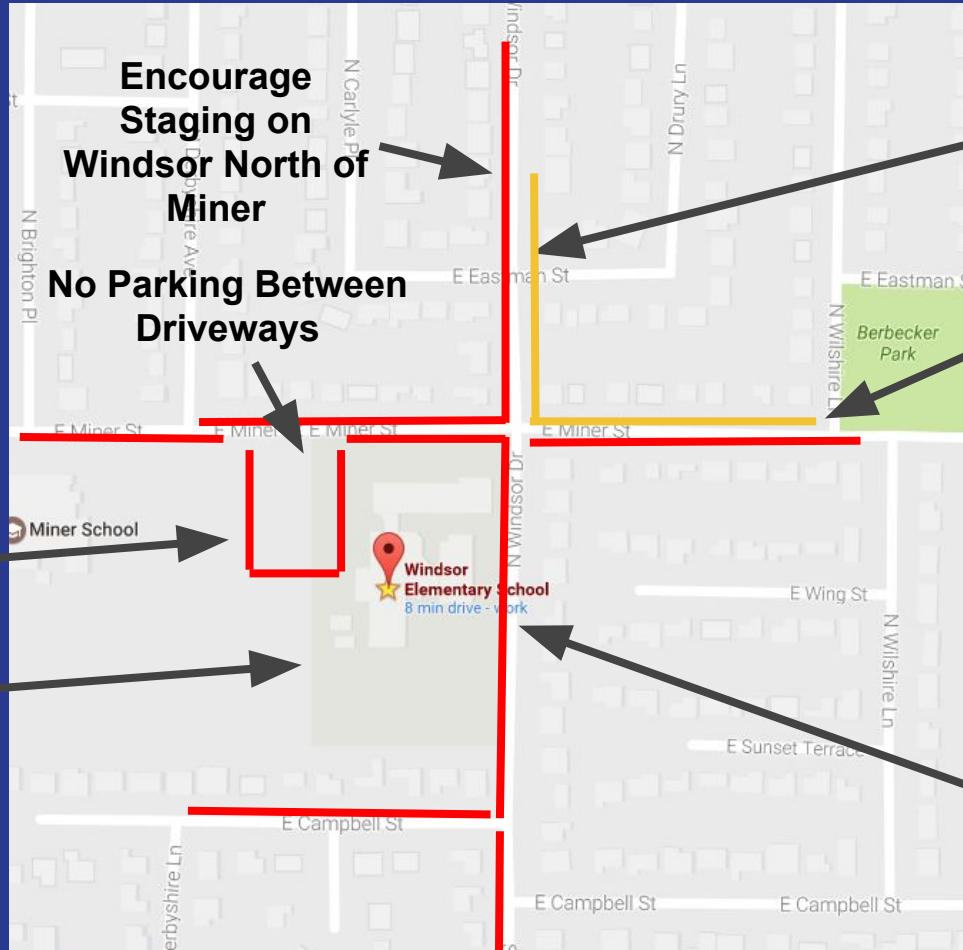
Red Lines show where cars can stage to pick up students.

Encourage Staging on Windsor North of Miner

No Parking Between Driveways

Student Pickup in New Parking Lot

Location of New Play Lot



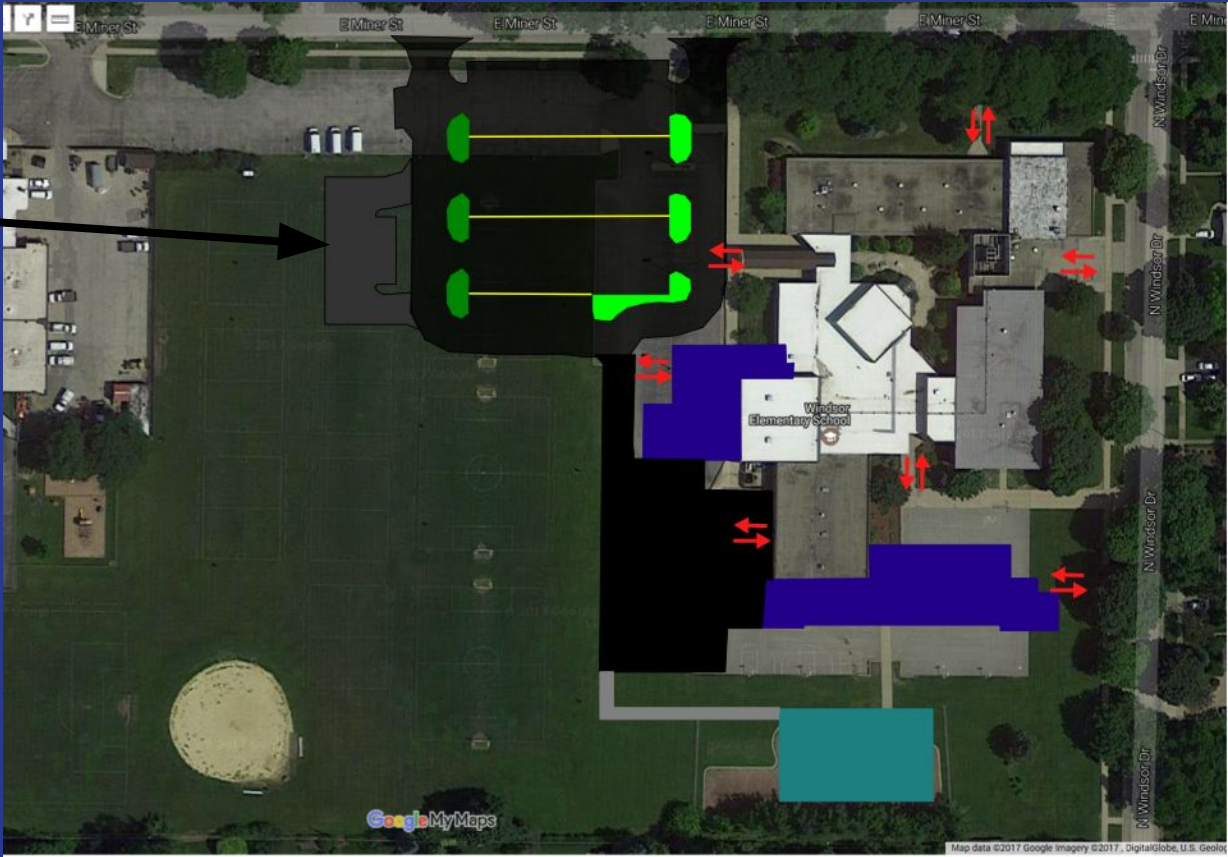
Proposed No Parking on the East Side of Windsor, North of Miner

Proposed No Parking on North Side of Miner, East of Windsor to alleviate traffic bottleneck.

Only allow Southbound Traffic During Afternoon Pickup in addition to Morning

Proposed Conditions - Land Banked Parking

Proposed Land Banked Parking (+19 Spaces)



Windsor - Projected Information

Description	2016-2017	Ratio (Spaces / x)	2020-2021 (Projected)	Ratio (Spaces / x)	Notes
Parking Spaces (Onsite)	89		101		
Students	509	0.17	596	0.17	2020-2021 is projected
Staff	88	1.01	95	1.06	2020-2021 Is using same ratio as currently used at similar AHSD25 school + 6 staff buffer
Classrooms (<i>Includes modular + 1 LMC in 2016-2017 #</i>)	29	3.07	32	3.16	
Onsite Stacking (ft)	435		525		90' of Onsite Stacking Increase to (30 Cars Onsite at One Time)
Morning Street Stacking (ft)	765		765		
Before School After School CAP Students	80		90		Projected at 15% of enrollment

Institute of Traffic Engineers Recommendation "Parking Generation" 4th Edition Elementary Schools	0.17	spaces per student
--	------	--------------------

Windsor - Proposed Solutions

AHSD25

- Encourage more people to use west parking lot drop off / pick-up lane that is provided
 - Review student population to determine which students would be dropped off in west lot vs. which would be dropped off on street
- Consider additional staff members to Windsor to assist with getting students in and out of vehicles
- Continue communications with families as to expectations for drop off and pickup including the encouragement of carpooling, biking and walking. Include map of recommended drop off and afternoon staging areas.
- Provide land banked parking option to review with Village if it is determined additional parking is needed (19 spaces).

Village of Arlington Heights

- Restrict northbound traffic on Windsor at morning drop off (*currently in place*), as well as at afternoon pickup (*not in place currently*).
- Place no parking signs on north side of Miner East of Windsor
- Place no parking signs during drop off and pickup on east side of Windsor, North of Miner
- Reconfigure Miner / Windsor Crosswalks to be on North, South, East, and West sides
- No Parking between new entrance and exit aisles
- Police to continue monitoring traffic for issues related to posted regulations (jay walking, street right away, etc)

Barriers to Walking and Biking

- **Distance** (*Medium Impact in AH*)
- **Traffic Related Dangers - Busy Streets** (*Medium Impact in AH*)
 - **Kensington**
- **Weather Conditions** (*High Impact in AH*)
- **Crime or Perceived Crime Potential** (*Low Impact in AH*)
- **Student's Age**
- **Student Guardian Convenience**

Information Contained in this presentation was reviewed with the following individuals during a Windsor Traffic collaboration meeting held on February 1st, 2017 at Village Hall:

- **Dr. Lori Bein** - Superintendent, Arlington Heights School District 25
- **Stacey Mallek** - Assistant Superintendent for Business, Arlington Heights School District 25
- **Ryan Schulz** - Director of Facilities Management, Arlington Heights School District 25
- **Steve Corcoran** - Traffic Engineer, Eriksson Engineering, Arlington Heights School District 25
- **Charles Witherington-Perkins** - Director of Planning and Community Development, Village of Arlington Heights
- **Sam Hubbard** - Development Planner, Village of Arlington Heights
- **Mike Pagones** - Engineering, Village of Arlington Heights
- **Tom Ponsot** - Engineering, Village of Arlington Heights
- **Doug Hajek** - Sergeant of Community Service Bureau, Arlington Heights Police Department
- **Rick Veenstra** - School Resource Officer, Arlington Heights Police Department

