

ERIKSSON
ENGINEERING
ASSOCIATES, LTD.

145 COMMERCE DRIVE, SUITE A
GRAYSLAKE, ILLINOIS 60030
PHONE (847) 223-4804
FAX (847) 223-4864
EMAIL INFO@EEA-LTD.COM
PROFESSIONAL DESIGN FIRM
LICENSE NO. 184-003220
EXPIRES: 04/30/2017

WINDSOR ELEMENTARY SCHOOL ADDITION AND RENOVATIONS

1315 E. Miner Street
Arlington Heights, Illinois

Reserved for Seal:

Expiration Date: _____

No.	Date	Description
1	12/14/16	ISSUE FOR BID & PERMIT
2	01/05/17	ADDENDUM 2
3	01/24/17	REVISED PARKING LOT LAYOUT
	01/27/17	ISSUED FOR CONSTRUCTION

© ERIKSSON ENGINEERING ASSOCIATES, LTD. 2017
THIS PLAN & SPEC ARE THE PROPERTY OF ERIKSSON ENGINEERING ASSOCIATES, LTD.
NO REPRODUCTION OR PART OF THESE PLANS IS PERMITTED WITHOUT THE WRITTEN
CONSENT OF ERIKSSON ENGINEERING ASSOCIATES, LTD.

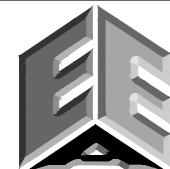
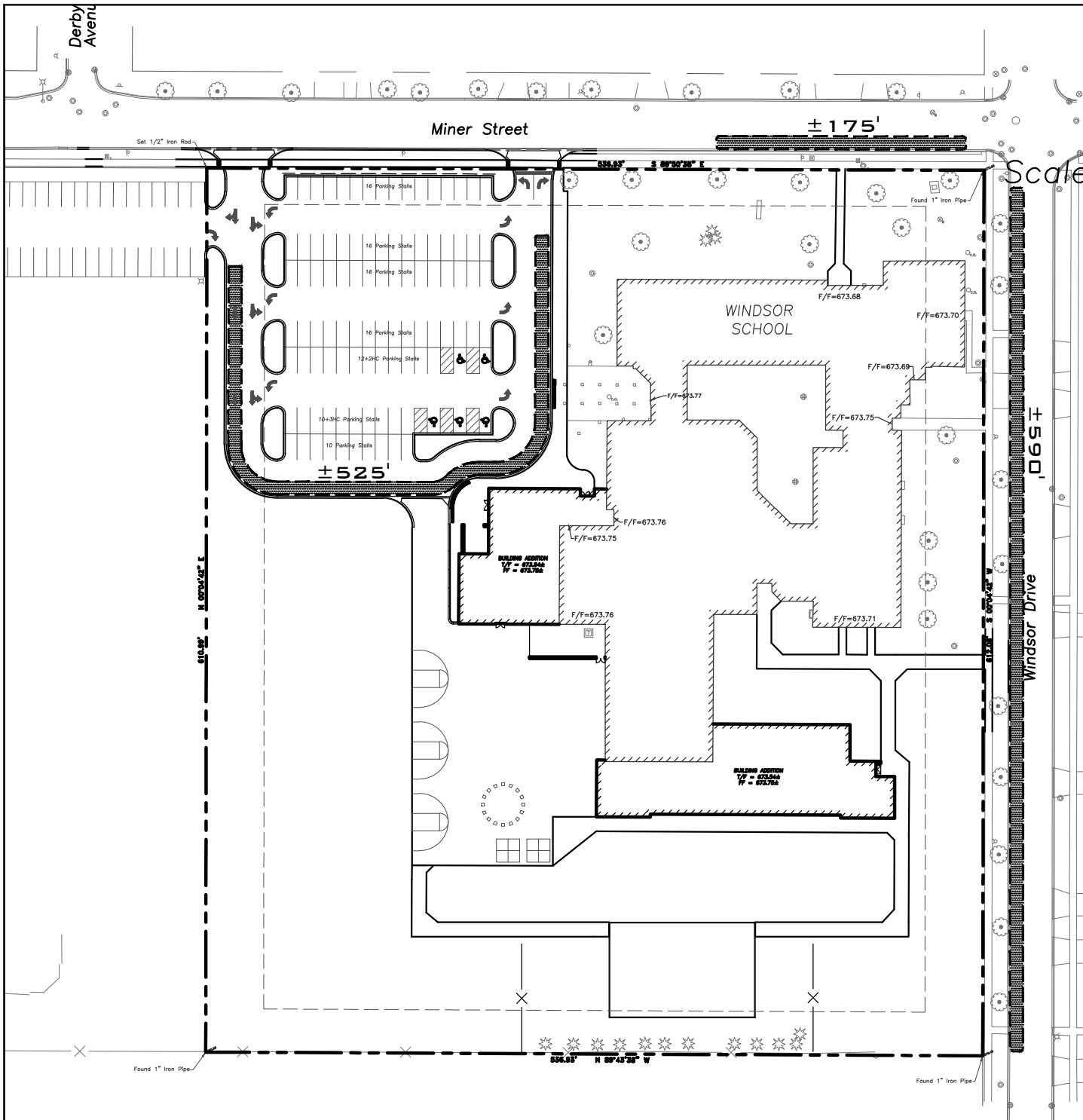
Design By:	JC	Date:	12/14/16
Approved By:	KC	Project No.	

Sheet Title:

LAND BANK
PARKING

Sheet No:

CX4.1



**ERIKSSON
ENGINEERING
ASSOCIATES, LTD.**

145 COMMERCE DRIVE, SUITE A
GRAYSLAKE, ILLINOIS 60030
PHONE: (847) 223-4804
FAX: (847) 223-4864
EMAIL: INFO@EEA-LTD.COM
PROFESSIONAL DESIGN FIRM
LICENSE NO. 184-003220
EXPIRES: 04/30/2017

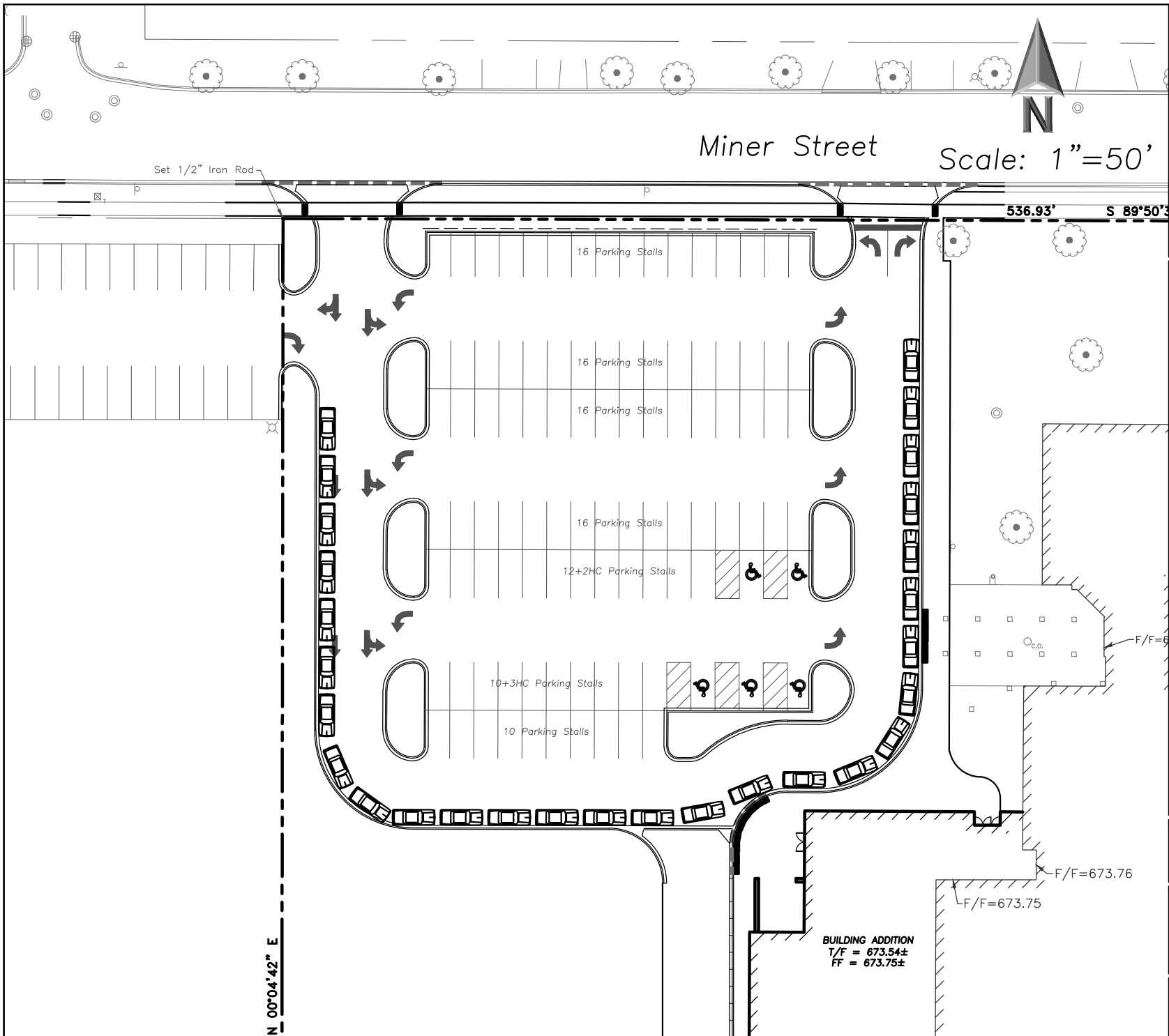
**WINDSOR ELEMENTARY SCHOOL
ADDITION AND RENOVATIONS
1315 E. Miner Street
Arlington Heights, Illinois**

© ERIKSSON ENGINEERING ASSOCIATES, LTD., 2017
THIS PLAN IS BEING USED FOR THE PROJECT OF WINDSOR ELEMENTARY SCHOOL, 1315 E. MINER STREET, ARLINGTON HEIGHTS, ILLINOIS. NO OTHER USES ARE PERMITTED WITHOUT THE WRITTEN CONSENT OF ERIKSSON ENGINEERING ASSOCIATES, LTD.

Design By:	JC	Date:	01/25/17
Checked By:	SC	Project No:	0000.00

Sheet Title:
**TRAFFIC -
WINDSOR
SCHOOL LOADING
ZONES**

Sheet No:
CSK-3



**ERIKSSON
ENGINEERING
ASSOCIATES, LTD.**

145 COMMERCE DRIVE, SUITE A
GRAYSLAKE, ILLINOIS 60030
PHONE (847) 223-4804
FAX (847) 223-4864
EMAIL INFO@EEA-LTD.COM
PROFESSIONAL DESIGN FIRM
LICENSE NO. 184-003220
EXPIRES: 04/30/2017

**WINDSOR ELEMENTARY SCHOOL
ADDITION AND RENOVATIONS
1315 E. Miner Street
Arlington Heights, Illinois**

<small>© ERIKSSON ENGINEERING ASSOCIATES, LTD., 2017 THIS PLAN IS ISSUED AS THE PROPERTY OF ERIKSSON ENGINEERING ASSOCIATES, LTD. IT IS NOT TO BE REPRODUCED OR TRANSMITTED IN ANY FORM OR BY ANY MEANS, ELECTRONIC OR MECHANICAL, WITHOUT PERMISSION IN WRITING FROM ERIKSSON ENGINEERING ASSOCIATES, LTD.</small>	
Design By: JC	Date: 01/25/17
Checked By: SC	Project No: 0000.00

Sheet Title: **TRAFFIC -
PROPOSED
VEHICLE
STACKING**

Sheet No: **CSK-2**