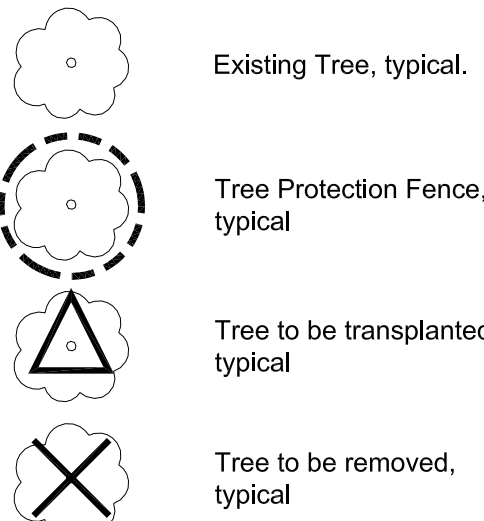


TREE PRESERVATION AND REMOVALS LIST

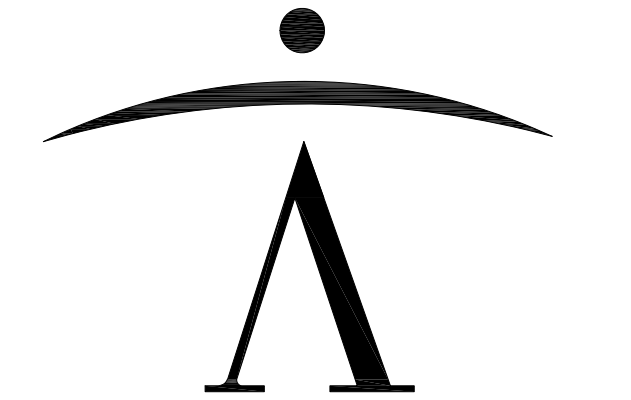
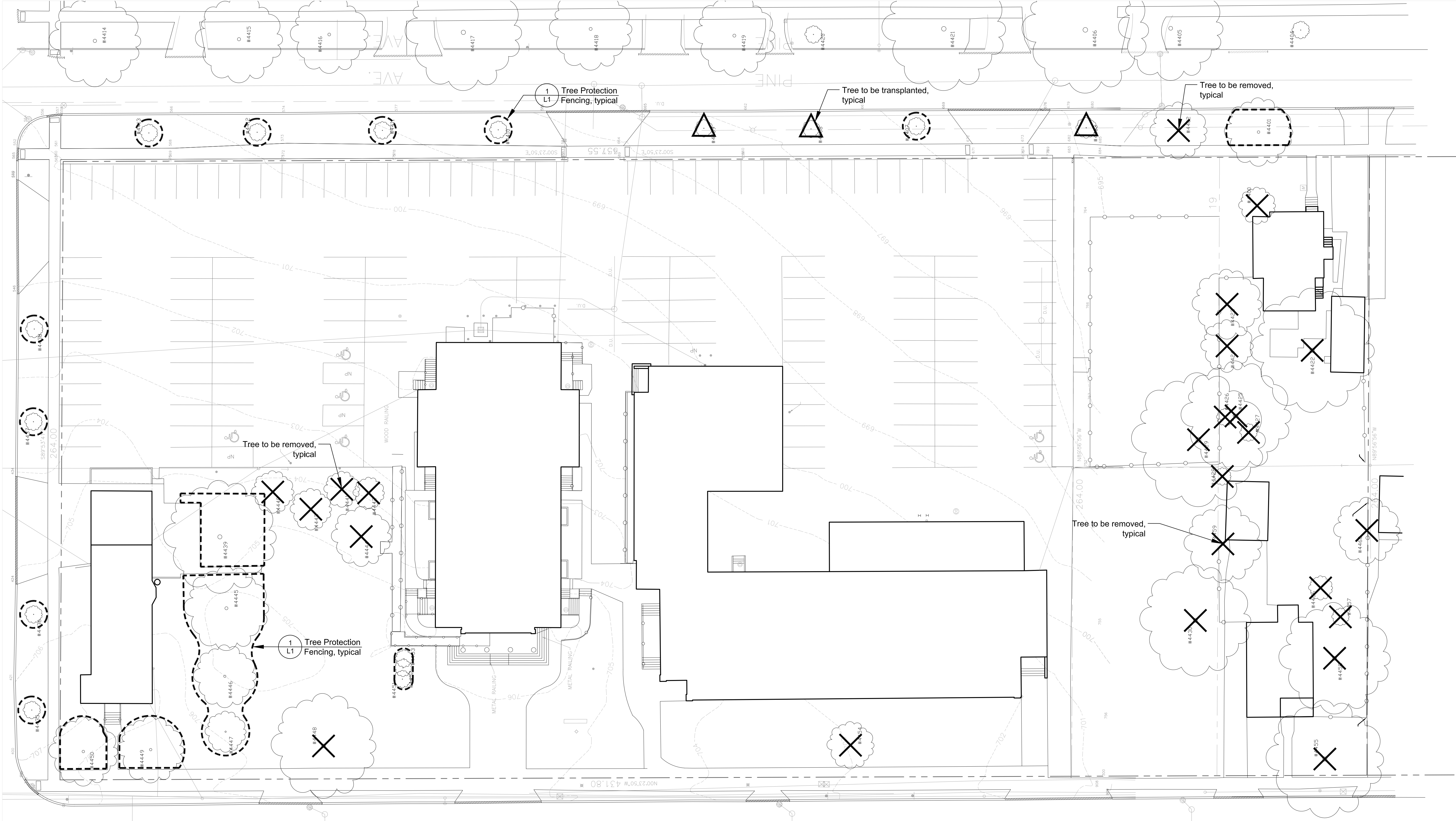
Tag #	Size	Tree Type	Species	Condition	Comments	Status	Tag #	Size	Tree Type	Condition	Comments	Status
4400	14.5"	Deciduous	Yew	Fair	Sheared, Not a tree	Remove	4431	26"	Deciduous			Keep
4401	20"	Deciduous	Silver Maple	Poor	Sparse, leggy	Remove	4432	6"	Deciduous			Keep
4402	12"	Deciduous	Littleleaf Linden	Poor		Remove	4433	16"	Deciduous			Keep
4403	4"	Deciduous	Miyabe Maple	Good	Donor tree	Transplant	4434	16"	Deciduous			Keep
4404	12"	Deciduous					4435	3"	Deciduous	Carpinus caroliniana	Good	Memorial
4405	16"	Deciduous					4436	3"	Deciduous	American Beech	Good	Memorial
4406	28"	Deciduous					4437	3"	Deciduous	Honeylocust	Good	Keep
4407	3"	Deciduous	Kentucky Coffee Tree	Good	Donor tree	Keep	4438	3"	Deciduous	Hybrid Elm	Good	Keep
4408	3"	Deciduous	Kentucky Coffee Tree	Good		Transplant	4439	40"	Deciduous	Silver Maple	Poor	Some dead wood
4409	3"	Deciduous	Honeylocust	Good	Memorial tree	Keep	4440	20"	Coniferous	Colorado Spruce	Poor/Fair	Sparse, dead wood
4410	3"	Deciduous	Honeylocust	Fair	Dead wood, Donor tree	Keep	4441	22"	Coniferous	Colorado Spruce	Poor	Lost leader, shaded out
4411	3"	Deciduous	Hackberry	Good	Some dead wood, Memorial tree	Keep	4442	22"	Coniferous	Colorado Spruce	Poor/Fair	Lost leader
4412	3"	Deciduous	Honeylocust	Good		Keep	4443	8"	Coniferous	Douglas fir	Fair	Shaded
4413	3"	Deciduous	Hackberry	Good		Keep	4444	8"	Deciduous	Crabapple	Poor	Dead wood, suckers, applescab
4414	38"	Deciduous				Keep	4445	24"	Coniferous	Colorado Spruce	Fair	Lost leader
4415	22"	Deciduous				Keep	4446	20"	Coniferous	White Fir	Poor	One sided
4416	28"	Deciduous				Keep	4447	14"	Coniferous	Colorado Spruce	Poor	Double leader, one sided
4417	22"	Deciduous				Keep	4448	20"	Deciduous	Norway Maple	Good	
4418	28"	Deciduous				Keep	4449	18"	Deciduous	Red Maple	Poor	Dead wood, trunk wound
4419	20"	Deciduous				Keep	4450	20"	Deciduous	Purple-leaved Norway Maple	Good	
4420	3"	Deciduous				Keep	4451	NA	Deciduous	Burning Bush	Good	Sheared, not a tree
4421	28"	Deciduous				Keep	4452	NA	Deciduous	Burning Bush	Fair	Sheared, not a tree
4422	38"	Deciduous	Silver Maple	Poor	Topped, dead wood	Remove	4453	NA	Deciduous	Burning Bush	Good	Sheared, not a tree
4423	18"	Deciduous	White Pine	Fair	Leggy, dead wood	Remove	4454	NA	Deciduous	Burning Bush	Fair	Sheared, not a tree
4424	14"	Deciduous	Colorado Spruce	Poor	Leggy, dead wood	Remove	4455	32"	Deciduous	Norway Maple	Good	
4425	22"	Deciduous	Black Walnut	Poor	Leaning, poor form, trunk wound	Remove	4456	15"	Deciduous	Crabapple	Dead	dead
4426	3"	Deciduous	Hackberry	Poor	Volunteer growing under Walnut	Remove	4457	5"	Coniferous	Asteriaceae	Fair	
4427	18"	Deciduous	Black Walnut	Poor	Leaning, poor form	Remove	4458	40"	Deciduous	Silver Maple	Fair	Trunk rot
4428	32"	Deciduous	Black Walnut	Good		Remove	4459	(2) 11"	Deciduous	Mulberry	Poor	Rubbed/grafted trunks
4429	38"	Deciduous	Black Walnut	Good	Some dead wood	Remove	4460	11", 13"	Deciduous	Mulberry	Fair	
4430	18"	Deciduous	Silver Maple	Good	Some dead wood	Remove						

TREE PRESERVATION LEGEND



TREE PRESERVATION AND REMOVALS NOTES

- Contractor shall install construction fence at the limits of construction prior to beginning work. Maintain and adjust construction fencing as needed during progress of construction. Staging and construction access shall be approved by Owner.
- Contractor shall install tree protection fencing as shown on the plans prior to beginning work. Maintain and adjust tree protection fencing as needed during progress of construction. Storage of materials, vehicular access, and all other construction activities are strictly prohibited within the limits of the tree protection fencing.
- Plans indicate general location and limits of removals. Contractor shall perform removals only as necessary for construction of proposed improvements. No additional payments will be made for removals or restoration not required to construct the improvements as drawn and specified. Refer to Layout Plan for more specific information regarding proposed improvements and verify conditions in the field prior to performing removals.
- Tree stumps shall be ground to a minimum depth of 18" below existing grade or as required to properly perform the work.
- Where turf or plantings are proposed in existing paved areas, remove all base material.
- Remove all utilities designated for removal to extent required for improvements, unless otherwise noted. Cap ends of any remaining underground conduit and piping, and pull all electrical wire out at source.
- Items indicated for Removal shall include complete removal of above grade item and below grade appurtenances (foundations, urban fill, wiring, piping, etc.) including disposal off-site following applicable codes and ordinances, unless otherwise shown on the plans.
- Contractor to protect all existing utilities and all other site features not designated for removal. Contractor is responsible for replacing/repairing any existing utilities or other site features damaged during construction to the original condition at no cost to the Owner.
- Contractor responsible for maintaining existing utility services (electrical, sanitary, storm) during construction unless otherwise indicated in the Contract Documents.
- Contractor shall coordinate all work so public sidewalk remains open throughout construction.
- Refer to civil and electrical plans for additional utility adjustments and removals.
- Refer to specifications for additional conditions, standards and notes.



newman architecture
1730 Park Street, Suite 115, Naperville, Illinois 60563-2611
(630) 420-1600 FAX (630) 420-1987 www.newmanarchitecture.com

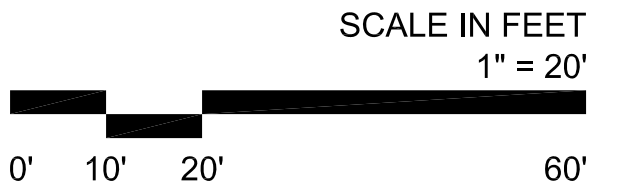


PROJECT NAME:
VILLAGE SUBMITTAL
CHURCH ADDITION
AND RENOVATION
820 N. ARLINGTON HEIGHTS ROAD
ARLINGTON HEIGHTS, ILLINOIS 60004

FOR
ST. JAMES PARISH
AND
THE ARCHDIOCESE OF CHICAGO

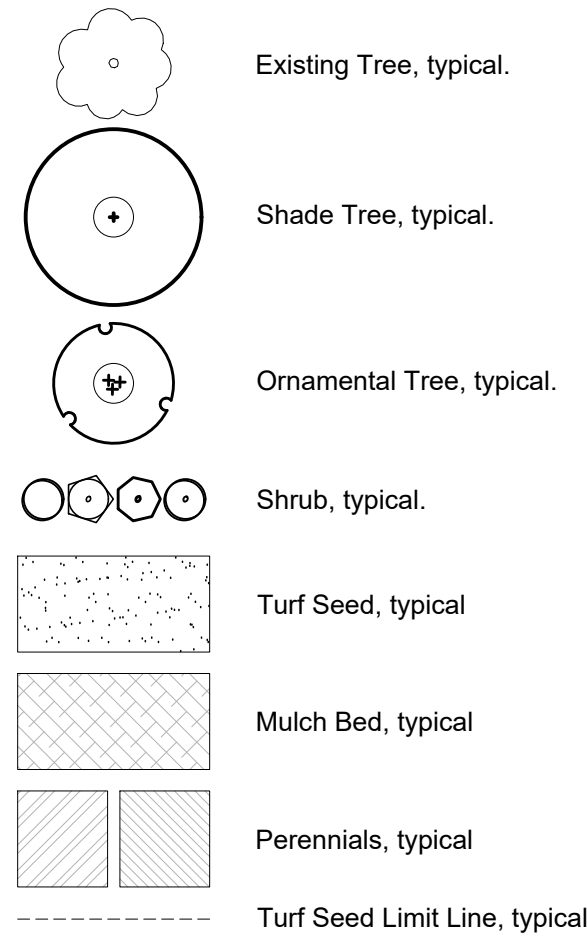
DRAWING TITLE:
TREE PRESERVATION
PLAN

RESUBMITTED 12/20/17



L1

PLANTING LEGEND

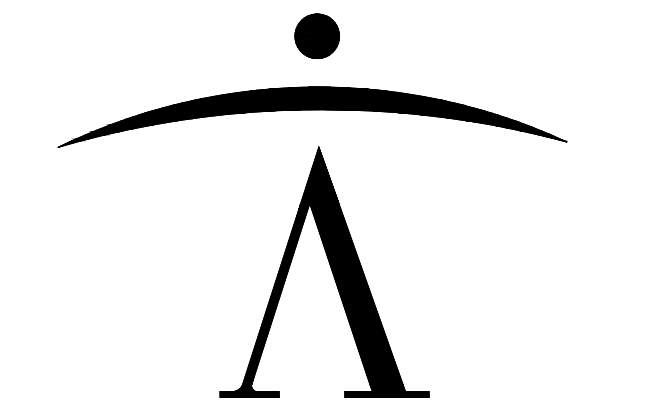
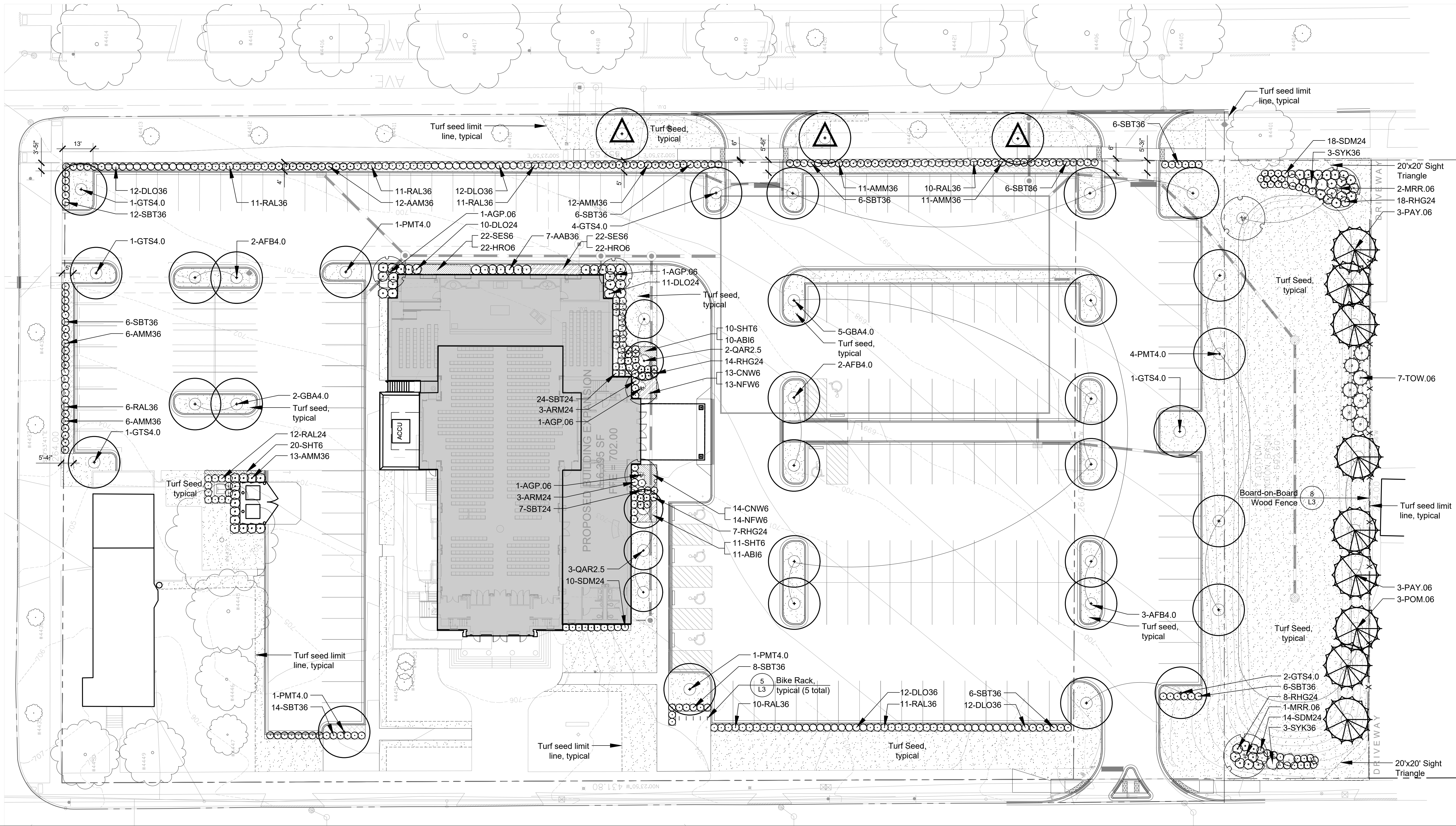


PLANTING NOTES

- Seed limit line is approximate. Seed to limits of grading and disturbance. Contractor responsible for restoration of any unauthorized disruption outside of designated construction area.
- Contractor responsible for erosion control in all seeded areas.
- Tree mulch rings in turf areas are 5 foot diameter, typical. Contractor shall provide a mulch ring around all existing trees within the limit of work. Remove all existing grass from area to be mulched and provide a typical v-trench edge.
- Bedlines are to be spade cut to a minimum depth of 3 inches unless otherwise shown on the plans. Curved bedlines are to be smooth and not segmented.
- Do not locate plants within 10' of utility structures, or within 5' horizontally of underground utility lines unless otherwise shown on the plans. Consult with Landscape Architect if these conditions exist.
- Plants and other materials are quantified and summarized for the convenience of the Owner and jurisdictional agencies only. Confirm and install sufficient quantities to complete the work as drawn and specified. No additional payments will be made for materials required to complete the work as drawn and specified.
- Existing tree locations are based on the latest available aerial photography. Locations will be verified with forthcoming tree survey.
- All turf seed areas to be Conserv FS Sunny Mix Seed or approved equal.
- Refer to specifications for additional conditions, standards and notes.

PLANT MATERIAL LIST

Code	Botanical Name	Common Name	Size	Qty
Shade Trees				
AFB4.0	Acer x freemanii 'Autumn Blaze'	Autumn Blaze Freeman Maple	4" C	7
GBA4.0	Ginkgo biloba 'Autumn Gold'	Autumn Gold Ginkgo	4" C	7
GTS4.0	Sheddenia viciifolia var. nemis 'Shademaster'	Shademaster Thornless Honeylocust	4" C	10
PMT4.0	Platanus x acerifolia 'Morton Circle'	Exclamation! London Planetree	4" C	7
QAR2.5	Quercus alba x robur 'Crimschmidt'	Crimson Spire Oak	2 1/2" C	5
Intermediate Trees				
AGP.06	Amelanchier x grandiflora 'Princess Diana'	Princess Diana Serviceberry	6" HT	4
MRR.06	Malus 'Royal Raindrops'	Royal Raindrops Crabapple	6" HT	3
Evergreen Trees				
POM.06	Picea omorika *	Serbian Spruce	6" HT	3
PAY.06	Pinus ayacahuite 'Forest Sky'	Forest Sky Mexican White Pine	6" HT	6
TOW.06	Thuja occidentalis 'Hetz Wintergreen'	Wintergreen Eastern Arborvitae	6" HT	7
Deciduous Shrubs				
AAB36	Aronia arbutifolia 'Brilliantissima'	Brilliant Red Chokeberry	36" HT	7
ARM24	Aronia melanocarpa 'Autumn Magic'	Autumn Magic Black Chokeberry	24" HT	6
AMM36	Aronia melanocarpa 'Morton'	Irquois Beauty™ Black Chokeberry	36" HT	71
DLO36	Diervilla lonicera *	Dwarf Bush-honeysuckle	36" HT	48
DLO24	Diervilla lonicera *	Dwarf Bush-honeysuckle	24" HT	21
RHK24	Rhus aromatica 'Gro-Low'	Gro-Low Fragrant Sumac	24" HT	47
RAL24	Ribes alpinum *	Alpine Currant	24" HT	12
RAL36	Ribes alpinum *	Alpine Currant	36" HT	70
SBT24	Spiraea betulifolia 'Tor'	Tor Birchleaf Spirea	24" HT	11
SBT36	Spiraea betulifolia 'Tor'	Tor Birchleaf Spirea	36" HT	75
SDM24	Spiraea x media 'Darsnorn'	Snow Storm Spirea	24" HT	42
SYK36	Syringa patula 'Miss Kim'	Miss Kim Manchurian Lilac	36" HT	6
Perennials				
AB6	Amsonia 'Blue Ice'	Blue Ice Buesters	1 GAL	21
HRD6	Hemerocallis 'Rosy Returns'	Rosy Returns Daylily	1 GAL	44
NFW6	Nepeta x faassenii 'Walker's Low'	Walker's Low Catmint	1 GAL	17
SE6	Sesleria autumnalis *	Autumn Moor Grass	1 GAL	44
SHT6	Sporobolus heterolepis 'Tara'	Tara Prairie Dropseed	1 GAL	41



newman architecture
1730 Park Street, Suite 115, Naperville, Illinois 60563-2611
(630) 420-1600 FAX (630) 420-1987 www.newmanarchitecture.com

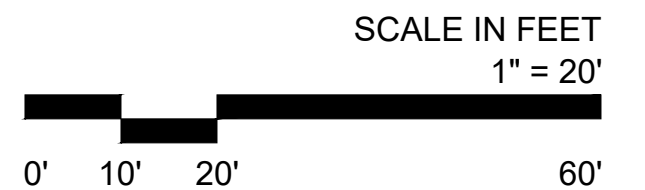


PROJECT NAME:
VILLAGE SUBMITTAL
**CHURCH ADDITION
AND RENOVATION**
820 N. ARLINGTON HEIGHTS ROAD
ARLINGTON HEIGHTS, ILLINOIS 60004

FOR
ST. JAMES PARISH
AND
THE ARCHDIOCESE OF CHICAGO

DRAWING TITLE:
PLANTING PLAN

RESUBMITTED 12/20/17



PROJECT NO.: 2017028 DATE: 12/20/17

L2



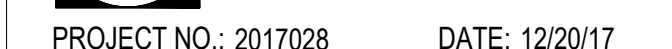
FOR
ST. JAMES PARISH
AND
THE ARCHDIOCESE OF CHICAGO

DRAWING TITLE:

PLANTING DETAILS

RESUBMITTED 12/20/17

SCALE IN FEET
as noted



L3



Scale: 1/2" = 1'-0"

d-plant-tree-de



Scale: 1/2" = 1'-0"

d-plant-shrub



Scale: 3" = 1'-0"

d-plant-mulch-trench



Scale: 1/2" = 1'-0"

d-plant-tree-on



Scale: NTS

d-bike-rack



Scale: 1/2" = 1'-0"

d-board on board fence